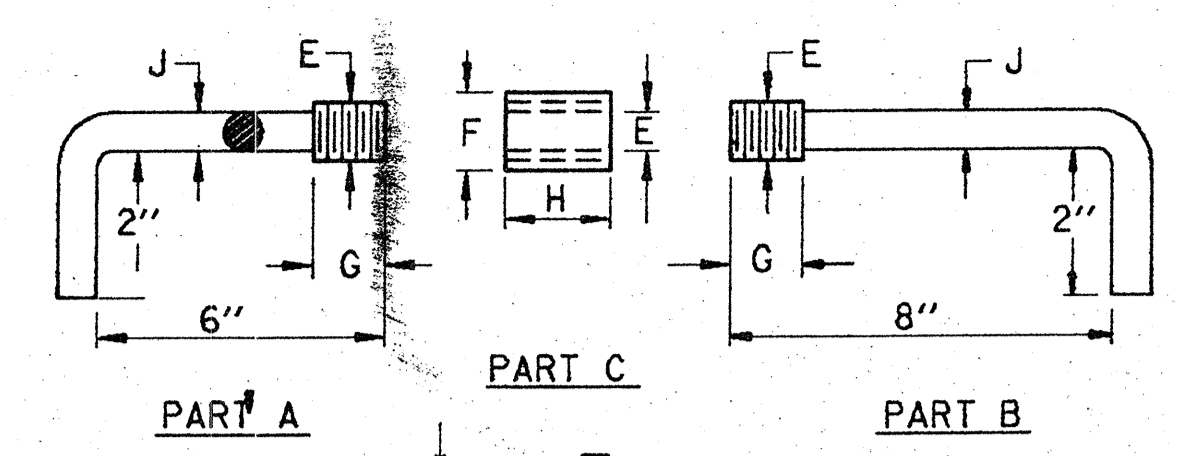


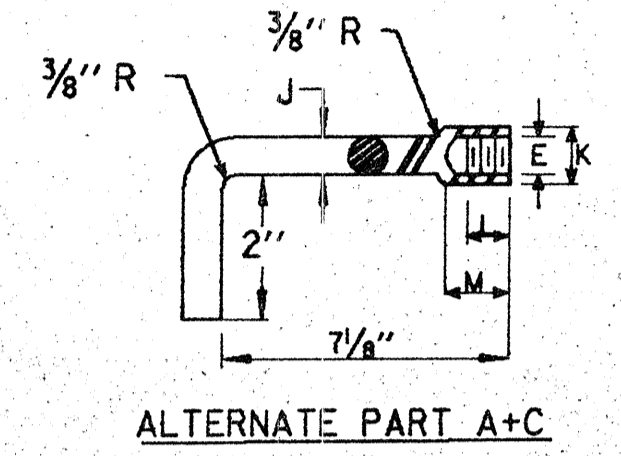
CYLINDER OR HEXAGON BAR NUT



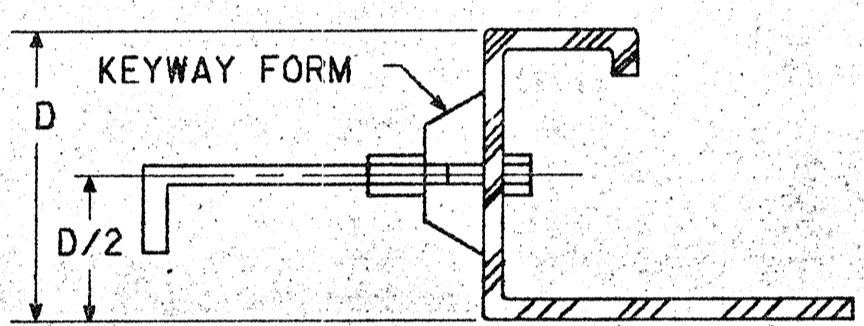
MATERIAL: STEEL CONFORMING TO AASHTO M 31 (GRADE # 40)

DEPTH OF PAVEMENT	E	F	G	H	I	J	K	L	M
8" & 9" SLAB	5/8"	7/8"	7/8"	1 1/8"	7/16"	9/16"	1"	1 1/8"	1 3/8"
10" SLAB	3/4"	1 1/4"	1"	2 1/8"	1/2"	1 1/16"	1 1/8"	1 1/8"	1 3/8"

DETAIL OF PARTS

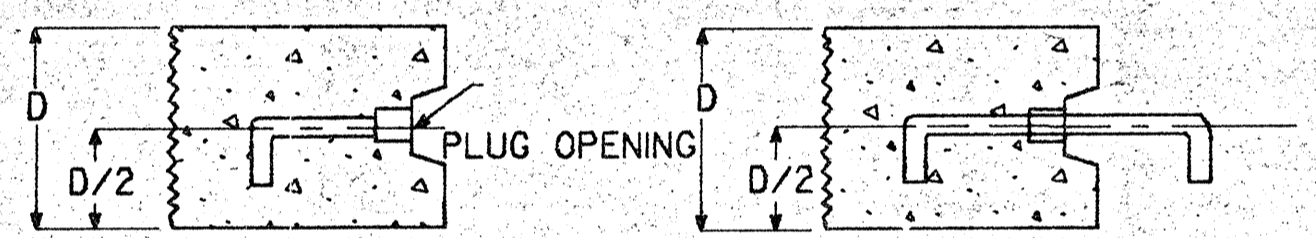


ALTERNATE PART A+C



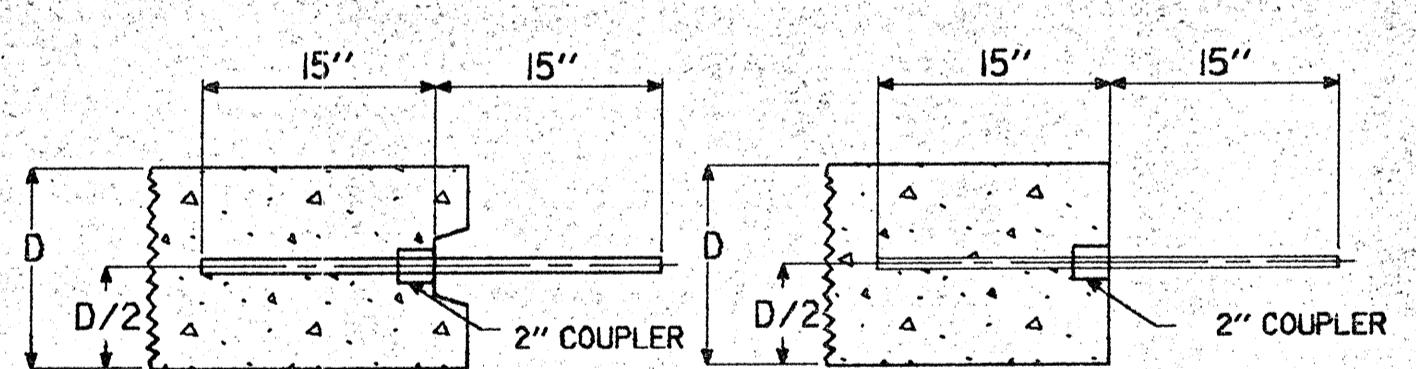
SECTION THRU ROAD FORM SHOWING KEYWAY IN PLACE

D=DEPTH OF PAVEMENT



SECTION THRU ROAD SLAB SHOWING HOOK BOLT PARTS INSTALLED

HOOK BOLT ASSEMBLY

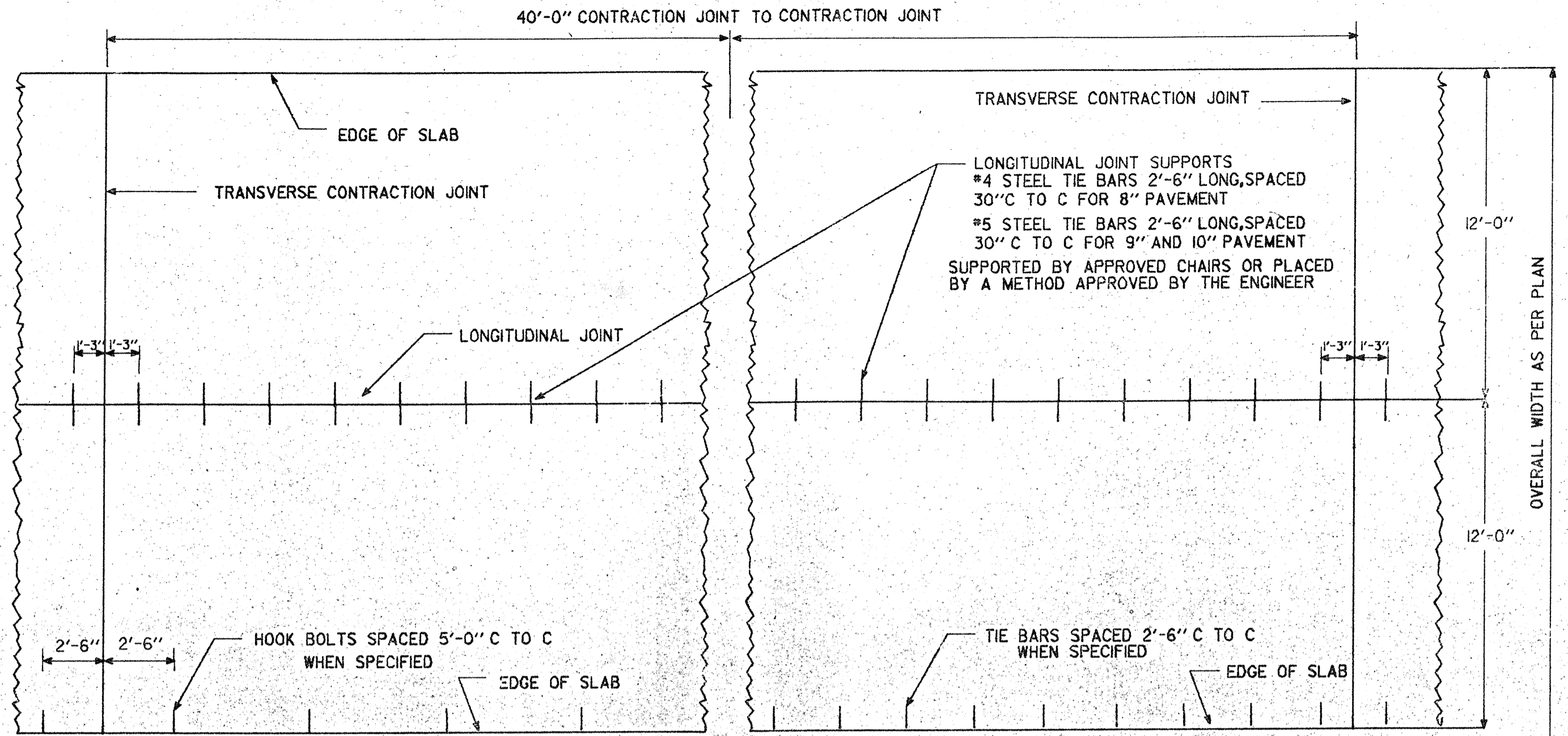


KEYWAY CONSTRUCTION

ALTERNATE (SLIP FORMING)

DEFORMED STEEL BAR #4 FOR 8" PAVEMENT  
DEFORMED STEEL BAR #5 FOR 9" AND 10" PAVEMENT  
MATERIAL: DEFORMED STEEL CONFORMING TO AASHTO M31 GRADE #40

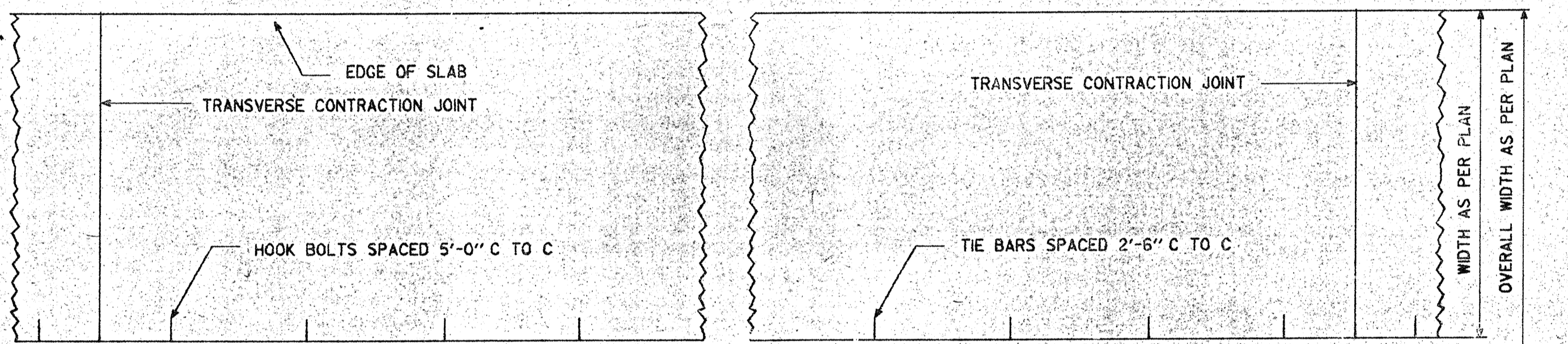
TIE BAR ASSEMBLY



HOOK BOLT ASSEMBLY

TIE BAR ASSEMBLY

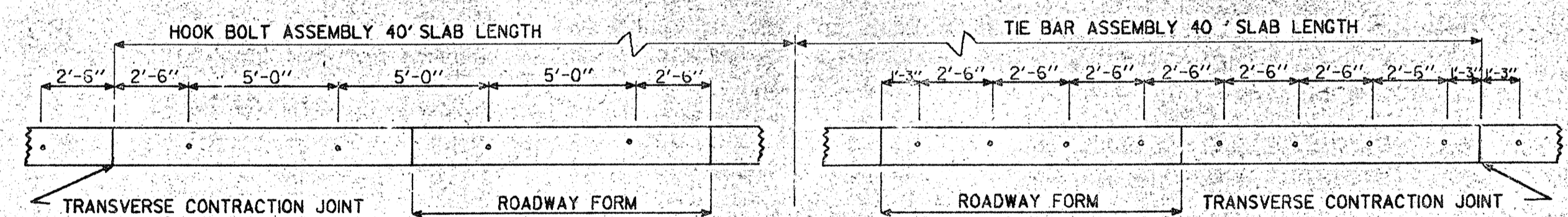
PLAN OF JOINTS FOR 24' WIDTH PAVEMENT



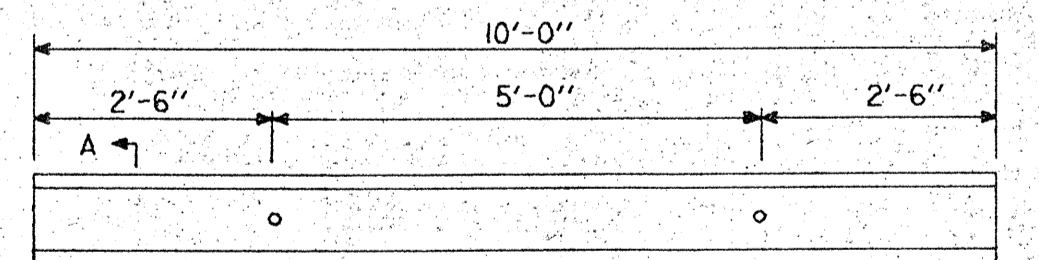
HOOK BOLT ASSEMBLY

TIE BAR ASSEMBLY

PLAN OF JOINTS FOR 11' AND 12' WIDTH PAVEMENTS

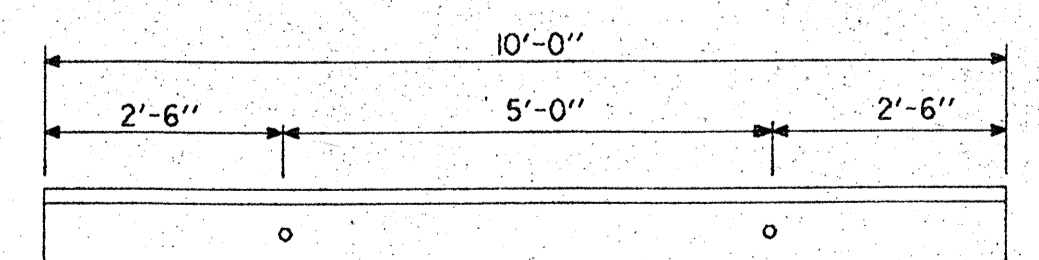


ARRANGEMENT OF KEYWAY FORMS FOR STANDARD SPACING



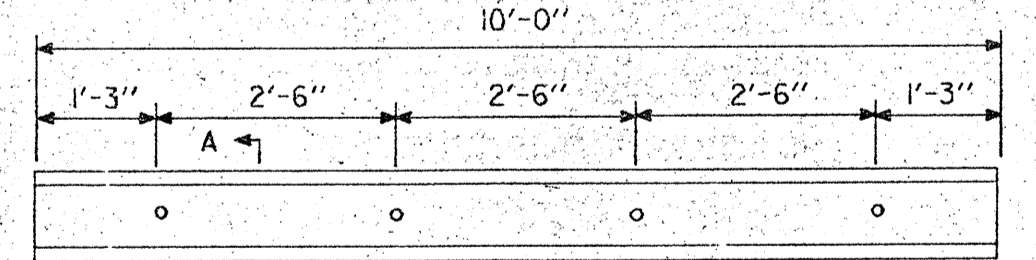
KEYWAY FORM

KEYWAY FORM SHALL BE RIGIDLY FASTENED TO THE ROAD FORM. THE ENDS SHALL BE PLUGGED, IF REQUIRED, TO THE SATISFACTION OF THE ENGINEER. IF STEEL, SHALL BE 16 GAUGE SHEET MINIMUM.



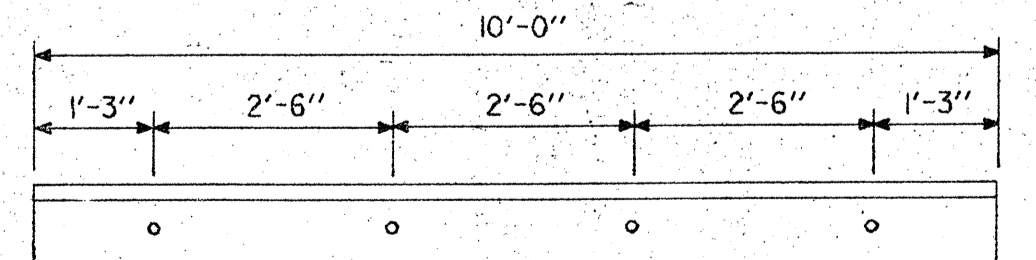
ROAD FORM

3/4" DIA. HOLES FOR 8" AND 9" PAVEMENT  
7/8" DIA. HOLES FOR 10" PAVEMENT



KEYWAY FORM

KEYWAY FORM SHALL BE RIGIDLY FASTENED TO THE ROAD FORM. THE ENDS SHALL BE PLUGGED, IF REQUIRED, TO THE SATISFACTION OF THE ENGINEER. IF STEEL, SHALL BE 16 GAUGE SHEET MINIMUM.

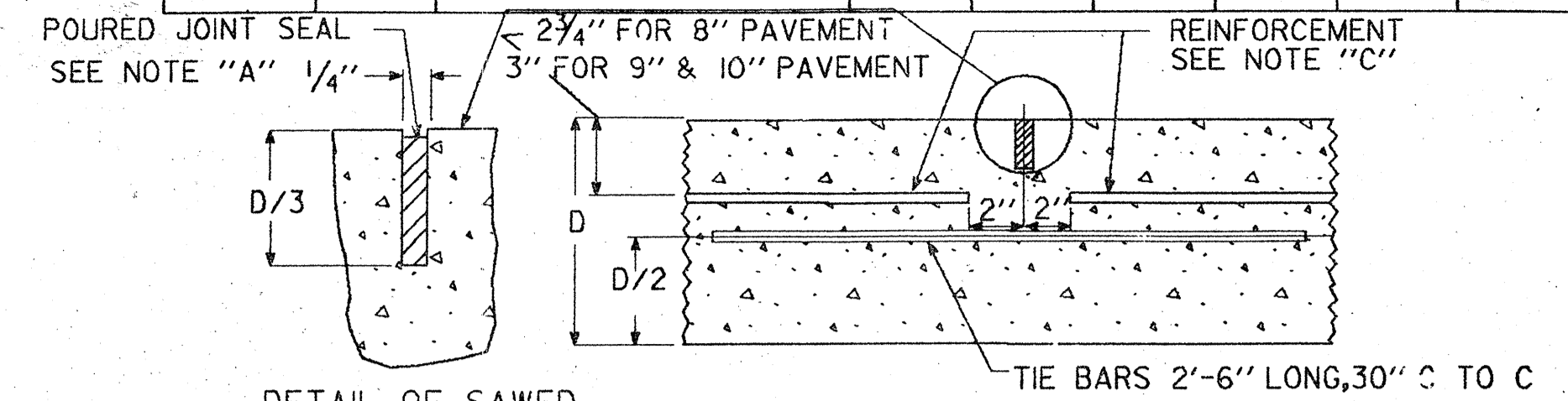


ROAD FORM

5/8" DIA. HOLES FOR 8" PAVEMENT  
3/4" DIA. HOLES FOR 9" AND 10" PAVEMENT

DRAWING FOR DRILLING HOLES IN FACE OF ROAD FORM FOR USE IN SETTING HOOK BOLTS AND TIE BARS

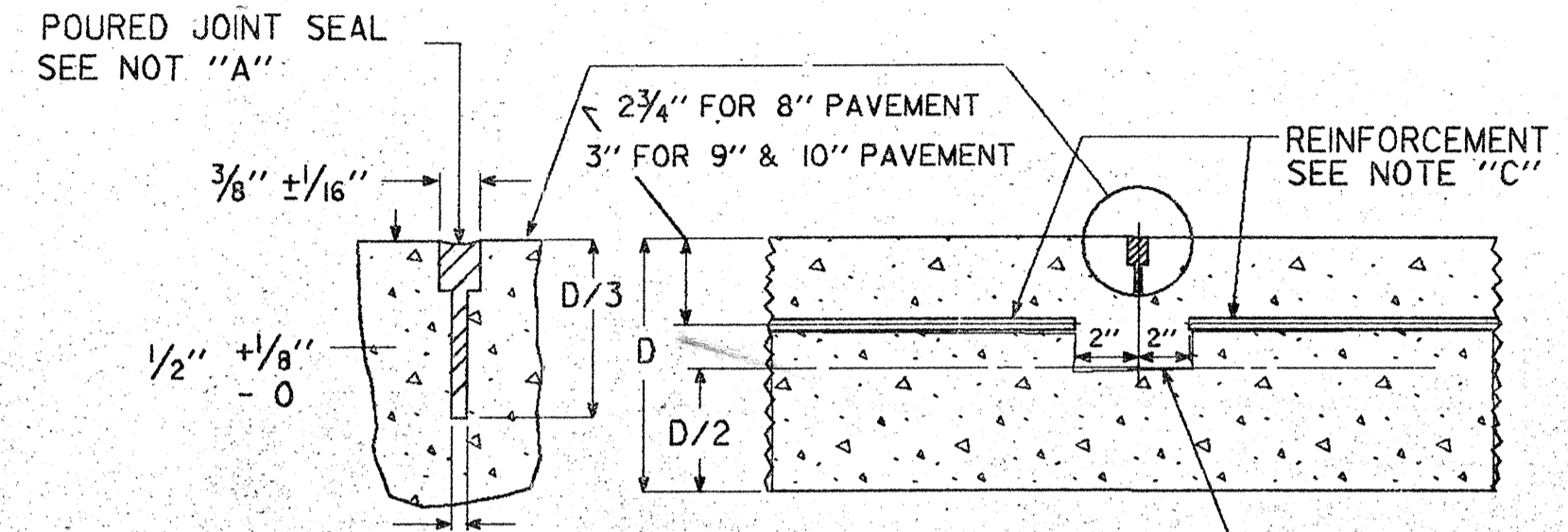
DETAILS OF KEYWAY FORMS



DETAIL OF SAWED LONGITUDINAL JOINT

NOTE: ALL LONGITUDINAL JOINTS SHALL BE SAWED AND SEALED INCLUDING LONGITUDINAL CONSTRUCTION JOINTS.

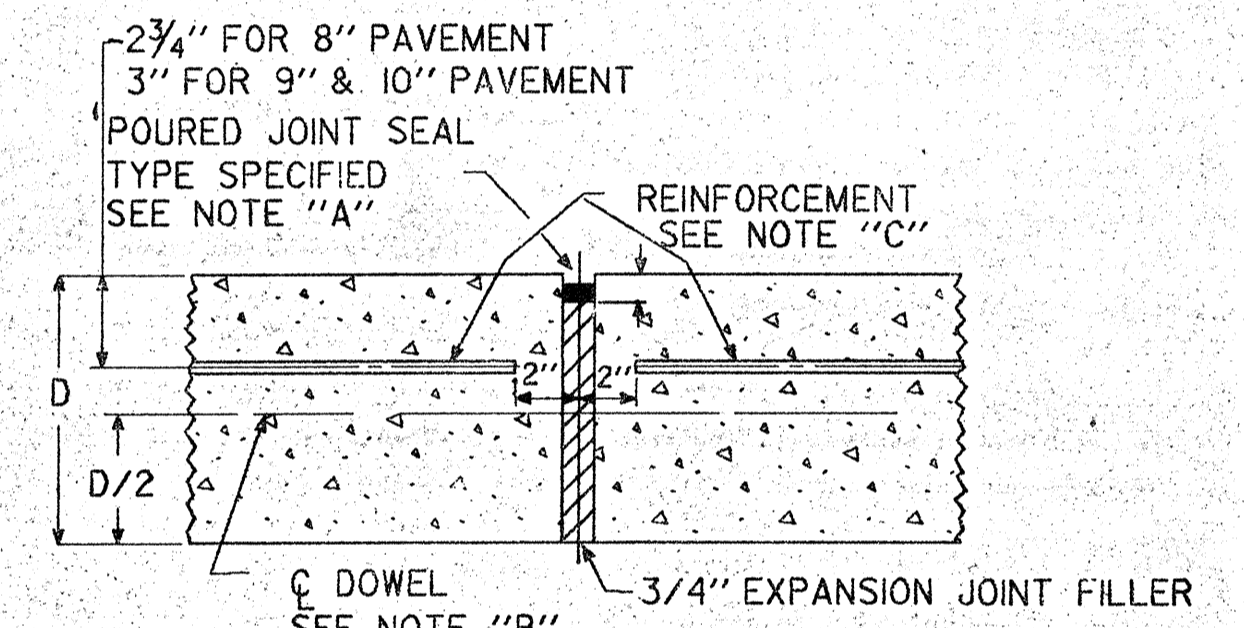
SECTION THRU LONGITUDINAL JOINT



DETAIL OF SAWED CONTRACTION JOINT

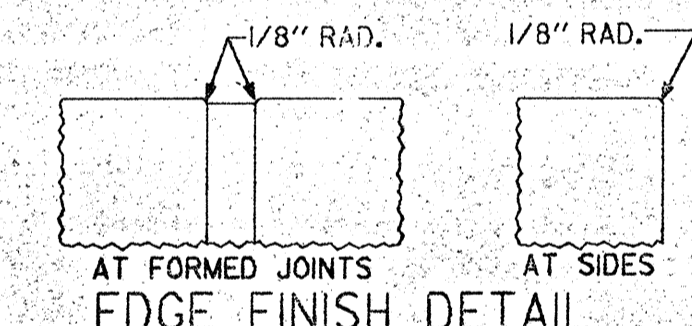
SECTION THRU TRANSVERSE CONTRACTION JOINT

D=DEPTH OF PAVEMENT



SECTION THRU TRANSVERSE EXPANSION JOINT

TRANSVERSE EXPANSION JOINT SHALL BE CONSTRUCTED AT LOCATIONS AS DIRECTED BY THE ENGINEER SEE NOTE "D"



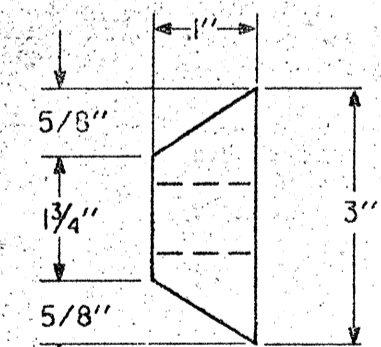
EDGE FINISH DETAIL

NOTE "A"--AT FIRST POURING, THE JOINT SEAL MATERIAL SHALL FILL THE JOINT FLUSH WITH THE PAVEMENT SURFACE. AFTER THIS MATERIAL HAS COOLED AND CONTRACTED, THE REMAINING JOINT OPENING SHALL BE FILLED TO WITHIN 1/8" OF THE PAVEMENT SURFACE.

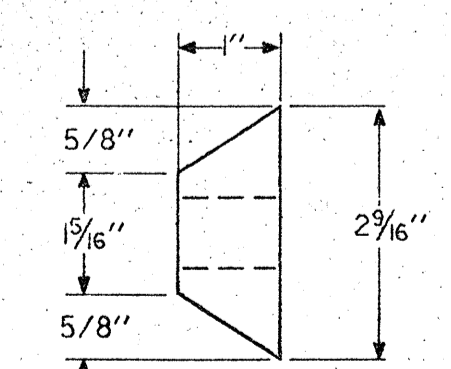
NOTE "B"--FOR DETAILS OF LOAD TRANSFER UNITS SEE STANDARD SHEETS 401-D & 401-E

NOTE "C"--FOR DETAILS OF FABRIC REINFORCEMENT SEE STANDARD SHEETS 401-B FOR DETAILS OF BAR MAT REINFORCEMENT SEE STANDARD SHEET 401-C

NOTE "D"--PLACEMENT OF TRANSVERSE EXPANSION JOINTS:  
(1) AT BEGINNING AND END OF PROJECT IF ABUTTING PAVEMENT IS REINFORCED CONCRETE.  
(2) AT ON AND OFF RAMP  
(3) ALONG THE PAVEMENT AT INTERVALS OF NOT LESS THAN 500 FEET NOR MORE THAN 1000 FEET.  
(4) AT OTHER LOCATIONS AS DIRECTED BY THE ENGINEER.

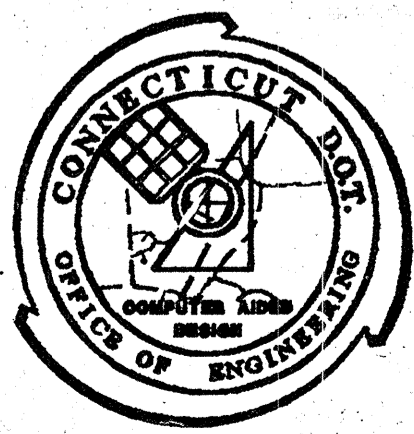


SECTION A-A FOR 10" PAVEMENT



SECTION A-A FOR 8" AND 9" PAVEMENT

<b>STANDARD SHEET</b> CONN. DEPT. OF TRANSPORTATION <b>PAVING DETAILS FOR REINFORCED CONCRETE PAVEMENT</b>			Designer by: _____ Date: _____ Drafted by: R. N. BAROUTJIAN Date: 12/20/88 Reviewed by: T. MEMAHON Date: 12/20/88 Approval Rec: _____ Date: 1-20-89 Approved: _____ Date: 9-21-89 F.H.W.A. Approver: _____ Date: 9/10/90
REVISIONS NO. DATE DESCRIPTION		Scaled: NOT TO SCALE STANDARD NUMBER <b>401-A</b>	



MANUAL REVISIONS TO THIS DOCUMENT ARE PROHIBITED. ALL REVISIONS MUST BE PERFORMED ON CADD FILES 05A24200, 2001401A.DGN

NOTE: ALL DIMENSIONS SUBJECT TO MANUFACTURING TOLERANCES EXCLUSIVE OF COATINGS.