

Public Information Meeting

**State Project No. 48-196
Rehabilitation of Bridge No. 03361
U.S. Route 5 over Route 190
Enfield, Connecticut**

Wednesday, March 19, 2014 at 7:00 pm
Council Chambers of the Enfield Town Hall
820 Enfield Street
Enfield, Connecticut

Connecticut Department of Transportation





Project Location Map





Introductions

- Connecticut Department of Transportation
 - David A. Cutler – Transportation Supervising Engineer
 - Andrew Cardinali – Project Engineer

- CME Associates, Inc.
 - Jacob Argiro – Director Project Management Services
 - Donald Wurst – Senior Project Manager
 - Susan Bakulski – Project Engineer



Department's Role

- Systematically inspect bridges for deficiencies and schedule the rehabilitation of structures
- Oversee the development of technical drawings and bid documents on projects
- Administration and inspection during construction



Project Needs and Goals

- Rehabilitation of bridge to extend service life
- Improve roadway ride-ability for traveling public
- Maintain/provide a safe crossing on U.S. Route 5 of Route 190 for vehicles, bicycles & pedestrians
- Minimize disturbance for the traveling public during construction



Project Overview

- Project is in preliminary design stage
 - We are looking for your input
- Rehabilitation of bridge to repair deteriorated elements
- Preventive maintenance to ensure extended service life



U.S. Route 5 Over Route 190

- Built in 1966
- Reinforced concrete deck supported on continuous welded steel plate girders
- Substructure consists of reinforced concrete abutments and a reinforced concrete multi columned pier





U.S. Route 5 Over Route 190

Existing Geometry

- U.S. Route 5 (Enfield Street) over Route 190 (Hazard Avenue)
- (2) spans, total bridge length of 239'
- Bridge width = 40'-0" (curb-to-curb)
- Carries (2) NB lanes, (2) SB lanes,
- No shoulders on each side of bridge
- 5'-7" sidewalks along each side of bridge

Existing Conditions

- Deck: "5" Fair
- Superstructure: "4" Poor
- Substructure: "6" Satisfactory
- Paint: "5" Fair
- Structure Evaluation: "4" Poor
- Average Daily Traffic: 11,400 vehicles on bridge

Bridge No. 03361





U.S. Route 5 Over Route 190





U.S. Route 5 Over Route 190





U.S. Route 5 Over Route 190





U.S. Route 5 Over Route 190





U.S. Route 5 Over Route 190





U.S. Route 5 Over Route 190





U.S. Route 5 Over Route 190

Proposed Rehabilitative Measures

- East sidewalk removal and parapet modifications
- Re-striping the bridge with three 11' lanes and 6' shoulders
- Approach roadway curb line shift to tie into bridge width
- Deck concrete patching/repairs
- Removal of wide concrete haunches over travelways
- Membrane and overlay replacement
- Deck joint replacement
- Protective fence replacement
- Structural steel repairs
- Painting of fascia girders and spot painting of structural steel and fixed bearings
- Expansion bearing replacement
- Substructure repairs



U.S. Route 5 Over Route 190

Proposed Rehabilitative Measures; Above Deck

- East sidewalk removal and parapet modifications
- Deck concrete patching
- Membrane and overlay replacement
- Deck joint replacement
- Protective fence replacement
- Re-striping the bridge with three 11' lanes and 6' shoulders
- Approach roadway curb line shift to tie into bridge width





U.S. Route 5 Over Route 190

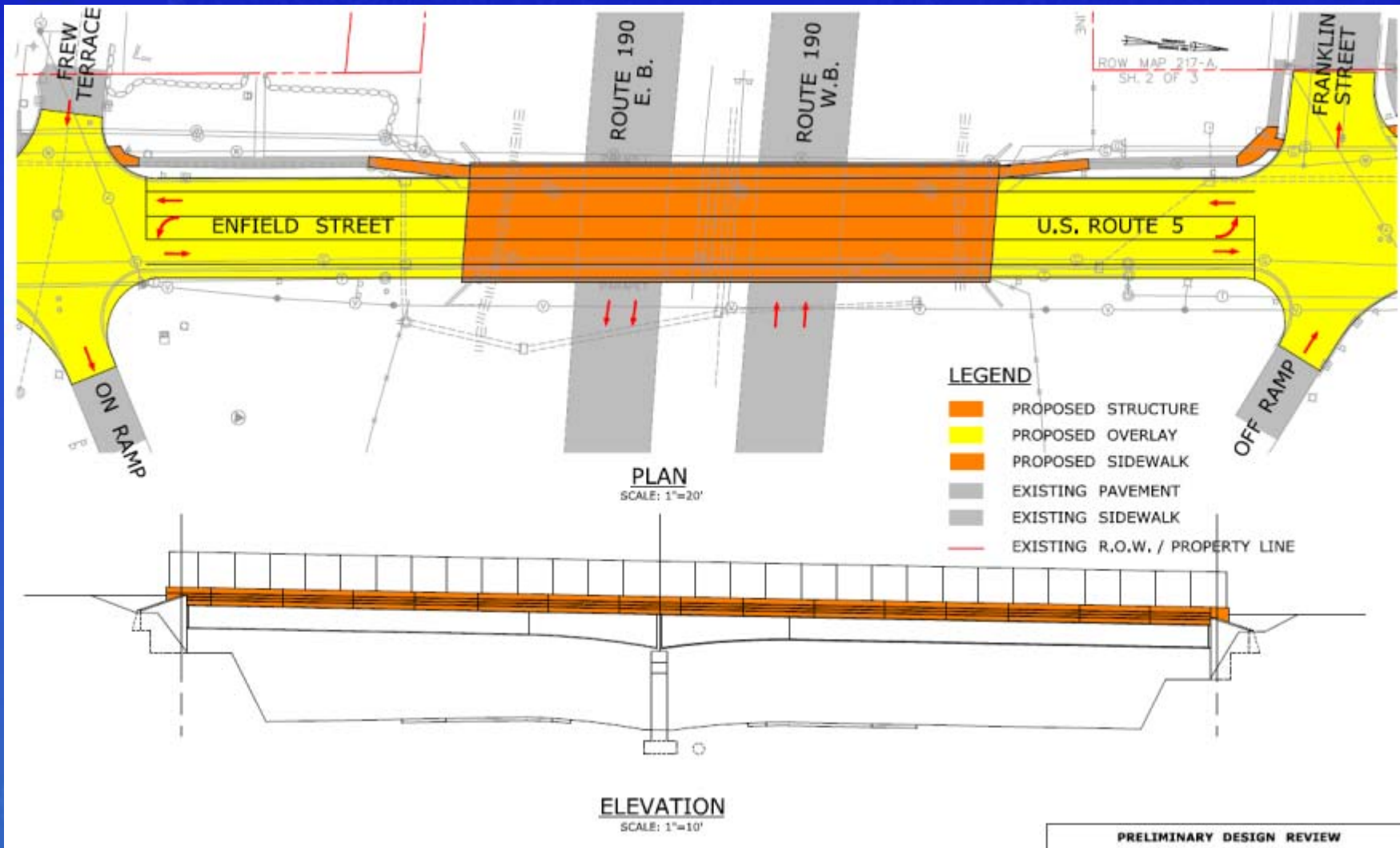
Proposed Rehabilitative Measures; Below Deck

- Deck concrete repairs
- Removal of wide concrete haunches over travelways
- Structural steel repairs
- Painting of fascia girders and spot painting of structural steel and fixed bearings
- Expansion bearing replacement
- Substructure repairs



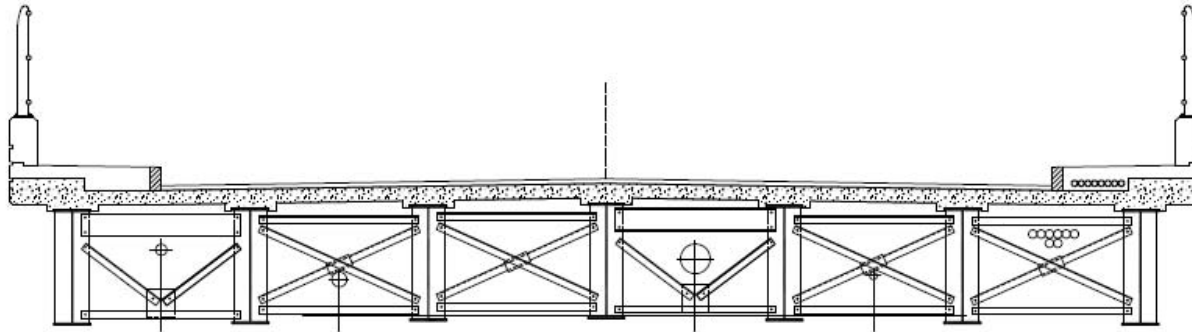


U.S. Route 5 Over Route 190





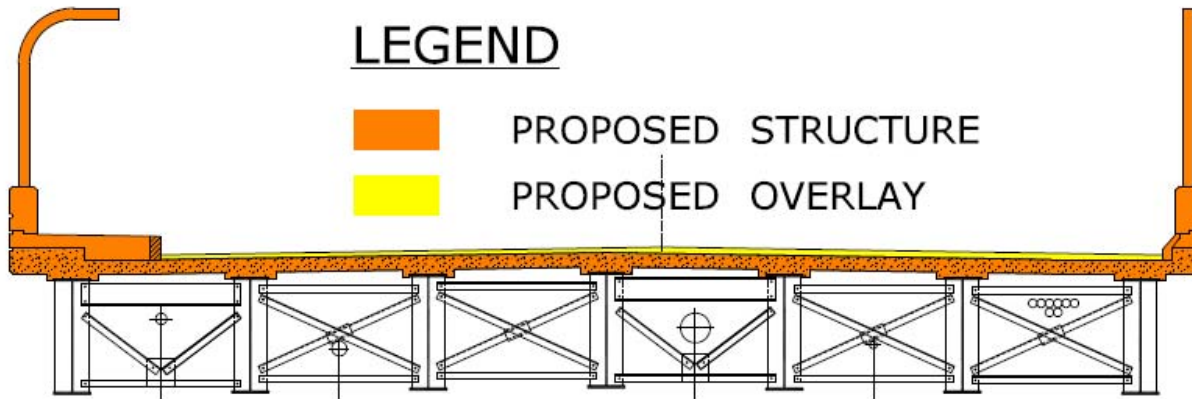
U.S. Route 5 Over Route 190



EXISTING CROSS SECTION
SCALE: 1"=5'

LEGEND

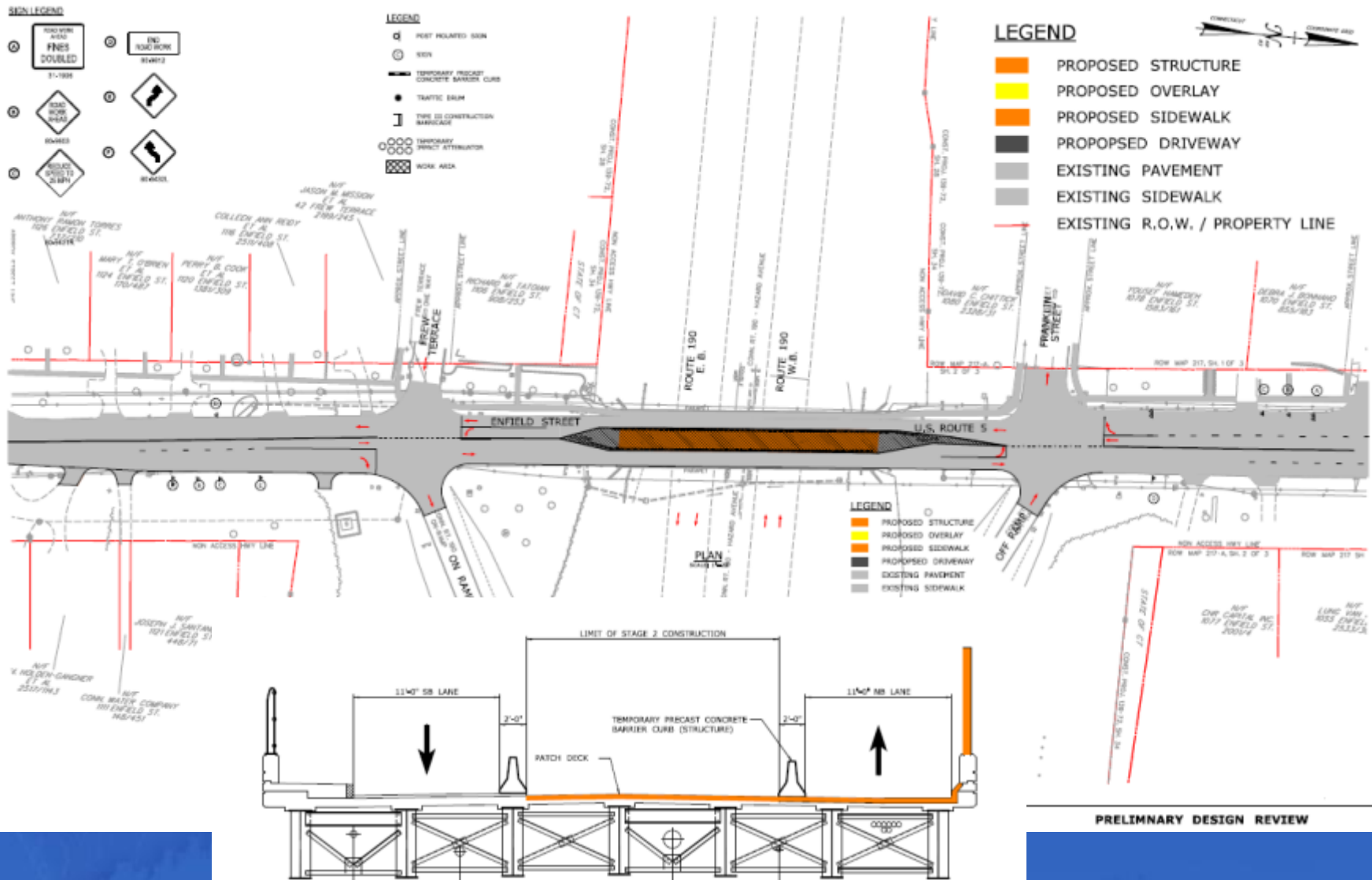
-  PROPOSED STRUCTURE
-  PROPOSED OVERLAY



PROPOSED CROSS SECTION
SCALE: 1"=5'

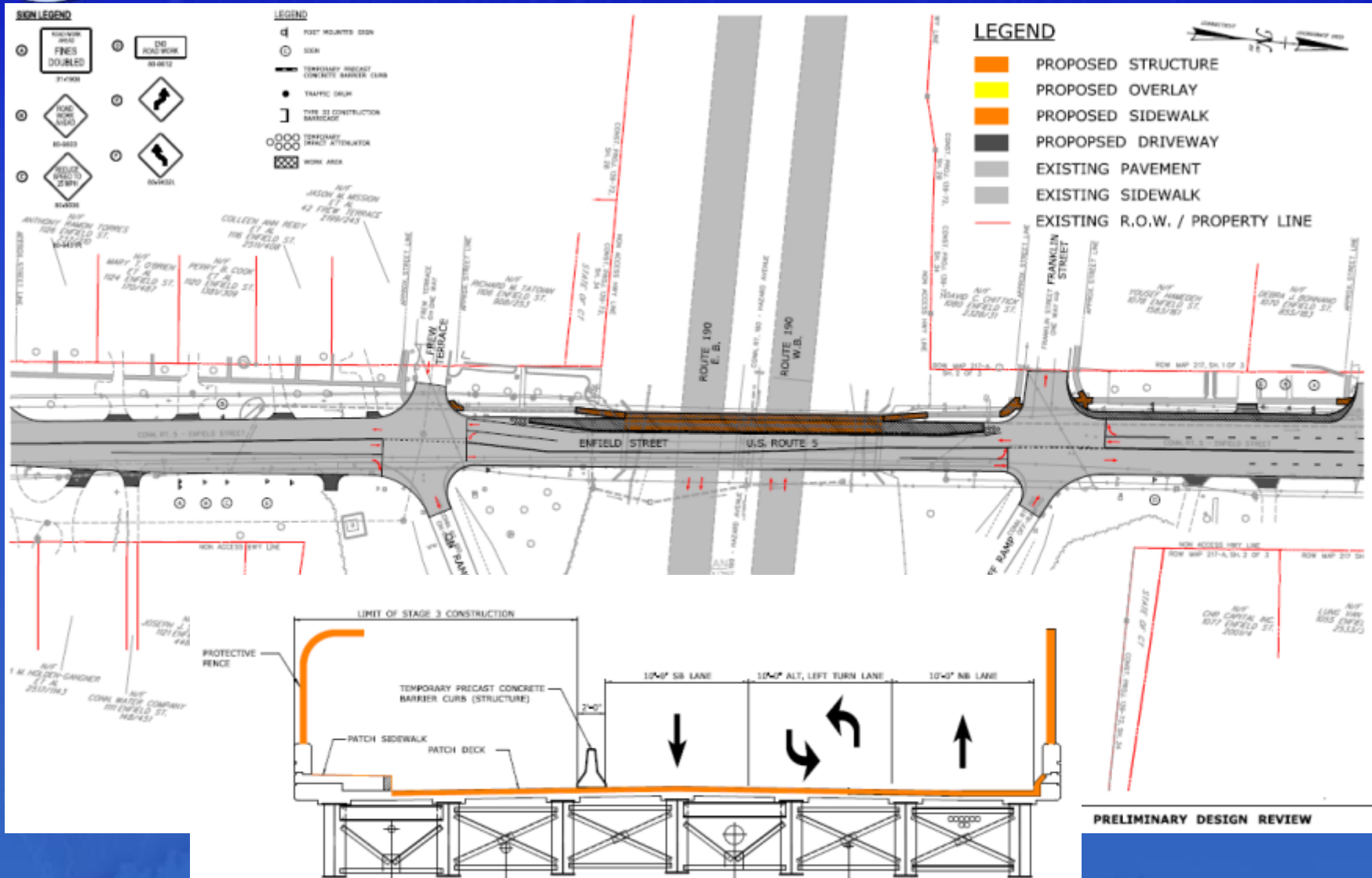


MPT U.S. Route 5: Stage 2



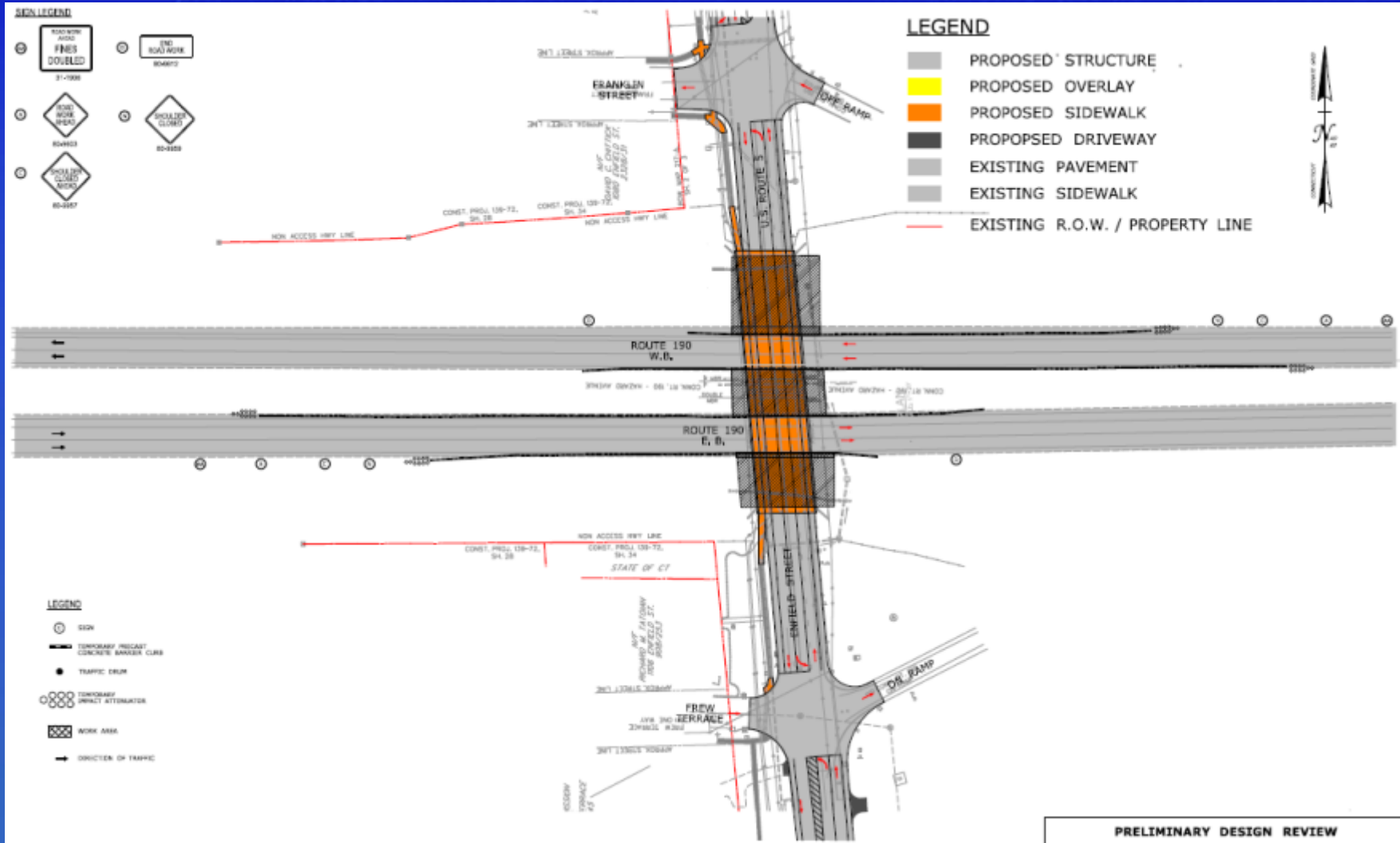


MPT U.S. Route 5: Stage 3





MPT Route 190





Right of Way & Environmental Impacts

Anticipated Impacts to Private Properties:

- Repair work and final curb line shift is to remain within the State's ROW
- Temporary impact of traffic flow alterations to accommodate staged construction
- Temporary impact of noise disturbance at adjacent properties

Anticipated Impacts to Environment:

- There are no regulated wetlands in the project vicinity
- No environmental impacts anticipated



Project Cost

- Construction cost for this project is currently estimated at approximately \$4,200,000
- The rehabilitation of this bridge will be undertaken using State Funds under the "Fix-It-First" program



Project Schedule

- Construction Start: Spring of 2015
- Completion: Winter of 2015
- The schedule is preliminary and is subject to change



Contact Information

Thank You Questions and Comments

Andrew Cardinali – Project Engineer
Connecticut DOT
2800 Berlin Turnpike
P.O. Box 317546
Newington, CT 06131

Email: andrew.cardinali@ct.gov
Phone: 860-594-3315