



Connecticut DOT
Bureau of Engineering and Construction

Number: ECB-2021-5
Date: December 22, 2021

ENGINEERING & CONSTRUCTION BULLETIN

Assistant Chief Engineer

Office of Construction Organizational Clarification

This bulletin provides clarification related to the structure of the Office of Construction (OOC).

The Division of Construction Operations (DCO), formerly referred to as the OOC, should be referenced when addressing the Transportation Division Chief (Christopher G. Angelotti) and any units within the DCO, as shown in Chart 2 on the following page.

The Material Evaluation and Specification Unit (MESU), formerly the Division of Materials Testing (DMT), should be referenced when addressing the former DMT.

The CTDOT webpages, SharePoint webpages, manuals, and other effected references will be updated in the future to reflect these clarifications.

Graphic representations of the organization of the OOC and DCO are provided on the next page for clarity.

Chart 1: Bureau of Engineering and Construction – Office of Construction

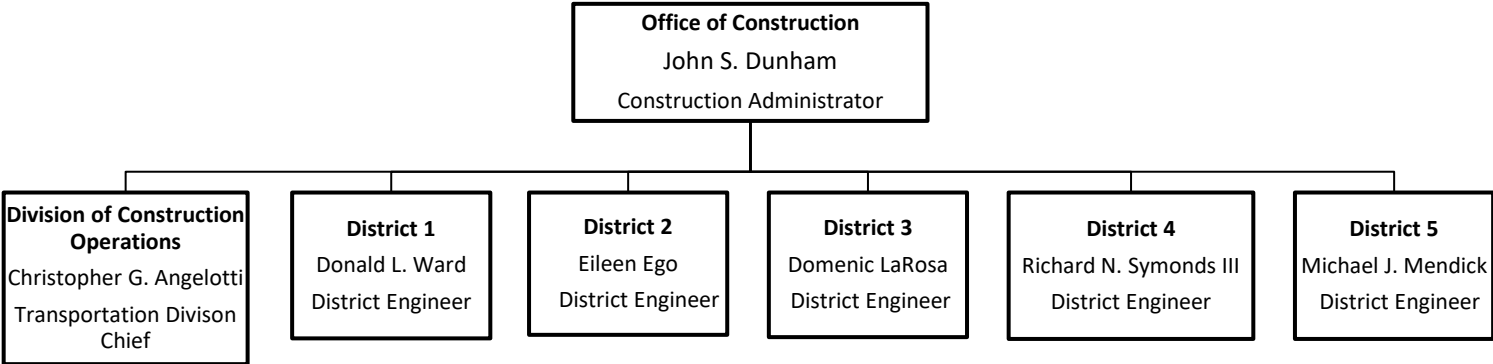


Chart 2: Division of Construction Operations

