

CTDOT Estimator Catalog Download and Updates Instructions for Consultants

New Installations

Download the initial English catalogs provided by CTDOT at:

[Creating New Estimator Catalogs](#)

Unzip the above files and save them locally.

New catalogs must be created on the estimator's workstation or a shared drive or server in the Catalog Path specified on the Estimator **Global Options URLs** tab. The default location is: **C:\ProgramData\Estimator\catalogs**, but it may vary depending on your Estimator installation. This process only needs to be done once, when first installing Estimator.

You will need to be an Estimator Administrator ("Super User") to do the following.

Note: The English 5 Year Catalog is available for reference only to investigate prices on English items that do not have a sufficient 3 year bid history. Also available, for reference, is the English 1 Year catalog. This catalog is only to investigate prices related to the recent rise in inflation and global commodity supply chain issues. **Do not use these catalogs to obtain prices for the entire estimate!**

- On your hard drive, if you have previous versions of Estimator catalogs move or delete the old catalogs ENG3YR, ENG5YR_REF_ONLY and ENG1YR_REF_ONLY.
- Open Estimator, (you may get an error message saying that "Cannot Open Catalog"; click OK).
- Go to **Catalog Tools> New Catalog**
- Enter **ENG3YR** for the name.
- Enter Spec Year: **11**
- Enter Description: **English 3 year bid history catalog**
- Go to **File >Import** and browse to **ENG3YR.xml>Open>OK**.
- Select **Save**.
- Repeat the above steps for:
 - ENG5YR_REF_ONLY catalog
 - Enter Spec Year: **11**
 - Enter Description: **English 5 year bid history catalog – for reference only!**
 - ENG1YR_REF_ONLY catalog
 - Enter Spec Year: **11**
 - Enter Description: **English 1 year bid history catalog – for reference only!**

It is important that the catalogs be named correctly and be given the correct spec year and description or they will not function properly.

CTDOT Estimator Catalog Download and Updates Instructions for Consultants

Monthly Updates

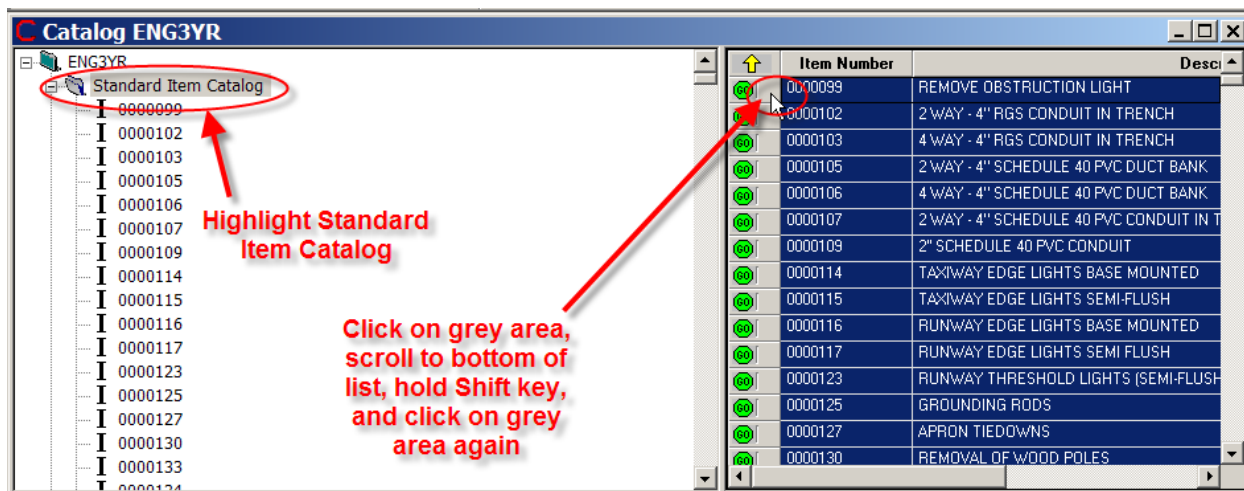
When there are monthly update files with a .zip extension available for download, these must then be imported and extracted in order to have current data in the catalogs.

Updates to the catalogs in the form of zipped .xml files will be provided on the [Estimator Page](#) website on or about the first Wednesday of every month (to sign up for e-alerts on when the catalogs are posted see instructions below). The updates will include any new or changed items added during the month, and updated bid histories. Items marked obsolete will not be in the updated catalog. Download and unzip all three catalogs to the local drive.

Before importing the update, the items must be deleted in the catalogs to ensure that items that have been marked obsolete in the current update are not carried over from the previous catalog.

Go to **Catalog Tools>Open Catalog** and select **ENG3YR**. Highlight **Standard Item Catalog**, highlight all the items, go to **EDIT>Delete Items**.

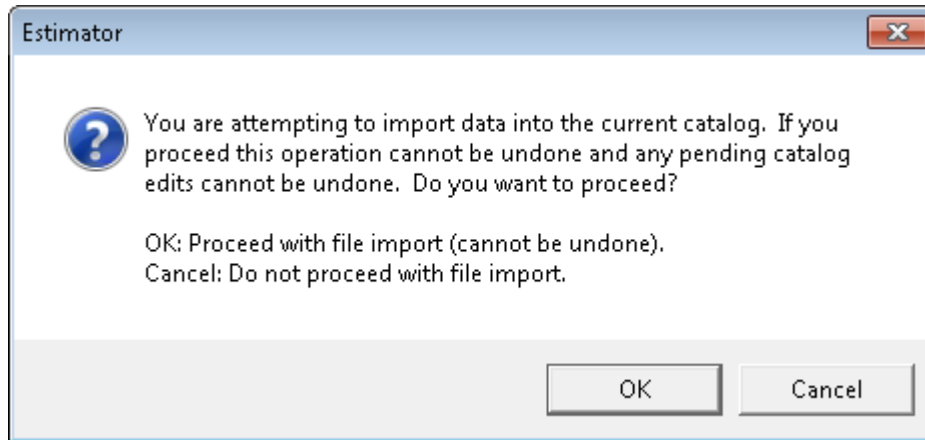
Note: To select all the items at once, click in the gray area as shown, hold the shift key, scroll to bottom and click on the grey area again:



After items are deleted select **File>Save**. While the **Standard Item Catalog** is still highlighted, import the corresponding .xml update file by selecting **Import...** from the Estimator **File** menu. You will be presented with an **Import** box to locate the ENG3YR_upd.xml file to be imported. These steps must be completed for all three catalogs.

CTDOT Estimator Catalog Download and Updates Instructions for Consultants

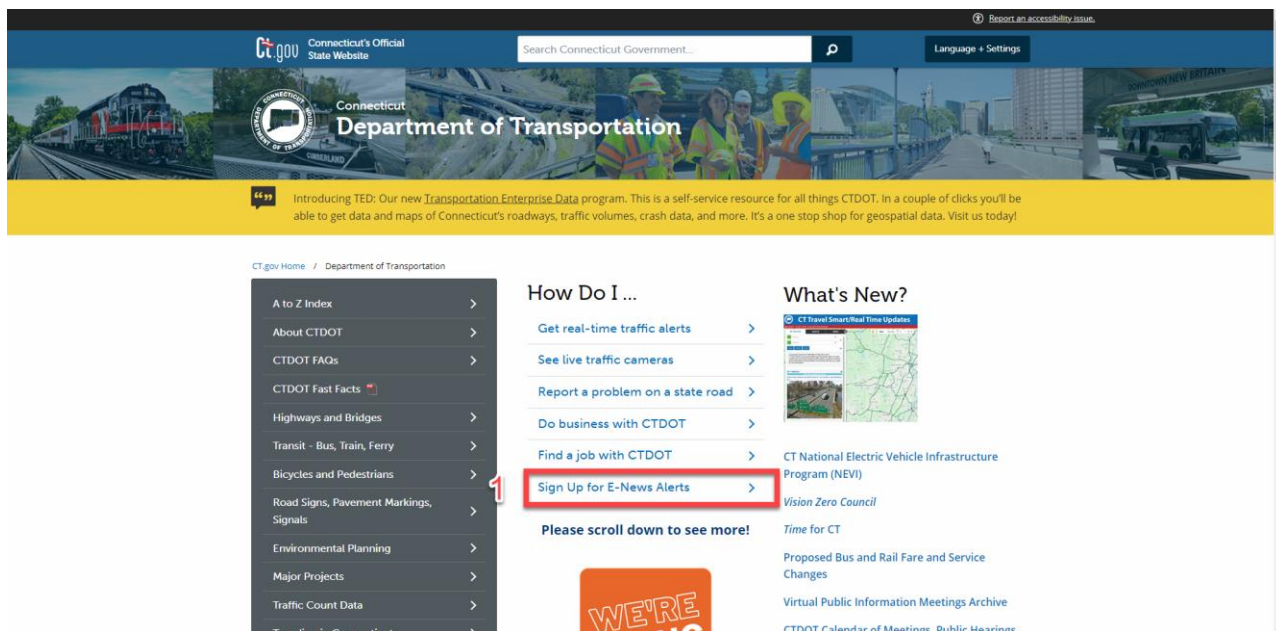
After selecting the file to be imported you will see a warning box advising you about inability to undo the import you are about to do. Read and follow the instructions on this warning box before proceeding.



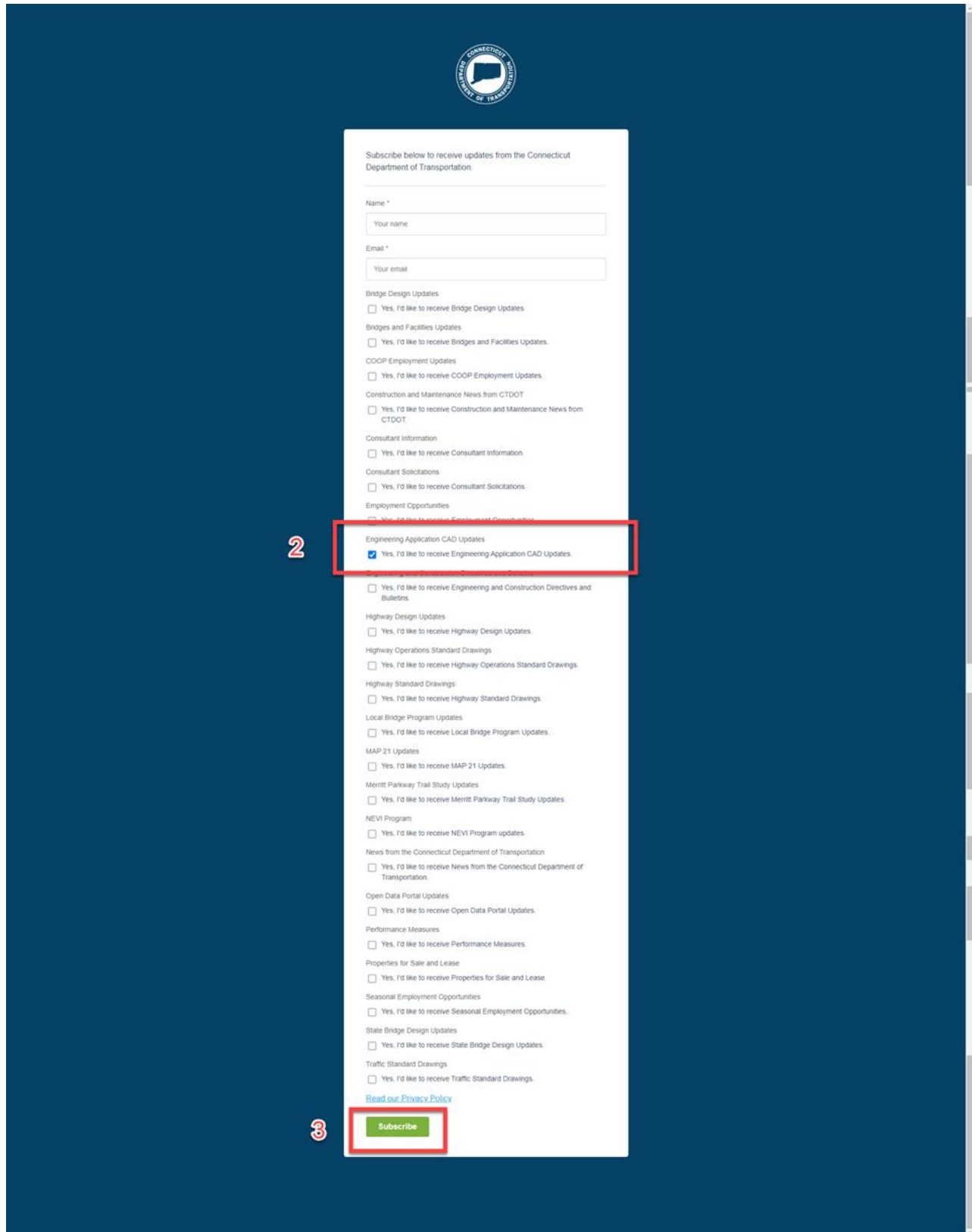
Sign up for E-Alerts

When you sign up for E-alerts an e-mail will be sent to you when the monthly catalog updates are completed.

To receive notifications when catalog updates are available, go to the [CTDOT website](#) and select (1) "Sign-up for E-News Alerts". Enter your name/email address and select (2) Engineering Application CAD Updates. Finally, click (3) subscribe.



CTDOT Estimator Catalog Download and Updates Instructions for Consultants



The image shows a subscription form for the Connecticut Department of Transportation (CTDOT). At the top center is the CTDOT logo. Below it, the text reads: "Subscribe below to receive updates from the Connecticut Department of Transportation." The form includes input fields for "Name" and "Email", both with placeholder text "Your name" and "Your email" respectively. A list of subscription categories follows, each with a checkbox and the text "Yes, I'd like to receive [Category] Updates". A red box labeled "2" highlights the "Engineering Application CAD Updates" category, which has its checkbox checked. Other categories include Bridge Design Updates, Bridges and Facilities Updates, COOP Employment Updates, Construction and Maintenance News from CTDOT, Consultant Information, Consultant Solicitations, Employment Opportunities, Engineering and Construction Directives and Bulletins, Highway Design Updates, Highway Operations Standard Drawings, Highway Standard Drawings, Local Bridge Program Updates, MAP 21 Updates, Merritt Parkway Trail Study Updates, NEVI Program, News from the Connecticut Department of Transportation, Open Data Portal Updates, Performance Measures, Properties for Sale and Lease, Seasonal Employment Opportunities, State Bridge Design Updates, and Traffic Standard Drawings. At the bottom, there is a link "Read our Privacy Policy" and a green "Subscribe" button highlighted with a red box labeled "3".

CONNECTICUT
DEPARTMENT OF TRANSPORTATION

Subscribe below to receive updates from the Connecticut Department of Transportation.

Name *

Your name

Email *

Your email

Bridge Design Updates

Yes, I'd like to receive Bridge Design Updates.

Bridges and Facilities Updates

Yes, I'd like to receive Bridges and Facilities Updates.

COOP Employment Updates

Yes, I'd like to receive COOP Employment Updates.

Construction and Maintenance News from CTDOT

Yes, I'd like to receive Construction and Maintenance News from CTDOT.

Consultant Information

Yes, I'd like to receive Consultant Information.

Consultant Solicitations

Yes, I'd like to receive Consultant Solicitations.

Employment Opportunities

Yes, I'd like to receive Employment Opportunities.

2

Engineering Application CAD Updates

Yes, I'd like to receive Engineering Application CAD Updates.

Engineering and Construction Directives and Bulletins

Yes, I'd like to receive Engineering and Construction Directives and Bulletins.

Highway Design Updates

Yes, I'd like to receive Highway Design Updates.

Highway Operations Standard Drawings

Yes, I'd like to receive Highway Operations Standard Drawings.

Highway Standard Drawings

Yes, I'd like to receive Highway Standard Drawings.

Local Bridge Program Updates

Yes, I'd like to receive Local Bridge Program Updates.

MAP 21 Updates

Yes, I'd like to receive MAP 21 Updates.

Merritt Parkway Trail Study Updates

Yes, I'd like to receive Merritt Parkway Trail Study Updates.

NEVI Program

Yes, I'd like to receive NEVI Program updates.

News from the Connecticut Department of Transportation

Yes, I'd like to receive News from the Connecticut Department of Transportation.

Open Data Portal Updates

Yes, I'd like to receive Open Data Portal Updates.

Performance Measures

Yes, I'd like to receive Performance Measures.

Properties for Sale and Lease

Yes, I'd like to receive Properties for Sale and Lease.

Seasonal Employment Opportunities

Yes, I'd like to receive Seasonal Employment Opportunities.

State Bridge Design Updates

Yes, I'd like to receive State Bridge Design Updates.

Traffic Standard Drawings

Yes, I'd like to receive Traffic Standard Drawings.

[Read our Privacy Policy](#)

3

Subscribe