

Waterbodies Associated with Federal and State Recognized Tribes in Connecticut

Background

Connecticut is a small state and water resources within state and tribal areas may be interconnected. There are two (2) federally recognized Tribal Nations, the Mashantucket (Western) Pequot and Mohegan, and three (3) state-recognized Tribal Nations, the Schaghticoke, Golden Hill Paugussett, and Paucatuck Eastern Pequot Tribal Nations, in Connecticut. As sovereign nations, federally recognized tribes manage the water resources within their tribal boundaries.

The Connecticut Water Quality Standards and other programs under the Clean Water Act apply to waters within the State of Connecticut. This includes water resources within the Tribal Reservations for the three state-recognized tribal nations. Water resources within the two federally recognized Tribal Nations, are managed by the Tribes. As with other water resources where state waters may intersect with resources of another jurisdiction, it is important to understand the connections between these resources.

This document is intended to help identify the water resources within state-recognized Tribal Reservations as well as the relationship between waters state water resources and those within federally recognized Tribal Nations. By understanding which waters within Connecticut intersect with waters in tribal areas, environmental management programs, members of Tribal Nations, and the public will be better able to understand the intersection between activities authorized within Connecticut watersheds and water quality within water resources in federal and state Tribal Nations.

This document provides details on water resources managed by the State of Connecticut and water resources within tribal areas. A map and narrative description of the general location of each Tribal Nation, a description of surface water hydrology and flow, identification of facilities with water related permits, and locations of dams are provided.

Federally Recognized Tribal Reservations

Mohegan Tribe

Map (Figure 1)

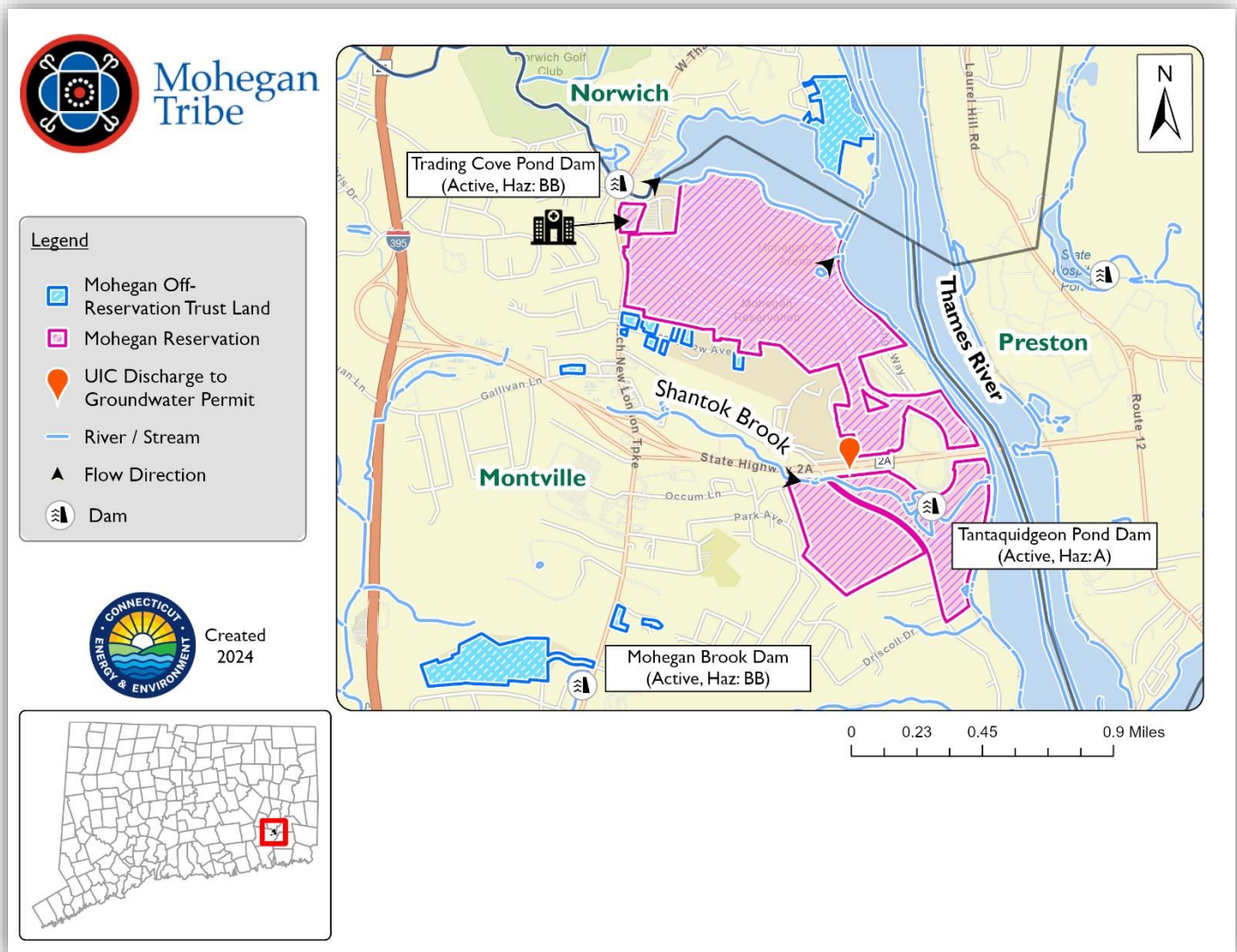


Figure 1 - Mohegan Reservation, General Location and Hydrology

About, General Location, And Hydrology

The Mohegan Tribe is a federally recognized sovereign tribe. The reservation is approximately 500 acres in size and is located in the southeastern section of Connecticut along the Thames River (Figure 1). The majority of the Reservation is surrounded by the towns of Montville and Norwich (Off-Reservation Trust land, northernmost section in blue in Figure 1).

The Mohegan Tribal land consists of Reservation land and Off-Reservation trust land.


IWQR and Water Quality Action Plan Information

There are no Connecticut water with an assigned an Waterbody ID that flow into the reservation. However, Shantok Brook, which has not been assessed or assigned a Waterbody ID , is located near the southern section of the Mohegan Reservation. It starts as a Connecticut water near Gallivan Lane in Montville, CT, and flows easterly/southeasterly entering the Mohegan Reservation, flowing through the Reservation and then enters the Thames River when it leaves tribal lands. Shantok Brook is not included in Connecticut’s 2024 IWQR. It is located within subregional basin 3000.

Potential Sources Of Pollutants

There is one potential pollution source that is regulated by CT DEEP located within the watershed upstream of the tribal area. This facility is an ash residue landfill and discharges to the groundwater under a UIC permit. (See Figure 1 for location of the facility)

Table 1: Potential Sources of Pollutants (Permits) for Mohegan Tribal Waters

| Permit ID | Facility Name | Feature Type |
|--|---|---------------------------------|
|  LF0000042 | SOUTHEASTERN CONNECTICUT REGIONAL RESOURCE RECOVERY AUTHORITY | UIC Discharge to Groundwater |

Dams

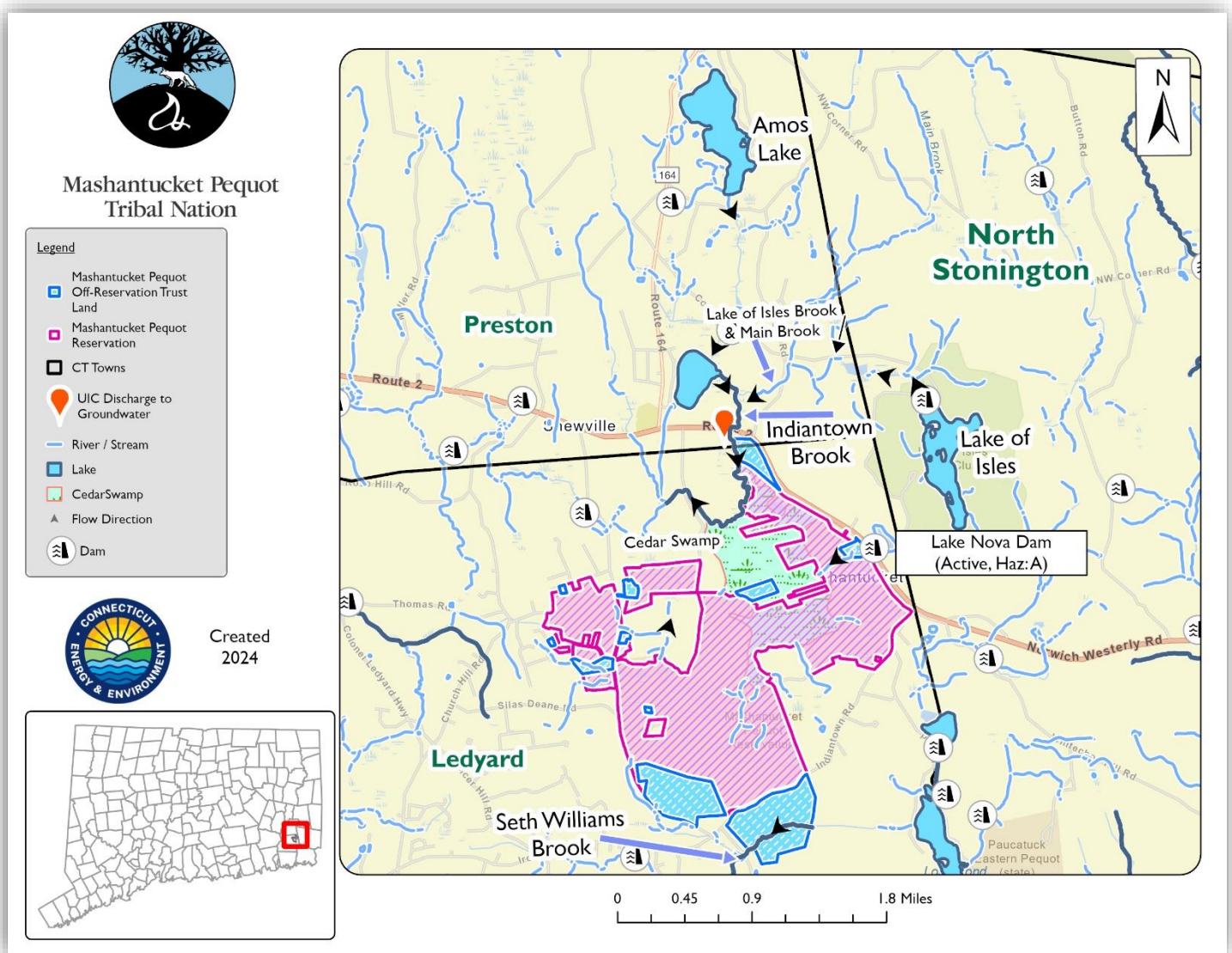
Located south of State Highway 2A (on the Mohegan Reservation), Tantaquidgeon Pond Dam has a Hazard Class of ‘A’ (Low Hazard Potential) and is active. This dam is owned by the local municipality.

Northwest of the northernmost section of the reservation exists a state-owned active dam named Trading Cove Pond Dam. This dam is located adjacent to the reservation and the Yale New Haven Health Uncasville Medical Center at Mohegan Sun (located on the Mohegan Reservation). The Trading Cove Pond Dam has a Hazard Class of ‘BB’ (moderate hazard).

In the southernmost section of the Off-Reservation Trust land of the Mohegan Tribe, there is a privately owned active dam named Mohegan Brook Dam. This dam is located outside of the off-reservation trust land. Water flows southernly, away from the reservation. The Mohegan Brook Dam has a Hazard Class of ‘BB’ (moderate hazard).

Mashantucket Pequot Tribal Nation

Map (Figure 2)



About, General Location, and Hydrology

The Mashantucket Pequot Tribe is a federally recognized sovereign tribe. The reservation is approximately 1,630 acres in size and is located in the southeastern section of Connecticut (Figure 2). The majority of the Reservation is surrounded by the town of Ledyard with a relatively small area to the north in Preston.

The Mashantucket Pequot Tribal Land consists of Reservation land and Off-Reservation trust land.

IWQR and Water Quality Action Plan Information

Indiantown Brook (CT3002-04_01), located north of the Mashantucket Pequot Reservation, is an assessed waterbody on the 2022 IWQR. Indiantown Brook receives water directly from Avery Pond (CT3002-04-1-L1_01). In the downstream waters, Indiantown Brook receives waters indirectly from Lake of Isles (via the Lake of Isles Brook and Main Brook) and indirectly from Amos Lake (see Figure 2).

Water flow southwards from Amos Lake via an unnamed stream into Crooks Pond (not labeled on the map in Figure 2). Water then continues to flow south to Avery Pond. Avery Pond outflow is located at the easternmost point of Avery Pond. The outflow from Avery Pond becomes Indiantown Brook which then flows southeast and joins with the Main Brook to receive outflow from Lake of Isles.

Water from Lake of Isles flow westerly via Lake of Isles Brook. This stream then flows to join Main Brook and continues west to meet with Indiantown Brook.

See Table 2 for a full list of contributing assessed waterbodies to the tribal waters and their 2024 IWQR status.

Table 2: List of all Assessed Waters of the State that flow into the Mashantucket Pequot Reservation

| Assessed Unit ID | Waterbody Name | 2024 IWQR Status | |
|-------------------|---------------------|------------------|---|
| | | Recreation | Habitat for Fish, Other Aquatic Life and Wildlife |
| CT3002-04-1-L1_01 | Avery Pond | Fully Supporting | Fully Supporting |
| CT3002-02-1-L2_01 | Amos Lake | Fully Supporting | Not Supporting |
| CT3002-06-1-L1_01 | Lake Of Isles | Not Assessed | Not Assessed |
| CT3002-04_01 | Indiantown Brook | Not Assessed | Not Supporting |
| CT2103-00_03 | Seth Williams Brook | Not Assessed | Not Supporting |

It is possible that some sections of Indiantown Brook (CT3002-04_01) flow in and out of Reservation and State areas. Indiantown Brook most likely influences the wetland (Cedar Swamp) located partially on the Reservation. Further investigation is needed into the hydrology of Indiantown Brook to determine its true course and hydrology. Indiantown Brook is currently listed as impaired for Aquatic Life Uses.

Seth Williams Brook (CT2103-00_03) starts its flow within the southernmost boundaries of the Mashantucket Pequot Reservation. Waters in this stream flow southwest into Connecticut. As shown on the map (Figure 2), the northernmost section of Seth Williams (within the reservation boundaries) has an Assessed Unit ID (CT2103-00_03) and is currently included in the draft 2024 IWQR. Because this section of this segment is within the boundaries of the Mashantucket Pequot Off-Reservation Trust Land, the stream segment description is proposed for revision to exclude waters located within the Tribal reservation land and only be associated with waters within Connecticut.

Potential Sources of Pollutants

There are no regulated point sources that would influence the upstream waters before the waters flow through the reservation.

Dams

There is one privately owned active upstream dam located off the reservation that impacts tribal waters. The dam is located east of the reservation and east of CT Route 2. The structure dams water flowing westerly from Lake Nova towards the Mashantucket Pequot reservation. The dam has a hazard class of 'A' (Low Hazard Potential).

Connecticut State Recognized Tribal Reservations

Schaghticoke Tribal Nation

Map (Figure 3)

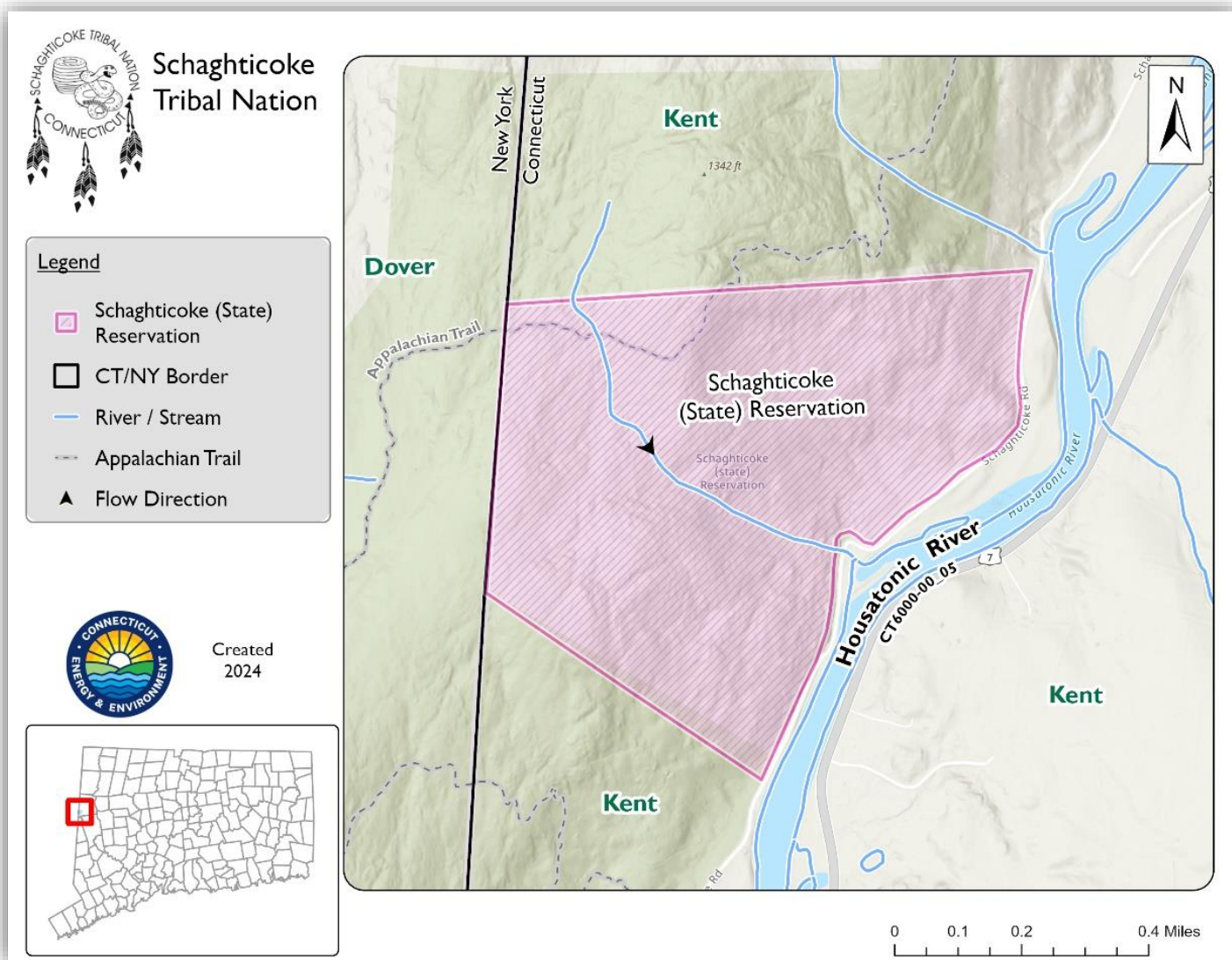


Figure 3 – Schaghticoke (State) Reservation, General Location and Hydrology

About, General Location, And Hydrology

The Schaghticoke Tribe is a Connecticut State-recognized tribe. The reservation is approximately 277 acres in size and is located in the northwesternmost section of Connecticut (Figure 3). The reservation is near the state border between Connecticut and New York and the Housatonic River. The entire Reservation is surrounded by the town of Kent, CT. Approximately 0.5 miles of the Appalachian Trail crosses into the Schaghticoke Reservation in the northwestern corner.

IWQR and Water Quality Action Plan Information

There is one unnamed stream that flows from state land into the Schaghticoke (State) Reservation and leaves the reservation when it enters the Housatonic River. This stream is a tributary to the Housatonic River and has not been assigned a Waterbody ID. The Housatonic River (CT6000-00_05) is adjacent to tribal reservation.

Potential Sources of Pollutants

There are no regulated point sources that would influence the upstream waters before the waters flow through the reservation. The Housatonic River is affected by releases of Polychlorinated Biphenyls, a group of chemicals that were released from the General Electric facility upstream in Pittsfield MA. More information is available on the EPA project web page: [EPA Cleanups: GE-Pittsfield/Housatonic River Site | US EPA](#)

Dams With A Potential Impact

There are no upstream or downstream dams that would influence the quality or quantity of water to either Golden Hill Paugussett state reservations.

Golden Hill Paugussett Tribal Nation

Map (Figure 3)

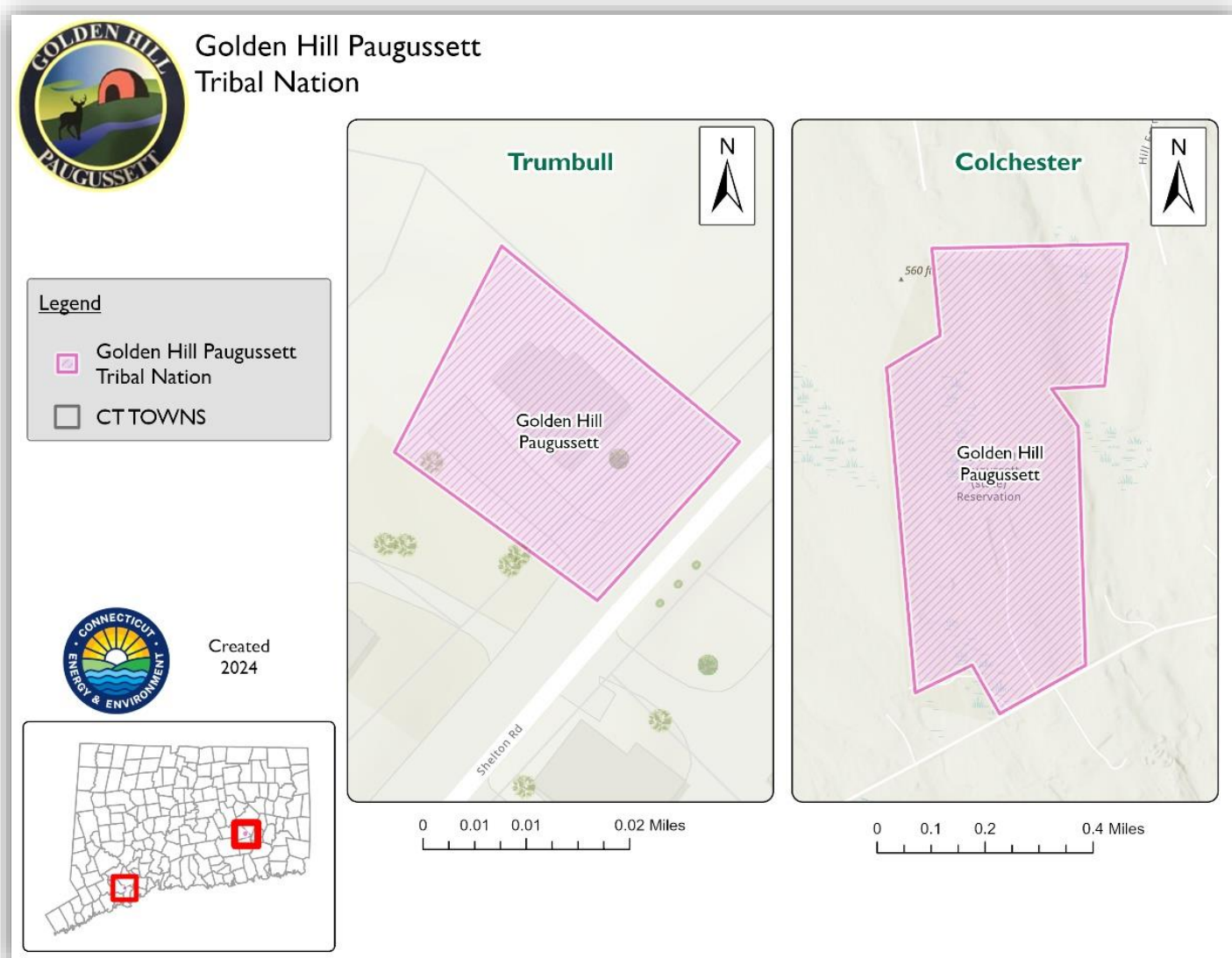


Figure 4 – Golden Hill Paugussett (State) Reservation, General Location and Hydrology

About, General Location, and Hydrology

The Golden Hill Paugussett Tribe is a Connecticut State-recognized tribe. The reservation has two sites, one in Trumbull and the other in Colchester. The site in Trumbull is approximately 0.4 acres in size and the site in Colchester is approximately 176 acres in size.

IWQR and Water Quality Action Plan Information

There are no surface waters that flow into either the reservation site in Trumbull or Colchester.

Potential Sources Of Pollutants

There are no regulated point sources that would influence the upstream waters before the waters flow through the reservation.

Dams With A Potential Impact

There are no upstream or downstream dams that would influence the quality or quantity of water to either Golden Hill Paugussett state reservations.

Paucatuck Eastern Pequot Tribal Nation

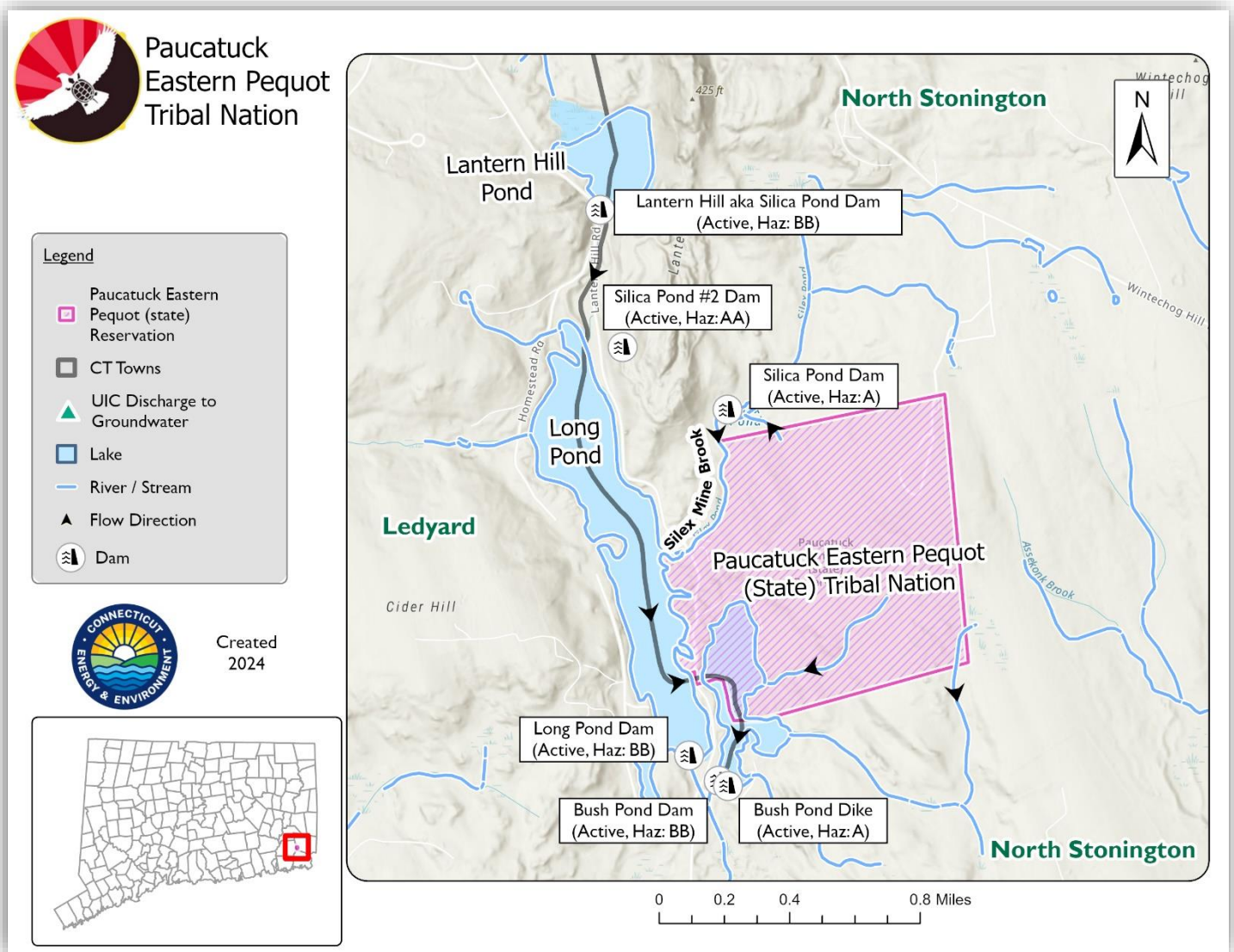


Figure 5 – Eastern Pequot (Paucatuck) (State) Reservation, General Location and Hydrology

About, General Location, And Hydrology

Eastern Pequot (Paucatuck) (State) Tribe is a Connecticut State-recognized tribe. The reservation is approximately 243 acres in size and is located in the southeast corner of Connecticut (Figure 5) within the town of North Stonington, CT. The reservation runs along the Silica Mine Brook and Long Pond. Approximately 23 acres of Long Pond are within the reservation.

IWQR and Water Quality Action Plan Information

Long Pond (CT2104-00-1-L2_01) is an assessed waterbody with approximately 23 acres on the Paucatuck Eastern Pequot Reservation. Water from Lantern Hill Pond (CT2104-00-1-L1_01) flow southwards to become an inlet to Long Pond. See Table 3 for 2024 IWQR Status.

Table 3: List of all Assessed Waters of the State that flow into the Paucatuck Eastern Pequot Reservation to become Tribal Waters.

| Assessed Unit ID | Waterbody Name | <u>2024 IWQR Status</u> | |
|-------------------|----------------|--------------------------|---|
| | | Recreation | Habitat for Fish, Other Aquatic Life and Wildlife |
| CT2104-00-1-L2_01 | Long Pond | Insufficient Information | Insufficient Information |
| CT2104-00-1-L1_01 | Lantern Hill | Not Assessed | Not Assessed |

Potential Sources of Pollutants

There are no regulated point sources that would influence the upstream waters before the waters flow through the reservation.

Dams With A Potential Impact

To the north of the Paucatuck Eastern Pequot reservation (not on the reservation) there are two dams. The dam located on Lantern Hill Pond, Lantern Hill (aka Silica Pond Dam) is an active dam with unknown ownership and has a hazard class of 'BB' (moderate hazard).

Silica Pond #2 Dam is an active dam with unknown ownership and has a hazard class of 'AA' (negligible hazard). It is not clear if the downstream flow of water from Silica Pond #2 is hydrologically connected to Long Pond.

Silex Pond Dam is located north of the Paucatuck Eastern Pequot reservation (not on the reservation) on the Silex Pond. It is an active dam with unknown ownership and has a hazard class of 'A' (Low Hazard Potential). Water flowing downstream of the dam via the Silex Mine Brook runs parallel to the border of the reservation.

To the south of the reservation (not on the reservation), at the southern end of Long Pond, there are three dams, Long Pond Dam, Bush Pond Dam, and Bush Pond Dike. These three dams have a hazard class of 'BB', 'BB', and 'A' respectively. The Long Pond Dam impounds water for Long Pond. Bush Pond Dam and Bush Pond Dike are systems on the Whiteford Brook waterbody.