

Dominion Nuclear Connecticut, Inc.
Rope Ferry Rd., Waterford, CT 06385

Mailing Address: P.O. Box 128
Waterford, CT 06385

dom.com



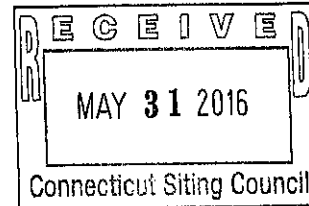
Dominion®

MAY 26 2016

Serial No.
MPS NSSL/GJC

RA-16-019
R0

Melanie A. Bachman
Acting Executive Director
Connecticut Siting Council
10 Franklin Square
New Britain, CT 06051



**Re: Dominion Nuclear Connecticut, Inc. – Notice of Exempt Modification
Millstone Power Station – Installation of Diesel Generator for
Unit 3 Shutdown Instrument Air System**

Dear Ms. Bachman:

As you are aware, Dominion Nuclear Connecticut, Inc. (DNC) owns and operates Millstone Power Station (MPS) in Waterford, Connecticut. In an effort to enhance the MPS Unit 3 (MPS3) Instrument Air System and improve operational reliability, DNC plans to install a new permanent diesel generator to provide power to a motor driven air compressor. The diesel generator will be located adjacent to the west side of the Condensate Polishing Facility (CPF), MPS Building No. 212. (See MPS Building Facilities Site Plan included in Attachment 1 and New Diesel Generator Location Plan in Attachment 2). The motor driven air compressor will be located inside the CPF Building. The new generator will start automatically allowing the air compressor to supply instrument air when a predetermined set point on the instrument air system is reached.

The skid mounted generator dimensions measures 152.83 inches long, 54.72 inches wide and 92.52 inches high and is manufactured by Atlas Copco (Attachment 3). The generator will be placed on a 10 foot x 20 foot concrete pad in a developed portion of the MPS site. DNC plans to complete the installation of this new generator in the third quarter of 2016.

Please accept this letter as notification pursuant to R.C.S.A. §16-50j-58, for construction that constitutes an exempt modification pursuant to R.C.S.A. §16-50j-57(b) (2). In accordance with R.C.S.A. § 16-50j-58, a copy of this letter is being sent to Daniel M. Steward, First Selectman for the Town of Waterford.

The planned installation of the new diesel generator described above falls squarely with those activities explicitly provided in R.C.S.A. §16-50j-57 (b)(2).

1. The new diesel generator will be located within the limits of the MPS Protected Area and will not require an expansion of the MPS site boundaries.
2. The installation of a new diesel generator will not result in an increase in height of any associated equipment or buildings at MPS.
3. The installation of a new diesel generator will not result in an increase in noise at the MPS site boundary by 6 decibels or more, or to levels that exceed state and local criteria.
4. The installation of a new diesel generator will not cause an increase to the electric or magnetic field levels at the MPS site boundary.

5. The installation of a new diesel generator on a 10 foot x 20 foot concrete pad adjacent to Building No. 212 will not cause any significant adverse change or alteration in the physical or environmental characteristics of the MPS site.
6. The installation of a new diesel generator will not result in any impact to the structural integrity of any buildings or structures at the MPS site.

For these reasons, DNC respectfully submits that the modifications described above to MPS constitute an exempt modification under R.C.S.A. §16-50j-57(b)(2).

A check in the amount of \$625.00 is enclosed.

Sincerely,



B. L. Stanley
Director, Nuclear Station Safety and Licensing

Attachments:

1. Millstone Power Station Site Plan
2. New Diesel Generator Location Plan
3. Specification for Atlas Copco Diesel Generator
4. Check for Filing Fee

cc:

Daniel Steward, First Selectman, Town of Waterford
Lillian M. Cuoco, Esq.
Clark D. Maxson
Thomas J. Bransfield

ATTACHMENT 1

MILLSTONE POWER STATION SITE PLAN

**MILLSTONE POWER STATION
DOMINION NUCLEAR CONNECTICUT, INC. (DNC)**

ATTACHMENT 1



JORDAN COVE

LONG ISLAND SOUND

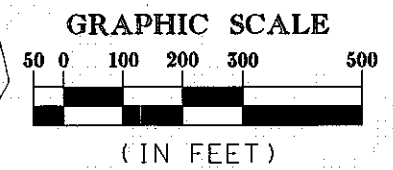
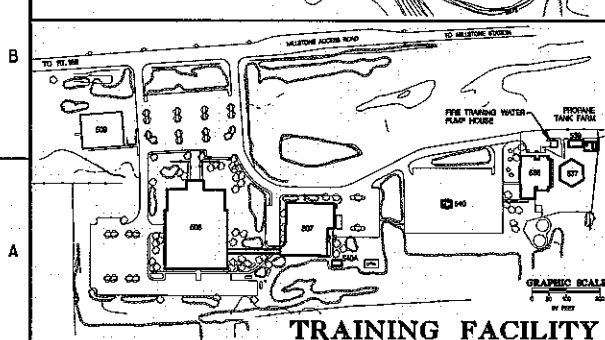
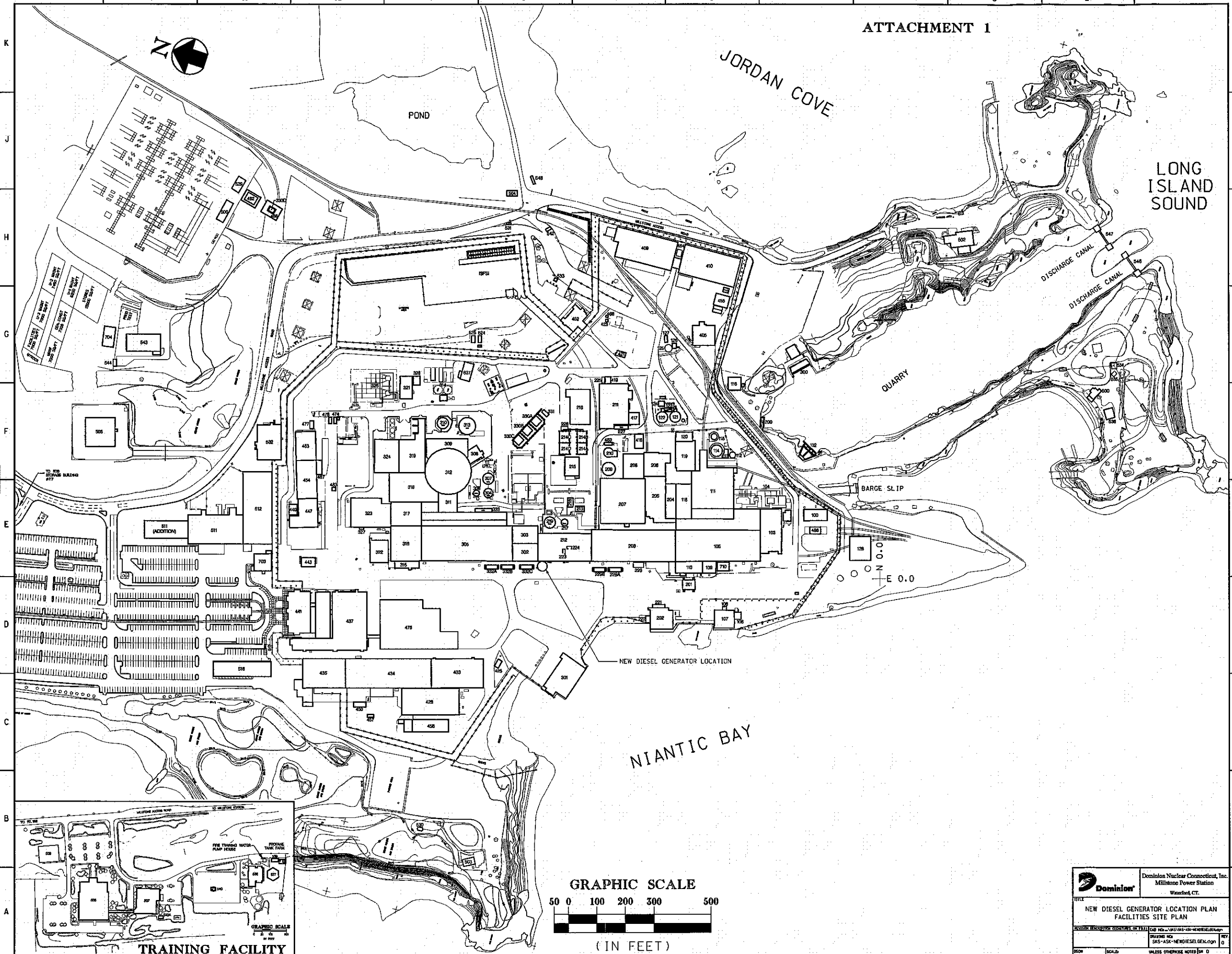
DISCHARGE CANAL

QUARRY

BARGE SLIP

NEW DIESEL GENERATOR LOCATION

NIANTIC BAY

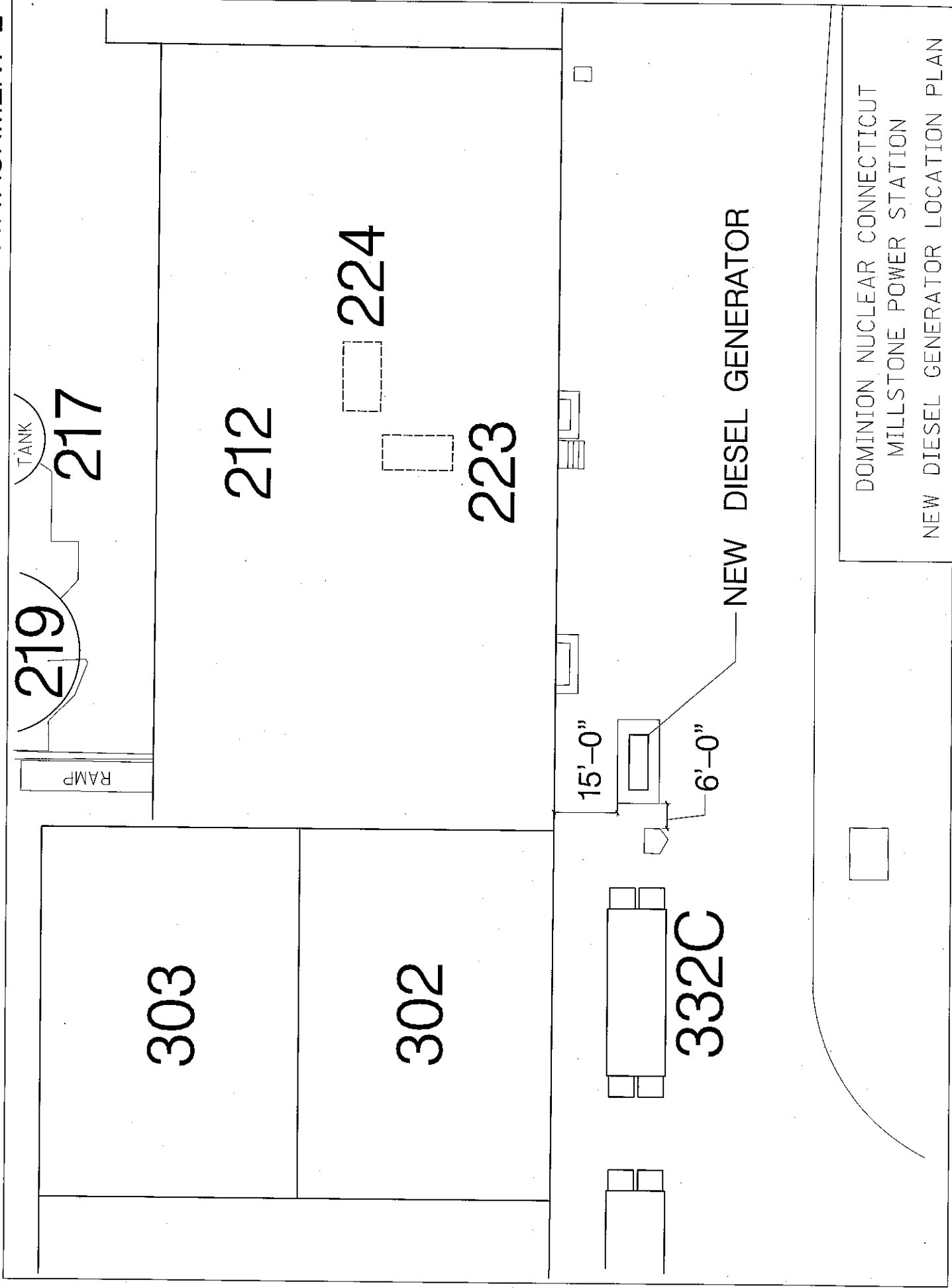


	Dominion Nuclear Connecticut, Inc. Milestone Power Station Windsor, CT.
TITLE NEW DIESEL GENERATOR LOCATION PLAN FACILITIES SITE PLAN	
REVISIONS NO. 1 DATE 10/13/10 BY SRS-ASK-NEW DIESEL GEN. PLAN	
SCALE	UNLESS OTHERWISE NOTED 1" = 100'

ATTACHMENT 2

NEW DIESEL GENERATOR LOCATION PLAN

**MILLSTONE POWER STATION
DOMINION NUCLEAR CONNECTICUT, INC. (DNC)**

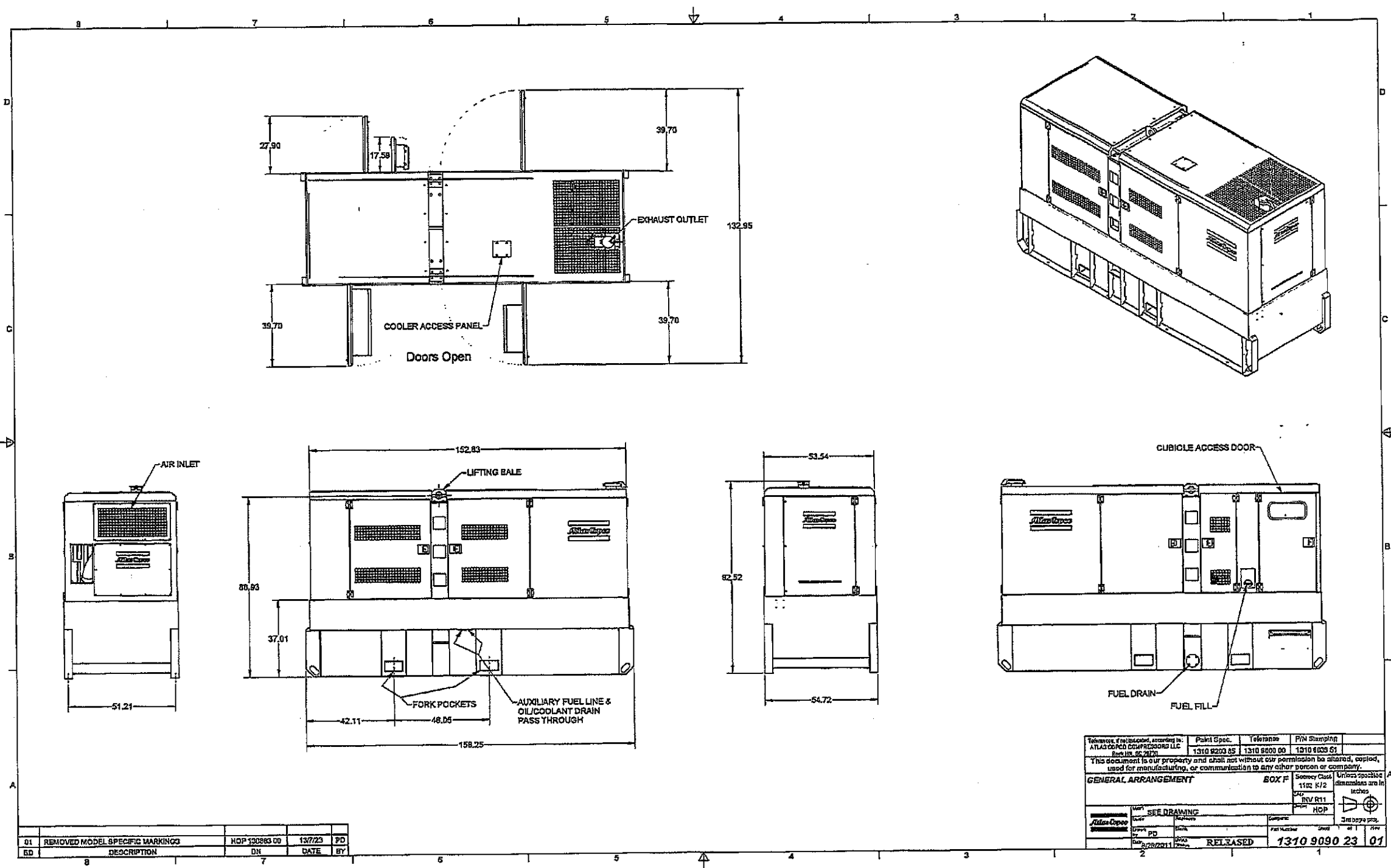


DOMINION NUCLEAR CONNECTICUT
MILLSTONE POWER STATION
NEW DIESEL GENERATOR LOCATION PLAN

ATTACHMENT 3

SPECIFICATION FOR ATLAS COPCO DIESEL GENERATOR

**MILLSTONE POWER STATION
DOMINION NUCLEAR CONNECTICUT, INC. (DNC)**



NO	DESCRIPTION	DATE	BY
01	REMOVED MODEL SPECIFIC MARKINGS	12/7/23	PD
SD			

Telephone: 1-800-451-7871	Plant Spec. 1310 9090 00	Telephone 1310 9090 00	P/N Shipping 1310 9090 01
ATLAS COPCO COMPRESSORS LLC	Box 118, 28771	1310 9090 00	1310 9090 01
This document is our property and shall not without our permission be altered, copied, used for manufacturing, or communication to any other person or company.			
GENERAL ARRANGEMENT		BOX F	Unless specified dimensions are in inches
Unit: SEE DRAWING	Scale: 1:1	Revision: R11	Drawn by: HOP
Author: PD	Check: [blank]	Part Number: 1310 9090 23	Sheet: 01
Date: 8/26/2011	Released: [blank]	1310 9090 23 01	

ATTACHMENT 3

ATTACHMENT 4

CHECK FOR FILING FEE

**MILLSTONE POWER STATION
DOMINION NUCLEAR CONNECTICUT, INC. (DNC)**