

• • **T** • • Mobile •



ENGINEERING FINAL AFFIDAVIT

CT11287A

Durham/RT 68

ADDRESS:

1605 Durham Road
Wallingford, CT 06492

DATE:

February 4, 2021



R.K. Executive Centre ■ 201 Boston Post Road West ■ Suite 101 ■ Marlborough, MA 01752

t. 508.481.7400 ■ www.chappellengineering.com ■ f. 508.481.7406

February 4, 2021

T-Mobile Northeast LLC

15 Commerce Way, Suite B
Norton, MA 02766

**Reference: Engineering Field Visit and Completion Affidavit
Site CT11287A – Durham/RT 68
1605 Durham Road, Wallingford, CT 06492
CEA Job Number 1815.063**

Site Description:

The site is located at an existing telecommunication compound in Wallingford, Connecticut. The site includes ground level equipment mounted to the concrete pad, as well as antennas, RRHs & ancillary equipment mounted to the monopole. (3) New panel antennas & (3) new RRHs were mounted to the reinforced mounting platform on the existing monopole. (1) New signal cable routed along the existing cable path from the equipment cabinet to the antenna array. New Radio equipment installed within the existing ground level equipment cabinets mounted to the existing concrete pad. All the new equipment was tied into the existing ground system on site. Existing site telco & power were utilized for the upgrade.

Engineering Field Visit

Based on photographs taken by others November 2020, Chappell Engineering Associates, LLC (CEA) has verified the newly installed T-Mobile equipment described above is in general conformance to the engineering construction documents (Revision #1 "Issued For Construction" dated 07/29/19). The following site photos and field visit documents the installation, and the enclosed Schedule of Special Inspection is attached as requested.

Very truly yours,
CHAPPELL ENGINEERING ASSOCIATES, LLC



Clement J. Salek, P.E.



Existing T-Mobile Equipment Cabinets Mounted To Existing Concrete Pad

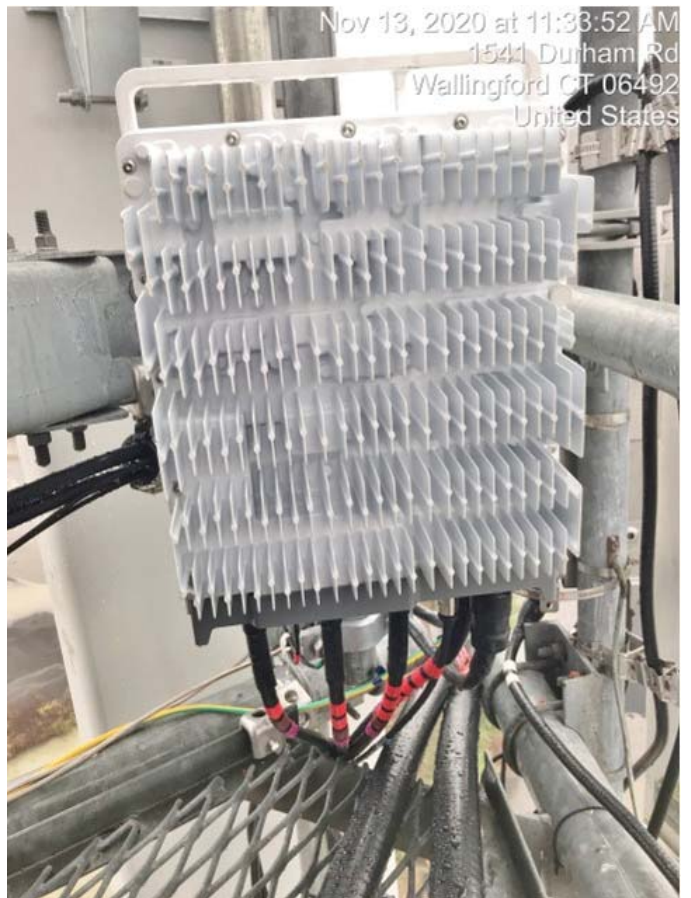


(1) New Signal Cable Routed Along Existing Ice Bridge From The Cabinet To The Monopole



Alpha Sector: (1) New Antenna & (1) New RRH Mounted To The Reinforce Mounting Platform On The Existing Monopole

Beta Sector: (1) New Antenna & (1) New RRH Mounted To The Reinforce Mounting Platform On The Existing Monopole



Gamma Sector: (1) New Antenna & (1) New RRH Mounted To The Reinforce Mounting Platform On The Existing Monopole

(1) New RRH Mounted Behind The New Antenna (Typical)