



October 23, 2015

Members of the Siting Council
Connecticut Siting Council
Ten Franklin Square
New Britain, CT 06051

RE: Notice of Exempt Modification
398 Pomfret Street
Pomfret, CT 06258
N 41.89031
W -71.95508
T-Mobile Site #: CT11525A_L700

Members of the Siting Council:

On behalf of T-Mobile, SBA Communications is submitting an exempt modification application to the Connecticut Siting council for modification of existing equipment at a tower facility located at 398 Pomfret Street, Pomfret, CT.

The 398 Pomfret Street facility consists of a 168' Monopole Tower owned and operated by SBA Properties, LLC. In order to accommodate technological changes and enhance system performance in the State of Connecticut, T-Mobile plans to modify the equipment configurations at many of its existing cell sites. Please accept this letter and attachments as notification, pursuant to R.C.S.A. Section 16-50j-73, of construction which constitutes an exempt modification pursuant to R.C.S.A. Section 16-50j-72(b)(2). In compliance with R.C.S.A. Section 16-50j-73, a copy of this letter and attachments is being sent to the chief elected official of the municipality in which the affected cell site is located First Selectman Maureen Nicholson. (The Town is also the property owner in this instance.)

As part of T-Mobile's L700 project, T-Mobile desires to upgrade their equipment to meet the new standards of 4G technology. The new equipment will allow customers to download files and browse the internet at a high rate of speed while also allowing their phones to be compatible with the latest 4G technology.

Attached is a summary of the planned modifications, including power density calculations reflecting the change in T-Mobile's operations at the site along with the required fee of \$625.

The changes to the facility do not constitute modifications as defined in Connecticut General Statutes (“C.G.S.”) Section 16-50i(d) because the general physical characteristics of the facility will not be significantly changed or altered. Rather, the planned changes to the facility fall squarely within those activities explicitly provided for in R.C.S.A. Section 16-50j-72(b)(2).

1. The overall height of the structure will be unaffected.
2. The proposed changes will not extend the site boundaries. There will be no effect on the site compound other than the new equipment cabinet.
3. The proposed changes will not increase the noise level at the existing facility by six decibels or more.
4. The changes in radio frequency power density will not increase the calculated “worst case” power density for the combined operations at the site to a level at or above the applicable standard for uncontrolled environments as calculated for a mixed frequency site.

For the foregoing reasons, SBA Communications on behalf of T-Mobile, respectfully submits that the proposed changes at the referenced site constitute exempt modifications under R.C.S.A. Section 16-50j-72(b)(2).

Please feel free to call me at 508.251.0720 x 3804 with any questions you may have concerning this matter.

Thank you,



Kri Pelletier
SBA Communications Corporation
33 Boston Post Road West Suite 320
Marlborough, MA 01752
508-251-0720 x 3804 + T
508-251-1755 + F
203-446-7700 + C
kpelletier@sbsite.com



T-Mobile

Equipment Modification

398 Pomfret Street, Pomfret, CT 06259
Site number CT11525A_L700

Tower Owner: SBA Properties, LLC

Equipment Configuration: Monopole

Current and/or approved:

- (6) EMS RR90-17-02DP - Panel
- (6) Allen Telecom FE15501P77/75
- (12) 1-5/8" lines

Final Configuration:

- (3) RFS APXV18-206516S-C-A20 - Panel
- (3) Commscope LNX-6515DS-VTM - Panel
- (3) Allen Telecom FE15501P77/75
- (3) Ericsson KRY 112 144/1
- (3) Kathrein 782 11056
- (12) 1-5/8" lines

Structural Information:

The attached structural analysis demonstrates that the tower and foundation will have adequate structural capacity to accommodate the proposed modifications.

Power Density:

The anticipated Maximum Composite contributions from the T-Mobile facility are 1.47% of the allowable FCC established general public limit. The anticipated composite MPE value for this site assuming all carriers present is 3.98% of the allowable FCC established general public limit sampled at the ground level.

Site Composite MPE%	
Carrier	MPE%
T-Mobile (Per Sector Max)	1.47 %
Verizon Wireless	2.36 %
Sprint	0.15 %
Site Total MPE %:	3.98 %

October 23, 2015

Maureen Nicholson
First Selectman
Town of Pomfret
5 Haven Road
Pomfret Center, CT 06259

RE: Telecommunications Facility @ 398 Pomfret Street, Pomfret, CT


Dear Ms. Nicholson,

In order to accommodate technological changes and enhance system performance in the State of Connecticut, T-Mobile will be changing its equipment configuration at certain cell sites.

As required by Regulations of Connecticut State Agencies (R.C.S.A.) Section 16-50j-73, the Connecticut Siting Council has been notified of the changes and will review T-Mobile's proposal. Please accept this letter as notification under Section 16-50j-73 of construction which constitutes an exempt modification pursuant to R.C.S.A. Section 16-50j-72(b)(2).

The accompanying letter to the Siting Council fully describes T-Mobile's proposal for the referenced cell site. However, if you have any questions or require any further information on our plans or the Siting Council's procedures, please call me at 508.251.0720 x 3804.

Thank you,



Kri Pelletier
SBA Communications Company
33 Boston Post Road West Suite 320
Marlborough, MA 01752
508-251-0720 x 3804 + T
508-251-1755 + F
203-446-7700 + C
kpelletier@sbsite.com

**RADIO FREQUENCY EMISSIONS ANALYSIS REPORT
EVALUATION OF HUMAN EXPOSURE POTENTIAL
TO NON-IONIZING EMISSIONS**

T-Mobile Existing Facility

Site ID: CT11525A

**CT525 . SBA Pomfret #2
398 Pomfret Street
Pomfret, CT 06259**

October 22, 2015

EBI Project Number: 6215005336

Site Compliance Summary	
Compliance Status:	COMPLIANT
Site total MPE% of FCC general public allowable limit:	3.98 %

October 22, 2015

T-Mobile USA
Attn: Jason Overbey, RF Manager
35 Griffin Road South
Bloomfield, CT 06002

Emissions Analysis for Site: **CT11525A – CT525 . SBA Pomfret #2**

EBI Consulting was directed to analyze the proposed T-Mobile facility located at **398 Pomfret Street, Pomfret, CT**, for the purpose of determining whether the emissions from the Proposed T-Mobile Antenna Installation located on this property are within specified federal limits.

All information used in this report was analyzed as a percentage of current Maximum Permissible Exposure (% MPE) as listed in the FCC OET Bulletin 65 Edition 97-01 and ANSI/IEEE Std C95.1. The FCC regulates Maximum Permissible Exposure in units of microwatts per square centimeter ($\mu\text{W}/\text{cm}^2$). The number of $\mu\text{W}/\text{cm}^2$ calculated at each sample point is called the power density. The exposure limit for power density varies depending upon the frequencies being utilized. Wireless Carriers and Paging Services use different frequency bands each with different exposure limits, therefore it is necessary to report results and limits in terms of percent MPE rather than power density.

All results were compared to the FCC (Federal Communications Commission) radio frequency exposure rules, 47 CFR 1.1307(b)(1) – (b)(3), to determine compliance with the Maximum Permissible Exposure (MPE) limits for General Population/Uncontrolled environments as defined below.

General population/uncontrolled exposure limits apply to situations in which the general public may be exposed or in which persons who are exposed as a consequence of their employment may not be made fully aware of the potential for exposure or cannot exercise control over their exposure. Therefore, members of the general public would always be considered under this category when exposure is not employment related, for example, in the case of a telecommunications tower that exposes persons in a nearby residential area.

Public exposure to radio frequencies is regulated and enforced in units of microwatts per square centimeter ($\mu\text{W}/\text{cm}^2$). The general population exposure limit for the 700 MHz Band is approximately 467 $\mu\text{W}/\text{cm}^2$, and the general population exposure limit for the 1900 MHz (PCS) band is 1000 $\mu\text{W}/\text{cm}^2$. Because each carrier will be using different frequency bands, and each frequency band has different exposure limits, it is necessary to report percent of MPE rather than power density.

Occupational/controlled exposure limits apply to situations in which persons are exposed as a consequence of their employment and in which those persons who are exposed have been made fully aware of the potential for exposure and can exercise control over their exposure. Occupational/controlled exposure limits also apply where exposure is of a transient nature as a result of incidental passage through a location where exposure levels may be above general population/uncontrolled limits (see below), as long as the exposed person has been made fully aware of the potential for exposure and can exercise control over his or her exposure by leaving the area or by some other appropriate means.

Additional details can be found in FCC OET 65.

CALCULATIONS

Calculations were done for the proposed T-Mobile Wireless antenna facility located at **398 Pomfret Street, Pomfret, CT**, using the equipment information listed below. All calculations were performed per the specifications under FCC OET 65. Since T-Mobile is proposing highly focused directional panel antennas, which project most of the emitted energy out toward the horizon, all calculations were performed assuming a lobe representing the maximum gain of the antenna per the antenna manufactures supplied specifications, minus 10 dB, was focused at the base of the tower. For this report the sample point is the top of a 6 foot person standing at the base of the tower.

For all calculations, all equipment was calculated using the following assumptions:

- 1) 2 GSM channels (PCS Band - 1900 MHz) were considered for each sector of the proposed installation. These Channels have a transmit power of 30 Watts per Channel
- 2) 2 UMTS channels (PCS Band - 1900 MHz) were considered for each sector of the proposed installation. These Channels have a transmit power of 30 Watts per Channel.
- 3) 2 LTE channels (PCS Band - 1900 MHz) were considered for each sector of the proposed installation. These Channels have a transmit power of 60 Watts per Channel.
- 4) 1 LTE channel (700 MHz Band) was considered for each sector of the proposed installation. This channel has a transmit power of 30 Watts.
- 5) Since the radios are ground mounted there are additional cabling losses accounted for. For each RF path the following losses were calculated. 0.95 dB of additional cable loss at 700 MHz and 1.96 dB of additional cable loss at 1900 MHz. This is based on manufacturers Specifications for 170 feet of 1-5/8" coax cable on each path.

- 6) All radios at the proposed installation were considered to be running at full power and were uncombined in their RF transmissions paths per carrier prescribed configuration. Per FCC OET Bulletin No. 65 - Edition 97-01 recommendations to achieve the maximum anticipated value at each sample point, all power levels emitting from the proposed antenna installation are increased by a factor of 2.56 to account for possible in-phase reflections from the surrounding environment. This is rarely the case, and if so, is never continuous.
- 7) For the following calculations the sample point was the top of a six foot person standing at the base of the tower. The maximum gain of the antenna per the antenna manufactures supplied specifications minus 10 dB was used in this direction. This value is a very conservative estimate as gain reductions for these particular antennas are typically much higher in this direction.
- 8) The antennas used in this modeling are the **RFS APXV18-206516S-C-A20** for 1900 MHz (PCS) channels and the **Commscope LNX-6515DS-VTM** for 700 MHz channels. This is based on feedback from the carrier with regards to anticipated antenna selection. The **RFS APXV18-206516S-C-A20** has a maximum gain of **16.3 dBd** at their main lobe. The **Commscope LNX-6515DS-VTM** has a maximum gain of **14.6 dBd** at its main lobe. The maximum gain of the antenna per the antenna manufactures supplied specifications, minus 10 dB, was used for all calculations. This value is a very conservative estimate as gain reductions for these particular antennas are typically much higher in this direction.
- 9) The antenna mounting height centerline of the proposed antennas is **147 feet** above ground level (AGL).
- 10) Emissions values for additional carriers were taken from the Connecticut Siting Council active database. Values in this database are provided by the individual carriers themselves.

All calculations were done with respect to uncontrolled / general public threshold limits.

T-Mobile Site Inventory and Power Data

Sector:	A	Sector:	B	Sector:	C
Antenna #:	1	Antenna #:	1	Antenna #:	1
Make / Model:	RFS APXV18-206516S-C-A20	Make / Model:	RFS APXV18-206516S-C-A20	Make / Model:	RFS APXV18-206516S-C-A20
Gain:	16.3 dBd	Gain:	16.3 dBd	Gain:	16.3 dBd
Height (AGL):	147	Height (AGL):	147	Height (AGL):	147
Frequency Bands	1900 MHz(PCS)	Frequency Bands	1900 MHz(PCS)	Frequency Bands	1900 MHz(PCS)
Channel Count	8	Channel Count	8	# PCS Channels:	8
Total TX Power:	240	Total TX Power:	240	# AWS Channels:	240
ERP (W):	6,686.69	ERP (W):	6,686.69	ERP (W):	6,686.69
Antenna A1 MPE%	1.21	Antenna B1 MPE%	1.21	Antenna C1 MPE%	1.21
Antenna #:	2	Antenna #:	2	Antenna #:	2
Make / Model:	Commscope LNX-6515DS-VTM	Make / Model:	Commscope LNX-6515DS-VTM	Make / Model:	Commscope LNX-6515DS-VTM
Gain:	14.6 dBd	Gain:	14.6 dBd	Gain:	14.6 dBd
Height (AGL):	147	Height (AGL):	147	Height (AGL):	147
Frequency Bands	700 MHz	Frequency Bands	700 MHz	Frequency Bands	700 MHz
Channel Count	1	Channel Count	1	Channel Count	1
Total TX Power:	30	Total TX Power:	30	Total TX Power:	30
ERP (W):	685.68	ERP (W):	685.68	ERP (W):	685.68
Antenna A2 MPE%	0.27	Antenna B2 MPE%	0.27	Antenna C2 MPE%	0.27

Site Composite MPE%	
Carrier	MPE%
T-Mobile (Per Sector Max)	1.47 %
Verizon Wireless	2.36 %
Sprint	0.15 %
Site Total MPE %:	3.98 %

T-Mobile Sector 1 Total:	1.47 %
T-Mobile Sector 2 Total:	1.47 %
T-Mobile Sector 3 Total:	1.47 %
Site Total:	3.98 %

T-Mobile _per sector	# Channels	Watts ERP (Per Channel)	Height (feet)	Total Power Density ($\mu\text{W}/\text{cm}^2$)	Frequency (MHz)	Allowable MPE ($\mu\text{W}/\text{cm}^2$)	Calculated % MPE
T-Mobile 1900 MHz (PCS) LTE	2	1671.67	147	6.05	2100	1000	0.60 %
T-Mobile 1900 MHz (PCS) GSM	2	835.84	147	3.02	1900	1000	0.30 %
T-Mobile 1900 MHz (PCS) UMTS	2	835.84	147	3.02	2100	1000	0.30 %
T-Mobile 700 MHz LTE	1	685.68	147	1.24	700	467	0.27 %
						Total:	1.47%

Summary

All calculations performed for this analysis yielded results that were **within** the allowable limits for general public exposure to RF Emissions.

The anticipated maximum composite contributions from the T-Mobile facility as well as the site composite emissions value with regards to compliance with FCC's allowable limits for general public exposure to RF Emissions are shown here:

T-Mobile Sector	Power Density Value (%)
Sector 1:	1.47 %
Sector 2:	1.47 %
Sector 3 :	1.47 %
T-Mobile Per Sector Maximum:	1.47 %
Site Total:	3.98 %
Site Compliance Status:	COMPLIANT

The anticipated composite MPE value for this site assuming all carriers present is **3.98%** of the allowable FCC established general public limit sampled at the ground level. This is based upon values listed in the Connecticut Siting Council database for existing carrier emissions.

FCC guidelines state that if a site is found to be out of compliance (over allowable thresholds), that carriers over a 5% contribution to the composite value will require measures to bring the site into compliance. For this facility, the composite values calculated were well within the allowable 100% threshold standard per the federal government.



Scott Heffernan
RF Engineering Director

EBI Consulting
21 B Street
Burlington, MA 01803



Tower Engineering Solutions

Phone (972) 483-0607, Fax (972) 975-9615
8445 Freeport Parkway, Suite 375, Irving, Texas 75063

Structural Analysis Report

Existing 168 ft. Summit Monopole
Customer Name: SBA Communications Corp
Customer Site Number: CT02217-S
Customer Site Name: Pomfret School
Carrier Name: T-Mobile
Carrier Site Number: CT11525A
Carrier Site Name: Unknown
Site Location: 398 Pomfret Street
Pomfret, Connecticut
Windham County
Latitude: 41.890094
Longitude: -71.955008

Analysis Result:

Max Structural Usage: 63.6% [Pass]
Max Foundation Usage: 70.1% [Pass]
Report Prepared By : Walter Velez



Introduction

The purpose of this report is to summarize the analysis results on the 168 ft. Summit Monopole to support the proposed antennas and transmission lines in addition to those currently installed. Any modification listed under Sources of Information was assumed completed and was included in this analysis.

Sources of Information

Tower Drawings	Monopole original shaft section data prepared by Summit, LLC & Paul J. Ford and Company. Dated 11-23-1999. Job No 29299-802. Design No 5762. Monopole previous structural report prepared by FDH Engineering, Inc. Dated 11-14-2014. Project No 146GSJ1400.
Foundation Drawing	N/A
Geotechnical Report	Monopole geotechnical report prepared by FDH Engineering, Inc. Dated 09-12-2012. Project No 1201570EG1.
Modification Drawings	N/A

Analysis Criteria

The analysis was performed in accordance with the requirements and stipulations of the ANSI/TIA-222-F. In accordance with this standard, the structure was analyzed using **TESPoles**, a proprietary analysis software. The program considers the structure as an elastic 3-D model with second-order effects and temperature effects incorporated in the analysis. The analysis was performed using multiple wind directions.

Basic Wind Speed Used in the Analysis:	85.0 mph (Fastest Mile)
Basic Wind Speed with Ice:	74 mph (Fastest Mile) with 1/2" radial ice concurrent
Operational Wind Speed:	50 mph + 0" Radial ice
Standard/Codes:	ANSI/TIA-222-F, 2003 IBC & 2005 Connecticut State Building Code

Existing Antennas, Mounts and Transmission Lines

The table below summarizes the antennas, mounts and transmission lines that were considered in the analysis as existing on the tower.

Items	Elevation (ft.)	Qty.	Antenna Descriptions	Mount Type & Qty.	Transmission Lines	Owner
1	167.0	6	Decibel DB908H90E-M w/ Mount Pipe	Low Profile Platform	(6) 1 5/8"	Sprint
2	157.0	6	Commscope HBXX-6517DS-VTM - Panel	Low Profile Platform	(12) 1 5/8"; (1) 1 5/8" Hybriflex	Verizon
3		6	Commscope LNX-6514DS-VTM - Panel			
4		3	ALU RRH 2x40-700U			
5		3	ALU RRH 2x60-AWS			
6		1	RFS DB-T1-6Z-8AB-OZ			
7	147.0	6	EMS RR90-17-02DP - Panel	Low Profile Platform	(12) 1 5/8"	T-Mobile
8		6	Allen Telecom FE15501P77/75			

Proposed Carrier’s Final Configuration of Antennas, Mounts and Transmission Lines

Information pertaining to the proposed carrier’s final configuration of antennas and transmission lines was provided by SBA Communications Corp. The proposed antennas and lines are listed below.

Items	Elevation (ft.)	Qty.	Antenna Descriptions	Mount Type & Qty.	Transmission Lines	Owner
9	147.0	3	RFS APXV18-206516S-C-A20 - Panel	Low Profile Platform w/ Reinforcement Kit Site Pro PRK-1245	(12) 1 5/8"	T-Mobile
10		3	Commscope LNX-6515DS-VTM - Panel			
11		3	Allen Telecom FE15501P77/75			
12		3	Ericsson KRY 112 144/1			
13		3	Kathrein 782 11056			

All transmission lines are considered running inside of the pole shaft.

Analysis Results

The results of the structural analysis, performed for the wind and ice loading and antenna equipment as defined above, are summarized as the following:

	Pole shafts	Anchor Bolts	Base Plate
Max. Usage:	63.6%	58.8%	57.7%
Pass/Fail	Pass	Pass	Pass

Foundations

	Moment (Kip-Ft)	Shear (Kips)	Axial (Kips)
Original Design Reactions	4750.0	37.5	38.0
Analysis Reactions	3095.0	26.3	37.3
% of Design Reactions	65.2%	70.1%	98.2%

No foundation drawing is available for the analysis of the existing foundation. Since the reactions calculated from the current analysis are less than those indicated on the original structural design drawing, the foundation is assumed to be adequate to resist the reactions from the current analysis if it was properly designed and constructed.

Operational Condition (Rigidity):

Operational characteristics of the tower are found to be within the limits prescribed by ANSI/TIA-222-F for the installed antennas. Maximum twist/sway at the elevation of the proposed equipment is 1.4582 degrees under the operational wind speed as specified in the Analysis Criteria.

Conclusions

Based on the analysis results, the existing structure and its foundation were found to be adequate to safely support the existing and proposed equipment and meet the minimum requirements per the ANSI/TIA-222-F standards, the 2003 IBC and the 2005 Connecticut State Building Code under the design basic wind speed specified in the Analysis Criteria.

Standard Conditions

1. This analysis was performed based on the information supplied to **(TES) Tower Engineering Solutions, LLC**. Verification of the information provided was not included in the Scope of Work for **TES**. The accuracy of the analysis is dependent on the accuracy of the information provided.
2. The analysis is based on the presumption that the tower members and components along with any existing reinforcement items have been correctly and properly designed, manufactured, installed and maintained.
3. All the existing structural members were assumed to be in good condition with no physical damage or deterioration associated with corrosion.
4. An initial tension of 10% of the break strength on all the existing guy wires was assumed in all the structural analyses of guyed towers unless different values were provided by the client. **TES** cannot take responsibility for the deviations in the analysis results because of differences in the initial tension forces of the existing guy wires.
5. Secondary component or connection secondary components, welds and bolts are assumed to be able to carry their intended original design loads. **TES** cannot take responsibility for verification of the adequacy on the connections, bolts and welds present in the structure.
6. The analyses will be performed based on the codes as specified by the client or based on the best knowledge of the engineering staff of **TES**. In the absence of information to the contrary, all work will be performed in accordance with the latest relevant revision of ANSI/TIA-222. If wind speed or/and ice loads are different from the minimum values recommended by the EIA/TIA-222 standard or other codes, **TES** should be notified in writing and the applicable minimum values provided by the client.
7. The configuration of the existing mounts, antennas, coax and other appurtenances were supplied by the customer for the current structural analysis. **TES** has not visited the tower site to verify the adequacy of the information provided. If there is any discrepancy found in the report regarding the existing conditions, **TES** should be notified immediately to evaluate the effect of the discrepancy on the analysis results.
8. The client will assume responsibility for rework associated with the differences in initially provided information, including tower and foundation information, existing and/or proposed equipment and transmission lines.
9. If a feasibility analysis was performed, final acceptance of changed conditions shall be based upon a rigorous structural analysis.

Usage Diagram - Max Stress 63.6% at 49.0ft

Structure: CT02217-S-SBA
Site Name: Pomfret School
Height: 168.00 (ft)
Base Elev: 0.000 (ft)

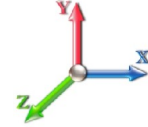
Code: EIA/TIA-222-F
Exposure: C
Gh: 1.69

10/15/2015
 Page: 1



Dead Load Factor: 1.00
Wind Load Factor: 1.00

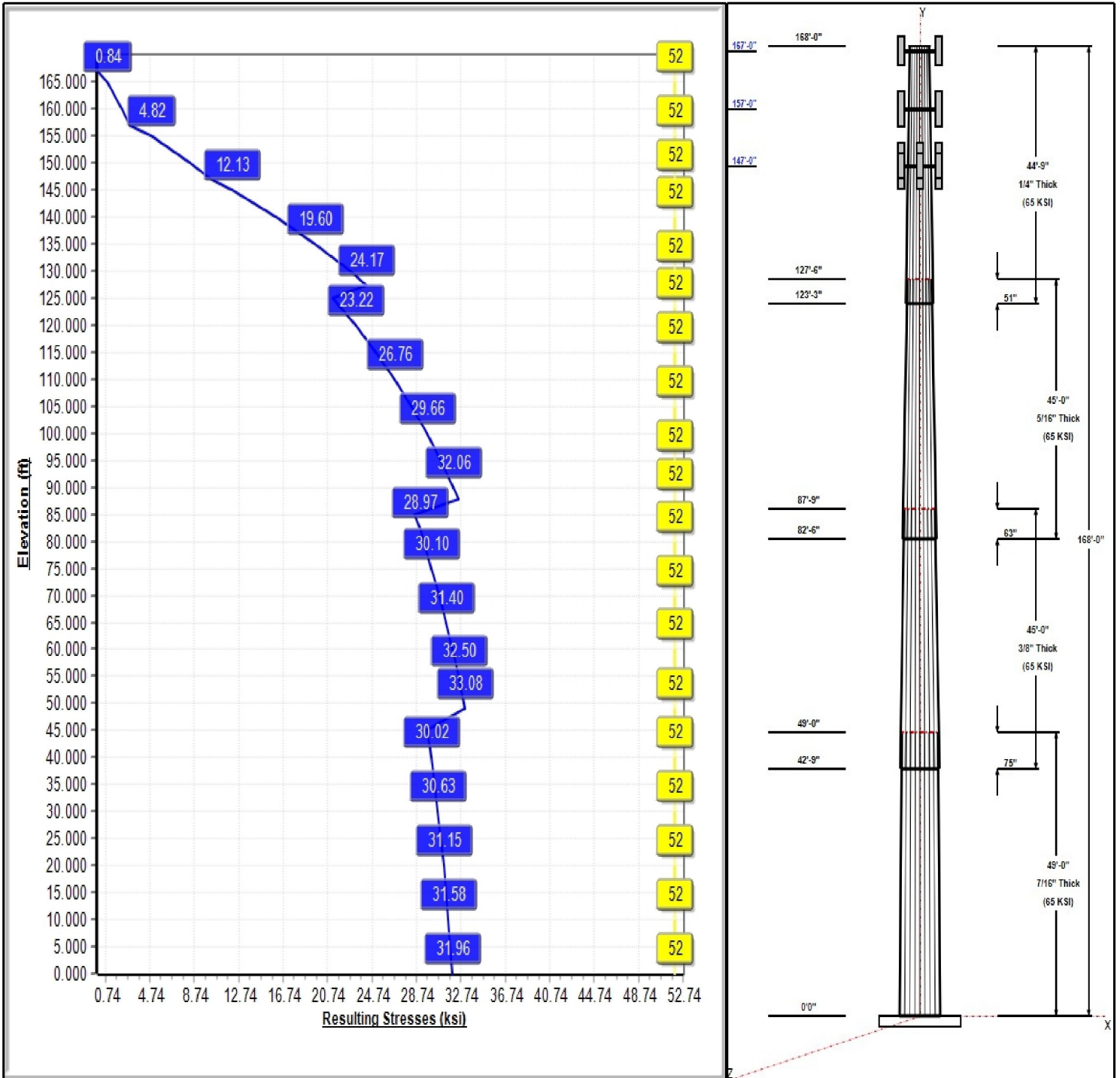
Load Case : 85 mph Wind with 0 in Ice



Iterations: 24

52 Allowable Stress
33 Resulting Stress

Copyright © 2015 by Tower Engineering Solutions, LLC. All rights reserved.



Structure: CT02217-S-SBA

Type: Tapered
Site Name: Pomfret School
Height: 168.00 (ft)
Base Elev: 0.00 (ft)

Base Shape: 18 Sided
Taper: 0.22003

10/15/2015



Page: 2

Shaft Properties

Seq	Length (ft)	Top (in)	Bottom (in)	Thick (in)	Joint Type	Taper	Grade (ksi)
1	49.00	48.31	59.09	0.438		0.22003	65
2	45.00	40.53	50.43	0.375	Slip	0.22003	65
3	45.00	32.41	42.31	0.313	Slip	0.22003	65
4	44.75	24.00	33.85	0.250	Slip	0.22003	65

Discrete Appurtenances

Attach Elev (ft)	Force Elev (ft)	Qty	Description	Carrier
168.00	170.50	1	Lightning Rod	---
167.00	167.00	6	Decibel DB908H90E-M w/	Sprint
167.00	167.00	1	Low Profile Platform	Sprint
157.00	157.00	3	ALU RRH 2x40-700U	Verizon
157.00	157.00	3	ALU RRH 2x60-AWS	Verizon
157.00	157.00	6	Commscope	Verizon
157.00	157.00	6	Commscope	Verizon
157.00	157.00	1	Low Profile Platform	Verizon
157.00	157.00	1	RFS DB-T1-6Z-8AB-0Z	Verizon
147.00	147.00	3	Allen Telecom	T-Mobile
147.00	147.00	3	Commscope	T-Mobile
147.00	147.00	3	Ericsson KRY 112 144/1	T-Mobile
147.00	147.00	3	Kathrein 782 11056	T-Mobile
147.00	147.00	1	Low Profile Platform w/	T-Mobile
147.00	147.00	3	RFS	T-Mobile

Linear Appurtenances

Elev From (ft)	Elev To (ft)	Placement	Description	Carrier
3.00	167.00	Inside	1 5/8" Coax	Sprint
3.00	157.00	Inside	1 5/8" Coax	Verizon
3.00	157.00	Inside	1 5/8" Hybriflex	Verizon
3.00	147.00	Inside	1 5/8" Coax	T-Mobile

Anchor Bolts

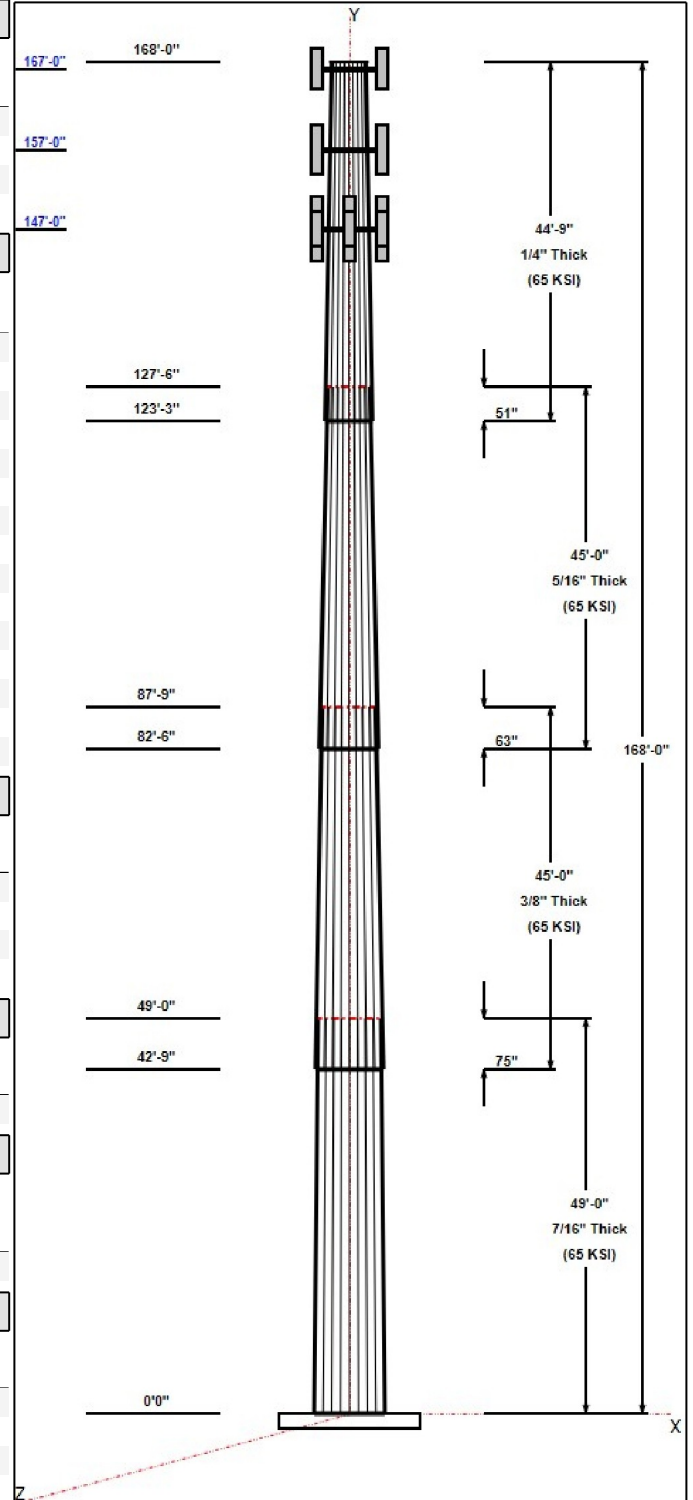
Qty	Specifications	Grade (ksi)	Arrangement
20	2.25" 18J	75.0	Cluster

Base Plate

Thickness (in)	Specifications (in)	Grade (ksi)	Geometry
3.0000	65.0	50.0	Clipped

Reactions

Load Case	Moment	Shear	Axial
85 mph Wind with 0" Ice	3095.0	26.3	37.3
73.61 mph Wind with 0.5" Ice	2476.4	20.7	42.7
50 mph Wind with 0" Ice	1071.8	9.1	37.4



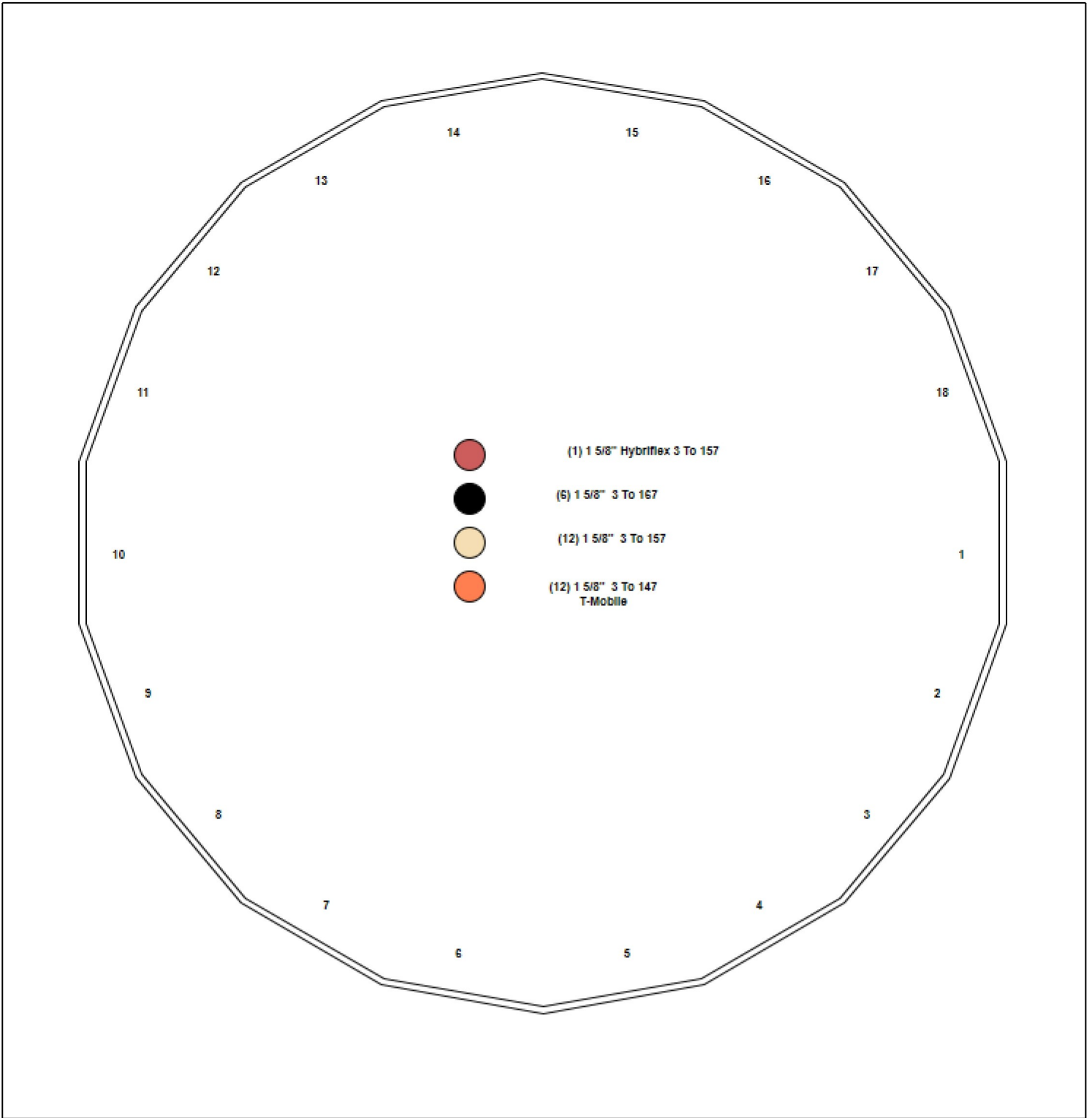
Structure: CT02217-S-SBA - Coax Line Placement

Type: Monopole
Site Name: Pomfret School
Height: 168.00 (ft)

10/15/2015



Page: 3



Shaft Properties

Structure: CT02217-S-SBA	Code: EIA/TIA-222-F	10/15/2015
Site Name: Pomfret School	Exposure: C	
Height: 168.00 (ft)	Gh: 1.69	
Base Elev: 0.000 (ft)	Struct Class: II	Page: 4



Sec. No.	Shape	Length (ft)	Thick (in)	Fy (ksi)	Joint Type	Overlap (in)	Weight (lb)
1	18	49.000	0.4375	65		0.00	12,331
2	18	45.000	0.3750	65	Slip	75.00	8,221
3	18	45.000	0.3125	65	Slip	63.00	5,627
4	18	44.750	0.2500	65	Slip	51.00	3,464
Total Shaft Weight:							29,644

Bottom

Top

Sec. No.	Dia (in)	Elev (ft)	Area (sqin)	Ix (in^4)	W/t Ratio	D/t Ratio	Dia (in)	Elev (ft)	Area (sqin)	Ix (in^4)	W/t Ratio	D/t Ratio	Taper
1	59.09	0.00	81.44	35398.27	22.40	135.0	48.31	49.00	66.47	19246.0	18.05	110.4	0.220030
2	50.43	42.75	59.58	18863.19	22.30	134.4	40.53	87.75	47.80	9738.05	17.64	108.0	0.220030
3	42.31	82.50	41.66	9284.18	22.46	135.4	32.41	127.5	31.84	4144.35	16.87	103.7	0.220030
4	33.85	123.2	26.66	3801.54	22.46	135.3	24.00	168.0	18.84	1343.00	15.51	96	0.220030

Loading Summary

Structure: CT02217-S-SBA
Site Name: Pomfret School
Height: 168.00 (ft)
Base Elev: 0.000 (ft)

Code: EIA/TIA-222-F
Exposure: C
Gh: 1.69
Struct Class: II

10/15/2015
 Page: 5



Discrete Appurtenances

No.	Elev (ft)	Description	Qty	No Ice			Ice			Hor. Ecc. (ft)	Vert Ecc (ft)
				Weight (lb)	CaAa (sf)	CaAa Factor	Weight (lb)	CaAa (sf)	CaAa Factor		
1	168.0	Lightning Rod	1	35.00	1.05	1.00	44.00	1.730	1.00	0.00	2.50
2	167.0	Decibel DB908H90E-M w/ Mount	6	42.00	5.70	0.74	0.00	4.470	0.74	0.00	0.00
3	167.0	Low Profile Platform	1	1500.00	22.00	1.00	1800.00	27.00	1.00	0.00	0.00
4	157.0	ALU RRH 2x40-700U	3	50.70	2.23	0.67	67.50	2.540	0.67	0.00	0.00
5	157.0	ALU RRH 2x60-AWS	3	60.00	3.96	0.67	80.10	4.230	0.67	0.00	0.00
6	157.0	Commscope HBXX-6517DS-VTM	6	40.70	8.73	0.77	91.90	9.590	0.77	0.00	0.00
7	157.0	Commscope LNX-6514DS-VTM	6	38.80	8.41	0.83	89.30	9.240	0.83	0.00	0.00
8	157.0	Low Profile Platform	1	1500.00	22.00	1.00	1800.00	27.00	1.00	0.00	0.00
9	157.0	RFS DB-T1-6Z-8AB-OZ	1	18.90	5.60	0.67	46.00	5.870	0.67	0.00	0.00
10	147.0	Allen Telecom FE15501P77/75	3	17.50	0.54	0.67	17.10	0.710	0.67	0.00	0.00
11	147.0	Commscope LNX-6515DS-VTM	3	50.30	11.45	0.82	115.70	12.38	0.82	0.00	0.00
12	147.0	Ericsson KRY 112 144/1	3	11.00	0.41	0.67	14.10	0.550	0.67	0.00	0.00
13	147.0	Kathrein 782 11056	3	1.80	0.28	0.67	4.50	0.390	0.67	0.00	0.00
14	147.0	Low Profile Platform w/ Reinf. Kit	1	1800.00	30.00	1.00	1500.00	31.00	1.00	0.00	0.00
15	147.0	RFS APXV18-206516S-C-A20	3	18.70	3.62	0.73	38.70	4.150	0.73	0.00	0.00
Totals:			44	6,212.90			7,290.30				

Linear Appurtenances

Bottom Elev. (ft)	Top Elev. (ft)	Description	No Ice		Ice		Exposed
			Weight (lb/ft)	CaAa (sf/ft)	Weight (lb/ft)	CaAa (sf/ft)	
3.00	167.0	(6) 1 5/8" Coax	1.04	0.00	0.00	0.00	Inside
3.00	157.0	(12) 1 5/8" Coax	1.04	0.00	0.00	0.00	Inside
3.00	157.0	(1) 1 5/8" Hybriflex	6.60	0.00	0.00	0.00	Inside
3.00	147.0	(12) 1 5/8" Coax	1.04	0.00	0.00	0.00	Inside
Totals:			1,496.88		0.00		

Shaft Section Properties

Structure: CT02217-S-SBA
Site Name: Pomfret School
Height: 168.00 (ft)
Base Elev: 0.000 (ft)

Code: EIA/TIA-222-F
Exposure: C
Gh: 1.69
Struct Class: II

10/15/2015
 Page: 6



Increment Length: 5 (ft)

Elev (ft)	Description	Thick (in)	Dia (in)	Area (in^2)	Ix (in^4)	W/t Ratio	D/t Ratio	Fy (ksi)	Fb (ksi)	Weight (lb)
0.00		0.4375	59.090	81.443	35398.3	22.40	135.06	65	52	0.0
5.00		0.4375	57.990	79.916	33443.5	21.96	132.55	65	52	1372.7
10.00		0.4375	56.890	78.388	31562.0	21.52	130.03	65	52	1346.7
15.00		0.4375	55.790	76.860	29752.5	21.07	127.52	65	52	1320.7
20.00		0.4375	54.689	75.333	28013.5	20.63	125.00	65	52	1294.7
25.00		0.4375	53.589	73.805	26343.6	20.19	122.49	65	52	1268.7
30.00		0.4375	52.489	72.278	24741.4	19.74	119.98	65	52	1242.7
35.00		0.4375	51.389	70.750	23205.6	19.30	117.46	65	52	1216.7
40.00		0.4375	50.289	69.222	21734.6	18.86	114.95	65	52	1190.7
42.75	Bot - Section 2	0.4375	49.684	68.382	20952.8	18.61	113.56	65	52	643.8
45.00		0.4375	49.189	67.695	20327.2	18.41	112.43	65	52	974.8
49.00	Top - Section 1	0.3750	49.059	57.943	17350.9	21.66	130.82	65	52	1708.9
50.00		0.3750	48.839	57.682	17116.7	21.55	130.24	65	52	196.7
55.00		0.3750	47.738	56.372	15977.3	21.04	127.30	65	52	970.2
60.00		0.3750	46.638	55.063	14889.6	20.52	124.37	65	52	948.0
65.00		0.3750	45.538	53.753	13852.4	20.00	121.43	65	52	925.7
70.00		0.3750	44.438	52.444	12864.6	19.48	118.50	65	52	903.4
75.00		0.3750	43.338	51.135	11924.8	18.97	115.57	65	52	881.1
80.00		0.3750	42.238	49.825	11032.0	18.45	112.63	65	52	858.9
82.50	Bot - Section 3	0.3750	41.688	49.170	10602.8	18.19	111.17	65	52	421.1
85.00		0.3750	41.137	48.516	10184.9	17.93	109.70	65	52	767.6
87.75	Top - Section 2	0.3125	41.157	40.512	8539.0	21.81	131.70	65	52	832.5
90.00		0.3125	40.662	40.021	8232.3	21.53	130.12	65	52	308.3
95.00		0.3125	39.562	38.929	7577.1	20.91	126.60	65	52	671.6
100.00		0.3125	38.462	37.838	6957.6	20.29	123.08	65	52	653.1
105.00		0.3125	37.362	36.747	6372.9	19.67	119.56	65	52	634.5
110.00		0.3125	36.262	35.656	5821.9	19.05	116.04	65	52	615.9
115.00		0.3125	35.162	34.565	5303.6	18.43	112.52	65	52	597.4
120.00		0.3125	34.061	33.474	4817.0	17.81	109.00	65	52	578.8
123.25	Bot - Section 4	0.3125	33.346	32.764	4517.2	17.40	106.71	65	52	366.3
125.00		0.3125	32.961	32.382	4361.1	17.19	105.48	65	52	351.8
127.50	Top - Section 3	0.2500	32.911	25.916	3492.9	21.80	131.64	65	52	495.5
130.00		0.2500	32.361	25.479	3319.3	21.41	129.44	65	52	218.6
135.00		0.2500	31.261	24.606	2989.7	20.64	125.04	65	52	426.1
140.00		0.2500	30.161	23.733	2682.7	19.86	120.64	65	52	411.2
145.00		0.2500	29.061	22.860	2397.4	19.09	116.24	65	52	396.4
147.00		0.2500	28.621	22.511	2289.2	18.78	114.48	65	52	154.4
150.00		0.2500	27.961	21.988	2133.1	18.31	111.84	65	52	227.1
155.00		0.2500	26.860	21.115	1889.0	17.53	107.44	65	52	366.7
157.00		0.2500	26.420	20.765	1796.9	17.22	105.68	65	52	142.5
160.00		0.2500	25.760	20.242	1664.3	16.76	103.04	65	52	209.3
165.00		0.2500	24.660	19.369	1458.1	15.98	98.64	65	52	337.0
167.00		0.2500	24.220	19.020	1380.7	15.67	96.88	65	52	130.6
168.00		0.2500	24.000	18.845	1343.0	15.52	96.00	65	52	64.4

29643.8

Wind Loading - Shaft

Structure: CT02217-S-SBA
Site Name: Pomfret School
Height: 168.00 (ft)
Base Elev: 0.000 (ft)

Code: EIA/TIA-222-F
Exposure: C
Gh: 1.69
Struct Class: II

10/15/2015
 Page: 7



Load Case: 85 mph Wind with 0" Ice

Dead Load Factor 1.00
Wind Load Factor 1.00



Iterations: 24

Elev (ft)	Description	Kzt	Kz	qz (psf)	qzGh (psf)	C (mph-ft)	Cf	Ice Thick (in)	Tributary (ft)	Aa (sf)	CfAa (sf)	Wind Force X (lb)	Dead Load Ice (lb)	Tot Dead Load (lb)
0.00		0.00	1.00	18.496	31.26	418.55	0.650	0.000	0.00	0.000	0.00	0.0	0.0	0.0
5.00		0.00	1.00	18.496	31.26	410.76	0.650	0.000	5.00	24.392	15.85	495.6	0.0	1372.7
10.00		0.00	1.00	18.496	31.26	402.97	0.650	0.000	5.00	23.933	15.56	486.3	0.0	1346.7
15.00		0.00	1.00	18.496	31.26	395.18	0.650	0.000	5.00	23.475	15.26	477.0	0.0	1320.7
20.00		0.00	1.00	18.496	31.26	387.38	0.650	0.000	5.00	23.016	14.96	467.6	0.0	1294.7
25.00		0.00	1.00	18.496	31.26	379.59	0.650	0.000	5.00	22.558	14.66	458.3	0.0	1268.7
30.00		0.00	1.00	18.496	31.26	371.80	0.650	0.000	5.00	22.100	14.36	449.0	0.0	1242.7
35.00		0.00	1.02	18.810	31.79	367.08	0.650	0.000	5.00	21.641	14.07	447.2	0.0	1216.7
40.00		0.00	1.06	19.541	33.02	366.14	0.650	0.000	5.00	21.183	13.77	454.7	0.0	1190.7
42.75	Bot - Section 2	0.00	1.08	19.916	33.66	365.18	0.650	0.000	2.75	11.455	7.45	250.6	0.0	643.8
45.00		0.00	1.09	20.210	34.15	364.20	0.650	0.000	2.25	9.410	6.12	208.9	0.0	974.8
49.00	Top - Section 1	0.00	1.12	20.708	35.00	362.07	0.650	0.000	4.00	16.500	10.72	375.3	0.0	1708.9
50.00		0.00	1.13	20.827	35.20	367.10	0.650	0.000	1.00	4.079	2.65	93.3	0.0	196.7
55.00		0.00	1.16	21.402	36.17	363.75	0.650	0.000	5.00	20.120	13.08	473.0	0.0	970.2
60.00		0.00	1.19	21.941	37.08	359.81	0.650	0.000	5.00	19.662	12.78	473.9	0.0	948.0
65.00		0.00	1.21	22.449	37.94	355.36	0.650	0.000	5.00	19.203	12.48	473.6	0.0	925.7
70.00		0.00	1.24	22.929	38.75	350.47	0.650	0.000	5.00	18.745	12.18	472.1	0.0	903.4
75.00		0.00	1.26	23.386	39.52	345.18	0.650	0.000	5.00	18.287	11.89	469.8	0.0	881.1
80.00		0.00	1.29	23.821	40.26	339.53	0.650	0.000	5.00	17.828	11.59	466.5	0.0	858.9
82.50	Bot - Section 3	0.00	1.30	24.031	40.61	336.58	0.650	0.000	2.50	8.742	5.68	230.8	0.0	421.1
85.00		0.00	1.31	24.237	40.96	333.56	0.650	0.000	2.50	8.758	5.69	233.2	0.0	767.6
87.75	Top - Section 2	0.00	1.32	24.459	41.33	330.15	0.650	0.000	2.75	9.501	6.18	255.3	0.0	832.5
90.00		0.00	1.33	24.636	41.63	332.41	0.650	0.000	2.25	7.671	4.99	207.6	0.0	308.3
95.00		0.00	1.35	25.020	42.28	325.93	0.650	0.000	5.00	16.713	10.86	459.4	0.0	671.6
100.00		0.00	1.37	25.389	42.91	319.19	0.650	0.000	5.00	16.255	10.57	453.3	0.0	653.1
105.00		0.00	1.39	25.745	43.51	312.23	0.650	0.000	5.00	15.797	10.27	446.7	0.0	634.5
110.00		0.00	1.41	26.090	44.09	305.06	0.650	0.000	5.00	15.338	9.97	439.6	0.0	615.9
115.00		0.00	1.43	26.423	44.66	297.69	0.650	0.000	5.00	14.880	9.67	431.9	0.0	597.4
120.00		0.00	1.45	26.747	45.20	290.13	0.650	0.000	5.00	14.421	9.37	423.7	0.0	578.8
123.25	Bot - Section 4	0.00	1.46	26.952	45.55	285.13	0.650	0.000	3.25	9.128	5.93	270.3	0.0	366.3
125.00		0.00	1.46	27.060	45.73	282.40	0.650	0.000	1.75	4.908	3.19	145.9	0.0	351.8
127.50	Top - Section 3	0.00	1.47	27.214	45.99	278.48	0.650	0.000	2.50	6.914	4.49	206.7	0.0	495.5
130.00		0.00	1.48	27.365	46.25	278.82	0.650	0.000	2.50	6.799	4.42	204.4	0.0	218.6
135.00		0.00	1.50	27.662	46.75	270.80	0.650	0.000	5.00	13.255	8.62	402.8	0.0	426.1
140.00		0.00	1.51	27.951	47.24	262.63	0.650	0.000	5.00	12.796	8.32	392.9	0.0	411.2
145.00		0.00	1.53	28.233	47.71	254.32	0.650	0.000	5.00	12.338	8.02	382.6	0.0	396.4
147.00	Appurtenance(s)	0.00	1.53	28.343	47.90	250.96	0.650	0.000	2.00	4.807	3.12	149.7	0.0	154.4
150.00		0.00	1.54	28.507	48.18	245.88	0.650	0.000	3.00	7.073	4.60	221.5	0.0	227.1
155.00		0.00	1.56	28.776	48.63	237.31	0.650	0.000	5.00	11.421	7.42	361.0	0.0	366.7
157.00	Appurtenance(s)	0.00	1.56	28.881	48.81	233.85	0.650	0.000	2.00	4.440	2.89	140.9	0.0	142.5
160.00		0.00	1.57	29.038	49.07	228.63	0.650	0.000	3.00	6.523	4.24	208.1	0.0	209.3
165.00		0.00	1.58	29.294	49.51	219.83	0.650	0.000	5.00	10.504	6.83	338.0	0.0	337.0
167.00	Appurtenance(s)	0.00	1.59	29.395	49.68	216.28	0.650	0.000	2.00	4.073	2.65	131.5	0.0	130.6
168.00	Appurtenance(s)	0.00	1.59	29.446	49.76	214.50	0.650	0.000	1.00	2.009	1.31	65.0	0.0	64.4
Totals:									168.00			14,695.4		29,643.8

Discrete Appurtenance Forces

Structure: CT02217-S-SB
Site Name: Pomfret School
Height: 168.00 (ft)
Base Elev: 0.000 (ft)

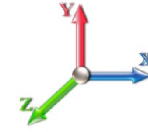
Code: EIA/TIA-222-F
Exposure: C
Gh: 1.69
Struct Class: II

10/15/2015
 Page: 8



Load Case: 85 mph Wind with 0" Ice

Dead Load Factor 1.00
Wind Load Factor 1.00



Iterations: 24

No.	Elev (ft)	Description	Qty	qz (psf)	qzGh (psf)	CaAa Factor	Total CaAa (sf)	Dead Load (lb)	Horiz Ecc (ft)	Vert Ecc (ft)	Wind FX (lb)	Mom Y (lb-ft)	Mom Z (lb-ft)
1	168.00	Lightning Rod	1	29.570	49.973	1.00	1.05	35.00	0.000	2.500	52.47	0.00	131.18
2	167.00	Low Profile Platform	1	29.395	49.678	1.00	22.00	1500.00	0.000	0.000	1092.92	0.00	0.00
3	167.00	Decibel DB908H90E-M w/	6	29.395	49.678	0.74	25.31	252.00	0.000	0.000	1257.25	0.00	0.00
4	157.00	RFS DB-T1-6Z-8AB-0Z	1	28.881	48.809	0.67	3.75	18.90	0.000	0.000	183.13	0.00	0.00
5	157.00	Low Profile Platform	1	28.881	48.809	1.00	22.00	1500.00	0.000	0.000	1073.81	0.00	0.00
6	157.00	Commscope	6	28.881	48.809	0.83	41.88	232.80	0.000	0.000	2044.22	0.00	0.00
7	157.00	Commscope	6	28.881	48.809	0.77	40.33	244.20	0.000	0.000	1968.61	0.00	0.00
8	157.00	ALU RRH 2x60-AWS	3	28.881	48.809	0.67	7.96	180.00	0.000	0.000	388.50	0.00	0.00
9	157.00	ALU RRH 2x40-700U	3	28.881	48.809	0.67	4.48	152.10	0.000	0.000	218.78	0.00	0.00
10	147.00	RFS	3	28.343	47.900	0.73	7.93	56.10	0.000	0.000	379.74	0.00	0.00
11	147.00	Low Profile Platform w/ Reinf.	1	28.343	47.900	1.00	30.00	1800.00	0.000	0.000	1437.00	0.00	0.00
12	147.00	Kathrein 782 11056	3	28.343	47.900	0.67	0.56	5.40	0.000	0.000	26.96	0.00	0.00
13	147.00	Ericsson KRY 112 144/1	3	28.343	47.900	0.67	0.82	33.00	0.000	0.000	39.47	0.00	0.00
14	147.00	Commscope	3	28.343	47.900	0.82	28.17	150.90	0.000	0.000	1349.20	0.00	0.00
15	147.00	Allen Telecom	3	28.343	47.900	0.67	1.09	52.50	0.000	0.000	51.99	0.00	0.00
Totals:								6,212.90			11,564.07		

Total Applied Force Summary

Structure: CT02217-S-SB
Site Name: Pomfret School
Height: 168.00 (ft)
Base Elev: 0.000 (ft)

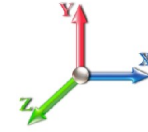
Code: EIA/TIA-222-F
Exposure: C
Gh: 1.69
Struct Class: II

10/15/2015
 Page: 9



Load Case: 85 mph Wind with 0" Ice

Dead Load Factor 1.00
Wind Load Factor 1.00



Iterations: 24

Elev (ft)	Description	Lateral FX (-) (lb)	Axial FY (-) (lb)	Torsion MY (lb-ft)	Moment MZ (lb-ft)
0.00		0.00	0.00	0.00	0.00
5.00		495.59	1392.11	0.00	0.00
10.00		486.27	1395.28	0.00	0.00
15.00		476.96	1369.29	0.00	0.00
20.00		467.64	1343.30	0.00	0.00
25.00		458.33	1317.31	0.00	0.00
30.00		449.02	1291.32	0.00	0.00
35.00		447.16	1265.33	0.00	0.00
40.00		454.71	1239.34	0.00	0.00
42.75		250.61	670.56	0.00	0.00
45.00		208.90	996.69	0.00	0.00
49.00		375.32	1747.77	0.00	0.00
50.00		93.32	206.44	0.00	0.00
55.00		473.04	1018.85	0.00	0.00
60.00		473.90	996.57	0.00	0.00
65.00		473.55	974.29	0.00	0.00
70.00		472.14	952.02	0.00	0.00
75.00		469.77	929.74	0.00	0.00
80.00		466.51	907.46	0.00	0.00
82.50		230.78	445.38	0.00	0.00
85.00		233.17	791.86	0.00	0.00
87.75		255.28	859.25	0.00	0.00
90.00		207.59	330.16	0.00	0.00
95.00		459.35	720.22	0.00	0.00
100.00		453.35	701.66	0.00	0.00
105.00		446.75	683.09	0.00	0.00
110.00		439.59	664.53	0.00	0.00
115.00		431.90	645.96	0.00	0.00
120.00		423.72	627.40	0.00	0.00
123.25		270.25	397.85	0.00	0.00
125.00		145.89	368.81	0.00	0.00
127.50		206.68	519.77	0.00	0.00
130.00		204.39	242.91	0.00	0.00
135.00		402.76	474.68	0.00	0.00
140.00		392.90	459.82	0.00	0.00
145.00		382.64	444.97	0.00	0.00
147.00	(16) appurtenances	3434.03	2271.73	0.00	0.00
150.00		221.48	253.17	0.00	0.00
155.00		361.02	410.07	0.00	0.00
157.00	(20) appurtenances	6017.92	2487.87	0.00	0.00
160.00		208.06	212.43	0.00	0.00
165.00		338.02	342.16	0.00	0.00
167.00	(7) appurtenances	2481.70	1884.71	0.00	0.00
168.00	(1) appurtenances	117.46	99.42	0.00	131.18
Totals:		26,259.44	37,353.54	0.00	131.18

Resulting Forces and Deflections

Structure: CT02217-S-SB
Site Name: Pomfret School
Height: 168.00 (ft)
Base Elev: 0.000 (ft)

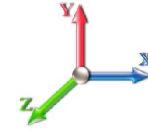
Code: EIA/TIA-222-F
Exposure: C
Gh: 1.69
Struct Class: II

10/15/2015
 Page: 10



Load Case: 85 mph Wind with 0" Ice

Dead Load Factor 1.00
Wind Load Factor 1.00



Iterations: 24

Elev (ft)	Lateral FX (-) (kips)	Axial FY (-) (kips)	Lateral FZ (kips)	Moment MX (ft-kips)	Torsion MY (ft-kips)	Moment MZ (ft-kips)	Deflect X (in)	Deflect Z (in)	Deflect Resultant (in)	Rotation Sway (deg)	Rotation Twist (deg)
0.00	-26.299	-37.325	0.000	0.000	0.000	-3095.0	0.000	0.000	0.000	0.000	0.000
5.00	-25.878	-35.878	0.000	0.000	0.000	-2963.5	-0.066	0.000	0.066	-0.122	0.000
10.00	-25.462	-34.429	0.000	0.000	0.000	-2834.1	-0.259	0.000	0.259	-0.245	0.000
15.00	-25.050	-33.008	0.000	0.000	0.000	-2706.8	-0.583	0.000	0.583	-0.370	0.000
20.00	-24.643	-31.613	0.000	0.000	0.000	-2581.6	-1.039	0.000	1.039	-0.496	0.000
25.00	-24.240	-30.246	0.000	0.000	0.000	-2458.3	-1.627	0.000	1.627	-0.624	0.000
30.00	-23.841	-28.906	0.000	0.000	0.000	-2337.1	-2.351	0.000	2.351	-0.754	0.000
35.00	-23.439	-27.594	0.000	0.000	0.000	-2217.9	-3.211	0.000	3.211	-0.885	0.000
40.00	-23.011	-26.321	0.000	0.000	0.000	-2100.8	-4.208	0.000	4.208	-1.017	0.000
42.75	-22.779	-25.628	0.000	0.000	0.000	-2037.5	-4.816	0.000	4.816	-1.092	0.000
45.00	-22.587	-24.602	0.000	0.000	0.000	-1986.2	-5.346	0.000	5.346	-1.153	0.000
49.00	-22.202	-22.836	0.000	0.000	0.000	-1895.9	-6.359	0.000	6.359	-1.262	0.000
50.00	-22.140	-22.597	0.000	0.000	0.000	-1873.7	-6.626	0.000	6.626	-1.290	0.000
55.00	-21.700	-21.532	0.000	0.000	0.000	-1763.0	-8.058	0.000	8.058	-1.441	0.000
60.00	-21.254	-20.492	0.000	0.000	0.000	-1654.5	-9.649	0.000	9.649	-1.593	0.000
65.00	-20.805	-19.476	0.000	0.000	0.000	-1548.2	-11.399	0.000	11.399	-1.746	0.000
70.00	-20.352	-18.485	0.000	0.000	0.000	-1444.2	-13.310	0.000	13.310	-1.899	0.000
75.00	-19.898	-17.519	0.000	0.000	0.000	-1342.4	-15.382	0.000	15.382	-2.054	0.000
80.00	-19.431	-16.590	0.000	0.000	0.000	-1242.9	-17.615	0.000	17.615	-2.208	0.000
82.50	-19.205	-16.128	0.000	0.000	0.000	-1194.4	-18.792	0.000	18.792	-2.286	0.000
85.00	-18.962	-15.319	0.000	0.000	0.000	-1146.4	-20.011	0.000	20.011	-2.365	0.000
87.75	-18.691	-14.446	0.000	0.000	0.000	-1094.2	-21.398	0.000	21.398	-2.451	0.000
90.00	-18.500	-14.085	0.000	0.000	0.000	-1052.2	-22.570	0.000	22.570	-2.521	0.000
95.00	-18.048	-13.332	0.000	0.000	0.000	-959.70	-25.304	0.000	25.304	-2.695	0.000
100.00	-17.599	-12.601	0.000	0.000	0.000	-869.46	-28.219	0.000	28.219	-2.867	0.000
105.00	-17.152	-11.892	0.000	0.000	0.000	-781.47	-31.311	0.000	31.311	-3.036	0.000
110.00	-16.709	-11.205	0.000	0.000	0.000	-695.71	-34.579	0.000	34.579	-3.201	0.000
115.00	-16.270	-10.540	0.000	0.000	0.000	-612.16	-38.016	0.000	38.016	-3.360	0.000
120.00	-15.831	-9.905	0.000	0.000	0.000	-530.82	-41.617	0.000	41.617	-3.514	0.000
123.25	-15.548	-9.505	0.000	0.000	0.000	-479.37	-44.042	0.000	44.042	-3.611	0.000
125.00	-15.389	-9.130	0.000	0.000	0.000	-452.16	-45.374	0.000	45.374	-3.662	0.000
127.50	-15.160	-8.606	0.000	0.000	0.000	-413.69	-47.310	0.000	47.310	-3.733	0.000
130.00	-14.956	-8.349	0.000	0.000	0.000	-375.79	-49.282	0.000	49.282	-3.800	0.000
135.00	-14.541	-7.868	0.000	0.000	0.000	-301.01	-53.340	0.000	53.340	-3.945	0.000
140.00	-14.132	-7.409	0.000	0.000	0.000	-228.30	-57.539	0.000	57.539	-4.071	0.000
145.00	-13.726	-6.977	0.000	0.000	0.000	-157.65	-61.858	0.000	61.858	-4.174	0.000
147.00	-10.138	-4.955	0.000	0.000	0.000	-130.19	-63.613	0.000	63.613	-4.208	0.000
150.00	-9.903	-4.711	0.000	0.000	0.000	-99.784	-66.270	0.000	66.270	-4.251	0.000
155.00	-9.515	-4.324	0.000	0.000	0.000	-50.271	-70.748	0.000	70.748	-4.301	0.000
157.00	-3.327	-2.295	0.000	0.000	0.000	-31.242	-72.551	0.000	72.551	-4.313	0.000
160.00	-3.104	-2.098	0.000	0.000	0.000	-21.260	-75.263	0.000	75.263	-4.325	0.000
165.00	-2.742	-1.782	0.000	0.000	0.000	-5.739	-79.796	0.000	79.796	-4.337	0.000
167.00	-0.125	-0.090	0.000	0.000	0.000	-0.256	-81.611	0.000	81.611	-4.338	0.000
168.00	-0.117	0.000	0.000	0.000	0.000	-0.131	0.000	0.000	82.519	-4.338	0.000

Resulting Stresses

Structure: CT02217-S-SBA
Site Name: Pomfret School
Height: 168.00 (ft)
Base Elev: 0.000 (ft)

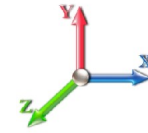
Code: EIA/TIA-222-F
Exposure: C
Gh: 1.69
Struct Class: II

10/15/2015
 Page: 11



Load Case: 85 mph Wind with 0" Ice

Dead Load Factor 1.00
Wind Load Factor 1.00



Iterations: 24

Applied Stresses

Elev (ft)	fa Axial (Y) (ksi)	fvx Shear (X) (ksi)	fvz Shear (Z) (ksi)	fvT Torsion (ksi)	fbx Bending (X) (ksi)	fbz Bending (Z) (ksi)	fb Combined (ksi)	f Allow Stress (ksi)	f/Fb Stress Ratio
0.00	0.46	0.65	0.00	0.00	0.00	31.48	31.96	52.0	0.615
5.00	0.45	0.65	0.00	0.00	0.00	31.31	31.78	52.0	0.611
10.00	0.44	0.65	0.00	0.00	0.00	31.12	31.58	52.0	0.608
15.00	0.43	0.66	0.00	0.00	0.00	30.92	31.37	52.0	0.604
20.00	0.42	0.66	0.00	0.00	0.00	30.71	31.15	52.0	0.599
25.00	0.41	0.66	0.00	0.00	0.00	30.47	30.90	52.0	0.594
30.00	0.40	0.66	0.00	0.00	0.00	30.21	30.63	52.0	0.589
35.00	0.39	0.67	0.00	0.00	0.00	29.93	30.34	52.0	0.584
40.00	0.38	0.67	0.00	0.00	0.00	29.61	30.02	52.0	0.577
42.75	0.37	0.67	0.00	0.00	0.00	29.44	29.83	52.0	0.574
45.00	0.36	0.67	0.00	0.00	0.00	29.28	29.67	52.0	0.571
49.00	0.39	0.77	0.00	0.00	0.00	32.66	33.08	52.0	0.636
50.00	0.39	0.77	0.00	0.00	0.00	32.57	32.99	52.0	0.635
55.00	0.38	0.78	0.00	0.00	0.00	32.09	32.50	52.0	0.625
60.00	0.37	0.78	0.00	0.00	0.00	31.57	31.97	52.0	0.615
65.00	0.36	0.78	0.00	0.00	0.00	31.01	31.40	52.0	0.604
70.00	0.35	0.78	0.00	0.00	0.00	30.39	30.78	52.0	0.592
75.00	0.34	0.78	0.00	0.00	0.00	29.72	30.10	52.0	0.579
80.00	0.33	0.79	0.00	0.00	0.00	28.99	29.36	52.0	0.565
82.50	0.33	0.79	0.00	0.00	0.00	28.61	28.97	52.0	0.557
85.00	0.32	0.79	0.00	0.00	0.00	28.21	28.56	52.0	0.549
87.75	0.36	0.93	0.00	0.00	0.00	32.13	32.53	52.0	0.626
90.00	0.35	0.93	0.00	0.00	0.00	31.66	32.06	52.0	0.617
95.00	0.34	0.93	0.00	0.00	0.00	30.53	30.91	52.0	0.595
100.00	0.33	0.94	0.00	0.00	0.00	29.28	29.66	52.0	0.571
105.00	0.32	0.94	0.00	0.00	0.00	27.91	28.28	52.0	0.544
110.00	0.31	0.94	0.00	0.00	0.00	26.40	26.76	52.0	0.515
115.00	0.30	0.95	0.00	0.00	0.00	24.73	25.09	52.0	0.483
120.00	0.30	0.95	0.00	0.00	0.00	22.87	23.22	52.0	0.447
123.25	0.29	0.96	0.00	0.00	0.00	21.56	21.91	52.0	0.422
125.00	0.28	0.96	0.00	0.00	0.00	20.82	21.17	52.0	0.407
127.50	0.33	1.18	0.00	0.00	0.00	23.75	24.17	52.0	0.465
130.00	0.33	1.18	0.00	0.00	0.00	22.32	22.74	52.0	0.437
135.00	0.32	1.19	0.00	0.00	0.00	19.18	19.60	52.0	0.377
140.00	0.31	1.20	0.00	0.00	0.00	15.64	16.09	52.0	0.309
145.00	0.31	1.21	0.00	0.00	0.00	11.64	12.13	52.0	0.233
147.00	0.22	0.91	0.00	0.00	0.00	9.92	10.26	52.0	0.197
150.00	0.21	0.91	0.00	0.00	0.00	7.97	8.33	52.0	0.160
155.00	0.20	0.91	0.00	0.00	0.00	4.35	4.82	52.0	0.093
157.00	0.11	0.32	0.00	0.00	0.00	2.80	2.96	52.0	0.057
160.00	0.10	0.31	0.00	0.00	0.00	2.00	2.18	52.0	0.042
165.00	0.09	0.29	0.00	0.00	0.00	0.59	0.84	52.0	0.016
167.00	0.00	0.01	0.00	0.00	0.00	0.03	0.04	52.0	0.001
168.00	0.00	0.01	0.00	0.00	0.00	0.01	0.03	52.0	0.001

Wind Loading - Shaft

Structure: CT02217-S-SBA
Site Name: Pomfret School
Height: 168.00 (ft)
Base Elev: 0.000 (ft)

Code: EIA/TIA-222-F
Exposure: C
Gh: 1.69
Struct Class: II

10/15/2015
 Page: 12



Load Case: 73.61 mph Wind with 0.5" Ice

Dead Load Factor 1.00
Wind Load Factor 1.00



Iterations: 24

Elev (ft)	Description	Kzt	Kz	qz (psf)	qzGh (psf)	C (mph-ft)	Cf	Ice Thick (in)	Tributary (ft)	Aa (sf)	CfAa (sf)	Wind Force X (lb)	Dead Load Ice (lb)	Tot Dead Load (lb)
0.00		0.00	1.00	13.871	23.44	362.47	0.650	0.500	0.00	0.000	0.00	0.0	0.0	0.0
5.00		0.00	1.00	13.871	23.44	355.72	0.650	0.500	5.00	24.808	16.13	378.0	180.5	1553.2
10.00		0.00	1.00	13.871	23.44	348.97	0.650	0.500	5.00	24.350	15.83	371.0	177.1	1523.8
15.00		0.00	1.00	13.871	23.44	342.22	0.650	0.500	5.00	23.892	15.53	364.0	173.7	1494.4
20.00		0.00	1.00	13.871	23.44	335.47	0.650	0.500	5.00	23.433	15.23	357.1	170.3	1465.0
25.00		0.00	1.00	13.871	23.44	328.73	0.650	0.500	5.00	22.975	14.93	350.1	166.9	1435.6
30.00		0.00	1.00	13.871	23.44	321.98	0.650	0.500	5.00	22.516	14.64	343.1	163.5	1406.2
35.00		0.00	1.02	14.106	23.84	317.89	0.650	0.500	5.00	22.058	14.34	341.8	160.1	1376.8
40.00		0.00	1.06	14.655	24.77	317.08	0.650	0.500	5.00	21.600	14.04	347.7	156.7	1347.5
42.75	Bot - Section 2	0.00	1.08	14.936	25.24	316.25	0.650	0.500	2.75	11.684	7.59	191.7	85.2	729.0
45.00		0.00	1.09	15.156	25.61	315.40	0.650	0.500	2.25	9.597	6.24	159.8	70.0	1044.9
49.00	Top - Section 1	0.00	1.12	15.530	26.25	313.55	0.650	0.500	4.00	16.833	10.94	287.2	122.3	1831.2
50.00		0.00	1.13	15.620	26.40	317.91	0.650	0.500	1.00	4.162	2.71	71.4	30.4	227.2
55.00		0.00	1.16	16.051	27.13	315.00	0.650	0.500	5.00	20.537	13.35	362.1	148.9	1119.1
60.00		0.00	1.19	16.455	27.81	311.59	0.650	0.500	5.00	20.078	13.05	362.9	145.5	1093.4
65.00		0.00	1.21	16.836	28.45	307.74	0.650	0.500	5.00	19.620	12.75	362.9	142.1	1067.8
70.00		0.00	1.24	17.196	29.06	303.50	0.650	0.500	5.00	19.162	12.46	362.0	138.7	1042.1
75.00		0.00	1.26	17.538	29.64	298.92	0.650	0.500	5.00	18.703	12.16	360.3	135.3	1016.4
80.00		0.00	1.29	17.865	30.19	294.03	0.650	0.500	5.00	18.245	11.86	358.0	131.9	990.7
82.50	Bot - Section 3	0.00	1.30	18.022	30.46	291.48	0.650	0.500	2.50	8.951	5.82	177.2	65.1	486.2
85.00		0.00	1.31	18.177	30.72	288.86	0.650	0.500	2.50	8.966	5.83	179.0	65.2	832.8
87.75	Top - Section 2	0.00	1.32	18.343	31.00	285.91	0.650	0.500	2.75	9.730	6.32	196.1	70.7	903.2
90.00		0.00	1.33	18.476	31.22	287.87	0.650	0.500	2.25	7.858	5.11	159.5	57.2	365.4
95.00		0.00	1.35	18.764	31.71	282.25	0.650	0.500	5.00	17.130	11.13	353.1	123.6	795.2
100.00		0.00	1.37	19.041	32.18	276.42	0.650	0.500	5.00	16.672	10.84	348.7	120.2	773.3
105.00		0.00	1.39	19.308	32.63	270.39	0.650	0.500	5.00	16.213	10.54	343.9	116.8	751.3
110.00		0.00	1.41	19.566	33.07	264.18	0.650	0.500	5.00	15.755	10.24	338.6	113.4	729.4
115.00		0.00	1.43	19.816	33.49	257.80	0.650	0.500	5.00	15.297	9.94	333.0	110.0	707.4
120.00		0.00	1.45	20.059	33.90	251.25	0.650	0.500	5.00	14.838	9.64	327.0	106.6	685.4
123.25	Bot - Section 4	0.00	1.46	20.213	34.16	246.92	0.650	0.500	3.25	9.399	6.11	208.7	67.9	434.1
125.00		0.00	1.46	20.294	34.30	244.56	0.650	0.500	1.75	5.054	3.28	112.7	36.7	388.5
127.50	Top - Section 3	0.00	1.47	20.409	34.49	241.16	0.650	0.500	2.50	7.122	4.63	159.7	51.5	547.0
130.00		0.00	1.48	20.523	34.68	241.46	0.650	0.500	2.50	7.008	4.55	158.0	50.7	269.3
135.00		0.00	1.50	20.745	35.06	234.51	0.650	0.500	5.00	13.671	8.89	311.6	98.0	524.1
140.00		0.00	1.51	20.962	35.43	227.44	0.650	0.500	5.00	13.213	8.59	304.2	94.6	505.8
145.00		0.00	1.53	21.173	35.78	220.24	0.650	0.500	5.00	12.754	8.29	296.7	91.2	487.6
147.00	Appurtenance(s)	0.00	1.53	21.256	35.92	217.33	0.650	0.500	2.00	4.973	3.23	116.1	35.9	190.3
150.00		0.00	1.54	21.379	36.13	212.93	0.650	0.500	3.00	7.323	4.76	172.0	52.7	279.8
155.00		0.00	1.56	21.581	36.47	205.51	0.650	0.500	5.00	11.838	7.69	280.6	84.4	451.1
157.00	Appurtenance(s)	0.00	1.56	21.660	36.60	202.52	0.650	0.500	2.00	4.607	2.99	109.6	33.2	175.7
160.00		0.00	1.57	21.777	36.80	197.99	0.650	0.500	3.00	6.773	4.40	162.0	48.6	257.9
165.00		0.00	1.58	21.969	37.13	190.37	0.650	0.500	5.00	10.921	7.10	263.6	77.6	414.6
167.00	Appurtenance(s)	0.00	1.59	22.045	37.26	187.30	0.650	0.500	2.00	4.240	2.76	102.7	30.5	161.1
168.00	Appurtenance(s)	0.00	1.59	22.083	37.32	185.75	0.650	0.500	1.00	2.093	1.36	50.8	15.1	79.5
Totals:									168.00			11,296.0		33,960.5

Discrete Appurtenance Forces

Structure: CT02217-S-SB
Site Name: Pomfret School
Height: 168.00 (ft)
Base Elev: 0.000 (ft)

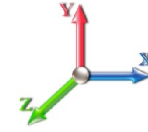
Code: EIA/TIA-222-F
Exposure: C
Gh: 1.69
Struct Class: II

10/15/2015
 Page: 13



Load Case: 73.61 mph Wind with 0.5" Ice

Dead Load Factor 1.00
Wind Load Factor 1.00



Iterations: 24

No.	Elev (ft)	Description	Qty	qz (psf)	qzGh (psf)	CaAa Factor	Total CaAa (sf)	Dead Load (lb)	Horiz Ecc (ft)	Vert Ecc (ft)	Wind FX (lb)	Mom Y (lb-ft)	Mom Z (lb-ft)
1	168.00	Lightning Rod	1	22.176	37.478	1.00	1.73	44.00	0.000	2.500	64.84	0.00	162.09
2	167.00	Low Profile Platform	1	22.045	37.256	1.00	27.00	1800.00	0.000	0.000	1005.92	0.00	0.00
3	167.00	Decibel DB908H90E-M w/	6	22.045	37.256	0.74	19.85	0.00	0.000	0.000	739.42	0.00	0.00
4	157.00	RFS DB-T1-6Z-8AB-0Z	1	21.660	36.605	0.67	3.93	46.00	0.000	0.000	143.96	0.00	0.00
5	157.00	Low Profile Platform	1	21.660	36.605	1.00	27.00	1800.00	0.000	0.000	988.33	0.00	0.00
6	157.00	Commscope	6	21.660	36.605	0.83	46.02	535.80	0.000	0.000	1684.38	0.00	0.00
7	157.00	Commscope	6	21.660	36.605	0.77	44.31	551.40	0.000	0.000	1621.81	0.00	0.00
8	157.00	ALU RRH 2x60-AWS	3	21.660	36.605	0.67	8.50	240.30	0.000	0.000	311.23	0.00	0.00
9	157.00	ALU RRH 2x40-700U	3	21.660	36.605	0.67	5.11	202.50	0.000	0.000	186.88	0.00	0.00
10	147.00	RFS	3	21.256	35.923	0.73	9.09	116.10	0.000	0.000	326.49	0.00	0.00
11	147.00	Low Profile Platform w/ Reinf.	1	21.256	35.923	1.00	31.00	1500.00	0.000	0.000	1113.61	0.00	0.00
12	147.00	Kathrein 782 11056	3	21.256	35.923	0.67	0.78	13.50	0.000	0.000	28.16	0.00	0.00
13	147.00	Ericsson KRY 112 144/1	3	21.256	35.923	0.67	1.11	42.30	0.000	0.000	39.71	0.00	0.00
14	147.00	Commscope	3	21.256	35.923	0.82	30.45	347.10	0.000	0.000	1094.03	0.00	0.00
15	147.00	Allen Telecom	3	21.256	35.923	0.67	1.43	51.30	0.000	0.000	51.27	0.00	0.00
Totals:								7,290.30			9,400.04		

Total Applied Force Summary

Structure: CT02217-S-SB
Site Name: Pomfret School
Height: 168.00 (ft)
Base Elev: 0.000 (ft)

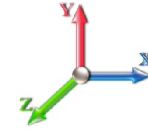
Code: EIA/TIA-222-F
Exposure: C
Gh: 1.69
Struct Class: II

10/15/2015
 Page: 14



Load Case: 73.61 mph Wind with 0.5" Ice

Dead Load Factor 1.00
Wind Load Factor 1.00



Iterations: 24

Elev (ft)	Description	Lateral FX (-) (lb)	Axial FY (-) (lb)	Torsion MY (lb-ft)	Moment MZ (lb-ft)
0.00		0.00	0.00	0.00	0.00
5.00		378.02	1572.60	0.00	0.00
10.00		371.03	1572.37	0.00	0.00
15.00		364.05	1542.99	0.00	0.00
20.00		357.06	1513.60	0.00	0.00
25.00		350.08	1484.21	0.00	0.00
30.00		343.09	1454.83	0.00	0.00
35.00		341.81	1425.44	0.00	0.00
40.00		347.72	1396.06	0.00	0.00
42.75		191.71	755.73	0.00	0.00
45.00		159.79	1066.73	0.00	0.00
49.00		287.16	1870.11	0.00	0.00
50.00		71.42	236.89	0.00	0.00
55.00		362.10	1167.70	0.00	0.00
60.00		362.93	1142.03	0.00	0.00
65.00		362.85	1116.35	0.00	0.00
70.00		361.96	1090.68	0.00	0.00
75.00		360.33	1065.01	0.00	0.00
80.00		358.04	1039.34	0.00	0.00
82.50		177.20	510.46	0.00	0.00
85.00		179.03	857.07	0.00	0.00
87.75		196.06	929.95	0.00	0.00
90.00		159.49	387.31	0.00	0.00
95.00		353.08	843.84	0.00	0.00
100.00		348.71	821.88	0.00	0.00
105.00		343.88	799.92	0.00	0.00
110.00		338.63	777.96	0.00	0.00
115.00		332.98	756.00	0.00	0.00
120.00		326.95	734.04	0.00	0.00
123.25		208.69	465.74	0.00	0.00
125.00		112.66	405.49	0.00	0.00
127.50		159.68	571.32	0.00	0.00
130.00		157.98	293.61	0.00	0.00
135.00		311.55	572.68	0.00	0.00
140.00		304.25	554.43	0.00	0.00
145.00		296.65	536.19	0.00	0.00
147.00	(16) appurtenances	2769.40	2280.07	0.00	0.00
150.00		171.97	305.86	0.00	0.00
155.00		280.63	494.49	0.00	0.00
157.00	(20) appurtenances	5046.20	3569.10	0.00	0.00
160.00		162.01	261.05	0.00	0.00
165.00		263.56	419.80	0.00	0.00
167.00	(7) appurtenances	1848.02	1963.22	0.00	0.00
168.00	(1) appurtenances	115.60	123.54	0.00	162.09
	Totals:	20,696.00	42,747.71	0.00	162.09

Resulting Forces and Deflections

Structure: CT02217-S-SB
Site Name: Pomfret School
Height: 168.00 (ft)
Base Elev: 0.000 (ft)

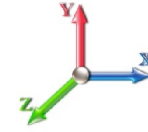
Code: EIA/TIA-222-F
Exposure: C
Gh: 1.69
Struct Class: II

10/15/2015
 Page: 15



Load Case: 73.61 mph Wind with 0.5" Ice

Dead Load Factor 1.00
Wind Load Factor 1.00



Iterations: 24

Elev (ft)	Lateral FX (-) (kips)	Axial FY (-) (kips)	Lateral FZ (kips)	Moment MX (ft-kips)	Torsion MY (ft-kips)	Moment MZ (ft-kips)	Deflect X (in)	Deflect Z (in)	Deflect Resultant (in)	Rotation Sway (deg)	Rotation Twist (deg)
0.00	-20.732	-42.730	0.000	0.000	0.000	-2476.3	0.000	0.000	0.000	0.000	0.000
5.00	-20.423	-41.122	0.000	0.000	0.000	-2372.7	-0.052	0.000	0.052	-0.097	0.000
10.00	-20.117	-39.516	0.000	0.000	0.000	-2270.6	-0.208	0.000	0.208	-0.196	0.000
15.00	-19.813	-37.940	0.000	0.000	0.000	-2170.0	-0.467	0.000	0.467	-0.296	0.000
20.00	-19.511	-36.394	0.000	0.000	0.000	-2070.9	-0.832	0.000	0.832	-0.398	0.000
25.00	-19.213	-34.878	0.000	0.000	0.000	-1973.4	-1.303	0.000	1.303	-0.500	0.000
30.00	-18.916	-33.392	0.000	0.000	0.000	-1877.3	-1.883	0.000	1.883	-0.604	0.000
35.00	-18.617	-31.936	0.000	0.000	0.000	-1782.7	-2.573	0.000	2.573	-0.710	0.000
40.00	-18.295	-30.518	0.000	0.000	0.000	-1689.6	-3.373	0.000	3.373	-0.816	0.000
42.75	-18.121	-29.748	0.000	0.000	0.000	-1639.3	-3.861	0.000	3.861	-0.876	0.000
45.00	-17.978	-28.663	0.000	0.000	0.000	-1598.6	-4.286	0.000	4.286	-0.925	0.000
49.00	-17.685	-26.781	0.000	0.000	0.000	-1526.6	-5.099	0.000	5.099	-1.013	0.000
50.00	-17.643	-26.523	0.000	0.000	0.000	-1509.0	-5.313	0.000	5.313	-1.035	0.000
55.00	-17.313	-25.326	0.000	0.000	0.000	-1420.7	-6.463	0.000	6.463	-1.157	0.000
60.00	-16.978	-24.155	0.000	0.000	0.000	-1334.2	-7.741	0.000	7.741	-1.280	0.000
65.00	-16.639	-23.012	0.000	0.000	0.000	-1249.3	-9.147	0.000	9.147	-1.403	0.000
70.00	-16.296	-21.895	0.000	0.000	0.000	-1166.1	-10.683	0.000	10.683	-1.527	0.000
75.00	-15.952	-20.806	0.000	0.000	0.000	-1084.6	-12.349	0.000	12.349	-1.652	0.000
80.00	-15.595	-19.752	0.000	0.000	0.000	-1004.9	-14.146	0.000	14.146	-1.776	0.000
82.50	-15.423	-19.231	0.000	0.000	0.000	-965.92	-15.093	0.000	15.093	-1.840	0.000
85.00	-15.238	-18.362	0.000	0.000	0.000	-927.36	-16.074	0.000	16.074	-1.903	0.000
87.75	-15.030	-17.423	0.000	0.000	0.000	-885.46	-17.190	0.000	17.190	-1.973	0.000
90.00	-14.886	-17.015	0.000	0.000	0.000	-851.64	-18.134	0.000	18.134	-2.030	0.000
95.00	-14.542	-16.150	0.000	0.000	0.000	-777.21	-20.336	0.000	20.336	-2.171	0.000
100.00	-14.198	-15.308	0.000	0.000	0.000	-704.50	-22.684	0.000	22.684	-2.310	0.000
105.00	-13.856	-14.490	0.000	0.000	0.000	-633.51	-25.176	0.000	25.176	-2.447	0.000
110.00	-13.515	-13.697	0.000	0.000	0.000	-564.23	-27.810	0.000	27.810	-2.580	0.000
115.00	-13.176	-12.928	0.000	0.000	0.000	-496.66	-30.582	0.000	30.582	-2.710	0.000
120.00	-12.836	-12.188	0.000	0.000	0.000	-430.78	-33.487	0.000	33.487	-2.834	0.000
123.25	-12.616	-11.720	0.000	0.000	0.000	-389.06	-35.443	0.000	35.443	-2.913	0.000
125.00	-12.493	-11.310	0.000	0.000	0.000	-366.99	-36.519	0.000	36.519	-2.955	0.000
127.50	-12.314	-10.736	0.000	0.000	0.000	-335.75	-38.081	0.000	38.081	-3.012	0.000
130.00	-12.157	-10.432	0.000	0.000	0.000	-304.97	-39.673	0.000	39.673	-3.067	0.000
135.00	-11.834	-9.855	0.000	0.000	0.000	-244.19	-42.948	0.000	42.948	-3.184	0.000
140.00	-11.514	-9.300	0.000	0.000	0.000	-185.02	-46.339	0.000	46.339	-3.287	0.000
145.00	-11.194	-8.771	0.000	0.000	0.000	-127.45	-49.827	0.000	49.827	-3.369	0.000
147.00	-8.299	-6.654	0.000	0.000	0.000	-105.07	-51.244	0.000	51.244	-3.397	0.000
150.00	-8.113	-6.354	0.000	0.000	0.000	-80.173	-53.390	0.000	53.390	-3.432	0.000
155.00	-7.806	-5.874	0.000	0.000	0.000	-39.607	-57.006	0.000	57.006	-3.472	0.000
157.00	-2.553	-2.617	0.000	0.000	0.000	-23.996	-58.462	0.000	58.462	-3.481	0.000
160.00	-2.376	-2.366	0.000	0.000	0.000	-16.338	-60.651	0.000	60.651	-3.491	0.000
165.00	-2.087	-1.963	0.000	0.000	0.000	-4.459	-64.310	0.000	64.310	-3.500	0.000
167.00	-0.123	-0.116	0.000	0.000	0.000	-0.285	-65.776	0.000	65.776	-3.500	0.000
168.00	-0.116	0.000	0.000	0.000	0.000	-0.162	0.000	0.000	66.508	-3.501	0.000

Resulting Stresses

Structure: CT02217-S-SBA
Site Name: Pomfret School
Height: 168.00 (ft)
Base Elev: 0.000 (ft)

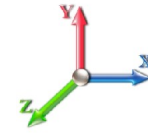
Code: EIA/TIA-222-F
Exposure: C
Gh: 1.69
Struct Class: II

10/15/2015
 Page: 16



Load Case: 73.61 mph Wind with 0.5" Ice

Dead Load Factor 1.00
Wind Load Factor 1.00



Iterations: 24

Applied Stresses

Elev (ft)	fa Axial (Y) (ksi)	fvx Shear (X) (ksi)	fvz Shear (Z) (ksi)	fvT Torsion (ksi)	fbx Bending (X) (ksi)	fbz Bending (Z) (ksi)	fb Combined (ksi)	Allow Stress (ksi)	f/Fb Stress Ratio
0.00	0.52	0.51	0.00	0.00	0.00	25.19	25.73	52.0	0.495
5.00	0.51	0.52	0.00	0.00	0.00	25.07	25.60	52.0	0.492
10.00	0.50	0.52	0.00	0.00	0.00	24.94	25.45	52.0	0.490
15.00	0.49	0.52	0.00	0.00	0.00	24.79	25.30	52.0	0.487
20.00	0.48	0.52	0.00	0.00	0.00	24.63	25.13	52.0	0.483
25.00	0.47	0.52	0.00	0.00	0.00	24.46	24.95	52.0	0.480
30.00	0.46	0.53	0.00	0.00	0.00	24.27	24.74	52.0	0.476
35.00	0.45	0.53	0.00	0.00	0.00	24.05	24.52	52.0	0.472
40.00	0.44	0.53	0.00	0.00	0.00	23.82	24.28	52.0	0.467
42.75	0.44	0.53	0.00	0.00	0.00	23.68	24.14	52.0	0.464
45.00	0.42	0.54	0.00	0.00	0.00	23.57	24.01	52.0	0.462
49.00	0.46	0.62	0.00	0.00	0.00	26.30	26.78	52.0	0.515
50.00	0.46	0.62	0.00	0.00	0.00	26.23	26.71	52.0	0.514
55.00	0.45	0.62	0.00	0.00	0.00	25.86	26.34	52.0	0.507
60.00	0.44	0.62	0.00	0.00	0.00	25.46	25.92	52.0	0.499
65.00	0.43	0.62	0.00	0.00	0.00	25.02	25.47	52.0	0.490
70.00	0.42	0.63	0.00	0.00	0.00	24.54	24.98	52.0	0.481
75.00	0.41	0.63	0.00	0.00	0.00	24.02	24.45	52.0	0.470
80.00	0.40	0.63	0.00	0.00	0.00	23.44	23.86	52.0	0.459
82.50	0.39	0.63	0.00	0.00	0.00	23.14	23.55	52.0	0.453
85.00	0.38	0.63	0.00	0.00	0.00	22.82	23.23	52.0	0.447
87.75	0.43	0.75	0.00	0.00	0.00	26.00	26.46	52.0	0.509
90.00	0.43	0.75	0.00	0.00	0.00	25.63	26.09	52.0	0.502
95.00	0.41	0.75	0.00	0.00	0.00	24.72	25.17	52.0	0.484
100.00	0.40	0.76	0.00	0.00	0.00	23.73	24.17	52.0	0.465
105.00	0.39	0.76	0.00	0.00	0.00	22.63	23.06	52.0	0.444
110.00	0.38	0.76	0.00	0.00	0.00	21.41	21.84	52.0	0.420
115.00	0.37	0.77	0.00	0.00	0.00	20.06	20.48	52.0	0.394
120.00	0.36	0.77	0.00	0.00	0.00	18.56	18.97	52.0	0.365
123.25	0.36	0.78	0.00	0.00	0.00	17.50	17.91	52.0	0.344
125.00	0.35	0.78	0.00	0.00	0.00	16.90	17.30	52.0	0.333
127.50	0.41	0.96	0.00	0.00	0.00	19.27	19.76	52.0	0.380
130.00	0.41	0.96	0.00	0.00	0.00	18.11	18.60	52.0	0.358
135.00	0.40	0.97	0.00	0.00	0.00	15.56	16.04	52.0	0.309
140.00	0.39	0.98	0.00	0.00	0.00	12.67	13.17	52.0	0.253
145.00	0.38	0.99	0.00	0.00	0.00	9.41	9.94	52.0	0.191
147.00	0.30	0.74	0.00	0.00	0.00	8.00	8.40	52.0	0.162
150.00	0.29	0.74	0.00	0.00	0.00	6.40	6.81	52.0	0.131
155.00	0.28	0.75	0.00	0.00	0.00	3.43	3.93	52.0	0.076
157.00	0.13	0.25	0.00	0.00	0.00	2.15	2.32	52.0	0.045
160.00	0.12	0.24	0.00	0.00	0.00	1.54	1.71	52.0	0.033
165.00	0.10	0.22	0.00	0.00	0.00	0.46	0.68	52.0	0.013
167.00	0.01	0.01	0.00	0.00	0.00	0.03	0.04	52.0	0.001
168.00	0.00	0.01	0.00	0.00	0.00	0.02	0.03	52.0	0.001

Wind Loading - Shaft

Structure: CT02217-S-SBA
Site Name: Pomfret School
Height: 168.00 (ft)
Base Elev: 0.000 (ft)

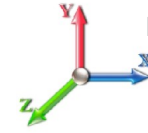
Code: EIA/TIA-222-F
Exposure: C
Gh: 1.69
Struct Class: II

10/15/2015
 Page: 17



Load Case: 50 mph Wind with 0" Ice

Dead Load Factor 1.00
Wind Load Factor 1.00



Iterations: 24

Elev (ft)	Description	Kzt	Kz	qz (psf)	qzGh (psf)	C (mph-ft)	Cf	Ice Thick (in)	Tributary (ft)	Aa (sf)	CfAa (sf)	Wind Force X (lb)	Dead Load Ice (lb)	Tot Dead Load (lb)
0.00		0.00	1.00	6.400	10.82	246.21	0.650	0.000	0.00	0.000	0.00	0.0	0.0	0.0
5.00		0.00	1.00	6.400	10.82	241.62	0.650	0.000	5.00	24.392	15.85	171.5	0.0	1372.7
10.00		0.00	1.00	6.400	10.82	237.04	0.650	0.000	5.00	23.933	15.56	168.3	0.0	1346.7
15.00		0.00	1.00	6.400	10.82	232.46	0.650	0.000	5.00	23.475	15.26	165.0	0.0	1320.7
20.00		0.00	1.00	6.400	10.82	227.87	0.650	0.000	5.00	23.016	14.96	161.8	0.0	1294.7
25.00		0.00	1.00	6.400	10.82	223.29	0.650	0.000	5.00	22.558	14.66	158.6	0.0	1268.7
30.00		0.00	1.00	6.400	10.82	218.70	0.650	0.000	5.00	22.100	14.36	155.4	0.0	1242.7
35.00		0.00	1.02	6.509	11.00	215.93	0.650	0.000	5.00	21.641	14.07	154.7	0.0	1216.7
40.00		0.00	1.06	6.762	11.43	215.37	0.650	0.000	5.00	21.183	13.77	157.3	0.0	1190.7
42.75	Bot - Section 2	0.00	1.08	6.891	11.65	214.81	0.650	0.000	2.75	11.455	7.45	86.7	0.0	643.8
45.00		0.00	1.09	6.993	11.82	214.24	0.650	0.000	2.25	9.410	6.12	72.3	0.0	974.8
49.00	Top - Section 1	0.00	1.12	7.165	12.11	212.98	0.650	0.000	4.00	16.500	10.72	129.9	0.0	1708.9
50.00		0.00	1.13	7.207	12.18	215.94	0.650	0.000	1.00	4.079	2.65	32.3	0.0	196.7
55.00		0.00	1.16	7.406	12.52	213.97	0.650	0.000	5.00	20.120	13.08	163.7	0.0	970.2
60.00		0.00	1.19	7.592	12.83	211.65	0.650	0.000	5.00	19.662	12.78	164.0	0.0	948.0
65.00		0.00	1.21	7.768	13.13	209.04	0.650	0.000	5.00	19.203	12.48	163.9	0.0	925.7
70.00		0.00	1.24	7.934	13.41	206.16	0.650	0.000	5.00	18.745	12.18	163.4	0.0	903.4
75.00		0.00	1.26	8.092	13.68	203.04	0.650	0.000	5.00	18.287	11.89	162.5	0.0	881.1
80.00		0.00	1.29	8.242	13.93	199.72	0.650	0.000	5.00	17.828	11.59	161.4	0.0	858.9
82.50	Bot - Section 3	0.00	1.30	8.315	14.05	197.99	0.650	0.000	2.50	8.742	5.68	79.9	0.0	421.1
85.00		0.00	1.31	8.387	14.17	196.21	0.650	0.000	2.50	8.758	5.69	80.7	0.0	767.6
87.75	Top - Section 2	0.00	1.32	8.463	14.30	194.21	0.650	0.000	2.75	9.501	6.18	88.3	0.0	832.5
90.00		0.00	1.33	8.525	14.41	195.54	0.650	0.000	2.25	7.671	4.99	71.8	0.0	308.3
95.00		0.00	1.35	8.657	14.63	191.72	0.650	0.000	5.00	16.713	10.86	158.9	0.0	671.6
100.00		0.00	1.37	8.785	14.85	187.76	0.650	0.000	5.00	16.255	10.57	156.9	0.0	653.1
105.00		0.00	1.39	8.908	15.06	183.67	0.650	0.000	5.00	15.797	10.27	154.6	0.0	634.5
110.00		0.00	1.41	9.028	15.26	179.45	0.650	0.000	5.00	15.338	9.97	152.1	0.0	615.9
115.00		0.00	1.43	9.143	15.45	175.11	0.650	0.000	5.00	14.880	9.67	149.4	0.0	597.4
120.00		0.00	1.45	9.255	15.64	170.67	0.650	0.000	5.00	14.421	9.37	146.6	0.0	578.8
123.25	Bot - Section 4	0.00	1.46	9.326	15.76	167.72	0.650	0.000	3.25	9.128	5.93	93.5	0.0	366.3
125.00		0.00	1.46	9.363	15.82	166.12	0.650	0.000	1.75	4.908	3.19	50.5	0.0	351.8
127.50	Top - Section 3	0.00	1.47	9.417	15.91	163.81	0.650	0.000	2.50	6.914	4.49	71.5	0.0	495.5
130.00		0.00	1.48	9.469	16.00	164.01	0.650	0.000	2.50	6.799	4.42	70.7	0.0	218.6
135.00		0.00	1.50	9.572	16.18	159.29	0.650	0.000	5.00	13.255	8.62	139.4	0.0	426.1
140.00		0.00	1.51	9.672	16.35	154.49	0.650	0.000	5.00	12.796	8.32	136.0	0.0	411.2
145.00		0.00	1.53	9.769	16.51	149.60	0.650	0.000	5.00	12.338	8.02	132.4	0.0	396.4
147.00	Appurtenance(s)	0.00	1.53	9.807	16.57	147.62	0.650	0.000	2.00	4.807	3.12	51.8	0.0	154.4
150.00		0.00	1.54	9.864	16.67	144.64	0.650	0.000	3.00	7.073	4.60	76.6	0.0	227.1
155.00		0.00	1.56	9.957	16.83	139.60	0.650	0.000	5.00	11.421	7.42	124.9	0.0	366.7
157.00	Appurtenance(s)	0.00	1.56	9.994	16.89	137.56	0.650	0.000	2.00	4.440	2.89	48.7	0.0	142.5
160.00		0.00	1.57	10.048	16.98	134.49	0.650	0.000	3.00	6.523	4.24	72.0	0.0	209.3
165.00		0.00	1.58	10.136	17.13	129.31	0.650	0.000	5.00	10.504	6.83	117.0	0.0	337.0
167.00	Appurtenance(s)	0.00	1.59	10.171	17.19	127.22	0.650	0.000	2.00	4.073	2.65	45.5	0.0	130.6
168.00	Appurtenance(s)	0.00	1.59	10.189	17.22	126.17	0.650	0.000	1.00	2.009	1.31	22.5	0.0	64.4
Totals:									168.00			5,084.9		29,643.8

Discrete Appurtenance Forces

Structure: CT02217-S-SB
Site Name: Pomfret School
Height: 168.00 (ft)
Base Elev: 0.000 (ft)

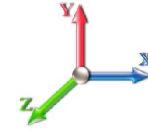
Code: EIA/TIA-222-F
Exposure: C
Gh: 1.69
Struct Class: II

10/15/2015
 Page: 18



Load Case: 50 mph Wind with 0" Ice

Dead Load Factor 1.00
Wind Load Factor 1.00



Iterations: 24

No.	Elev (ft)	Description	Qty	qz (psf)	qzGh (psf)	CaAa Factor	Total CaAa (sf)	Dead Load (lb)	Horiz Ecc (ft)	Vert Ecc (ft)	Wind FX (lb)	Mom Y (lb-ft)	Mom Z (lb-ft)
1	168.00	Lightning Rod	1	10.232	17.292	1.00	1.05	35.00	0.000	2.500	18.16	0.00	45.39
2	167.00	Low Profile Platform	1	10.171	17.190	1.00	22.00	1500.00	0.000	0.000	378.17	0.00	0.00
3	167.00	Decibel DB908H90E-M w/	6	10.171	17.190	0.74	25.31	252.00	0.000	0.000	435.04	0.00	0.00
4	157.00	RFS DB-T1-6Z-8AB-0Z	1	9.994	16.889	0.67	3.75	18.90	0.000	0.000	63.37	0.00	0.00
5	157.00	Low Profile Platform	1	9.994	16.889	1.00	22.00	1500.00	0.000	0.000	371.56	0.00	0.00
6	157.00	Commscope	6	9.994	16.889	0.83	41.88	232.80	0.000	0.000	707.34	0.00	0.00
7	157.00	Commscope	6	9.994	16.889	0.77	40.33	244.20	0.000	0.000	681.18	0.00	0.00
8	157.00	ALU RRH 2x60-AWS	3	9.994	16.889	0.67	7.96	180.00	0.000	0.000	134.43	0.00	0.00
9	157.00	ALU RRH 2x40-700U	3	9.994	16.889	0.67	4.48	152.10	0.000	0.000	75.70	0.00	0.00
10	147.00	RFS	3	9.807	16.574	0.73	7.93	56.10	0.000	0.000	131.40	0.00	0.00
11	147.00	Low Profile Platform w/ Reinf.	1	9.807	16.574	1.00	30.00	1800.00	0.000	0.000	497.23	0.00	0.00
12	147.00	Kathrein 782 11056	3	9.807	16.574	0.67	0.56	5.40	0.000	0.000	9.33	0.00	0.00
13	147.00	Ericsson KRY 112 144/1	3	9.807	16.574	0.67	0.82	33.00	0.000	0.000	13.66	0.00	0.00
14	147.00	Commscope	3	9.807	16.574	0.82	28.17	150.90	0.000	0.000	466.85	0.00	0.00
15	147.00	Allen Telecom	3	9.807	16.574	0.67	1.09	52.50	0.000	0.000	17.99	0.00	0.00
Totals:								6,212.90			4,001.41		

Total Applied Force Summary

Structure: CT02217-S-SB
Site Name: Pomfret School
Height: 168.00 (ft)
Base Elev: 0.000 (ft)

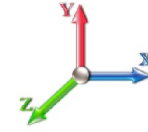
Code: EIA/TIA-222-F
Exposure: C
Gh: 1.69
Struct Class: II

10/15/2015
 Page: 19



Load Case: 50 mph Wind with 0" Ice

Dead Load Factor 1.00
Wind Load Factor 1.00



Iterations: 24

Elev (ft)	Description	Lateral FX (-) (lb)	Axial FY (-) (lb)	Torsion MY (lb-ft)	Moment MZ (lb-ft)
0.00		0.00	0.00	0.00	0.00
5.00		171.48	1392.11	0.00	0.00
10.00		168.26	1395.28	0.00	0.00
15.00		165.04	1369.29	0.00	0.00
20.00		161.81	1343.30	0.00	0.00
25.00		158.59	1317.31	0.00	0.00
30.00		155.37	1291.32	0.00	0.00
35.00		154.73	1265.33	0.00	0.00
40.00		157.34	1239.34	0.00	0.00
42.75		86.72	670.56	0.00	0.00
45.00		72.29	996.69	0.00	0.00
49.00		129.87	1747.77	0.00	0.00
50.00		32.29	206.44	0.00	0.00
55.00		163.68	1018.85	0.00	0.00
60.00		163.98	996.57	0.00	0.00
65.00		163.86	974.29	0.00	0.00
70.00		163.37	952.02	0.00	0.00
75.00		162.55	929.74	0.00	0.00
80.00		161.42	907.46	0.00	0.00
82.50		79.85	445.38	0.00	0.00
85.00		80.68	791.86	0.00	0.00
87.75		88.33	859.25	0.00	0.00
90.00		71.83	330.16	0.00	0.00
95.00		158.95	720.22	0.00	0.00
100.00		156.87	701.66	0.00	0.00
105.00		154.58	683.09	0.00	0.00
110.00		152.11	664.53	0.00	0.00
115.00		149.45	645.96	0.00	0.00
120.00		146.62	627.40	0.00	0.00
123.25		93.51	397.85	0.00	0.00
125.00		50.48	368.81	0.00	0.00
127.50		71.52	519.77	0.00	0.00
130.00		70.72	242.91	0.00	0.00
135.00		139.36	474.68	0.00	0.00
140.00		135.95	459.82	0.00	0.00
145.00		132.40	444.97	0.00	0.00
147.00	(16) appurtenances	1188.25	2271.73	0.00	0.00
150.00		76.64	253.17	0.00	0.00
155.00		124.92	410.07	0.00	0.00
157.00	(20) appurtenances	2082.33	2487.87	0.00	0.00
160.00		71.99	212.43	0.00	0.00
165.00		116.96	342.16	0.00	0.00
167.00	(7) appurtenances	858.72	1884.71	0.00	0.00
168.00	(1) appurtenances	40.64	99.42	0.00	45.39
Totals:		9,086.31	37,353.54	0.00	45.39

Resulting Forces and Deflections

Structure: CT02217-S-SB
Site Name: Pomfret School
Height: 168.00 (ft)
Base Elev: 0.000 (ft)

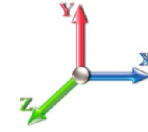
Code: EIA/TIA-222-F
Exposure: C
Gh: 1.69
Struct Class: II

10/15/2015
 Page: 20



Load Case: 50 mph Wind with 0" Ice

Dead Load Factor 1.00
Wind Load Factor 1.00



Iterations: 24

Elev (ft)	Lateral FX (-) (kips)	Axial FY (-) (kips)	Lateral FZ (kips)	Moment MX (ft-kips)	Torsion MY (ft-kips)	Moment MZ (ft-kips)	Deflect X (in)	Deflect Z (in)	Deflect Resultant (in)	Rotation Sway (deg)	Rotation Twist (deg)
0.00	-9.100	-37.350	0.000	0.000	0.000	-1071.7	0.000	0.000	0.000	0.000	0.000
5.00	-8.955	-35.951	0.000	0.000	0.000	-1026.2	-0.023	0.000	0.023	-0.042	0.000
10.00	-8.811	-34.550	0.000	0.000	0.000	-981.48	-0.090	0.000	0.090	-0.085	0.000
15.00	-8.668	-33.174	0.000	0.000	0.000	-937.42	-0.202	0.000	0.202	-0.128	0.000
20.00	-8.527	-31.825	0.000	0.000	0.000	-894.08	-0.360	0.000	0.360	-0.172	0.000
25.00	-8.388	-30.501	0.000	0.000	0.000	-851.45	-0.564	0.000	0.564	-0.216	0.000
30.00	-8.250	-29.204	0.000	0.000	0.000	-809.51	-0.814	0.000	0.814	-0.261	0.000
35.00	-8.112	-27.933	0.000	0.000	0.000	-768.26	-1.112	0.000	1.112	-0.306	0.000
40.00	-7.964	-26.690	0.000	0.000	0.000	-727.70	-1.457	0.000	1.457	-0.352	0.000
42.75	-7.883	-26.017	0.000	0.000	0.000	-705.80	-1.668	0.000	1.668	-0.378	0.000
45.00	-7.817	-25.017	0.000	0.000	0.000	-688.06	-1.851	0.000	1.851	-0.399	0.000
49.00	-7.684	-23.267	0.000	0.000	0.000	-656.79	-2.202	0.000	2.202	-0.437	0.000
50.00	-7.663	-23.056	0.000	0.000	0.000	-649.11	-2.295	0.000	2.295	-0.447	0.000
55.00	-7.511	-22.032	0.000	0.000	0.000	-610.80	-2.791	0.000	2.791	-0.499	0.000
60.00	-7.357	-21.030	0.000	0.000	0.000	-573.24	-3.342	0.000	3.342	-0.552	0.000
65.00	-7.202	-20.051	0.000	0.000	0.000	-536.45	-3.948	0.000	3.948	-0.605	0.000
70.00	-7.046	-19.094	0.000	0.000	0.000	-500.44	-4.610	0.000	4.610	-0.658	0.000
75.00	-6.889	-18.160	0.000	0.000	0.000	-465.21	-5.328	0.000	5.328	-0.711	0.000
80.00	-6.728	-17.250	0.000	0.000	0.000	-430.77	-6.102	0.000	6.102	-0.765	0.000
82.50	-6.650	-16.803	0.000	0.000	0.000	-413.95	-6.510	0.000	6.510	-0.792	0.000
85.00	-6.567	-16.009	0.000	0.000	0.000	-397.32	-6.932	0.000	6.932	-0.819	0.000
87.75	-6.473	-15.148	0.000	0.000	0.000	-379.26	-7.413	0.000	7.413	-0.849	0.000
90.00	-6.407	-14.814	0.000	0.000	0.000	-364.70	-7.819	0.000	7.819	-0.874	0.000
95.00	-6.252	-14.090	0.000	0.000	0.000	-332.66	-8.766	0.000	8.766	-0.934	0.000
100.00	-6.097	-13.385	0.000	0.000	0.000	-301.41	-9.776	0.000	9.776	-0.993	0.000
105.00	-5.943	-12.698	0.000	0.000	0.000	-270.92	-10.848	0.000	10.848	-1.052	0.000
110.00	-5.790	-12.031	0.000	0.000	0.000	-241.21	-11.981	0.000	11.981	-1.109	0.000
115.00	-5.639	-11.383	0.000	0.000	0.000	-212.26	-13.172	0.000	13.172	-1.164	0.000
120.00	-5.487	-10.755	0.000	0.000	0.000	-184.06	-14.421	0.000	14.421	-1.218	0.000
123.25	-5.390	-10.356	0.000	0.000	0.000	-166.23	-15.261	0.000	15.261	-1.251	0.000
125.00	-5.335	-9.987	0.000	0.000	0.000	-156.80	-15.723	0.000	15.723	-1.269	0.000
127.50	-5.256	-9.467	0.000	0.000	0.000	-143.46	-16.395	0.000	16.395	-1.293	0.000
130.00	-5.186	-9.222	0.000	0.000	0.000	-130.32	-17.078	0.000	17.078	-1.317	0.000
135.00	-5.042	-8.747	0.000	0.000	0.000	-104.40	-18.485	0.000	18.485	-1.367	0.000
140.00	-4.901	-8.287	0.000	0.000	0.000	-79.188	-19.942	0.000	19.942	-1.411	0.000
145.00	-4.761	-7.843	0.000	0.000	0.000	-54.684	-21.440	0.000	21.440	-1.446	0.000
147.00	-3.517	-5.602	0.000	0.000	0.000	-45.162	-22.048	0.000	22.048	-1.458	0.000
150.00	-3.435	-5.350	0.000	0.000	0.000	-34.613	-22.970	0.000	22.970	-1.473	0.000
155.00	-3.300	-4.942	0.000	0.000	0.000	-17.438	-24.523	0.000	24.523	-1.490	0.000
157.00	-1.154	-2.509	0.000	0.000	0.000	-10.837	-25.148	0.000	25.148	-1.495	0.000
160.00	-1.077	-2.299	0.000	0.000	0.000	-7.375	-26.089	0.000	26.089	-1.499	0.000
165.00	-0.951	-1.960	0.000	0.000	0.000	-1.991	-27.661	0.000	27.661	-1.503	0.000
167.00	-0.043	-0.098	0.000	0.000	0.000	-0.089	-28.291	0.000	28.291	-1.503	0.000
168.00	-0.041	0.000	0.000	0.000	0.000	-0.045	0.000	0.000	28.606	-1.503	0.000

Resulting Stresses

Structure: CT02217-S-SBA
Site Name: Pomfret School
Height: 168.00 (ft)
Base Elev: 0.000 (ft)

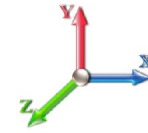
Code: EIA/TIA-222-F
Exposure: C
Gh: 1.69
Struct Class: II

10/15/2015
 Page: 21



Load Case: 50 mph Wind with 0" Ice

Dead Load Factor 1.00
Wind Load Factor 1.00



Iterations: 24

Applied Stresses

Elev (ft)	fa Axial (Y) (ksi)	fvx Shear (X) (ksi)	fvz Shear (Z) (ksi)	fvT Torsion (ksi)	fbx Bending (X) (ksi)	fbz Bending (Z) (ksi)	fb Combined (ksi)	f Allow Stress (ksi)	f/Fb Stress Ratio
0.00	0.46	0.23	0.00	0.00	0.00	10.90	11.37	52.0	0.219
5.00	0.45	0.23	0.00	0.00	0.00	10.84	11.30	52.0	0.217
10.00	0.44	0.23	0.00	0.00	0.00	10.78	11.23	52.0	0.216
15.00	0.43	0.23	0.00	0.00	0.00	10.71	11.15	52.0	0.214
20.00	0.42	0.23	0.00	0.00	0.00	10.63	11.06	52.0	0.213
25.00	0.41	0.23	0.00	0.00	0.00	10.55	10.97	52.0	0.211
30.00	0.40	0.23	0.00	0.00	0.00	10.46	10.87	52.0	0.209
35.00	0.39	0.23	0.00	0.00	0.00	10.37	10.77	52.0	0.207
40.00	0.39	0.23	0.00	0.00	0.00	10.26	10.65	52.0	0.205
42.75	0.38	0.23	0.00	0.00	0.00	10.20	10.58	52.0	0.204
45.00	0.37	0.23	0.00	0.00	0.00	10.14	10.52	52.0	0.202
49.00	0.40	0.27	0.00	0.00	0.00	11.31	11.72	52.0	0.226
50.00	0.40	0.27	0.00	0.00	0.00	11.28	11.69	52.0	0.225
55.00	0.39	0.27	0.00	0.00	0.00	11.12	11.52	52.0	0.222
60.00	0.38	0.27	0.00	0.00	0.00	10.94	11.33	52.0	0.218
65.00	0.37	0.27	0.00	0.00	0.00	10.74	11.13	52.0	0.214
70.00	0.36	0.27	0.00	0.00	0.00	10.53	10.91	52.0	0.210
75.00	0.36	0.27	0.00	0.00	0.00	10.30	10.67	52.0	0.205
80.00	0.35	0.27	0.00	0.00	0.00	10.05	10.41	52.0	0.200
82.50	0.34	0.27	0.00	0.00	0.00	9.92	10.27	52.0	0.198
85.00	0.33	0.27	0.00	0.00	0.00	9.78	10.12	52.0	0.195
87.75	0.37	0.32	0.00	0.00	0.00	11.14	11.52	52.0	0.222
90.00	0.37	0.32	0.00	0.00	0.00	10.98	11.36	52.0	0.219
95.00	0.36	0.32	0.00	0.00	0.00	10.58	10.96	52.0	0.211
100.00	0.35	0.32	0.00	0.00	0.00	10.15	10.52	52.0	0.202
105.00	0.35	0.33	0.00	0.00	0.00	9.68	10.04	52.0	0.193
110.00	0.34	0.33	0.00	0.00	0.00	9.15	9.51	52.0	0.183
115.00	0.33	0.33	0.00	0.00	0.00	8.57	8.92	52.0	0.172
120.00	0.32	0.33	0.00	0.00	0.00	7.93	8.27	52.0	0.159
123.25	0.32	0.33	0.00	0.00	0.00	7.48	7.81	52.0	0.150
125.00	0.31	0.33	0.00	0.00	0.00	7.22	7.55	52.0	0.145
127.50	0.37	0.41	0.00	0.00	0.00	8.24	8.63	52.0	0.166
130.00	0.36	0.41	0.00	0.00	0.00	7.74	8.13	52.0	0.156
135.00	0.36	0.41	0.00	0.00	0.00	6.65	7.04	52.0	0.135
140.00	0.35	0.42	0.00	0.00	0.00	5.42	5.82	52.0	0.112
145.00	0.34	0.42	0.00	0.00	0.00	4.04	4.44	52.0	0.085
147.00	0.25	0.31	0.00	0.00	0.00	3.44	3.73	52.0	0.072
150.00	0.24	0.31	0.00	0.00	0.00	2.76	3.06	52.0	0.059
155.00	0.23	0.32	0.00	0.00	0.00	1.51	1.83	52.0	0.035
157.00	0.12	0.11	0.00	0.00	0.00	0.97	1.11	52.0	0.021
160.00	0.11	0.11	0.00	0.00	0.00	0.70	0.83	52.0	0.016
165.00	0.10	0.10	0.00	0.00	0.00	0.21	0.35	52.0	0.007
167.00	0.01	0.00	0.00	0.00	0.00	0.01	0.02	52.0	0.000
168.00	0.00	0.00	0.00	0.00	0.00	0.00	0.01	52.0	0.000

Final Analysis Summary

Structure: CT02217-S-SBA
Site Name: Pomfret School
Height: 168.00 (ft)
Base Elev: 0.000 (ft)

Code: EIA/TIA-222-F
Exposure: C
Gh: 1.69
Struct Class: II

10/15/2015
 Page: 22



Reactions

Load Case	Shear FX (kips)	Shear FZ (kips)	Axial FY (kips)	Moment MX (ft-kips)	Moment MY (ft-kips)	t MZ (ft-kips)
85 mph Wind with 0" Ice	26.3	0.00	37.32	0.00	0.00	3095.05
73.61 mph Wind with 0.5" Ice	20.7	0.00	42.73	0.00	0.00	2476.39
50 mph Wind with 0" Ice	9.1	0.00	37.35	0.00	0.00	1071.75

Max Stresses

Load Case	fa Axial (Y) (ksi)	fvx Shear (X) (ksi)	fvz Shear (Z) (ksi)	fvT Torsion (ksi)	fbx Bending (X) (ksi)	fbz Bending (Z) (ksi)	Combined Stress (ksi)	Allowable Stress (ksi)	Elev (ft)	Stress Ratio
85 mph Wind with 0" Ice	0.39	0.77	0.00	0.00	0.00	32.66	33.08	52.0	49.00	0.636
73.61 mph Wind with 0.5" Ice	0.46	0.62	0.00	0.00	0.00	26.30	26.78	52.0	49.00	0.515
50 mph Wind with 0" Ice	0.40	0.27	0.00	0.00	0.00	11.31	11.72	52.0	49.00	0.226

Base Plate Summary

Structure: CT02217-S-SB
Site Name: Pomfret School
Height: 168.00 (ft)
Base Elev: 0.000 (ft)

Code: EIA/TIA-222-F
Exposure: C
Gh: 1.69
Struct Class: II

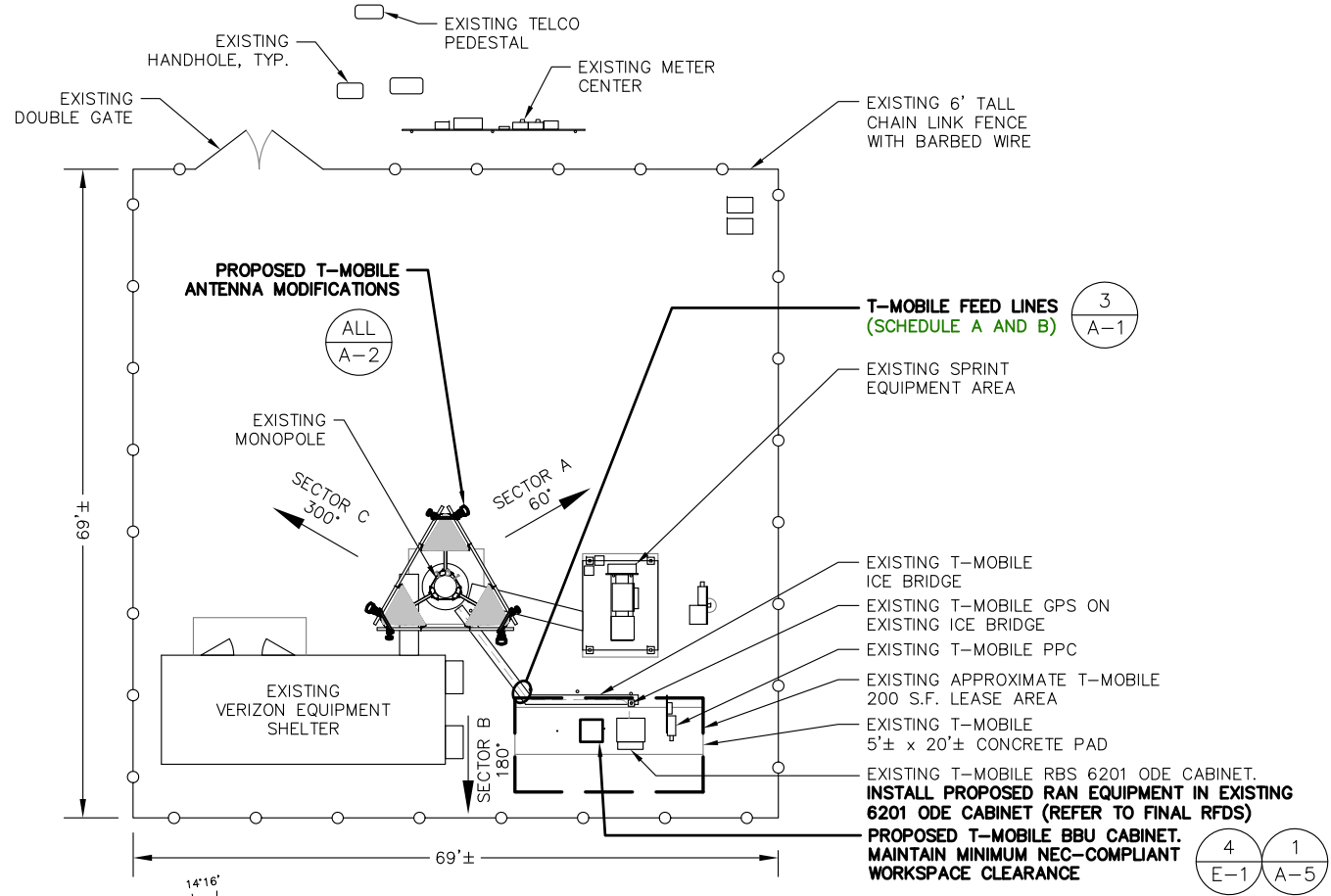
10/15/2015
 Page: 23



Reactions	Base Plate	Anchor Bolts
Original Design		
Moment (kip-ft): 4750.00	Yield (ksi): 50.00	Bolt Circle: 66.00
Axial (kip): 38.00	Width (in): 65.00	Number Bolts: 20.00
Shear (kip): 37.50	Style: Clipped	Bolt Type: 2.25" 18J
	Polygon Sides: 0.00	Bolt Diameter (in): 2.25
Analysis	Clip Length (in): 13.00	Yield (ksi): 75.00
Moment (kip-ft): 3095.05	Effective Len (in): 9.15	Ultimate (ksi): 100.00
Axial (kip): 42.73	Moment (kip-in): 396.23	Arrangement: Clustered
Shear (kip): 26.30	Allow Stress (ksi): 50.00	Cluster Dist (in): 6.00
	Applied Stress (ksi): 28.87	Start Angle (deg): 45.00
Moment Design %: 65.16	Stress Ratio: 0.58	Compression
		Force (kip): 114.68
		Allowable (kip): 195.00
		Ratio: 0.59
		Tension
		Force (kip): 110.41
		Allowable (kip): 195.00
		Ratio: 0.57

ANTENNA MOUNT STRUCTURAL ASSESSMENT REQUIREMENT:
 ENGINEER OF RECORD HAS MADE A VISUAL ASSESSMENT ONLY AND DETERMINED THAT THE EXISTING ANTENNA MOUNT SHALL BE REPLACED OR MODIFIED TO ACCOMMODATE ANY ADDITIONAL EQUIPMENT LOADS. STRUCTURAL DESIGNS AND DETAILS AS SHOWN HEREIN FOR STRUCTURAL MODIFICATIONS OF THE EXISTING ANTENNA MOUNT ARE PRELIMINARY ONLY AND FINAL CONSTRUCTION DETAILS ARE SUBJECT TO CHANGE PENDING THE COMPLETION OF AN ANTENNA MOUNT STRUCTURAL ASSESSMENT.

STRUCTURAL NOTES:
 PRIOR TO COMMENCING CONSTRUCTION, GC SHALL REFER TO TOWER STRUCTURAL ANALYSIS PROVIDED BY SBA TO DETERMINE IF THERE ARE ANY SUPPLEMENTAL OR SPECIAL INSTALLATION REQUIREMENTS FOR TOWER TOP EQUIPMENT AND FOR CABLE BUNDLING, SHIELDING, MOUNTING, OR RELOCATION ARRANGEMENTS

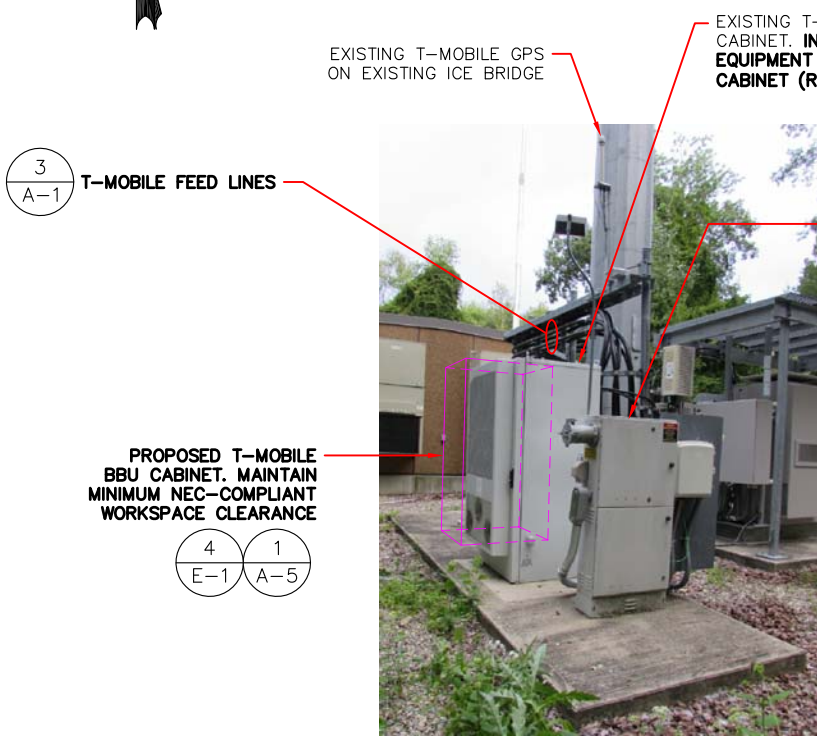


COMPOUND PLAN
 SCALE: 1"=20' (11"x17")
 1"=10' (22"x34")
 1 A-1
 20 10 0 20

☉ OF T-MOBILE ANTENNAS
 PROPOSED ELEV.= 147'± AGL
 (SBA DATABASE)
 (ALL A-2, 1-2 A-3, 1-2 A-4)

FEEDLINE SCHEDULE	FEEDLINE DESCRIPTION	LOCATION
A	EXISTING: TO REMAIN (6) 1-5/8" COAX TO 147' RAD	UP INSIDE MONOPOLE TO RAD
B	PROPOSED: (6) 1-5/8" COAX TO 147' RAD	UP INSIDE MONOPOLE TO RAD

NOTE: EXISTING T-MOBILE EQUIPMENT FEEDLINE INVENTORY BASED ON OBSERVED FIELD CONDITIONS. RFDS AND FEEDLINE LEASING ENTITLEMENTS MAY DIFFER.



EQUIPMENT PHOTO DETAIL
 SCALE: N.T.S.
 2 A-1



FEEDLINE PHOTO DETAIL AT TOWER BASE
 SCALE: N.T.S.
 3 A-1



PARTIAL ELEVATION PHOTO DETAIL
 SCALE: N.T.S.
 4 A-1

T-Mobile
 T-MOBILE NORTHEAST LLC
 35 GRIFFIN ROAD SOUTH
 BLOOMFIELD, CT 06002
 TEL: (860) 648-1116

SBA
 SBA COMMUNICATIONS CORP.
 33 BOSTON POST ROAD WEST, SUITE 320
 MARLBOROUGH, MA 01752
 TEL: (508) 251-0720

ProTerra
 DESIGN GROUP, LLC
 4 Bay Road, Building A
 Suite 200
 Hadley, MA 01035 Ph: (413)320-4918

STATE OF CONNECTICUT
 THOMAS E. JOHNSON
 No. 28192
 PROFESSIONAL ENGINEER
 10-13-15

CHECKED BY: JMM/TEJ
 APPROVED BY: JMM/TEJ

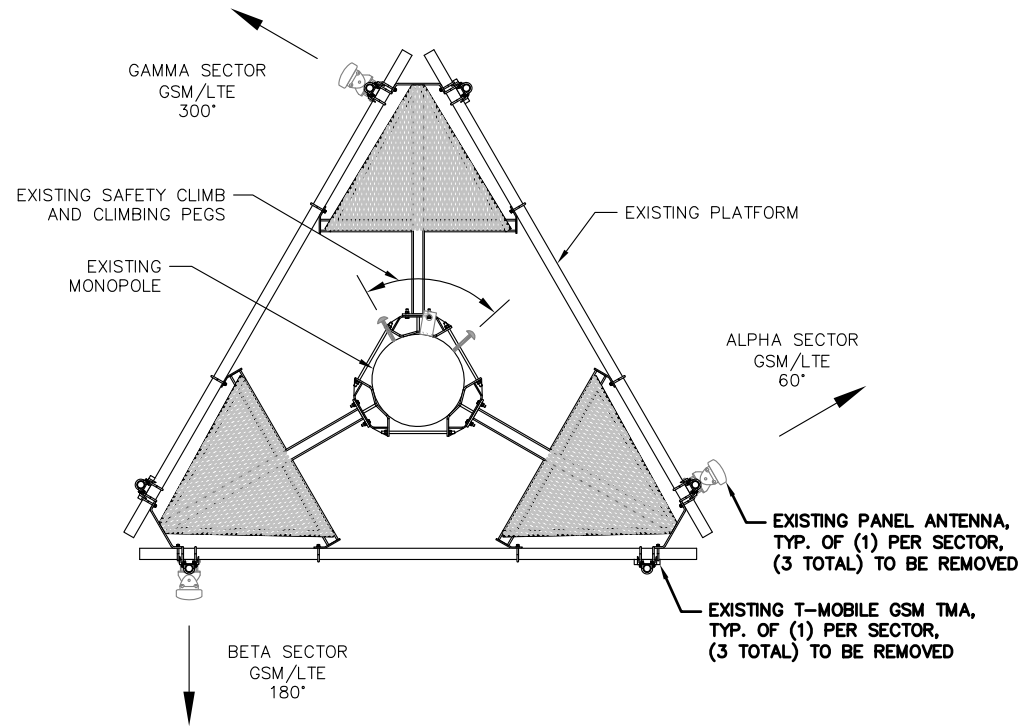
SUBMITTALS

REV.	DATE	DESCRIPTION	BY
1	10/13/15	CONSTRUCTION REVISED	JEB
0	09/21/15	ISSUED FOR CONSTRUCTION	BLM

SITE NUMBER:
 CT11525A
 SITE NAME:
 CT525 / SBA POMFRET #2
 SITE ADDRESS:
 398 POMFRET STREET
 POMFRET, CT 06258
 WINDHAM COUNTY

SHEET TITLE
 COMPOUND & ELEVATION PLAN

SHEET NUMBER
 A-1



EXISTING ANTENNA PLAN

SCALE: N.T.S.

1
A-2

ANTENNA MOUNT STRUCTURAL ASSESSMENT REQUIREMENT:

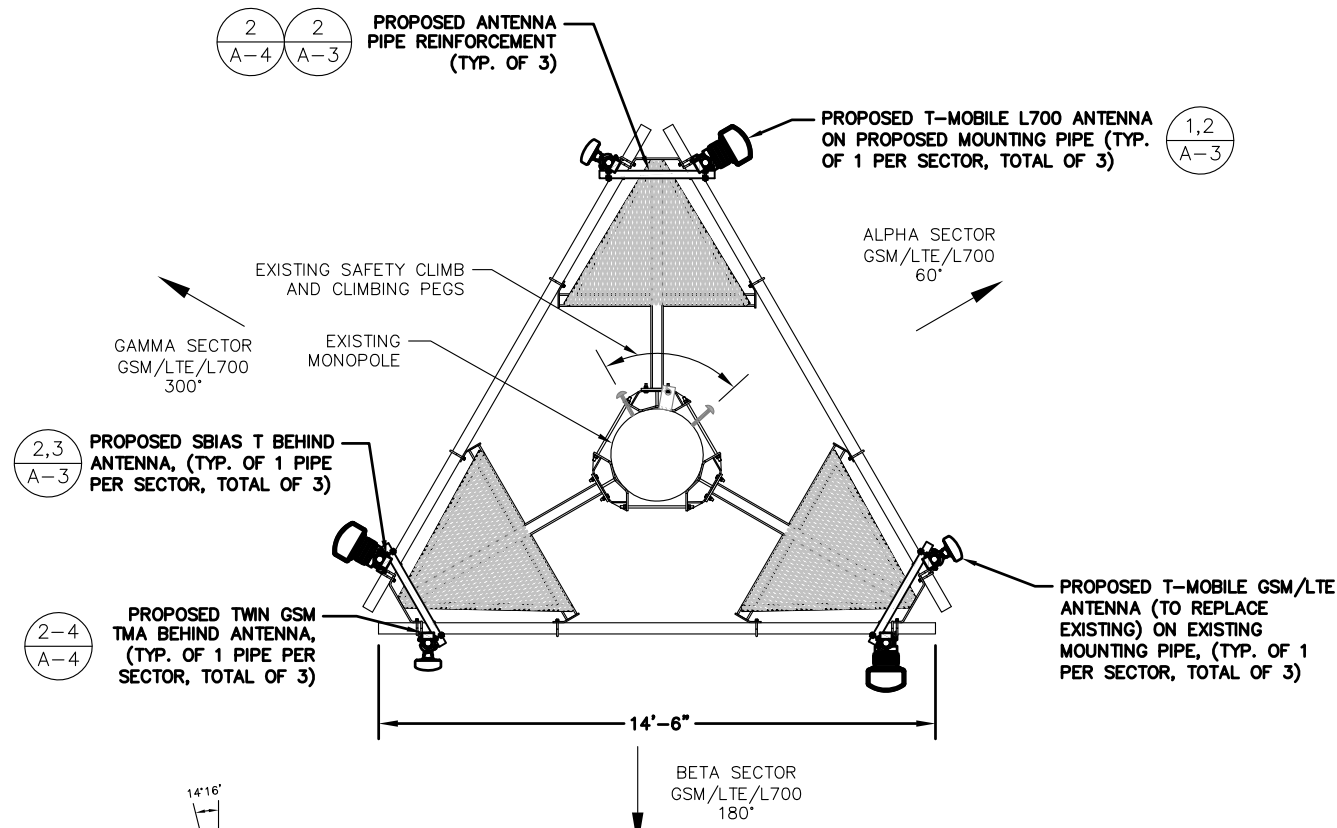
ENGINEER OF RECORD HAS MADE A VISUAL ASSESSMENT ONLY AND DETERMINED THAT THE EXISTING ANTENNA MOUNT SHALL BE REPLACED OR MODIFIED TO ACCOMMODATE ANY ADDITIONAL EQUIPMENT LOADS. STRUCTURAL DESIGNS AND DETAILS AS SHOWN HEREIN FOR STRUCTURAL MODIFICATIONS OF THE EXISTING ANTENNA MOUNT ARE PRELIMINARY ONLY AND FINAL CONSTRUCTION DETAILS ARE SUBJECT TO CHANGE PENDING THE COMPLETION OF AN ANTENNA MOUNT STRUCTURAL ASSESSMENT.

STRUCTURAL NOTES:

PRIOR TO COMMENCING CONSTRUCTION, GC SHALL REFER TO TOWER STRUCTURAL ANALYSIS PROVIDED BY SBA TO DETERMINE IF THERE ARE ANY SUPPLEMENTAL OR SPECIAL INSTALLATION REQUIREMENTS FOR TOWER TOP EQUIPMENT AND FOR CABLE BUNDLING, SHIELDING, MOUNTING, OR RELOCATION ARRANGEMENTS

NOTE:

REFER TO THE FINAL RF DATA SHEET FOR FINAL ANTENNA SETTINGS.



PROPOSED ANTENNA PLAN

SCALE: N.T.S.

2
A-2

NOTE:
ALL PIPE TO BE SCH40 GALVANIZED
ASTM A53 GRADE B (35 KSI)

2,3
A-4
PROPOSED TWIN GSM TMA BEHIND ANTENNA, (TYP. OF 1 PIPE PER SECTOR, TOTAL OF 3)

2,3
A-3
PROPOSED SBIA T BEHIND ANTENNA, (TYP. OF 1 PIPE PER SECTOR, TOTAL OF 3)

1,2
A-4
PROPOSED T-MOBILE GSM/LTE ANTENNA (TO REPLACE EXISTING) ON EXISTING MOUNTING PIPE, (TYP. OF 1 PER SECTOR, TOTAL OF 3)

PROPOSED T-MOBILE L700 ANTENNA ON PROPOSED MOUNTING PIPE (TYP. OF 1 PER SECTOR, TOTAL OF 3)

1,2
A-3

2
A-4
2
A-3
PROPOSED ANTENNA PIPE REINFORCEMENT (TYP. OF 3)

CL OF PROPOSED T-MOBILE ANTENNAS ELEV. = 147'± AGL (SBA DATABASE)

2
A-2
1,2
A-3
1,2
A-4

1,2
A-4



IMAGE SOURCE: PROTERRA 09/04/15
NOTE: ONE SECTOR SHOWN FOR CLARITY

ANTENNA PHOTO DETAIL

SCALE: N.T.S.

3
A-2



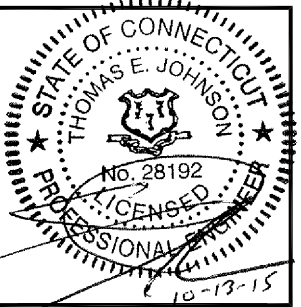
T-MOBILE NORTHEAST LLC
35 GRIFFIN ROAD SOUTH
BLOOMFIELD, CT 06002
TEL: (860) 648-1116



SBA COMMUNICATIONS CORP.
33 BOSTON POST ROAD WEST, SUITE 320
MARLBOROUGH, MA 01752 TEL: (508) 251-0720



4 Bay Road, Building A
Suite 200
Hadley, MA 01035 Ph: (413)320-4918



CHECKED BY: JMM/TEJ

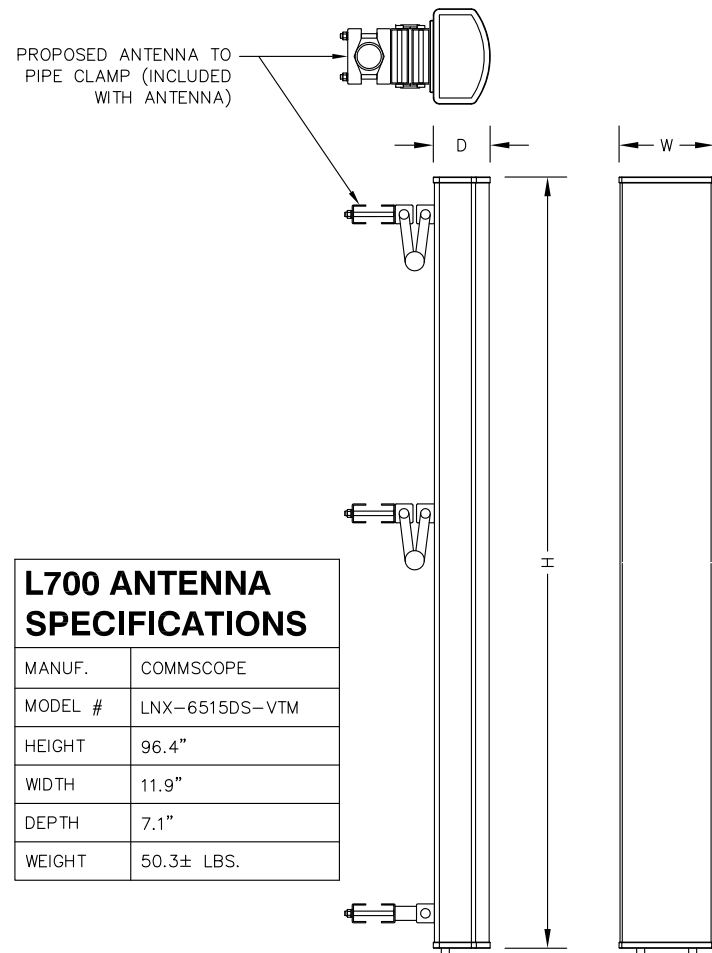
APPROVED BY: JMM/TEJ

SUBMITTALS			
REV.	DATE	DESCRIPTION	BY
1	10/13/15	CONSTRUCTION REVISED	JEB
0	09/21/15	ISSUED FOR CONSTRUCTION	BLM

SITE NUMBER:
CT11525A
SITE NAME:
CT525 / SBA POMFRET #2
SITE ADDRESS:
398 POMFRET STREET
POMFRET, CT 06258
WINDHAM COUNTY

SHEET TITLE
EXISTING & PROPOSED ANTENNA PLAN

SHEET NUMBER
A-2



L700 ANTENNA SPECIFICATIONS

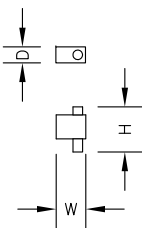
MANUF.	COMMSCOPE
MODEL #	LNx-6515DS-VTM
HEIGHT	96.4"
WIDTH	11.9"
DEPTH	7.1"
WEIGHT	50.3± LBS.

L700 ANTENNA DETAIL

SCALE: N.T.S.

1
A-3

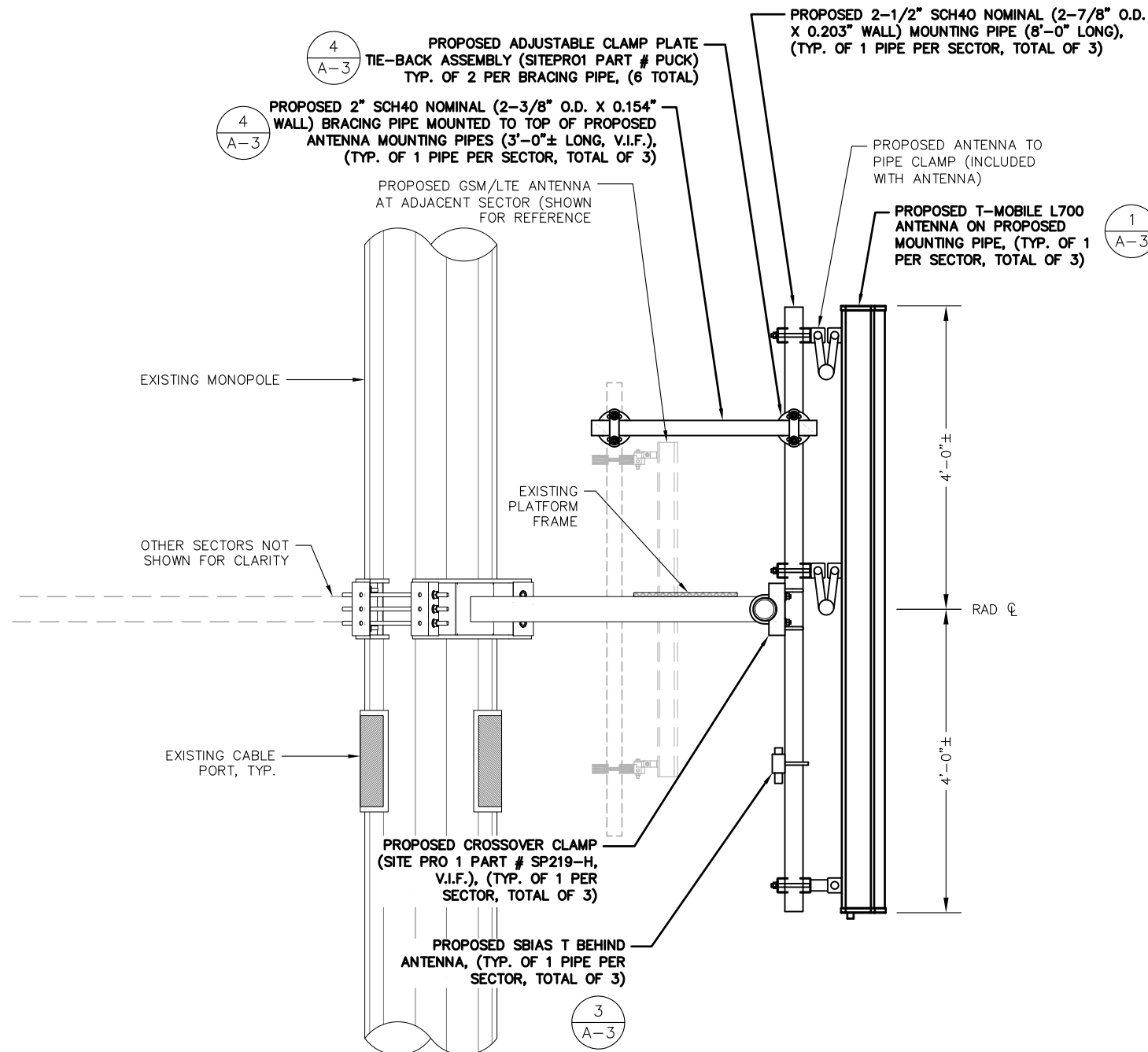
MANUF.	COMMSCOPE
MODEL #	ATSBT-TOP-FM-4G
HEIGHT	5.63"
WIDTH	3.7"
DEPTH	2.0"
WEIGHT	1.8 LBS.



SMART BIAS TEE (SBT)

SCALE: N.T.S.

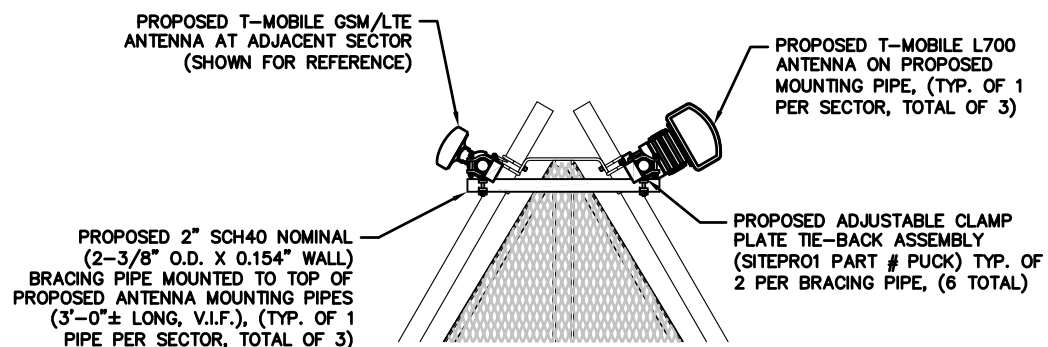
3
A-3



PROPOSED ANTENNA MOUNTING DETAIL

SCALE: N.T.S.

2
A-3



PROPOSED ANTENNA PIPE BRACE DETAIL

SCALE: N.T.S.

4
A-3

SPECIAL WORK NOTE:
VERTICALLY CENTER THE PIPE MAST AND THE PROPOSED ANTENNAS BETWEEN THE EXISTING MOUNTING RAIL

ANTENNA MOUNT STRUCTURAL ASSESSMENT REQUIREMENT:
ENGINEER OF RECORD HAS MADE A VISUAL ASSESSMENT ONLY AND DETERMINED THAT THE EXISTING ANTENNA MOUNT SHALL BE REPLACED OR MODIFIED TO ACCOMMODATE ANY ADDITIONAL EQUIPMENT LOADS. STRUCTURAL DESIGNS AND DETAILS AS SHOWN HEREIN FOR STRUCTURAL MODIFICATIONS OF THE EXISTING ANTENNA MOUNT ARE PRELIMINARY ONLY AND FINAL CONSTRUCTION DETAILS ARE SUBJECT TO CHANGE PENDING THE COMPLETION OF AN ANTENNA MOUNT STRUCTURAL ASSESSMENT.

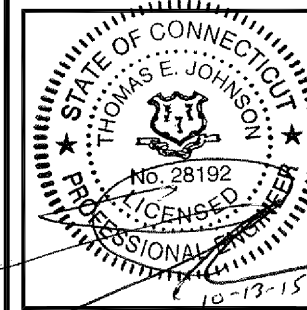
T-Mobile
T-MOBILE NORTHEAST LLC
35 GRIFFIN ROAD SOUTH
BLOOMFIELD, CT 06002
TEL: (860) 648-1116

SBA

SBA COMMUNICATIONS CORP.
33 BOSTON POST ROAD WEST, SUITE 320
MARLBOROUGH, MA 01752 TEL: (508) 251-0720

ProTerra
DESIGN GROUP, LLC

4 Bay Road, Building A
Suite 200
Hadley, MA 01035 Ph: (413) 320-4918



CHECKED BY: JMM/TEJ

APPROVED BY: JMM/TEJ

SUBMITTALS			
REV.	DATE	DESCRIPTION	BY
1	10/13/15	CONSTRUCTION REVISED	JEB
0	09/21/15	ISSUED FOR CONSTRUCTION	BLM

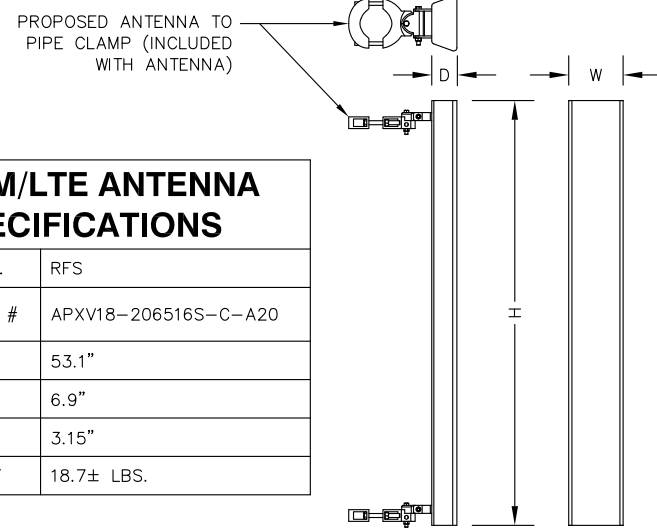
SITE NUMBER:
CT11525A
SITE NAME:
CT525 / SBA POMFRET #2
SITE ADDRESS:
398 POMFRET STREET
POMFRET, CT 06258
WINDHAM COUNTY

SHEET TITLE
DETAILS

SHEET NUMBER
A-3

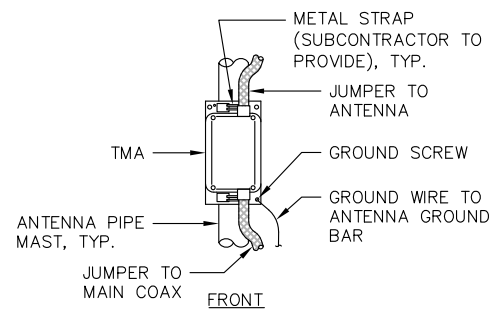
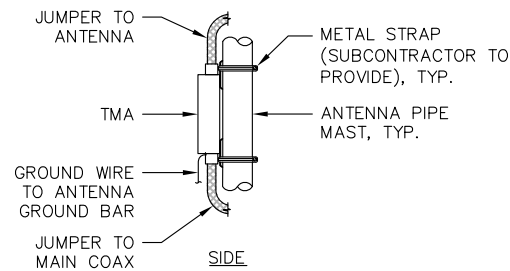
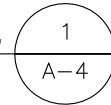
GSM/LTE ANTENNA SPECIFICATIONS

MANUF.	RFS
MODEL #	APXV18-206516S-C-A20
HEIGHT	53.1"
WIDTH	6.9"
DEPTH	3.15"
WEIGHT	18.7± LBS.



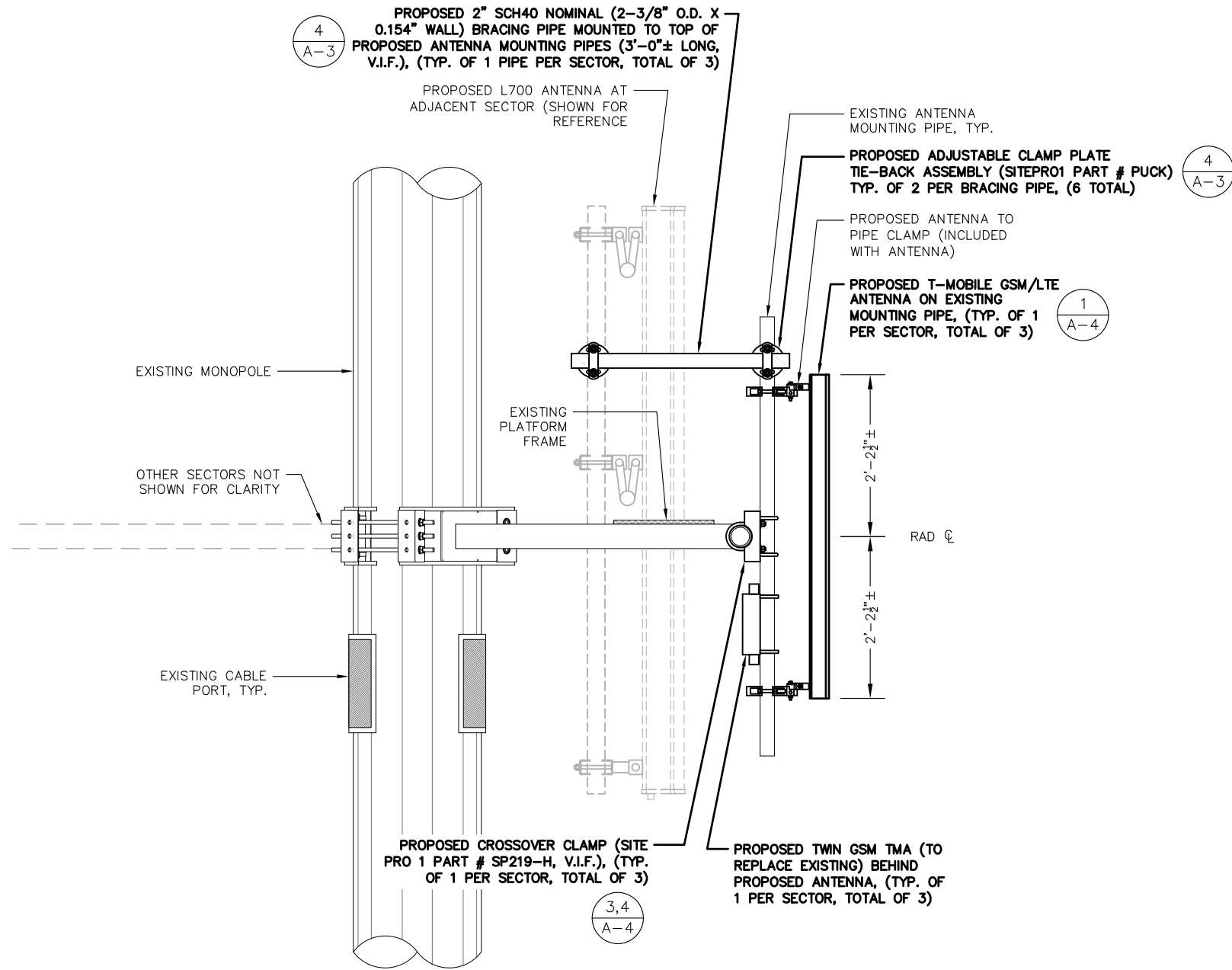
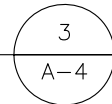
GSM/LTE ANTENNA DETAIL

SCALE: N.T.S.



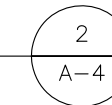
TMA MOUNTING DETAIL

SCALE: N.T.S.



PROPOSED GSM/LTE ANTENNA MOUNTING DETAIL

SCALE: N.T.S.

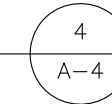
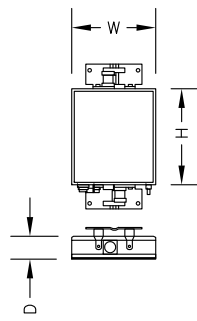


TWIN GSM TMA SPECIFICATIONS

MANUF.	RFS
MODEL #	ATMAA1412D-1A20
HEIGHT	12"
WIDTH	10"
DEPTH	4"
WEIGHT	13 LBS.

TWIN GSM TMA

SCALE: N.T.S.



SPECIAL WORK NOTE:

VERTICALLY CENTER THE PIPE MAST AND THE PROPOSED ANTENNAS BETWEEN THE EXISTING MOUNTING RAIL

ANTENNA MOUNT STRUCTURAL ASSESSMENT REQUIREMENT:

ENGINEER OF RECORD HAS MADE A VISUAL ASSESSMENT ONLY AND DETERMINED THAT THE EXISTING ANTENNA MOUNT SHALL BE REPLACED OR MODIFIED TO ACCOMMODATE ANY ADDITIONAL EQUIPMENT LOADS. STRUCTURAL DESIGNS AND DETAILS AS SHOWN HEREIN FOR STRUCTURAL MODIFICATIONS OF THE EXISTING ANTENNA MOUNT ARE PRELIMINARY ONLY AND FINAL CONSTRUCTION DETAILS ARE SUBJECT TO CHANGE PENDING THE COMPLETION OF AN ANTENNA MOUNT STRUCTURAL ASSESSMENT.



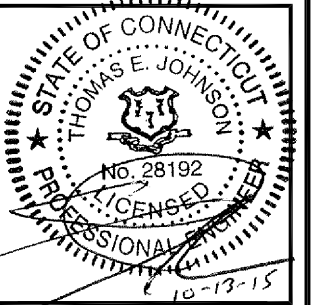
T-MOBILE NORTHEAST LLC
35 GRIFFIN ROAD SOUTH
BLOOMFIELD, CT 06002
TEL: (860) 648-1116



SBA COMMUNICATIONS CORP.
33 BOSTON POST ROAD WEST, SUITE 320
MARLBOROUGH, MA 01752 TEL: (508) 251-0720



4 Bay Road, Building A
Suite 200
Hadley, MA 01035 Ph: (413)320-4918



CHECKED BY: JMM/TEJ

APPROVED BY: JMM/TEJ

SUBMITTALS

REV.	DATE	DESCRIPTION	BY
1	10/13/15	CONSTRUCTION REVISED	JEB
0	09/21/15	ISSUED FOR CONSTRUCTION	BLM

SITE NUMBER:

CT11525A

SITE NAME:

CT525 / SBA POMFRET #2

SITE ADDRESS:

398 POMFRET STREET
POMFRET, CT 06258
WINDHAM COUNTY

SHEET TITLE

DETAILS

SHEET NUMBER

A-4



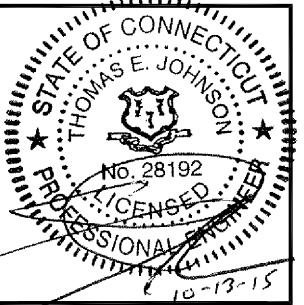
T-MOBILE NORTHEAST LLC
 35 GRIFFIN ROAD SOUTH
 BLOOMFIELD, CT 06002
 TEL: (860) 648-1116



SBA COMMUNICATIONS CORP.
 33 BOSTON POST ROAD WEST, SUITE 320
 MARLBOROUGH, MA 01752 TEL: (508) 251-0720



4 Bay Road, Building A
 Suite 200
 Hadley, MA 01035 Ph: (413) 320-4918



CHECKED BY: JMM/TEJ

APPROVED BY: JMM/TEJ

SUBMITTALS

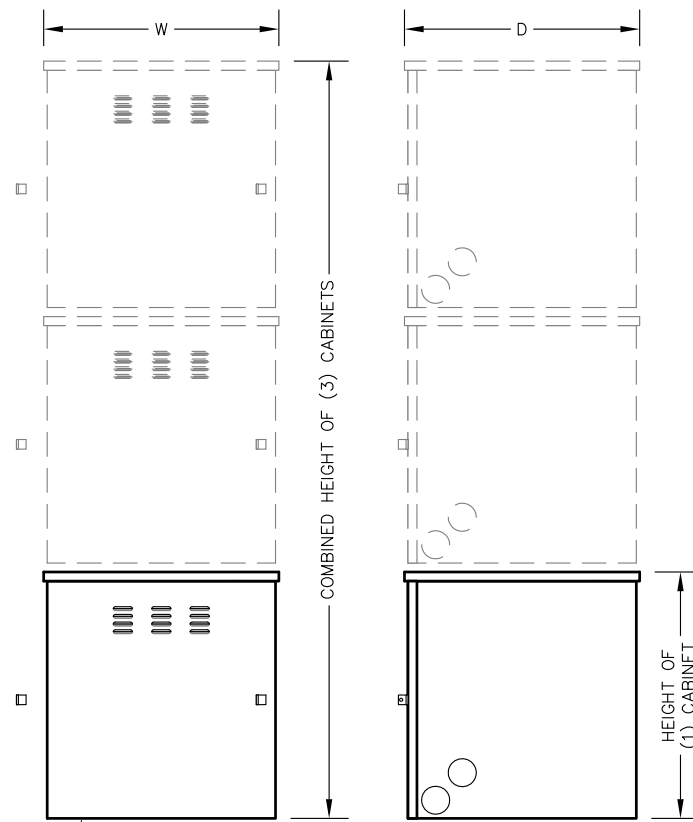
REV.	DATE	DESCRIPTION	BY
1	10/13/15	CONSTRUCTION REVISED	JEB
0	09/21/15	ISSUED FOR CONSTRUCTION	BLM

SITE NUMBER:
CT11525A
 SITE NAME:
CT525 / SBA POMFRET #2
 SITE ADDRESS:
 398 POMFRET STREET
 POMFRET, CT 06258
 WINDHAM COUNTY

SHEET TITLE
 DETAILS

SHEET NUMBER
 A-5

BBU SPECIFICATIONS	
MANUF.	MFS DATA SERVICES
MODEL #	DUBBM-2ALM
HEIGHT (1) CABINET	29.67"
HEIGHT (3) CABINETS	89.01"
WIDTH	28.54"
DEPTH	28.54"

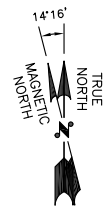
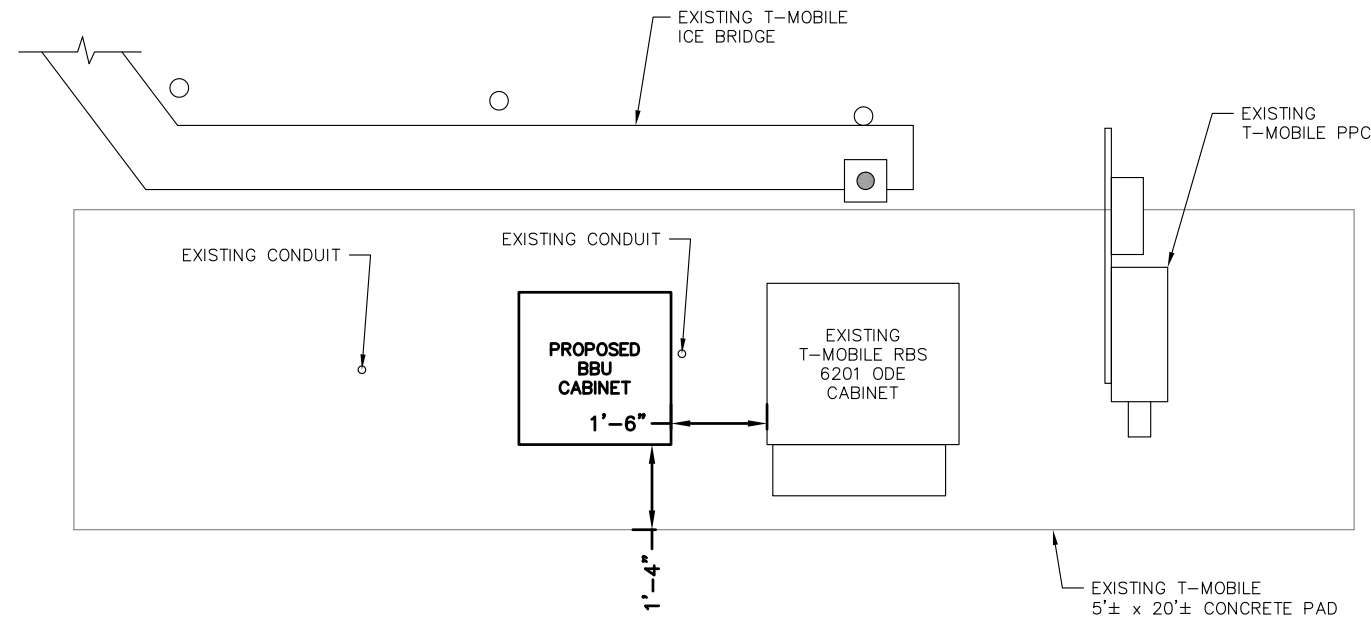


HILTI HDI 1/2" x 2" MINIMUM DEPTH SS 303 DROP-IN ANCHORS, (TYP. OF 4 MINIMUM IN SEISMIC ZONES 1-3)

NOTE:
 MFS DATA SERVICES BBU CABINET, MODEL DUBBM-2ALM (STACKABLE - 3 TOTAL PROPOSED)

SPECIAL WORK NOTE:
 DO NOT BLOCK CABINET DOOR SWING WITH PROPOSED BBU CABINET.

SPECIAL WORK NOTE:
 MAINTAIN MINIMUM NEC-COMPLIANT WORKSPACE CLEARANCE 30" WIDE, 36" DEEP, 6'-6" HEIGHT



PROPOSED BBU CABINET DETAIL

SCALE: N.T.S.

1
 A-5