

EAST > North East > New England > New England West > HAMDEN CT - A

- Laredo, Jaime - jaime.laredo@verizonwireless.com - 06/07/2019 14:31:01

Project Detail		Location Information	
Site Type		Siterra Site ID#	
Carrier Aggregation	false	Site Name	HAMDEN CT - A
MPT Id	1330003	Siterra SR#	
eCIP-0	false	E-NodeB ID#	064001
Project Name	MANUAL Initial Build ENTRY - 2606913	PSLC#	469864
RFDS Project ID	914615	Switch Name	
Project ID	15028215	Tower Owner	
Site Traker Project ID		Tower Type	Monopole
RFDS Project Scope	RELO Use BSAMNT special mount for each pair of antennas Rev1: Added 850 CDMA, replaced RRHs with Samsung dual band radio	Street Address	796 Woodin Street
		City	Hamden
		State	CT
		Zip Code	06518
		County	New Haven
		Latitude	41.34983 / 41° 20' 59.388" " N
		Longitude	-72.96267 / 72° 57' 45.612" " W

Antenna Summary

Added Antennas														
700 LTE	850 CDM A	850 LTE	1900 CDM A	1900 LTE	2100 LTE	Make	Model	Centerline	Tip Height	Azimuth	RET	4xRx	Inst. Type	QTY
	YES					ANDREW	JAHH-45C-R3B (850 CDMA)	120	124	50(D1),230(D3),140(D2)	true	false	PHYSICAL	3
YES		YES		YES	YES	ANDREW	JAHH-45C-R3B (LTE)	120	124	140(D2),50(D1),230(D3),50(D1),230(D3),140(D2)	true	true	PHYSICAL	6

Removed Antennas														
700 LTE	850 CDM A	850 LTE	1900 CDM A	1900 LTE	2100 LTE	Make	Model	Centerline	Tip Height	Azimuth	RET	4xRx	Inst. Type	QTY

Retained Antennas														
700 LTE	850 CDM A	850 LTE	1900 CDM A	1900 LTE	2100 LTE	Make	Model	Centerline	Tip Height	Azimuth	RET	4xRx	Inst. Type	QTY

Added: 9	Removed: 0	Retained: 0
----------	------------	-------------

Equipment Summary

Added Non Antennas													
Equipment Type	700 LTE	850 CDMA	850 LTE	1900 CDMA	1900 LTE	2100 LTE	Location	Make	Model	Cable Length	Cable Size	Inst. Type	Quantity
OVP Box							Tower		12x24 OVP			PHYSICAL	1
Hybrid Cable							Tower		12x24 Hybrid Cable			PHYSICAL	1
Mount							Tower	COMMSCOPE	BSAMNT-SBS-2-3			PHYSICAL	3
RRU					YES	YES	Tower	Samsung	B2/B66A RRH-BR049 (RFV01U-D1A)			PHYSICAL	3
RRU	YES		YES				Tower	Samsung	B5/B13 RRH-BR04C (RFV01U-D2A)			PHYSICAL	3
Removed Non Antennas													
Equipment Type	700 LTE	850 CDMA	850 LTE	1900 CDMA	1900 LTE	2100 LTE	Location	Make	Model	Cable Length	Cable Size	Inst. Type	Quantity
Retained Non Antennas													
Equipment Type	700 LTE	850 CDMA	850 LTE	1900 CDMA	1900 LTE	2100 LTE	Location	Make	Model	Cable Length	Cable Size	Inst. Type	Quantity
Coaxial Cables							Tower				1 5/8"	PHYSICAL	6

Services

700 MHZ LTE

	Current Version:	Proposed Version:		
		0002		
		D1	D2	D3
Sector		50	140	230
Azimuth		064001	064001	064001
Cell/ENode B ID		JAHH-45C-R3B- PRELIMINARY_P1_ 45_5DT_750MH(432832)	JAHH-45C-R3B- PRELIMINARY_P1_ 45_7DT_750MH(432834)	JAHH-45C-R3B- PRELIMINARY_P1_ 45_10DT_750M(432827)
Antenna Model		ANDREW	ANDREW	ANDREW
Antenna Make		120	120	120
Centerline(Ft)		0	0	0
Mechanical DT(Deg.)		5	7	10
Electrical DT		124	124	124
Tip Height				
TMA make				
TMA model				
RRU make		Samsung	Samsung	Samsung
RRU model		B5/B13 RRH-BR04C (RFV01U-D2A)	B5/B13 RRH-BR04C (RFV01U-D2A)	B5/B13 RRH-BR04C (RFV01U-D2A)
# of Tx, Rx Lines		4,4	4,4	4,4
Position				

2100 MHZ LTE

	Current Version:	Proposed Version:		
		0002		
Sector		D1	D2	D3
Azimuth		50	140	230
Cell/ENode B ID		064001	064001	064001
Antenna Model		JAHH-45C-R3B- PRELIMINARY_P5_ 45_3DT_2100M (432855)	JAHH-45C-R3B- PRELIMINARY_P5_ 45_4DT_2100M (432857)	JAHH-45C-R3B- PRELIMINARY_P7_ 45_8DT_2100M (432883)
Antenna Make		ANDREW	ANDREW	ANDREW
Centerline(Ft)		120	120	120
Mechanical DT(Deg.)		0	0	0
Electrical DT		3	4	8
Tip Height		124	124	124
TMA make				
TMA model				
RRU make		Samsung	Samsung	Samsung
RRU model		B2/B66A RRH-BR049 (RFV01U-D1A)	B2/B66A RRH-BR049 (RFV01U-D1A)	B2/B66A RRH-BR049 (RFV01U-D1A)
# of Tx, Rx Lines		4,4	4,4	4,4
Position				

1900 MHZ LTE

	Current Version:	Proposed Version:		
		0002		
Sector		D1	D2	D3
Azimuth		50	140	230
Cell/ENode B ID		064001	064001	064001
Antenna Model		JAHH-45C-R3B- PRELIMINARY_P5_ 45_3DT_1900M (432854)	JAHH-45C-R3B- PRELIMINARY_P5_ 45_4DT_1900M (432856)	JAHH-45C-R3B- PRELIMINARY_P7_ 45_8DT_1900M (432882)
Antenna Make		ANDREW	ANDREW	ANDREW
Centerline(Ft)		120	120	120
Mechanical DT(Deg.)		0	0	0
Electrical DT		3	4	8
Tip Height		124	124	124
TMA make				
TMA model				
RRU make		Samsung	Samsung	Samsung
RRU model		B2/B66A RRH-BR049 (RFV01U-D1A)	B2/B66A RRH-BR049 (RFV01U-D1A)	B2/B66A RRH-BR049 (RFV01U-D1A)
# of Tx, Rx Lines		4,4	4,4	4,4
Position				

850 MHZ CDMA

	Current Version:	Proposed Version:		
		0002		
Sector		D1	D2	D3
Azimuth		50	140	230
Cell/ENode B ID				
Antenna Model		JAHH-45C-R3B- PRELIMINARY_P3_ 45_5DT_850MH (432843)	JAHH-45C-R3B- PRELIMINARY_P3_ 45_7DT_850MH (432845)	JAHH-45C-R3B- PRELIMINARY_P3_ 45_10DT_850M (432838)
Antenna Make		ANDREW	ANDREW	ANDREW
Centerline(Ft)		120	120	120
Mechanical DT(Deg.)		0	2	0
Electrical DT		5	7	10
Tip Height		124	124	124
TMA make				
TMA model				
RRU make				
RRU model				
# of Tx, Rx Lines				
Position				

850 MHZ LTE

	Current Version:	Proposed Version:		
		0002		
Sector		D1	D2	D3
Azimuth		50	140	230
Cell/ENode B ID		064001	064001	064001
Antenna Model		JAHH-45C-R3B- PRELIMINARY_P1_ 45_5DT_750MH (432832)	JAHH-45C-R3B- PRELIMINARY_P1_ 45_7DT_750MH (432834)	JAHH-45C-R3B- PRELIMINARY_P1_ 45_10DT_750M (432827)
Antenna Make		ANDREW	ANDREW	ANDREW
Centerline(Ft)		120	120	120
Mechanical DT(Deg.)		0	0	0
Electrical DT		5	7	10
Tip Height		124	124	124
TMA make				
TMA model				
RRU make		Samsung	Samsung	Samsung
RRU model		B5/B13 RRH-BR04C (RFV01U-D2A)	B5/B13 RRH-BR04C (RFV01U-D2A)	B5/B13 RRH-BR04C (RFV01U-D2A)
# of Tx, Rx Lines		4,4	4,4	4,4
Position				

Service Comments

Callsigns Per Antenna - Proposed

Sector	Make	Model	Centerline	Tip Height	Azimuth (TN)	Elec. Tilt	Mech. Tilt	Gain	Horiz BW	Regulatory Power	700 Callsigns	850 Callsigns	1900 Callsigns	2100 Callsigns	28 GHz Callsigns	31 GHz Callsigns	39 GHz Callsigns
D1	ANDREW	JAHH-45C-R3B-PRELIMINARY_P3_45_5DT_850MH (432843)	120ft/36.58m	124ft/37.8m	50	5	0	16	43.25	779.83		KNKA313					
D1	ANDREW	JAHH-45C-R3B-PRELIMINARY_P3_45_5DT_850MH (432843)	120ft/36.58m	124ft/37.8m	50	5	0	16	43.25	549.58		KNKA313					
D3	ANDREW	JAHH-45C-R3B-PRELIMINARY_P7_45_8DT_1900M (432882)	120ft/36.58m	124ft/37.8m	230	8	0	17.171	43.5	369.71			KNLH262,WQEM953				
D3	ANDREW	JAHH-45C-R3B-PRELIMINARY_P1_45_10DT_750M (432827)	120ft/36.58m	124ft/37.8m	230	10	0	15.174	47	454.36		KNKA313					
D1	ANDREW	JAHH-45C-R3B-PRELIMINARY_P5_45_3DT_2100M (432855)	120ft/36.58m	124ft/37.8m	50	3	0	18.329	41.5	241.34				WQGA906,WQGB280			
D2	ANDREW	JAHH-45C-R3B-PRELIMINARY_P5_45_4DT_2100M (432857)	120ft/36.58m	124ft/37.8m	140	4	0	18.313	41.75	240.45				WQGA906,WQGB280			

D3	ANDRE W	JAHH-45C- R3B- PRELIMINAR Y_P7_ 45_8DT_2100 M(432883)	120ft/36.5 8m	124ft/37.8 m	230	8	0	18.2 730 01	40.7 5	238.25				WQGA90 6,WQGB2 80			
D1	ANDRE W	JAHH-45C- R3B- PRELIMINAR Y_P1_ 45_5DT_750M H(432832)	120ft/36.5 8m	124ft/37.8 m	50	5	0	15.4	47	149.88	WQJQ689						
D2	ANDRE W	JAHH-45C- R3B- PRELIMINAR Y_P1_ 45_7DT_750M H(432834)	120ft/36.5 8m	124ft/37.8 m	140	7	0	15.3 8	46.7 5	149.2	WQJQ689						
D3	ANDRE W	JAHH-45C- R3B- PRELIMINAR Y_P1_ 45_10DT_750 M(432827)	120ft/36.5 8m	124ft/37.8 m	230	10	0	15.1 74	47	142.28	WQJQ689						
D2	ANDRE W	JAHH-45C- R3B- PRELIMINAR Y_P3_ 45_7DT_850M H(432845)	120ft/36.5 8m	124ft/37.8 m	140	7	2	15.9 9	43.2 5	776.25		KNKA31 3					
D2	ANDRE W	JAHH-45C- R3B- PRELIMINAR Y_P3_ 45_7DT_850M H(432845)	120ft/36.5 8m	124ft/37.8 m	140	7	2	15.9 9	43.2 5	547.05		KNKA31 3					
D3	ANDRE W	JAHH-45C- R3B- PRELIMINAR Y_P3_ 45_10DT_850 M(432838)	120ft/36.5 8m	124ft/37.8 m	230	10	0	15.9 12	43.7 5	773.04		KNKA31 3					
D3	ANDRE W	JAHH-45C- R3B- PRELIMINAR Y_P3_ 45_10DT_850 M(432838)	120ft/36.5 8m	124ft/37.8 m	230	10	0	15.9 12	43.7 5	544.79		KNKA31 3					

D1	ANDREW	JAHH-45C-R3B-PRELIMINARY_P5_45_3DT_1900M (432854)	120ft/36.58m	124ft/37.8m	50	3	0	17.582001	42.75	406.4			KNLH262,WQEM953				
D2	ANDREW	JAHH-45C-R3B-PRELIMINARY_P5_45_4DT_1900M (432856)	120ft/36.58m	124ft/37.8m	140	4	0	17.525999	43	401.2			KNLH262,WQEM953				
D1	ANDREW	JAHH-45C-R3B-PRELIMINARY_P1_45_5DT_750MH (432832)	120ft/36.58m	124ft/37.8m	50	5	0	15.4	47	478.63			KNKA313				
D2	ANDREW	JAHH-45C-R3B-PRELIMINARY_P1_45_7DT_750MH (432834)	120ft/36.58m	124ft/37.8m	140	7	0	15.38	46.75	476.43			KNKA313				

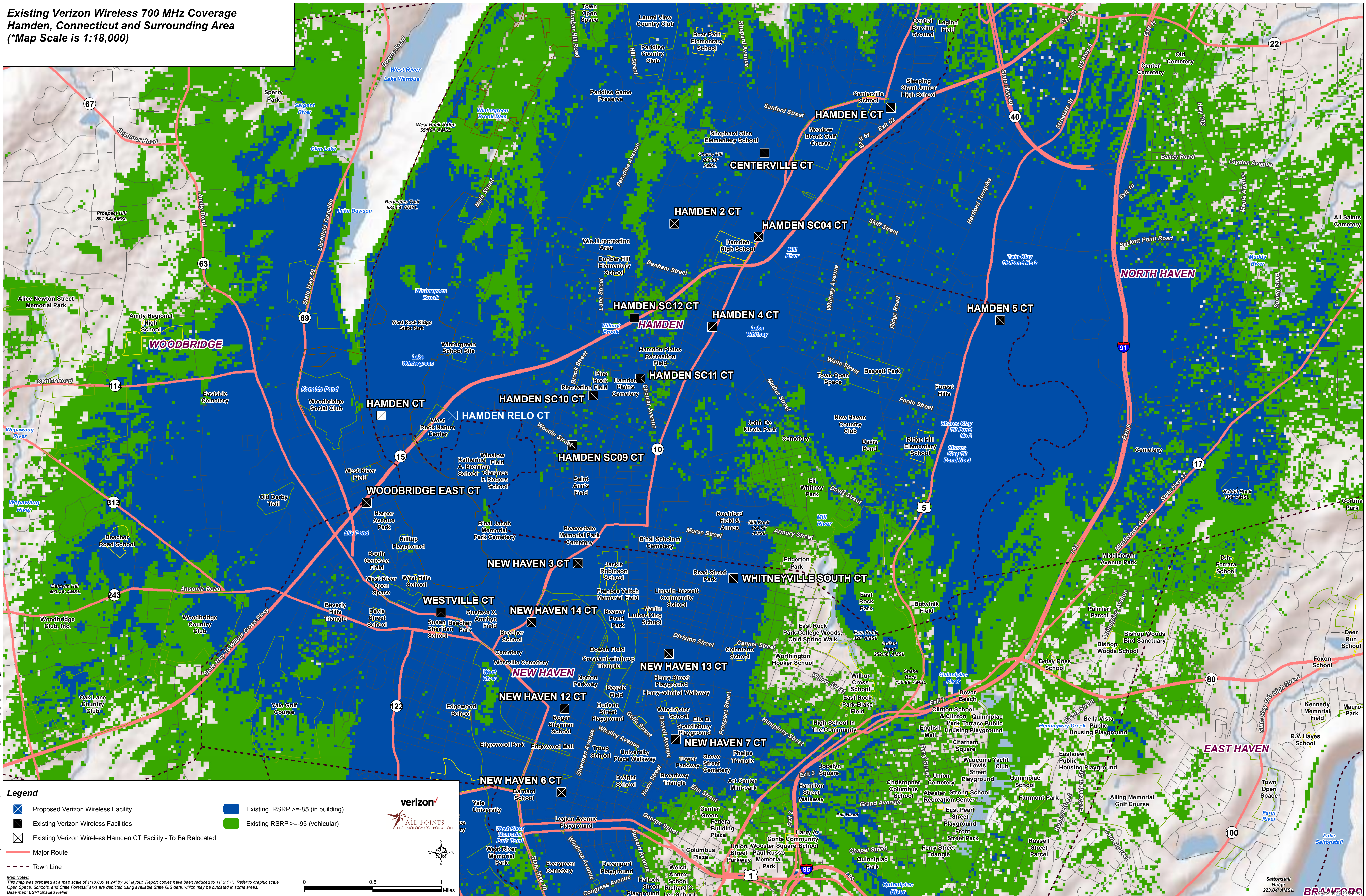
Callsigns

Callsigns	Market	Radio Code	Market Number	Block	State	County	Licensee Name	Wholly Owned	Total MHZ	Freq Range 1	Freq Range 2	Freq Range 3	Freq Range 4	Regulatory Power	Threshold (W)	POPs/Sq Mi	Status	Project Action
KNKA313	<i>New Haven-West Haven-Waterbury-Meriden, CT</i>	CL	CMA049	A	CT	New Haven	Cellco Partnership	Yes	25.000	824.000-835.000	869.000-880.000	845.000-846.500	890.000-891.500	454.36	500	1426.7	Active	Added
KNLH262	<i>New Haven-Waterbury-Meriden, CT</i>	CW	BTA318	F	CT	New Haven	Cellco Partnership	Yes	10.000	1890.000-1895.000	1970.000-1975.000	.000-.000	.000-.000	406.4	1640	1426.7	Active	Added
WPLM399	New Haven-Waterbury-Meriden, CT	LD	BTA318	B	CT	New Haven	Cellco Partnership	Yes	150.000	3100.000-31075.000	31225.000-31300.000	.000-.000	.000-.000			1426.7	Active	
WPOH945	New Haven-Waterbury-Meriden, CT	LD	BTA318	A	CT	New Haven	Cellco Partnership	Yes	300.000	29100.000-29250.000	31075.000-31225.000	.000-.000	.000-.000			1426.7	Active	
WQEM953	<i>New Haven-Waterbury-Meriden, CT</i>	CW	BTA318	C	CT	New Haven	Cellco Partnership	Yes	10.000	1895.000-1900.000	1975.000-1980.000	.000-.000	.000-.000	406.4	1640	1426.7	Active	Added
WQGA906	<i>New York-No. New Jer.-Long Island, NY-NJ-CT-PA-MA-</i>	AW	BEA010	B	CT	New Haven	Cellco Partnership	Yes	20.000	1720.000-1730.000	2120.000-2130.000	.000-.000	.000-.000	241.34	1640	1426.7	Active	Added
WQGB280	<i>New Haven-West Haven-Waterbury-Meriden, CT</i>	AW	CMA049	A	CT	New Haven	Cellco Partnership	Yes	20.000	1710.000-1720.000	2110.000-2120.000	.000-.000	.000-.000	241.34	1640	1426.7	Active	Added
WQJQ689	<i>Northeast</i>	WU	REA001	C	CT	New Haven	Cellco Partnership	Yes	22.000	746.000-757.000	776.000-787.000	.000-.000	.000-.000	149.88	1000	1426.7	Active	Added
WRBA734	New Haven-Waterbury-Meriden, CT	UU	BTA318	L1	CT	New Haven	Cellco Partnership	Yes	300.000	27600.000-27875.000	27900.000-27925.000	.000-.000	.000-.000			1426.7	Active	

WRBA735	New Haven-Waterbury-Meriden, CT	UU	BTA318	L2	CT	New Haven	Cellco Partnership	Yes	300.000	27925.000-27950.000	28050.000-28325.000	.000-.000	.000-.000			1426.7	Active	
WRBD571	New York, NY	UU	PEA001	2-A	CT	New Haven	Straight Path Spectrum, LLC	Yes	.000	.000-.000	.000-.000	.000-.000	.000-.000			.0	Active	
WRBD572	New York, NY	UU	PEA001	2-B	CT	New Haven	Straight Path Spectrum, LLC	Yes	.000	.000-.000	.000-.000	.000-.000	.000-.000			.0	Active	
WRBE444	New York, NY	UU	PEA001	5-A	CT	New Haven	Straight Path Spectrum, LLC	Yes	50.000	38800.000-38850.000	.000-.000	.000-.000	.000-.000			.0	Active	
WRBE445	New York, NY	UU	PEA001	5-B	CT	New Haven	Straight Path Spectrum, LLC	Yes	50.000	39500.000-39550.000	.000-.000	.000-.000	.000-.000			.0	Active	
WRBE704	New York, NY	UU	PEA001	6-A	CT	New Haven	Straight Path Spectrum, LLC	Yes	.000	.000-.000	.000-.000	.000-.000	.000-.000			.0	Active	
WRBE705	New York, NY	UU	PEA001	6-B	CT	New Haven	Straight Path Spectrum, LLC	Yes	.000	.000-.000	.000-.000	.000-.000	.000-.000			.0	Active	
WRBE864	New York, NY	UU	PEA001	7-A	CT	New Haven	Straight Path Spectrum, LLC	Yes	50.000	38900.000-38950.000	.000-.000	.000-.000	.000-.000			.0	Active	
WRBE865	New York, NY	UU	PEA001	7-B	CT	New Haven	Straight Path Spectrum, LLC	Yes	50.000	39600.000-39650.000	.000-.000	.000-.000	.000-.000			.0	Active	
WRBF500	New York, NY	UU	PEA001	9-A	CT	New Haven	Straight Path Spectrum, LLC	Yes	50.000	39000.000-39050.000	.000-.000	.000-.000	.000-.000			.0	Active	
WRBF501	New York, NY	UU	PEA001	9-B	CT	New Haven	Straight Path Spectrum, LLC	Yes	50.000	39700.000-39750.000	.000-.000	.000-.000	.000-.000			.0	Active	
WRBF792	New York, NY	UU	PEA001	10-A	CT	New Haven	Straight Path Spectrum, LLC	Yes	50.000	39050.000-39100.000	.000-.000	.000-.000	.000-.000			.0	Active	
WRBF793	New York, NY	UU	PEA001	10-B	CT	New Haven	Straight Path Spectrum, LLC	Yes	50.000	39750.000-39800.000	.000-.000	.000-.000	.000-.000			.0	Active	

WRBF968	New York, NY	UU	PEA001	11-A	CT	New Haven	Straight Path Spectrum, LLC	Yes	50.000	39100.000-39150.000	.000-.000	.000-.000	.000-.000			.0	Active	
WRBF969	New York, NY	UU	PEA001	11-B	CT	New Haven	Straight Path Spectrum, LLC	Yes	50.000	39800.000-39850.000	.000-.000	.000-.000	.000-.000			.0	Active	
WRDG500	New York, NY	UU	PEA001	S2	CT	New Haven	Cellco Partnership	Yes	400.000	37800.000-38200.000	.000-.000	.000-.000	.000-.000			.0	Active	

**Existing Verizon Wireless 700 MHz Coverage
Hamden, Connecticut and Surrounding Area
(*Map Scale is 1:18,000)**



Legend

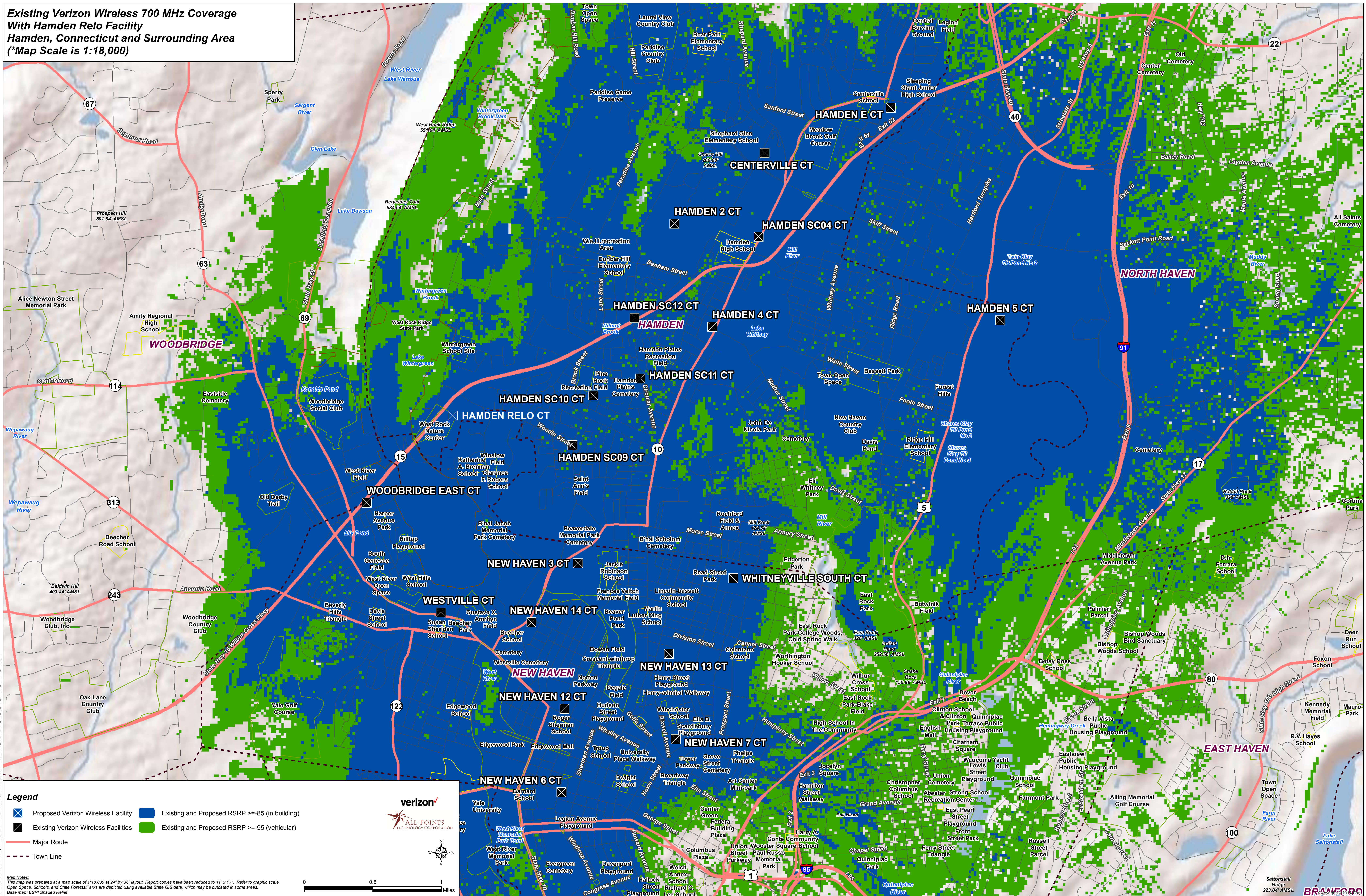
- Proposed Verizon Wireless Facility
- Existing RSRP >= -85 (in building)
- Existing RSRP >= -95 (vehicular)
- Existing Verizon Wireless Facilities
- Existing Verizon Wireless Hamden CT Facility - To Be Relocated
- Major Route
- Town Line

Map Notes:
This map was prepared at a map scale of 1:18,000 at 24" by 36" layout. Report copies have been reduced to 11" x 17". Refer to graphic scale.
Open Spaces, Schools and State Forests/Parks are depicted using available State GIS data, which may be outdated in some areas.
Base map: ESRI Shaded Relief

verizon
ALL-POINTS
TECHNOLOGY CORPORATION

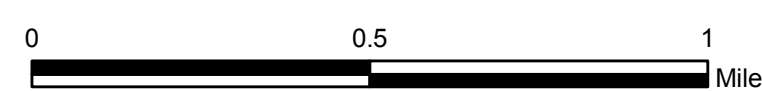
0 0.5 1 Miles

**Existing Verizon Wireless 700 MHz Coverage
With Hamden Relo Facility
Hamden, Connecticut and Surrounding Area
(*Map Scale is 1:18,000)**

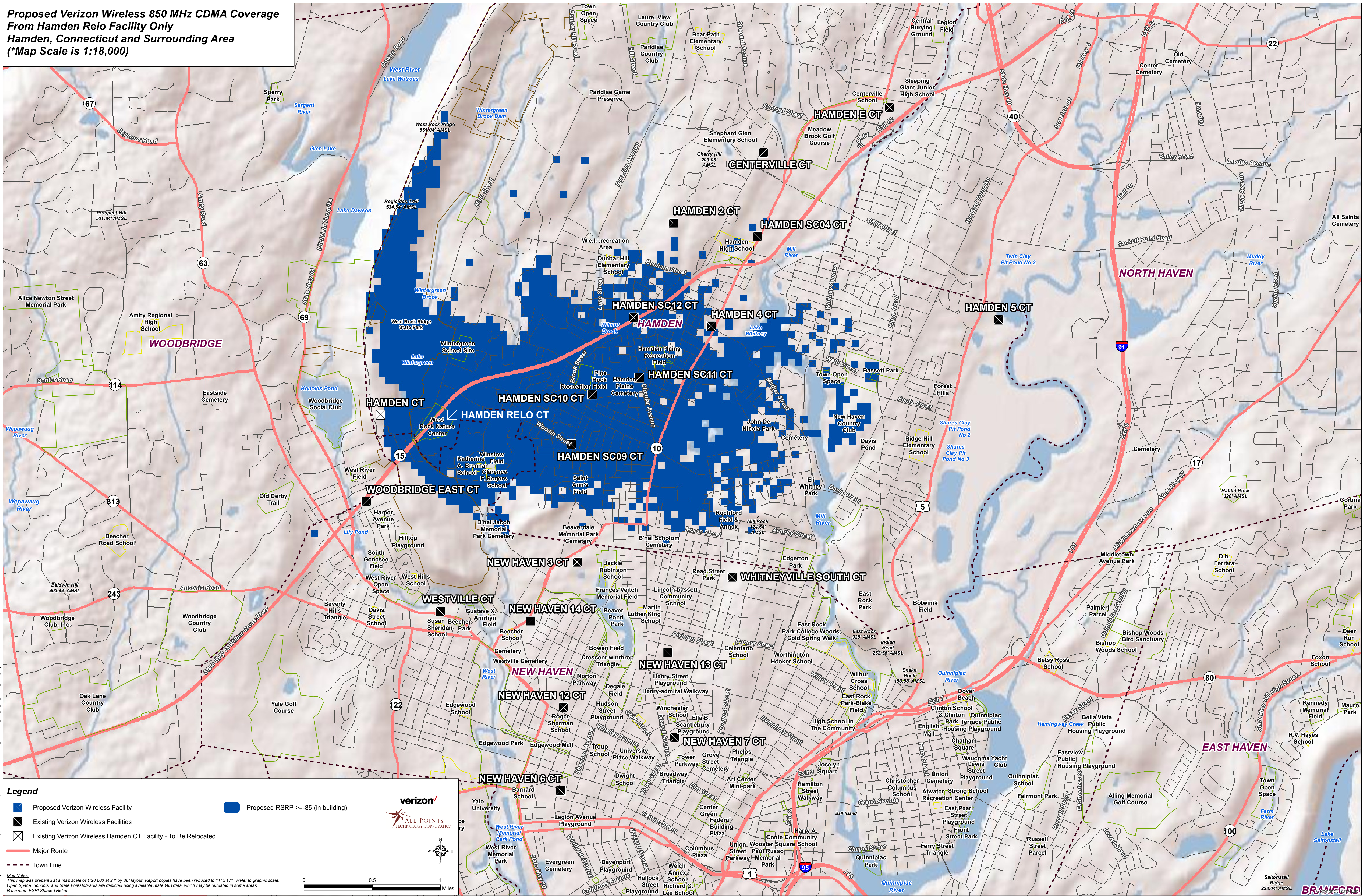


- Legend**
- Proposed Verizon Wireless Facility
 - Existing and Proposed RSRP >= -85 (in building)
 - Existing Verizon Wireless Facilities
 - Existing and Proposed RSRP >= -95 (vehicular)
 - Major Route
 - - - Town Line

Map Notes:
This map was prepared at a map scale of 1:18,000 at 24" by 36" layout. Report copies have been reduced to 11" x 17". Refer to graphic scale.
Open Space, Schools and State Forests/Parks are depicted using available State GIS data, which may be outdated in some areas.
Base map: ESRI Shaded Relief



**Proposed Verizon Wireless 850 MHz CDMA Coverage
From Hamden Relo Facility Only
Hamden, Connecticut and Surrounding Area
(*Map Scale is 1:18,000)**

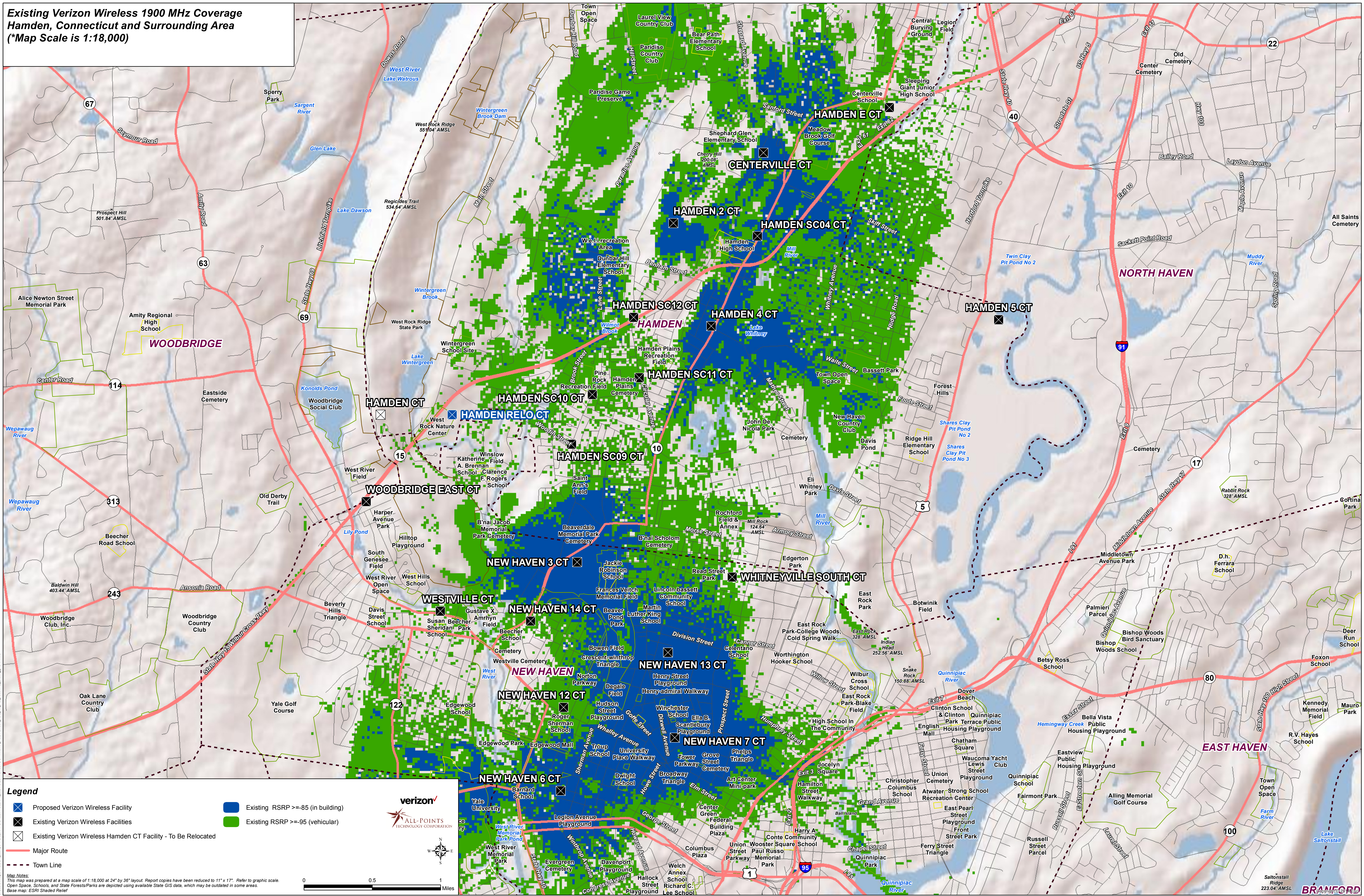


- Legend**
- Proposed Verizon Wireless Facility
 - Existing Verizon Wireless Facilities
 - ⊗ Existing Verizon Wireless Hamden CT Facility - To Be Relocated
 - Major Route
 - - - Town Line

Map Notes:
This map was prepared at a map scale of 1:20,000 at 24" by 36" layout. Report copies have been reduced to 11" x 17". Refer to graphic scale.
Open Space, Schools and State Forests/Parks are depicted using available State GIS data, which may be outdated in some areas.
Base map: ESRI Shaded Relief



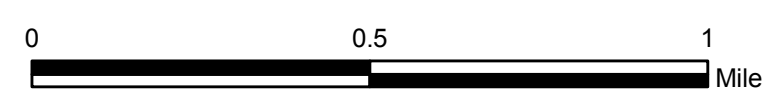
**Existing Verizon Wireless 1900 MHz Coverage
Hamden, Connecticut and Surrounding Area
(*Map Scale is 1:18,000)**



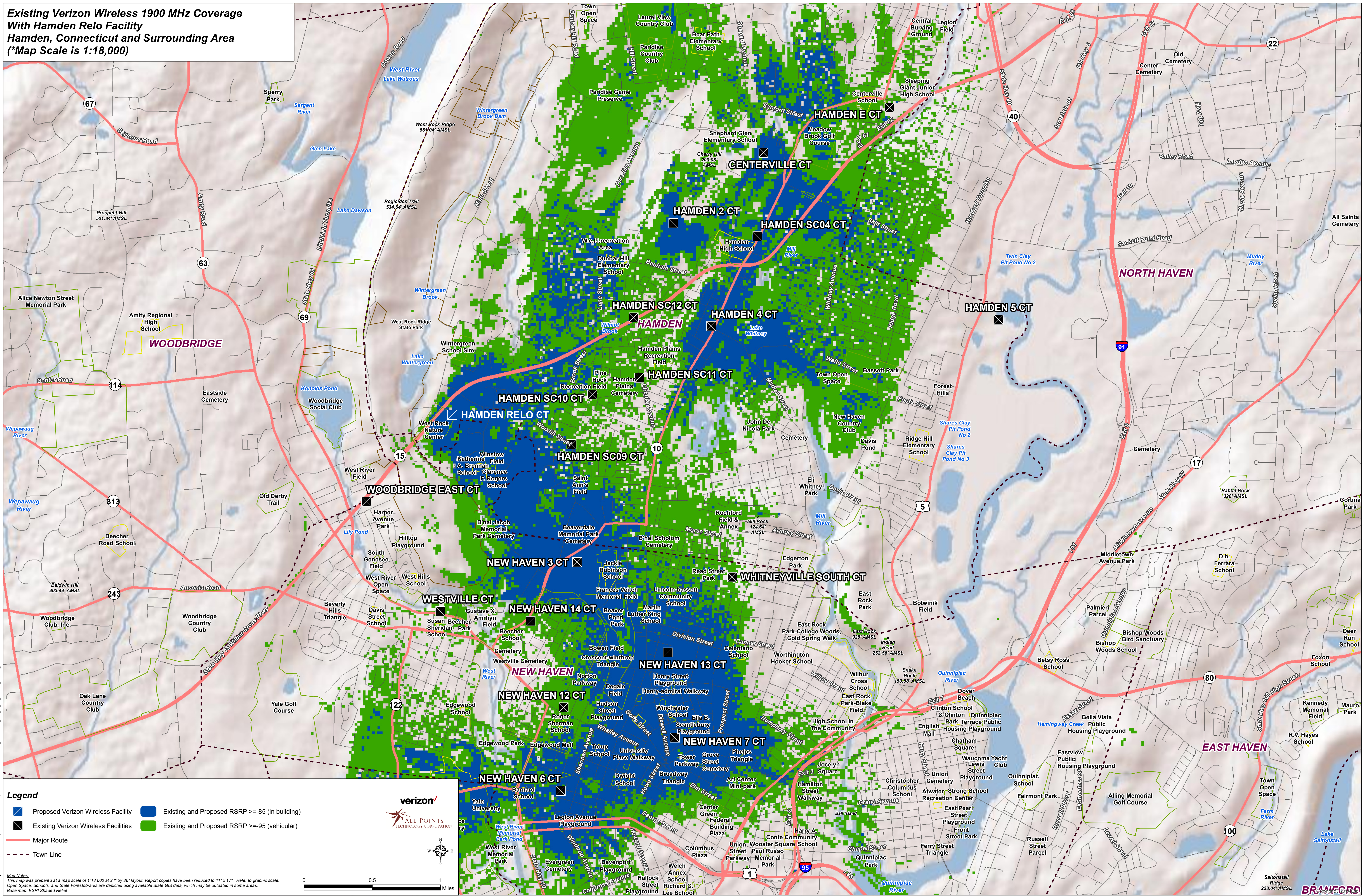
Legend

- Proposed Verizon Wireless Facility
- Existing Verizon Wireless Facilities
- Existing Verizon Wireless Hamden CT Facility - To Be Relocated
- Existing RSRP >= -85 (in building)
- Existing RSRP >= -95 (vehicular)
- Major Route
- - - Town Line

Map Notes:
This map was prepared at a map scale of 1:18,000 at 24" by 36" layout. Report copies have been reduced to 11" x 17". Refer to graphic scale.
Open Space, Schools and State Forests/Parks are depicted using available State GIS data, which may be outdated in some areas.
Base map: ESRI Shaded Relief



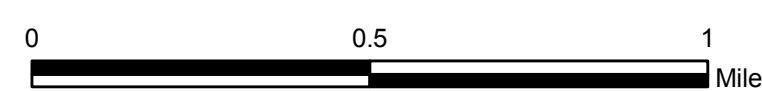
**Existing Verizon Wireless 1900 MHz Coverage
With Hamden Relo Facility
Hamden, Connecticut and Surrounding Area
(*Map Scale is 1:18,000)**



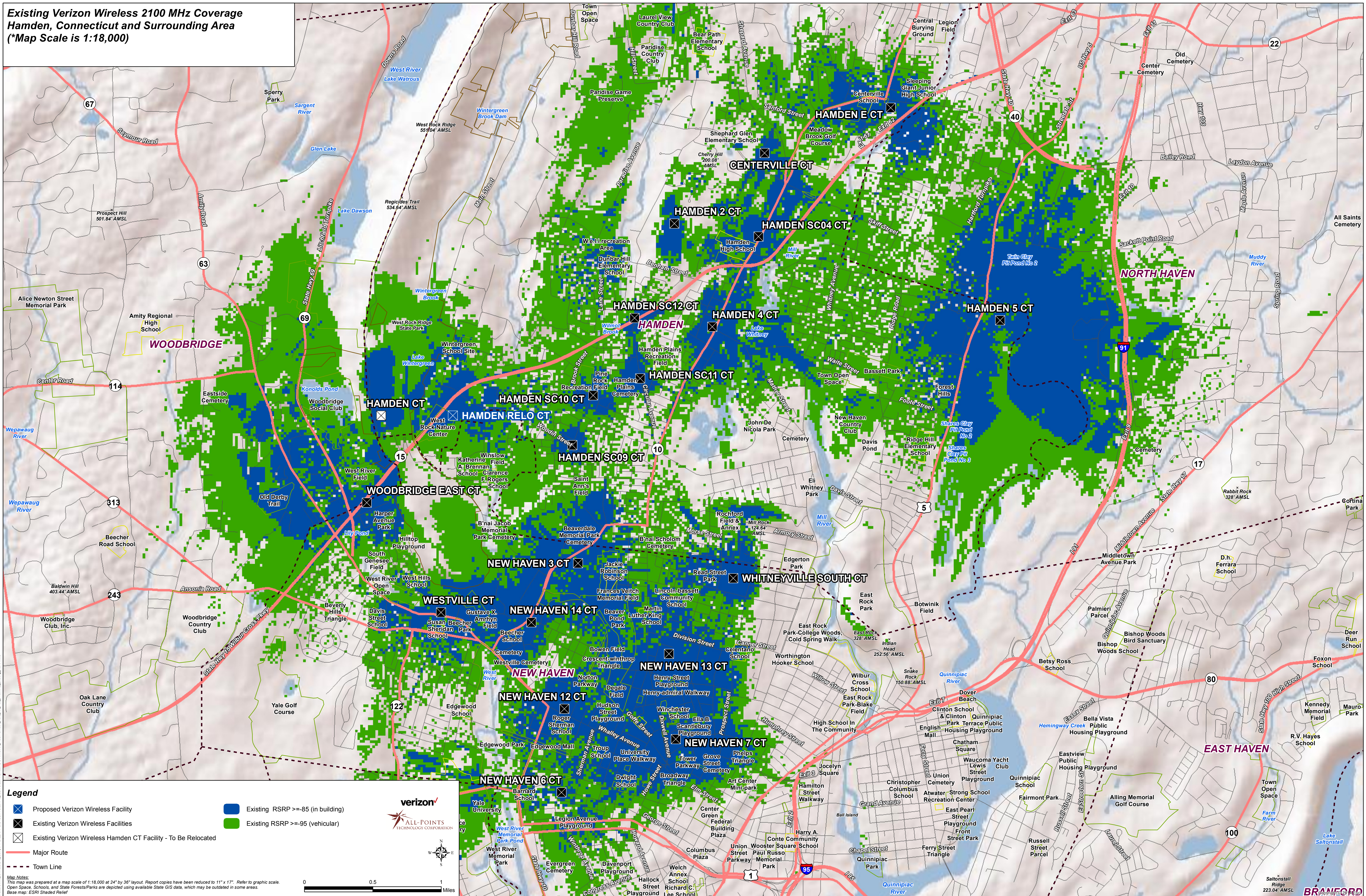
- Legend**
- Proposed Verizon Wireless Facility
 - Existing and Proposed RSRP >=85 (in building)
 - Existing Verizon Wireless Facilities
 - Existing and Proposed RSRP >=95 (vehicular)
 - Major Route
 - - - Town Line



Map Notes:
This map was prepared at a map scale of 1:18,000 at 24" by 36" layout. Report copies have been reduced to 11" x 17". Refer to graphic scale.
Open Space, Schools and State Forests/Parks are depicted using available State GIS data, which may be outdated in some areas.
Base map: ESRI Shaded Relief



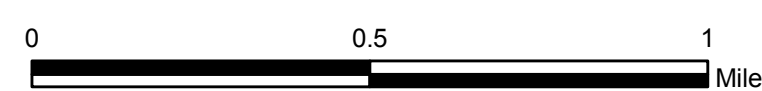
**Existing Verizon Wireless 2100 MHz Coverage
Hamden, Connecticut and Surrounding Area
(*Map Scale is 1:18,000)**



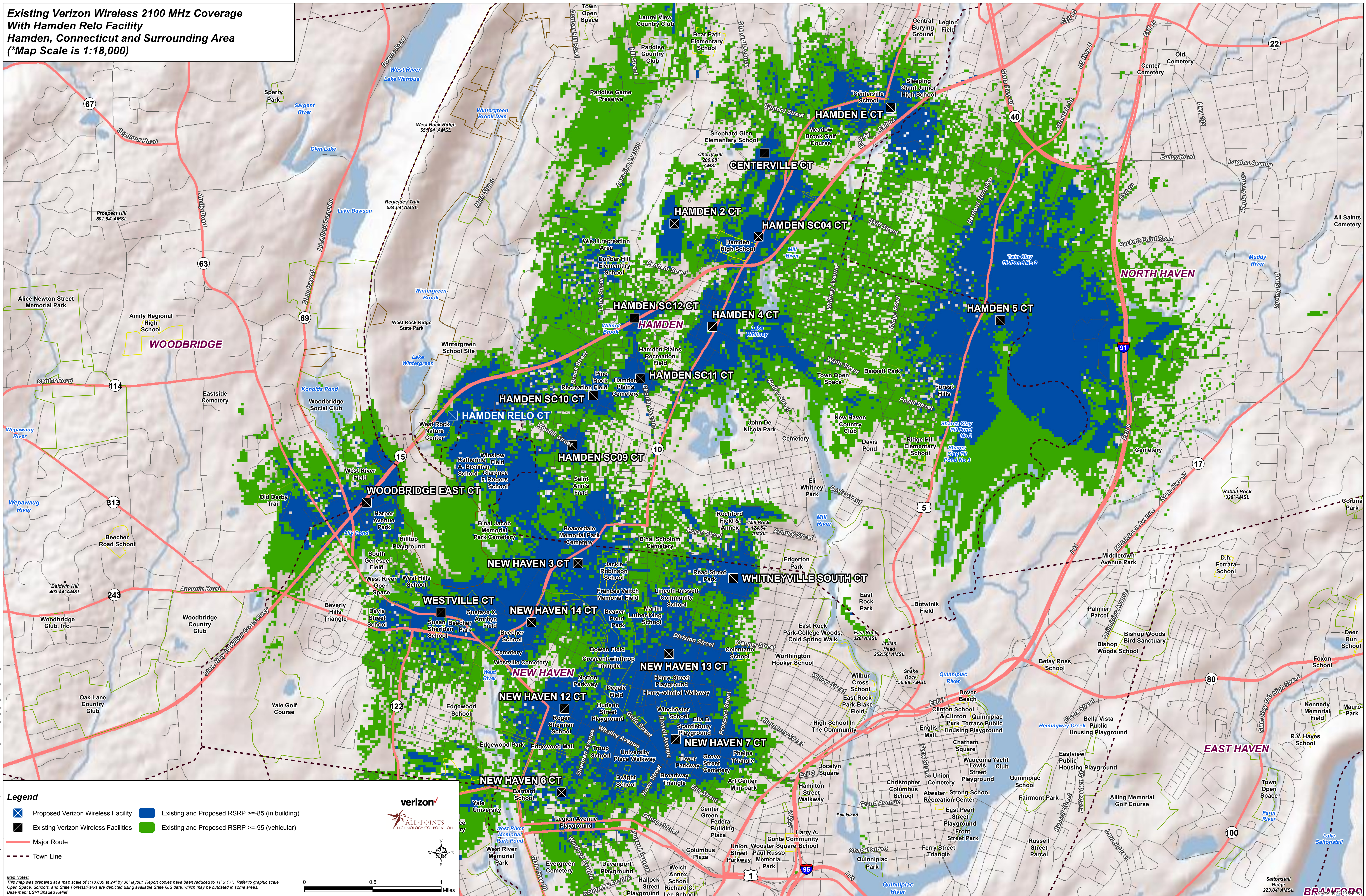
Legend

- Proposed Verizon Wireless Facility
- Existing RSRP >= -85 (in building)
- Existing RSRP >= -95 (vehicular)
- Existing Verizon Wireless Facilities
- Existing Verizon Wireless Hamden CT Facility - To Be Relocated
- Major Route
- Town Line

Map Notes:
This map was prepared at a map scale of 1:18,000 at 24" by 36" layout. Report copies have been reduced to 11" x 17". Refer to graphic scale.
Open Space, Schools and State Forests/Parks are depicted using available State GIS data, which may be outdated in some areas.
Base map: ESRI Shaded Relief



**Existing Verizon Wireless 2100 MHz Coverage
With Hamden Relo Facility
Hamden, Connecticut and Surrounding Area
(*Map Scale is 1:18,000)**



- Legend**
- Proposed Verizon Wireless Facility
 - Existing and Proposed RSRP >= -85 (in building)
 - Existing Verizon Wireless Facilities
 - Existing and Proposed RSRP >= -95 (vehicular)
 - Major Route
 - - - Town Line

Map Notes:
This map was prepared at a map scale of 1:18,000 at 24" by 36" layout. Report copies have been reduced to 11" x 17". Refer to graphic scale.
Open Space, Schools and State Forests/Parks are depicted using available State GIS data, which may be outdated in some areas.
Base map: ESRI Shaded Relief

