



**PRELIMINARY HISTORIC
RESOURCES DETERMINATION**

May 8, 2018

**Verizon Wireless
99 East River Drive
East Hartford, CT 06108**

APT Project No.: CT1418180

**Re: Proposed Pomfret Center Facility
72 Ragged Hill Road
Pomfret, Connecticut**

Verizon Wireless is considering three potential site locations to develop a new wireless telecommunications facility on a wooded ±627-acre parcel east of Ragged Hill and Swedetown Roads. Points Technology Corporation, P.C. ("APT") performed an evaluation with respect to potential impacts on historic resources proximate to the project.

The results of our independent review of properties listed, or eligible for listing, on the National Register of Historic Places ("NRHP") reveals that no such resources are located within one-half mile of the site.¹ Further, no state-registered sites are located proximate to the project site. Historic resource mapping is provided as an attachment. Based on our research, it is APT's opinion that the proposed Facility would have no effect on historic properties listed, or eligible for listing, on the NRHP.

As part of its due diligence for compliance with the National Environmental Policy Act ("NEPA"), Verizon Wireless is compiling applicable historic documentation for future submission to the State Historic Preservation Office ("SHPO") for this agency's review and determination. The SHPO submission will be prepared by a qualified architectural historian that meets criteria developed by the Secretary of the Interior. In keeping with its corporate policy, Verizon Wireless will not make a formal submittal to the SHPO until the project is farther along in the siting process and a viable location is fully vetted.

A copy of the SHPO's response will be provided to the Siting Council upon receipt.

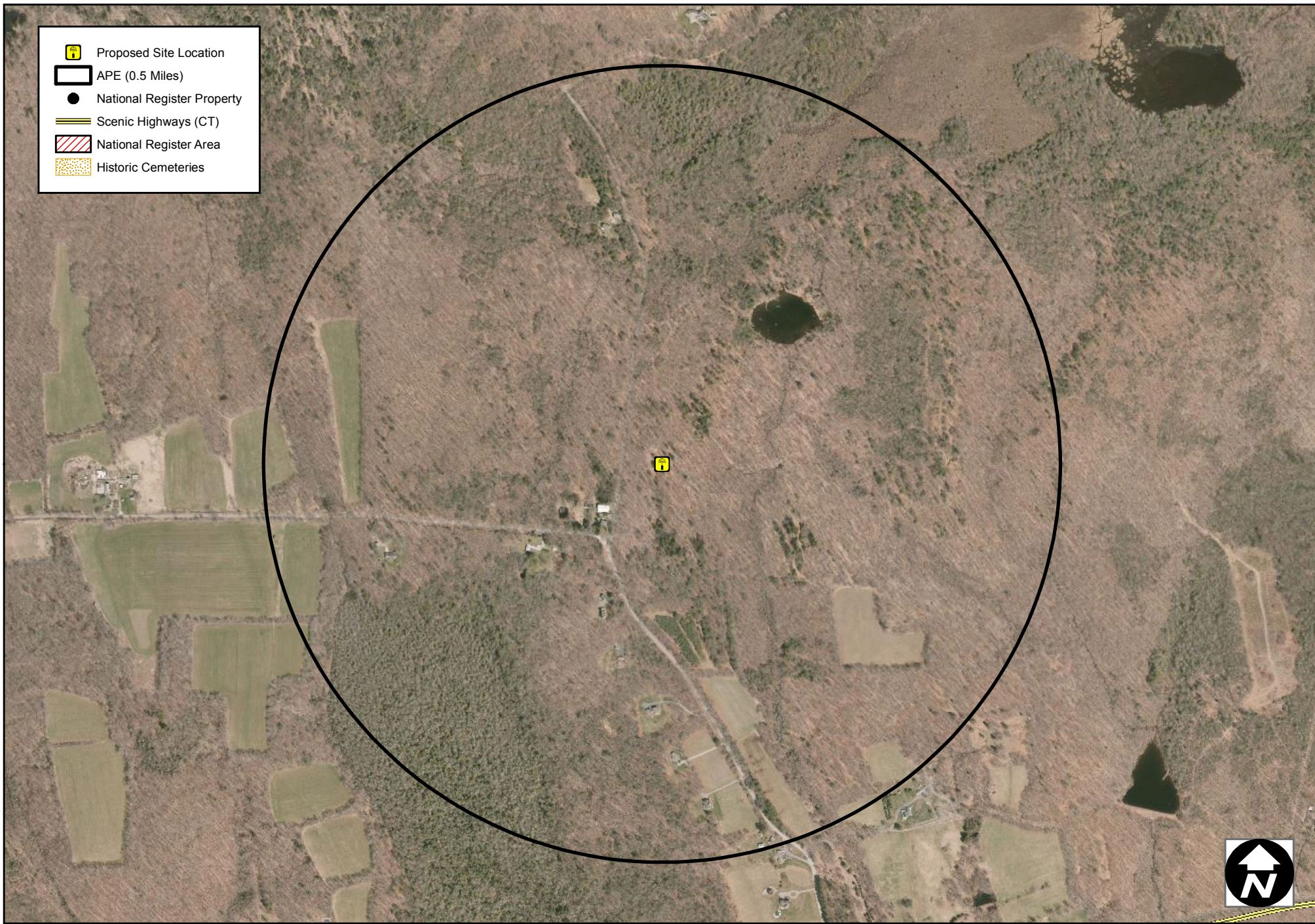
A handwritten signature in black ink that reads "Michael Libertine".







Michael Libertine,
Director of Siting and Permitting

Attachments

¹ For towers under 200 feet tall, the Area of Potential Effect ("APE") has been established at 0.5 mile. This distance represents the APE established cooperatively by the Federal Communications Commission, Advisory Council on Historic Preservation and the National Conference of State Historic Preservation Officers.

Historic Resource Screening Maps



-  Proposed Site Location
-  APE (0.5 Miles)
-  National Register Property
-  Scenic Highways (CT)
-  National Register Area
-  Historic Cemeteries



Cultural Resources Screen
Pomfret Center CT- 72 Ragged Hill Rd, Pomfret Center, CT
 USGS QUAD: Eastford

