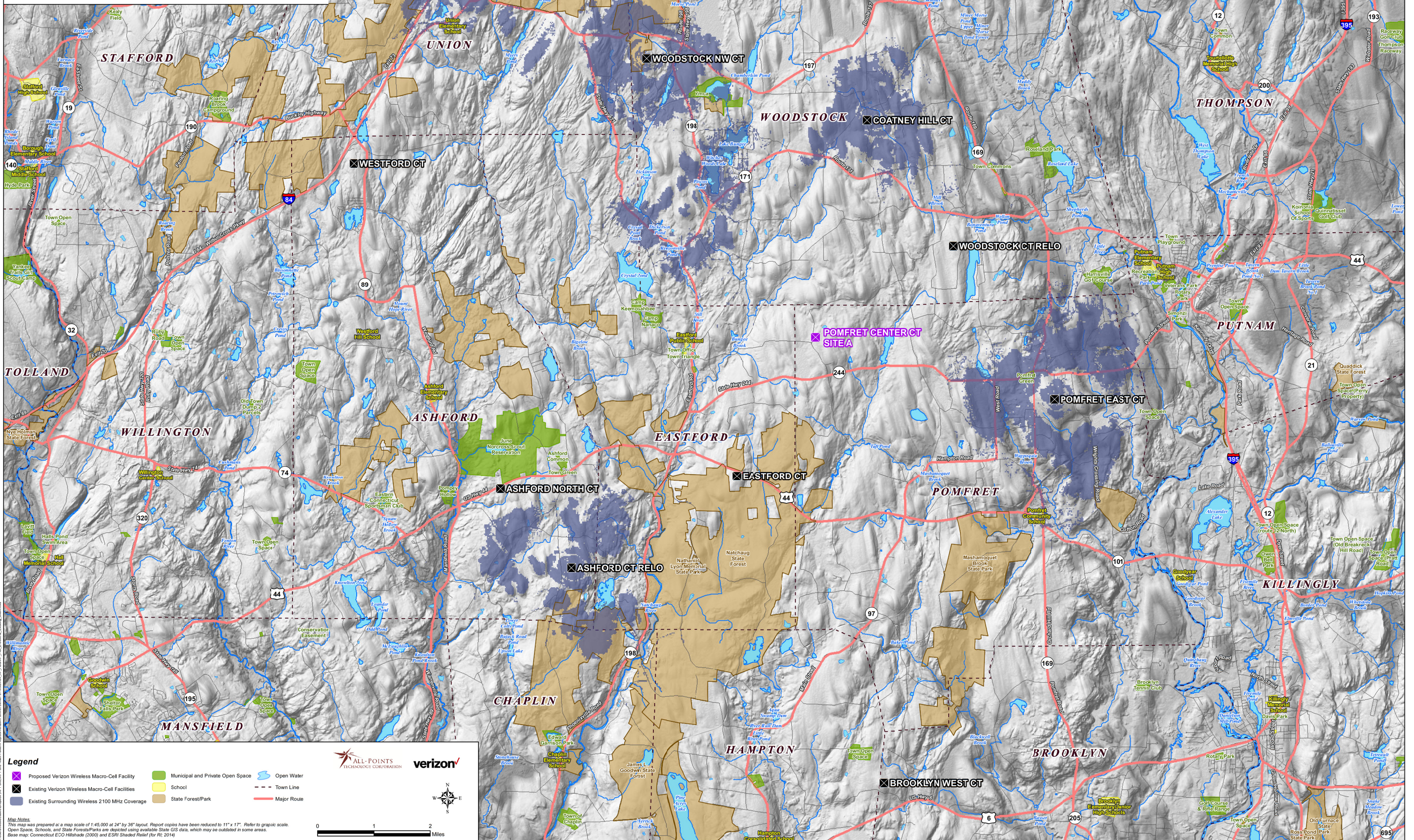


Existing Verizon Wireless 2100 MHz Coverage
Pomfret Center CT Site A
(Pomfret) Eastford, Connecticut and Surrounding Area
(*Map Scale is 1:45,000)

Coverage is depicted at a signal threshold of -95 dBm RSRP



Legend

- Proposed Verizon Wireless Macro-Cell Facility
- Existing Verizon Wireless Macro-Cell Facilities
- Existing Surrounding Wireless 2100 MHz Coverage
- Municipal and Private Open Space
- School
- State Forest/Park
- Open Water
- Town Line
- Major Route

Map Notes

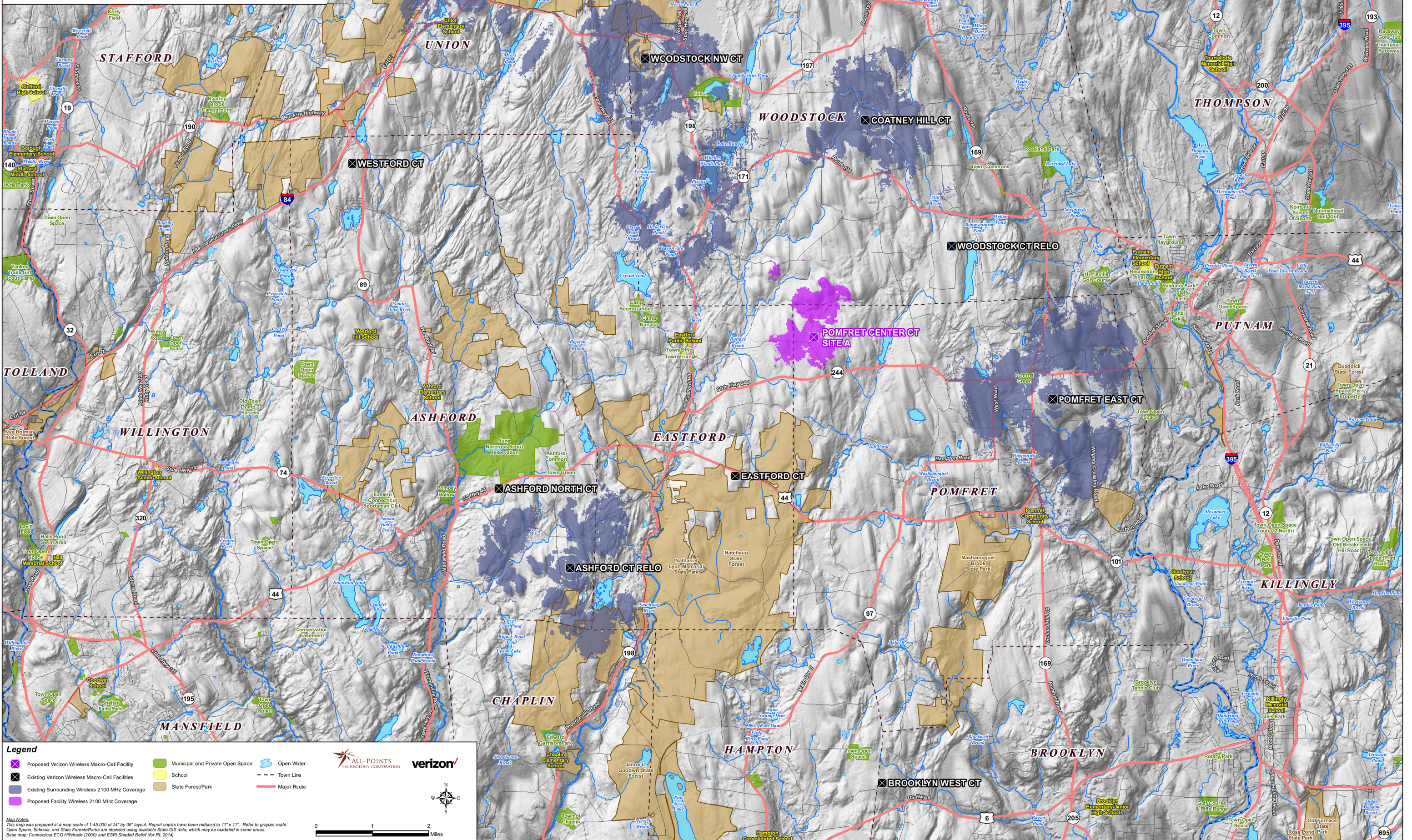
This map was prepared at a map scale of 1:45,000 at 24" by 36" layout. Report copies have been reduced to 11" x 17". Refer to graphic scale. Open Space, Schools, and State Forest/Parks are depicted using available State GIS data, which may be outdated in some areas. Base map: Connecticut ECO Hillshade (2000) and ESRI Shaded Relief (for RI, 2014).

0 1 2 Miles

ALL-POINTS TECHNOLOGY CORPORATION **verizon**

**Proposed Verizon Wireless 2100 MHz Coverage
Pomfret Center CT Site A
(Pomfret) Eastford, Connecticut and Surrounding Area
(*Map Scale is 1:45,000)**

Coverage is depicted at a signal threshold of -95 dBm RSRP



Legend

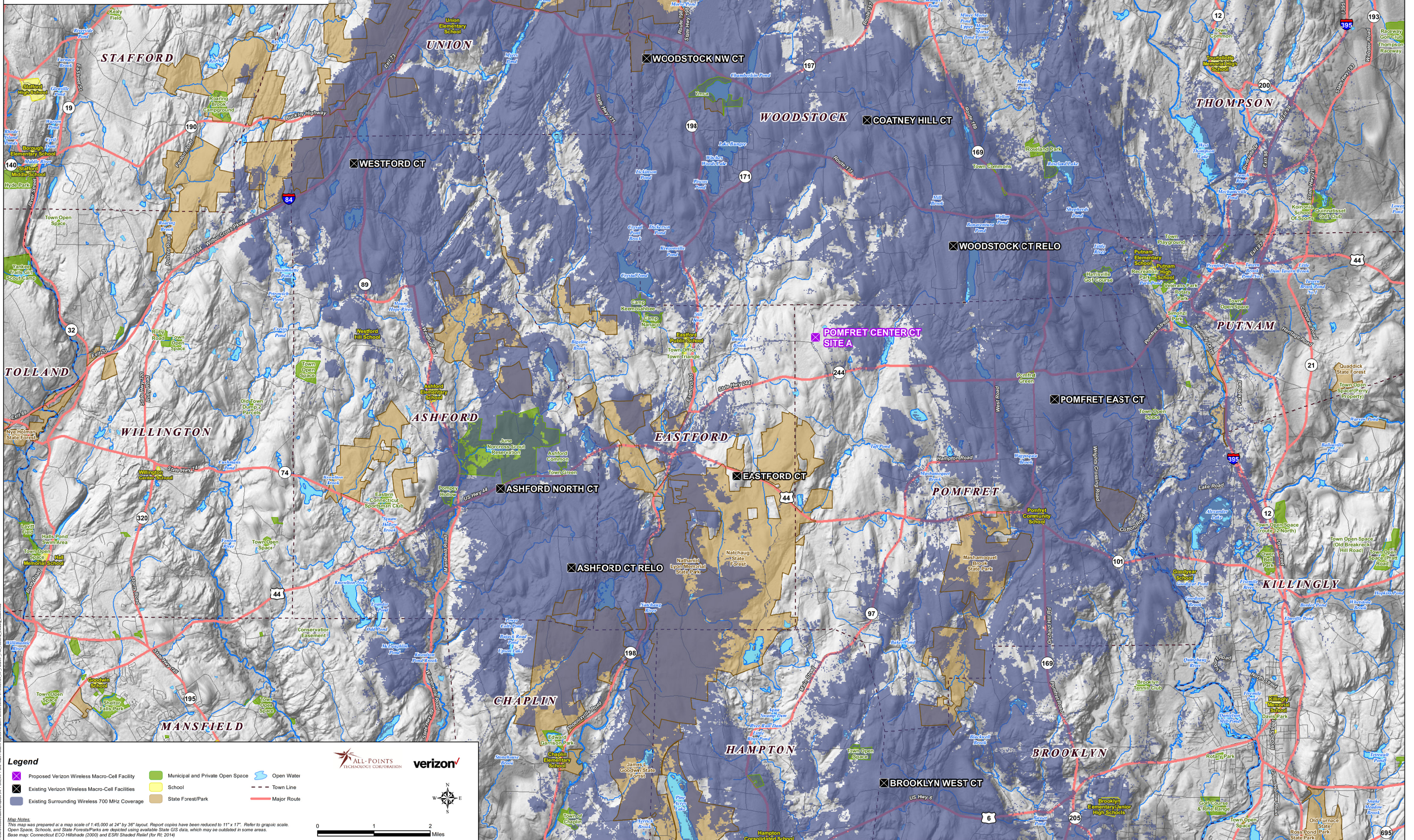
- Proposed Verizon Wireless Macro-Cell Facility
- Municipal and Private Open Space
- Open Water
- Existing Verizon Wireless Macro-Cell Facilities
- School
- Town Line
- Existing Surrounding Wireless 2100 MHz Coverage
- State Forest/Park
- Major Route
- Proposed Facility Wireless 2100 MHz Coverage

Map Notes
This map was prepared at a map scale of 1:45,000 at 24" by 36" layout. Report copies have been reduced to 11" x 17". Refer to graphic scale.
Open Space, Schools, and State Forests/Parks are depicted using available State GIS data, which may be outdated in some areas.
Base map: Connecticut ECO Hillshade (2000) and ESRI Shaded Relief (for RI, 2014)

ALL-POINTS TECHNOLOGY CORPORATION

Existing Verizon Wireless 700 MHz Coverage
Pomfret Center CT Site A
(Pomfret) Eastford, Connecticut and Surrounding Area
(*Map Scale is 1:45,000)

Coverage is depicted at a signal threshold of -95 dBm RSRP



Legend

- Proposed Verizon Wireless Macro-Cell Facility
- Existing Verizon Wireless Macro-Cell Facilities
- Existing Surrounding Wireless 700 MHz Coverage
- Municipal and Private Open Space
- School
- State Forest/Park
- Open Water
- Town Line
- Major Route

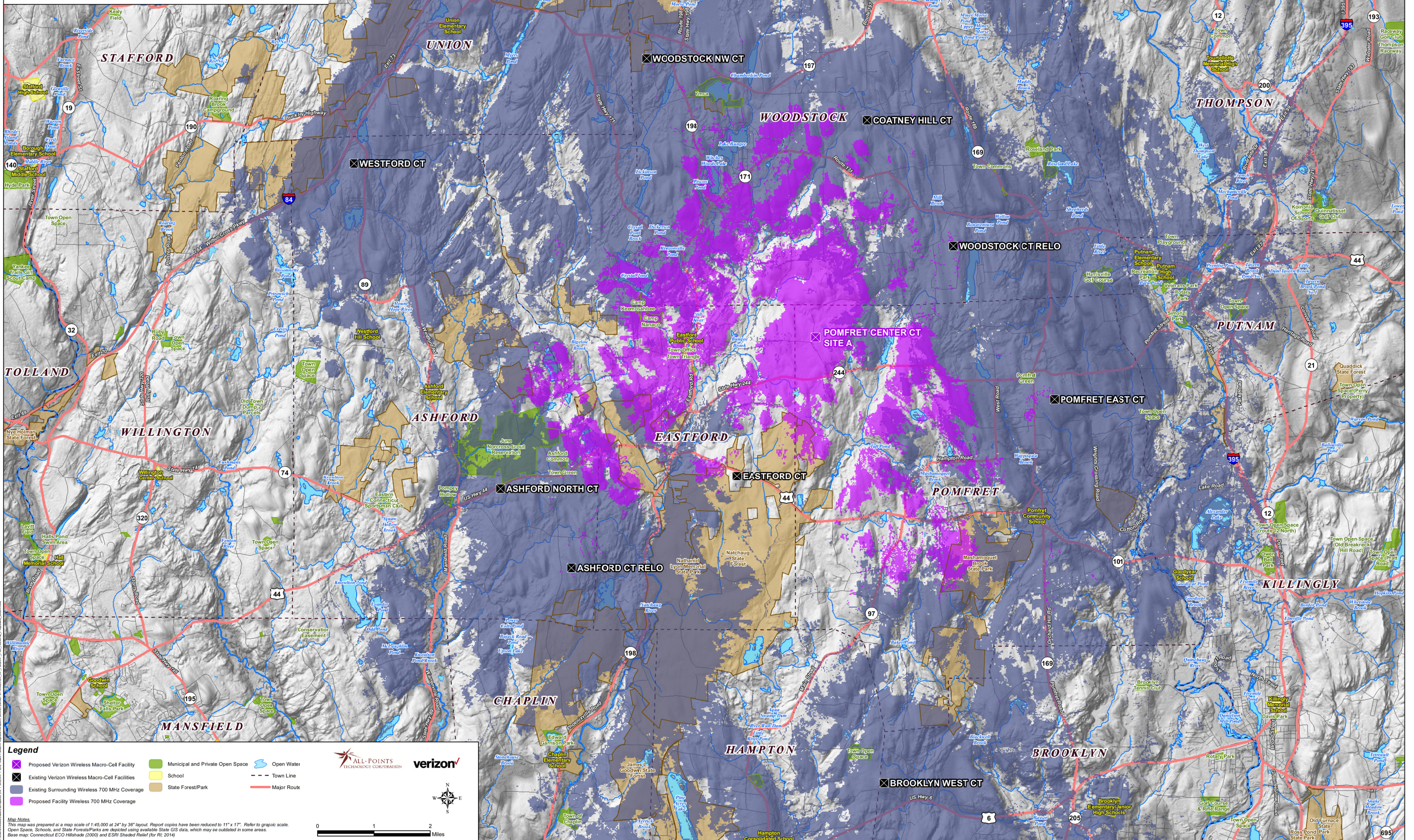
Map Notes
 This map was prepared at a map scale of 1:45,000 at 24" by 36" layout. Report copies have been reduced to 11" x 17". Refer to graphic scale.
 Open Space, Schools, and State Forests/Parks are depicted using available State GIS data, which may be outdated in some areas.
 Base map: Connecticut ECO Hillshade (2000) and ESRI Shaded Relief (for RI, 2014)

ALL-POINTS TECHNOLOGY CORPORATION | verizon

0 1 2 Miles

**Proposed Verizon Wireless 700 MHz Coverage
Pomfret Center CT Site A
(Pomfret) Eastford, Connecticut and Surrounding Area
(*Map Scale is 1:45,000)**

Coverage is depicted at a signal threshold of -95 dBm RSRP



Legend

- Proposed Verizon Wireless Macro-Cell Facility
- Existing Surrounding Wireless 700 MHz Coverage
- Proposed Facility Wireless 700 MHz Coverage
- Municipal and Private Open Space
- School
- State Forest/Park
- Open Water
- Town Line
- Major Route

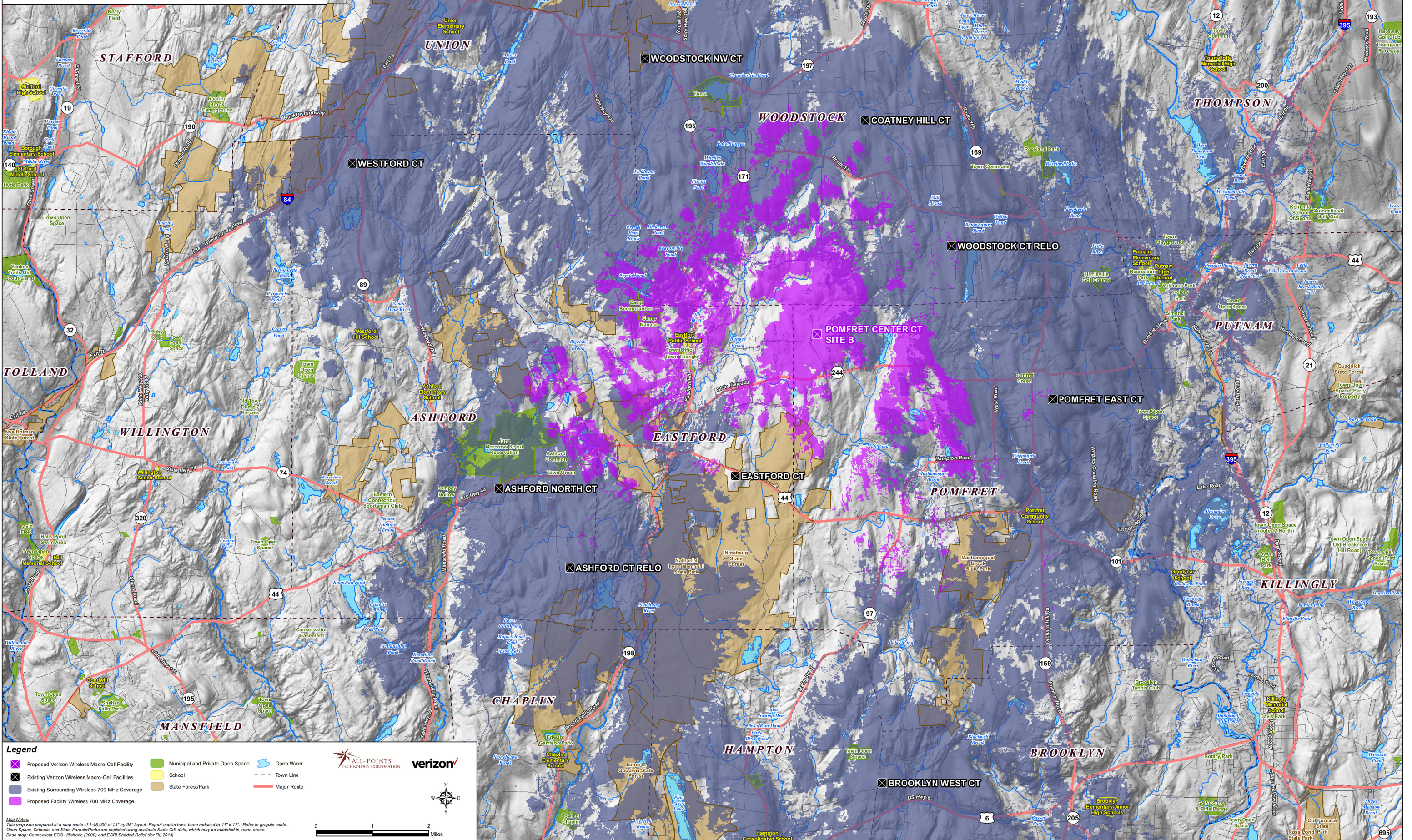
Map Notes
This map was prepared at a map scale of 1:45,000 at 24" by 36" layout. Report copies have been reduced to 11" x 17". Refer to graphic scale. Open Space, Schools, and State Forest/Parks are depicted using available State GIS data, which may be outdated in some areas. Base map: Connecticut ECO Hillshade (2000) and ESRI Shaded Relief (for RI, 2014)

Scale: 0 1 2 Miles

Logos: ALL-POINTS TECHNOLOGY CORPORATION, verizon

**Proposed Verizon Wireless 700 MHz Coverage
Pomfret Center CT Site B
(Pomfret) Eastford, Connecticut and Surrounding Area
(*Map Scale is 1:45,000)**

Coverage is depicted at a signal threshold of -95 dBm RSRP



Legend

- Proposed Verizon Wireless Macro-Cell Facility
- Municipal and Private Open Space
- Open Water
- Existing Verizon Wireless Macro-Cell Facilities
- School
- State Forest/Park
- Existing Surrounding Wireless 700 MHz Coverage
- Town Line
- Major Route
- Proposed Facility Wireless 700 MHz Coverage

Map Notes
This map was prepared at a map scale of 1:45,000 at 24" by 36" layout. Report copies have been reduced to 11" x 17". Refer to graphic scale. Open Space, Schools, and State Forest/Parks are depicted using available State GIS data, which may be outdated in some areas. Base map: Connecticut ECO Hillshade (2000) and ESRI Shaded Relief (for RI, 2014)

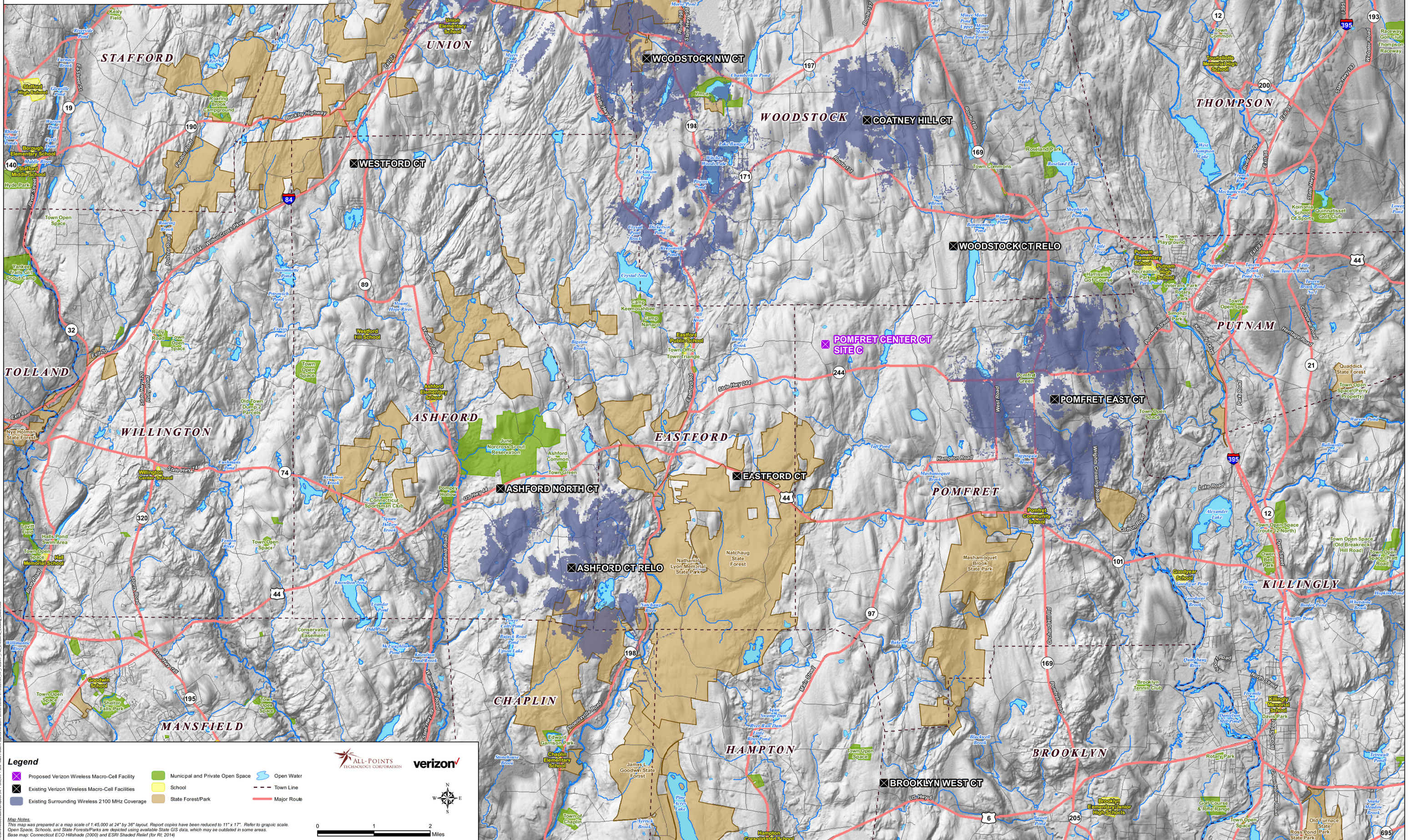
0 1 2 Miles

ALL-POINTS TECHNOLOGY CORPORATION **verizon**

C:\Users\mcc\Documents\Map\010118\010118.ctb: Staff: E:\Projects\010118\010118.ctb: 01/18/2018 10:00 AM

Existing Verizon Wireless 2100 MHz Coverage
Pomfret Center CT Site C
(Pomfret) Eastford, Connecticut and Surrounding Area
(*Map Scale is 1:45,000)

Coverage is depicted at a signal threshold of -95 dBm RSRP



- Legend**
- Proposed Verizon Wireless Macro-Cell Facility
 - Existing Verizon Wireless Macro-Cell Facilities
 - Existing Surrounding Wireless 2100 MHz Coverage
 - Municipal and Private Open Space
 - School
 - State Forest/Park
 - Open Water
 - Town Line
 - Major Routes



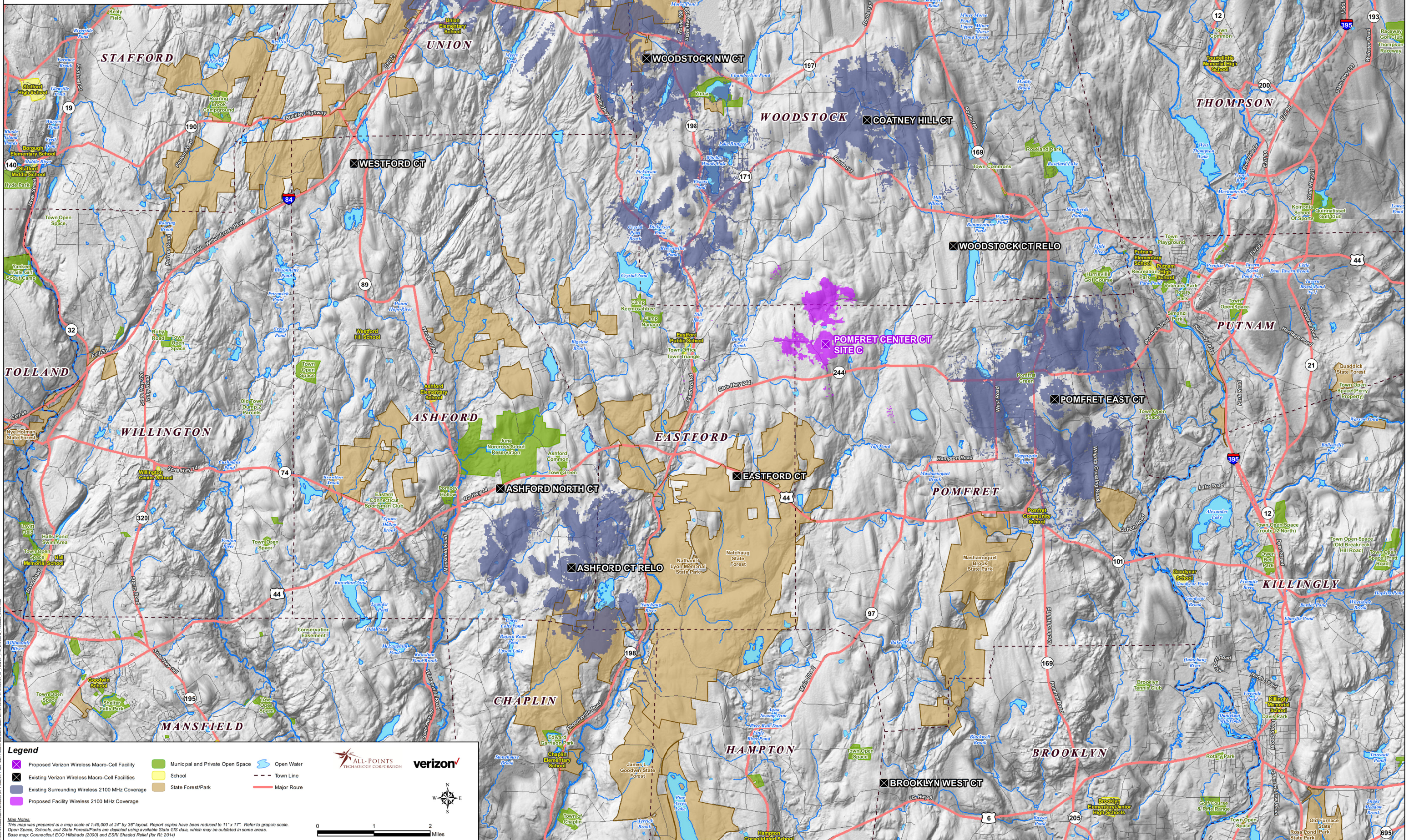
Map Notes
This map was prepared at a map scale of 1:45,000 at 24" by 36" layout. Report copies have been reduced to 11" x 17". Refer to graphic scale.
Open Space, Schools, and State Forests/Parks are depicted using available State GIS data, which may be outdated in some areas.
Base map: Connecticut ECO Hillshade (2000) and ESRI Shaded Relief (for RI, 2014)



01/20/2014 10:00 AM C:\Users\jmc\Documents\Map\2100MHz\2100MHz.ctm
Map Scale: 1:45,000
Map Date: 01/20/2014
Map Time: 10:00 AM
Map Author: jmc
Map Title: Existing Verizon Wireless 2100 MHz Coverage (Pomfret) Eastford, Connecticut and Surrounding Area
Map Scale: 1:45,000
Map Date: 01/20/2014
Map Time: 10:00 AM
Map Author: jmc
Map Title: Existing Verizon Wireless 2100 MHz Coverage (Pomfret) Eastford, Connecticut and Surrounding Area

**Proposed Verizon Wireless 2100 MHz Coverage
Pomfret Center CT Site C
(Pomfret) Eastford, Connecticut and Surrounding Area
(*Map Scale is 1:45,000)**

Coverage is depicted at a signal threshold of -95 dBm RSRP



Legend

- ✖ Proposed Verizon Wireless Macro-Cell Facility
- ✖ Existing Verizon Wireless Macro-Cell Facilities
- ✖ Existing Surrounding Wireless 2100 MHz Coverage
- ✖ Proposed Facility Wireless 2100 MHz Coverage
- Municipal and Private Open Space
- School
- State Forest/Park
- Open Water
- Town Line
- Major Route

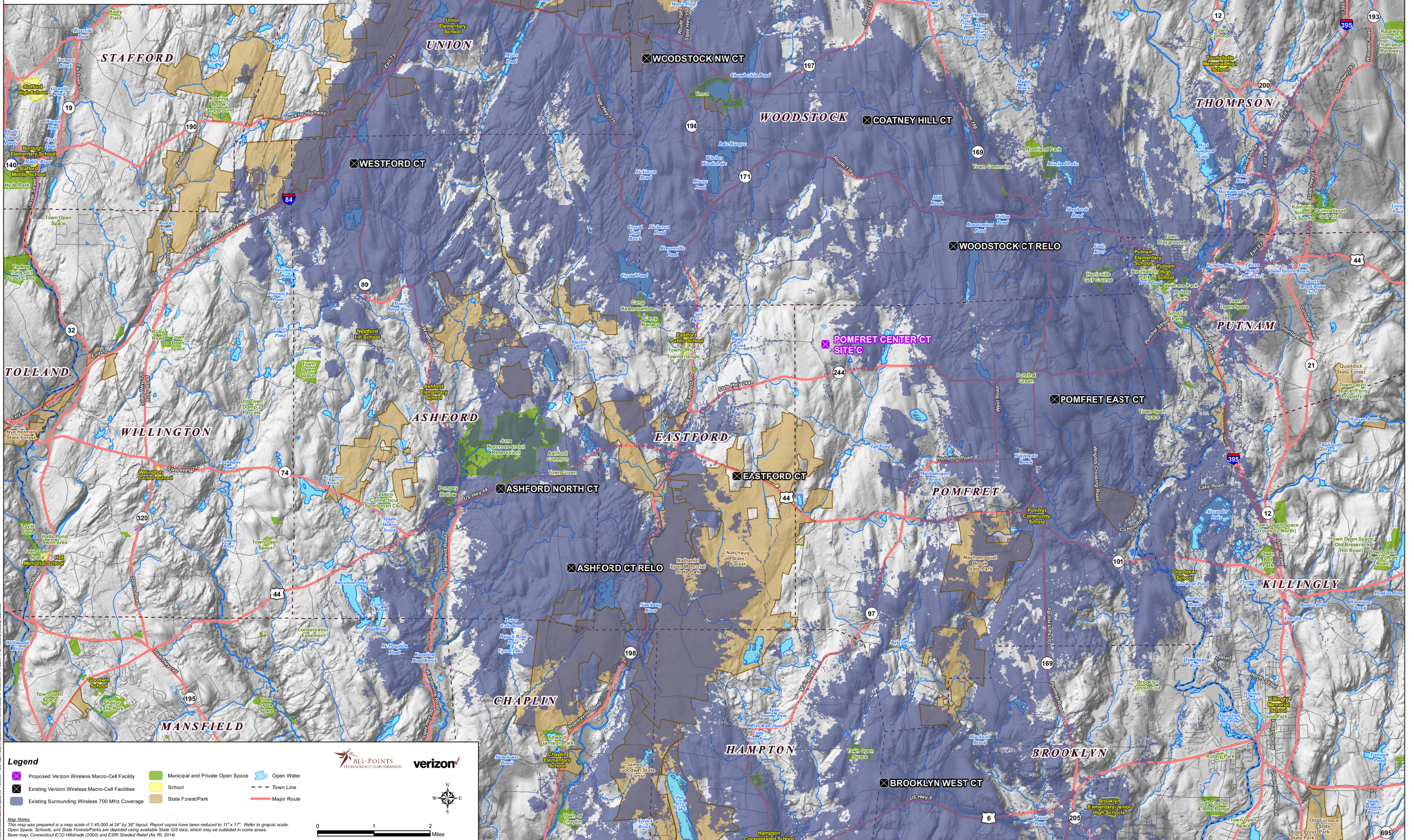
Map Notes
This map was prepared at a map scale of 1:45,000 at 24" by 36" layout. Report copies have been reduced to 11" x 17". Refer to graphic scale.
Open Space, Schools, and State Forests/Parks are depicted using available State GIS data, which may be outdated in some areas.
Base map: Connecticut ECO Hillshade (2000) and ESRI Shaded Relief (for RI, 2014)

Scale: 0 1 2 Miles

Logos: ALL-POINTS TECHNOLOGY CORPORATION, verizon

Existing Verizon Wireless 700 MHz Coverage
Pomfret Center CT Site C
(Pomfret) Eastford, Connecticut and Surrounding Area
(*Map Scale is 1:45,000)

Coverage is depicted at a signal threshold of -95 dBm RSRP



Legend

- Proposed Verizon Wireless Macro-Cell Facility
- Existing Verizon Wireless Macro-Cell Facilities
- Existing Surrounding Wireless 700 MHz Coverage
- Municipal and Private Open Space
- School
- State Forest/Park
- Open Water
- Town Line
- Major Route

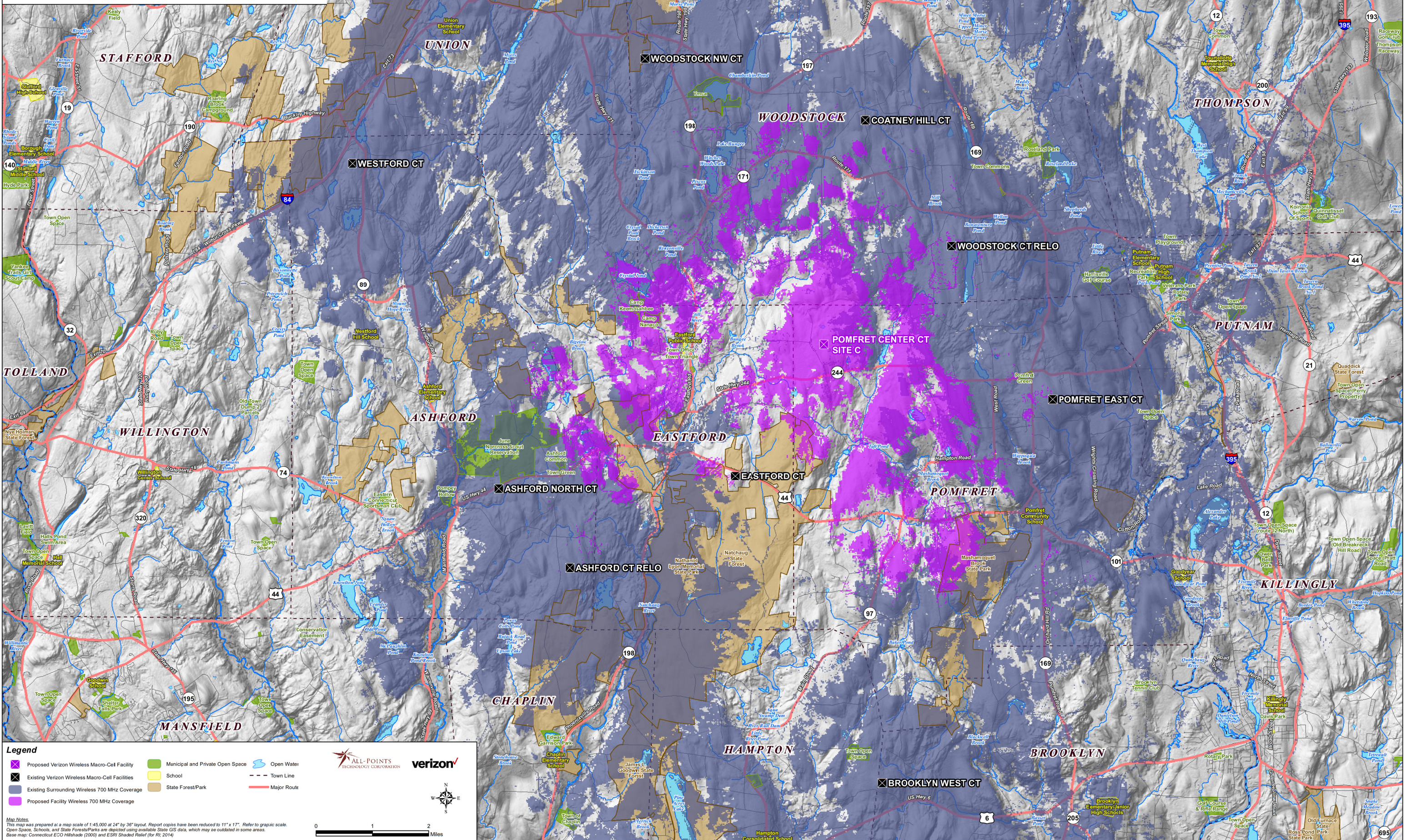
Map Notes
 This map was prepared at a map scale of 1:45,000 at 24" by 36" layout. Report copies have been reduced to 11" x 17". Refer to graphic scale.
 Open Space, Schools, and State Forests/Parks are depicted using available State GIS data, which may be outdated in some areas.
 Base map: Connecticut ECO Hillshade (2000) and ESRI Shaded Relief (for RI, 2014)

Scale: 0 1 2 Miles

Logos: ALL-POINTS TECHNOLOGY CORPORATION, verizon

**Proposed Verizon Wireless 700 MHz Coverage
Pomfret Center CT Site C
(Pomfret) Eastford, Connecticut and Surrounding Area
(*Map Scale is 1:45,000)**

Coverage is depicted at a signal threshold of -95 dBm RSRP



Legend

- Proposed Verizon Wireless Macro-Cell Facility
- Existing Surrounding Wireless 700 MHz Coverage
- Municipal and Private Open Space
- School
- Open Water
- Town Line
- State Forest/Park
- Major Route

Map Notes
This map was prepared at a map scale of 1:45,000 at 24" by 36" layout. Report copies have been reduced to 11" x 17". Refer to graphic scale. Open Space, Schools, and State Forests/Parks are depicted using available State GIS data, which may be outdated in some areas. Base map: Connecticut ECO Hillshade (2000) and ESRI Shaded Relief (for RI, 2014)

Scale: 0 1 2 Miles

Logos: ALL-POINTS TECHNOLOGY CORPORATION, verizon