

BRUCE L. MCDERMOTT  
203.772.7787 DIRECT TELEPHONE  
860.240.5723 DIRECT FACSIMILE  
BMCDERMOTT@MURTHALAW.COM

February 9, 2022

**VIA ELECTRONIC FILING**

Melanie Bachman, Esq.  
Executive Director/Staff Attorney  
The Connecticut Siting Council  
Ten Franklin Square  
New Britain, CT 06051

Re: Docket 483 The United Illuminating Company application for a Certificate of Environmental Compatibility and Public Need for the Pequonnock Substation Rebuild Project - Notification of Modification

Dear Attorney Bachman:

The United Illuminating Company (“UI”) submits this Notice of Modification pursuant to the Connecticut Siting Council’s (“Council”) August 28, 2020 approval of UI’s Development and Management Plan (“D&M Plan”) for review and approval by the Council’s staff. The Council’s August 28, 2020 letter provides that “changes to the D&M Plan shall be approved by Council staff in accordance RCSA §16-50j-62(b).”

Two changes to the D&M plan are as follows:

- To accommodate an alternative placement of the overhead Transmission Line for the connection of the 1130 line into the new Pequonnock substation, new locations for the overhead transmission monopoles and the subsequent routing of the conductors is necessary. The 1130 line modification is required due to unforeseen concerns expressed by an adjacent property owner and to more effectively accommodate the future alignment with UI’s Fairfield to Congress project which will run through the same area and is expected to be before the Council in 2022 or 2023.
- To accommodate the retirement of PSEG’s unit 3, UI is rerouting the previously planned overhead transmission line from the PSEG interconnection to old Pequonnock substation. This will allow UI to energize the new substation and subsequently enhance the testing and commissioning.

**Murtha Cullina LLP**  
265 Church Street  
New Haven, CT 06510  
T 203.772.7700  
F 203.772.7723

Melanie Bachman, Esq.  
February 9, 2022  
Page 2

Attachments A, B, C and D show these two modifications to the original D&M Plan. All new monopole locations are on UI and/or Metro North/CONNDOT property.

Please do not hesitate to contact me with any questions or concerns regarding this notification at (203) 772-7787.

Very truly yours,



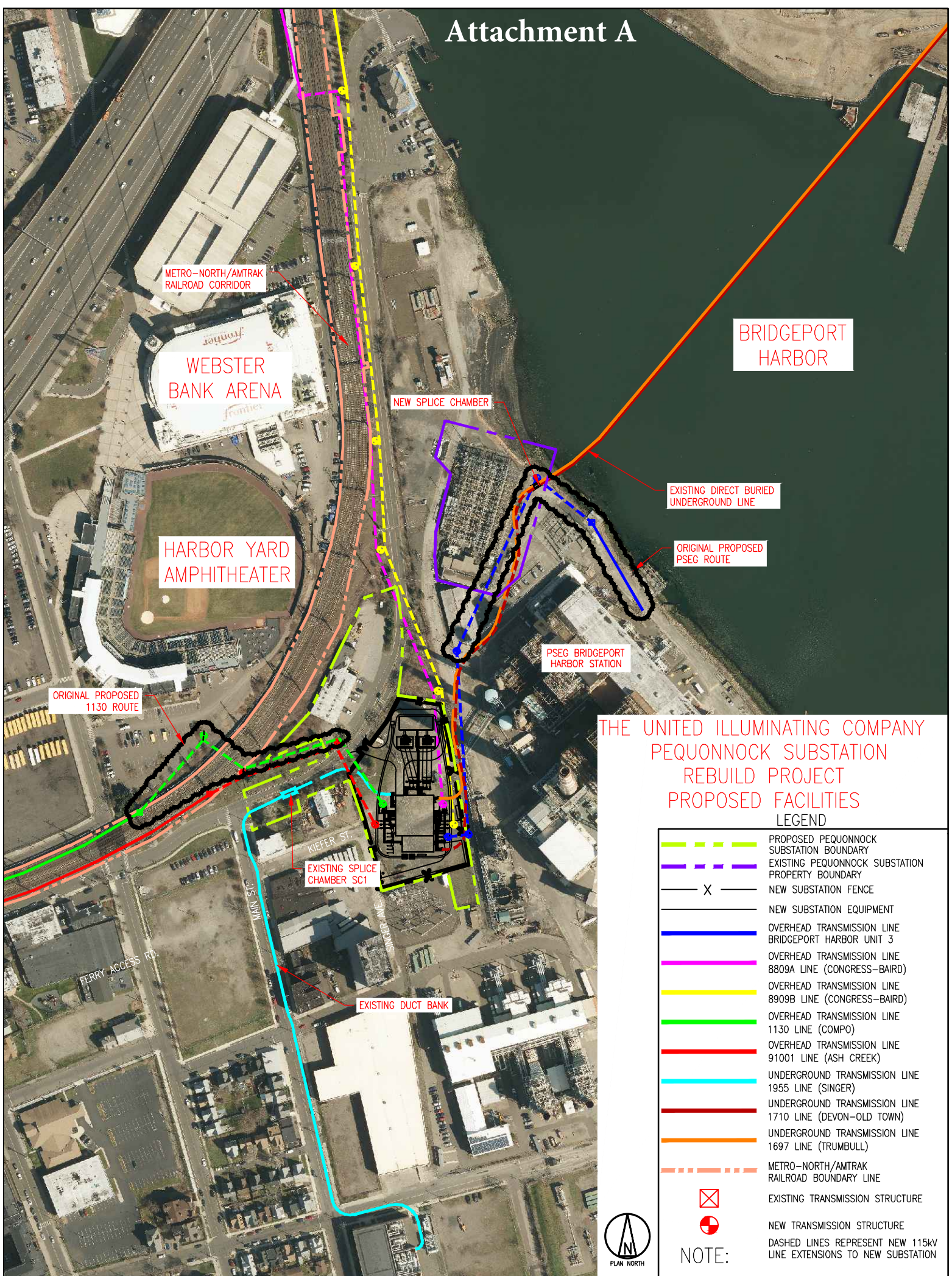
Bruce L. McDermott

Enclosures

## **New Pequonnock Substation D&M Minor Modifications**

- Attachment A shows the originally proposed routing of the 1130 Line and the BHS #3 interconnection. *See back circled areas.* This Attachment is similar to Figure 2-1 of the D&M Plan.
- Attachment B shows the originally proposed removals with the specific 1130-line removals identified. *See back circled areas.* This Attachment is similar to Figure 2-2 of the D&M Plan.
- Attachment C shows the “new” routing of the 1130 line and PSEG unit 3 interconnection. *See back circled areas.*
- Attachment D shows the “new” removals of the 1130 line. *See back circled areas.*

# Attachment A



METRO-NORTH/AMTRAK RAILROAD CORRIDOR

WEBSTER BANK ARENA

HARBOR YARD AMPHITHEATER

NEW SPLICE CHAMBER

BRIDGEPORT HARBOR

EXISTING DIRECT BURIED UNDERGROUND LINE

ORIGINAL PROPOSED PSEG ROUTE

PSEG BRIDGEPORT HARBOR STATION

ORIGINAL PROPOSED 1130 ROUTE

EXISTING SPLICE CHAMBER SC1

EXISTING DUCT BANK

KIEFER ST.

MAIN ST.

SINCEP AVE.

FERRY ACCESS RD.

## THE UNITED ILLUMINATING COMPANY PEQUONNOCK SUBSTATION REBUILD PROJECT PROPOSED FACILITIES LEGEND

	PROPOSED PEQUONNOCK SUBSTATION BOUNDARY
	EXISTING PEQUONNOCK SUBSTATION PROPERTY BOUNDARY
	NEW SUBSTATION FENCE
	NEW SUBSTATION EQUIPMENT
	OVERHEAD TRANSMISSION LINE BRIDGEPORT HARBOR UNIT 3
	OVERHEAD TRANSMISSION LINE 8809A LINE (CONGRESS-BAIRD)
	OVERHEAD TRANSMISSION LINE 8909B LINE (CONGRESS-BAIRD)
	OVERHEAD TRANSMISSION LINE 1130 LINE (COMPO)
	OVERHEAD TRANSMISSION LINE 91001 LINE (ASH CREEK)
	UNDERGROUND TRANSMISSION LINE 1955 LINE (SINGER)
	UNDERGROUND TRANSMISSION LINE 1710 LINE (DEVON-OLD TOWN)
	UNDERGROUND TRANSMISSION LINE 1697 LINE (TRUMBULL)
	METRO-NORTH/AMTRAK RAILROAD BOUNDARY LINE
	EXISTING TRANSMISSION STRUCTURE
	NEW TRANSMISSION STRUCTURE
<b>NOTE:</b> DASHED LINES REPRESENT NEW 115KV LINE EXTENSIONS TO NEW SUBSTATION	



METRO-NORTH/AMTRAK RAILROAD CORRIDOR

BRIDGEPORT HARBOR

WEBSTER BANK ARENA

HARBOR YARD AMPHITHEATER

ORIGINAL PROPOSED REMOVALS

PSEG BRIDGEPORT HARBOR STATION

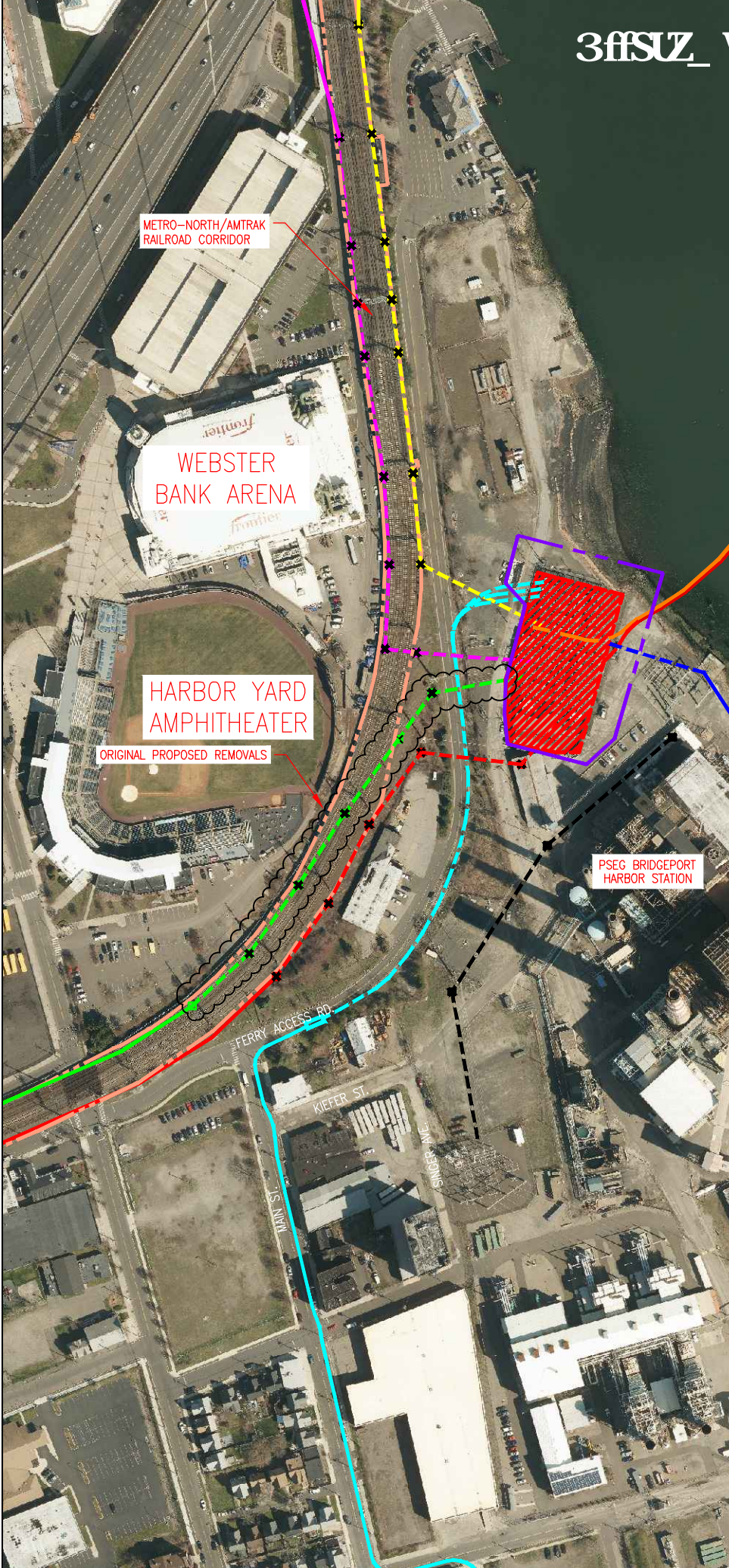
## THE UNITED ILLUMINATING COMPANY PEQUONNOCK SUBSTATION REBUILD PROJECT EXISTING SUBSTATION AND 115KV LINE FACILITIES TO BE REMOVED

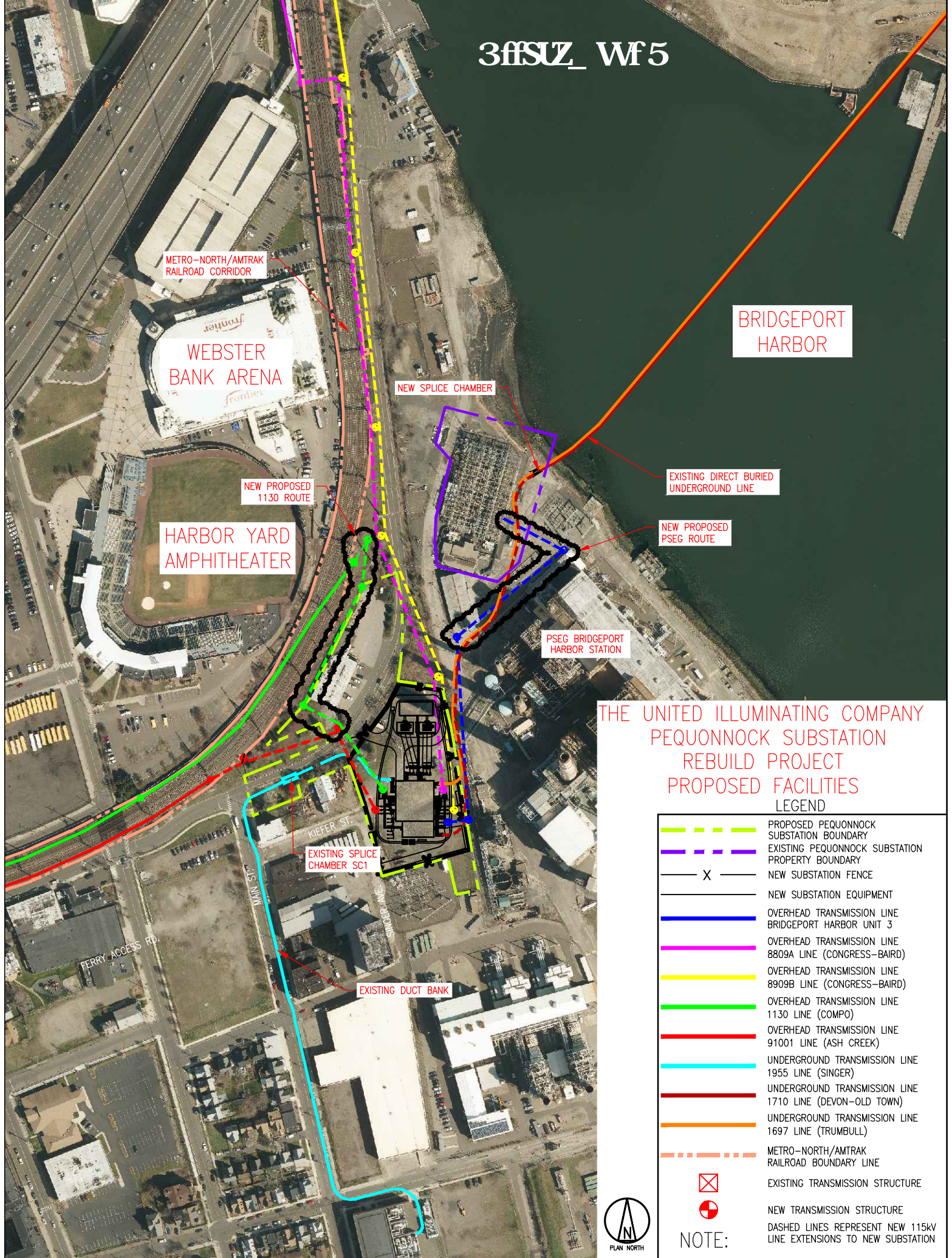
### LEGEND

	OVERHEAD TRANSMISSION LINE BRIDGEPORT ENERGY LINE (NOT IN SERVICE)
	OVERHEAD TRANSMISSION LINE BRIDGEPORT HARBOR UNIT 3
	OVERHEAD TRANSMISSION LINE 8809A LINE (CONGRESS-BAIRD)
	OVERHEAD TRANSMISSION LINE 8909B LINE (CONGRESS-BAIRD)
	OVERHEAD TRANSMISSION LINE 1130 LINE (COMPO)
	OVERHEAD TRANSMISSION LINE 91001 LINE (ASH CREEK)
	UNDERGROUND TRANSMISSION LINE 1955 LINE (SINGER)
	UNDERGROUND TRANSMISSION LINE 1710 LINE (DEVON-OLD TOWN)
	UNDERGROUND TRANSMISSION LINE 1697 LINE (TRUMBULL)
	METRO-NORTH/AMTRAK RAILROAD BOUNDARY LINE
	EXISTING PEQUONNOCK SUBSTATION PROPERTY BOUNDARY
	EXISTING TRANSMISSION STRUCTURE TO BE REMOVED
	EXISTING SUBSTATION EQUIPMENT TO BE REMOVED



NOTE: DASHED LINES REPRESENT EXISTING 115KV LINE EXTENSIONS TO BE REMOVED





METRO-NORTH/AMTRAK RAILROAD CORRIDOR

WEBSTER BANK ARENA

NEW PROPOSED 1130 ROUTE

HARBOR YARD AMPHITHEATER

NEW SPLICE CHAMBER

EXISTING DIRECT BURIED UNDERGROUND LINE

NEW PROPOSED PSEG ROUTE

PSEG BRIDGEPORT HARBOR STATION



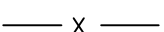
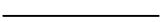











EXISTING SPLICE CHAMBER SC1

EXISTING DUCT BANK

BRIDGEPORT HARBOR

THE UNITED ILLUMINATING COMPANY  
 PEQUONNOCK SUBSTATION  
 REBUILD PROJECT  
 PROPOSED FACILITIES

LEGEND

-  PROPOSED PEQUONNOCK SUBSTATION BOUNDARY
-  EXISTING PEQUONNOCK SUBSTATION PROPERTY BOUNDARY
-  NEW SUBSTATION FENCE
-  NEW SUBSTATION EQUIPMENT
-  OVERHEAD TRANSMISSION LINE BRIDGEPORT HARBOR UNIT 3
-  OVERHEAD TRANSMISSION LINE 8809A LINE (CONGRESS-BAIRD)
-  OVERHEAD TRANSMISSION LINE 8909B LINE (CONGRESS-BAIRD)
-  OVERHEAD TRANSMISSION LINE 1130 LINE (COMPO)
-  OVERHEAD TRANSMISSION LINE 91001 LINE (ASH CREEK)
-  UNDERGROUND TRANSMISSION LINE 1955 LINE (SINGER)
-  UNDERGROUND TRANSMISSION LINE 1710 LINE (DEVON-OLD TOWN)
-  UNDERGROUND TRANSMISSION LINE 1697 LINE (TRUMBULL)
-  METRO-NORTH/AMTRAK RAILROAD BOUNDARY LINE
-  EXISTING TRANSMISSION STRUCTURE
-  NEW TRANSMISSION STRUCTURE



NOTE:

DASHED LINES REPRESENT NEW 115KV LINE EXTENSIONS TO NEW SUBSTATION

# Attachment D

METRO-NORTH/AMTRAK RAILROAD CORRIDOR

BRIDGEPORT HARBOR

WEBSTER BANK ARENA

NEW PROPOSED 1130 REMOVALS

HARBOR YARD AMPHITHEATER

PSEG BRIDGEPORT HARBOR STATION

THE UNITED ILLUMINATING COMPANY PEQUONNOCK SUBSTATION REBUILD PROJECT EXISTING SUBSTATION AND 115KV LINE FACILITIES TO BE REMOVED

### LEGEND

	OVERHEAD TRANSMISSION LINE BRIDGEPORT ENERGY LINE (NOT IN SERVICE)
	OVERHEAD TRANSMISSION LINE BRIDGEPORT HARBOR UNIT 3
	OVERHEAD TRANSMISSION LINE 8809A LINE (CONGRESS-BAIRD)
	OVERHEAD TRANSMISSION LINE 8909B LINE (CONGRESS-BAIRD)
	OVERHEAD TRANSMISSION LINE 1130 LINE (COMPO)
	OVERHEAD TRANSMISSION LINE 91001 LINE (ASH CREEK)
	UNDERGROUND TRANSMISSION LINE 1955 LINE (SINGER)
	UNDERGROUND TRANSMISSION LINE 1710 LINE (DEVON-OLD TOWN)
	UNDERGROUND TRANSMISSION LINE 1697 LINE (TRUMBULL)
	METRO-NORTH/AMTRAK RAILROAD BOUNDARY LINE
	EXISTING PEQUONNOCK SUBSTATION PROPERTY BOUNDARY
	EXISTING TRANSMISSION STRUCTURE TO BE REMOVED
	EXISTING SUBSTATION EQUIPMENT TO BE REMOVED



NOTE: DASHED LINES REPRESENT EXISTING 115KV LINE EXTENSIONS TO BE REMOVED

