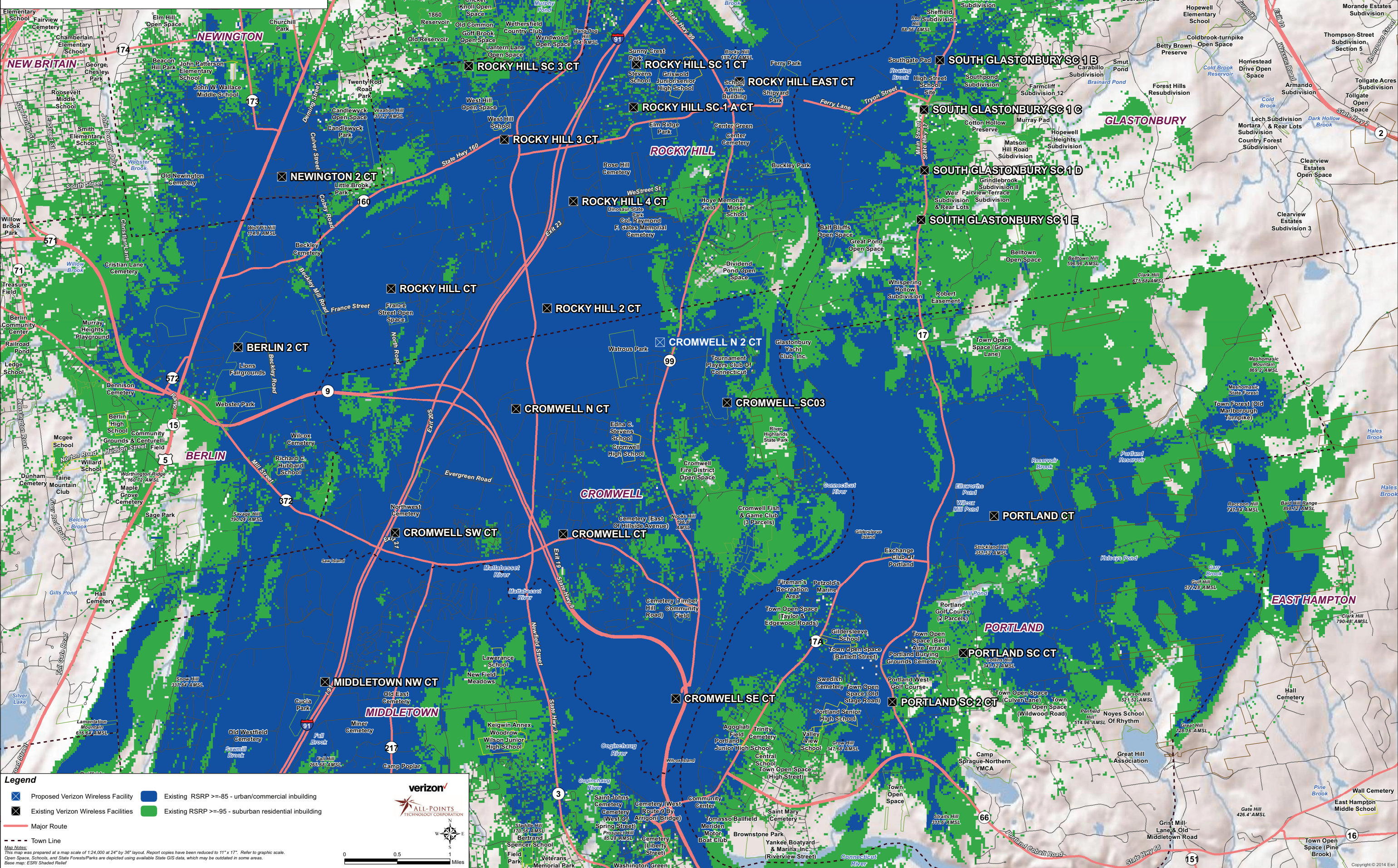


**Existing Verizon Wireless 700 MHz Coverage
Cromwell, Connecticut and Surrounding Area
(*Map Scale is 1:24,000)**



Legend

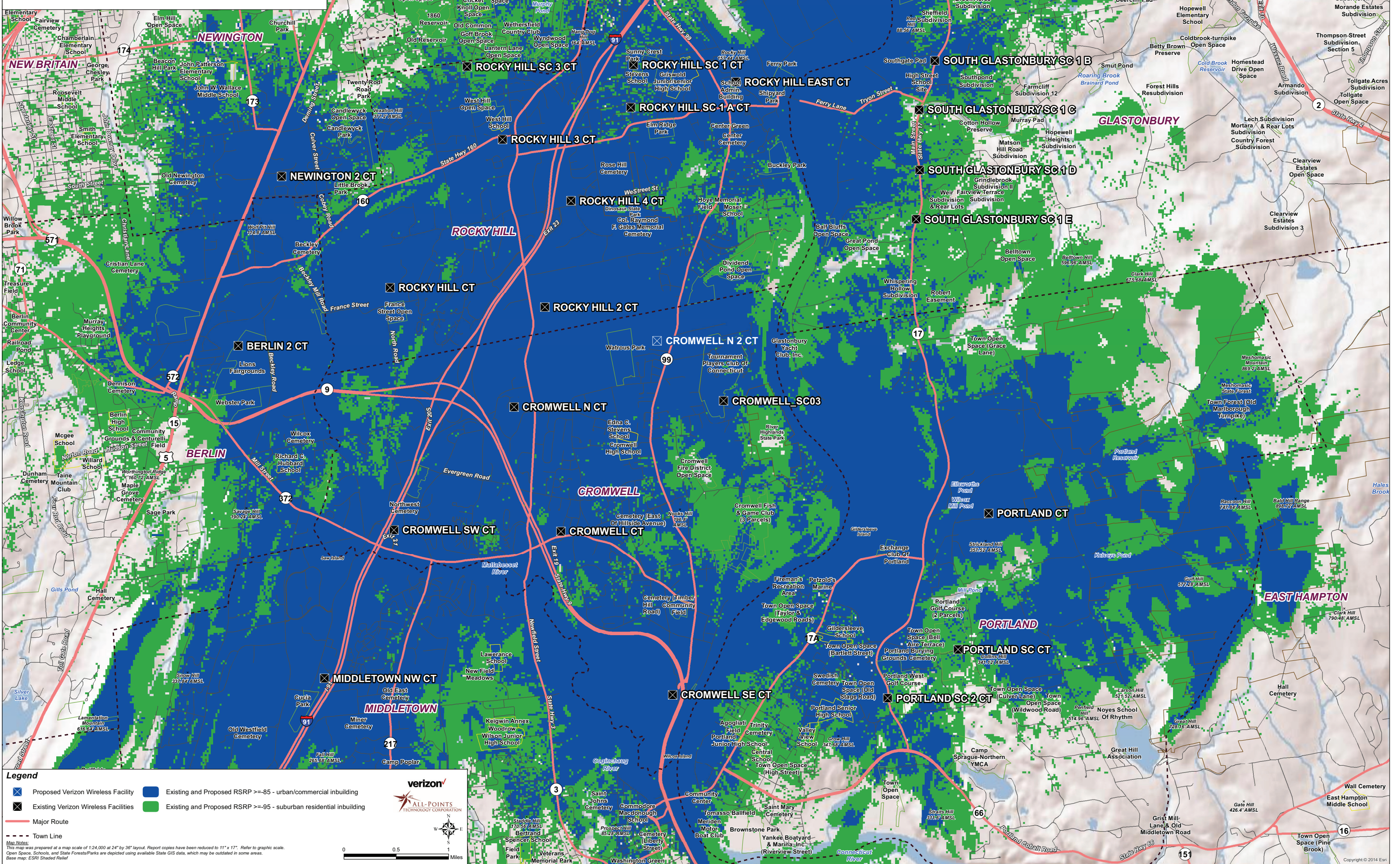
- Proposed Verizon Wireless Facility
- Existing RSRP >= 85 - urban/commercial building
- Existing Verizon Wireless Facilities
- Existing RSRP >= 95 - suburban residential building
- Major Route
- - - Town Line

Map Notes:
This map was prepared at a map scale of 1:24,000 at 24" by 36" layout. Report copies have been reduced to 11" x 17". Refer to graphic scale.
Open Spaces, Schools, and State Forests/Parks are depicted using available State GIS data, which may be outdated in some areas.
Base map: ESRI Shaded Relief

Verizon
ALL-POINTS
TECHNOLOGY CORPORATION

0 0.5 1 Miles

**Existing and Proposed Verizon Wireless 700 MHz Coverage
Cromwell, Connecticut and Surrounding Area
(*Map Scale is 1:24,000)**



Legend

- Proposed Verizon Wireless Facility
- Existing and Proposed RSRP >= -85 - urban/commercial inbuilding
- Existing and Proposed RSRP >= -95 - suburban residential inbuilding
- Existing Verizon Wireless Facilities
- Major Route
- Town Line

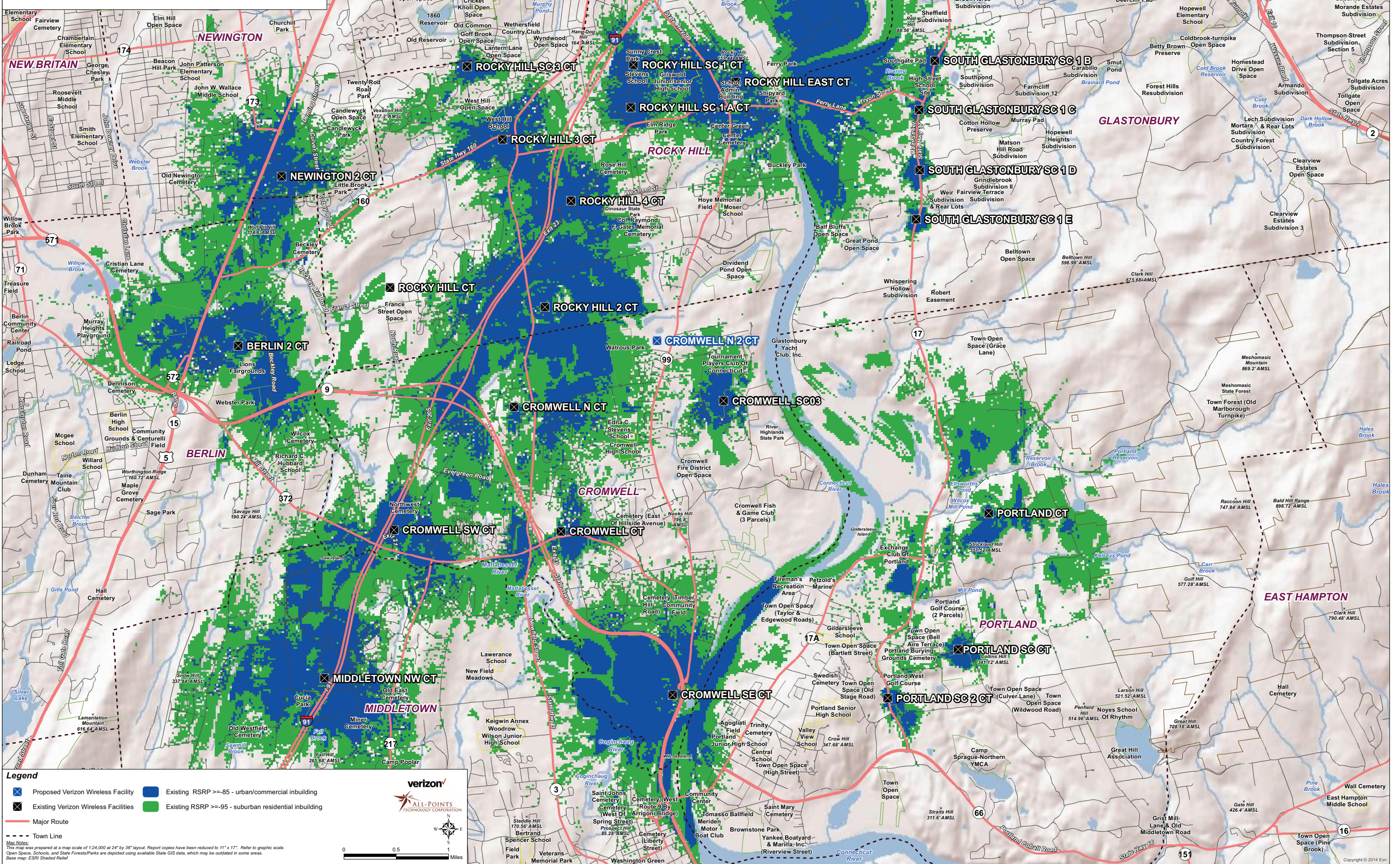
Map Notes:
This map was prepared at a map scale of 1:24,000 at 24" by 36" layout. Report copies have been reduced to 11" x 17". Refer to graphic scale. Open Spaces, Schools, and State Forests/Parks are depicted using available State GIS data, which may be outdated in some areas. Base map: ESRI Shaded Relief.

Scale: 0 0.5 1 Miles

Verizon
ALL-POINTS TECHNOLOGY CORPORATION

Copyright © 2014 Esri

**Existing Verizon Wireless 2100 MHz Coverage
Cromwell, Connecticut and Surrounding Area
(*Map Scale is 1:24,000)**



Legend

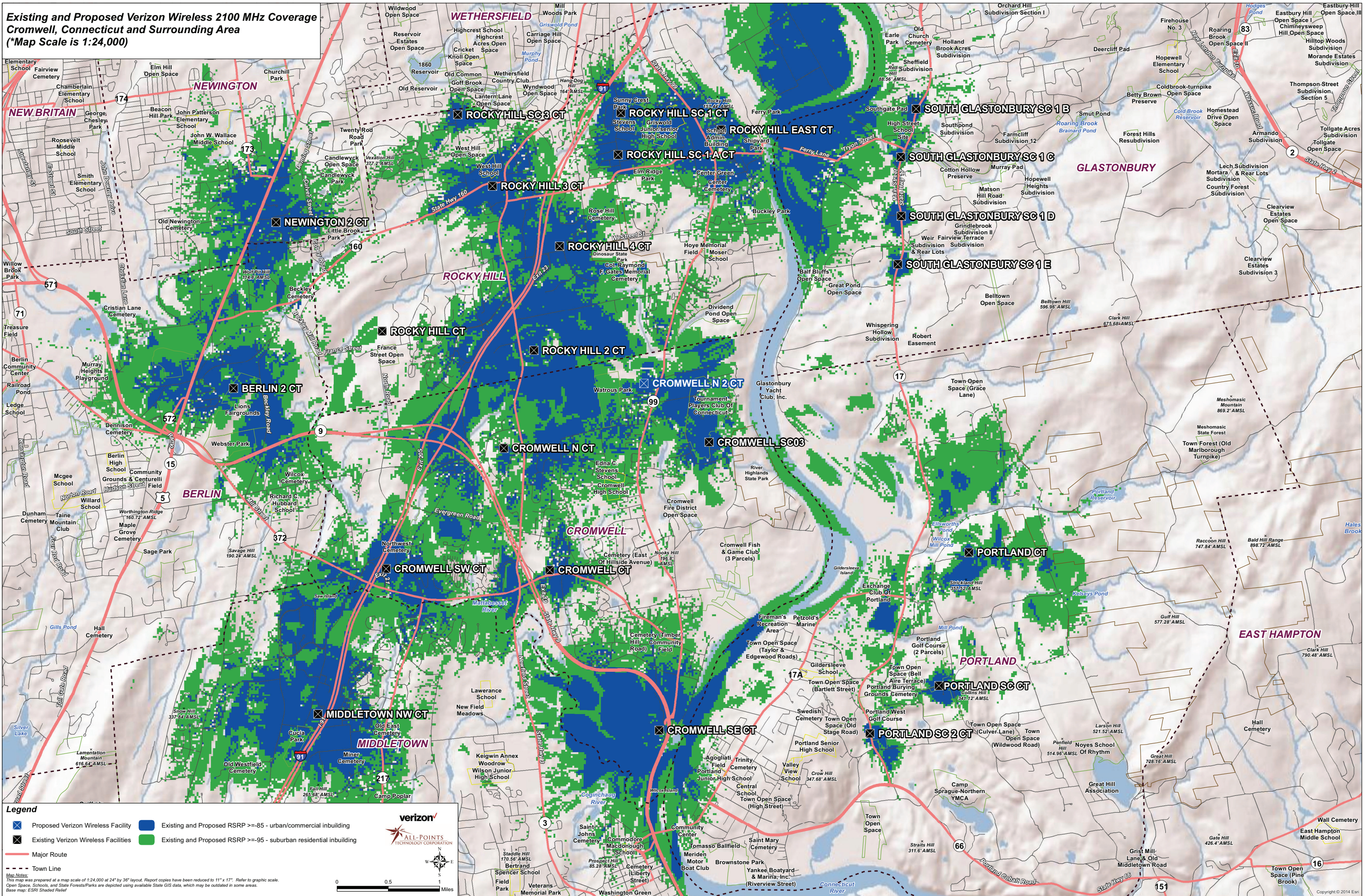
- Proposed Verizon Wireless Facility
- Existing Verizon Wireless Facilities
- Major Route
- Town Line
- Existing RSRP >= 85 - urban/commercial inbuilding
- Existing RSRP >= 95 - suburban residential inbuilding

Map Notes:
This map was prepared at a map scale of 1:24,000 at 24" by 36" layout. Report copies have been reduced to 11" x 17". Refer to graphic scale.
Open Spaces, Schools, and State Forests/Parks are depicted using available State GIS data, which may be outdated in some areas.
Base map: ESRI Shaded Relief

verizon
ALL-POINTS
TECHNOLOGY CORPORATION

Copyright © 2014 Esri

**Existing and Proposed Verizon Wireless 2100 MHz Coverage
Cromwell, Connecticut and Surrounding Area
(*Map Scale is 1:24,000)**



Legend

- Proposed Verizon Wireless Facility
- Existing and Proposed RSRP >= 85 - urban/commercial inbuilding
- Existing Verizon Wireless Facilities
- Existing and Proposed RSRP >= 95 - suburban residential inbuilding
- Major Route
- - - Town Line

Map Notes:
This map was prepared at a map scale of 1:24,000 at 24" by 36" layout. Report copies have been reduced to 11" x 17". Refer to graphic scale.
Open Spaces, Schools, and State Forests/Parks are depicted using available State GIS data, which may be outdated in some areas.
Base map: ESRI Shaded Relief

verizon
ALL-POINTS
TECHNOLOGY CORPORATION

0 0.5 1 Miles

Copyright © 2014 Esri