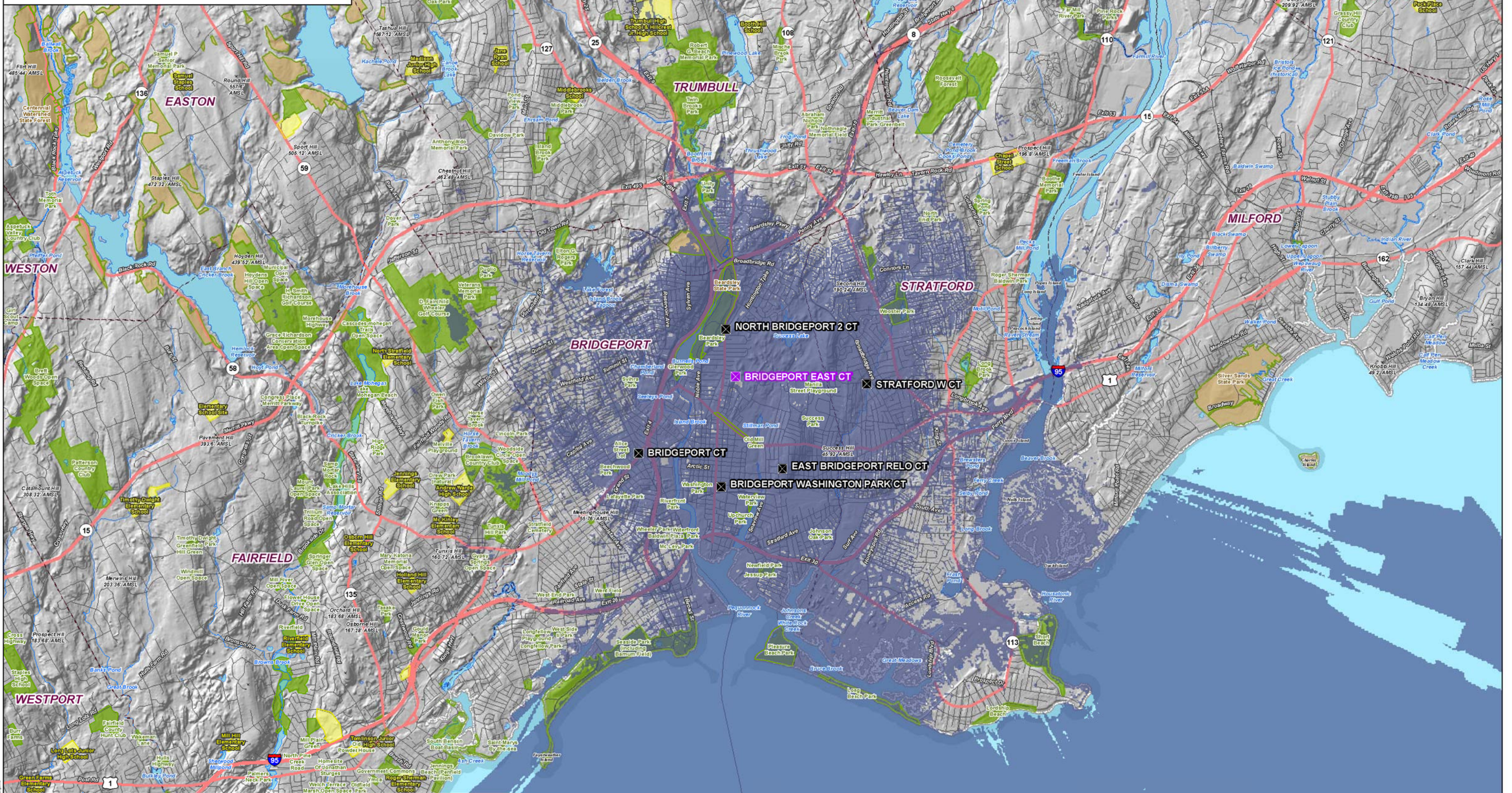


**Existing Verizon Wireless 700 MHz Coverage  
Bridgeport, Connecticut and Surrounding Area  
(\*Map Scale is 1:30,000)**

Coverage is depicted at a signal threshold of 120 dB Operational Path Loss



**Legend**

- ✖ Proposed Verizon Wireless Facility
- ✖ Existing Verizon Wireless Facilities
- Existing Surrounding Wireless 700 MHz Coverage
- Municipal and Private Open Space
- School
- State Forest/Park
- Open Water
- Town Line
- Major Route

**Map Notes**  
This map was prepared at a map scale of 1:30,000 at 24" by 36" layout. Report copies have been reduced to 11" x 17". Refer to graphic scale. Open Space, Schools, and State Forest/Parks are depicted using available State GIS data, which may be outdated in some areas. Base map: CT/ECO Hillshade (2000)

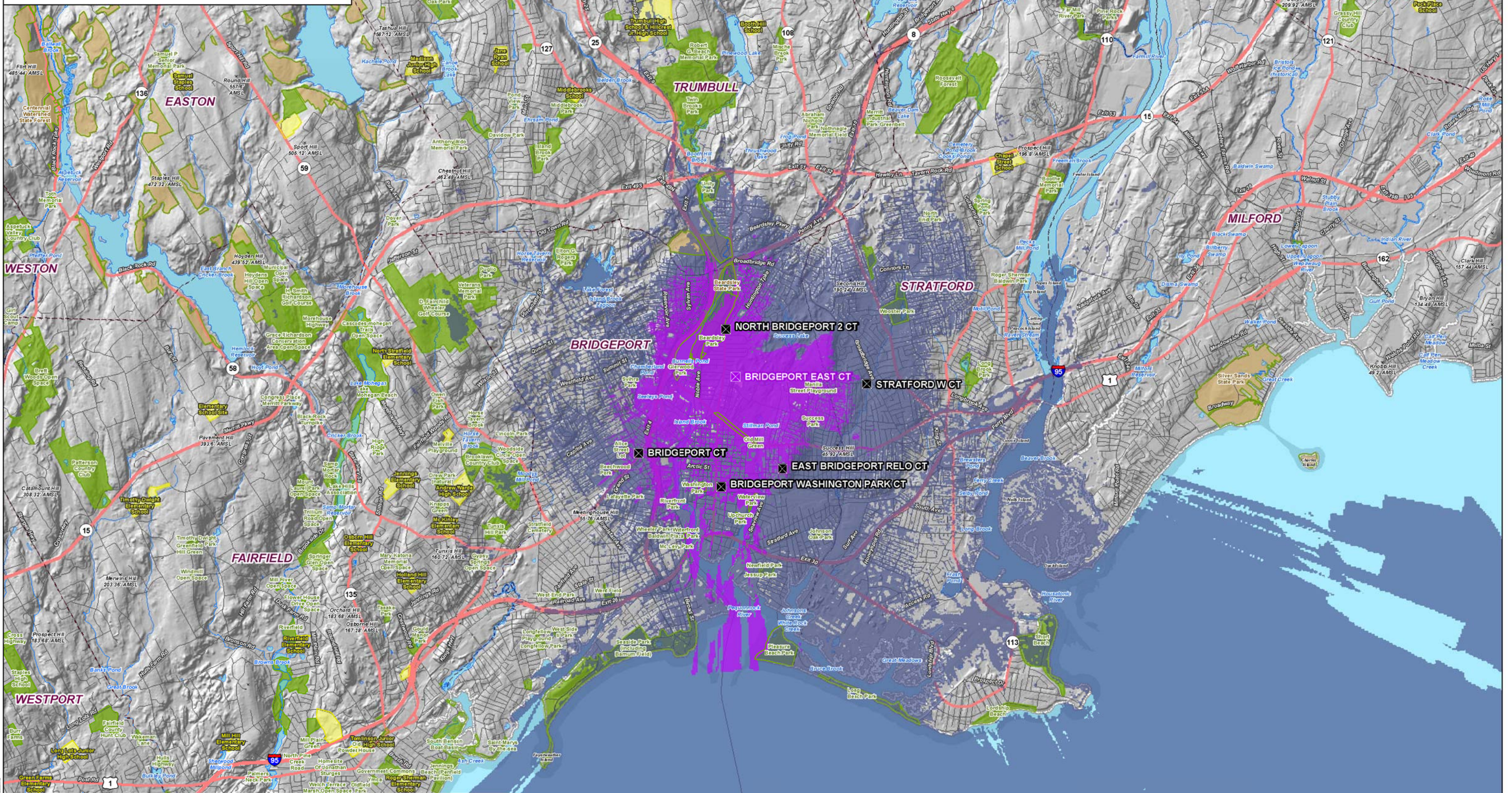
**Scale:** 0 0.75 1.5 Miles

**Logos:** ALL-POINTS TECHNOLOGY CORPORATION, verizon



**Proposed Verizon Wireless 700 MHz Coverage  
Bridgeport, Connecticut and Surrounding Area  
(\*Map Scale is 1:30,000)**

Coverage is depicted at a signal threshold of 120 dB Operational Path Loss



**Legend**

- Proposed Verizon Wireless Facility
- Existing Verizon Wireless Facilities
- Existing Surrounding Wireless 700 MHz Coverage
- Proposed Facility Wireless 700 MHz Coverage
- Municipal and Private Open Space
- School
- State Forest/Park
- Open Water
- Town Line
- Major Route

**Map Notes**  
This map was prepared at a map scale of 1:30,000 at 24" by 36" layout. Report copies have been reduced to 11" x 17". Refer to graphic scale. Open Space, Schools, and State Forest/Parks are depicted using available State GIS data, which may be outdated in some areas. Base map: CT/ECO Hillshade (2000)

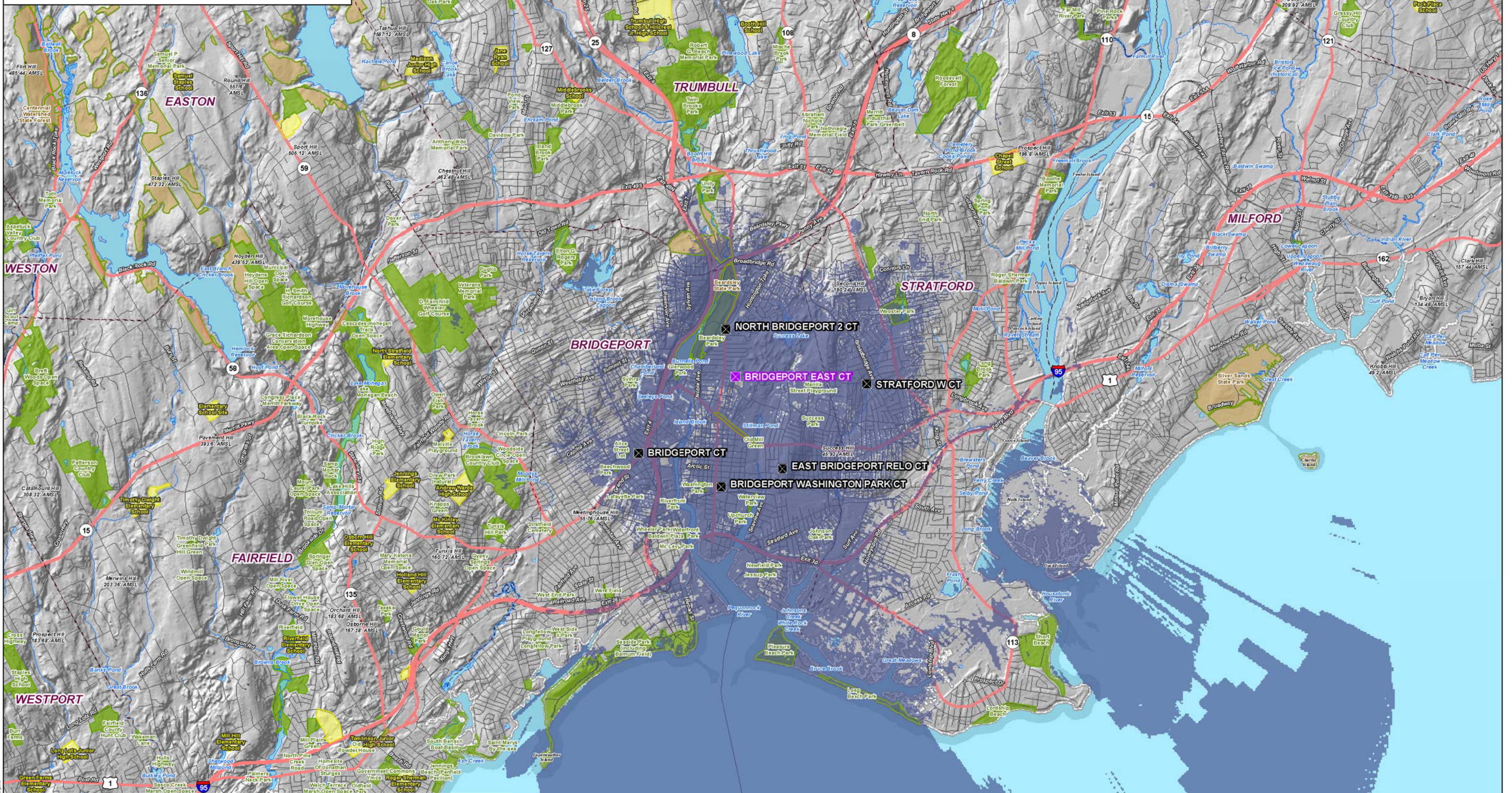
**Scale:** 0 0.75 1.5 Miles

**Logos:** ALL-POINTS TECHNOLOGY CORPORATION, verizon



**Existing Verizon Wireless 850 MHz Coverage  
Bridgeport, Connecticut and Surrounding Area  
(\*Map Scale is 1:30,000)**

Coverage is depicted at a signal threshold of 120 dB Operational Path Loss



**Legend**

- X Proposed Verizon Wireless Facility
- Municipal and Private Open Space
- Open Water
- X Existing Verizon Wireless Facilities
- School
- Town Line
- Existing Surrounding Wireless 850 MHz Coverage
- State Forest/Park
- Major Route

**Map Notes**  
This map was prepared at a map scale of 1:30,000 at 24" by 36" layout. Report copies have been reduced to 11" x 17". Refer to graphic scale. Open Space, Schools, and State Forest/Parks are depicted using available State GIS data, which may be different in some areas. Base map: CT/ECO Hillshade (2000)

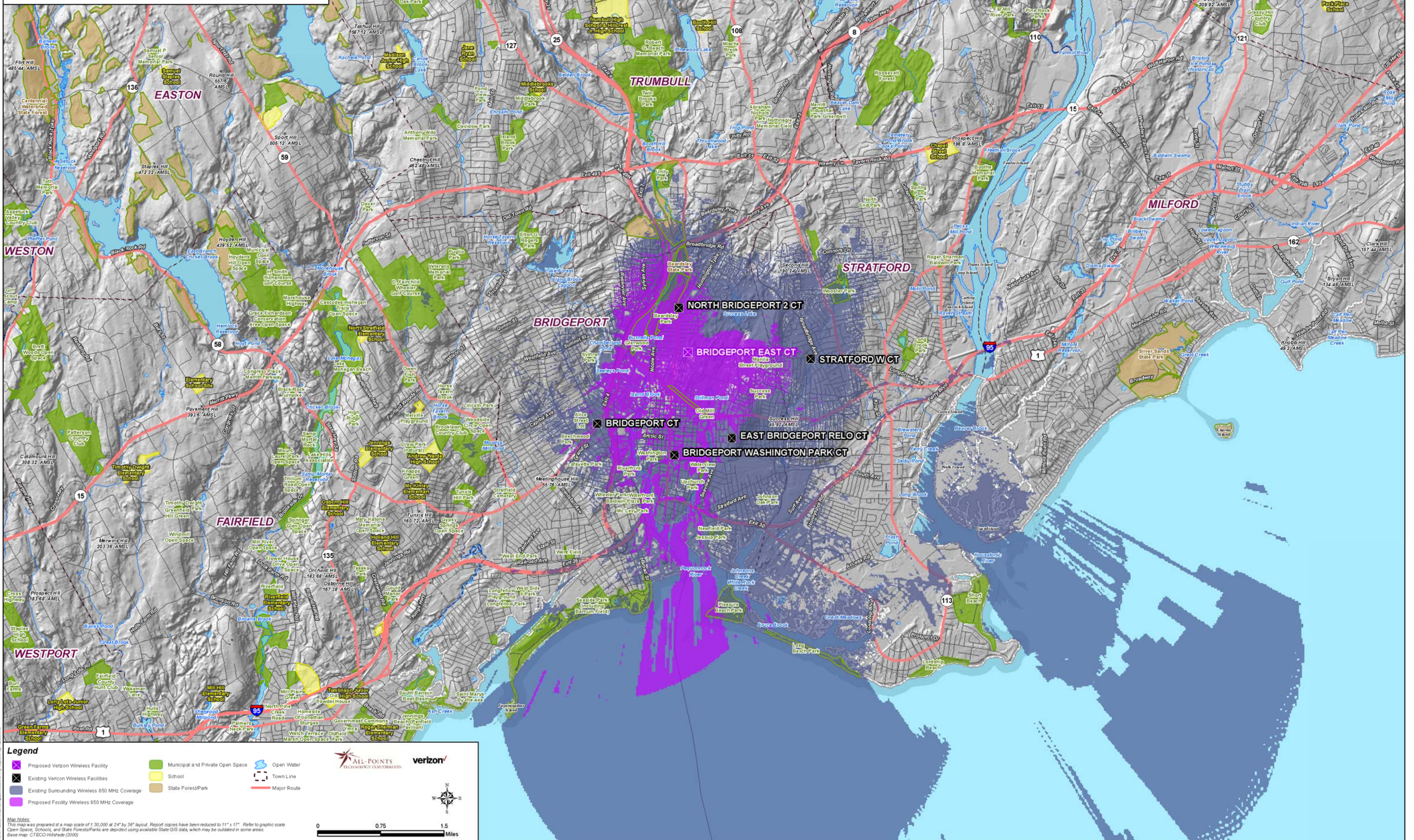
0 0.75 1.5 Miles

©2010 Verizon Wireless. All rights reserved. This map is a service mark of Verizon Wireless.



**Proposed Verizon Wireless 850 MHz Coverage  
Bridgeport, Connecticut and Surrounding Area  
(\*Map Scale is 1:30,000)**

Coverage is depicted at a signal threshold of 120 dB Operational Path Loss



**Legend**

- ✖ Proposed Verizon Wireless Facility
- ✖ Existing Verizon Wireless Facilities
- Existing Surrounding Wireless 850 MHz Coverage
- Proposed Facility Wireless 850 MHz Coverage
- Municipal and Private Open Space
- School
- State Forest/Park
- Open Water
- Town Line
- Major Route

**Map Notes**  
This map was prepared at a map scale of 1:30,000 at 24" by 36" layout. Report copies have been reduced to 11" x 17". Refer to graphic scale. Open Space, Schools, and State Forest/Parks are depicted using available State GIS data, which may be different in some areas. Base map: CT/ECO Hillshade (2000)

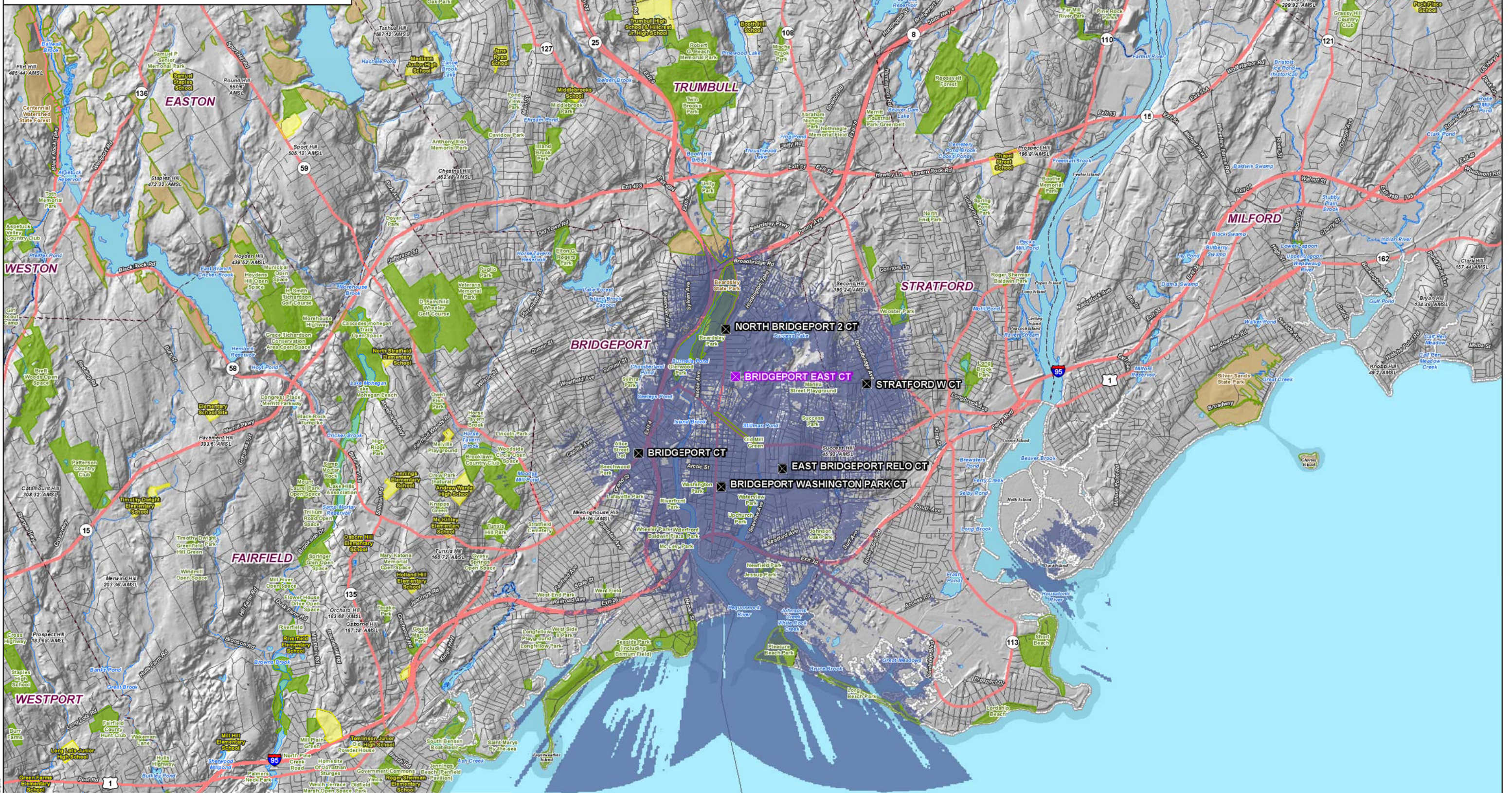
**Scale:** 0 0.75 1.5 Miles

**Logos:** ALL-POINTS TECHNOLOGY CORPORATION, verizon



**Existing Verizon Wireless 1900 MHz Coverage  
Bridgeport, Connecticut and Surrounding Area  
(\*Map Scale is 1:30,000)**

Coverage is depicted at a signal threshold of 120 dB Operational Path Loss



**Legend**

- X Proposed Verizon Wireless Facility
- X Existing Verizon Wireless Facilities
- Existing Surrounding Wireless 1900 MHz Coverage
- Municipal and Private Open Space
- School
- State Forest/Park
- Open Water
- Town Line
- Major Route

**Map Notes**  
This map was prepared at a map scale of 1:30,000 at 24" by 36" layout. Report copies have been reduced to 11" x 17". Refer to graphic scale. Open Space, Schools, and State Forest/Parks are depicted using available State GIS data, which may be outdated in some areas. Base map: CT/ECO Hillshade (2000)

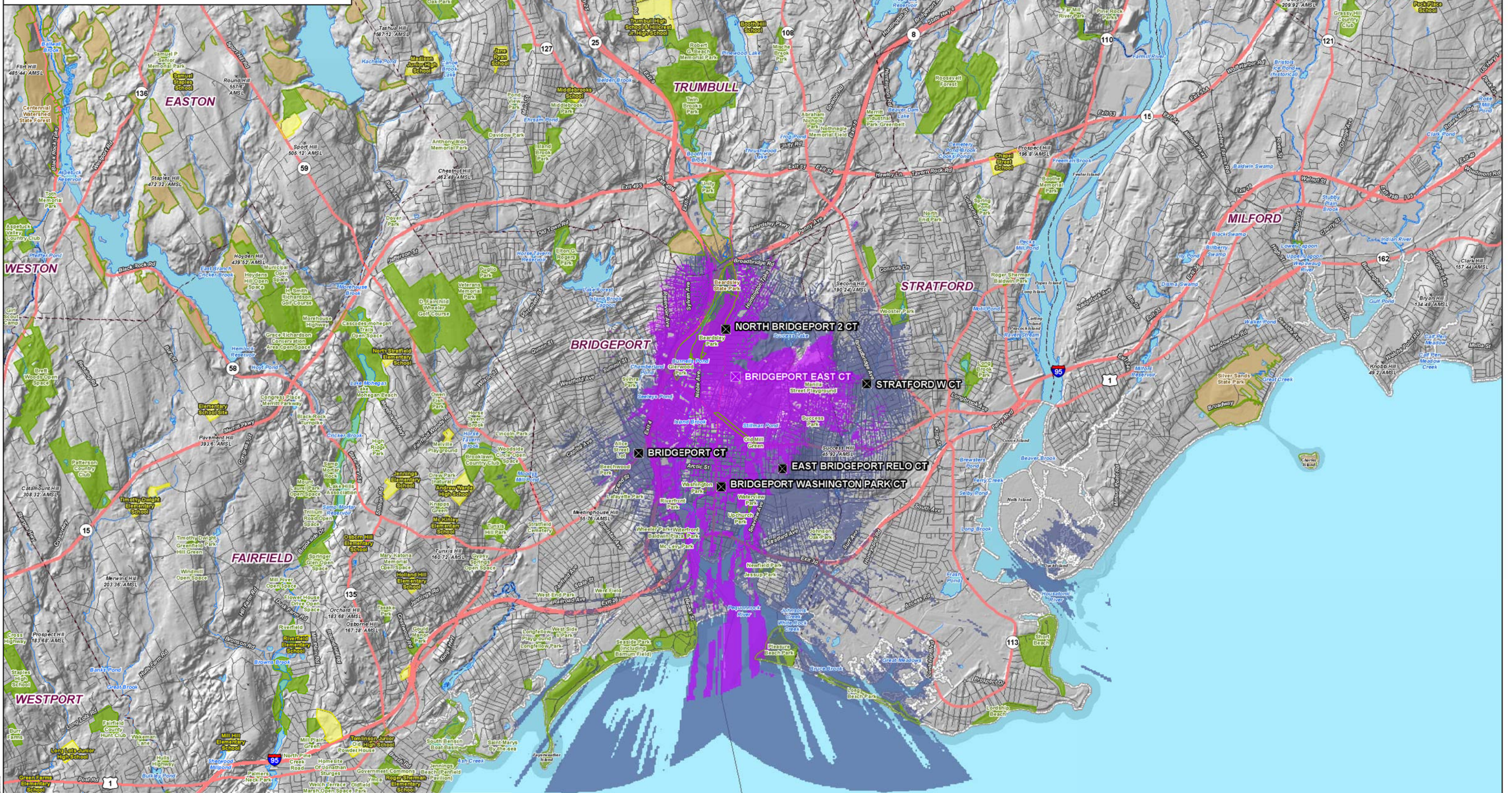
**Scale:** 0 0.75 1.5 Miles

**Logos:** ALL-POINTS TECHNOLOGY CORPORATION, verizon



**Proposed Verizon Wireless 1900 MHz Coverage  
Bridgeport, Connecticut and Surrounding Area  
(\*Map Scale is 1:30,000)**

Coverage is depicted at a signal threshold of 120 dB Operational Path Loss



**Legend**

- Proposed Verizon Wireless Facility
- Municipal and Private Open Space
- Open Water
- School
- State Forest/Park
- Existing Verizon Wireless Facilities
- Existing Surrounding Wireless 1900 MHz Coverage
- Proposed Facility Wireless 1900 MHz Coverage
- Town Line
- Major Route

**Map Notes**  
This map was prepared at a map scale of 1:30,000 at 24" by 36" layout. Report copies have been reduced to 11" x 17". Refer to graphic scale. Open Space, Schools, and State Forest/Parks are depicted using available State GIS data, which may be outdated in some areas. Base map: CT/CO Hillshade (2000)

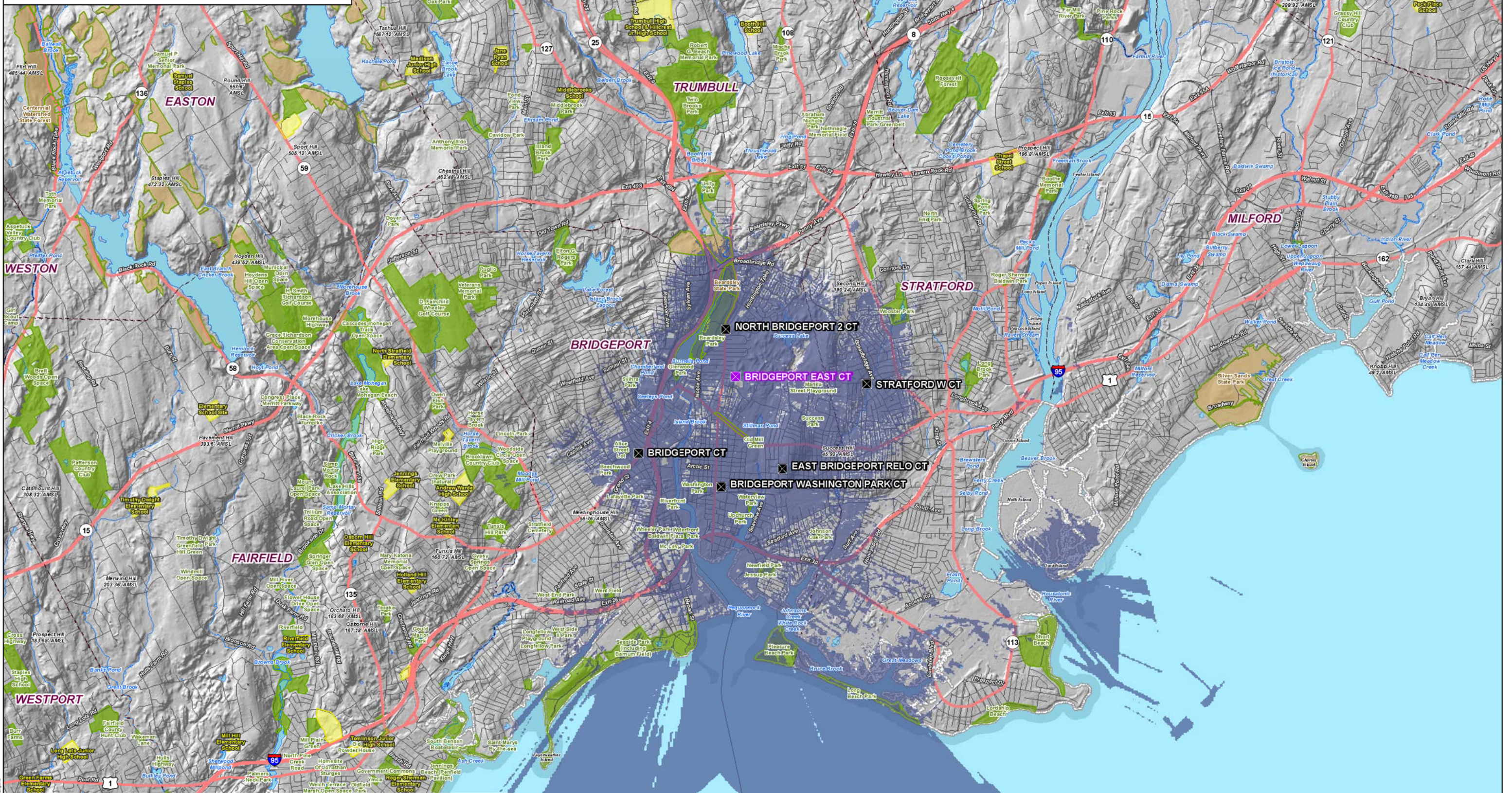
0 0.75 1.5 Miles

©2009 Verizon Wireless. All rights reserved.



**Existing Verizon Wireless 2100 MHz Coverage  
Bridgeport, Connecticut and Surrounding Area  
(\*Map Scale is 1:30,000)**

Coverage is depicted at a signal threshold of 120 dB Operational Path Loss



**Legend**

- ✖ Proposed Verizon Wireless Facility
- ✖ Existing Verizon Wireless Facilities
- Existing Surrounding Wireless 2100 MHz Coverage
- Municipal and Private Open Space
- School
- State Forest/Park
- Open Water
- Town Line
- Major Route

**Map Notes**  
This map was prepared at a map scale of 1:30,000 at 24" by 36" layout. Report copies have been reduced to 11" x 17". Refer to graphic scale. Open Space, Schools, and State Forest/Parks are depicted using available State GIS data, which may be outdated in some areas. Base map: CT/CO Hillshade (2000)

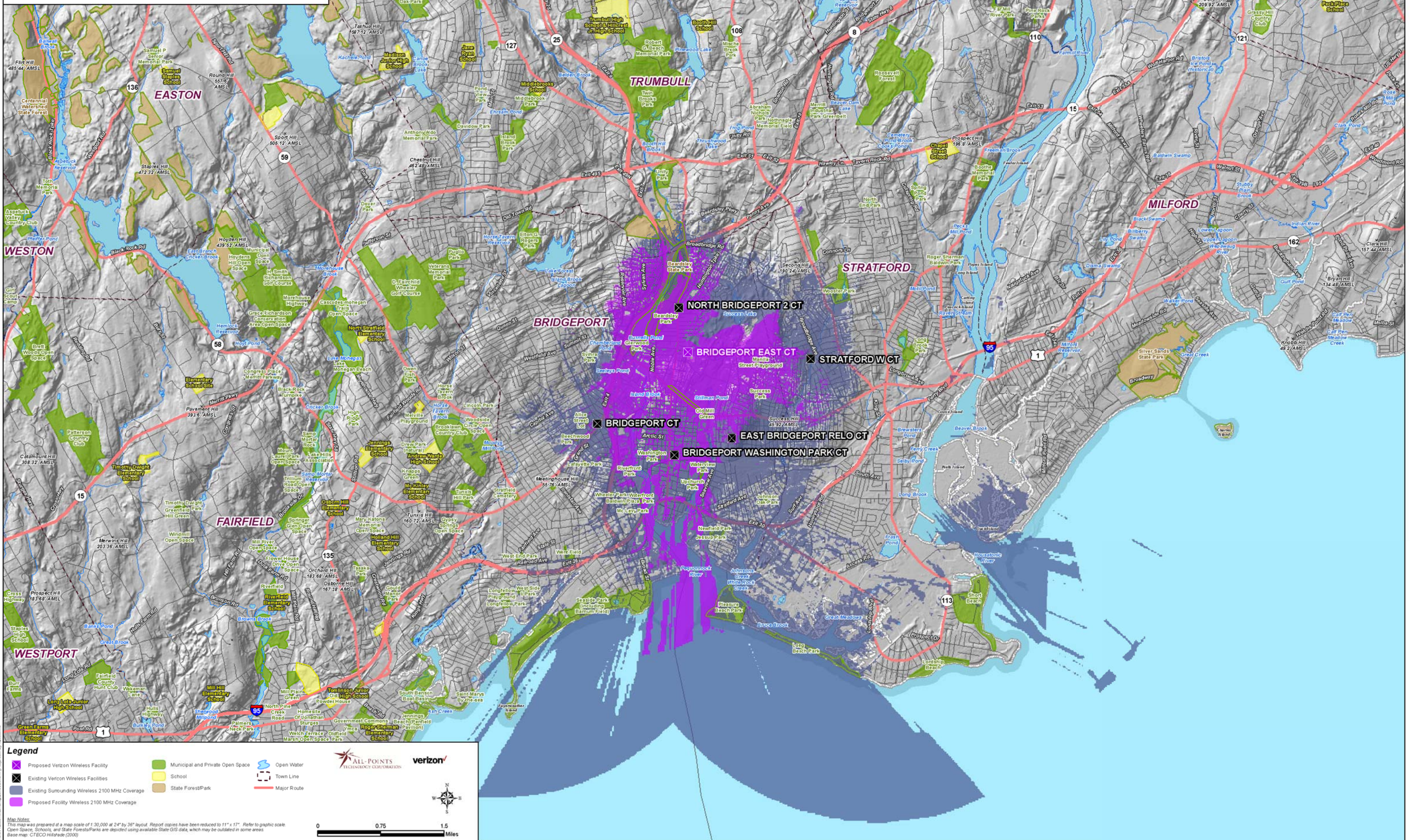
**Scale:** 0 0.75 1.5 Miles

**Logos:** ALL-POINTS TECHNOLOGY CORPORATION, verizon



**Proposed Verizon Wireless 2100 MHz Coverage  
Bridgeport, Connecticut and Surrounding Area  
(\*Map Scale is 1:30,000)**

Coverage is depicted at a signal threshold of 120 dB Operational Path Loss



**Legend**

- Proposed Verizon Wireless Facility
- Existing Verizon Wireless Facilities
- Existing Surrounding Wireless 2100 MHz Coverage
- Proposed Facility Wireless 2100 MHz Coverage
- Municipal and Private Open Space
- School
- State Forest/Park
- Open Water
- Town Line
- Major Route

**Map Notes**  
This map was prepared at a map scale of 1:30,000 at 24" by 36" layout. Report copies have been reduced to 11" x 17". Refer to graphic scale. Open Space, Schools, and State Forest/Parks are depicted using available State GIS data, which may be outdated in some areas. Base map: CT/CO Hillshade (2000)

0 0.75 1.5 Miles