



**PRELIMINARY HISTORIC  
RESOURCES DETERMINATION**

**April 17, 2017**

**Verizon Wireless  
99 East River Drive  
East Hartford, CT 06108**

**APT Project No.: CT1418090**

**Re: Proposed Canterbury South Facility  
46 Cemetery Road  
Canterbury, Connecticut**

On behalf of Verizon Wireless, All-Points Technology Corporation, P.C. ("APT") performed an evaluation with respect to the proposed Facility's potential impacts on historic resources proximate to the referenced project site.

The results of our independent review of sites listed, or eligible for listing, on the National Register of Historic Places ("NRHP") reveals that no such resources are located within one-half mile of the site.<sup>1</sup> Further, no state-registered or locally designated historic sites are located proximate to the project site. An historic resource screening map is provided as an attachment.

As part of Verizon Wireless' due diligence for compliance with the National Environmental Policy Act ("NEPA"), APT is currently compiling applicable historic documentation for submission to the State Historic Preservation Office ("SHPO") for this agency's review and determination. The SHPO submission will be prepared by a qualified architectural historian that meets criteria developed by the Secretary of the Interior.

Based on our research, it is APT's opinion that the proposed Facility would have no effect on historic properties listed or eligible for listing on the NRHP.

A copy of the SHPO's response will be provided to the Siting Council upon receipt.

Sincerely,

A handwritten signature in cursive script that reads "Michael Libertine".

Michael Libertine,  
Director of Siting and Permitting

Attachments

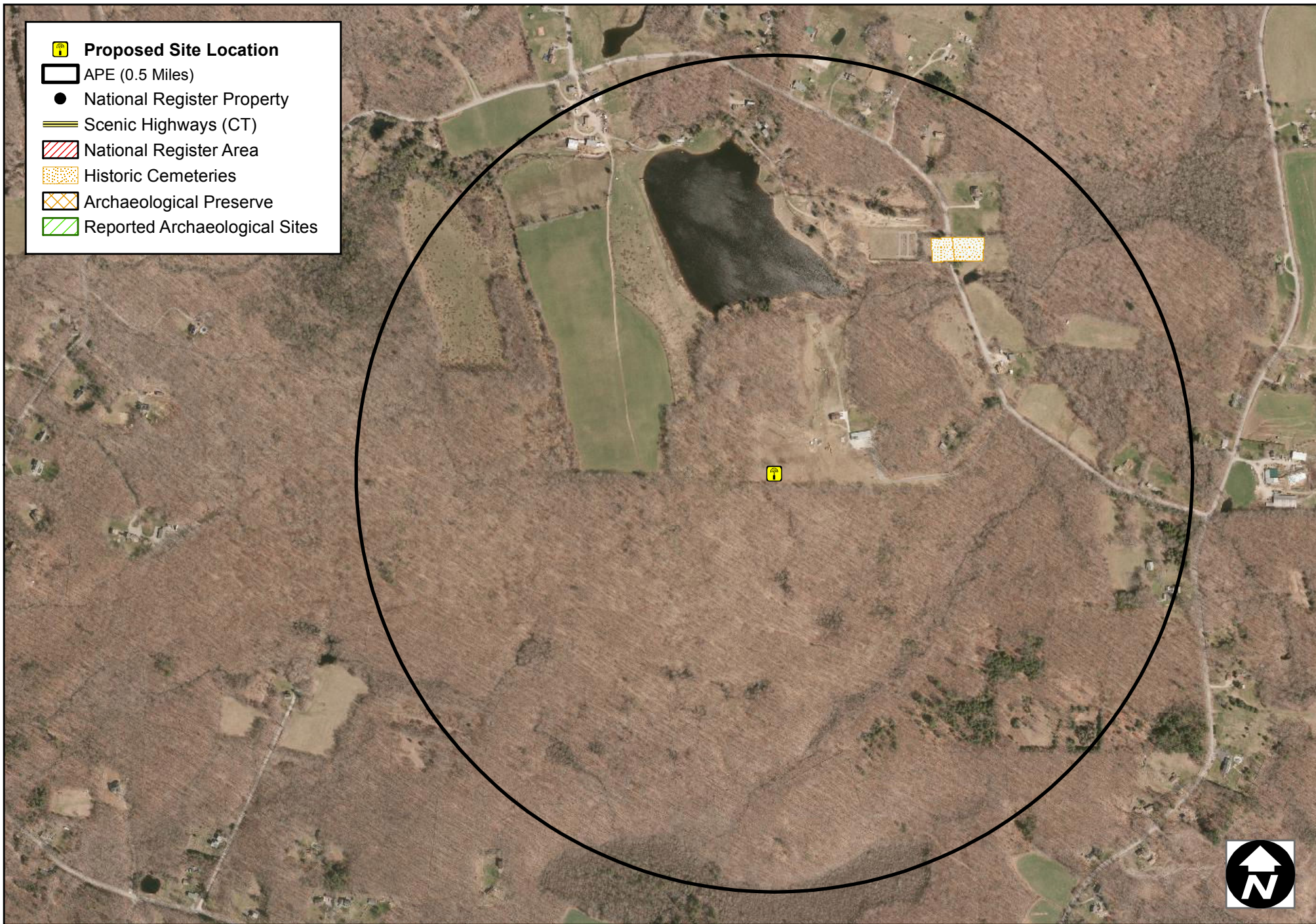
---









<sup>1</sup> For towers under 200 feet tall, the Area of Potential Effect ("APE") has been established at 0.5 mile. This distance represents the APE established cooperatively by the Federal Communications Commission, Advisory Council on Historic Preservation and the National Conference of State Historic Preservation Officers.

# Historic Resource Screening Maps

---





-  **Proposed Site Location**
-  APE (0.5 Miles)
-  National Register Property
-  Scenic Highways (CT)
-  National Register Area
-  Historic Cemeteries
-  Archaeological Preserve
-  Reported Archaeological Sites

Cultural Resources Screen  
**CT1418090** - 46 Cemetery Road Canterbury CT  
 April 17, 2017 \ USGS QUAD:Scotland

