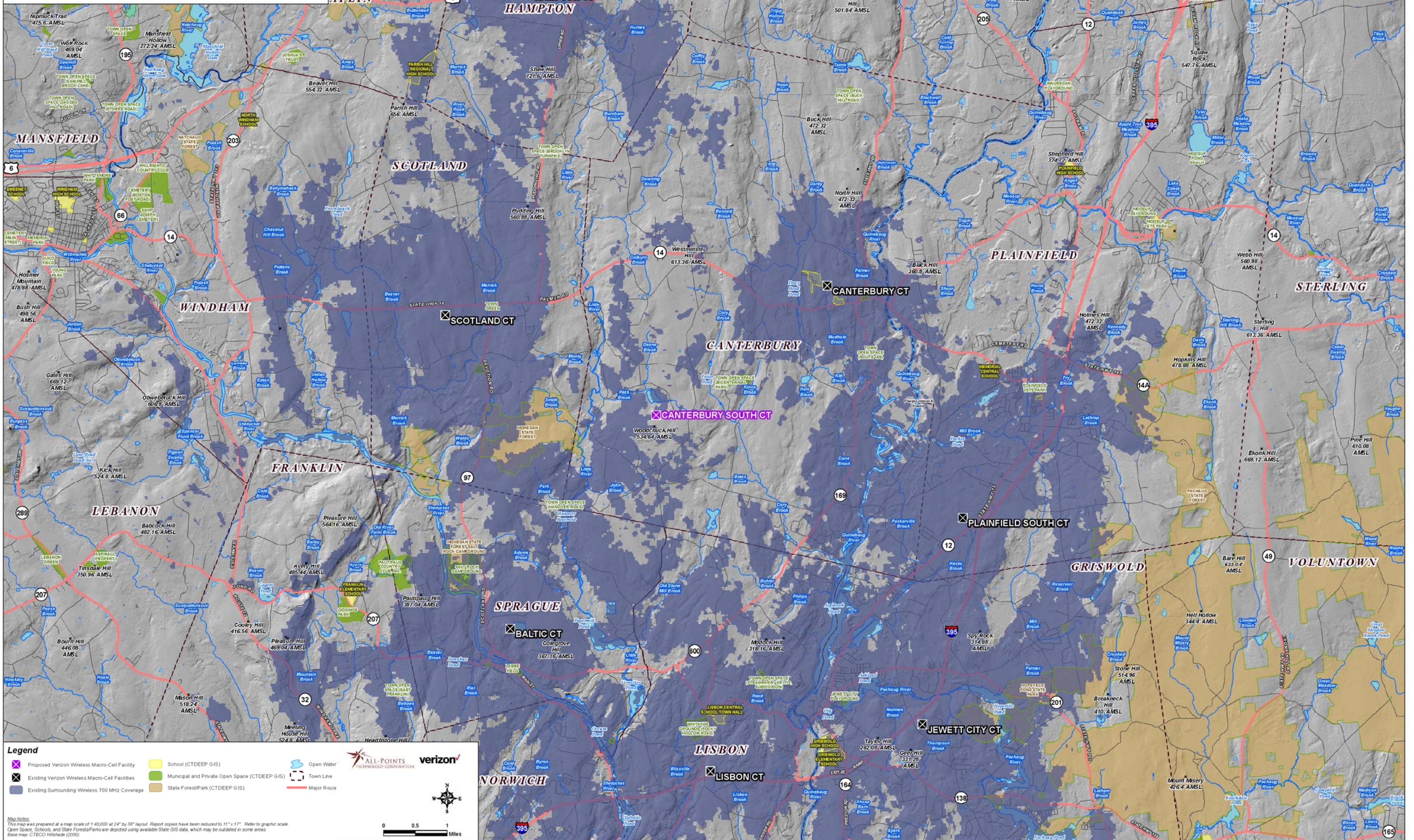


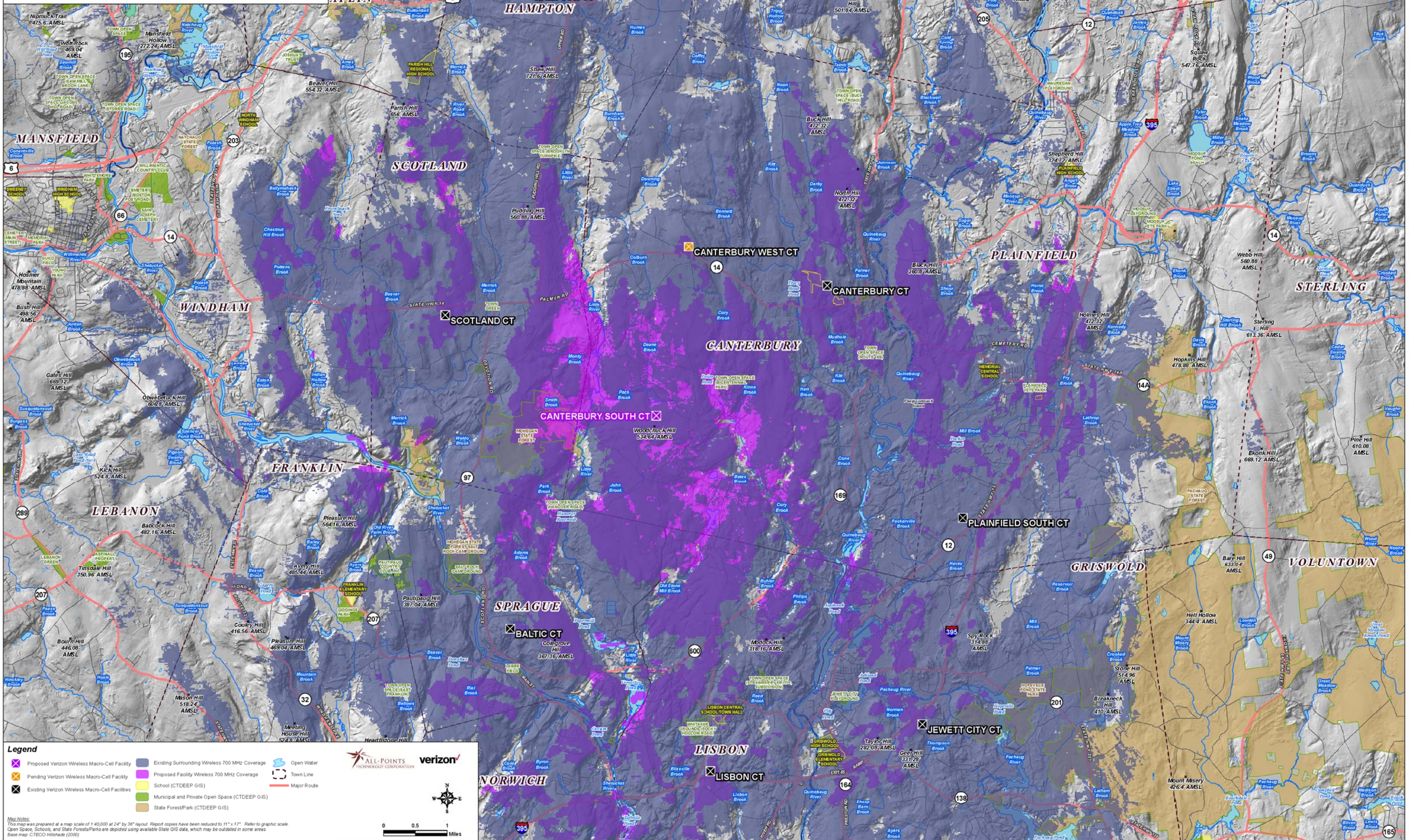
**Existing Verizon Wireless 700 MHz Coverage
Canterbury, Connecticut and Surrounding Area
(*Map Scale is 1:40,000)**

Coverage is depicted at a signal threshold of 120 dB Operational Path Loss



**Proposed Verizon Wireless 700 MHz Coverage
Canterbury, Connecticut and Surrounding Area
(*Map Scale is 1:40,000)**

Coverage is depicted at a signal threshold of 120 dB Operational Path Loss



Legend

- Proposed Verizon Wireless Macro-Cell Facility
- Pending Verizon Wireless Macro-Cell Facility
- Existing Surrounding Wireless 700 MHz Coverage
- Proposed Facility Wireless 700 MHz Coverage
- Open Water
- Town Line
- School (CTDEEP GIS)
- Municipal and Private Open Space (CTDEEP GIS)
- State Forest/Park (CTDEEP GIS)
- Major Route

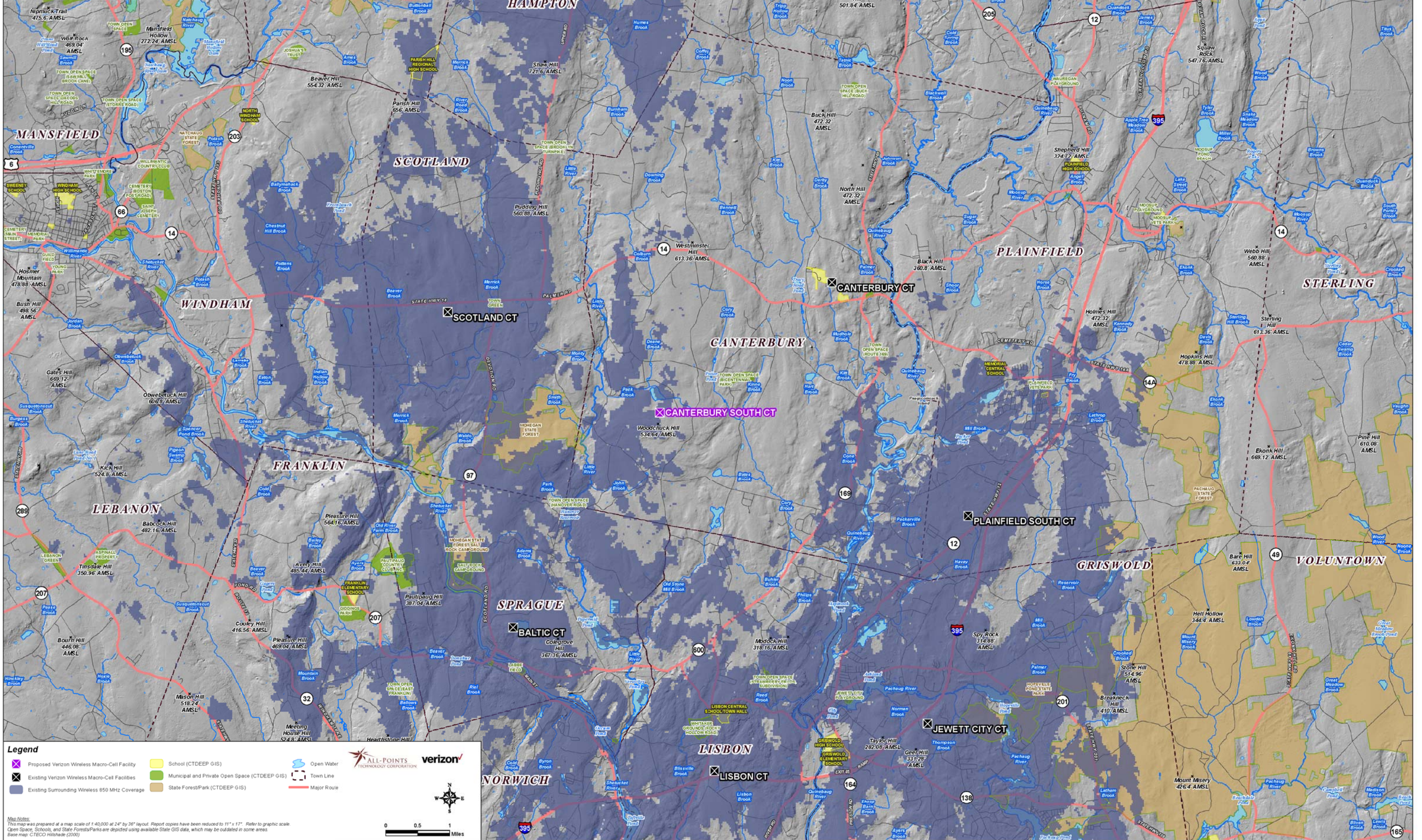
Map Notes:
This map was prepared at a map scale of 1:40,000 at 24" by 36" layout. Report copies have been reduced to 11" x 17". Refer to graphic scale for Open Spaces, Schools, and State Forest/Parks are depicted using available State GIS data, which may be outdated in some areas. Base map: CTECO Hillshade (2000)

Scale: 0 0.5 1 Miles

Logos: ALL-POINTS TECHNOLOGY CORPORATION, verizon

**Existing Verizon Wireless 850 MHz Coverage
Canterbury, Connecticut and Surrounding Area
(*Map Scale is 1:40,000)**

Coverage plot assumes 55% site loading on the Cellco system
Coverage is depicted at a signal threshold of -85 dBm



Legend

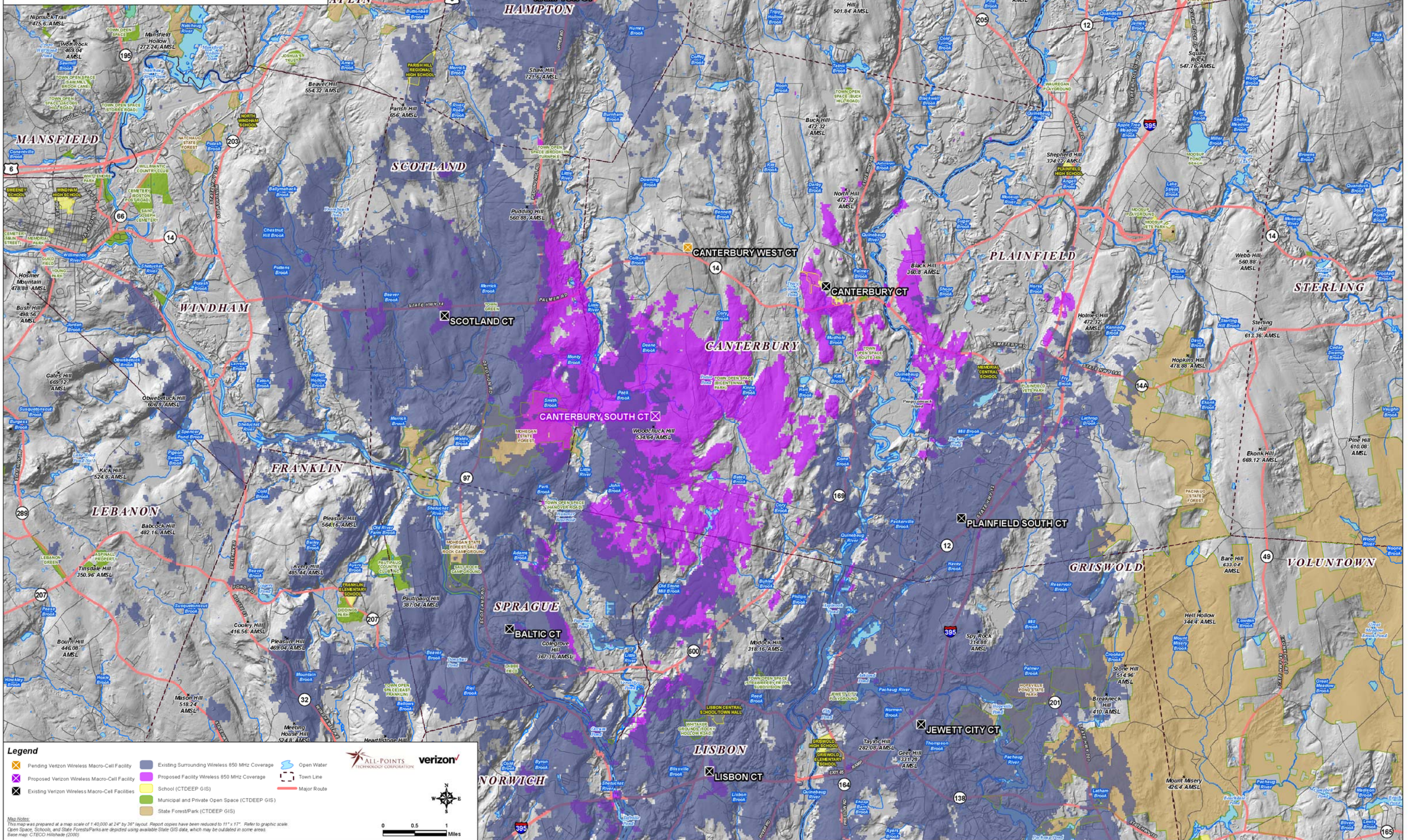
- ✖ Proposed Verizon Wireless Macro-Cell Facility
- School (CTDEEP GIS)
- Open Water
- ✖ Existing Verizon Wireless Macro-Cell Facilities
- Municipal and Private Open Space (CTDEEP GIS)
- Town Line
- Existing Surrounding Wireless 850 MHz Coverage
- State Forest/Park (CTDEEP GIS)

Map Notes:
This map was prepared at a map scale of 1:40,000 at 24" by 36" layout. Report copies have been reduced to 11" x 17". Refer to graphic scale.
Open Space, Schools, and State Forest/Parks are depicted using available State GIS data, which may be outdated in some areas.
Base map: CTECO Hillshade (2000)

Scale: 0 0.5 1 Miles

**Proposed Verizon Wireless 850 MHz Coverage
Canterbury, Connecticut and Surrounding Area
(*Map Scale is 1:40,000)**

Coverage plot assumes 55% site loading on the Celco system
Coverage is depicted at a signal threshold of -85 dBm



Legend

- ✕ Pending Verizon Wireless Macro-Cell Facility
- ✕ Proposed Verizon Wireless Macro-Cell Facility
- ✕ Existing Verizon Wireless Macro-Cell Facilities
- Existing Surrounding Wireless 850 MHz Coverage
- Proposed Facility Wireless 850 MHz Coverage
- School (CTDEEP GIS)
- Municipal and Private Open Space (CTDEEP GIS)
- State Forest/Park (CTDEEP GIS)
- Open Water
- Town Line
- Major Route

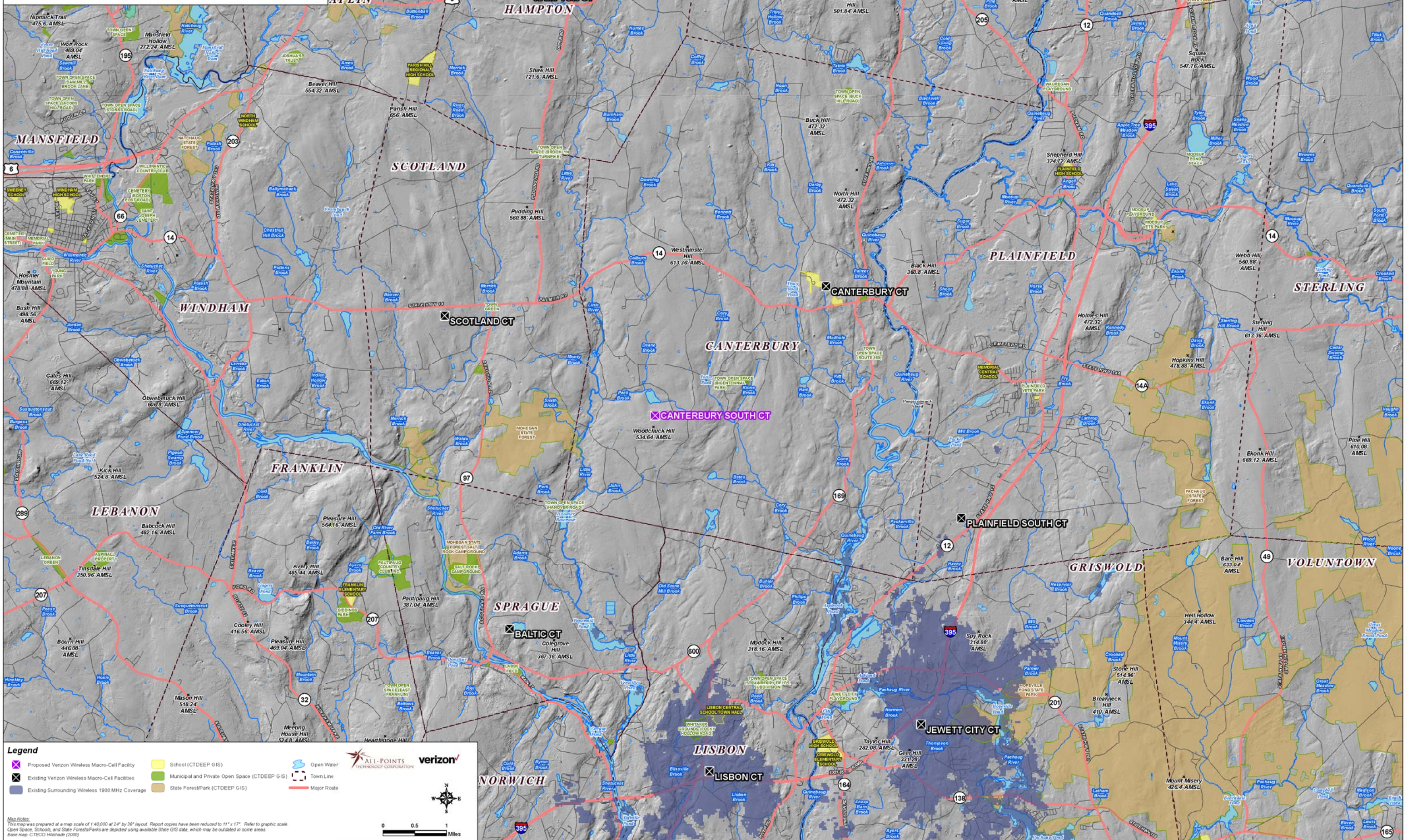
Map Notes:
This map was prepared at a map scale of 1:40,000 at 24" by 36" layout. Report covers have been reduced to 11" x 17". Refer to graphic scale.
Open Space, Schools, and State Forest/Parks are depicted using available State GIS data, which may be outdated in some areas.
Base map: CTECO Hillshade (2000)

Scale: 0 0.5 1 Miles

Logos: ALL-POINTS TECHNOLOGY CORPORATION, verizon

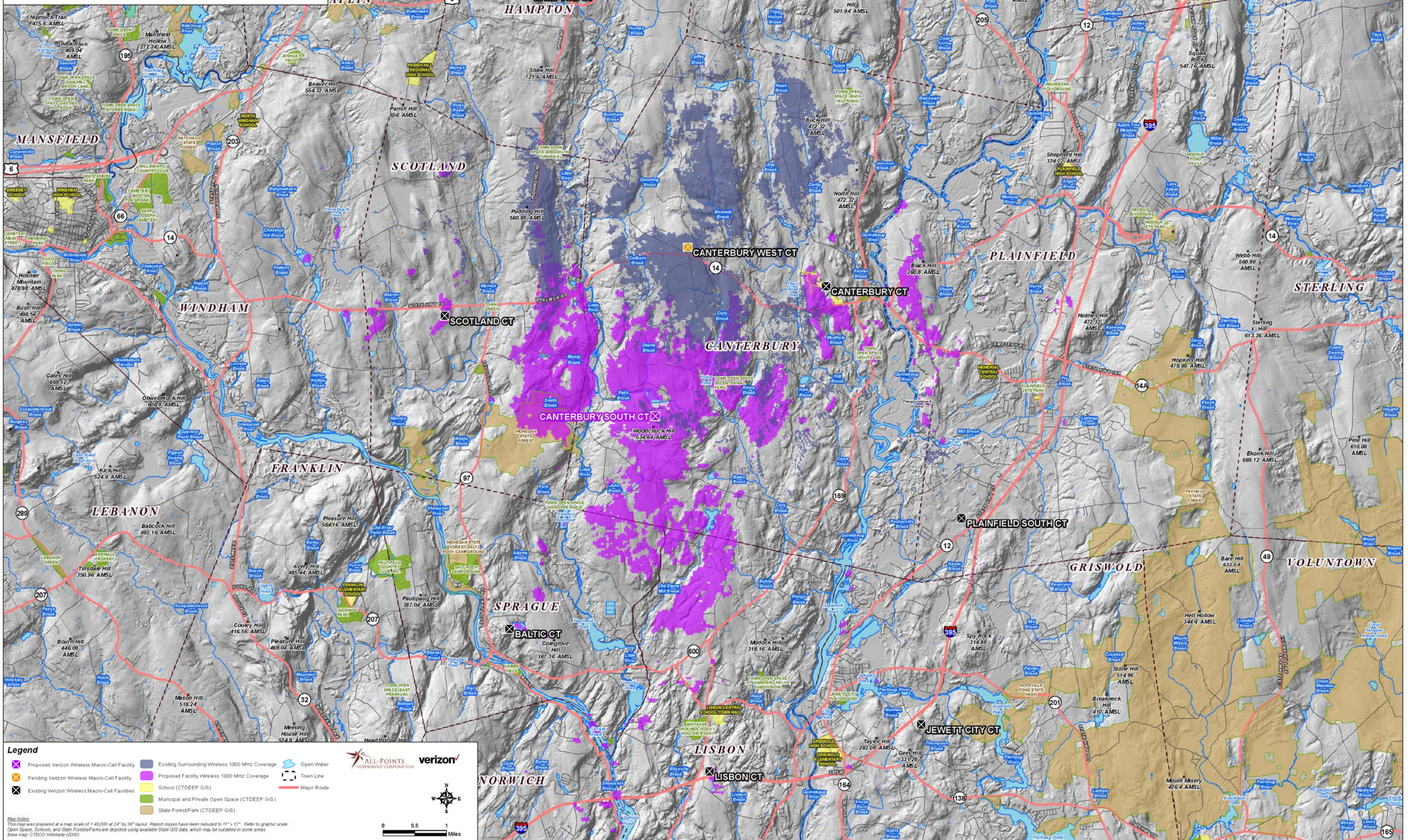
**Existing Verizon Wireless 1900 MHz Coverage
Canterbury, Connecticut and Surrounding Area
(*Map Scale is 1:40,000)**

Coverage plot assumes 55% site loading on the Cellco system
Coverage is depicted at a signal threshold of -85 dBm



**Proposed Verizon Wireless 1900 MHz Coverage
Canterbury, Connecticut and Surrounding Area
(*Map Scale is 1:40,000)**

Coverage plot assumes 55% site loading on the Celco system
Coverage is depicted at a signal threshold of -85 dBm



Legend

Proposed Verizon Wireless Macro-Cell Facility	Existing Surrounding Wireless 1900 MHz Coverage	Open Water
Pending Verizon Wireless Macro-Cell Facility	Proposed Facility Wireless 1900 MHz Coverage	Town Line
Existing Verizon Wireless Macro-Cell Facilities	School (CTDEEP GIS)	Major Route
	Municipal and Private Open Space (CTDEEP GIS)	
	State Forest/Park (CTDEEP GIS)	

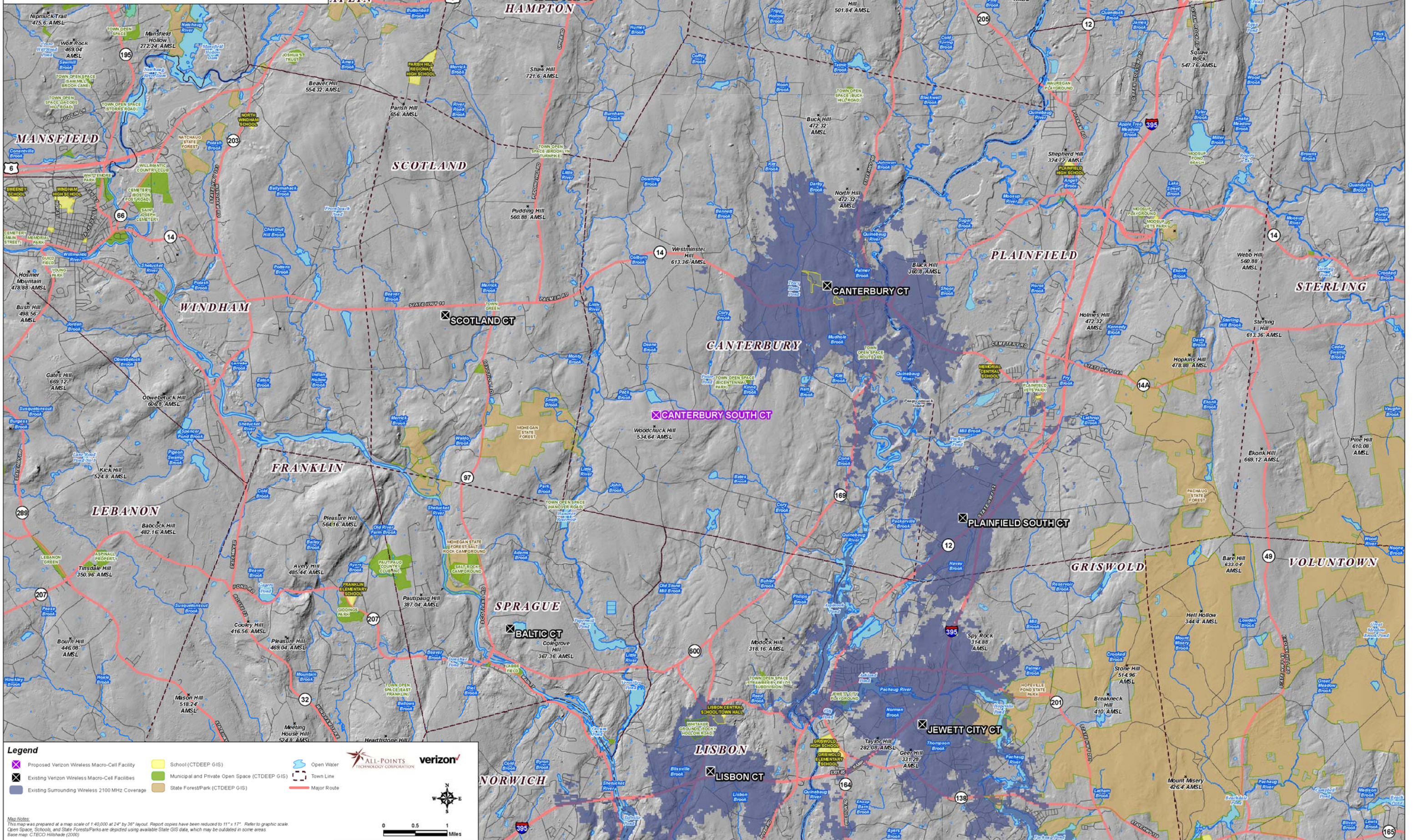
Map Notes:
This map was prepared at a map scale of 1:40,000 at 24" by 36" layout. Report covers have been reduced to 11" x 17". Refer to graphic scale.
Open Space, Schools, and State Forest/Parks are depicted using available State GIS data, which may be outdated in some areas.
Base map: CTDEEP Hillshade (2000)

Scale: 0 0.5 1 Miles

Logos: ALL-POINTS TECHNOLOGY CORPORATION, verizon

**Existing Verizon Wireless 2100 MHz Coverage
Canterbury, Connecticut and Surrounding Area
(*Map Scale is 1:40,000)**

Coverage is depicted at a signal threshold of 120 dB Operational Path Loss



Map Notes:
This map was prepared at a map scale of 1:40,000 at 24" by 36" layout. Report copies have been reduced to 11" x 17". Refer to graphic scale.
Open Space, Schools, and State Forest/Parks are depicted using available State GIS data, which may be outdated in some areas.
Base map: CTECO Hillshade (2000)

**Proposed Verizon Wireless 2100 MHz Coverage
Canterbury, Connecticut and Surrounding Area
(*Map Scale is 1:40,000)**

Coverage is depicted at a signal threshold of 120 dB Operational Path Loss

