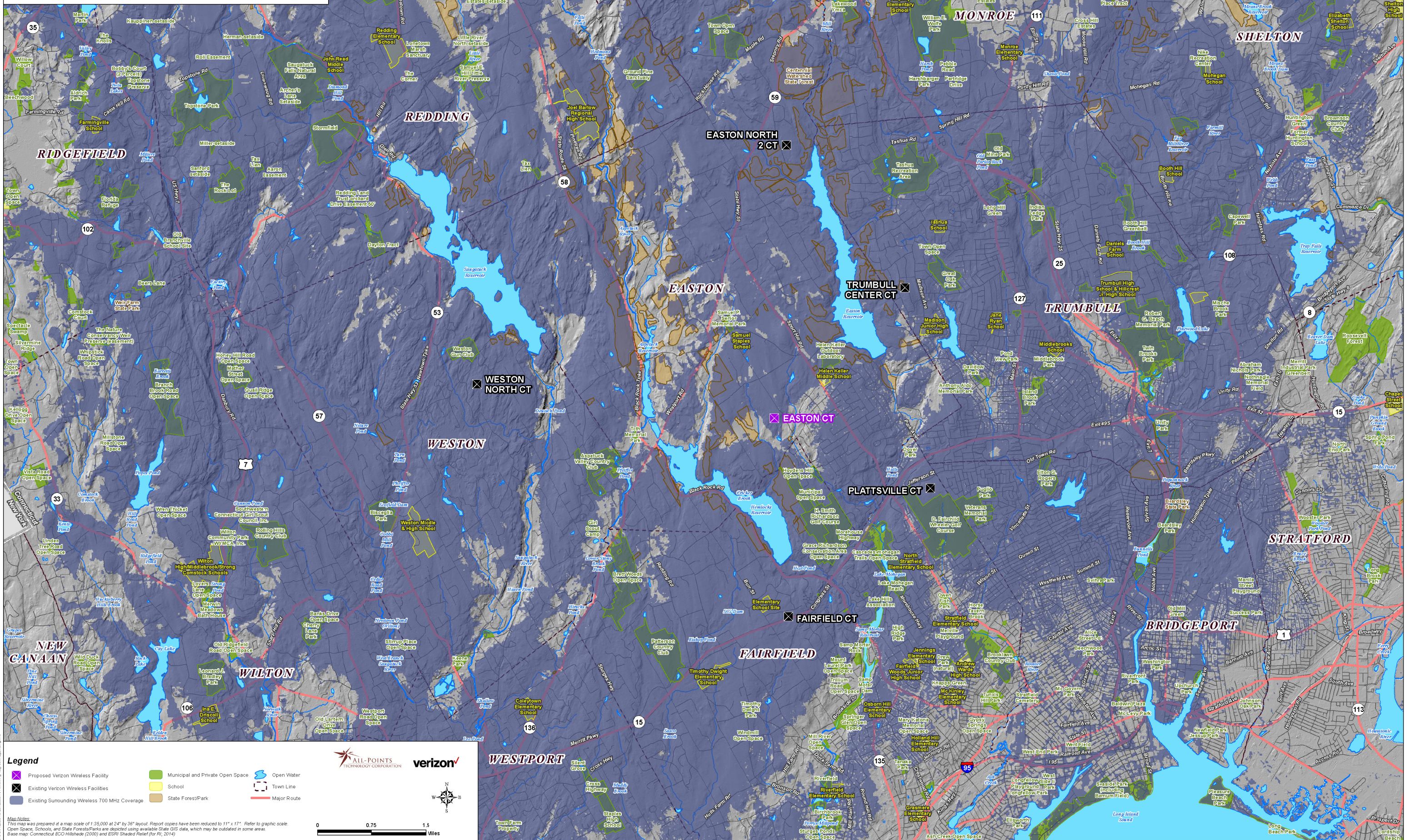


**Existing Verizon Wireless 700 MHz Coverage
Easton, Connecticut and Surrounding Area
(*Map Scale is 1:35,000)**

Coverage is depicted at a signal threshold of 120 dB Operational Path Loss



Legend

- X Proposed Verizon Wireless Facility
- X Existing Verizon Wireless Facilities
- Existing Surrounding Wireless 700 MHz Coverage
- Municipal and Private Open Space
- School
- State Forest/Park
- Open Water
- Town Line
- Major Route

ALL-POINTS TECHNOLOGY CORPORATION

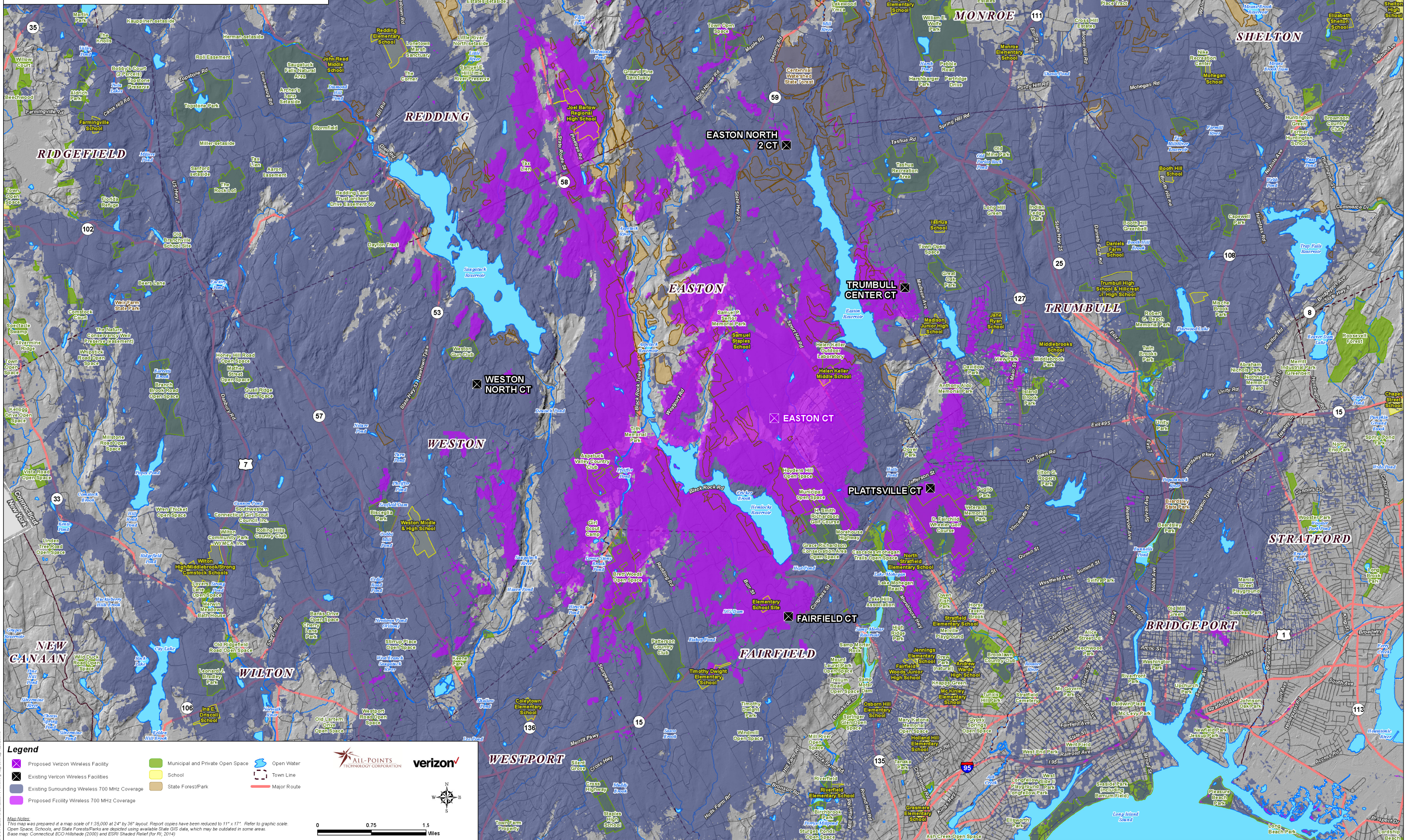
Map Notes:
This map was prepared at a map scale of 1:35,000 at 24" by 36" layout. Report copies have been reduced to 11" x 17". Refer to graphic scale.
Open Space, Schools, and State Forest/Parks are depicted using available State GIS data, which may be outdated in some areas.
Base map: Connecticut EOC Hillshade (2000) and ESRI Shaded Relief (for RI, 2014)

0 0.75 1.5 Miles

Copyright 2014 All-Points Technology Corporation. All rights reserved. 20140814

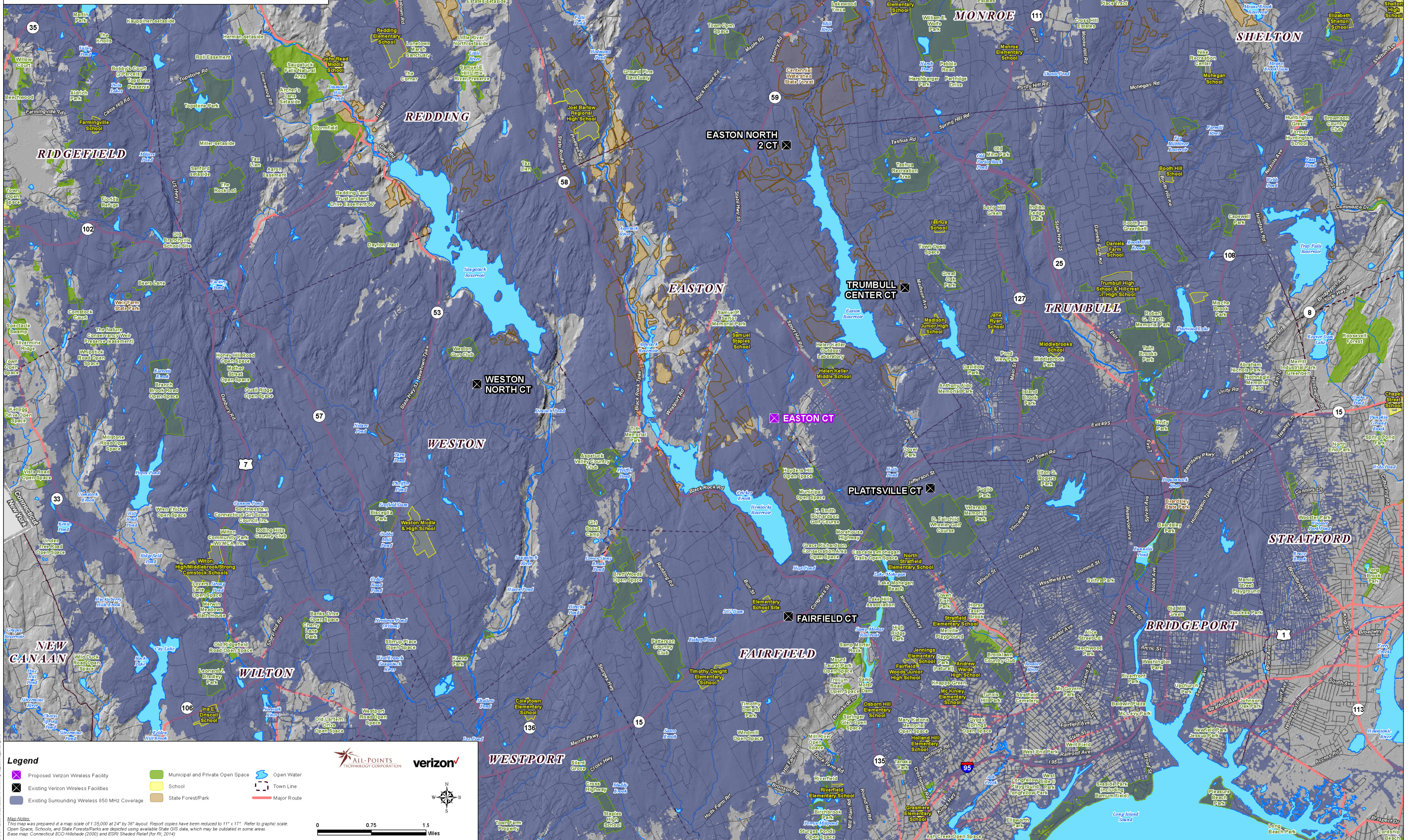
**Proposed Verizon Wireless 700 MHz Coverage
Easton, Connecticut and Surrounding Area
(*Map Scale is 1:35,000)**

Coverage is depicted at a signal threshold of 120 dB Operational Path Loss



**Existing Verizon Wireless 850 MHz Coverage
Easton, Connecticut and Surrounding Area
(*Map Scale is 1:35,000)**

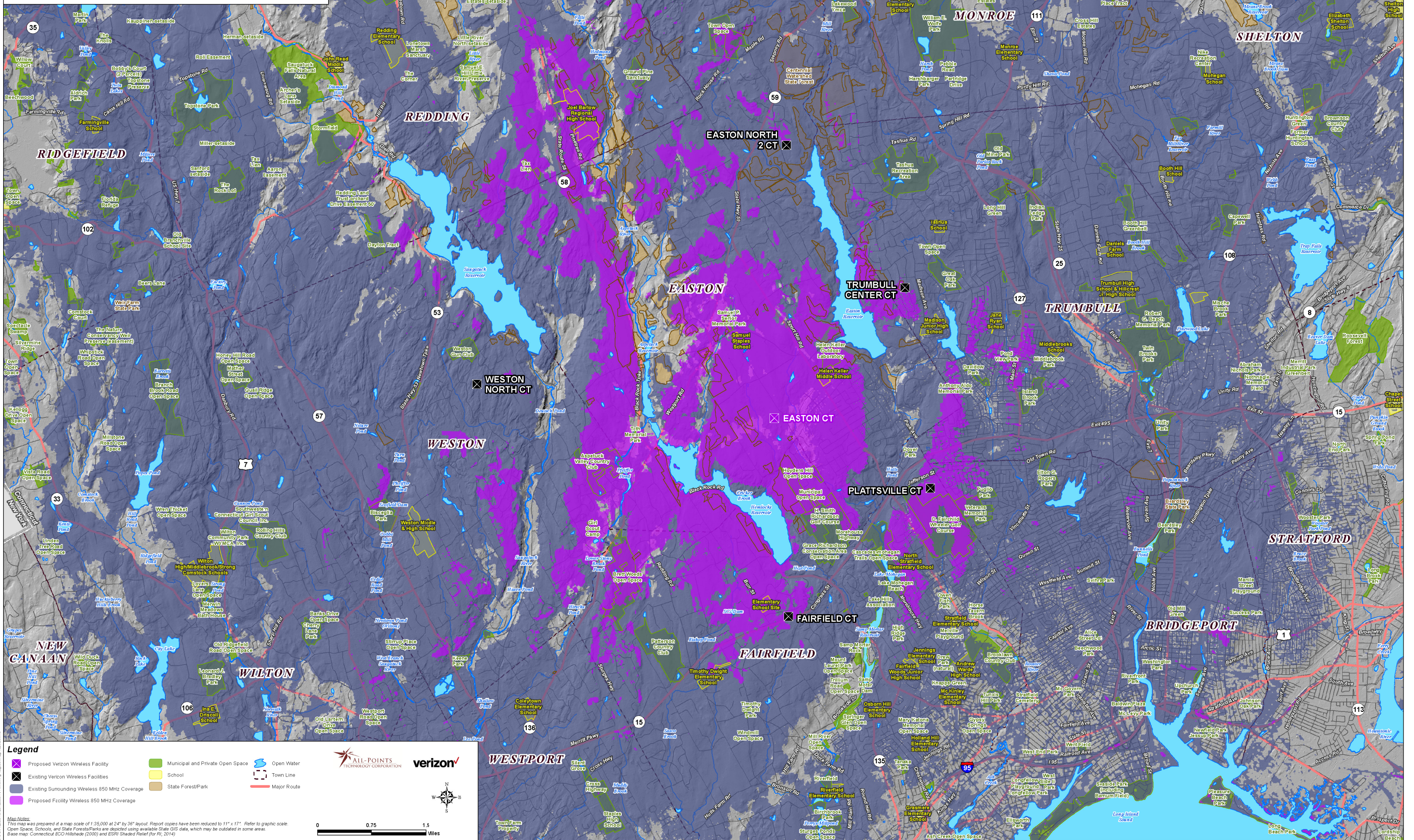
Coverage is depicted at a signal threshold of 120 dB Operational Path Loss



Map Notes:
This map was prepared at a map scale of 1:35,000 at 24" by 36" layout. Report copies have been reduced to 11" x 17". Refer to graphic scale.
Open Space, Schools, and State Forest/Parks are depicted using available State GIS data, which may be outdated in some areas.
Base map: Connecticut EOC Hillshade (2000) and ESRI Shaded Relief (for RI, 2014)

**Proposed Verizon Wireless 850 MHz Coverage
Easton, Connecticut and Surrounding Area
(*Map Scale is 1:35,000)**

Coverage is depicted at a signal threshold of 120 dB Operational Path Loss



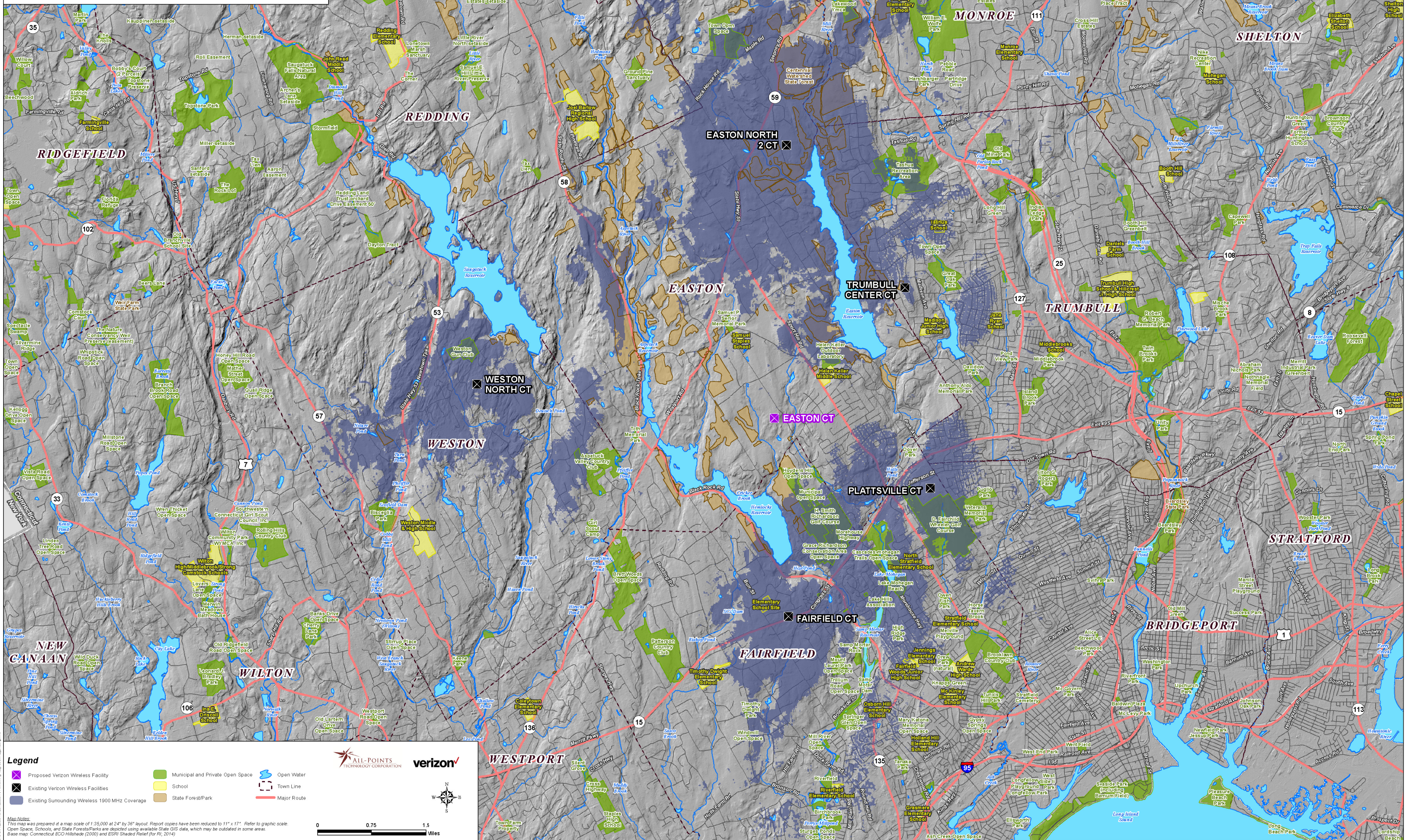
Legend

- Proposed Verizon Wireless Facility
- Existing Verizon Wireless Facilities
- Existing Surrounding Wireless 850 MHz Coverage
- Proposed Facility Wireless 850 MHz Coverage
- Municipal and Private Open Space
- School
- State Forest/Park
- Open Water
- Town Line
- Major Route

Map Notes:
This map was prepared at a map scale of 1:35,000 at 24" by 36" layout. Report copies have been reduced to 11" x 17". Refer to graphic scale.
Open Space, Schools, and State Forest/Parks are depicted using available State GIS data, which may be outdated in some areas.
Base map: Connecticut EOC Hillshade (2000) and ESRI Shaded Relief (for RI, 2014)

**Existing Verizon Wireless 1900 MHz Coverage
Easton, Connecticut and Surrounding Area
(*Map Scale is 1:35,000)**

Coverage is depicted at a signal threshold of 120 dB Operational Path Loss



Legend

- Proposed Verizon Wireless Facility
- Municipal and Private Open Space
- Open Water
- Existing Verizon Wireless Facilities
- School
- Town Line
- Existing Surrounding Wireless 1900 MHz Coverage
- State Forest/Park
- Major Route

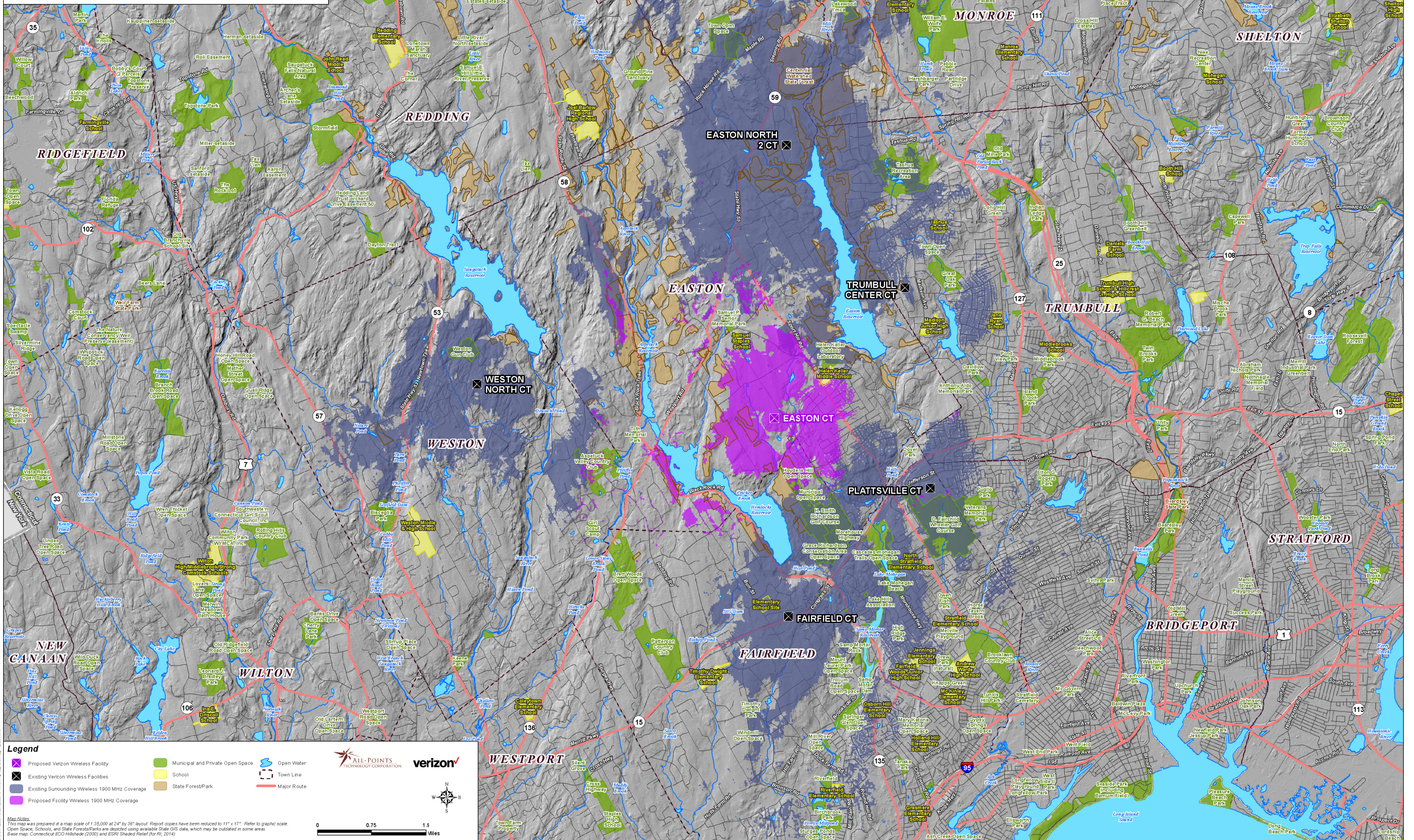
Map Notes:
This map was prepared at a map scale of 1:35,000 at 24" by 36" layout. Report copies have been reduced to 11" x 17". Refer to graphic scale.
Open Space, Schools, and State Forest/Parks are depicted using available State GIS data, which may be outdated in some areas.
Base map: Connecticut EOC Hillshade (2000) and ESRI Shaded Relief (for RI, 2014)

Scale: 0 0.75 1.5 Miles

Logos: ALL-POINTS TECHNOLOGY CORPORATION, verizon

**Proposed Verizon Wireless 1900 MHz Coverage
Easton, Connecticut and Surrounding Area
(*Map Scale is 1:35,000)**

Coverage is depicted at a signal threshold of 120 dB Operational Path Loss



**Proposed Verizon Wireless 2100 MHz Coverage
Easton, Connecticut and Surrounding Area
(*Map Scale is 1:35,000)**

Coverage is depicted at a signal threshold of 120 dB Operational Path Loss

