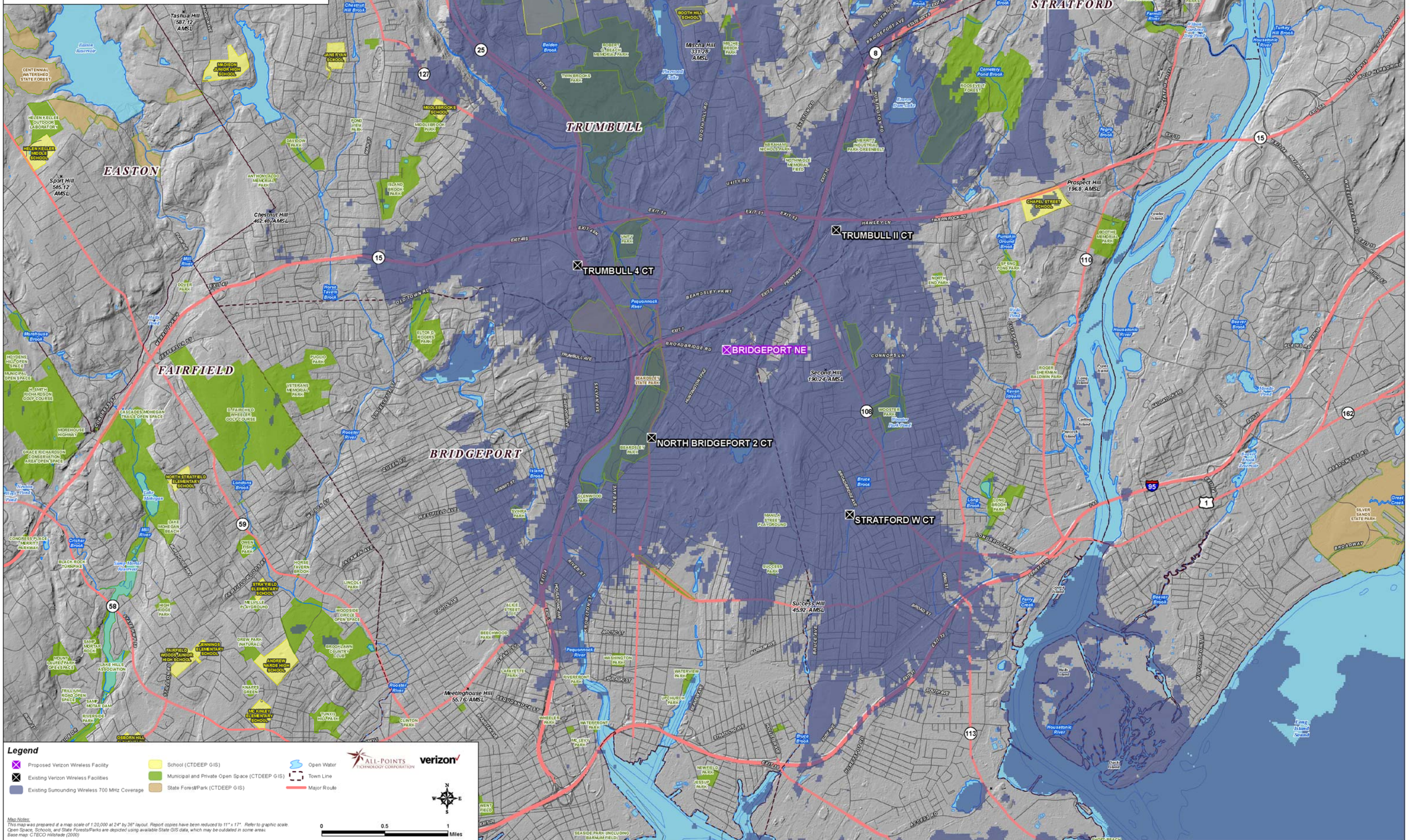


**Existing Verizon Wireless 700 MHz Coverage
Bridgeport, Connecticut and Surrounding Area
(*Map Scale is 1:20,000)**

Coverage is depicted at a signal threshold of 120 dB Operational Path Loss



Legend

- X Proposed Verizon Wireless Facility
- X Existing Verizon Wireless Facilities
- Existing Surrounding Wireless 700 MHz Coverage
- School (CTDEEP GIS)
- Municipal and Private Open Space (CTDEEP GIS)
- State Forest/Park (CTDEEP GIS)
- ~ Open Water
- Town Line
- Major Route

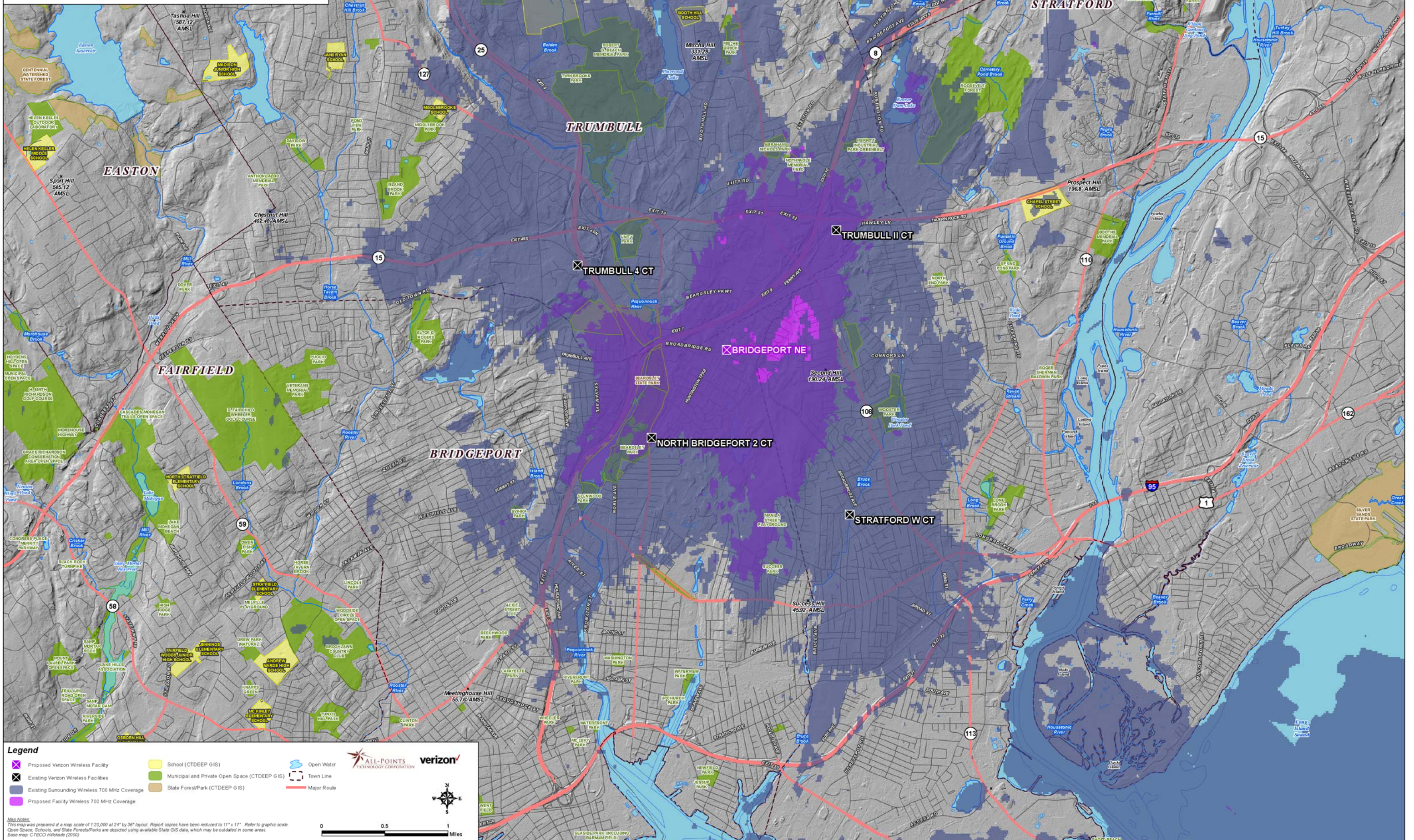
Map Notes
This map was prepared at a map scale of 1:20,000 at 24" by 36" layout. Report copies have been reduced to 11" x 17". Refer to graphic scale. Open Space, Schools, and State Forest/Parks are depicted using available State GIS data, which may be outdated in some areas. Base map: © TEICO Hillshade (2000)

Scale: 0 0.5 1 Miles

Logos: ALL-POINTS TECHNOLOGY CORPORATION, verizon

**Proposed Verizon Wireless 700 MHz Coverage
Bridgeport, Connecticut and Surrounding Area
(*Map Scale is 1:20,000)**

Coverage is depicted at a signal threshold of 120 dB Operational Path Loss



Legend

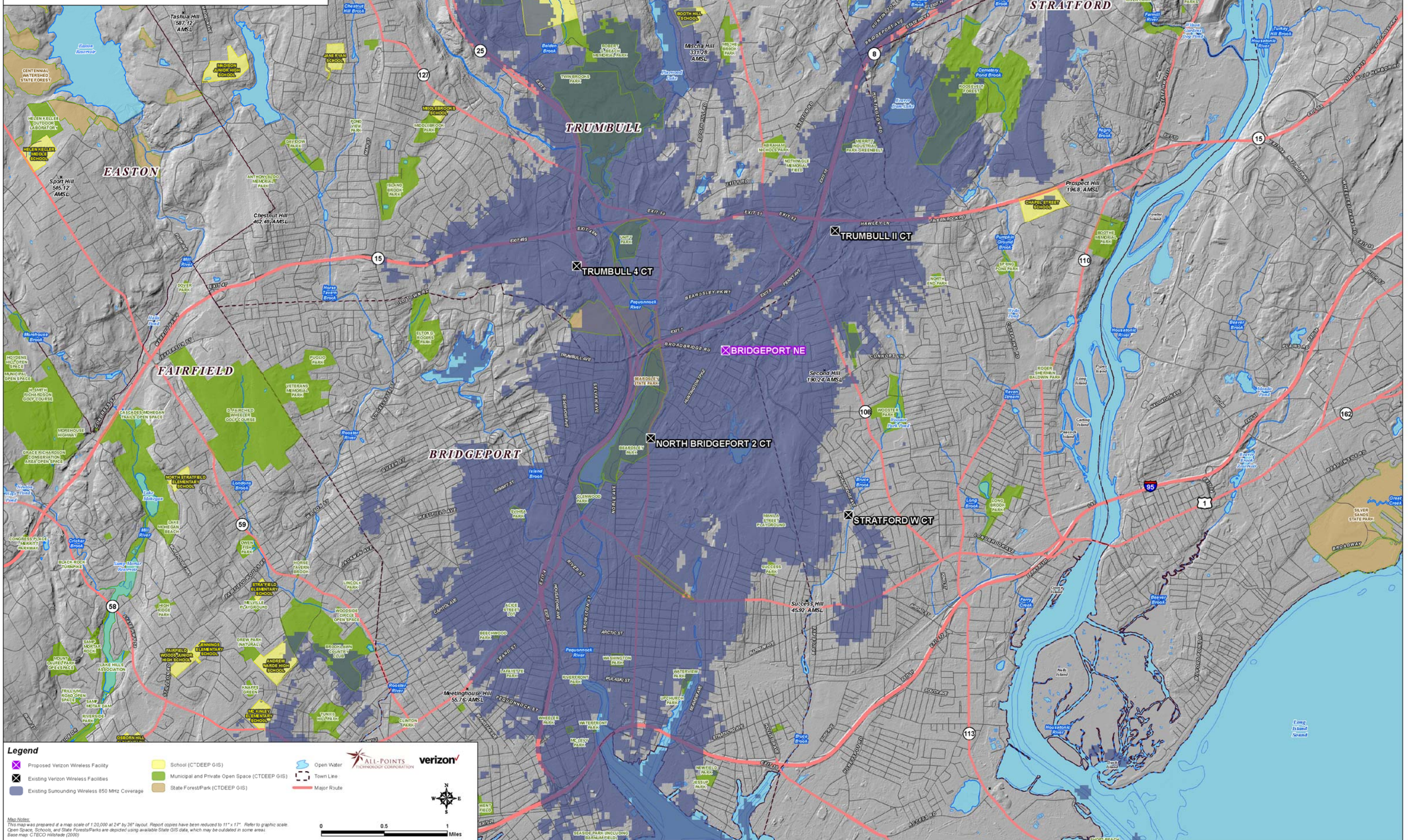
- ✖ Proposed Verizon Wireless Facility
- ✖ Existing Verizon Wireless Facilities
- Existing Surrounding Wireless 700 MHz Coverage
- Proposed Facility Wireless 700 MHz Coverage
- School (CTDEEP GIS)
- Municipal and Private Open Space (CTDEEP GIS)
- State Forest/Park (CTDEEP GIS)
- Open Water
- Town Line
- Major Route

Map Notes
This map was prepared at a map scale of 1:20,000 at 24" by 36" layout. Report copies have been reduced to 11" x 17". Refer to graphic scale. Open Space, Schools, and State Forest/Parks are depicted using available State GIS data, which may be outdated in some areas. Base map: © CTECO Hillshade (2000)

0 0.5 1 Miles

**Existing Verizon Wireless 850 MHz Coverage
Bridgeport, Connecticut and Surrounding Area
(*Map Scale is 1:20,000)**

Coverage plot assumes 55% site loading on the Cellco system
Coverage is depicted at a signal threshold of -85 dBm



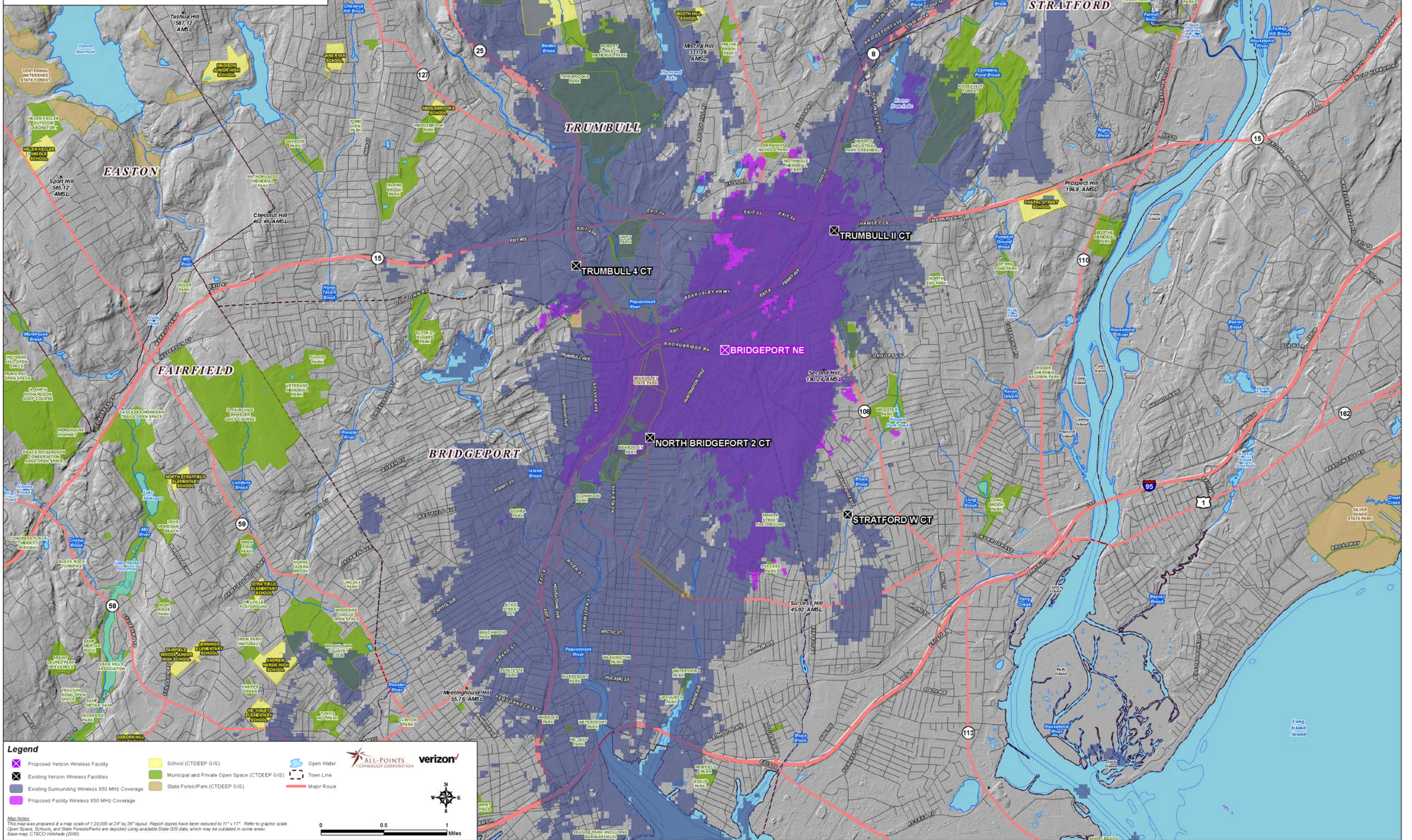
Legend

- ✖ Proposed Verizon Wireless Facility
- ✖ Existing Verizon Wireless Facilities
- Existing Surrounding Wireless 850 MHz Coverage
- School (CTDEEP GIS)
- Municipal and Private Open Space (CTDEEP GIS)
- State Forest/Park (CTDEEP GIS)
- ~ Open Water
- Town Line
- Major Route

Map Notes
This map was prepared at a map scale of 1:20,000 at 24" by 36" layout. Report copies have been reduced to 11" x 17". Refer to graphic scale.
Open Space, Schools, and State Forest/Parks are depicted using available State GIS data, which may be outdated in some areas.
Base map: CTECO Hillshade (2000)

**Proposed Verizon Wireless 850 MHz Coverage
Bridgeport, Connecticut and Surrounding Area
(*Map Scale is 1:20,000)**

Coverage plot assumes 55% site loading on the Cellco system
Coverage is depicted at a signal threshold of -85 dBm



Legend

- Proposed Verizon Wireless Facility
- Existing Verizon Wireless Facilities
- Existing Surrounding Wireless 850 MHz Coverage
- Proposed Facility Wireless 850 MHz Coverage
- School (CTDEEP GIS)
- Municipal and Private Open Space (CTDEEP GIS)
- State Forest/Park (CTDEEP GIS)
- Open Water
- Town Line
- Major Route

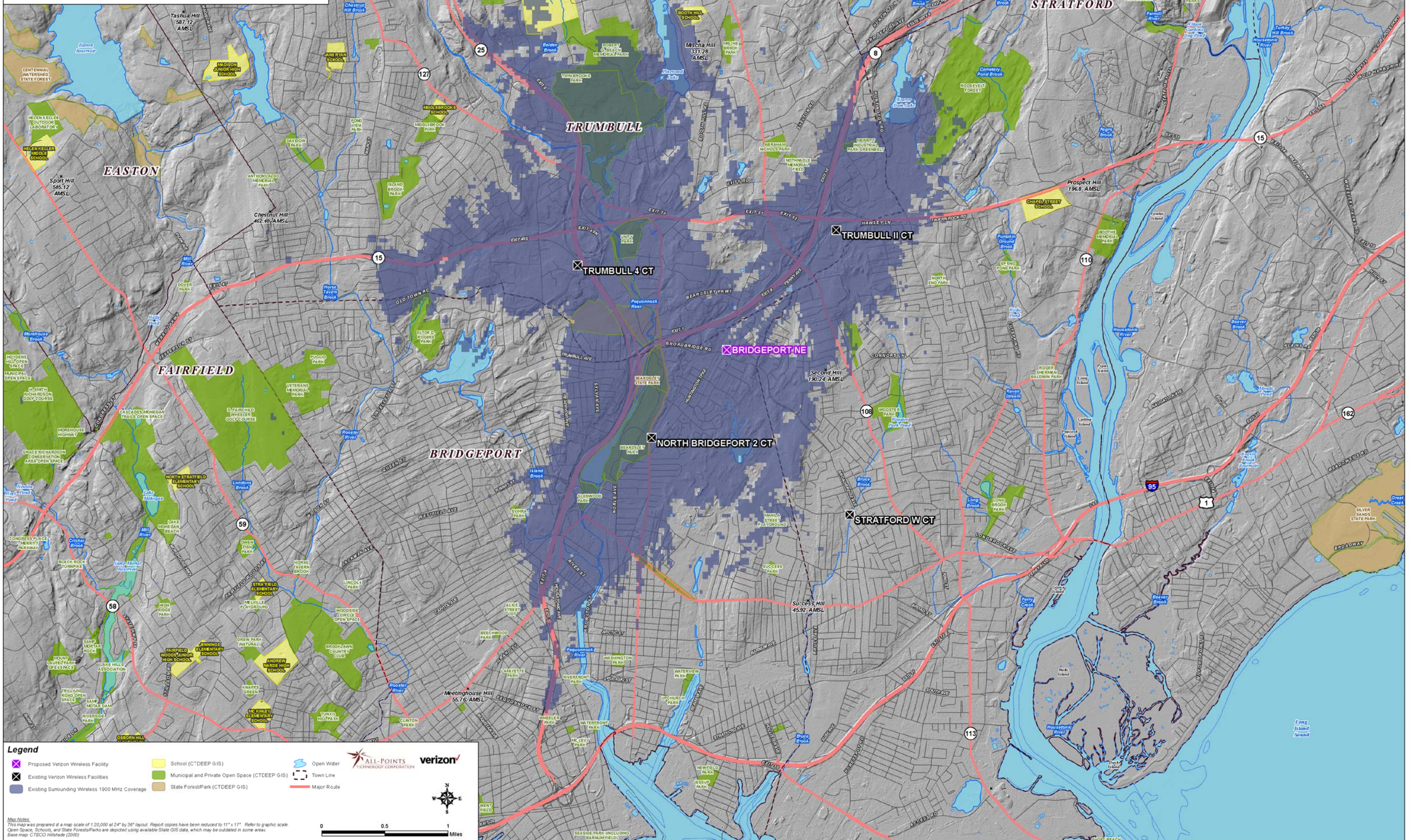
Map Notes
This map was prepared at a map scale of 1:20,000 at 24" by 36" layout. Report copies have been reduced to 11" x 17". Refer to graphic scale.
Open Space, Schools, and State Forest/Parks are depicted using available State GIS data, which may be outdated in some areas.
Base map: CTECO Hillshade (2000)

Scale: 0 0.5 1 Miles

Logos: ALL-POINTS TECHNOLOGY CORPORATION, verizon

**Existing Verizon Wireless 1900 MHz Coverage
Bridgeport, Connecticut and Surrounding Area
(*Map Scale is 1:20,000)**

Coverage is depicted at a signal threshold of 120 dB Operational Path Loss



Legend

- X Proposed Verizon Wireless Facility
- X Existing Verizon Wireless Facilities
- Existing Surrounding Wireless 1900 MHz Coverage
- School (CTDEEP GIS)
- Municipal and Private Open Space (CTDEEP GIS)
- State Forest/Park (CTDEEP GIS)
- Open Water
- Town Line
- Major Route

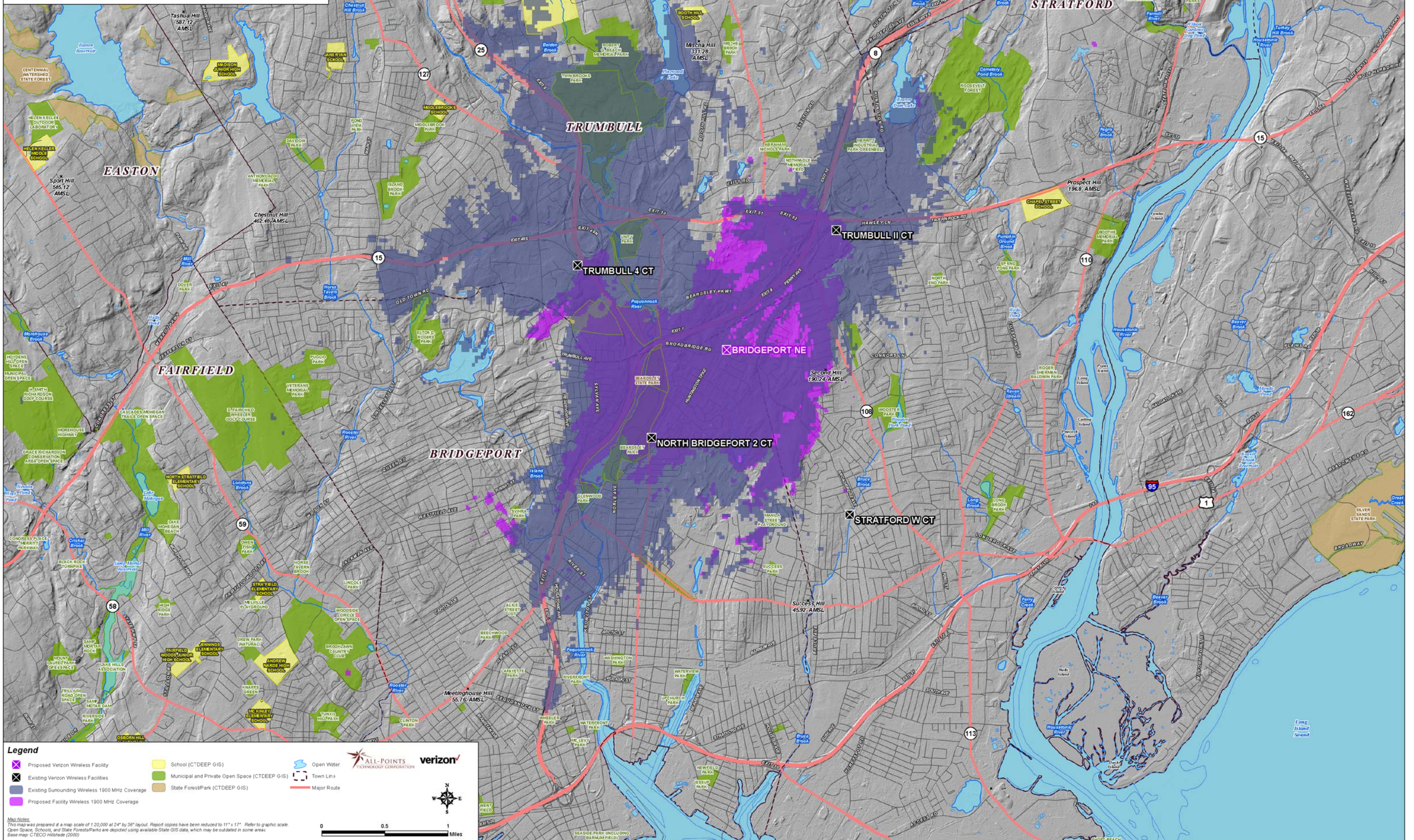
Map Notes
This map was prepared at a map scale of 1:20,000 at 24" by 36" layout. Report copies have been reduced to 11" x 17". Refer to graphic scale. Open Space, Schools, and State Forest/Parks are depicted using available State GIS data, which may be outdated in some areas. Base map: CTECO Hillshade (2000)

Scale: 0 0.5 1 Miles

Logos: ALL-POINTS TECHNOLOGY CORPORATION, verizon

**Proposed Verizon Wireless 1900 MHz Coverage
Bridgeport, Connecticut and Surrounding Area
(*Map Scale is 1:20,000)**

Coverage is depicted at a signal threshold of 120 dB Operational Path Loss



Legend

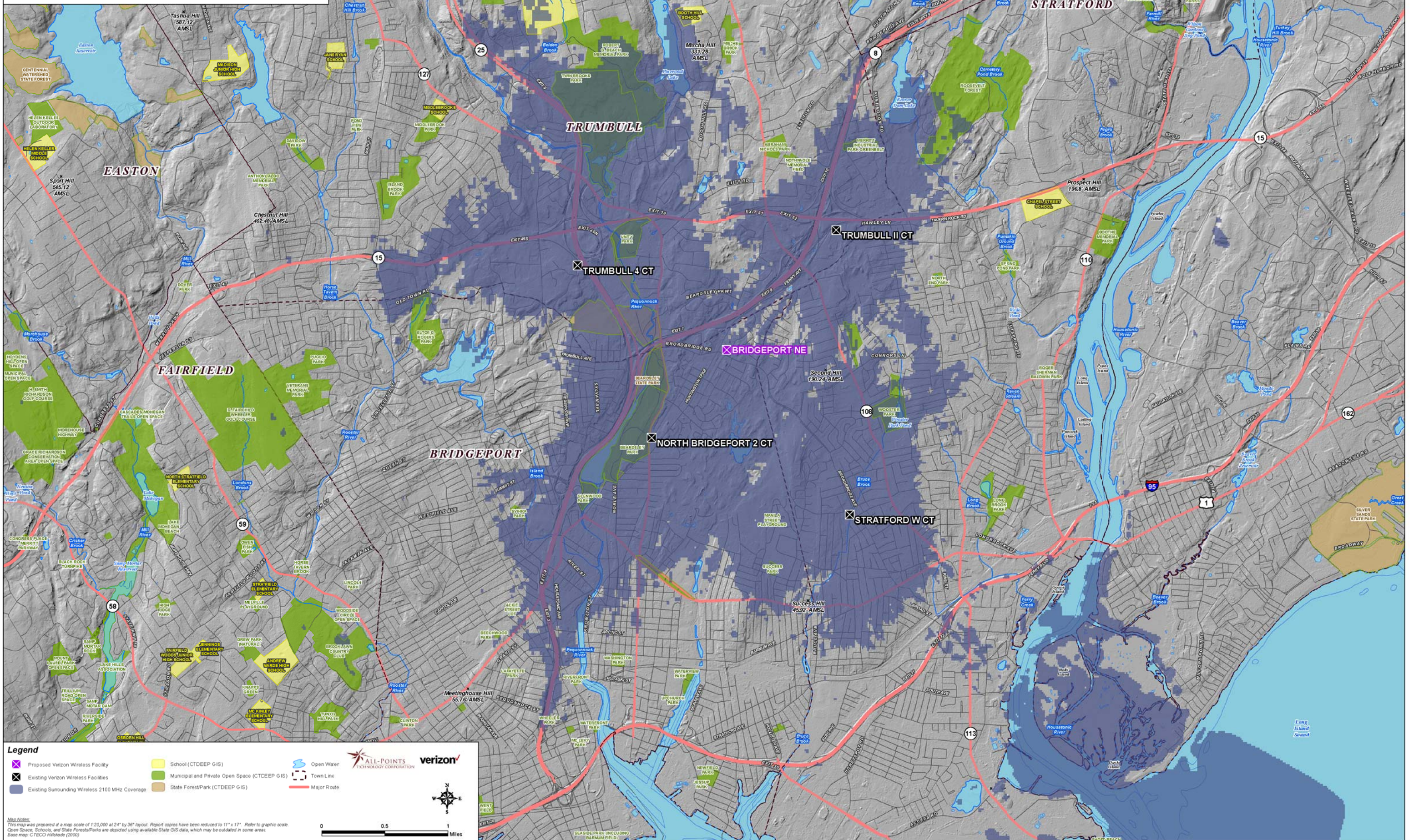
- ✖ Proposed Verizon Wireless Facility
- ✖ Existing Verizon Wireless Facilities
- Existing Surrounding Wireless 1900 MHz Coverage
- Proposed Facility Wireless 1900 MHz Coverage
- School (CTDEEP GIS)
- Municipal and Private Open Space (CTDEEP GIS)
- State Forest/Park (CTDEEP GIS)
- Open Water
- Town Line
- Major Route

Map Notes
This map was prepared at a map scale of 1:20,000 at 24" by 36" layout. Report copies have been reduced to 11" x 17". Refer to graphic scale. Open Space, Schools, and State Forest/Parks are depicted using available State GIS data, which may be outdated in some areas. Base map: CTECO Hillshade (2000)

0 0.5 1 Miles

**Existing Verizon Wireless 2100 MHz Coverage
Bridgeport, Connecticut and Surrounding Area
(*Map Scale is 1:20,000)**

Coverage is depicted at a signal threshold of 120 dB Operational Path Loss



Legend

- X Proposed Verizon Wireless Facility
- X Existing Verizon Wireless Facilities
- Existing Surrounding Wireless 2100 MHz Coverage
- School (CTDEEP GIS)
- Municipal and Private Open Space (CTDEEP GIS)
- State Forest/Park (CTDEEP GIS)
- Open Water
- Town Line
- Major Route

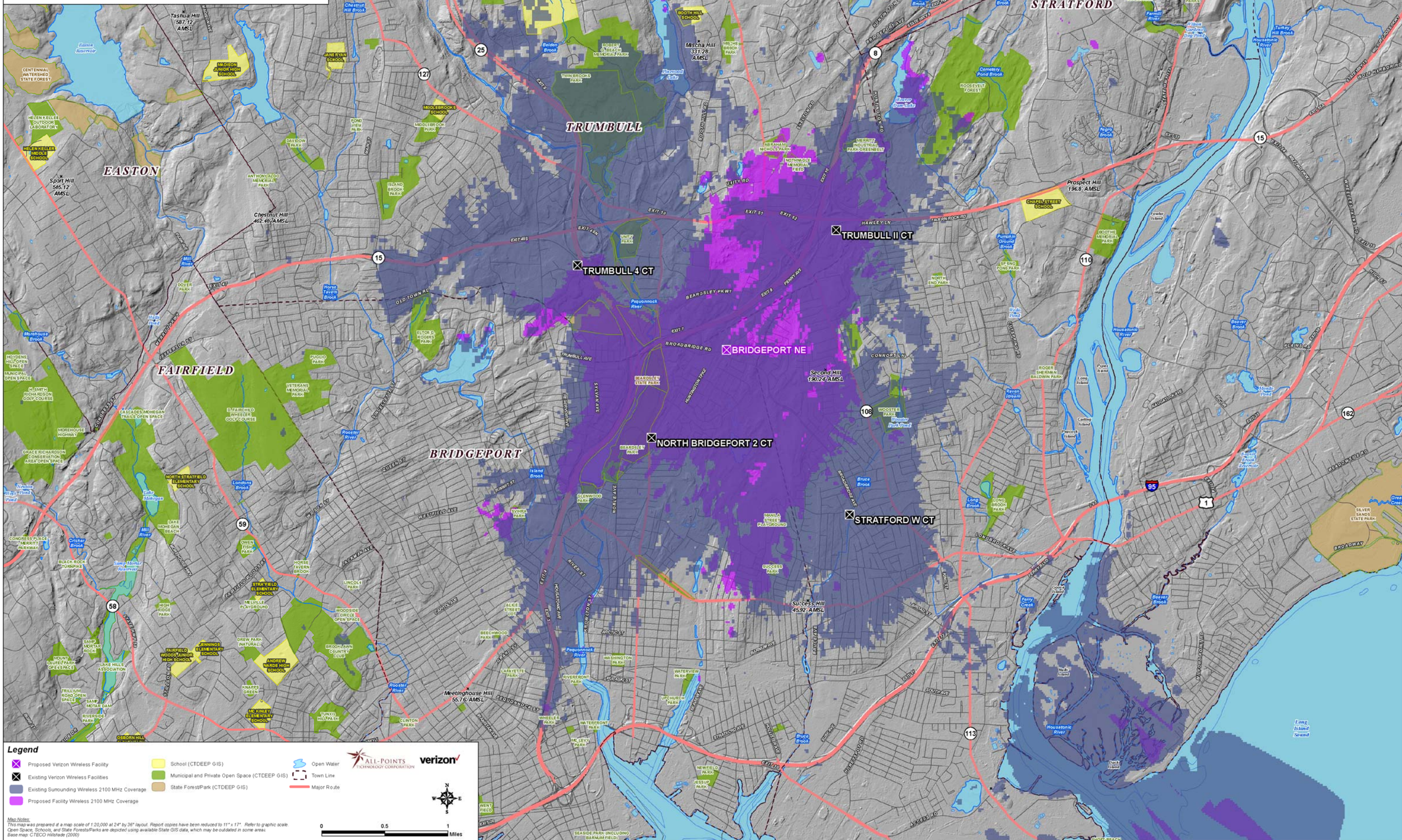
Map Notes
This map was prepared at a map scale of 1:20,000 at 24" by 36" layout. Report copies have been reduced to 11" x 17". Refer to graphic scale. Open Space, Schools, and State Forest/Parks are depicted using available State GIS data, which may be outdated in some areas. Base map: CTECO Hillshade (2000)

Scale: 0 0.5 1 Miles

Logos: ALL-POINTS TECHNOLOGY CORPORATION, verizon

**Proposed Verizon Wireless 2100 MHz Coverage
Bridgeport, Connecticut and Surrounding Area
(*Map Scale is 1:20,000)**

Coverage is depicted at a signal threshold of 120 dB Operational Path Loss



Legend

- ✖ Proposed Verizon Wireless Facility
- ✖ Existing Verizon Wireless Facilities
- Existing Surrounding Wireless 2100 MHz Coverage
- Proposed Facility Wireless 2100 MHz Coverage
- School (CTDEEP GIS)
- Municipal and Private Open Space (CTDEEP GIS)
- State Forest/Park (CTDEEP GIS)
- Open Water
- Town Line
- Major Route

Map Notes
This map was prepared at a map scale of 1:20,000 at 24" by 36" layout. Report copies have been reduced to 11" x 17". Refer to graphic scale. Open Space, Schools, and State Forest/Parks are depicted using available State GIS data, which may be outdated in some areas. Base map: ©TECO Hillshade (2000)

0 0.5 1 Miles