

January 28, 2019

Melanie A. Bachman, Esq.
Executive Director/Staff Attorney
Connecticut Siting Council
10 Franklin Square
New Britain, CT 06051

Re: **Docket No. 471 – Application of Cellco Partnership d/b/a Verizon Wireless for a Certificate of Environmental Compatibility and Public Need for the Construction, Maintenance and Operation of a Wireless Telecommunications Facility Located at 208 Kirk Road, Hamden, Connecticut**

Antenna Modification

Dear Ms. Bachman:

As you know, on January 17, 2019, the Connecticut Siting Council approved the Development and Management (“D&M”) Plan for the above-referenced tower site in Hamden. The applicant, Cellco Partnership d/b/a Verizon Wireless (“Cellco”), recently learned that the antenna model identified on the D&M Plan is no longer available from the manufacturer. Cellco has, therefore, decided to change the antenna at the Kirk Road tower site to Model MX06FRO660-03. This panel antenna is similar in size and appearance to the antenna that Cellco previously proposed to install at this facility. A copy of the specification sheet for the new antenna model is attached for your file.

Please let me know if you have any questions or need any additional information.

Melanie A. Bachman, Esq.
January 28, 2019
Page 2

Sincerely,



Kenneth C. Baldwin

KCB/kmd
Enclosure
Copy to:

Curt B. Leng, Hamden Mayor
Patricia Sorrentino
Bridget M. D'Angelo, Esq.
Jamie Laredo
Mike Humphreys
Aleksy Tyurin

MX06FRO660-03

NWAV™ X-Pol Hex-Port Antenna

X-Pol Hex-Port 6 ft 60° Fast Roll Off antenna with independent tilt on 700 & 850 MHz:

2 ports 698-798, 824-894 MHz and 4 ports 1695-2180 MHz

- Fast Roll Off (FRO™) azimuth beam pattern improves Intra- and Inter-cell SINR
- Compatible with dual band 700/850 MHz radios with independent low band EDT without external diplexers
- Fully integrated (iRETs) with independent RET control for low and high bands for ease of network optimization
- SON-Ready array spacing supports beamforming capabilities
- Suitable for LTE/CDMA/PCS/UMTS/GSM air interface technologies
- Integrated Smart Bias-Ts reduce leasing costs



NWAV

Fast Roll-Off antennas increase data throughput without compromising coverage

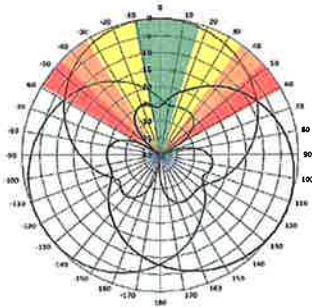
The horizontal beam produced by Fast Roll-Off (FRO) technology increases the Signal to Interference & Noise Ratio (SINR) by eliminating overlap between sectors.

Non-FRO antenna

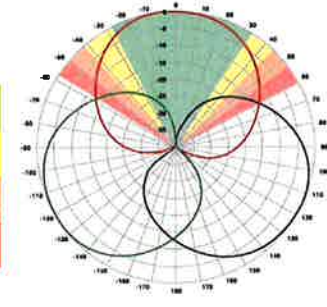
Large traditional antenna pattern overlap creates harmful interference.

JMA FRO antenna

JMA's FRO antenna pattern minimizes overlap, thereby minimizing interference.



LTE throughput	SINR	Speed (bps/Hz)	Speed increase	CQI
Excellent	>18	>4.5	333+%	8-10
Good	15-18	3.3-4.5	277%	6-7
Fair	10-15	2-3.3	160%	4-6
Poor	<10	<2	0%	1-3

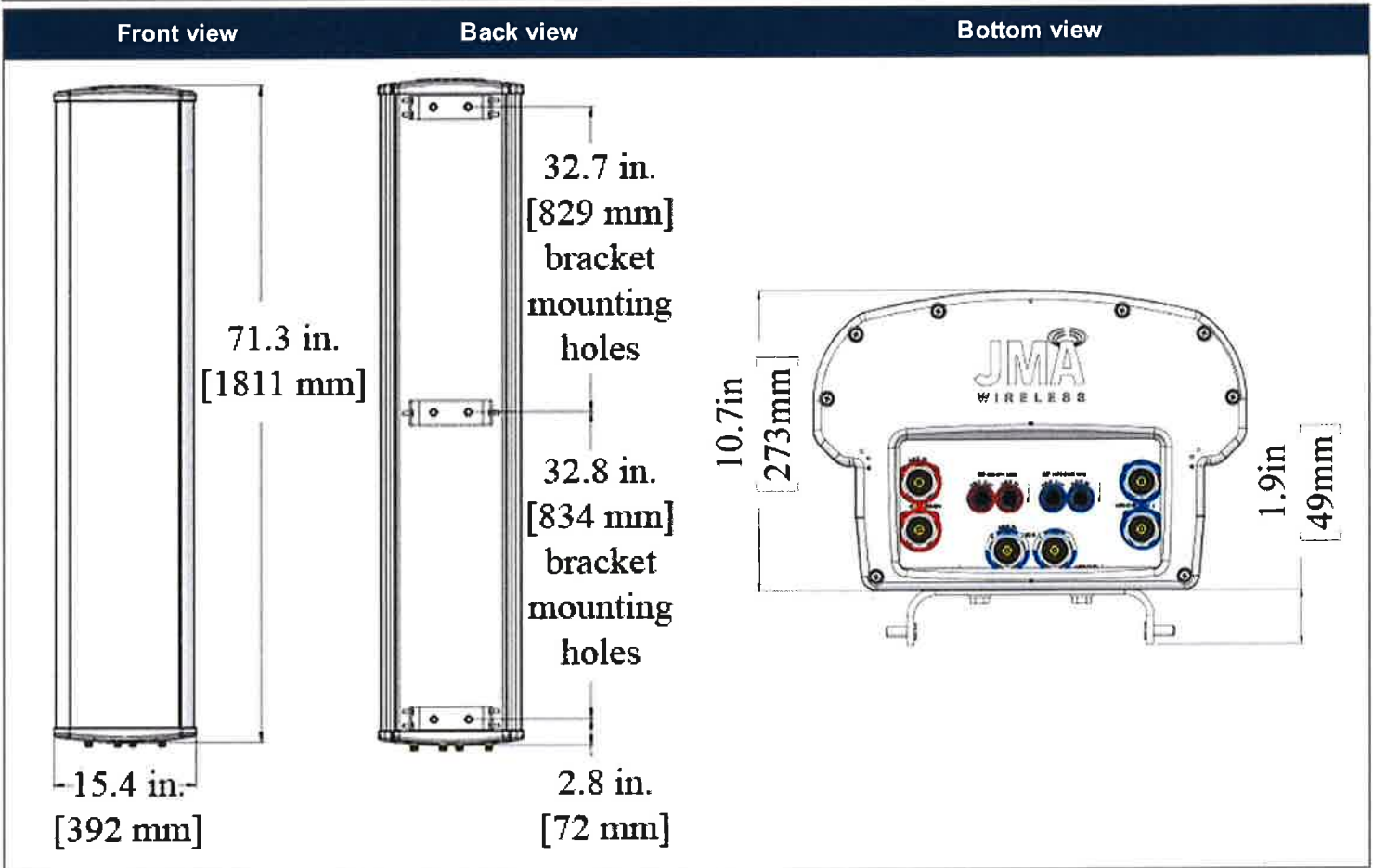


The LTE radio automatically selects the best throughput based on measured SINR.

Electrical specification (minimum/maximum)	Ports 1, 2		Ports 3, 4, 5, 6		
	698-798	824-894	1695-1880	1850-1990	1920-2180
Frequency bands, MHz	698-798	824-894	1695-1880	1850-1990	1920-2180
Polarization	± 45°		± 45°		
Average gain over all tilts, dBi	14.4	14.0	17.6	18.0	18.2
Horizontal beamwidth (HBW), degrees	60.5	53.0	55.0	55.0	55.5
Front-to-back ratio, co-polar power @180°± 30°, dB	>24	>24.0	>25.0	>25.0	>25.0
X-Pol discrimination (CPR) at boresight, dB	>15.0	>14.2	>18	>18	>15
Sector power ratio, percent	<3.5	<3.0	<3.7	<3.8	<3.6
Vertical beamwidth (VBW), degrees ¹	13.1	11.8	6.0	5.5	5.5
Electrical downtilt (EDT) range, degrees	2-14	2-14	0-9		
First upper side lobe (USLS) suppression, dB ¹	≤-15.0	≤-16.5	≤-16.0	≤-16.0	≤-16.0
Min cross-polar isolation, port-to-port, dB	25	25	25	25	25
Max VSWR / return loss, dB	1.5 / -14.0		1.5 / -14.0		
Max passive intermodulation (PIM), 2x20W carrier, dBc	-153		-153		
Max input power per any port, watts	300		250		
Total composite power all ports, watts	1500				

¹ Typical value over frequency and tilt

Mechanical specifications	
Dimensions height/width/depth, inches (mm)	71.3/ 15.4/ 10.7 (1811/ 392/ 273)
Shipping dimensions length/width/height, inches (mm)	82/ 20/ 15 (2083/ 508/ 381)
No. of RF input ports, connector type, and location	6 x 4.3-10 female, bottom
RF connector torque	96 lbf-in (10.85 N·m or 8 lbf-ft)
Net antenna weight, lb (kg)	60 (27.0)
Shipping weight, lb (kg)	90 (41.0)
Antenna mounting and downtilt kit included with antenna	91900318
Net weight of the mounting and downtilt kit, lb (kg)	18 (8.18)
Range of mechanical up/down tilt	-2° to 14°
Rated wind survival speed, mph (km/h)	150 (241)
Frontal, lateral, and rear wind loading @ 150 km/h, lbf (N)	154 (685), 73 (325), 158 (703)
Equivalent flat plate @ 100 mph and Cd=2, sq ft	2.6



Ordering information	
Antenna model	Description
MX06FRO660-03	6F X-Pol HEX FRO 60° independent tilt 700/850 RET, 4.3-10 & SBT
Optional accessories	
AISG cables	M/F cables for AISG connections
PCU-1000 RET controller	Stand-alone controller for RET control and configurations

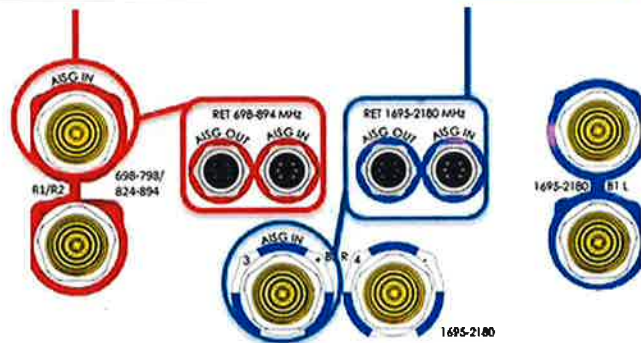
Remote electrical tilt (RET 1000) information	
RET location	Integrated into antenna
RET interface connector type	8-pin AISG connector per IEC 60130-9
RET connector torque	Min 0.5 N·m to max 1.0 N·m (hand pressure & finger tight)
RET interface connector quantity	2 pairs of AISG male/female connectors
RET interface connector location	Bottom of the antenna
Total no. of internal RETs (low bands)	2
Total no. of internal RETs (high bands)	1
RET input operating voltage, vdc	10-30
RET max power consumption, idle state, W	≤ 2.0
RET max power consumption, normal operating conditions, W	≤ 13.0
RET communication protocol	AISG 2.0 / 3GPP

RET and RF connector topology

Each RET device can be controlled either via the designated external AISG connector or RF port as shown below:

RET device	Band	RF port
R1	698-798	1-2
R2	824-894	1-2

RET device	Band	RF port
B1/B2	1695-2180	3-6



Array topology

3 sets of radiating arrays
 R1/R2: 698-894 MHz
 B1: 1695-2180 MHz
 B2: 1695-2180 MHz

Band	RF port
1695-2180	3-4
698-894	1-2
1695-2180	5-6

