



**PRELIMINARY HISTORIC
RESOURCES DETERMINATION**

January 28, 2017

**Verizon Wireless
99 East River Drive
East Hartford, CT 06108**

APT Project No.: CT1414200

**Re: Proposed Hamden 8 Facility
208 Kirk Road
Hamden, Connecticut**

On behalf of Verizon Wireless, All-Points Technology Corporation, P.C. ("APT") performed an evaluation with respect to the proposed Facility's potential impacts on historic resources proximate to the referenced site.

The results of our independent review of sites listed, or eligible for listing, on the National Register of Historic Places ("NRHP") reveals that no such resources are located within one-half mile of the site.¹ One State Registered Historic place is located within approximated 0.4-mile of the site, referred to as the Jeremiah Gilbert House. Historic resource screening maps are provided as attachments.

As part of Verizon Wireless' due diligence for compliance with the National Environmental Policy Act ("NEPA"), APT is currently compiling applicable historic documentation for submission to the State Historic Preservation Office ("SHPO") for this agency's review and determination. The SHPO submission will be prepared by a qualified architectural historian that meets criteria developed by the Secretary of the Interior.

Based on our research, it is APT's opinion that the proposed Facility would have no effect on historic properties listed or eligible for listing on the NRHP. Results of APT's Visibility Analysis (provided under separate cover) indicate that no views of the proposed Facility would be achieved from the Jeremiah Gilbert House property.

A copy of the SHPO's response will be provided to the Siting Council upon receipt.

Sincerely,

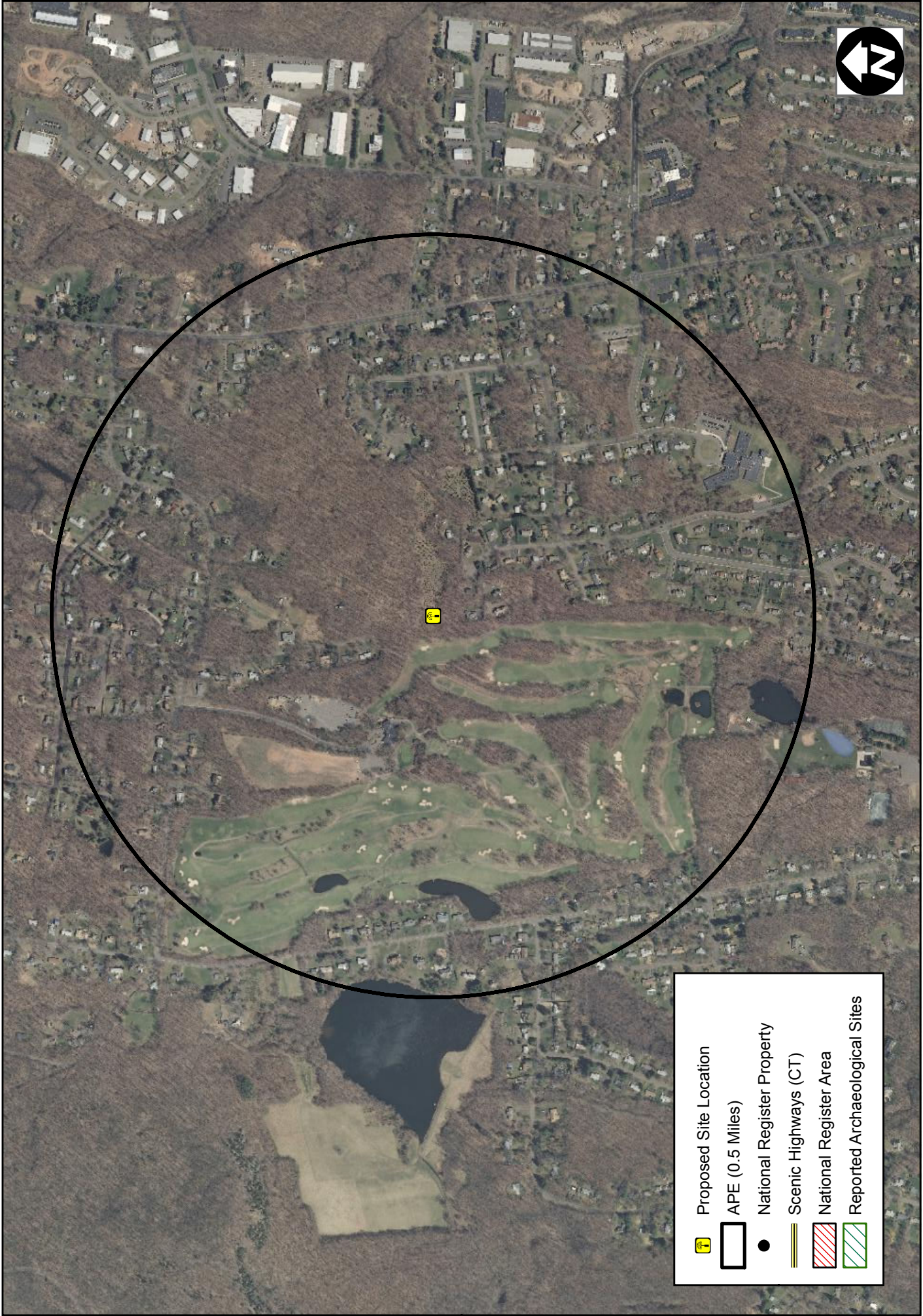
Michael Libertine,
Director of Siting and Permitting

Attachments

¹ For towers under 200 feet tall, the Area of Potential Effect ("APE") has been established at 0.5 mile. This distance represents the APE established cooperatively by the Federal Communications Commission, Advisory Council on Historic Preservation and the National Conference of State Historic Preservation Officers.

Historic Resource Screening Maps

Historic Resource Screening Maps



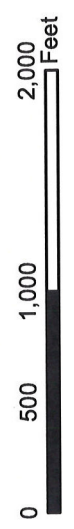
	Proposed Site Location
	APE (0.5 Miles)
	National Register Property
	Scenic Highways (CT)
	National Register Area
	Reported Archaeological Sites

Cultural Resources Screen
Hamden 8 - 208 Kirk Road, Hamden, Connecticut
 January 17, 2017 \ USGS QUAD: New Haven





- Proposed Site Location
- APE (0.5 Miles)
- State Register of Historic Places (1962-2015)
- Areas of potential historic neighborhoods/structures
- State Register Area



Cultural Resources Screen
Hamden 8 - 208 Kirk Road, Hamden, Connecticut
 January 17, 2017 \ USGS QUAD: New Haven