

February 1, 2018

Mr. Robert Stein, Chairman
Connecticut Siting Council
Ten Franklin Square
New Britain, CT 06051

RE: Docket No. 468: Southwest Connecticut Reliability Project
Monthly Construction Progress Report –January 2018

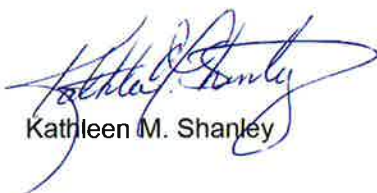
Dear Chairman Stein:

Pursuant to RCSA Section 16-50j-62(b)(3) and as described in Volume 3, Section A.3.3, of the Southwest Connecticut Reliability Project (Project) *Development and Management (D&M) Plans for the New 115-kV Transmission Line and the Modifications to the Plumtree and Stony Hill Substations*, The Connecticut Light and Power Company doing business as Eversource Energy (Eversource) hereby provides to the Connecticut Siting Council (“Council”) this Project Construction Progress Report for the month of January 2018.

This Construction Progress Report pertains to work on the new 115-kilovolt (kV) transmission line, as well as to the Project activities at Stony Hill Substation and the associated 115-kV line reconfigurations at that substation. Project construction activities at Plumtree Substation will not commence until later this year.

Should you or other Council members have any questions regarding this submission, please do not hesitate to contact me via e-mail at kathleen.shanley@eversource.com or telephone at (860) 728-4527.

Sincerely,



Kathleen M. Shanley

Enclosure

DOCKET NO. 468
SOUTHWEST CONNECTICUT RELIABILITY PROJECT
MONTHLY CONSTRUCTION PROGRESS REPORT
JANUARY 2018

1. NEW 115-kV TRANSMISSION LINE

In January 2018, vegetation clearing activities along the new 115-kV transmission line right-of-way (ROW) continued and have now been largely completed. In addition, civil work (e.g., roads/pads) commenced. Table 1 (in Attachment 1) illustrates the status of the transmission line construction work as of January 31, 2018.

2. MODIFICATIONS TO STONY HILL SUBSTATION

The Project construction modifications to Stony Hill Substation and the associated reconfiguration of the 115-kilovolt (kV) 1770 and 1887 line connections to the substation commenced on September 18, 2017. During January 2018, the 115-kV duct bank was completed.

Attachment 1, Table 2 summarizes the status of this work as of January 31, 2018.

3. MINOR DEVELOPMENT & MANAGEMENT (D&M) PLAN CHANGES

In the past month, one minor change, as described below, was identified to the D&M Plan for the new 115-kV transmission line.

1. Access Road Modification, Volume 2, Mapsheets 4 & 5, City of Danbury

After the initiation of vegetation clearing activities near Structure 1009, located on City of Danbury property (Line List #306) near the Danbury Landfill, Eversource determined that a portion of the access road between Structures 1008 and 1009, depicted on the D&M Plan map sheets as a “new access road”, is a pre-existing road, having been previously used for management of the existing 345-kV/115 kV lines that presently occupy the ROW. Eversource has revised Map sheets 4 and 5 to show the road as existing and to better illustrate the associated vegetation clearing limits.

In addition, due to steep terrain east and north of the Structure 1009 work pad, Eversource proposes to shift and slightly expand the width of the ROW access road connection to the existing Danbury Landfill access road. This minor access road shift to the south will facilitate equipment turning, both from the Danbury Landfill access road to the ROW and within the work pad for Structure 1009. Eversource consulted with the City of Danbury regarding this minor modification. This modification also is depicted on revised Map sheet 5.

ATTACHMENT 1

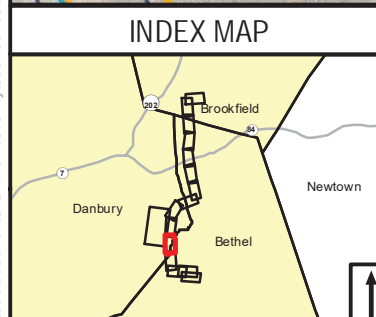
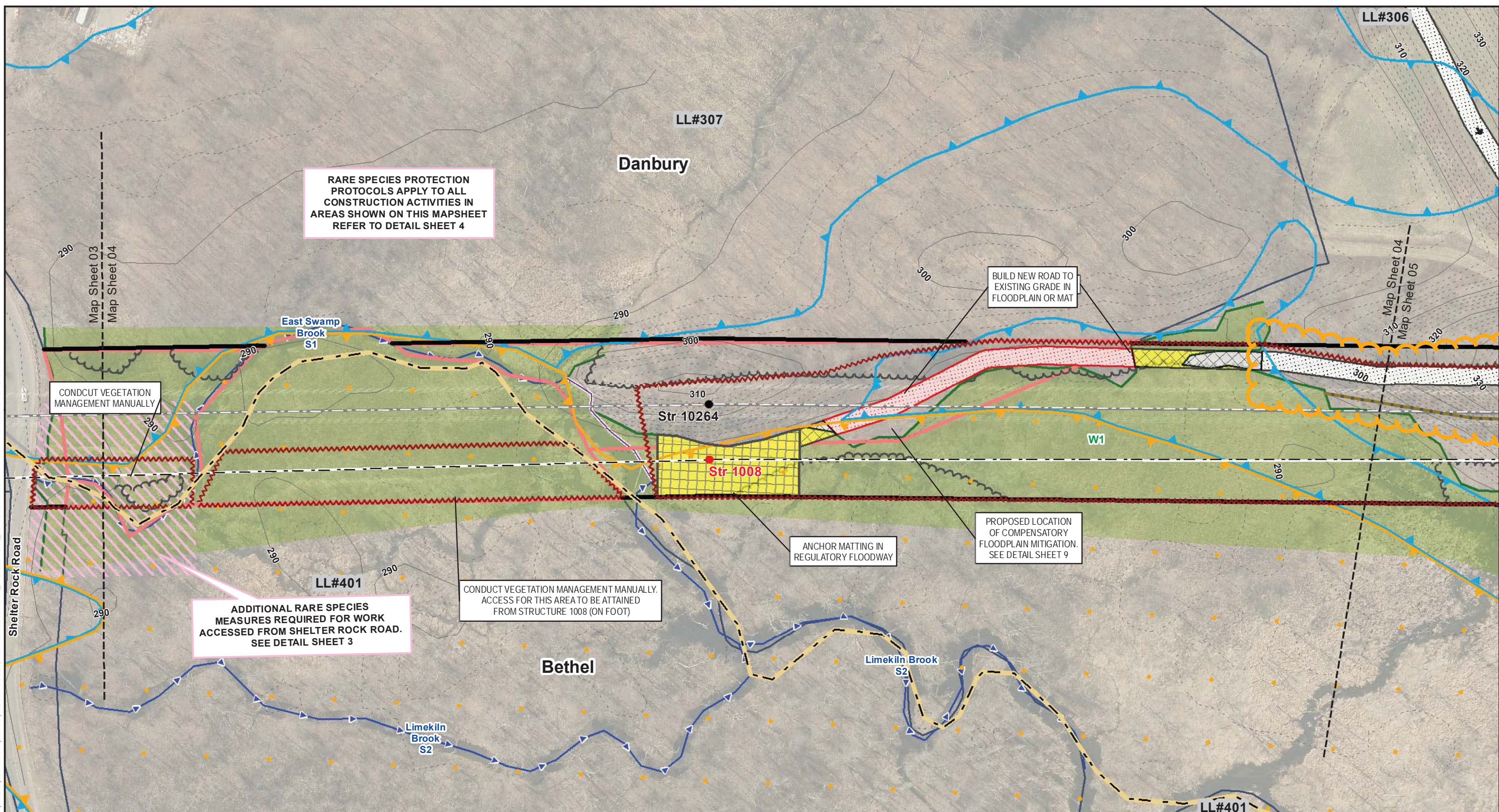
**Table 1
Transmission Line Construction Progress
(January 31, 2018)**

SWCT RELIABILITY PROJECT (115-KV 1887 Line) Construction Progress Report 1/31/2018		Transmission									
		ROW Clearing ROW Clearing (% Complete)	Work Area Preparation Access Roads/Work Pads (% Complete)	Foundation Installation		Structure Installation		Wire Stringing (or Cable Installation)	Restoration (% Complete)		
				Foundations Installed	Total Foundations (% Complete)	Structures Installed	Total Structures (% Complete)				
Town	Length of Transmission Line (Miles)										
Bethel	2.2	100%	20%	17		17					
Danbury	0.9	100%		6		6					
Brookfield	0.3	100%		5	0%	0	5	0%		0%	0%
Total Project		100%	20%	0	28	0%	0	28	0%	0%	0%

**Table 2
Substation Construction Progress
(January 31, 2018)**

Project Activity (% Complete)							
Location (Substation)	Substation Work			Line Reconfiguration Work			
	Construction Start Date	Site Preparation	Equipment Installation	Testing	Construction Start Date	Structure Installation	Wire Stringing
Plumtree					n/a	n/a	n/a
Stony Hill	9/18/2017	80%	35%	0%	9/18/2017	33%	0%

1/11/2018 10:18:36 AM
 I:\bcs\lwr\GIS-WOR\GIS\Proj\951504\Output\Maps\MXD\Report\Map\Plumtree\DanDMP\Plans_20170131.mxd



Legend	
● Proposed 1887 Line Structure	□ Work Pads
● Existing Structure	▨ Existing Access Road
— Existing Right-of-Way	▨ Existing Alternate Access Road
- - Proposed 115-kV Line (Centerline)	▨ New Access Road
- - Existing Transmission Line (Centerline)	▨ New Temporary Access Road
— 10' Contour Line	▨ Construction Matting
- - 2' Contour Line	▨ Temporary Wetland Impact
— Limit of Disturbance	— Limit of Disturbance
— Existing Tree Line	— Existing Tree Line
— Vegetation Removal Limits	— Vegetation Removal Limits
— Intermittent Stream Line	— Intermittent Stream Line
— Perennial Watercourse	— Perennial Watercourse
— Ordinary High Water Mark	— Ordinary High Water Mark
— Wetland Boundary	— Wetland Boundary
— Wetland Area	— Wetland Area
— CT Wetland Only	— CT Wetland Only
— Rare Species	— Rare Species
— Regulatory Floodway Zone	— Regulatory Floodway Zone
— 100 Year Flood Zone	— 100 Year Flood Zone
— Eversource Property	— Eversource Property
— Parcels	— Parcels
— Municipal Boundary	— Municipal Boundary
— LL#100 Line List Label	— LL#100 Line List Label
— Map Sheet Matchline	— Map Sheet Matchline

1	1/11/2018	1/17	Modifications to Existing/ New Access, Roads, Existing Tree Line, & Vegetation Removal Limits depictions					
NO.	DATE	REVISIONS	BY	CHK	APP	APP		

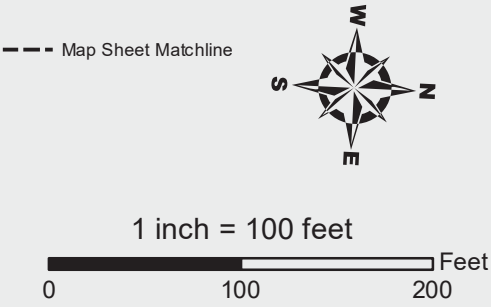
EVERSOURCE

Southwest Connecticut Reliability Project Development & Management Plan

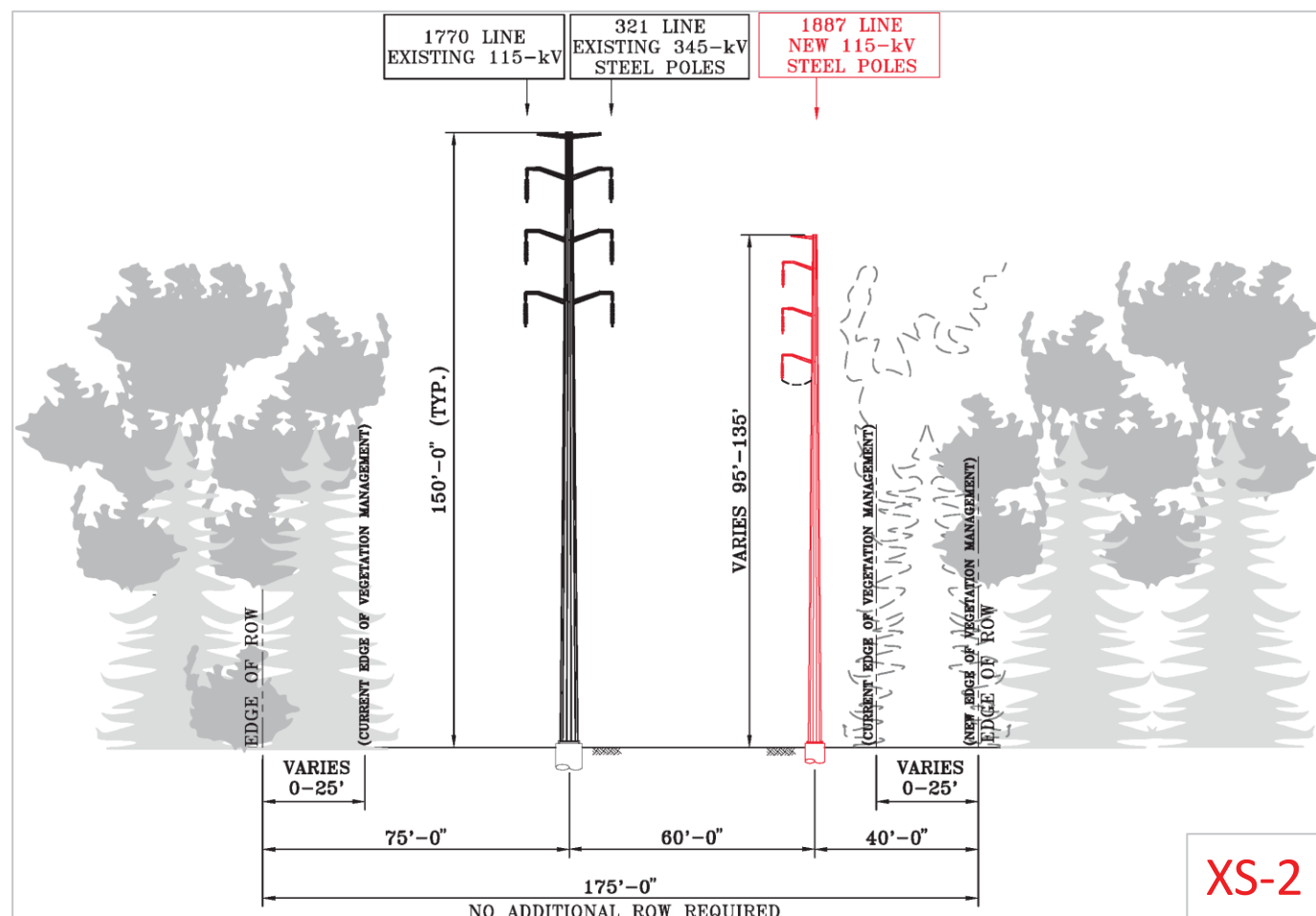
Bethel & Danbury, CT Map Sheet 04 of 13

Date: June 2017 Map Author: K. Gabriel

BSC GROUP



SWCT Reliability Project Mapsheet 05 Notes



SITE SPECIFIC NOTES

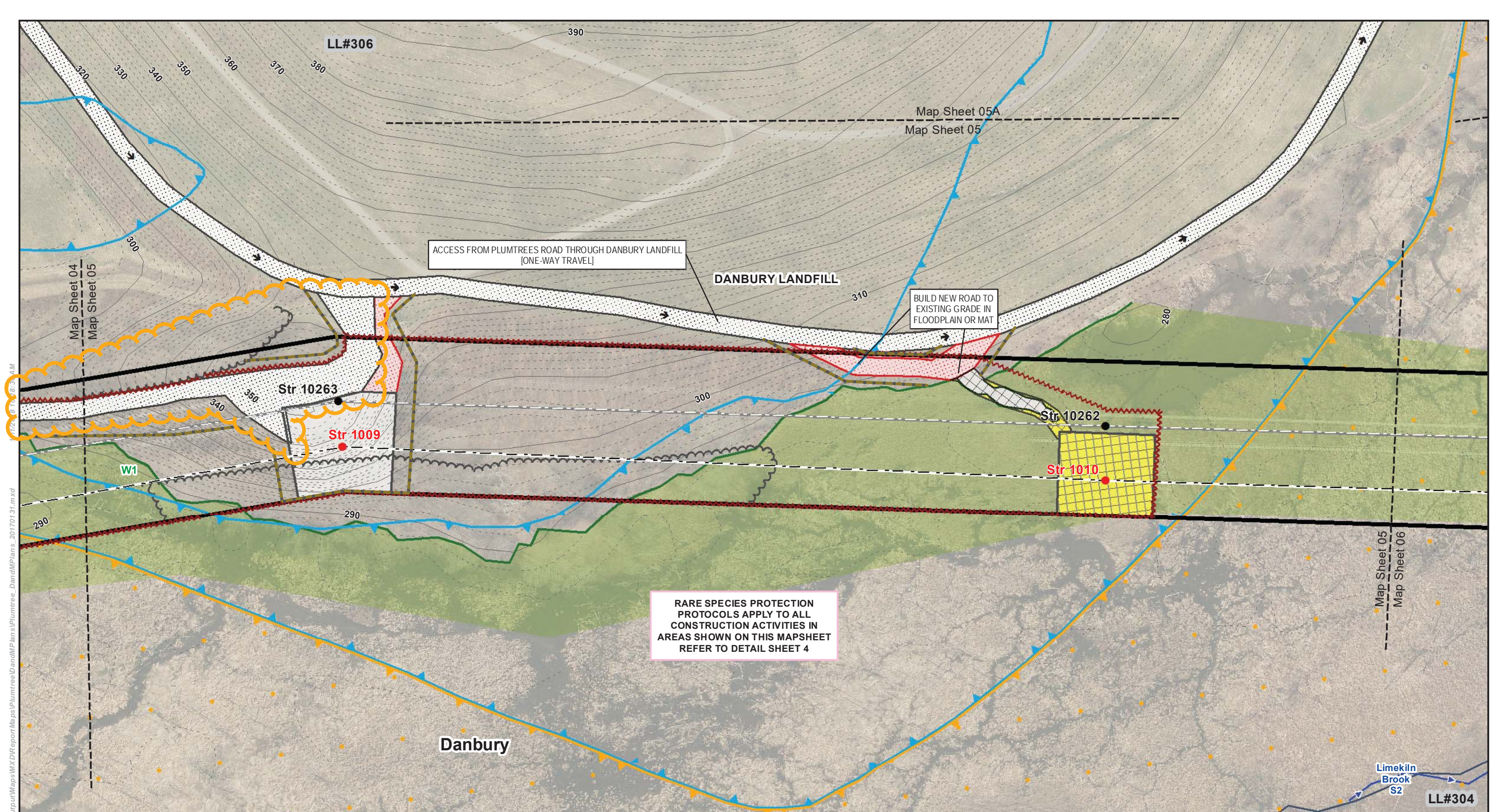
- REFER TO DETAIL SHEETS 2 A&B FOR WORK IN OR NEAR WETLANDS, WATERCOURSES, OR FLOODPLAINS. KEY BMPS ARE BRIEFLY INCLUDED BELOW.
- ALL ACCESS AND WORK PAD AREAS IN THE REGULATORY FLOODWAY SHALL USE ANCHORED TEMPORARY CONSTRUCTION MATS. WITHIN THE 100-YEAR FLOODPLAIN, GRAVEL ACCESS/WORK AREAS SHALL BE CONSTRUCTED AT OR BELOW THE EXISTING GRADE (SEE DETAIL SHEET B AS SPECIFIED FOR FLOODPLAINS). EXCESS MATERIAL SHALL BE REMOVED FROM THE SITE OR SPREAD OUTSIDE OF THE 100-YEAR FLOODPLAIN AND WETLAND RESOURCE AREAS.
- NO OVERNIGHT PARKING OR STORAGE OF EQUIPMENT ALLOWED WITHIN THE 100-YEAR FLOODPLAIN OR REGULATORY FLOODWAY. NO REFUELING OR STORAGE OF FUELS OR HAZARDOUS MATERIALS IN THE FLOODPLAIN. EXCEPTIONS AND BMPS ALSO APPLY, SEE DETAIL SHEET 2 A&B.
- RARE SPECIES BMPS APPLY TO ALL AREAS DEPICTED ON THIS PAGE. CONTACT EVERSOURCE LICENSING AND PERMITTING FOR ADDITIONAL DETAILS AND SITE-SPECIFIC INFORMATION PRIOR TO INITIATION OF WORK IN THESE AREAS. BMPS AND TIMING RESTRICTIONS ARE DISCUSSED IN DETAIL SHEETS 3 AND 4, WHICH ALSO DEPICT GENERAL ARRANGEMENTS FOR MATTING IN WETLAND W1.
- ALL PROJECT CONSTRUCTION ACTIVITIES IN WETLANDS SHALL BE CONTAINED WITHIN THE LOCATION AND ALIGNMENT OF DEPICTED WORK PADS AND ACCESS ROADS. ALL ACCESS/WORK AREAS IN WETLANDS MUST USE TEMPORARY CONSTRUCTION MATTING. ACCESS OR WORK AREAS ACROSS ANY WATERCOURSES MUST SPAN THE FULL WIDTH OF ITS BANKS, TO THE EXTENT PRACTICABLE.
- IN WETLANDS, DEWATERING FLUIDS SHALL BE PUMPED INTO A FRAC TANK OR WATER TRUCK, OR AS SPECIFIED IN EVERSOURCE'S BMP MANUAL. DEWATERING FLUIDS SHALL BE HANDLED AS SPECIFIED IN EVERSOURCE'S BMP MANUAL.
- VEGETATION MANAGEMENT IN WETLANDS AND OTHER SENSITIVE AREAS SHALL FOLLOW LOW IMPACT TREE CLEARING METHODS DESCRIBED IN VOLUME 3 ATTACHMENT B. THIS MAY INCLUDE, WHERE PRACTICABLE, PRESERVING DESIRED SPECIES, LEAVING STUMPS AND ROOTS INTACT FOR SOIL STABILITY, AND SELECTIVELY REMOVING VEGETATION WITHIN 25-FT OF STREAM BANKS. ADDITIONAL BMPS ALSO APPLY FOR RARE SPECIES (SEE DETAIL SHEETS 3 AND 4).
- ALL PROJECT WETLANDS HAVE KNOWN POPULATIONS OF INVASIVE SPECIES, THEREFORE ADHERENCE TO THE WETLAND INVASIVE SPECIES CONTROL PLAN APPLIES FOR ALL MATTING AND EQUIPMENT IN WETLANDS.
- INSTALL CONSTRUCTION ENTRANCE TRACK PAD FOR ROADWAY PROTECTION AND EROSION AND SEDIMENT CONTROL. LINE TRACKING PAD WITH GEOTEXTILE FABRIC AND REMOVE TRACKING PAD AFTER CONSTRUCTION. MAINTAIN IF TRACKING PAD BECOMES CLOGGED WITH SOIL. ANY SEDIMENT TRACKED ONTO THE ROAD SURFACE SHALL BE SWEEPED CLEAN AT THE END OF EACH WORK DAY. REFER TO EVERSOURCE'S BMP MANUAL (2016) PAGE 3-8 AND 3-9 AND D&M PLAN DETAIL SHEET 5C.

GENERAL NOTES

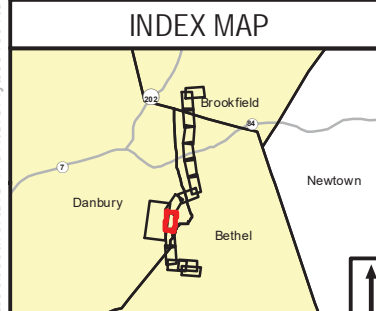
NOTES BELOW PROVIDE A SUMMARY OF BMPS. REFER TO DETAIL SHEETS 2-5, D&M PLAN VOLUME 3, AND THE MAPSHEET SPECIFIC NOTES (BELOW) FOR ADDITIONAL INFORMATION. REFER TO DETAIL SHEETS 8 A&B FOR CROSS-SECTIONAL DEPICTIONS OF TYPICAL ACCESS ROADS, FILL IN FLOODPLAINS, AND (TEMPORARY) FILL MATERIAL IN RESIDENTIAL AREAS OR LAWNS.

- THE LIMITS OF VEGETATION MANAGEMENT, AS SHOWN, DEFINE AREAS WHERE VEGETATION REMOVAL AND GRUBBING, GRADING, AND EXCAVATION MAY OCCUR. MINOR DEVIATIONS MAY BE REQUIRED IN SOME LOCATIONS. ADDITIONALLY, DANGER OR HAZARD TREE REMOVAL MAY BE REQUIRED OUTSIDE OF THE VEGETATION REMOVAL LIMITS. VEGETATION REMOVAL EQUIPMENT MAY OPERATE ANYWHERE WITHIN THE LIMITS OF VEGETATION MANAGEMENT IN UPLANDS. IN WETLANDS AND ACROSS WATER RESOURCES, TEMPORARY CLEARING ROUTES (CONSISTING OF TIMBER MATS OR EQUIVALENT) WOULD BE USED BY THE CLEARING CONTRACTOR ONLY (THESE ARE NOT DEPICTED ON THE MAPSHEETS AND WILL BE DETERMINED BASED ON FIELD CONDITIONS AT THE TIME OF CONSTRUCTION). REFER TO DETAIL SHEETS 2 A&B FOR ADDITIONAL MEASURES IN WETLAND RESOURCE AREAS.
- ALL WORK WILL BE CONDUCTED IN ACCORDANCE WITH THE RELEVANT PORTIONS OF EVERSOURCE'S "BEST MANAGEMENT PRACTICES MANUAL FOR MASSACHUSETTS AND CONNECTICUT (SEPTEMBER 2016)" (BMP MANUAL), UNLESS MORE STRINGENT PROJECT-SPECIFIC MEASURES APPLY. ALL WORK WILL BE CONDUCTED IN ACCORDANCE WITH THE REQUIREMENTS OF SITING APPROVALS FROM THE COUNCIL AND REGULATORY APPROVALS FROM THE U.S. ARMY CORPS OF ENGINEERS AND THE CONNECTICUT DEPARTMENT OF ENERGY AND ENVIRONMENTAL PROTECTION, AND WITH ALL PROJECT PROTOCOLS. REFER TO DETAIL SHEETS 2-5 AND D&M PLAN VOLUME 3.
- EROSION AND SEDIMENTATION CONTROL MEASURES WILL BE INSTALLED DURING CONSTRUCTION, AS REQUIRED, TO COMPLY WITH THE PROVISIONS, AS APPLICABLE, OF THE 2002 CONNECTICUT GUIDELINES FOR SOIL EROSION AND SEDIMENT CONTROL, EVERSOURCE'S BMP MANUAL, AND REGULATORY APPROVALS.
- EXISTING CULVERTS WILL BE PROTECTED, AS DEEMED NECESSARY, TO PREVENT DAMAGE DURING CONSTRUCTION. INLET PROTECTION SHALL BE INSTALLED FOR ANY STORMWATER CATCH BASIN WITHIN THE WORK ZONE.
- ACCESS ROADS SHALL BE CONSTRUCTED AND CONFORM TO ADDITIONAL REQUIREMENTS AS INDICATED ON MAPPING WITHIN FLOODPLAINS, RESIDENTIAL AREAS, AND LAWNS (SEE DETAIL SHEET 8 A&B). ACCESS ROADS SHALL HAVE A MAXIMUM TRAVEL SURFACE OF 16 FEET IN WIDTH WITH SHOULDERS OF UP TO 2- FEET IN WIDTH, UNLESS INCREASED WIDTH IS REQUIRED FOR SAFE CONSTRUCTION, AS INDICATED ON THE MAPPING (E.G. TO ALLOW EQUIPMENT TURNING RADII AT CURVES IN ROADS OR AT THE INGRESS/EGRESS POINTS FROM A PUBLIC ROAD OR WORK AREA).
- THE LIMIT OF DISTURBANCE DEPICTED ON THE MAPPING REFLECTS AREAS WHERE GRADING MAY BE NECESSARY DUE TO SITE CONSTRAINTS SUCH AS STEEP TOPOGRAPHY.
- PAVED SURFACES SHALL BE PROTECTED DURING CONSTRUCTION AS NECESSARY AND ANY DAMAGE TO SUCH SURFACES SHALL BE REPAIRED AT THE EXPENSE OF THE CONTRACTOR. SAFETY SIGNAGE TO INDICATE CONSTRUCTION WORK ZONES SHALL BE INSTALLED ALONG PUBLIC ROADS AS NECESSARY AND AS REQUIRED THROUGH COORDINATION WITH STATE AND LOCAL ENTITIES.
- SPOILS RESULTING FROM CONSTRUCTION ACTIVITIES MAY BE SPREAD WITHIN THE LIMITS OF VEGETATION MANAGEMENT. SPOILS SHALL NOT BE PERMANENTLY SPREAD WITHIN EXISTING MAINTAINED YARDS/LAWNS OR SENSITIVE ENVIRONMENTAL RESOURCE AREAS. HOWEVER, TEMPORARY STOCKPILING OF SPOILS IS PERMISSIBLE PROVIDED SEDIMENT IS ADEQUATELY CONTAINED AND DISTURBED AREAS RESTORED TO PRE-EXISTING CONDITIONS.

Str #	X-SEC	DESCRIPTION	HEIGHT (FT)	FINISH	FOUNDATION
1009	2	VERTICAL RUNNING ANGLE	95	WEATHERING STEEL	DRILLED SHAFT
1010	2	VERTICAL TANGENT	98	WEATHERING STEEL	DRILLED SHAFT
Line List	Owner Name		Site Address	Municipality	State
304	FLORENCE IAPALUCCIO TRUSTEE OF MLNM TRUST		21-57 OLD SHERMAN TP	DANBURY	CT
306	CITY OF DANBURY LANDFILL		23 PLUMTREES RD	DANBURY	CT

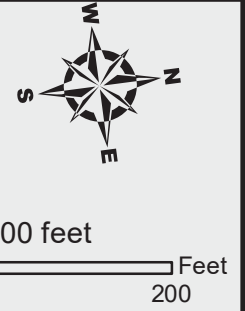


RARE SPECIES PROTECTION PROTOCOLS APPLY TO ALL CONSTRUCTION ACTIVITIES IN AREAS SHOWN ON THIS MAPSHEET REFER TO DETAIL SHEET 4



Legend

- Proposed 1887 Line Structure
- Existing Structure
- Existing Right-of-Way
- Proposed 115-kV Line (Centerline)
- Existing Transmission Line (Centerline)
- 10' Contour Line
- 2' Contour Line
- Work Pads
- Existing Access Road
- Existing Alternate Access Road
- New Access Road
- New Temporary Access Road
- Construction Matting
- Temporary Wetland Impact
- Limit of Disturbance
- Existing Tree Line
- Vegetation Removal Limits
- Intermittent Stream Line
- Perennial Watercourse
- Ordinary High Water Mark
- Wetland Boundary
- Wetland Area
- CT Wetland Only
- Rare Species
- Regulatory Floodway Zone
- 100 Year Flood Zone
- Eversource Property
- Parcels
- Municipal Boundary
- LL#100 Line List Label
- Map Sheet Matchline



NO.	DATE	REVISIONS	BY	CHK	APP	APP
1	1/11/17	Modifications to Existing/ New Access, Roads, Existing Tree Line, Vegetation Removal Limits, & Limit of Disturbance depictions				

EVERSOURCE
 Southwest Connecticut Reliability Project
 Development & Management Plan

Danbury, CT
 Date: June 2017

Map Sheet 05 of 13
 Map Author: K. Gabriel

BSC GROUP

SWCT Reliability Project Mapsheet 05A Notes

GENERAL NOTES

NOTES BELOW PROVIDE A SUMMARY OF BMPS. REFER TO DETAIL SHEETS 2-5, D&M PLAN VOLUME 3, AND THE MAPSHEET SPECIFIC NOTES (BELOW) FOR ADDITIONAL INFORMATION. REFER TO DETAIL SHEETS 8 A&B FOR CROSS-SECTIONAL DEPICTIONS OF TYPICAL ACCESS ROADS, FILL IN FLOODPLAINS, AND (TEMPORARY) FILL MATERIAL IN RESIDENTIAL AREAS OR LAWNS.

1. THE LIMITS OF VEGETATION MANAGEMENT, AS SHOWN, DEFINE AREAS WHERE VEGETATION REMOVAL AND GRUBBING, GRADING, AND EXCAVATION MAY OCCUR. MINOR DEVIATIONS MAY BE REQUIRED IN SOME LOCATIONS. ADDITIONALLY, DANGER OR HAZARD TREE REMOVAL MAY BE REQUIRED OUTSIDE OF THE VEGETATION REMOVAL LIMITS. VEGETATION REMOVAL EQUIPMENT MAY OPERATE ANYWHERE WITHIN THE LIMITS OF VEGETATION MANAGEMENT IN UPLANDS. IN WETLANDS AND ACROSS WATER RESOURCES, TEMPORARY CLEARING ROUTES (CONSISTING OF TIMBER MATS OR EQUIVALENT) WOULD BE USED BY THE CLEARING CONTRACTOR ONLY (THESE ARE NOT DEPICTED ON THE MAPSHEETS AND WILL BE DETERMINED BASED ON FIELD CONDITIONS AT THE TIME OF CONSTRUCTION). REFER TO DETAIL SHEETS 2 A&B FOR ADDITIONAL MEASURES IN WETLAND RESOURCE AREAS.
2. ALL WORK WILL BE CONDUCTED IN ACCORDANCE WITH THE RELEVANT PORTIONS OF EVERSOURCE'S "BEST MANAGEMENT PRACTICES MANUAL FOR MASSACHUSETTS AND CONNECTICUT (SEPTEMBER 2016)" (BMP MANUAL), UNLESS MORE STRINGENT PROJECT-SPECIFIC MEASURES APPLY. ALL WORK WILL BE CONDUCTED IN ACCORDANCE WITH THE REQUIREMENTS OF SITING APPROVALS FROM THE COUNCIL AND REGULATORY APPROVALS FROM THE U.S. ARMY CORPS OF ENGINEERS AND THE CONNECTICUT DEPARTMENT OF ENERGY AND ENVIRONMENTAL PROTECTION, AND WITH ALL PROJECT PROTOCOLS. REFER TO DETAIL SHEETS 2-5 AND D&M PLAN VOLUME 3.
3. EROSION AND SEDIMENTATION CONTROL MEASURES WILL BE INSTALLED DURING CONSTRUCTION, AS REQUIRED, TO COMPLY WITH THE PROVISIONS, AS APPLICABLE, OF THE 2002 CONNECTICUT GUIDELINES FOR SOIL EROSION AND SEDIMENT CONTROL, EVERSOURCE'S BMP MANUAL, AND REGULATORY APPROVALS.
4. EXISTING CULVERTS WILL BE PROTECTED, AS DEEMED NECESSARY, TO PREVENT DAMAGE DURING CONSTRUCTION. INLET PROTECTION SHALL BE INSTALLED FOR ANY STORMWATER CATCH BASIN WITHIN THE WORK ZONE.
5. ACCESS ROADS SHALL BE CONSTRUCTED AND CONFORM TO ADDITIONAL REQUIREMENTS AS INDICATED ON MAPPING WITHIN FLOODPLAINS, RESIDENTIAL AREAS, AND LAWNS (SEE DETAIL SHEET 8 A&B). ACCESS ROADS SHALL HAVE A MAXIMUM TRAVEL SURFACE OF 16 FEET IN WIDTH WITH SHOULDERS OF UP TO 2- FEET IN WIDTH, UNLESS INCREASED WIDTH IS REQUIRED FOR SAFE CONSTRUCTION, AS INDICATED ON THE MAPPING (E.G. TO ALLOW EQUIPMENT TURNING RADII AT CURVES IN ROADS OR AT THE INGRESS/EGRESS POINTS FROM A PUBLIC ROAD OR WORK AREA).
6. THE LIMIT OF DISTURBANCE DEPICTED ON THE MAPPING REFLECTS AREAS WHERE GRADING MAY BE NECESSARY DUE TO SITE CONSTRAINTS SUCH AS STEEP TOPOGRAPHY.
7. PAVED SURFACES SHALL BE PROTECTED DURING CONSTRUCTION AS NECESSARY AND ANY DAMAGE TO SUCH SURFACES SHALL BE REPAIRED AT THE EXPENSE OF THE CONTRACTOR. SAFETY SIGNAGE TO INDICATE CONSTRUCTION WORK ZONES SHALL BE INSTALLED ALONG PUBLIC ROADS AS NECESSARY AND AS REQUIRED THROUGH COORDINATION WITH STATE AND LOCAL ENTITIES.
8. SPOILS RESULTING FROM CONSTRUCTION ACTIVITIES MAY BE SPREAD WITHIN THE LIMITS OF VEGETATION MANAGEMENT. SPOILS SHALL NOT BE PERMANENTLY SPREAD WITHIN EXISTING MAINTAINED YARDS/LAWNS OR SENSITIVE ENVIRONMENTAL RESOURCE AREAS. HOWEVER, TEMPORARY STOCKPILING OF SPOILS IS PERMISSIBLE PROVIDED SEDIMENT IS ADEQUATELY CONTAINED AND DISTURBED AREAS RESTORED TO PRE-EXISTING CONDITIONS.

Line List	Owner Name	Site Address	Municipality	State
305	KILCO LLC	OLD SHERMAN TP	DANBURY	CT
306	CITY OF DANBURY LANDFILL	23 PLUMTREES RD	DANBURY	CT
307	LAZY CREEK MILLS LLC	25 PLUMTREES RD	DANBURY	CT