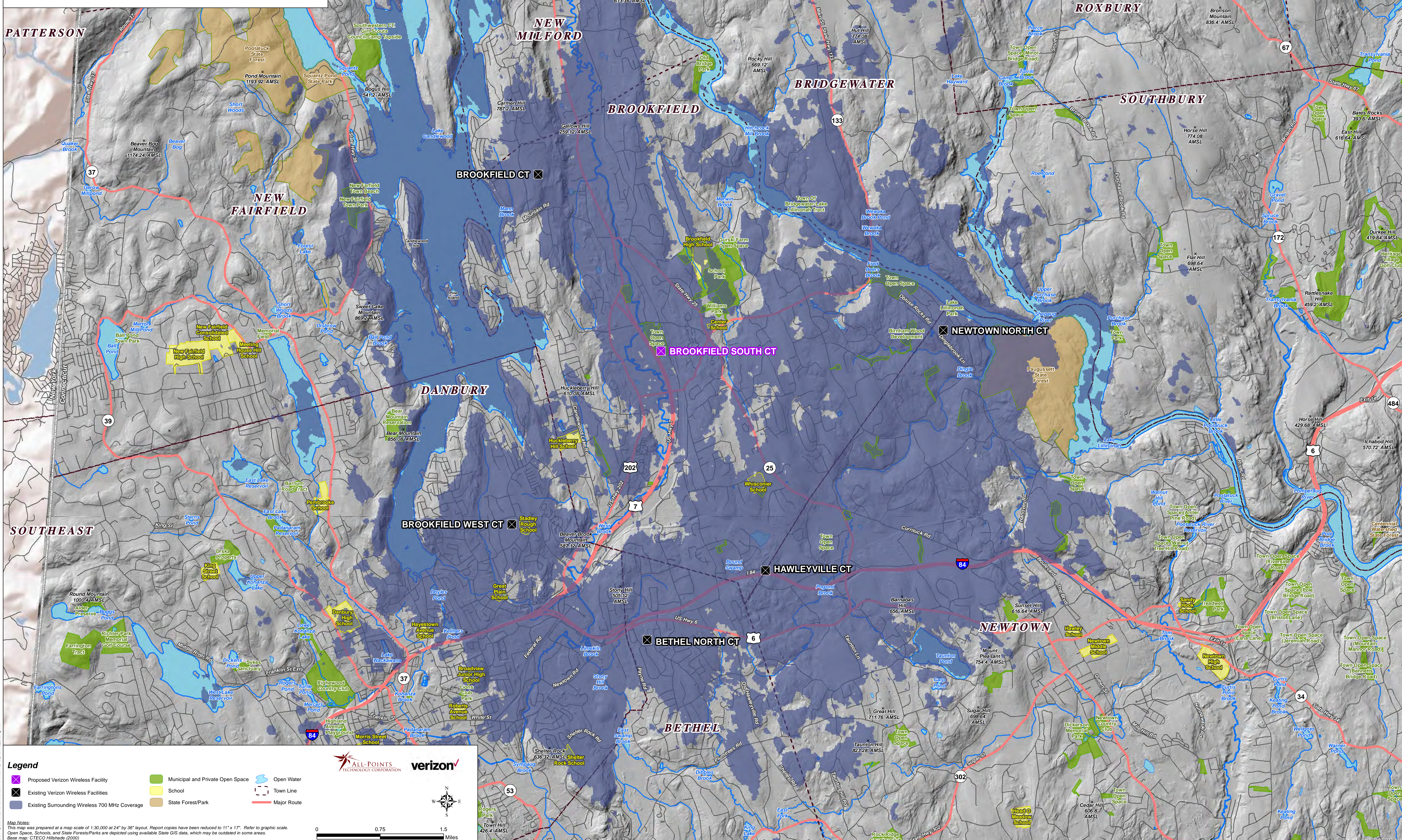


**Existing Verizon Wireless 700 MHz Coverage
with an Antenna Centerline Height of 146' AGL
Brookfield, Connecticut and Surrounding Area
(*Map Scale is 1:30,000)**

Coverage is depicted at a signal threshold of 120 dB Operational Path Loss



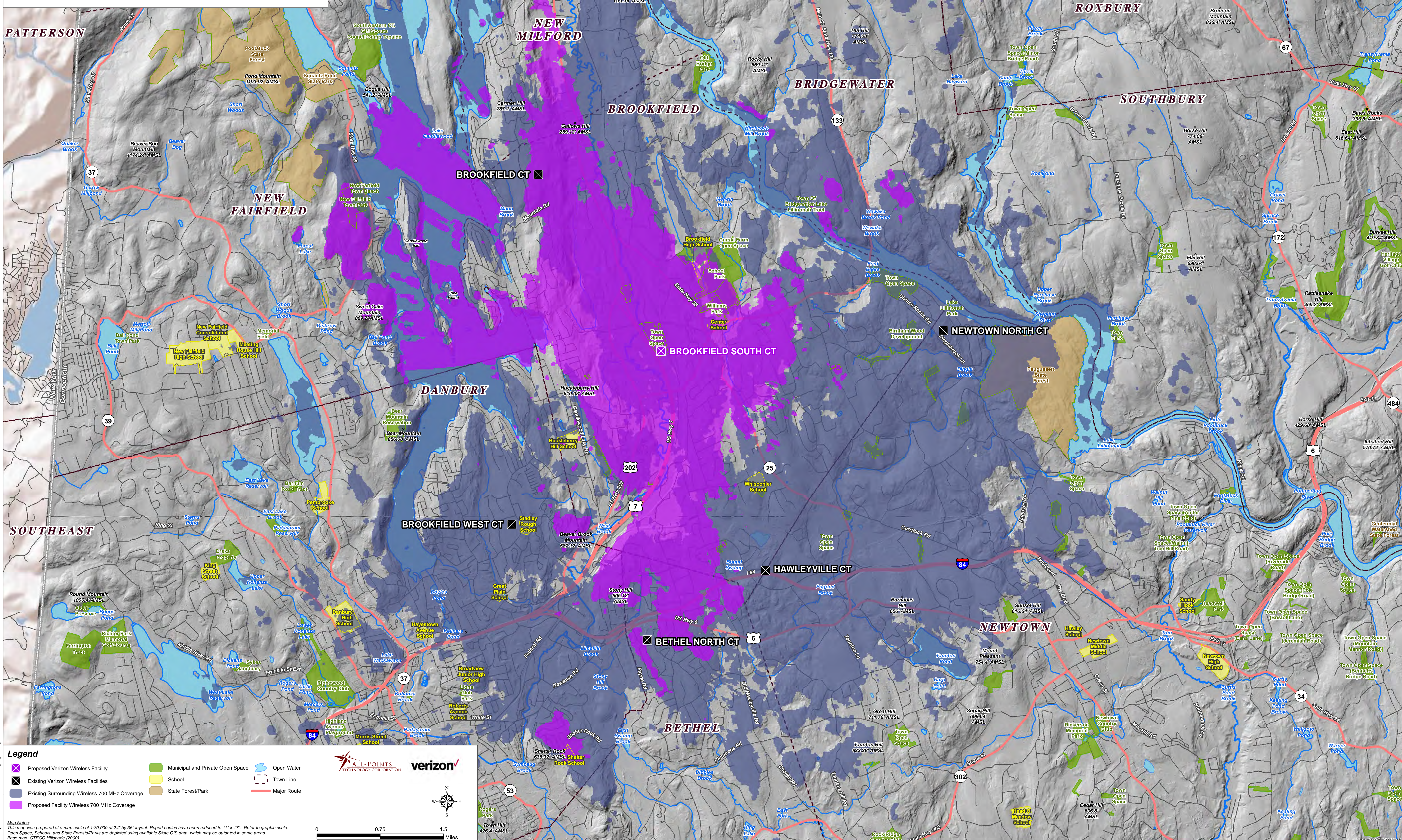
- Legend**
- ✖ Proposed Verizon Wireless Facility
 - ✖ Existing Verizon Wireless Facilities
 - Existing Surrounding Wireless 700 MHz Coverage
 - Municipal and Private Open Space
 - School
 - State Forest/Park
 - Open Water
 - Town Line
 - Major Route

Map Notes:
This map was prepared at a map scale of 1:30,000 at 24" by 36" layout. Report copies have been reduced to 11" x 17". Refer to graphic scale.
Open Space, Schools, and State Forests/Parks are depicted using available State GIS data, which may be outdated in some areas.
Base map: CTECO Hillshade (2000)

Copyright © 2014 Verizon Wireless

**Proposed Verizon Wireless 700 MHz Coverage
with an Antenna Centerline Height of 146' AGL
Brookfield, Connecticut and Surrounding Area
(*Map Scale is 1:30,000)**

Coverage is depicted at a signal threshold of 120 dB Operational Path Loss



Legend

- Proposed Verizon Wireless Facility
- Existing Verizon Wireless Facilities
- Existing Surrounding Wireless 700 MHz Coverage
- Proposed Facility Wireless 700 MHz Coverage
- Municipal and Private Open Space
- School
- State Forest/Park
- Open Water
- Town Line
- Major Route

Map Notes:
This map was prepared at a map scale of 1:30,000 at 24" by 36" layout. Report copies have been reduced to 11" x 17". Refer to graphic scale.
Open Space, Schools, and State Forests/Parks are depicted using available State GIS data, which may be outdated in some areas.
Base map: CTECO Hillshade (2000)

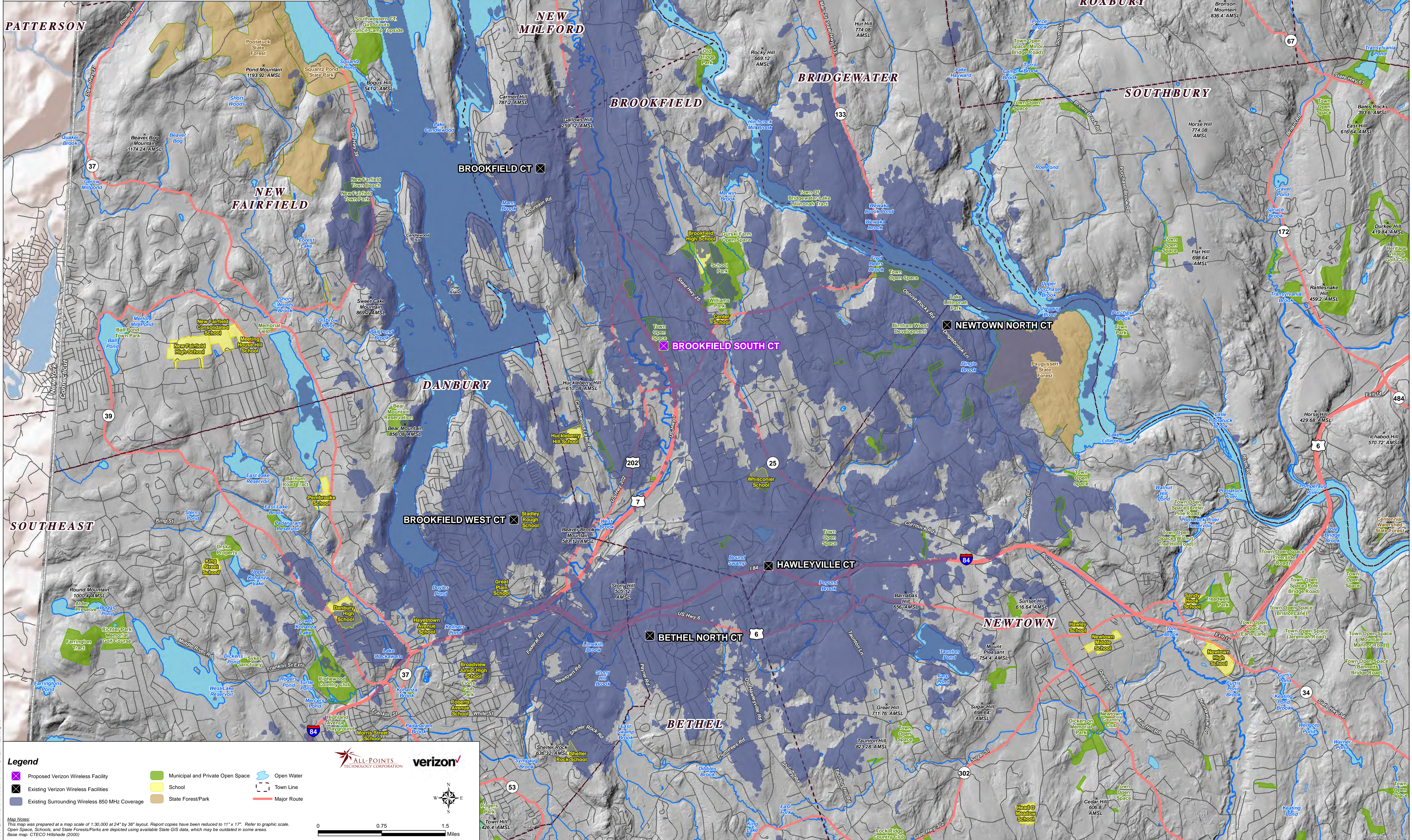
0 0.75 1.5 Miles

ALL-POINTS TECHNOLOGY CORPORATION

verizon

Existing Verizon Wireless 850 MHz Coverage with an Antenna Centerline Height of 146' AGL Brookfield, Connecticut and Surrounding Area (*Map Scale is 1:30,000)

Coverage plot assumes 55% site loading on the Celco system Coverage is depicted at a signal threshold of -85 dBm

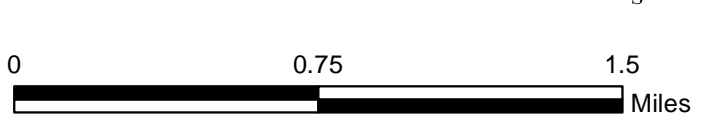


Legend

- ✖ Proposed Verizon Wireless Facility
- ✖ Existing Verizon Wireless Facilities
- Existing Surrounding Wireless 850 MHz Coverage
- Municipal and Private Open Space
- School
- State Forest/Park
- Open Water
- Town Line
- Major Route

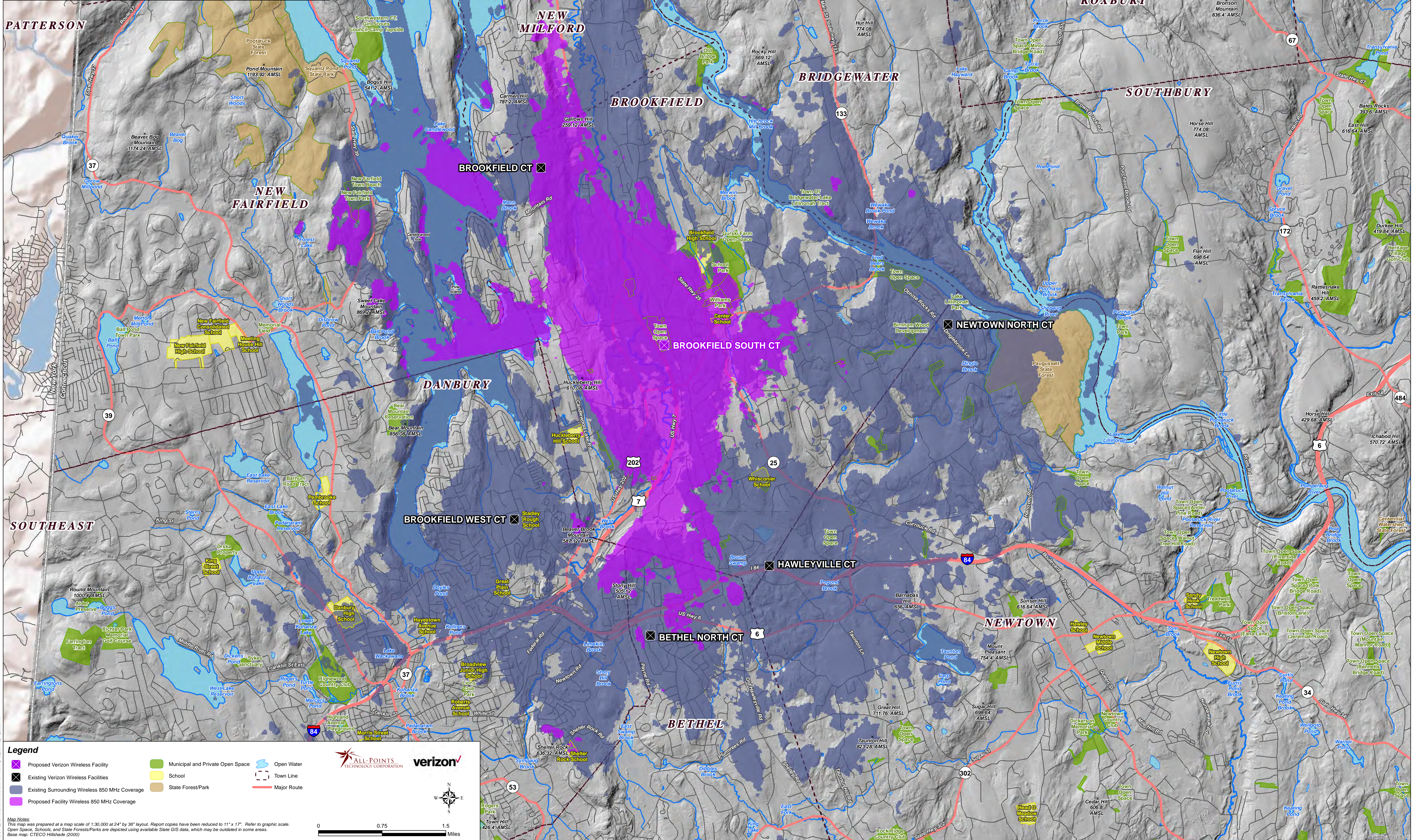


Map Notes:
 This map was prepared at a map scale of 1:30,000 at 24" by 36" layout. Report copies have been reduced to 11" x 17". Refer to graphic scale.
 Open Space, Schools, and State Forests/Parks are depicted using available State GIS data, which may be outdated in some areas.
 Base map: CTECO Hillshade (2000)



Proposed Verizon Wireless 850 MHz Coverage with an Antenna Centerline Height of 146' AGL Brookfield, Connecticut and Surrounding Area (*Map Scale is 1:30,000)

Coverage plot assumes 55% site loading on the Celco system
Coverage is depicted at a signal threshold of -85 dBm



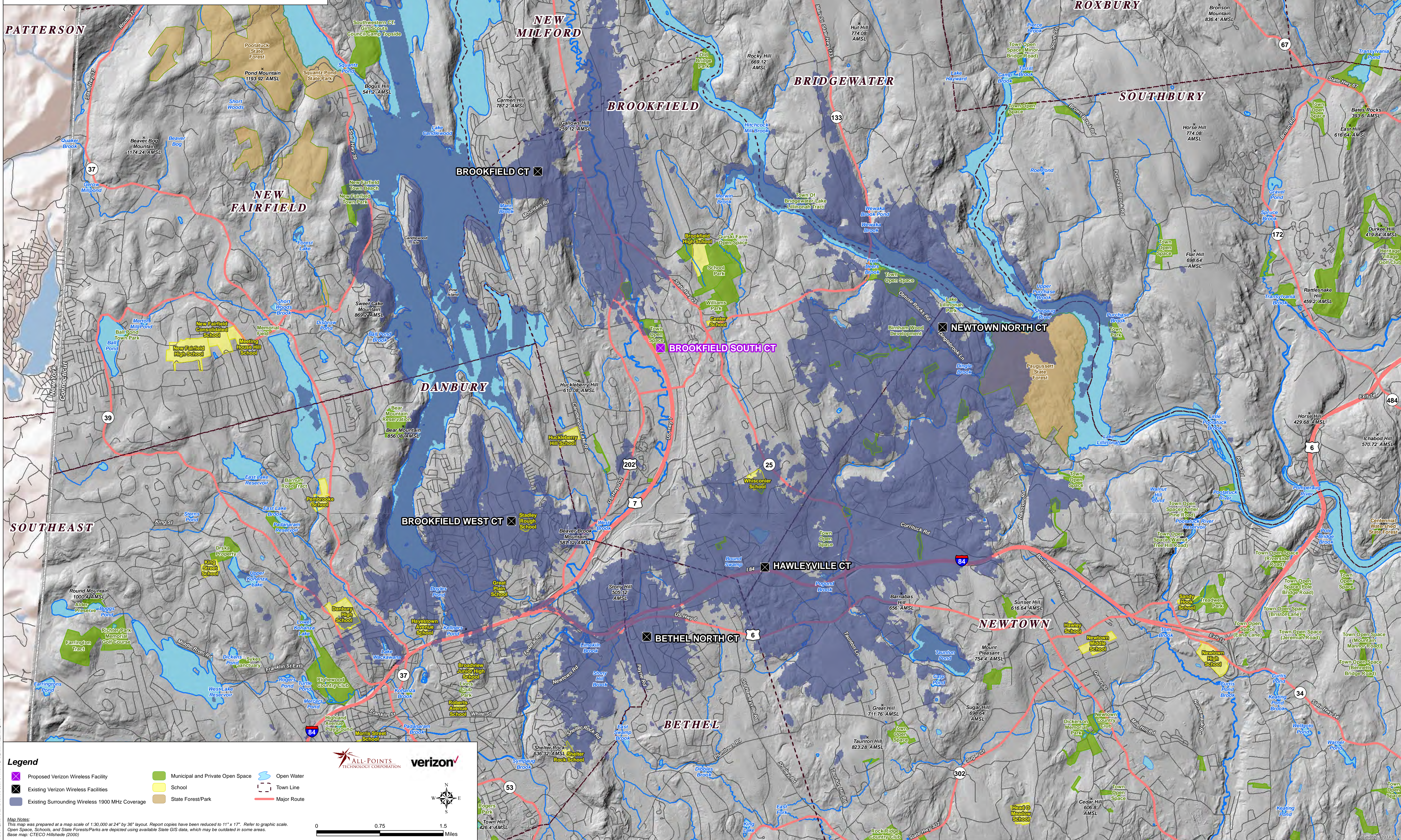
Legend

- Proposed Verizon Wireless Facility
- Municipal and Private Open Space
- Open Water
- Existing Verizon Wireless Facilities
- School
- State Forest/Park
- Existing Surrounding Wireless 850 MHz Coverage
- Town Line
- Major Route
- Proposed Facility Wireless 850 MHz Coverage

Map Notes:
This map was prepared at a map scale of 1:30,000 at 24" by 36" layout. Report copies have been reduced to 11" x 17". Refer to graphic scale.
Open Space, Schools, and State Forests/Parks are depicted using available State GIS data, which may be outdated in some areas.
Base map: CTECO Hillshade (2000)

**Existing Verizon Wireless 1900 MHz Coverage
with an Antenna Centerline Height of 146' AGL
Brookfield, Connecticut and Surrounding Area
(*Map Scale is 1:30,000)**

Coverage plot assumes 55% site loading on the Cellco system
Coverage is depicted at a signal threshold of -85 dBm

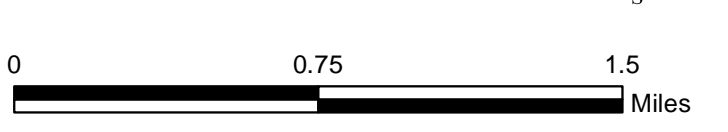


Legend

- ✖ Proposed Verizon Wireless Facility
- ✖ Existing Verizon Wireless Facilities
- Existing Surrounding Wireless 1900 MHz Coverage
- Municipal and Private Open Space
- School
- State Forest/Park
- Open Water
- Town Line
- Major Route

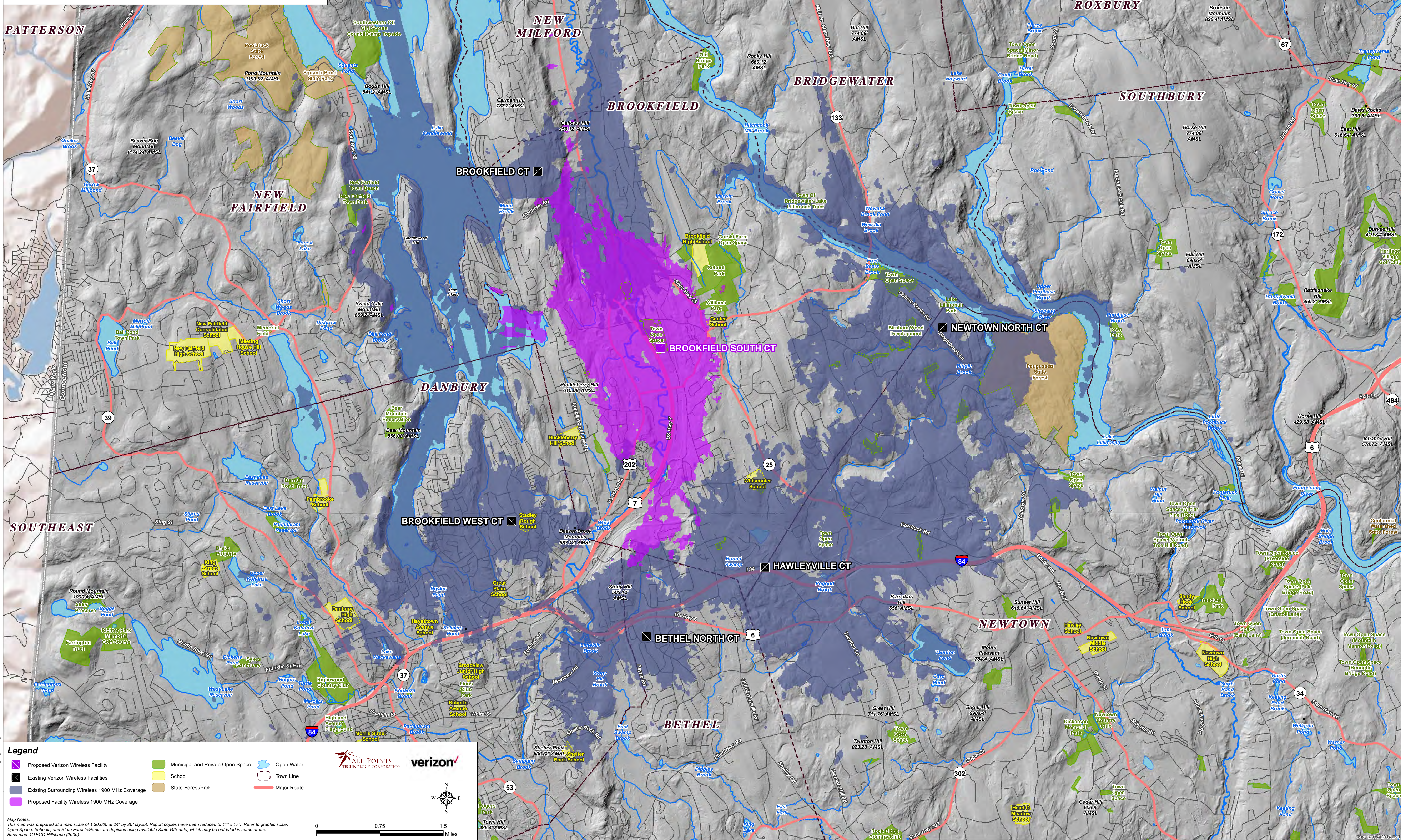


Map Notes:
This map was prepared at a map scale of 1:30,000 at 24" by 36" layout. Report copies have been reduced to 11" x 17". Refer to graphic scale.
Open Spaces, Schools, and State Forests/Parks are depicted using available State GIS data, which may be outdated in some areas.
Base map: CTECO Hillshade (2000)



Proposed Verizon Wireless 1900 MHz Coverage with an Antenna Centerline Height of 146' AGL Brookfield, Connecticut and Surrounding Area (*Map Scale is 1:30,000)

Coverage plot assumes 55% site loading on the Cellco system Coverage is depicted at a signal threshold of -85 dBm



Legend

- Proposed Verizon Wireless Facility
- Municipal and Private Open Space
- Open Water
- Existing Verizon Wireless Facilities
- School
- Town Line
- Existing Surrounding Wireless 1900 MHz Coverage
- State Forest/Park
- Major Route
- Proposed Facility Wireless 1900 MHz Coverage

Map Notes:
 This map was prepared at a map scale of 1:30,000 at 24" by 36" layout. Report copies have been reduced to 11" x 17". Refer to graphic scale.
 Open Space, Schools, and State Forests/Parks are depicted using available State GIS data, which may be outdated in some areas.
 Base map: CTECO Hillshade (2000)

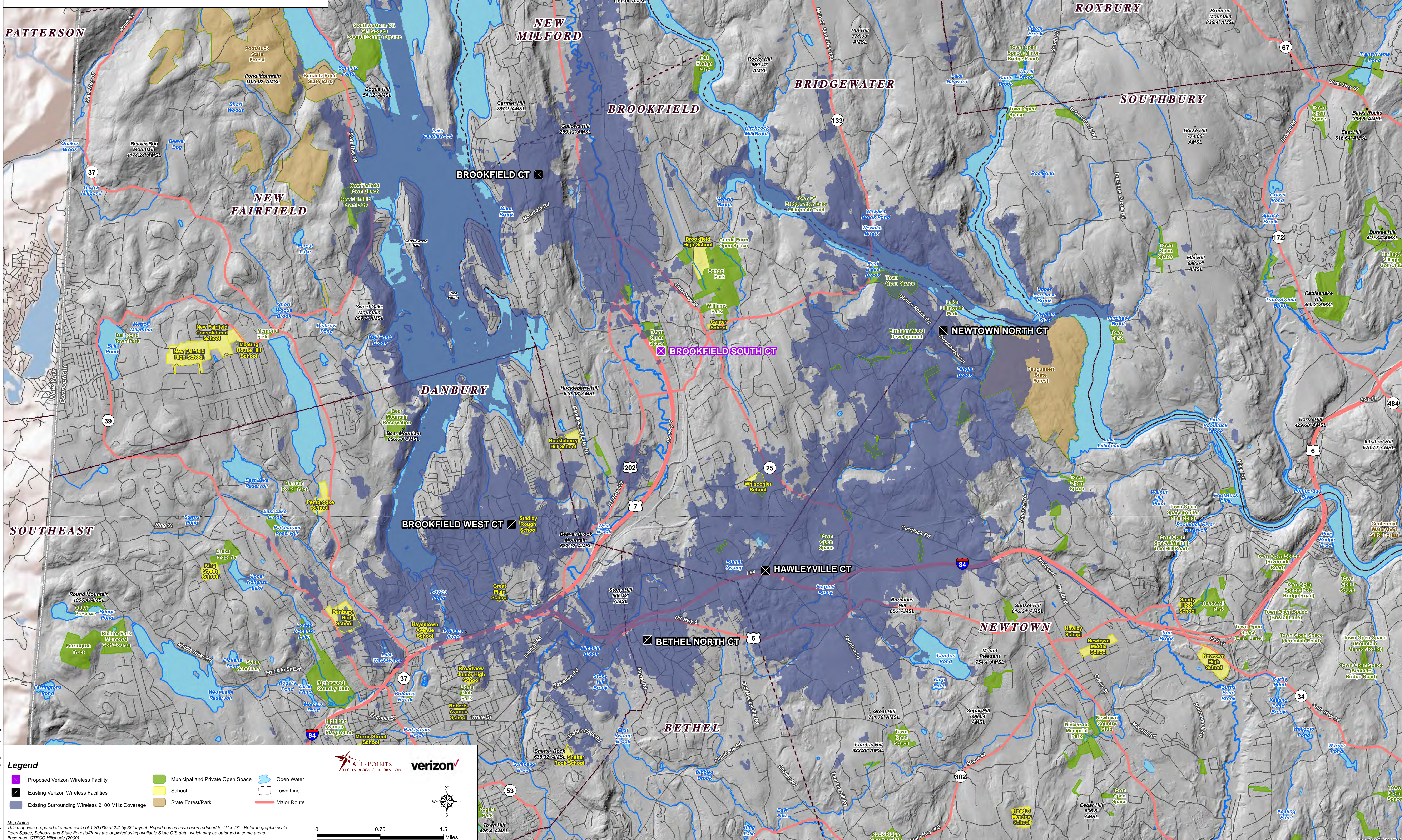
ALL-POINTS TECHNOLOGY CORPORATION

verizon

Copyright © 2014 Verizon Wireless

**Existing Verizon Wireless 2100 MHz Coverage
with an Antenna Centerline Height of 146' AGL
Brookfield, Connecticut and Surrounding Area
(*Map Scale is 1:30,000)**

Coverage is depicted at a signal threshold of 120 dB Operational Path Loss



Legend

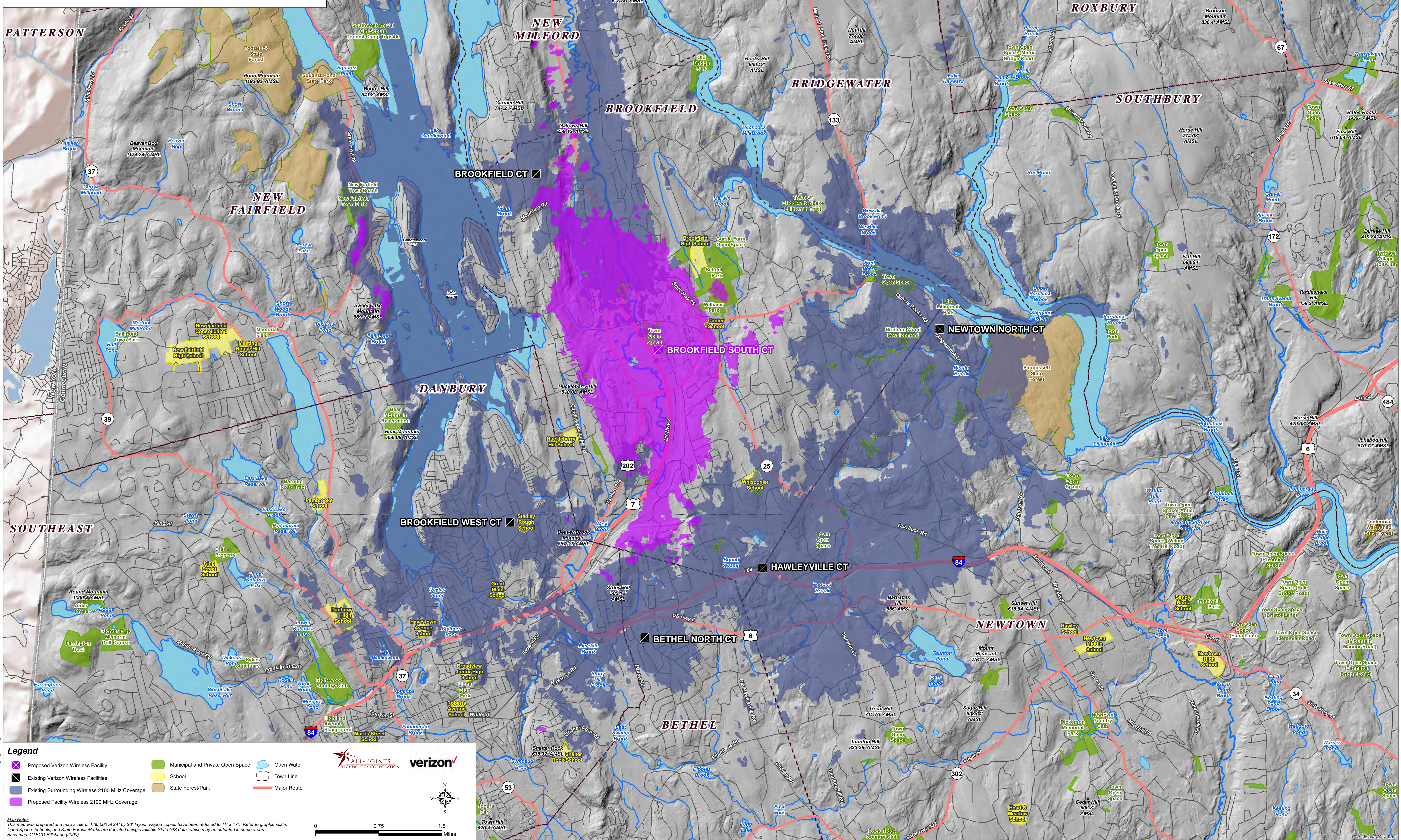
- Proposed Verizon Wireless Facility
- Municipal and Private Open Space
- Open Water
- Existing Verizon Wireless Facilities
- School
- Town Line
- Existing Surrounding Wireless 2100 MHz Coverage
- State Forest/Park
- Major Route

Map Notes:
This map was prepared at a map scale of 1:30,000 at 24" by 36" layout. Report copies have been reduced to 11" x 17". Refer to graphic scale.
Open Space, Schools, and State Forests/Parks are depicted using available State GIS data, which may be outdated in some areas.
Base map: CTECO Hillshade (2000)

0 0.75 1.5 Miles

Proposed Verizon Wireless 2100 MHz Coverage with an Antenna Centerline Height of 146' AGL Brookfield, Connecticut and Surrounding Area
 (*Map Scale is 1:30,000)

Coverage is depicted at a signal threshold of 120 dB Operational Path Loss



Legend

- Proposed Verizon Wireless Facility
- Municipal and Private Open Space
- Open Water
- Existing Verizon Wireless Facilities
- School
- Town Line
- Existing Surrounding Wireless 2100 MHz Coverage
- State Forest/Park
- Major Route
- Proposed Facility Wireless 2100 MHz Coverage

Map Notes:
 This map was prepared at a map scale of 1:30,000 at 24" by 36" layout. Report copies have been reduced to 11" x 17". Refer to graphic scale.
 Open Space, Schools, and State Forests/Parks are depicted using available State GIS data, which may be outdated in some areas.
 Base map: CTECO Hillshade (2000)

ALL-POINTS TECHNOLOGY CORPORATION

verizon

Copyright © 2014 Verizon Wireless. All rights reserved.