



Wannalancit Mills
650 Suffolk Street
Lowell, MA 01854

978.970.5600 PHONE
978.453.1995 FAX

www.TRCSolutions.com

February 2, 2017

Mr. Robert Stein, Chairman
Connecticut Siting Council
Ten Franklin Square
New Britain, CT 06051

**Subject: Docket No. 466, Frost Bridge to Campville 115-kV Project
Decision and Order Condition #4 – Independent Environmental Inspector Report**

Dear Mr. Stein,

Please find enclosed the biweekly Independent Environmental Inspector Report, Report #3, for the **Januaryth** and **January 26th 2017**, inspection events for the construction of the Eversource Frost Bridge to Campville 115-kV Project.

If you have any questions, please contact me at kobrion@trcsolutions.com or (508) 298-1009.

Sincerely,

Kevin M. O'Brion
Environmental Scientist/Project Manager
TRC Environmental Corp.

Enclosure

cc- Kathleen Shanley (email), Eversource
TRC Files
Paul Cyr-TRC

Docket No. 466- Development and Management Plan Inspection

The Connecticut Siting Council (CSC) issued to the Connecticut Light and Power Company (d.b.a. as Eversource Energy [Eversource]) a Certificate of Environmental Compatibility and Public Need (Certificate) for the Frost Bridge to Campville 115-kV Project (Project). For the Project, Eversource is in the process of constructing a new 10.4-mile, primarily overhead electric transmission line between its Frost Bridge Substation in the Town of Watertown and its Campville Substation in the Town of Harwinton, and also is making minor related modifications to both substations and to a 0.4-mile segment of two existing 115-kV lines (the 1191 and 1921 lines) at the Naugatuck River crossing in the towns of Litchfield and Harwinton. These electrical system modifications are located within Eversource's existing right-of-way (ROW) or substation properties in Litchfield County Connecticut. Pursuant to the CSC's approval of the Project, this report presents the results of the bi-weekly inspections of the Project's conformance to the CSC-approved Development & Management (D&M) Plans, performed by the CSC's independent environmental inspector pursuant to Certificate Condition 4.

ROW/SUBSTATIONS
Interim Week Inspection:

Date:01/19/2017

Inspector: Paul Cyr

Rain Event: 1/18/17, 0.5" (site rain gauge)

Locations Inspected (by Town, D&M Plan Map Sheet, and Structure Number/Site :

- Harwinton, Map 34, Str94 through Str88.
- Harwinton, Map 34, Str92.
- Harwinton, Map 33 & 34, Str90 and Str91.
- Harwinton, Map 33, Str90.
- Harwinton, Map 32 & 33, Str88.
- Thomaston, Map 20A & 21, Access road construction spanning watercourse (Morton Pond at the Robert K & Jean R Morton parcel, # 41033).
- Thomaston, Map 19 & 20, Str52 through Str57.
- Litchfield, Map 30, Str85.
- Litchfield, Map 31, Str86, Str3171, Str3236.
- Harwinton, Map 35, Campville Substation.

Work Observed: (by D&M Plan Map Sheet and Structure Number/Site)

Thomaston, Map 20A & 21, access road construction, Northern was in the process of placing timber mats spanning the watercourse at the north end of Morton Pond and removing a wood shed at the request of the land owner(as per agreement with Eversource).

Litchfield, Map 31 & 31A, construction continued on the access road to Str86, Str3171, and Str3236. Northern was placing stone over filter fabric in the areas of the access road that were finish graded, and clearing and rough grading the remaining access road using an excavator.

ROW/SUBSTATIONS
Bi-Weekly Week Inspection:

Date:01/26/2017

Inspector: Paul Cyr

Rain Event: 1/19-1/26, 0.15 Total precip. (NOAA)

Locations Inspected (by Town, D&M Plan Map Sheet, and Structure Number/Site:

- Harwinton, map 35, Campville Substation Expansion, Mechanical Clearing to Str97, Str96
- Harwinton, Map 32, Culvert Crossing, Access Road, Str87, Str3235, Str3174
- Thomaston, Map 19, Access Road construction, Mechanical Clearing to Str52, Hand clearing W-D4/VPD4-1
- Thomaston, Map 20A & Map 21, Morton Property Timber Mat Crossing
- Litchfield, Map 31 & Map 31A, Access Road and Pad prep at Str86, Str3171, Str3236
- Watertown, Map 9A through Map 16, Mechanical Clearing and Pad Prep

Work Observed: (by D&M Plan Map Sheet and Structure Number/Site)

Harwinton, Map 32, the timber mats at S-F10 were being moved 10-feet to the west and the access road reestablished.

Litchfield, Map 31 & 31A, construction continued on the access road to Str86, Str3171, and Str3236. Northern was preparing to blast rock at the lower edge of the access road to Str3171.

Litchfield, Map 30, Access Road construction (stone apron/tracking pad in place) to Str85.

Areas of Inspection	Observation:	Recommended Action/s:	Corrected Action/s:	
Access Roads and Adjacent Roadways	Interim Week	In all areas inspected, stone appeared clean and no excessive buildup of sediments was observed. Local and state roads impacted by project vehicle traffic were maintained, and cleaned of tracked sediments.	Continue to monitor and maintain as necessary. Sweep roadway regularly and continue to remove sediment accumulation from entrance/exit areas and refresh stone surfaces by grading to prevent sediment tracking off site.	N/A
	Bi-Week	Access road had become rutted, loose, and in some cases muddy by the late afternoon due to 50-degree temperatures and direct sunlight in the area. Some access roads had visible surface water flow and standing water (puddles), see attached photos.	Place E&S controls to prevent impacts to surrounding area (roadside) and off site tracking of sediments, and/or suspend activities in the areas where access roads are not stone covered or where sensitive areas will be directly impacted by degrading conditions.	Stopped work in areas most effected, placed hay bales and other E&S controls to stop or prevent further impacts to surrounding areas, and took corrective actions to resolve impacts that occurred do to the degrading conditions caused by the above freezing temperatures. See photo logs.
Vegetative Clearing Limits (Including trees to save or danger trees noted.	Interim Week	Mechanical clearing was not observed at the time of this visit. Areas that were inspected were cleared previously. Areas were clearly flagged and no excessive or out of bounds clearing was noted. Specific trees located within W-D4/VP-D4-1 were marked (with paint) for removal. Additional precautions were taken to ensure restricted access. A continous length of Caution flagging was placed in addition to red flagging to emphasize the established visible boundry.	N/A	N/A
	Bi-Week	No clearing was observed at the time of this visit. Areas that were inspected were cleared previously. Areas were clearly flagged and no excessive or out of bounds clearing was noted. Hand clearing in wetland areas has started. No excessive disturbance was observed.	Continue to update wetland and vernal pool delineation flagging and discuss BMP's with clearing crews prior to initiating clearing work in these areas (Tailboard discussions).	N/A

	Interim Week	<p>Timber mats were being placed as structural support over the existing culvert and watercourse at the north end of Morton Pond in Thomaston (Map 21). Further inspection will occur on 1/26/17 after placement has been completed.</p>	N/A	N/A
Water Crossings	Bi-Week	<p>Timber mats previously placed (12/15/16 report) at the proposed culvert replacment (Detail Sheet 10, Map Sheet 32), were in the process of being moved approximately 10-feet to the west and reestablishing the water crossing and access road to Str87, Str3235, and Str3174.</p> <p>Timber mats placed on 1/5/17 at Morton Pond (Map Sheet 20A) were in need of cleaning and the ground surfaces at each end of the mats (east and west) are in need of stabilization and E&S controls to prevent excessive tracking of sediments and to divert surface water runoff from directly flowing into Morton pond or the spillway.</p>	<p>Continue to clear accumulated sediments from surface of timber mats to prevent impacts to S-F10 (intermittent watercourse).</p> <p>Clean Timber mats and stabilize surrounding grade to prevent tracking of sediments. Install E&S controls to control surface water runoff.</p>	<p style="text-align: center;">N/A</p> <p>Hay bales were placed at locations upgradient of Morton pond to control surface water flow down the access road to the drainage area that meanders into the pond, See attached photos and Map Sheet.</p>

Erosion and Sedimentation Controls	Interim Week	Hydroseeding was completed at the Campville Substation, expansion area. Embankment failure (minor slipout) was observed in the northeast corner of the expansion area and standing water was observed in swale along the south edge of the substation.	Replace embankment material, compact, and reapply hydroseed. Knock down high points within the swale to allow proper drainage and flow.	N/A
	Bi-Week	Due to above freezing conditions the frost and snow cover melted and the resulting conditions required immediate placement of E&S controls to control runoff and stabilize areas.	N/A	Work activities stopped in most areas and E&S controls were implemented. See attached photos and Map Sheets.
Inland Wetland & Watercourse encroachment & mitigation	Interim Week	At the time of this Site inspection the Wetland Invasive Species Control Plan approval was still pending. No physical work is occurring within wetland and watercourse areas.	Wetland Invasive Species Control Plan approval is expected this week and work is scheduled to commence.	Wetland Invasive Species Control Plan, has been approved as of 1/20/17.

<p style="text-align: center;">Inland Wetland and Watercourse encroachment and mitigation (Continued from previous page)</p>	<p>Bi-Week</p>	<p>Surface water runoff from the Campville Substation drainage was observed flowing down gradient into W-G1(Map Sheet 35). Correctivte actions were already taken. Hay bales were placed to slow the flow of surfrace water runoff and straw was placed over the northwest edge of W-G1 to help stabilize the area.</p>	<p>Continue to monitor and impliment additional E&S controls if neccessary.</p>	<p>Continuing to monitor conditions.</p>
	<p style="text-align: center;">Spills and Material Storage</p>	<p>Interim-Week</p>	<p>None observed</p>	<p>N/A</p>
<p>Bi-Week</p>		<p>Campville Substation a sheen was observed on the access road south of the substation. The sheen was contained to the dirt/gravel road and no impacts were seen on the surrounding grades. There was a slight petroleum (diesel) odor in the area of the release. See attached photos.</p>	<p>Utilize spill pads or absorbent material to contain and capture release. Report release as required.</p>	<p>Spill pads used to recover the release. Spill reported to Eversource and CT DEEP. Spill form completed.</p>

Rare, Threatened, and Endangered Species	Interim Week	None observed/None reported	N/A	N/A
	Bi-Week	None observed/None reported	N/A	N/A

Additional Documentation Comments: Notes for (DATE): 1/26/2017, Corrective Action photos attached, and effected area/s Sheet Maps included, provided by Matt Davison.

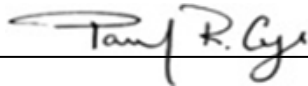
Notes for (DATE):

Open Items from previous inspections:

Closed Items from previous inspections:

Next likely scheduled inspection: 2/2/2017

I have personally examined and am familiar with the information submitted in this document and all attachments and certify that based on reasonable investigation, including my inquiry of those individuals responsible for obtaining the information, the submitted information is true, accurate and complete to the best of my knowledge and belief, and I understand that any false statements made in this document or its attachments may be punishable as a criminal offense in accordance with Section 22a-6 under Section 53a-157 of the Connecticut General Statutes.

Independent Field Inspector: 

Reviewer: 



Photo #1: 1/19/17, Harwinton: Stone apron at access road entrance to Str94-Str88



Photo #2: 1/19/17, Harwinton: Str92 pad, completed



Photo #3 1/19/17, Harwinton: Pull pad between Str92 and Str91 construction:



Photo #4:1/19/17, Harwinton: Str91 pad completed



Photo #5:1/19/17, Harwinton: Str90 pad construction, soil and rock removal



Photo #6:1/19/17, Harwinton: Str90 Pad construction prep



Photo #7: 1/19/17, Harwinton: Timber mat wall surrounding Str90



Photo #8: 1/19/17, Harwinton: Timber mat wall surrounding Str90



Photo #9: 1/19/17, Harwinton: W-F13 southwest corner of Str90 pad



Photo #10: 1/19/17, Harwinton: W-F13 southwest corner of Str90 pad



Photo #11:1/19/17, Thomaston: Timber mat placement at watercourse/Morton Pond



Photo #12:1/19/17, Thomaston: Additional caution tape and trees marked for removal, W-D4/VP-D4-1



Photo #13:1/19/17, Litchfield: Access road to Str86, Str3236, Str3171 construction



Photo #14:1/19/17, Litchfield: Access road to Str86, Str3236, Str3171 construction



Photo #15:1/19/17, Litchfield: Access road to Str86, Str3236, Str3171, plunge pool at entrance/exit off Rt 8N



Photo #16:1/19/17, Litchfield: Access road to Str86, Str3236, Str3171, Rt 8N entrance/exit apron tracking pad



Photo #17:1/19/17, Harwinton: Campville Substation Expansion, hydroseeding embankment



Photo #18:1/19/17, Harwinton: Campville Substation Expansion, drainage swale south side of Substation



Photo #19:1/26/17, Harwinton- Clearing between Str87 and Str88 completed, standing at Pad Str87 facing north toward Str88 in the distance



Photo #20:1/26/17, Harwinton- Str3235 and Str3174 pad construction, standing at Str3235 facing south toward Str86 in the far distance



Photo #21:1/26/17, Harwinton- Timber mat crossing at the proposed culvert replacement (watercourse S-F11, Detail Sheet 10) moving approximately 10-feet to the east



Photo #22:1/26/17, Harwinton- Access road to Str87 at Wildcat Hill Road, stone apron/tracking pad to be constructed



Photo #23:1/26/17, Thomaston- Additional hay bales to be added along the edge of the access road in the area of W-D4/VP D4-1 between Str53 and Str54



Photo #24:1/26/17, Thomaston- Additional hay bales to be added along the edge of the access road in the area of W-D4/VP D4-1 between Str53 and Str54



Photo #25:1/26/17, Thomaston- Robert K. & Jean R. Morton Property(41033, Map 21), access road to Str58-Str60, run off to Morton Pond



Photo #26:1/26/17, Thomaston- Robert K. & Jean R. Morton Property(41033, Map 21), access road to Str58-Str60, run off to Morton Pond



Photo #27:1/26/17, Thomaston- Robert K. & Jean R. Morton Property(41033, Map 21), access road to Str58-Str60, run off to Morton Pond



Photo #28:1/26/17, Thomaston- Robert K. & Jean R. Morton Property(41033, Map 21), access road to Str58-Str60, timber mats



Photo #29:1/26/17, Thomaston- Robert K. & Jean R. Morton Property(41033, Map 21), access road to Str58-Str60, muddy conditions



Photo #30:1/26/17, Thomaston- Robert K. & Jean R. Morton Property(41033, Map 21), access road to Str58-Str60, run off to Morton Pond



Photo #31:1/26/17, Watertown- Access road to Str24 through Str46, timber mats across W-C1 intermittent watercourse



Photo #32:1/26/17, Harwinton- Campville Substation expansion, swale and surface water drainage conditions



Photo #33:1/26/17, Harwinton- Campville Substation expansion, swale and surface water drainage conditions



Photo #34:1/26/17, Harwinton- Access road to Str97, surface water runoff to wetland W-G1



Photo #35:1/26/17, Harwinton- Access road to Str97, surface water runoff to wetlands W-G1



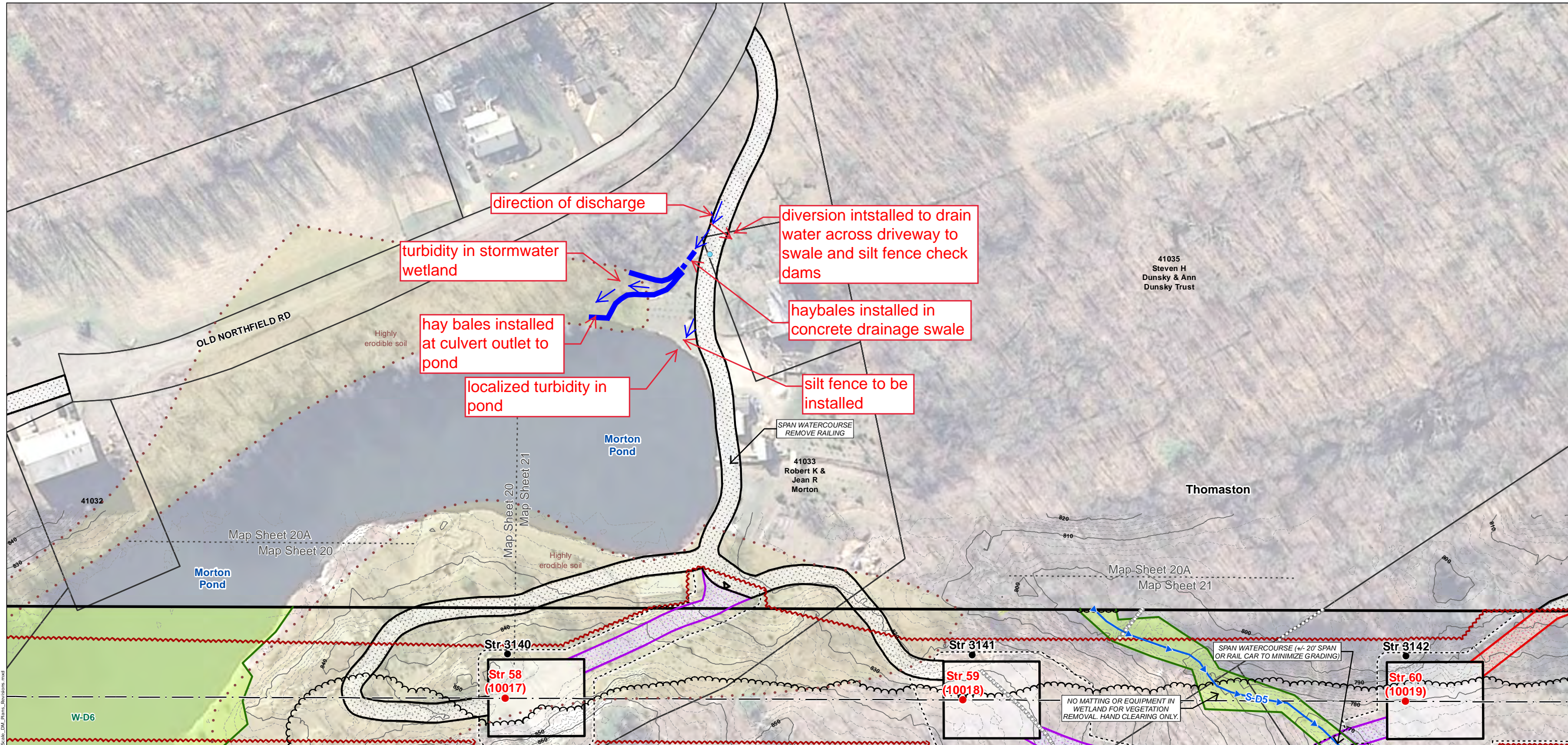
Photo #36:1/26/17, Harwinton- Campville Substation access road, petroleum release to ground



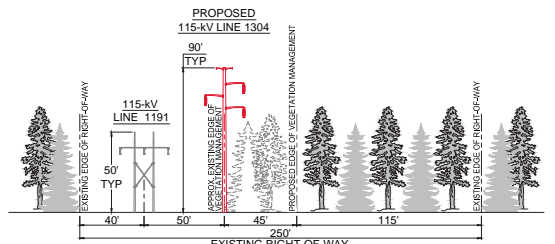
Photo #37:1/26/17, Harwinton- Campville Substation access road, petroleum release to ground



Photo #38:1/26/17, Harwinton- Campville Substation access road, petroleum release to ground



XS-3 VIEW LOOKING NORTH FROM FROST BRIDGE SUBSTATION TOWARDS CAMPVILLE SUBSTATION



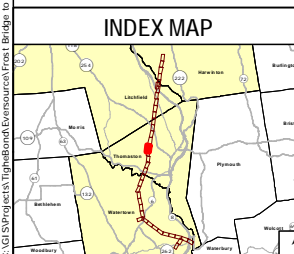
GENERAL NOTES

- PERMIT PLANS ONLY NOT FOR CONSTRUCTION
- THE LIMITS OF DISTURBANCE AS SHOWN DEFINE AREAS WHERE VEGETATION REMOVAL AND GRUBBING, GRADING, AND EXCAVATION MAY OCCUR. MINOR DEVIATIONS MAY BE REQUIRED IN SOME LOCATIONS.
- ALL WORK WILL BE CONDUCTED IN ACCORDANCE WITH THE RELEVANT PORTIONS OF EVERSOURCE'S BMP MANUAL: CONNECTICUT CONSTRUCTION AND MAINTENANCE ENVIRONMENTAL REQUIREMENTS (BMP MANUAL), UNLESS MORE STRINGENT PROJECT-SPECIFIC MEASURES APPLY.
- ALL WORK WILL BE CONDUCTED IN ACCORDANCE WITH THE REQUIREMENTS OF REGULATORY APPROVALS FROM THE U.S. ARMY CORPS OF ENGINEERS AND THE CONNECTICUT DEPARTMENT OF ENERGY AND ENVIRONMENTAL PROTECTION, AND WITH ALL PROJECT PROTOCOLS.
- INSTALL ALL EROSION AND SEDIMENTATION CONTROL MEASURES AS SHOWN ON THE PLANS AND ELSEWHERE AS NECESSARY TO PREVENT SOIL EROSION AND SEDIMENT TRANSPORT, AND COMPLY WITH THE 2002 CONNECTICUT GUIDELINES FOR SOIL EROSION AND SEDIMENT CONTROL. ADDITIONAL CONTROLS, NOT DEPICTED ON THE PLANS, MAY BE NECESSARY FOR COMPLIANCE. IT IS THE RESPONSIBILITY OF THE CONTRACTOR TO ASSESS THE NEED FOR, AND INSTALL ADDITIONAL CONTROLS THAT ARE WARRANTED BY SITE CONDITIONS.
- RETAINING WALLS ARE DEPICTED IN SOME LOCATIONS. RETAINING WALLS MAY BE UTILIZED BY THE CONTRACTOR IN ORDER TO PROVIDE AN ADEQUATELY SIZED WORK PAD WHERE STEEP TOPOGRAPHY EXISTS THEREBY AVOIDING NON-COMPLIANT SLOPES PER THE 2002 CONNECTICUT GUIDELINES. IT IS THE RESPONSIBILITY OF THE CONTRACTOR TO DETERMINE THE NEED FOR, LOCATION OF, MEANS AND METHODS OF CONSTRUCTION, AND SAFETY MEASURES UTILIZED FOR RETAINING WALLS. RETAINING WALLS MAY BE REQUIRED IN ADDITIONAL LOCATIONS NOT DEPICTED ON THE PLANS.
- UPON COMPLETION OF CONSTRUCTION, IT IS THE CONTRACTOR'S RESPONSIBILITY TO REMOVE RETAINING WALLS, REGRADE, AND STABILIZE SLOPES IN COMPLIANCE WITH THE 2002 CONNECTICUT GUIDELINES.
- ALL TEMPORARY ACCESS ROADS IN UPLANDS ARE DEEMED TO BE PERMANENT UNLESS OTHERWISE NOTED
- EXISTING CULVERTS WILL BE PROTECTED AS DEEMED NECESSARY TO PREVENT DAMAGE DURING CONSTRUCTION
- WETLAND INVASIVE SPECIES CONTROL BMPs APPLY TO WORK WITHIN ALL WETLANDS WITH INVASIVE SPECIES. SEE DETAIL SHEET 2
- VERNAL POOL BMPs ARE REQUIRED WITHIN INDICATED AREAS AS DIRECTED BY THE ENVIRONMENTAL INSPECTOR. SEE DETAIL SHEET 3
- RARE SPECIES AVOIDANCE AND MINIMIZATION MEASURES ARE REQUIRED WITHIN INDICATED AREAS. SEE DETAIL SHEET 4
- FARMLAND PROTECTION MEASURES ARE REQUIRED WITHIN INDICATED AREAS. SEE DETAIL SHEET 5

WORK AREA BOUNDARIES IN / NEAR WETLANDS

- VEGETATION REMOVAL WILL OCCUR WITHIN THE VEGETATION REMOVAL LIMITS AS SHOWN, WITH TEMPORARY ACCESS ROUTES IN AND ACROSS WETLANDS AS NECESSARY UNLESS OTHERWISE NOTED. ADDITIONALLY, DANGER OR HAZARD TREE REMOVAL MAY BE REQUIRED OUTSIDE OF THE VEGETATION REMOVAL LIMITS.
- ALL PROJECT CONSTRUCTION ACTIVITIES IN WETLANDS (EXCLUDING VEGETATION REMOVAL) WILL BE CONTAINED WITHIN THE DEPICTED WORK PADS AND ACCESS ROADS.

STR #	DESCRIPTION	HEIGHT (FT)	FINISH	FOUNDATION
58	DELTA TANGENT	102	WEATHERING STEEL	DIRECT EMBEDDED
59	DELTA TANGENT	92.5	WEATHERING STEEL	DIRECT EMBEDDED
60	DELTA TANGENT	102	WEATHERING STEEL	DIRECT EMBEDDED



Legend

- Proposed Structure
- Structure to be Removed
- Existing Structure
- Existing Right-of-Way
- Proposed 115-kV Line (Centerline)
- Existing Transmission Line to be Removed
- 10' Contour Line
- 2' Contour Line
- Railroad
- Stonewall
- Fence
- Gate
- Tree Line
- Vegetation Removal Limits
- Limit of Disturbance
- Designated Recreation Trail
- Trail Points
- Work Pad
- Existing Access Road
- Existing Alternate Access Road
- New Access Road
- New Alternate Access Road
- New Temporary Access Road
- Proposed Substation Expansion
- Culvert (center)
- Intermittent Watercourse
- Perennial Watercourse
- Ordinary High Water Mark
- Wetland Boundary
- Wetland Area
- Connecticut Wetlands Only
- Temporary Wetland Impact
- Permanent Wetland Impact
- Rare Species
- Vernal Pool
- Decoy Vernal Pool
- Highly Erodible Soils
- 100 Year Flood Zone
- Eversource Owned Property
- Parcel Boundary
- Municipal Boundary
- REV 1 D&M Plan Revision Area
- Map Sheet Matchline
- Underground ADSS
- Temporary Structure
- Temporary Guy Anchor

Base Map Source: 2012 Aerial Imagery (CTECO) 0

1 inch = 100 feet

EVERSOURCE ENERGY

Frost Bridge to Campville 115-kV Project Development & Management Plan

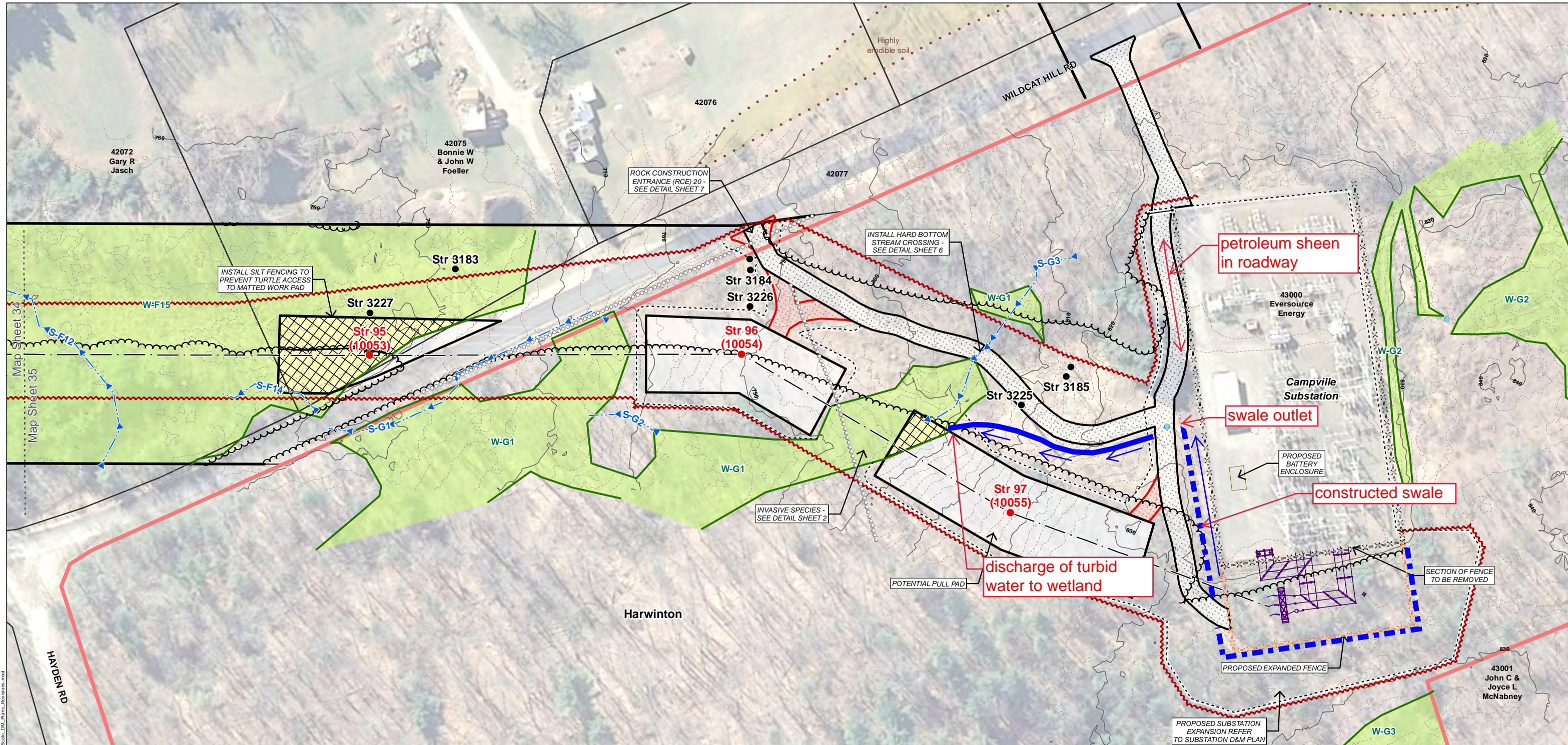
Thomaston, CT | Map Sheet 20A of 35

January 2017 | Map Author: N. Castro

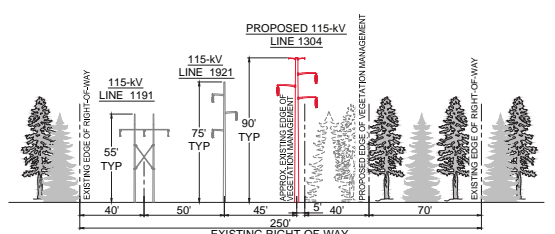
Tighe & Bond | ALL-POINTS TECHNOLOGY CORPORATION

NO.	DATE	REVISIONS	BY	CHK	APP	APP

C:\GIS\Projects\Tighe\Bonn\Development\Frost Bridge to Campville 115-kV Project\Drawings\FrostBridgeCampville_115kV_Plan_Revision.mxd



XS-6 VIEW LOOKING NORTH FROM FROST BRIDGE SUBSTATION TOWARDS CAMPVILLE SUBSTATION



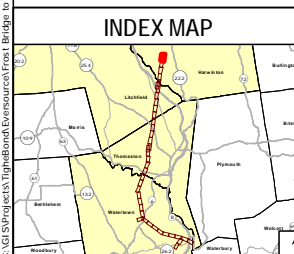
GENERAL NOTES

- PERMIT PLANS ONLY NOT FOR CONSTRUCTION
- THE LIMITS OF DISTURBANCE AS SHOWN DEFINE AREAS WHERE VEGETATION REMOVAL AND GRUBBING, GRADING, AND EXCAVATION MAY OCCUR. MINOR DEVIATIONS MAY BE REQUIRED IN SOME LOCATIONS.
- ALL WORK WILL BE CONDUCTED IN ACCORDANCE WITH THE RELEVANT PORTIONS OF EVERSOURCE'S BMP MANUAL: CONNECTICUT CONSTRUCTION AND MAINTENANCE ENVIRONMENTAL REQUIREMENTS (BMP MANUAL), UNLESS MORE STRINGENT PROJECT-SPECIFIC MEASURES APPLY.
- ALL WORK WILL BE CONDUCTED IN ACCORDANCE WITH THE REQUIREMENTS OF REGULATORY APPROVALS FROM THE U.S. ARMY CORPS OF ENGINEERS AND THE CONNECTICUT DEPARTMENT OF ENERGY AND ENVIRONMENTAL PROTECTION, AND WITH ALL PROJECT PROTOCOLS.
- INSTALL ALL EROSION AND SEDIMENTATION CONTROL MEASURES AS SHOWN ON THE PLANS AND ELSEWHERE AS NECESSARY TO PREVENT SOIL EROSION AND SEDIMENT CONTROL. ADDITIONAL CONTROLS, NOT DEPICTED ON THE PLANS, MAY BE NECESSARY FOR COMPLIANCE. IT IS THE RESPONSIBILITY OF THE CONTRACTOR TO ASSESS THE NEED FOR, AND INSTALL ADDITIONAL CONTROLS THAT ARE WARRANTED BY SITE CONDITIONS.
- RETAINING WALLS ARE DEPICTED IN SOME LOCATIONS. RETAINING WALLS MAY BE UTILIZED BY THE CONTRACTOR IN ORDER TO PROVIDE AN ADEQUATELY SIZED WORK PAD WHERE STEEP TOPOGRAPHY EXISTS THEREBY AVOIDING NON-COMPLIANT SLOPES PER THE 2002 CONNECTICUT GUIDELINES. IT IS THE RESPONSIBILITY OF THE CONTRACTOR TO DETERMINE THE NEED FOR, LOCATION OF, MEANS AND METHODS OF CONSTRUCTION, AND SAFETY MEASURES UTILIZED FOR RETAINING WALLS. RETAINING WALLS MAY BE REQUIRED IN ADDITIONAL LOCATIONS NOT DEPICTED ON THE PLANS.
- UPON COMPLETION OF CONSTRUCTION, IT IS THE CONTRACTOR'S RESPONSIBILITY TO REMOVE RETAINING WALLS, REGRADE, AND STABILIZE SLOPES IN COMPLIANCE WITH THE 2002 CONNECTICUT GUIDELINES.
- ALL TEMPORARY ACCESS ROADS IN UPLANDS ARE DEEMED TO BE PERMANENT UNLESS OTHERWISE NOTED
- EXISTING CULVERTS WILL BE PROTECTED AS DEEMED NECESSARY TO PREVENT DAMAGE DURING CONSTRUCTION
- WETLAND INVASIVE SPECIES CONTROL BMPs APPLY TO WORK WITHIN ALL WETLANDS WITH INVASIVE SPECIES. SEE DETAIL SHEET 2
- VERNAL POOL BMPs ARE REQUIRED WITHIN INDICATED AREAS AS DIRECTED BY THE ENVIRONMENTAL INSPECTOR. SEE DETAIL SHEET 3
- RARE SPECIES AVOIDANCE AND MINIMIZATION MEASURES ARE REQUIRED WITHIN INDICATED AREAS. SEE DETAIL SHEET 4
- FARMLAND PROTECTION MEASURES ARE REQUIRED WITHIN INDICATED AREAS. SEE DETAIL SHEET 5

WORK AREA BOUNDARIES IN / NEAR WETLANDS

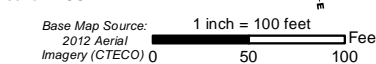
- VEGETATION REMOVAL WILL OCCUR WITHIN THE VEGETATION REMOVAL LIMITS AS SHOWN, WITH TEMPORARY ACCESS ROUTES IN AND ACROSS WETLANDS AS NECESSARY UNLESS OTHERWISE NOTED. ADDITIONALLY, DANGER OR HAZARD TREE REMOVAL MAY BE REQUIRED OUTSIDE OF THE VEGETATION REMOVAL LIMITS.
- ALL PROJECT CONSTRUCTION ACTIVITIES IN WETLANDS (EXCLUDING VEGETATION REMOVAL) WILL BE CONTAINED WITHIN THE DEPICTED WORK PADS AND ACCESS ROADS.

STR #	DESCRIPTION	HEIGHT (FT)	FINISH	FOUNDATION
95	DELTA TANGENT	88.5	WEATHERING STEEL	DIRECT EMBEDDED
96	VERTICAL DEADEND	85	WEATHERING STEEL	DRILLED SHAFT
97	VERTICAL DEADEND	95	WEATHERING STEEL	DRILLED SHAFT



Legend

- Proposed Structure
- Structure to be Removed
- Existing Structure
- Existing Right-of-Way
- Proposed 115-kV Line (Centerline)
- Existing Transmission Line to be Removed
- 10' Contour Line
- 2' Contour Line
- Railroad
- Stonewall
- Fence
- Gate
- Tree Line
- Vegetation Removal Limits
- Limit of Disturbance
- Designated Recreation Trail
- Trail Points
- Work Pad
- Existing Access Road
- Existing Alternate Access Road
- New Access Road
- New Alternate Access Road
- New Temporary Access Road
- Proposed Substation Expansion
- Culvert (center)
- Intermittent Watercourse
- Perennial Watercourse
- Ordinary High Water Mark
- Wetland Boundary
- Wetland Area
- Connecticut Wetlands Only
- Temporary Wetland Impact
- Permanent Wetland Impact
- Rare Species
- Vernal Pool
- Decoy Vernal Pool
- Highly Erodible Soils
- 100 Year Flood Zone
- Eversource Owned Property
- Parcel Boundary
- Municipal Boundary
- REV 1 D&M Plan Revision Area
- Map Sheet Matchline
- Underground ADSS
- Temporary Structure
- Temporary Guy Anchor



NO.	DATE	REVISIONS	BY	CHK	APP	APP

EVERSOURCE ENERGY

Frost Bridge to Campville 115-kV Project Development & Management Plan

Harwinton, CT Map Sheet 35 of 35

January 2017 Map Author: N. Castro

Tighe & Bond **ALL-POINTS TECHNOLOGY CORPORATION**

Project Corrective Actions



Photo #39: Harwinton- Stone apron/tracking pad added to access road at Str96 off Wildcat Hill Road



Photo #40: Thomaston- Morton Property, access road to Str58 and Str59, implementation of E&S controls



Photo #41: Thomaston- Morton Property, access road to Str58 and Str59, implementation of E&S controls



Photo #42: Thomaston- Morton Property- Morton Pond, implementation of E&S controls



Photo #43: Thomaston- Morton Property, access road to Str58 and Str59, implementation of E&S controls