



STATE OF CONNECTICUT

CONNECTICUT SITING COUNCIL

Ten Franklin Square, New Britain, CT 06051

Phone: (860) 827-2935 Fax: (860) 827-2950

E-Mail: siting.council@ct.gov

www.ct.gov/csc

VIA ELECTRONIC MAIL

June 16, 2017

TO: Parties and Intervenors

FROM: Melanie Bachman, Executive Director *MAB*

RE: **DOCKET NO. 461A** - Eversource Energy application for a Certificate of Environmental Compatibility and Public Need for the construction, maintenance, and operation of a 115-kilovolt (kV) bulk substation located at 290 Railroad Avenue, Greenwich, Connecticut, and two 115-kV transmission circuits extending approximately 2.3 miles between the proposed substation and the existing Cos Cob Substation, Greenwich, Connecticut, and related substation improvements. Reopening of this docket based on changed conditions pursuant to Connecticut General Statutes §4-181a(b).

At a pre-hearing conference held on June 14, 2017 in Hearing Room 3, 10 Franklin Square, New Britain, Connecticut, the Connecticut Siting Council (Council) requested that the following format be used for the proceedings on the above-referenced matter including the public field review and public comment session scheduled on July 13, 2017 and the evidentiary hearing scheduled on July 25, 2017. The pre-hearing conference was attended by Anthony M. Fitzgerald, Esq., of Carmody Torrance Sandak & Hennessey LLP, Kathleen Shanley of Eversource Energy, David Dobin, Esq. and David Ball, Esq., of Cohen and Wolf P.C., Frank Baratta and Jude Collins of Morningside Circle Association, Amy Siebert, Greenwich Commissioner of Public Works, and Council staff.

Pre-hearing Procedure

1. On or before July 11, 2017, all parties and intervenors are requested to exchange pre-hearing interrogatories with all other parties and intervenors. Additional interrogatories and pre-filed testimony submission deadlines will be announced as continued evidentiary hearings are scheduled.
2. On or before July 18, 2017, all parties and intervenors are requested to file responses to pre-hearing interrogatories and exchange pre-filed testimony, exhibits, witness lists, and items to be noticed administratively with the Council and all other parties and intervenors. To save the time and expense of parties, intervenors, and the public, all parties and intervenors are encouraged to resolve discrepancies of these items before the hearing.
3. Any person seeking to be admitted as a party or intervenor to the proceeding is requested to file a written petition with the Council on or before July 18, 2017.



CONNECTICUT SITING COUNCIL

Affirmative Action / Equal Opportunity Employer

4. All filings are to be in accordance with the State Solid Waste Management Plan and in accordance with Section 16-50j-12 of the Regulations of Connecticut State Agencies the Council requires an original and 15 copies of all filings. The Council is requesting that all filings be submitted on recyclable paper, primarily regular weight white office paper. Please avoid using heavy stock paper, colored paper, and metal or plastic binders and separators to the extent possible.
5. Pursuant to Section 16-50j-21 of the Regulations of Connecticut State Agencies, at least ten business days prior to the public hearing, the Applicant shall erect and maintain, in a legible condition, five signs not less than six feet by four feet at conspicuous locations along the route and at the substation sites. The signs shall set forth the name of the Applicant, the type of facility, the public hearing date, and contact information for the Council (Web site and phone number). Information pertaining to the location of the signs shall be submitted to the Council prior to sign installation.
6. Enclosed is a list of items the Council wishes to notice administratively. Objections to any item on the list should be sent to the Council before the hearing.

Hearing Procedure

7. A public field review of the site will be held on Thursday, July 13, 2017 beginning at 2:00 p.m. The field review will commence from the Greenwich Library, 101 West Putnam Avenue and will follow the route submitted to and approved by Council staff on June 14, 2017 a copy of which is attached. The submitted route has also been posted to the Council's website on the Docket 461A webpage.
8. The 6:30 p.m. public comment session on July 13, 2017 will be reserved for the public to make brief statements into the record.
9. The Council requests that the applicant conduct a brief presentation prior to public comment, using 24-inch by 36-inch diagrams or other form of presentation that depict project features including a map showing properties abutting each substation. The diagrams or other form of presentation must be from materials already submitted into the record.
10. The Council will provide public officials who have not been granted party or intervenor status an opportunity to make a statement.
11. The 11:00 a.m. July 25, 2017 evidentiary hearing session will provide the applicant, parties, and intervenors an opportunity to introduce exhibits and witnesses, and cross-examine positions. The applicant will be allowed to present its exhibits and witness panel, and then be subject to cross-examination by the Council and all parties and intervenors. All parties and intervenors will then be allowed to introduce their exhibits and witness panels, and be subject to cross-examination by the Council, the applicant and all other parties and intervenors.
12. All participants are requested to place nameplates on the table in front of each witness at the hearing.
13. The order of appearances and cross-examination will be governed by a hearing program developed by the Council for the proceeding. The Council may issue a draft version of the hearing program to parties and intervenors prior to the hearing.

14. The Council may, at its discretion, group parties and intervenors with the same interests. The participant grouping in Docket No. 461 will remain in effect in Docket No. 461A.
15. Individuals will be encouraged to participate through their elected officials and other party or intervenor groupings.
16. Pursuant to Section 16-50j-15b of the Regulations of Connecticut State Agencies, any party or intervenor, including those that are members of non-profit corporations or citizens groups, that have attained party or intervenor status in the proceeding are deemed to be represented in the proceeding and may not submit oral or written statements into the record.
17. All participants will be encouraged to be brief, concise, non-repetitious, and courteous of all other participants. Public statements will be limited to 3 minutes in fairness to everyone that wishes to speak.

Post-hearing procedure

18. A verbatim transcript of the hearing session will be made and deposited with the Greenwich Town Clerk's Office for the convenience of the public.
19. Parties and intervenors will be allowed to submit briefs and proposed findings of fact within 30 days after the close of the final evidentiary hearing.
20. Members of the public will be allowed to submit public statements into the record within 30 days after the close of the final evidentiary hearing.
21. Deadlines for briefs, proposed findings of fact, and public statements will be final and no extensions will be granted.

Thank you for your cooperation.

Enclosure: Administrative Notice List
Field Review Route/Map

MB/RDM/laf



STATE OF CONNECTICUT

CONNECTICUT SITING COUNCIL

Ten Franklin Square, New Britain, CT 06051

Phone: (860) 827-2935 Fax: (860) 827-2950

E-Mail: siting.council@ct.gov

www.ct.gov/csc

Administrative Notice List

Docket No. 461A

FEDERAL

1. NATIONAL INSTITUTE OF ENVIRONMENTAL HEALTH SCIENCES, NATIONAL INSTITUTES OF HEALTH, *EMF, Electric and Magnetic Fields Associated with the Use of Electric Power*, June 2002, available at http://www.niehs.nih.gov/health/assets/docs_p_z/results_of_emf_research_emf_questions_answers_booklet.pdf
2. NATIONAL RESEARCH COUNCIL, *Research on Power-Frequency Fields Completed Under the Energy Policy Act of 1992*, National Academy of Sciences, 1999, available at <http://books.nap.edu/openbook.php?isbn=0309065437>
3. Proclamation No. 8460 - Critical Infrastructure Protection Month, 2009, 74 Fed. Reg. 234, December 8, 2009, available at <http://www.presidency.ucsb.edu/ws/index.php?pid=86954>
4. Presidential Executive Order No. 13636, Improving Critical Infrastructure Cybersecurity, 78 FED. REG. 11739, February 19, 2013, available at <http://www.archives.gov/federal-register/executive-orders/2013.html>
5. UNITED STATES DEPARTMENT OF THE INTERIOR, NATIONAL PARK SERVICE, *National Register of Historic Places*, September 2014, available at <http://www.nps.gov/history/nr/research/index.htm>
6. FEDERAL AVIATION ADMINISTRATION, UNITED STATES DEPARTMENT OF TRANSPORTATION, OBSTRUCTION MARKING AND LIGHTING, ADVISORY CIRCULAR AC70/7460-1K (February 2007), available at https://oeaaa.faa.gov/oeaaa/external/content/AC70_7460_1K.pdf
7. UNITED STATES DEPARTMENT OF ENERGY, FEDERAL ENERGY REGULATORY COMMISSION AND THE NORTH AMERICAN ELECTRIC AND RELIABILITY CORPORATION, *Report on Transmission Facility Outages During the Northeast Snowstorm of October 29-30, 2011 – Causes and Recommendations*, May 31, 2012, available at <http://ferc.gov/legal/staff-reports/05-31-2012-ne-outage-report.pdf>
8. NORTH AMERICAN ELECTRIC RELIABILITY CORPORATION, Critical Infrastructure Protection, CIP-014-1, Physical Security Standards, May 1, 2014, available at <http://www.nerc.com/pa/Stand/Reliability%20Standards/CIP-014-1.pdf>
9. UNITED STATES DEPARTMENT OF ENERGY, FEDERAL ENERGY REGULATORY COMMISSION, *Guidelines for the Protection of Natural, Historic, Scenic and Recreational Values in the Design and Location of Rights-of-Way and Transmission Facilities*, November 27, 1970.
10. UNITED STATES QUADRENNIAL ENERGY REVIEW TASK FORCE, *Quadrennial Energy Review: Energy Transmission, Storage, and Distribution Infrastructure*, April 2015, available at <http://energy.gov/epsa/downloads/quadrennial-energy-review-full-report>
11. UNITED STATES QUADRENNIAL ENERGY REVIEW TASK FORCE, *Quadrennial Energy Review Second Installment: Transforming the Nation's Electricity System*, January 2017, available at <https://energy.gov/epsa/downloads/quadrennial-energy-review-second-installment>



CONNECTICUT SITING COUNCIL

Affirmative Action / Equal Opportunity Employer

12. U.S. FISH AND WILDLIFE SERVICE, Final 4(d) Rule for the Northern Long-eared Bat, January 14, 2016, *available at* <https://www.fws.gov/Midwest/endangered/mammals/nleb/pdf/FRnlebFinal4dRule14Jan2016.pdf>
13. UNITED STATES ENERGY INFORMATION ADMINISTRATION, *Annual Energy Outlook 2016*, August 2016, *available at* [http://www.eia.gov/forecasts/aeo/pdf/0383\(2016\).pdf](http://www.eia.gov/forecasts/aeo/pdf/0383(2016).pdf)

REGIONAL

14. ISO-NEW ENGLAND, INC., *Power Generation and Fuel Diversity in New England*, August 25, 2005, *available at* http://www.iso-ne.com/pubs/whtpprs/iso_ne_paper.pdf
15. ISO-NEW ENGLAND, INC., *Electricity Costs White Paper*, June 1, 2006, *available at* http://www.iso-ne.com/pubs/whtpprs/elec_costs_wht_ppr.pdf
16. ISO NEW ENGLAND, *2014 Regional System Plan*, November 6, 2014, *available at* <http://www.iso-ne.com/system-planning/system-plans-studies/rsp>
17. ISO-NEW ENGLAND, INC., *2015 Regional System Plan*, November 5, 2015, <http://www.iso-ne.com/system-planning/system-plans-studies/rsp>
18. ISO-NEW ENGLAND, INC., *2016-2025 Forecast Report of Capacity, Energy, Loads & Transmission (CELT)*, May 2, 2016, *available at* <https://www.iso-ne.com/system-planning/system-plans-studies/celt>
19. ISO-NEW ENGLAND, INC., *2017-2026 Forecast Report of Capacity, Energy, Loads & Transmission (CELT)*, May 1, 2017, *available at* <https://www.iso-ne.com/system-planning/system-plans-studies/celt>
20. ISO-NEW ENGLAND, INC., *2016 Regional Electricity Outlook*, January 2016, *available at* https://www.iso-ne.com/static-assets/documents/2016/03/2016_reo.pdf
21. ISO-NEW ENGLAND, INC., *2017 Regional Electricity Outlook*, January 2017, *available at* https://www.iso-ne.com/static-assets/documents/2017/02/2017_reo.pdf
22. ISO-NEW ENGLAND, INC., ISO-NE, Inc. *Transmission, Markets and Services Tariff*, March 1, 2017, *available at* <https://www.iso-ne.com/participate/rules-procedures/tariff>
23. ISO-NEW ENGLAND, INC.. ISO-NE Planning Procedure No. 4, Procedure for Pool-Supported PTF Cost Review, May 6, 2016, *available at* https://www.iso-ne.com/static-assets/documents/rules_proceeds/isone_plan/pp04_0/pp4_0.pdf
24. ISO-NEW ENGLAND, INC., *2017 State of the Grid: 2017*, Presentation by Gordon van Welie, January 30, 2017, *available at* https://www.iso-ne.com/static-assets/documents/2017/01/20170130_stateofgrid2017_presentation_pr.pdf
25. New England Energy Landscape Update, Prepared for the New England Coalition for Affordable Energy, Daymark Energy Advisors, October 3, 2016, *available at* <https://media.gractions.com/5CC7D7975DFE1335100A9E9B056042840005CCF0/3d7036a2-dba3-4773-87a7-5697a425e1fa.pdf>

26. The Economic Impacts of Failing to Build Energy Infrastructure in New England, Prepared for the New England Coalition for Affordable Energy, La Capra Associates, Inc. and Economic Development Research Group, August 25, 2015, *available at* <http://media.gractions.com/5CC7D7975DFE1335100A9E9B056042840005CCF0/25e72b85-c007-4b98-a851-8b31563c9559.pdf>

STATE

Connecticut Siting Council

27. CONNECTICUT SITING COUNCIL, *Electric and Magnetic Field Best Management Practices for the Construction of Electric Transmission Lines in Connecticut*, December 14, 2007, revised February 20, 2014, *available at* <http://www.ct.gov/csc/emf-bmp>
28. CONNECTICUT SITING COUNCIL, *2014/2015 Forecast of Electric Loads and Resources*, December 10, 2015, *available at* http://www.ct.gov/csc/lib/csc/pendingproceeds/forecast_2014_2015/f-2015_finalreport.pdf
29. CONNECTICUT SITING COUNCIL, *White Paper on the Security of Siting Energy Facilities*, October 8, 2009, *available at* http://www.ct.gov/csc/lib/csc/docket_346/whiteppr_final.pdf
30. CONNECTICUT SITING COUNCIL, *Investigation into the Life Cycle Costs of Electric Transmission Lines*, November 15, 2012, *available at* http://www.ct.gov/csc/lib/csc/lifecycle2011/life_cycle_final_report.pdf
31. Letter from Robert Carberry, Project Manager, NEEWS Siting and Permitting, Connecticut Light & Power Company to Melanie Bachman, Acting Executive Director, Connecticut Siting Council regarding underground reconstruction of distribution line segments at transmission line road crossings, dated May 17, 2013.
32. CONNECTICUT SITING COUNCIL, PETITION NO. 36 - The Connecticut Light and Power Company declaratory ruling for construction of a double circuit 115-kV line at the Mianus River, in Greenwich. Record.
33. CONNECTICUT SITING COUNCIL, PETITION NO. 237 - The Connecticut Light and Power Company petition that General Statute 16-50z does not apply to electric substations. Record.
34. CONNECTICUT SITING COUNCIL, PETITION NO. 268 - The Connecticut Light and Power Company declaratory ruling for a proposed addition to the Tomac Substation and an associated modification to a 115-kV transmission line, in Greenwich. Record.
35. CONNECTICUT SITING COUNCIL, PETITION NO. 488 - Connecticut Light and Power Company declaratory ruling that no Certificate of Environmental Compatibility and Public Need is required for modifications to an existing electric substation facility (Cos Cob Substation) located off Sound Shore Drive, Greenwich, Connecticut. Record
36. CONNECTICUT SITING COUNCIL, PETITION NO. 692 - Connecticut Light & Power Company declaratory ruling that no Certificate of Environmental Compatibility and Public Need is required for the proposed installation of a circuit breaker and associated equipment at Cos Cob Metro-North Railroad 35K Substation in Greenwich, Connecticut. Record.

37. CONNECTICUT SITING COUNCIL, PETITION NO. 812 - Connecticut Jet Power LLC declaratory ruling that no Certificate of Environmental Compatibility and Public Need is required for the proposed construction, maintenance, and operation of two 20 MW peaking units located at the Cos Cob facility, Sound Shore Drive, Greenwich, Connecticut. Record.
38. CONNECTICUT SITING COUNCIL, PETITION NO. 950 - The Connecticut Light and Power Company (CL&P) declaratory ruling that no Certificate of Environmental Compatibility and Public Need is required for the proposed modifications to the existing CL&P Cos Cob substation, located at Sound Shore Drive, Greenwich, Connecticut. Record.
39. CONNECTICUT SITING COUNCIL, DOCKET NO. 208 - Cross-Sound Cable Company, LLC Certificate of Environmental Compatibility and Public Need for the construction, operation, and maintenance of a high-voltage direct current (HVDC) submarine electric transmission and fiber optic cable system from One Waterfront Street, New Haven, Connecticut to Brookhaven, New York. Record.
40. CONNECTICUT SITING COUNCIL, DOCKET NO. 217 - Northeast Utilities Service Company application for a Certificate of Environmental Compatibility and Public Need for the construction of a 345-kV electric transmission line and reconstruction of an existing 115-kV electric transmission line between Connecticut Light and Power Company's Plumtree Substation in Bethel, through the Towns of Redding, Weston, and Wilton, and to Norwalk Substation in Norwalk, Connecticut. Record.
41. CONNECTICUT SITING COUNCIL, DOCKET NO. 304 - The Connecticut Light and Power Company submission of a Statement of Intent to Acquire Property as the site for a possible future CL&P 115-kV substation located within an industrial park between Jacks Hill Road and Christian Street and a transmission line easement adjacent to the existing right-of-way for possible future transmission line use located near the Waterbury Oxford Airport, Oxford, Connecticut. Record.
42. CONNECTICUT SITING COUNCIL, DOCKET NO. 370MR - The Connecticut Light & Power Company Certificate of Environmental Compatibility and Public Need for the Manchester Substation to Meekville Junction Circuit Separation Project in Manchester, Connecticut. Record.
43. CONNECTICUT SITING COUNCIL, DOCKET NO. 461 - Eversource Energy application for a Certificate of Environmental Compatibility and Public Need for the construction, maintenance, and operation of a 115-kilovolt (kV) bulk substation located at 290 Railroad Avenue, Greenwich, Connecticut, and two 115-kV underground transmission circuits extending approximately 2.3 miles between the proposed substation and the existing Cos Cob Substation, Greenwich, Connecticut, and related substation improvements. Record.
44. CONNECTICUT SITING COUNCIL ENERGY/TELECOMMUNICATIONS REGULAR MEETING MINUTES, May 25, 2017.

Department of Energy and Environmental Protection

45. STATE OF CONNECTICUT, DEPARTMENT OF ENERGY AND ENVIRONMENTAL PROTECTION, CONNECTICUT COUNCIL ON SOIL AND WATER CONSERVATION, *Connecticut Guidelines for Soil Erosion and Sediment Control, DEP Bulletin 34*, May 2002, last revised September 2007, available at http://www.ct.gov/dep/cwp/view.asp?a=2720&q=325660&depNav_GID=1654
46. State of Connecticut Department of Energy and Environmental Protection, *The Connecticut Stormwater Quality Manual*, 2004, and appendices, available at http://www.ct.gov/DEP/cwp/view.asp?a=2721&q=325704&depNav_GID=1654

47. STATE OF CONNECTICUT, DEPARTMENT OF ENERGY AND ENVIRONMENTAL PROTECTION, *Amphibians and Reptiles in Connecticut*, DEP Bulletin 32, Michael W. Klemens, 2000, available at <http://ctdepstore.com/Amphibians-and-Reptiles-in-Connecticut-101.htm>
48. STATE OF CONNECTICUT, DEPARTMENT OF ENERGY AND ENVIRONMENTAL PROTECTION, BUREAU OF WATER MANAGEMENT, PLANNING AND STANDARDS DIVISION, *Water Quality Standards*, Surface Water Quality Standards Effective February 25, 2011 and Ground Water Quality Standards Effective April 12, 1996, available at http://www.ct.gov/dep/lib/dep/water/water_quality_standards/wqs.pdf
49. STATE OF CONNECTICUT, DEPARTMENT OF ENERGY AND ENVIRONMENTAL PROTECTION, *Connecticut Air Quality Standards*, Effective April 15, 2014, Regulations of Connecticut State Agencies §§ 22a-174-24, et seq., available at <http://www.ct.gov/deep/lib/deep/air/regulations/mainregs/sec24.pdf>
50. STATE OF CONNECTICUT, DEPARTMENT OF ENERGY AND ENVIRONMENTAL PROTECTION, *Connecticut Noise Control Regulations*, Effective June 15, 1978, Regulations of Connecticut State Agencies §§ 22a-69-1, et seq., available at <http://www.ct.gov/deep/lib/deep/regulations/22a/22a-69-1through7.pdf>
51. STATE OF CONNECTICUT, DEPARTMENT OF ENERGY AND ENVIRONMENTAL PROTECTION, 2014 *Integrated Resource Plan for Connecticut*, March 17, 2015, available at <http://www.dpuc.state.ct.us/DEPEnergy.nsf/c6c6d525f7cdd1168525797d0047c5bf/8e95d81c37c7237085257e0b004770b2?OpenDocument>
52. STATE OF CONNECTICUT, DEPARTMENT OF ENERGY AND ENVIRONMENTAL PROTECTION, 2013 *Comprehensive Energy Strategy for Connecticut*, February 19, 2013, available at http://www.ct.gov/deep/lib/deep/energy/cep/2013_ces_final.pdf
53. STATE OF CONNECTICUT, DEPARTMENT OF ENERGY AND ENVIRONMENTAL PROTECTION, BUREAU OF NATURAL RESOURCES, *Connecticut's Endangered, Threatened and Special Concern Species 2015*, August 2015, available at http://www.ct.gov/deep/lib/deep/wildlife/pdf_files/nongame/ETS15.pdf

Department of Public Health

54. STATE OF CONNECTICUT, DEPARTMENT OF PUBLIC HEALTH, *Electric and Magnetic Fields (EMF): Health Concerns Fact Sheet*, April 2008, available at http://www.ct.gov/dph/lib/dph/environmental_health/eoha/pdf/emf_fact_sheet_-_2008.pdf

Department of Transportation

55. STATE OF CONNECTICUT DEPARTMENT OF TRANSPORTATION, *ConnDOT Drainage Manual*, 2000, last revised December 2003, available at <http://www.ct.gov/dot/cwp/view.asp?a=3200&q=260116>
56. STATE OF CONNECTICUT, DEPARTMENT OF TRANSPORTATION, *Utility Accommodation Manual*, February 2009, available at <http://www.ct.gov/dot/lib/dot/documents/dutilities/ACCOMODATION.pdf>
57. STATE OF CONNECTICUT, DEPARTMENT OF TRANSPORTATION, BUREAU OF ENGINEERING AND HIGHWAY OPERATIONS, *Public Service Facility Policy and Procedures for Highways in Connecticut*, November 2008, available at <http://www.ct.gov/dot/lib/dot/documents/dutilities/UtilityPolicyProcedures.pdf>

Other State Agencies

58. PUBLIC UTILITIES REGULATORY AUTHORITY, *Cybersecurity and Connecticut's Public Utilities*, April 14, 2014, available at http://www.ct.gov/pura/lib/pura/electric/cyber_report_041414.pdf
59. PUBLIC UTILITIES REGULATORY AUTHORITY, *Connecticut Public Utilities Cybersecurity Action Plan*, April 6, 2016, available at http://www.ct.gov/pura/lib/pura/electric/cyber_report_April_6_2016.pdf
60. STATE OF CONNECTICUT, DEPARTMENT OF ECONOMIC AND COMMUNITY DEVELOPMENT, STATE HISTORIC PRESERVATION OFFICE, *Investment in Connecticut: State Historic Preservation Plan 2011-2016*, July 2011, available at http://www.ct.gov/cct/lib/cct/state_historic_preservation_plan_ic.pdf
61. STATE OF CONNECTICUT, OFFICE OF POLICY AND MANAGEMENT, *Conservation and Development Policies Plan for Connecticut 2013-2018*, June 5, 2013, available at http://www.ct.gov/opm/lib/opm/igp/org/cdupdate/2013-2018_cd_plan.pdf
62. Final Report of the Two Storm Panel, January 9, 2012, available at http://www.governor.ct.gov/malloy/lib/malloy/two_storm_panel_final_report.pdf
63. STATE OF CONNECTICUT, DEPARTMENT OF EMERGENCY SERVICES AND PUBLIC PROTECTION, DIVISION OF EMERGENCY MANAGEMENT AND HOMELAND SECURITY, *State of Connecticut State Response Framework, Version 2.0*, August 2011, available at http://www.ct.gov/demhs/lib/demhs/ct_srf_aug_2011.pdf
64. STATE OF CONNECTICUT, DEPARTMENT OF EMERGENCY SERVICES AND PUBLIC PROTECTION, DIVISION OF EMERGENCY MANAGEMENT AND HOMELAND SECURITY, *State of Connecticut State Response Framework, Draft Connecticut Emergency Support Function 12, All Hazards Energy and Utilities Annex*, July 2012, available at http://www.ct.gov/demhs/lib/demhs/eppi/esf_12_all-hazards_energy_and_utilities_annex_final_draft_july_2012.pdf
65. GOVERNOR'S STEERING COMMITTEE ON CLIMATE CHANGE, ADAPTATION SUBCOMMITTEE, *Connecticut Climate Change Preparedness Plan, Adaptation Strategies for Agriculture, Infrastructure, Natural Resources and Public Health Climate Change Vulnerabilities*, 2011, available at http://www.ct.gov/deep/lib/deep/climatechange/connecticut_climate_preparedness_plan_2011.pdf
66. STATE OF CONNECTICUT, STATE VEGETATION MANAGEMENT TASK FORCE, *Final Report Issued to the Connecticut Department of Energy and Environmental Protection*, August 28, 2012, available at http://www.ct.gov/deep/lib/deep/forestry/vmtf/final_report/svmtf_final_report.pdf

TECHNICAL

67. INSTITUTE OF ELECTRICAL AND ELECTRONICS ENGINEERS, *IEEE Standard Procedures for Measurement of Power Frequency Electric and Magnetic Fields From AC Power Lines*, IEEE Std 644-1994, Reaffirmed 2008, available for purchase at <http://standards.ieee.org/findstds/standard/644-1994.html>
68. INSTITUTE OF ELECTRICAL AND ELECTRONICS ENGINEERS, *IEEE Guide for the Design, Construction, and Operation of Safe and Reliable Substations for Community Acceptance and Environmental Compatibility*, IEEE Std 1127-2013, available for purchase at <http://standards.ieee.org/findstds/standard/1127-2013.html>

69. INSTITUTE OF ELECTRICAL AND ELECTRONICS ENGINEERS, *2015 IEEE Guide for Animal Deterrents for Electric Power Supply Substations*, June 9, 2015, available for purchase at <https://standards.ieee.org/findstds/standard/1264-2015.html>
70. INSTITUTE OF ELECTRICAL AND ELECTRONICS ENGINEERS, *National Electrical Safety Code*, American National Standards Institute, Standard C2-2017, October 18, 2016.
71. EXPONENT, INC., *EMF and Health: Review and Update of the Scientific Research*, January 28, 2009, available at <http://transmission.bchydro.com/NR/rdonlyres/DEF09171-908A-48DF-A9DA-F28676D239FD/0/Exponent2009EMFUpdate0209.pdf>
72. EXPONENT, INC., *Current Status of Research on Extremely Low Frequency Electric and Magnetic Fields and Health: Interstate Reliability Project*, January 10, 2011, available at http://www.ct.gov/csc/lib/csc/pendingproceeds/docket_424/424_application/v1interstate_csc_application_v1.pdf (Appendix D EMF Health Report)

ENVIRONMENTAL

73. RICHARD M. DEGRAAF & DEBORAH D. RUDIS, *New England Wildlife: Habitat, Natural History, and Distribution*, University of Massachusetts Press, 1983, available at <http://www.treearch.fs.fed.us/pubs/4148>
74. ARAM J.K. CALHOUN & MICHAEL W. KLEMENS, *Best Development Practices: Conserving Pool-Breeding Amphibians in Residential and Commercial Developments in the Northeastern United States*, MCA Technical Paper No. 5, Metropolitan Conservation Alliance 2002, available at <http://www.umaine.edu/vernalpools/PDFs/Best%20Development%20Practices%20%20-%20%20Conserving%20Pool-breeding%20Amph.pdf>
75. ARAM J.K. CALHOUN, ET. AL., *Conserving pool-breeding amphibians in human-dominated landscapes through local implementation of Best Development Practices*, *Wetlands Ecology and Management*, July 9, 2004 at 291, available at <http://www.environmental-expert.com/Files/0/articles/9373/Conservingpool-breeding.pdf>
76. AVIAN POWER LINE INTERACTION COMMITTEE, *Suggested Practices for Avian Protection on Power Lines*, 2006, available at [http://www.aplic.org/uploads/files/2643/SuggestedPractices2006\(LR-2\).pdf](http://www.aplic.org/uploads/files/2643/SuggestedPractices2006(LR-2).pdf)
77. CHRISTOPHER BARTON AND KAREN KINKEAD, *Do Erosion Control and Snakes Mesh?*, *Journal of Science and Water Conservation* 2005, Volume 60, Number 2, available at <http://www.treearch.fs.fed.us/pubs/21050>

MAPS

78. STATE OF CONNECTICUT, DEPARTMENT OF ENERGY AND ENVIRONMENTAL PROTECTION, NATURAL RESOURCES DIVISION, *Atlas of Connecticut Topographic Maps*, DEP Bulletin 17, 1992, available at http://www.ct.gov/deep/cwp/view.asp?a=2701&q=323450&deepNav_GID=1636
79. STATE OF CONNECTICUT DEPARTMENT OF ENERGY AND ENVIRONMENTAL PROTECTION, *Natural Diversity Database Map for the Towns of Greenwich*, last updated December 2014, available at <http://www.depdata.ct.gov/naturalresources/endangeredspecies/nddbpdfs.asp>

80. CONNECTICUT FOREST & PARK ASSOCIATION, *Connecticut Walk Book West*, Ann T. Colson, ed., 19th ed. 2006, available at <http://www.ctwoodlands.org/node/17>
81. National Audubon Society, *Connecticut Important Bird Areas*, last updated 2015, available at <http://netapp.audubon.org/iba/state/US-CT>
82. Mail-A-Map Street Map, Town of Greenwich, available at <http://mailamap.com/street-maps>
83. UNITED STATES GEOLOGICAL SURVEY, *Connecticut Topographic Map Collection*, available at http://magic.lib.uconn.edu/topographic_maps.html
84. STATE OF CONNECTICUT DEPARTMENT OF TRANSPORTATION, *Connecticut Official State Tourism Map*

Docket 461A
Eversource Suggestions for CSC Field Review

Meeting Agenda

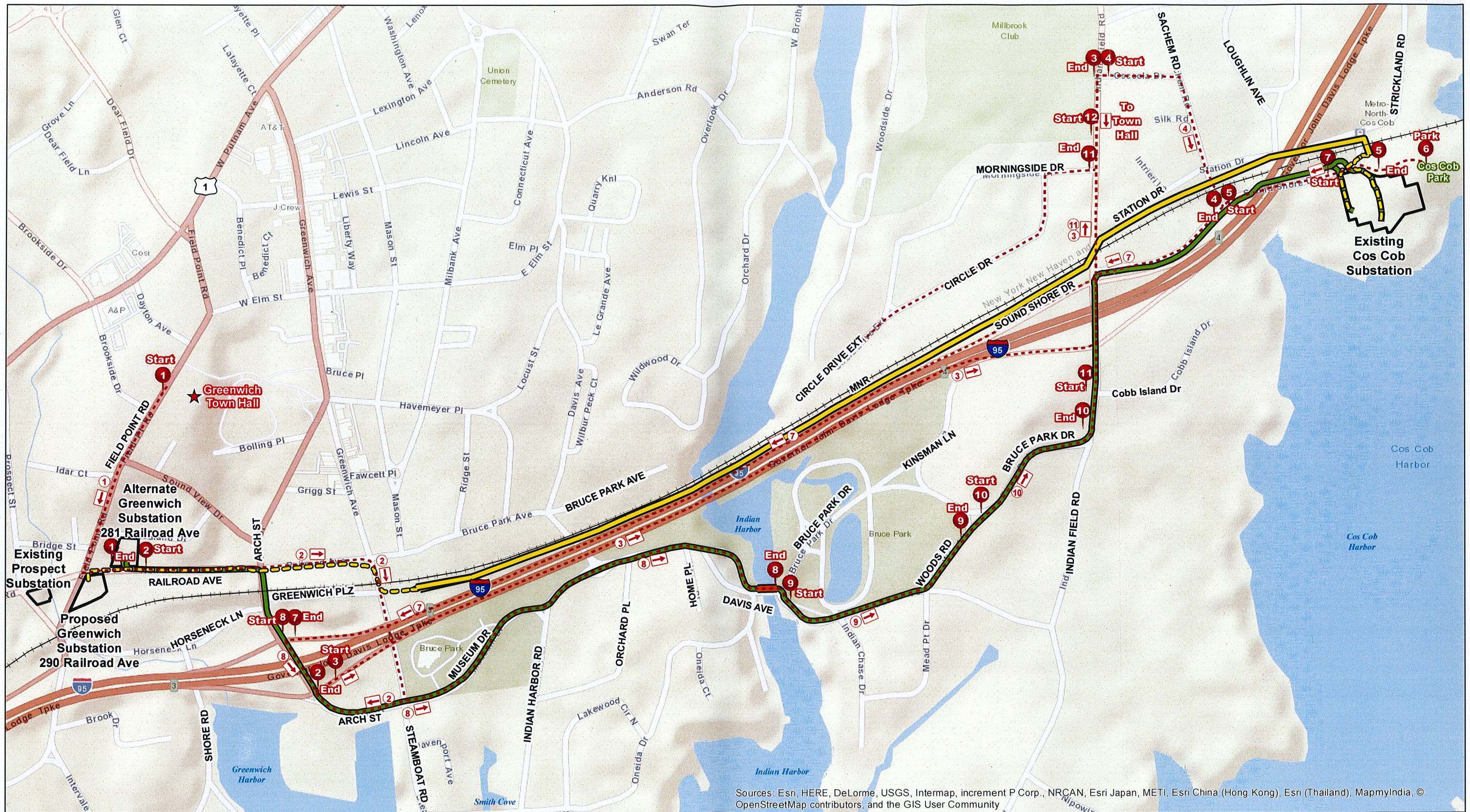
- **Meeting Location and Duration**
 - Greenwich Town Hall: 101 Field Point Road, Greenwich, CT
 - Duration: 2pm to 4pm
- **Field Review Logistics**
 - **Review New Substation locations**
 1. Drive from Town Hall to the proposed and alternate Greenwich Substation locations (The “Pole Yard” and the existing Pet Pantry site) where participants can exit the bus to view the two sites
 - **Review Proposed Modified Route**
 2. Drive the UG portion of Proposed Modified route by going east along Railroad Avenue, then south on Steamboat Road. Site of proposed OH/UG transition structures 14000A/1400B would be accessed off of Steamboat Road. The bus would then continue along Arch Street before entering the I-95 northbound lanes at Exit 3.
 3. Exit off of I-95 at Exit 4, turning north on Indian Field Road, passing the OH crossing of Indian Field Road between proposed overhead structures 14013 and 14014 of the Proposed Modified Route
 4. Turn on Osceola Drive then turn on Sachem driving past the OH crossing of Sachem Rd. between proposed overhead structures 14016 and 14017 of the Proposed Modified Route.
 5. Turn onto Sound Shore Drive past the location of proposed OH/UG transition structures 14019 A/B of the Proposed Modified Route
 - **Review Cos Cob Substation Upgrades (same for both Proposed and Alternate Modified Project)**
 6. Park Bus at Cos Cob Park where field visit participants can exit the bus to review the modifications at Cos Cob Substation. There is a restroom at Cos Cob Park.
 - Continue Review of Proposed Modified Route
 7. Exit Cos Cob substation in a westerly direction along Sound Shore Drive before entering the I-95 southbound lanes at Exit 4. Drive in right lane of I-95 so the locations of proposed overhead structures 14012 through 14002 of the Proposed Modified Route and the force main variation are generally visible. Exit off of I-95 at Exit 3
 - **Review Alternate Modified Route**
 8. After exiting off of I-95 at Exit 3, turn south along Arch Street to follow the Alternate Modified Project Route, then continue along Museum Drive, before turning north along Indian Harbor Drive (which turns into Davis Avenue).
 9. Continue to follow the Alternate Modified Route by continuing on Davis Avenue to the intersection of Wood Road. Along Wood Road, field review participants will have the opportunity to exit the bus.
 10. Continue along the Alternate Modified Project Route north on Wood Road and then east on Bruce Park Drive before turning north on Indian Field Road

- **Circle Drive Vantage Point (Proposed Modified Route)**

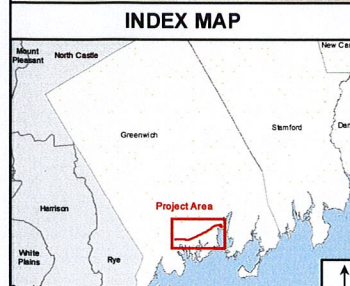
11. After crossing over I-95 along Indian Field Road turn onto Morningside Drive then onto Circle Drive where the Proposed Modified Route would be visible.
12. The field review will terminate at the Town of Greenwich town hall

➤ **Nearby Hospitals**

- Greenwich Hospital: 5 Perryridge Rd, Greenwich, CT 06830 (~2 miles)
- Stamford Hospital: 1 Hospital Plaza, Stamford, CT 06902 (~6 miles)



Sources: Esri, HERE, DeLorme, USGS, Intermap, increment P Corp., NRCAN, Esri Japan, METI, Esri China (Hong Kong), Esri (Thailand), MapmyIndia, © OpenStreetMap contributors, and the GIS User Community



Legend

- Proposed Modified Overhead Route
- Proposed Modified Underground Route
- Proposed Alternate Modified Route
- Proposed New Pedestrian Bridge
- Railroad
- Proposed Greenwich Substation Location (290 Railroad Ave)
- Alternate Greenwich Substation (281 Railroad Ave)
- Existing Cos Cob Substation Location
- Existing Prospect Substation Location
- - - CSC Field Review Driving Route
- Route Start/End Point

Base Map: ESRI Street Map

1 inch = 650 feet

650 325 0 650 Feet

CSC Field Review Driving Route

Greenwich Substation and Line Project
Greenwich, Connecticut

EVERSOURCE ENERGY

ALL-POINTS TECHNOLOGY CORPORATION

May 2017