

August 21, 2015

VIA HAND DELIVERY

Attorney Melanie Bachman
Acting Executive Director
Connecticut Siting Council
Ten Franklin Square
New Britain, CT 06051

Re: **DOCKET NO. 461** - Eversource Energy Application for a Certificate of Environmental Compatibility and Public Need for the construction, maintenance, and operation of a 115-kilovolt (kV) bulk substation located at 290 Railroad Avenue, Greenwich, Connecticut, and two 115-kV underground transmission circuits extending approximately 2.3 miles between the proposed substation and the existing Cos Cob Substation, Greenwich, Connecticut, and related substation improvements.

Dear Attorney Bachman:

In connection with Docket No. 461, enclosed please find the original and fifteen (15) copies of the following:

1. Greenwich Alternate Site (Pole Yard) – Layout Drawing;
2. List of Sign Locations;
3. Field Review Driving Route; and
4. Request to Take Administrative Notice.

Very truly yours,


Marianne Barbino Dubuque

MBD/mkw
Enclosures

cc: Service List dated July 23, 2015
Mark L. Bergamo, Esq.
Edward L. Marcus, Esq.
Mr. Parker Stacy
Ms. Carissa Depetris

{W2576867}

**STATE OF CONNECTICUT
CONNECTICUT SITING COUNCIL**

<p>Eversource Energy Application for a Certificate of Environmental Compatibility and Public Need for the construction, maintenance, and operation of a 115-kilovolt (kV) bulk substation located at 290 Railroad Avenue, Greenwich, Connecticut, and two 115-kV underground transmission circuits extending approximately 2.3 miles between the proposed substation and the existing Cos Cob Substation, Greenwich, Connecticut, and related substation improvements.</p>	<p style="text-align:center">DOCKET NO. 461</p> <p style="text-align:center">August 21, 2015</p>
--	--

CERTIFICATE OF SERVICE

This is to certify that copies of the foregoing transmittal letter with the following enclosures:

Greenwich Alternate Site (Pole Yard) – Layout Drawing

List of Sign Locations


Field Review Driving Route

Request to Take Administrative Notice

were sent to each party and intervenor on the service list dated July 23, 2015, with method of service to each party and intervenor listed via e-mail on August 21, 2015.

cc: Service List Dated July 23, 2015
Mark L. Bergamo, Esq.
Edward L. Marcus, Esq.
Mr. Parker Stacy
Ms. Carissa Depetris

Dated: August 21, 2015

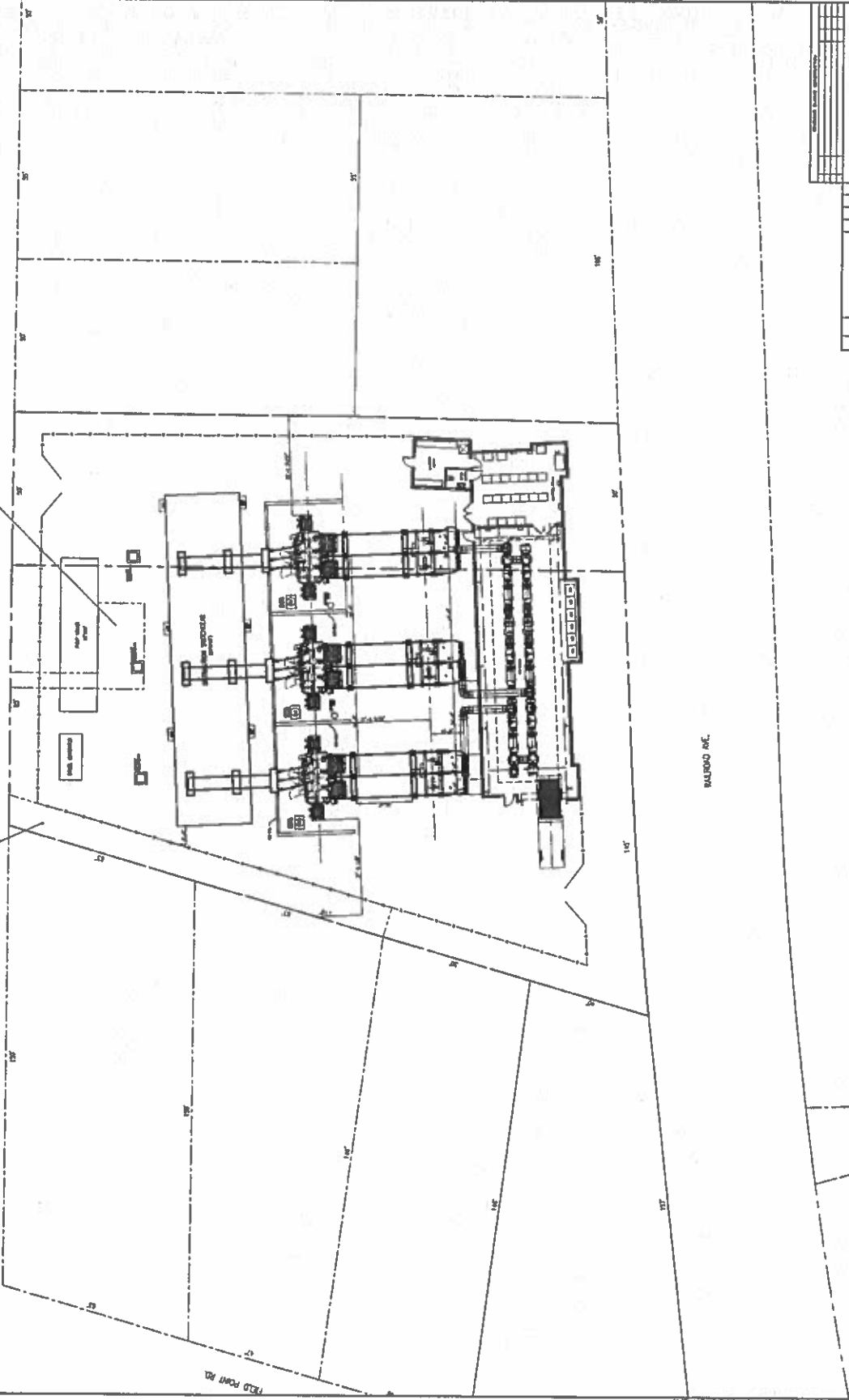

Marianne Barbino Dubuque



1'0" WIDE PA.V. IN FRONT OF OTHERS.

WOODLAND DR.

EXISTING IN FRONT OF WOODLAND TELEPHONE COMPANY.



EVEN SOURCE	
NEW BUILDING LAYOUT - EXISTING SITE	
321 W. 100th St. ALBANY, N.Y.	
DATE: 10/1/58	
DRAWN BY: [Name]	
CHECKED BY: [Name]	
SCALE: 1" = 100'	
PROJECT NO. [Number]	
SHEET NO. [Number]	

Docket No. 461 - Greenwich Substation and Line Project
CSC Hearing – Sign Locations

Six (6) Signs were posted at the following locations on August 18, 2015:

1. Proposed Greenwich Substation Site at 290 Railroad Avenue – along Field Point Road frontage
2. Alternate Site at 281 Railroad Avenue – south side fence, and north side adjacent Woodland Drive (2 signs)
3. Cos Cob Substation on Sound Shore Drive – on the fence at the entrance
4. Intersection of Bruce Park Drive and Kinsman Lane
5. Arch Street Parking Lot - on the east side of Arch Street

Docket No. 461 - Greenwich Substation and Line Project
CSC Hearing – Field Review Driving Route

1. Board the buses in front of Greenwich Library, Putnam Avenue
2. Head to Cos Cob Substation and drive the Preferred Route
Stops at Cos Cob Substation, Bruce Park, and 330 Railroad Avenue
3. Drive the Northern Alternative – West to East
4. Drive the Southern Alternative
5. Return to the front of the Greenwich Library

Estimated Driving Time is 1:45 minutes

**STATE OF CONNECTICUT
CONNECTICUT SITING COUNCIL**

<p>Eversource Energy Application for a Certificate of Environmental Compatibility and Public Need for the construction, maintenance, and operation of a 115-kilovolt (kV) bulk substation located at 290 Railroad Avenue, Greenwich, Connecticut, and two 115-kV underground transmission circuits extending approximately 2.3 miles between the proposed substation and the existing Cos Cob Substation, Greenwich, Connecticut, and related substation improvements.</p>	<p style="text-align:center">DOCKET NO. 461</p> <p style="text-align:center">August 21, 2015</p>
--	--

REQUEST TO TAKE ADMINISTRATIVE NOTICE

The Applicant respectfully requests that the Connecticut Siting Council take administrative notice of the following items which may provide useful information on issues relevant to this Docket:

1. ISO NEW ENGLAND, INC., TRANSMISSION OPERATING AGREEMENT AMONG ISO NEW ENGLAND, INC., AND PARTICIPATING TRANSMISSION OWNERS, February 1, 2005, available at http://www.iso-ne.com/regulatory/toa/v1_er07-1289-000_toa_composite.pdf
2. ISO NEW ENGLAND, INC., OVERVIEW OF THE BULK POWER SYSTEM AND ISO NEW ENGLAND, ISO 101, October 1, 2014, available at <http://isonewengland.org/static-assets/documents/2014/08/iso101-t1-isocore.pdf>
3. ISO NEW ENGLAND, INC., 2013 REGIONAL SYSTEM PLAN (November 8, 2013), available at <http://www.iso-ne.com/trans/rsp/2013/index.html>
4. ISO NEW ENGLAND PLANNING PROCEDURE 3, PP 3 - RELIABILITY STANDARDS FOR THE NEW ENGLAND AREA BULK POWER SUPPLY SYSTEM. Effective Date: March 5, 2010, available at http://www.iso-ne.com/rules_proceeds/isone_plan/pp03/pp3_r5.pdf
5. ISO NEW ENGLAND INC. TRANSMISSION, MARKETS AND SERVICES TARIFF (FORMERLY KNOWN AS FERC ELECTRIC TARIFF NO. 3). October 1, 2011, available at http://www.iso-ne.com/regulatory/tariff/sect_1/sect_i.pdf

6. ISO NEW ENGLAND INC. NEW ENGLAND 2030 POWER SYSTEM STUDY, REPORT TO THE NEW ENGLAND GOVERNORS --2009 ECONOMIC STUDY: SCENARIO ANALYSIS OF RENEWABLE RESOURCE DEVELOPMENT February 2010, *available at* http://www.iso-ne.com/committees/comm_wkgrps/prtcpts_comm/pac/reports/2010/economicstudyreportfinal_022610.pdf
7. Northeast Power Coordinating Council, Inc. Regional Reliability Reference Directory #1, Design and Operation of the Bulk Power System. December 1, 2009 (replaced Document A-2), *available at* https://www.npcc.org/Standards/Directories/Directory%201_Design%20Ops%20BPS%20clean%20GJD%2020150331_GJD.pdf
8. Northeast Power Coordinating Council, Inc. Regional Reliability Reference Directory #4, Bulk Power System Protection Criteria. December 1, 2009 (replaced Document A-5), *available at* https://www.npcc.org/Standards/Directories/Directory%204%20-%20System%20Protection%20Criteria%20Clean_20150331_GJD.pdf
9. **DOCKET NO. 346** - Implementation of Section 8 and Section 54 of Public Act No. 07-242, An Act Concerning Electricity and Energy Efficiency. Record.
10. **DOCKET NO. 217** - NORTHEAST UTILITIES SERVICE COMPANY CERTIFICATE OF ENVIRONMENTAL COMPATIBILITY AND PUBLIC NEED FOR THE CONSTRUCTION OF A 345-KV ELECTRIC TRANSMISSION LINE AND RECONSTRUCTION OF AN EXISTING 115-KV ELECTRIC TRANSMISSION LINE BETWEEN CONNECTICUT LIGHT AND POWER COMPANY'S PLUMTREE SUBSTATION IN BETHEL, THROUGH THE TOWNS OF REDDING, WESTON, AND WILTON, AND TO NORWALK SUBSTATION IN NORWALK, CONNECTICUT.
11. **DOCKET NO. 272** - THE CONNECTICUT LIGHT AND POWER COMPANY AND THE UNITED ILLUMINATING COMPANY CERTIFICATE OF ENVIRONMENTAL COMPATIBILITY AND PUBLIC NEED FOR THE CONSTRUCTION OF A NEW 345-KV ELECTRIC TRANSMISSION LINE AND ASSOCIATED FACILITIES BETWEEN THE SCOVILL ROCK SWITCHING STATION IN MIDDLETOWN AND THE NORWALK SUBSTATION IN NORWALK, CONNECTICUT. THIS INCLUDES CONSTRUCTION OF THE BESECK SWITCHING STATION IN WALLINGFORD, EAST DEVON SUBSTATION IN MILFORD, AND SINGER SUBSTATION IN BRIDGEPORT AND MODIFICATIONS TO THE SCOVILL ROCK SWITCHING STATION AND THE NORWALK SUBSTATION AND CERTAIN INTERCONNECTIONS.
12. **DOCKET NO. 292** - THE CONNECTICUT LIGHT & POWER COMPANY CERTIFICATE OF ENVIRONMENTAL COMPATIBILITY AND PUBLIC NEED FOR THE CONSTRUCTION AND OPERATION OF 8.7 MILES OF NEW UNDERGROUND 115-KILOVOLT ELECTRIC TRANSMISSION CABLES EXTENDING FROM CL&P'S EXISTING GLENBROOK SUBSTATION IN THE CITY OF STAMFORD, THROUGH THE TOWN OF DARIEN, TO CL&P'S EXISTING NORWALK SUBSTATION IN THE CITY OF NORWALK.
13. **DOCKET NO. 370** – CONSOLIDATED PROCEEDING PURSUANT TO THE CONNECTICUT ENERGY ADVISORY BOARD (CEAB) REQUEST FOR PROPOSAL (RFP) PROCESS UNDER C.G.S. §16A-7C. **ORIGINAL APPLICATION:** THE CONNECTICUT LIGHT & POWER COMPANY CERTIFICATES OF ENVIRONMENTAL COMPATIBILITY AND PUBLIC NEED FOR THE CONNECTICUT VALLEY ELECTRIC TRANSMISSION RELIABILITY PROJECTS WHICH CONSIST OF (1) THE CONNECTICUT PORTION OF THE GREATER SPRINGFIELD RELIABILITY PROJECT THAT TRAVERSES THE MUNICIPALITIES OF

BLOOMFIELD, EAST GRANBY, AND SUFFIELD, OR POTENTIALLY INCLUDING AN ALTERNATE PORTION THAT TRAVERSES THE MUNICIPALITIES OF SUFFIELD AND ENFIELD, TERMINATING AT THE NORTH BLOOMFIELD SUBSTATION; AND (2) THE MANCHESTER SUBSTATION TO MEEKVILLE JUNCTION CIRCUIT SEPARATION PROJECT IN MANCHESTER, CONNECTICUT. **COMPETING APPLICATION:** NRG ENERGY, INC. APPLICATION PURSUANT TO C.G.S. §16-50L(A)(3) FOR CONSIDERATION OF A 530 MW COMBINED CYCLE GENERATING PLANT IN MERIDEN, CONNECTICUT.

14. **DOCKET NO. 424** - THE CONNECTICUT LIGHT & POWER COMPANY CERTIFICATE OF ENVIRONMENTAL COMPATIBILITY AND PUBLIC NEED FOR THE CONNECTICUT PORTION OF THE INTERSTATE RELIABILITY PROJECT THAT TRAVERSES THE MUNICIPALITIES OF LEBANON, COLUMBIA, COVENTRY, MANSFIELD, CHAPLIN, HAMPTON, BROOKLYN, POMFRET, KILLINGLY, PUTNAM, THOMPSON, AND WINDHAM, WHICH CONSISTS OF (A) NEW OVERHEAD 345-KV ELECTRIC TRANSMISSION LINES AND ASSOCIATED FACILITIES EXTENDING BETWEEN CL&P'S CARD STREET SUBSTATION IN THE TOWN OF LEBANON, LAKE ROAD SWITCHING STATION IN THE TOWN OF KILLINGLY, AND THE CONNECTICUT/RHODE ISLAND BORDER IN THE TOWN OF THOMPSON; AND (B) RELATED ADDITIONS AT CL&P'S EXISTING CARD STREET SUBSTATION, LAKE ROAD SWITCHING STATION, AND KILLINGLY SUBSTATION.
15. **DOCKET NO. 435** - THE CONNECTICUT LIGHT & POWER COMPANY CERTIFICATE OF ENVIRONMENTAL COMPATIBILITY AND PUBLIC NEED FOR THE STAMFORD RELIABILITY CABLE PROJECT, WHICH CONSISTS OF CONSTRUCTION, MAINTENANCE, AND OPERATION OF A NEW 115-KV UNDERGROUND TRANSMISSION CIRCUIT EXTENDING APPROXIMATELY 1.5 MILES BETWEEN GLENBROOK AND SOUTH END SUBSTATIONS, STAMFORD, CONNECTICUT AND RELATES SUBSTATION IMPROVEMENTS.
16. 2012 INTEGRATED RESOURCES PLAN FOR CONNECTICUT, CONNECTICUT DEPT. OF ENERGY AND ENVIRONMENTAL PROTECTION, June 14, 2012, *available at* <http://www.dpuc.state.ct.us/DEEPEnergy.nsf/c6c6d525f7cdd1168525797d0047c5bf/cb827b1ffa58b2fd85257a1d0060c374?OpenDocument>
17. STATE OF CONNECTICUT ENERGY EFFICIENCY BOARD, 2014 PROGRAMS AND OPERATIONS REPORT (MARCH 1, 2015), *available at* <http://www.energizect.com/sites/default/files/uploads/Final%20ALR%202014%20Pages.2.26.15.pdf>
18. CONNECTICUT CLEAN ENERGY FUND, FY 2013– FY 2015 COMPREHENSIVE PLAN, *available at* <http://www.ctcleanenergy.com/Portals/0/FY13%20Comprehensive%20Plan.pdf>
19. An Act Establishing Connecticut Heritage Areas, as amended, 2009 Conn. Acts 221 (Reg. Sess.), codified at Conn. Gen. Stat. §16a-27 (2010), *available at* <http://www.cga.ct.gov/2009/ACT/PA/2009PA-00221-R00HB-06584-PA.htm>
20. State Plan of Conservation and Development, as amended, Conn. Gen. Stat. §§ 16a-27 to 16a-32a (2015).

21. EXPONENT, INC., UPDATE OF RESEARCH ON EXTREMELY LOW FREQUENCY ELECTRIC AND MAGNETIC FIELDS AND HEALTH (MAY 1, 2011 – JULY 31, 2012) CONNECTICUT SITING COUNCIL, DOCKET NO. 435, APPLICATION, APPENDIX D.4
22. THE BRATTLE GROUP, CONNECTICUT LIGHT AND POWER, AND THE UNITED ILLUMINATING COMPANY, INTEGRATED RESOURCE PLAN FOR CONNECTICUT (January 1, 2010), *available at* <http://www.ctenergy.org/pdf/2010IRP.pdf>
23. United States Code of Federal Regulations Title 33, Clean Water Act, Sections 401 and 404.
24. Conn. Gen. Stat. §16-243 and §§16-11-134, and 135 of the Regulations of Connecticut State Agencies.
25. 2012-2021 Forecast Report of Capacity, Energy, Loads & Transmission (CELT). ISO New England Inc. System Planning, May 2012, *available at* http://www.iso-ne.com/trans/celt/report/2012/2012_celt_report.pdf
26. The Connecticut Light and Power Company, 2012 Forecast of Loads and Resources for the Period 2012-2021. March 1, 2012, *available at* http://www.ct.gov/csc/lib/csc/pendingproceeds/forecast_2012_2013/annual_reports/f2012-20120301-cl&p.pdf
27. The Connecticut Light and Power Company, 2013 Forecast of Loads and Resources for the Period 2013-2022. March 1, 2013, *available at* http://www.ct.gov/csc/lib/csc/pendingproceeds/forecast_2012_2013/annual_reports_2013/cl&p_20130301.pdf
28. The Connecticut Light and Power Company, 2014 Forecast of Loads and Resources for the Period 2012-2021. February 28, 2014, *available at* http://www.ct.gov/csc/lib/csc/pendingproceeds/forecast_2014_2015/2014documents/f2014-20140228-cl&p.pdf
29. The Connecticut Light and Power Company, doing business as Eversource Energy, 2015 Forecast of Loads and Resources for the Period 2015-2024, March 2, 2015, *available at* http://www.ct.gov/csc/lib/csc/pendingproceeds/forecast_2014_2015/2015_documents/1_marchfilings/f-2014-2015-20150302_eversourcerpt.pdf
30. The New England Energy Alliance, Electricity Transmission Infrastructure Development in New England Value through Reliability, Economic and Environmental Benefits. Polestar Communications & Strategic Analysis. December 2007, *available at* <http://www.newenglandenergyalliance.org/>
31. North American Electric Reliability Corporation, Special Report: Electric Industry Concerns on the Reliability Impacts of Climate Change Initiatives. Version 1.1. November 12, 2008, *available at* <http://www.nerc.com/files/2008-climate-initiatives-report.pdf>
32. World Health Organization, Electromagnetic Fields and Public Health, Exposure to Extremely Low Frequency Fields – Fact Sheet #322. June 2007, *available at* <http://www.who.int/mediacentre/factsheets/fs322/en/index.htm>


Finally, a few items on the Council's Administrative Notice List were updated and Eversource requests that the Council update such items as follows:

- a) Item 5 – National Register of Historic Places, September 2014; and
- b) Item 59 – Connecticut Important Bird Areas, 2015.

Respectfully submitted,

APPLICANT,
EVERSOURCE ENERGY

BY:


Marianne Barbino Dubuque
Carmody Torrance Sandak & Hennessey LLP
50 Leavenworth Street
Waterbury, CT 06702
Its Attorneys

cc: Service List Dated July 23, 2015
Mark L. Bergamo, Esq.
Edward L. Marcus, Esq.
Mr. Parker Stacy
Ms. Carissa Depetris