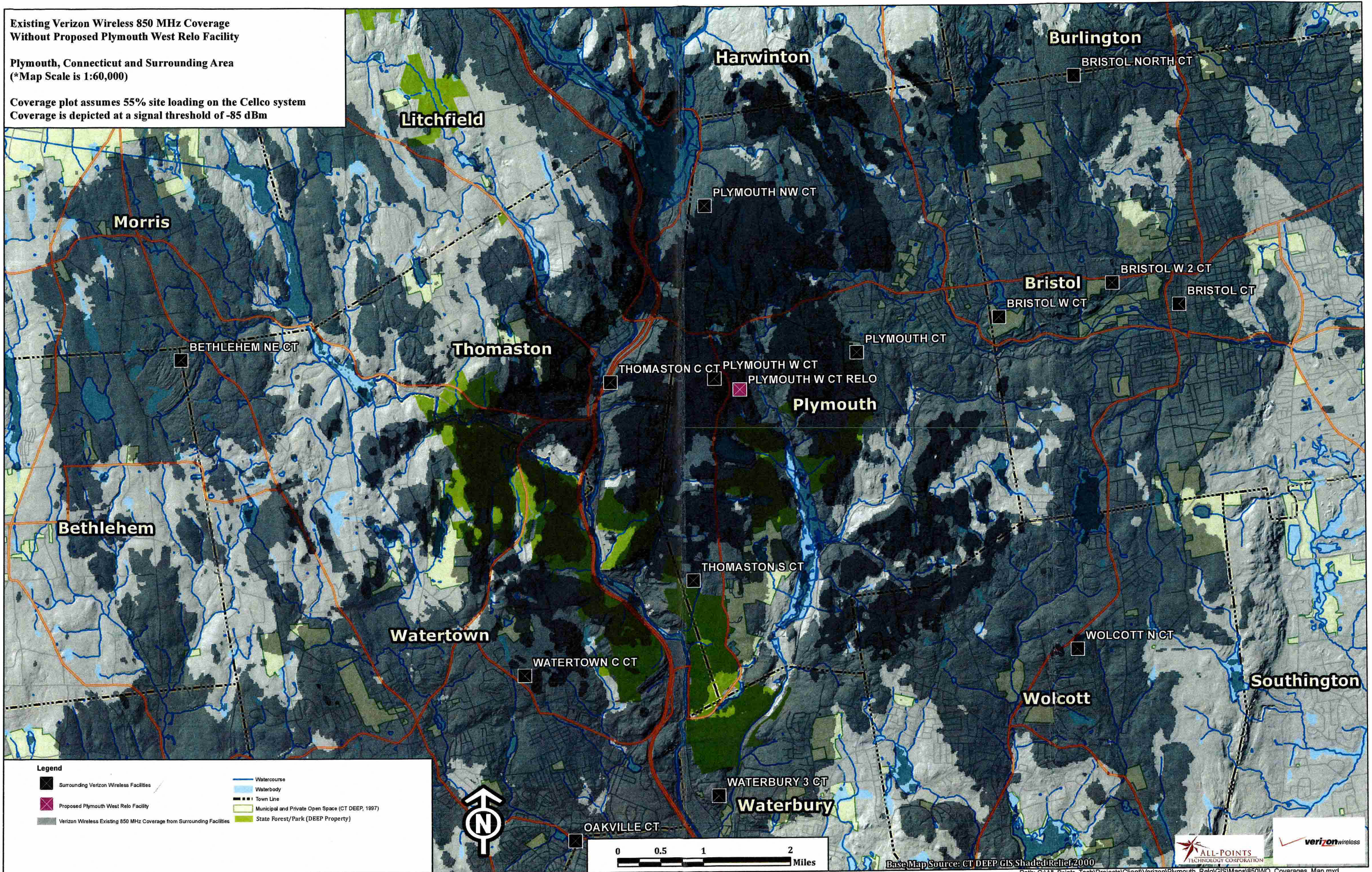


# **ATTACHMENT 1**

**Existing Verizon Wireless 850 MHz Coverage  
Without Proposed Plymouth West Relo Facility**

**Plymouth, Connecticut and Surrounding Area  
(\*Map Scale is 1:60,000)**

**Coverage plot assumes 55% site loading on the Cellco system  
Coverage is depicted at a signal threshold of -85 dBm**

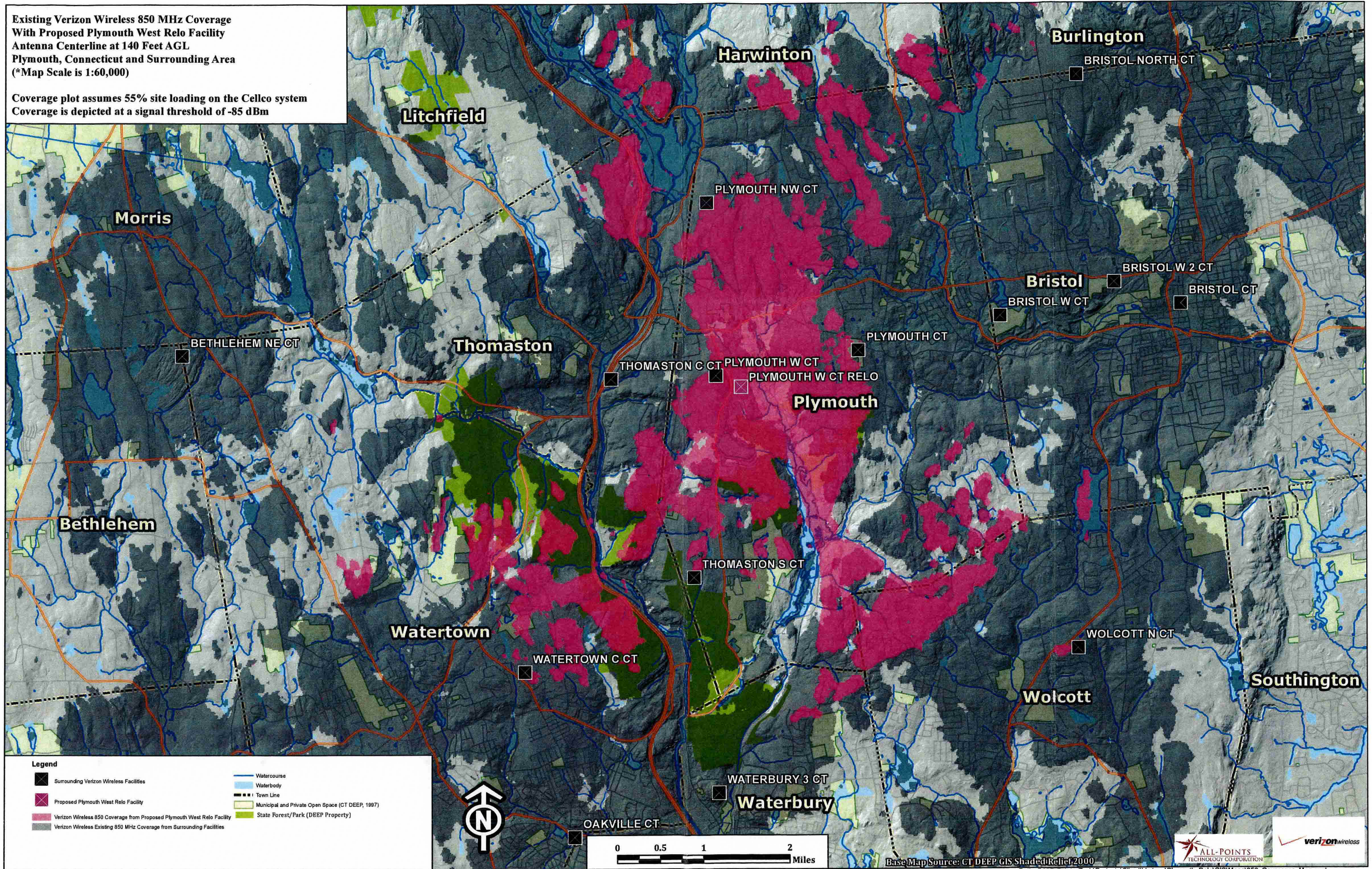


Base Map Source: CT DEEP GIS Shaded Relief 2000



**Existing Verizon Wireless 850 MHz Coverage  
With Proposed Plymouth West Relo Facility  
Antenna Centerline at 140 Feet AGL  
Plymouth, Connecticut and Surrounding Area  
(\*Map Scale is 1:60,000)**

Coverage plot assumes 55% site loading on the Cellco system  
Coverage is depicted at a signal threshold of -85 dBm



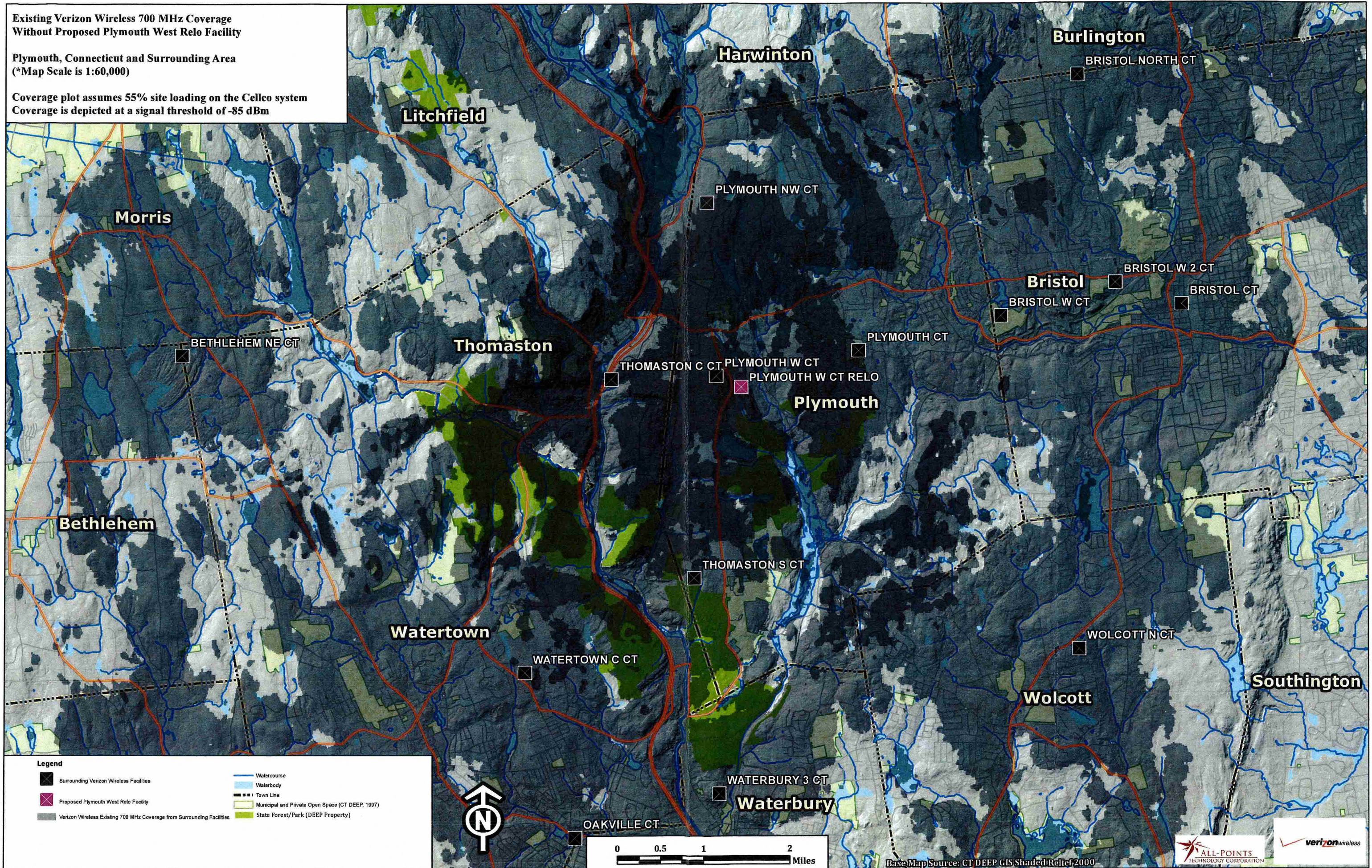
- Legend**
- Surrounding Verizon Wireless Facilities
  - Proposed Plymouth West Relo Facility
  - Verizon Wireless 850 Coverage from Proposed Plymouth West Relo Facility
  - Verizon Wireless Existing 850 MHz Coverage from Surrounding Facilities
  - Watercourse
  - Waterbody
  - Town Line
  - Municipal and Private Open Space (CT DEEP, 1997)
  - State Forest/Park (DEEP Property)



**Existing Verizon Wireless 700 MHz Coverage  
Without Proposed Plymouth West Relo Facility**

**Plymouth, Connecticut and Surrounding Area  
(\*Map Scale is 1:60,000)**

**Coverage plot assumes 55% site loading on the Cellco system  
Coverage is depicted at a signal threshold of -85 dBm**



**Legend**

- Surrounding Verizon Wireless Facilities
- Proposed Plymouth West Relo Facility
- Verizon Wireless Existing 700 MHz Coverage from Surrounding Facilities
- Watercourse
- Waterbody
- Town Line
- Municipal and Private Open Space (CT DEEP, 1997)
- State Forest/Park (DEEP Property)

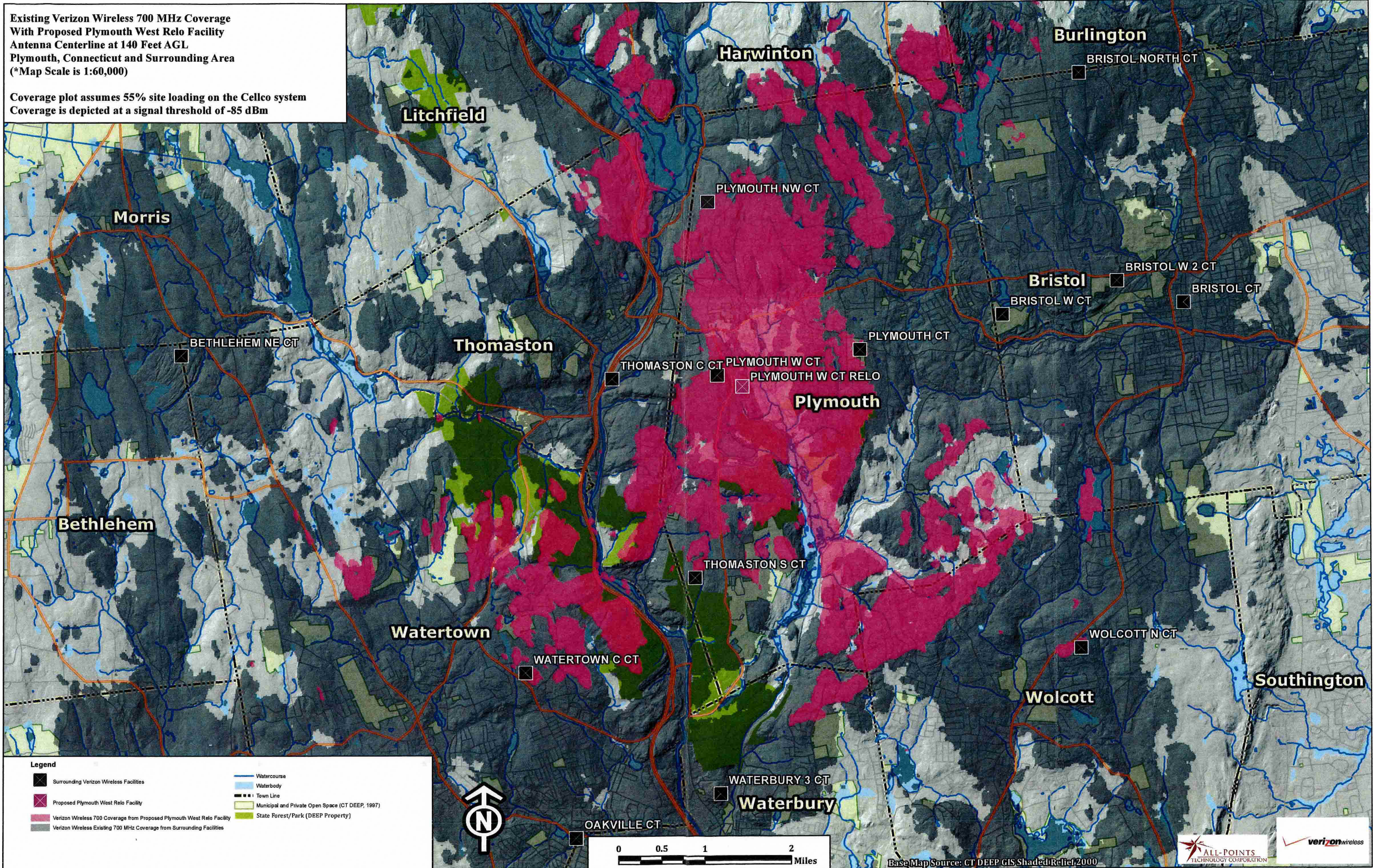


Base Map Source: CT DEEP GIS Shaded Relief 2000



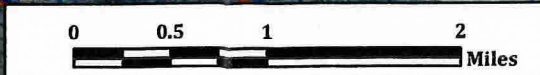
Existing Verizon Wireless 700 MHz Coverage  
 With Proposed Plymouth West Relo Facility  
 Antenna Centerline at 140 Feet AGL  
 Plymouth, Connecticut and Surrounding Area  
 (\*Map Scale is 1:60,000)

Coverage plot assumes 55% site loading on the Cellco system  
 Coverage is depicted at a signal threshold of -85 dBm



**Legend**

	Surrounding Verizon Wireless Facilities		Watercourse
	Proposed Plymouth West Relo Facility		Waterbody
	Verizon Wireless 700 MHz Coverage from Proposed Plymouth West Relo Facility		Town Line
	Verizon Wireless Existing 700 MHz Coverage from Surrounding Facilities		Municipal and Private Open Space (CT DEEP, 1997)
			State Forest/Park (DEEP Property)



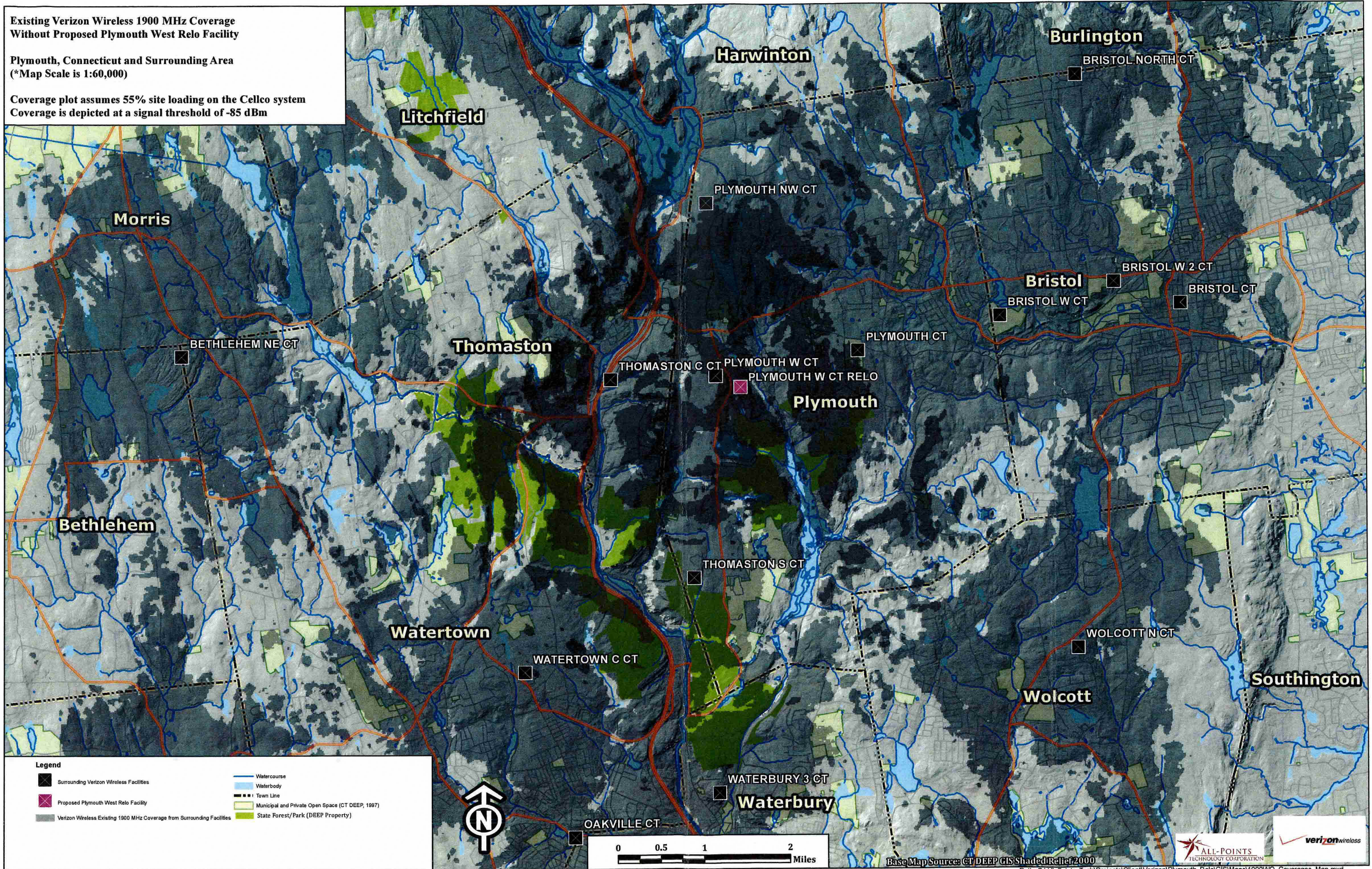
Base Map Source: CT DEEP GIS Shaded Relief 2000



**Existing Verizon Wireless 1900 MHz Coverage  
Without Proposed Plymouth West Relo Facility**

**Plymouth, Connecticut and Surrounding Area  
(\*Map Scale is 1:60,000)**

**Coverage plot assumes 55% site loading on the Celco system  
Coverage is depicted at a signal threshold of -85 dBm**



**Legend**

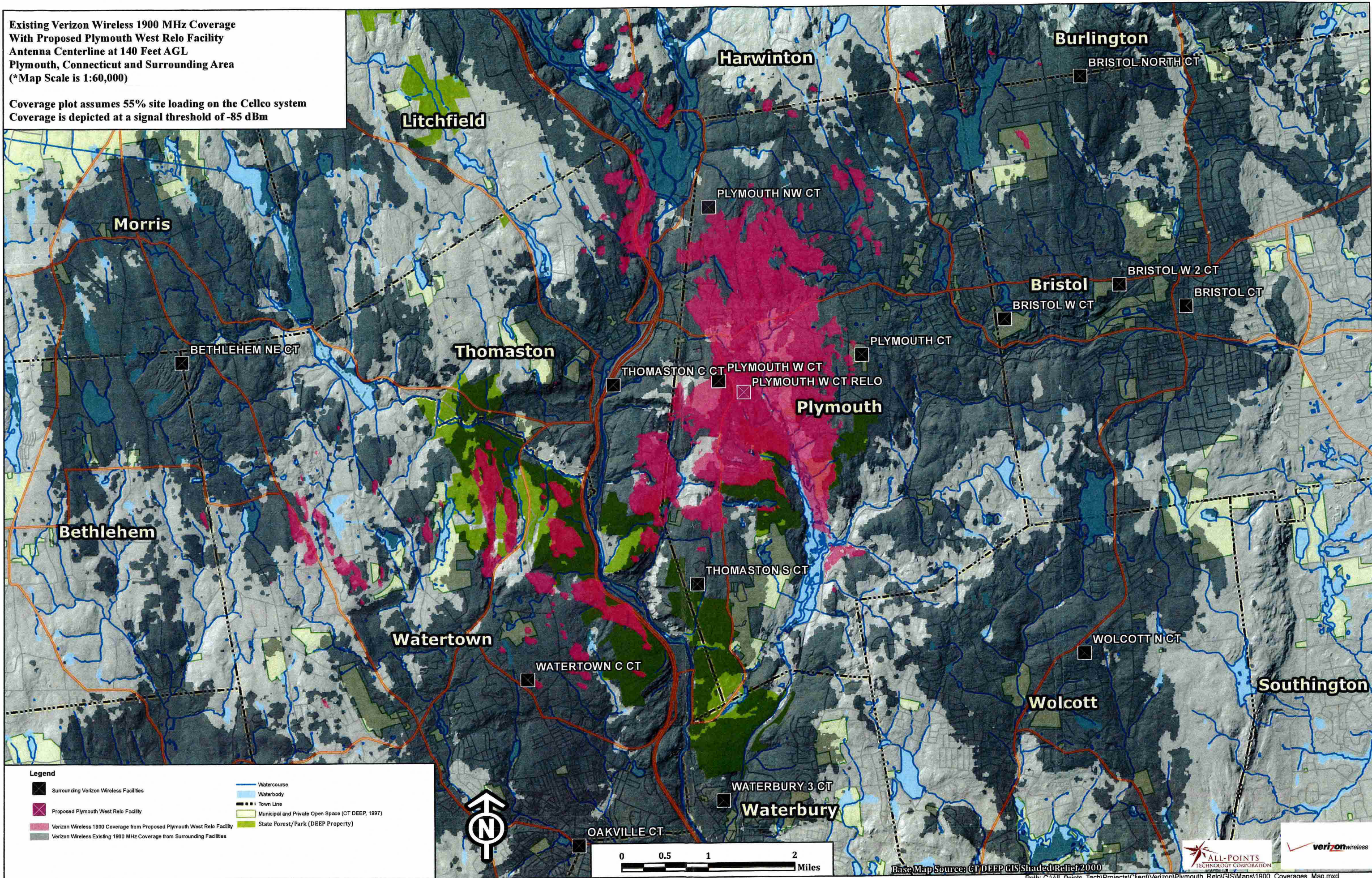
-  Surrounding Verizon Wireless Facilities
-  Proposed Plymouth West Relo Facility
-  Verizon Wireless Existing 1900 MHz Coverage from Surrounding Facilities
-  Watercourse
-  Waterbody
-  Town Line
-  Municipal and Private Open Space (CT DEEP, 1997)
-  State Forest/Park (DEEP Property)

Base Map Source: CT DEEP GIS Shaded Relief 2000

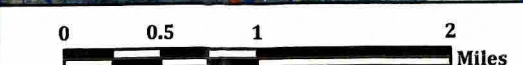
Path: C:\All\_Points\_Tech\Projects\Client\Verizon\Plymouth\_Relo\GIS\Maps\1900WO\_Coverages\_Map.mxd

Existing Verizon Wireless 1900 MHz Coverage  
 With Proposed Plymouth West Relo Facility  
 Antenna Centerline at 140 Feet AGL  
 Plymouth, Connecticut and Surrounding Area  
 (\*Map Scale is 1:60,000)

Coverage plot assumes 55% site loading on the Cellco system  
 Coverage is depicted at a signal threshold of -85 dBm



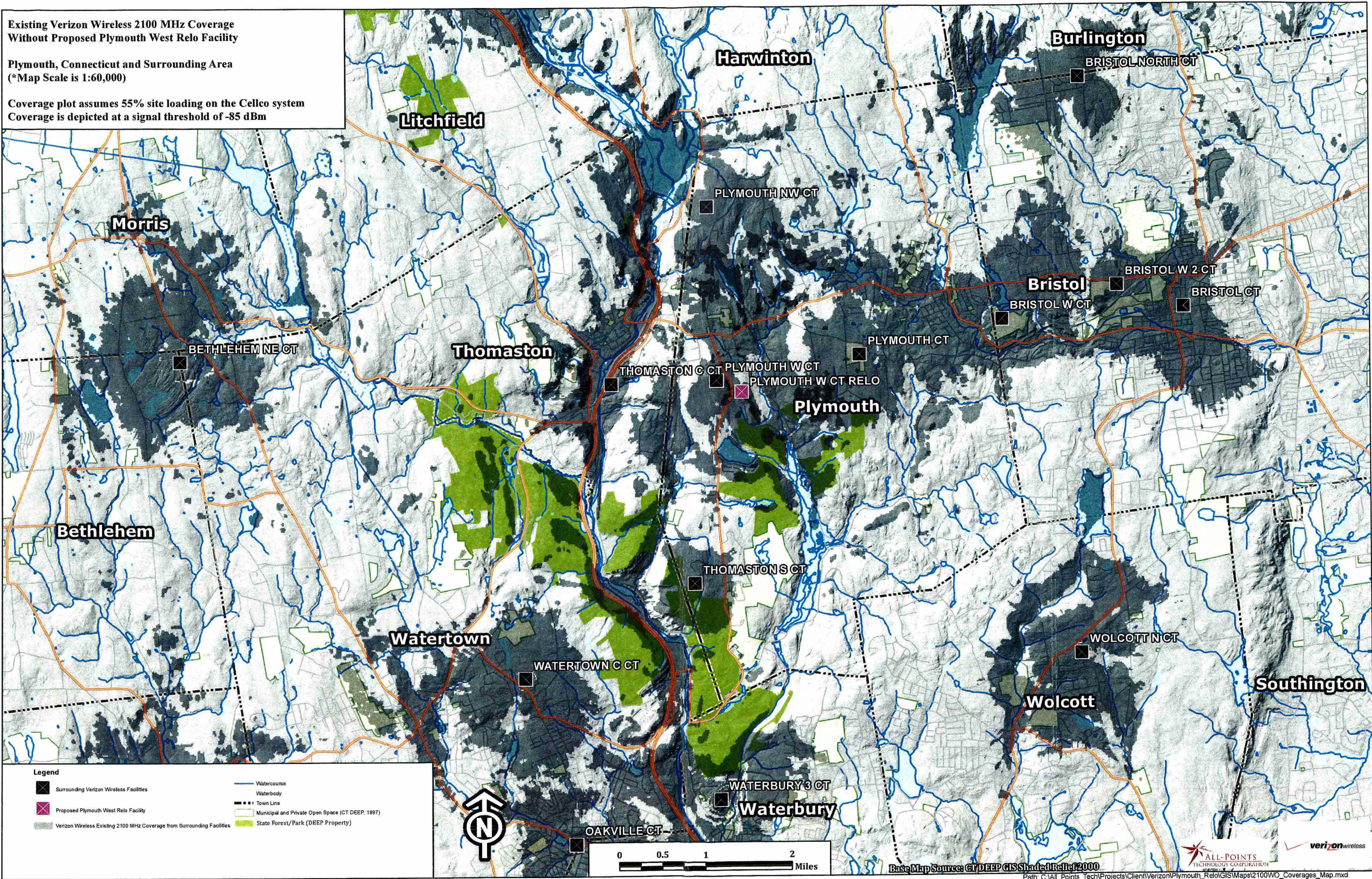
- Legend**
- Surrounding Verizon Wireless Facilities
  - Proposed Plymouth West Relo Facility
  - Verizon Wireless 1900 Coverage from Proposed Plymouth West Relo Facility
  - Verizon Wireless Existing 1900 MHz Coverage from Surrounding Facilities
  - Watercourse
  - Waterbody
  - Town Line
  - Municipal and Private Open Space (CT DEEP, 1997)
  - State Forest/Park (DEEP Property)



**Existing Verizon Wireless 2100 MHz Coverage Without Proposed Plymouth West Relo Facility**

**Plymouth, Connecticut and Surrounding Area**  
 (\*Map Scale is 1:60,000)

Coverage plot assumes 55% site loading on the Cellco system  
 Coverage is depicted at a signal threshold of -85 dBm



**Legend**

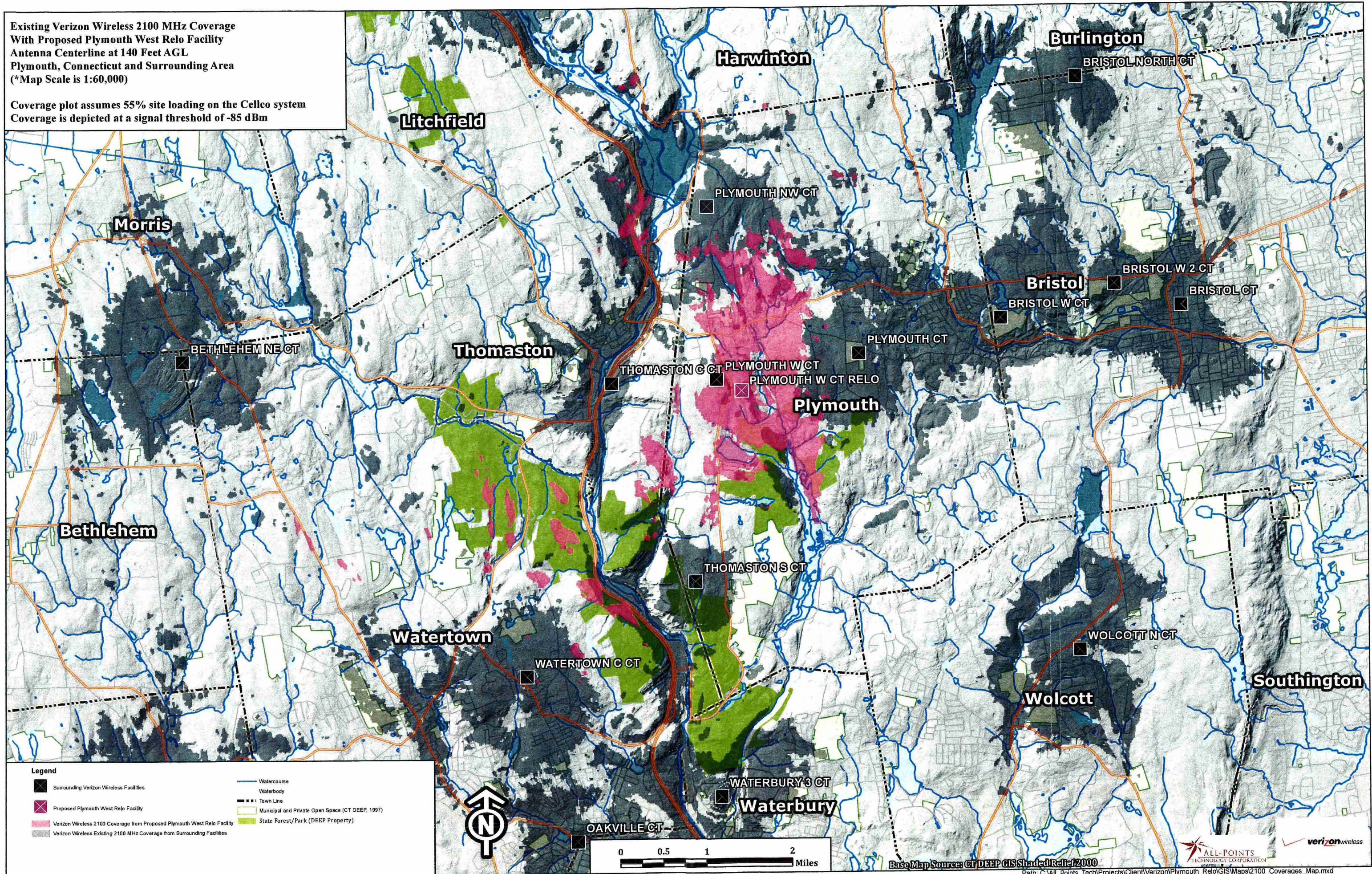
- Surrounding Verizon Wireless Facilities
- Proposed Plymouth West Relo Facility
- Verizon Wireless Existing 2100 MHz Coverage from Surrounding Facilities
- Watercourse
- Waterbody
- Town Line
- Municipal and Private Open Space (CT DEEP, 1997)
- State Forest/Park (DEEP Property)





Existing Verizon Wireless 2100 MHz Coverage  
 With Proposed Plymouth West Relo Facility  
 Antenna Centerline at 140 Feet AGL  
 Plymouth, Connecticut and Surrounding Area  
 (\*Map Scale is 1:60,000)

Coverage plot assumes 55% site loading on the Celco system  
 Coverage is depicted at a signal threshold of -85 dBm



- Legend**
- Surrounding Verizon Wireless Facilities
  - Proposed Plymouth West Relo Facility
  - Verizon Wireless 2100 Coverage from Proposed Plymouth West Relo Facility
  - Verizon Wireless Existing 2100 MHz Coverage from Surrounding Facilities
  - Watercourse
  - Waterbody
  - Town Line
  - Municipal and Private Open Space (CT DEEP, 1997)
  - State Forest/Park (DEEP Property)



Base Map Source: CT DEEP GIS Shaded Relief 2000

