

KENNETH C. BALDWIN

280 Trumbull Street
Hartford, CT 06103-3597
Main (860) 275-8200
Fax (860) 275-8299
kbaldwin@rc.com
Direct (860) 275-8345

Also admitted in Massachusetts

April 28, 2016

Melanie A. Bachman
Acting Executive Director
Connecticut Siting Council
10 Franklin Square
New Britain, CT 06051

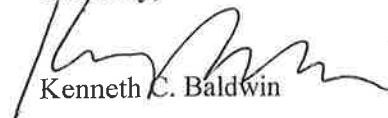
Re: **Docket No. 455 Application of Celco Partnership d/b/a Verizon Wireless For A Certificate of Environmental Compatibility and Public Need For The Construction Of Wireless Cellular Communications Facility At 99 East Street, Southington, Connecticut, Development And Management Plan Revisions**

Dear Ms. Bachman:

Since the Siting Council's approval of the Docket No. 455 Development and Management ("D&M") Plan on August 6, 2015, Verizon has modified its facility equipment installation plan for the proposed East Street telecommunications facility in Southington. In lieu of a 12-foot x 26-foot shelter, Verizon will install equipment cabinets and a backup generator on a 12-foot x 26-foot steel equipment platform at the same location within the facility compound. The platform, equipment, cabinets and generator will be located beneath a steel canopy structure. These revisions are reflected in the attached D&M Plans, Rev 4, dated April 26, 2016.

Please feel free to contact me if you have any questions or need any information regarding this facility.

Sincerely,



Kenneth C. Baldwin

/kmt

Enclosures

Copy to:

Mark Sciota, Deputy Town Manager
and Town Attorney for the Town of Southington

14735180-v1

ESTIMATED TREE REMOVAL SUMMARY	
TREES PROPOSED TO BE REMOVED IN LOCATION ALONG PROPOSED CELCO PARTNERSHIP ACCESS OR UTILITY EASEMENT	= 0
TREES PROPOSED TO BE REMOVED WITHIN AND AROUND THE PROPOSED CELCO PARTNERSHIP LEASE AREA	= 4
TOTAL TREES PROPOSED TO BE REMOVED	= 4

SYMBOLS LEGEND	
	PROPERTY LINE
	EASEMENT LINE (PROPOSED)
	EXISTING ROAD
	ACCESS DRIVE (PROPOSED)
	CONTOUR LINE
	GRADING LINE
	UTILITY POLE
	EXISTING DECIDUOUS TREE
	EXISTING CONIFEROUS TREE
	EXISTING DECIDUOUS TREE TO BE REMOVED
	EXISTING CONIFEROUS TREE TO BE REMOVED
	SILTATION FENCE/ STRAW BALES/ SILTATION FENCE "SANDWICH"
	FENCE LINE
	SPOT ELEVATION (PROPOSED)
	WETLAND BOUNDARY
	SILTATION FENCE

SURVEY NOTES

THIS SURVEY AND MAP HAS BEEN PREPARED IN ACCORDANCE WITH SECTIONS 20-300B-1 THRU 20-300B-20 OF THE REGULATIONS OF CONNECTICUT STATE AGENCIES - "MINIMUM STANDARDS FOR SURVEYS AND MAPS IN THE STATE OF CONNECTICUT" AS ENDORSED BY THE CONNECTICUT ASSOCIATION OF LAND SURVEYORS, INC. ON SEPT. 26, 1996. THE TOPOGRAPHIC SURVEY PORTION OF THIS PLAN CONFORMS TO A VERTICAL ACCURACY OF CLASS T-2 AND IS INTENDED TO BE USED TO DEPICT A PROPOSED TELECOMMUNICATION SITE.

THE PROPERTY/BOUNDARY LINES DEPICTED HEREON ARE COMPILED FROM OTHER MAPS, DEEDS AND LIMITED FIELD SURVEY. THESE LINES ARE NOT TO BE CONSTRUED AS A BOUNDARY OPINION AND ARE SUBJECT TO CHANGE AS AN ACCURATE FIELD SURVEY MAY DISCLOSE. PROPERTY MAY BE SUBJECT TO ENCUMBRANCES, EASEMENTS, RIGHTS OF WAY AS A TITLE SEARCH REPORT MAY DISCLOSE.

COORDINATES BASED ON CONNECTICUT GRID SYSTEM NAD 83.
ELEVATIONS REFER TO AN NGVD 1929 DATUM.
PARCEL OWNER OF RECORD: TOWN OF SOUTHTONINGTON.
PARCELS KNOWN AS 99 EAST STREET, SOUTHTONINGTON, CT.
MBL 06/8/053
PARCEL AREA = 27± ACRES

A PORTION OF THE PARCEL IS IN FLOOD ZONE AE BASED ON THE FLOOD INSURANCE RATE MAP, HARTFORD COUNTY, CONNECTICUT, ALL JURISDICTIONS, PANELS 603 OF 675, COMMUNITY MAP NUMBER 0900C0465J & 0900C0603F, EFFECTIVE DATE SEPTEMBER 26, 2008, BY FEDERAL EMERGENCY MANAGEMENT AGENCY.

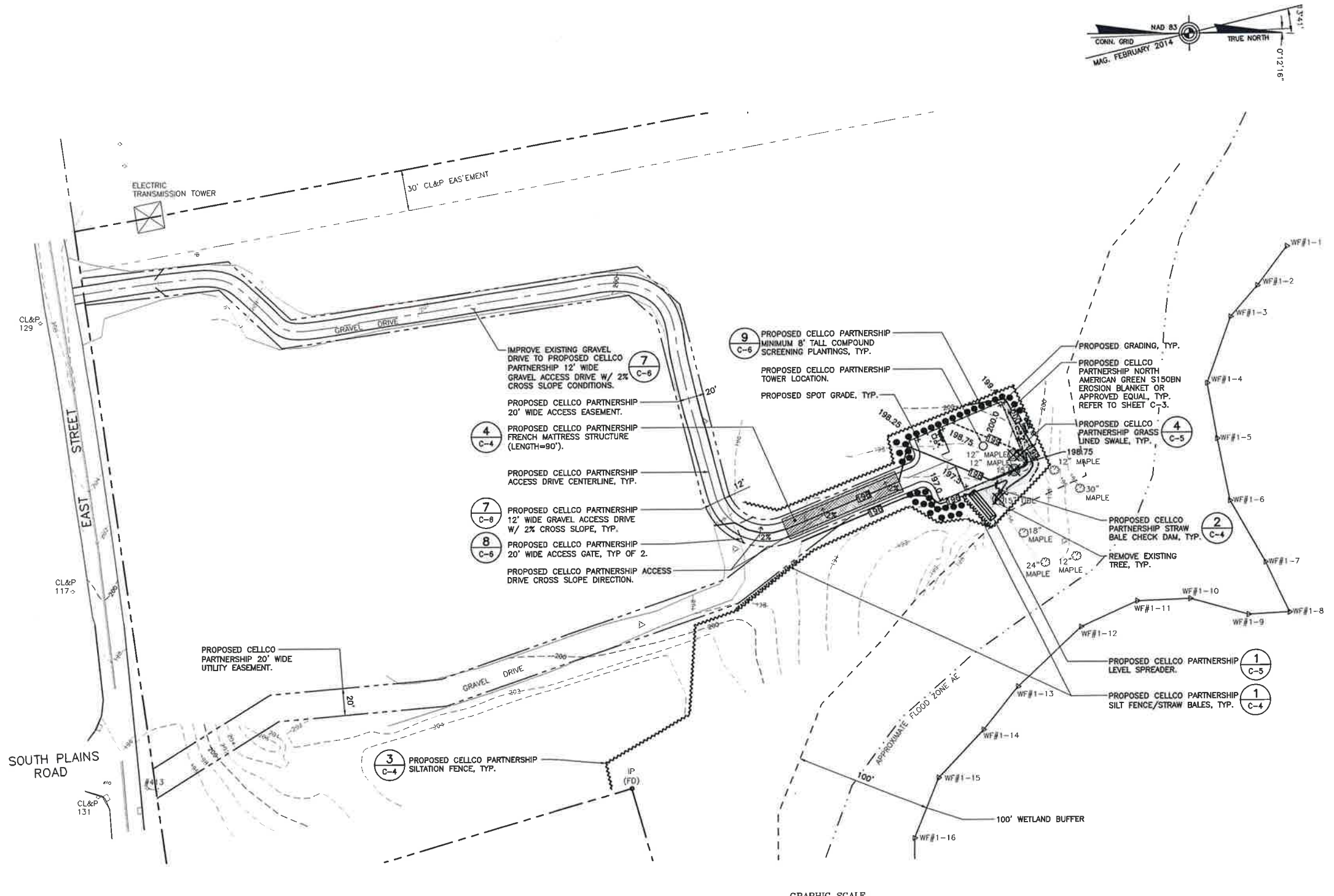
PARCEL IS SUBJECT TO UTILITY EASEMENT TO THE CONNECTICUT LIGHT & POWER COMPANY AS DEPICTED HEREON.

ALL IMPROVEMENTS ARE NOT SHOWN.

MAP REFERENCE

1) MAP OF THE LEWIS FARM, BELLEVUE AVENUE - MERIDEN AVENUE - EAST STREET, SOUTHTONINGTON, CONN., SCALE 1"=100', DATED OCTOBER 24, 1980, REVISED THROUGH JULY 22, 1992, BY RUSSELL S. ANDRES.

TO MY KNOWLEDGE AND BELIEF THIS MAP IS SUBSTANTIALLY CORRECT AS NOTED HEREON
THIS MAP IS NOT VALID WITHOUT A LIVE SIGNATURE AND SEAL

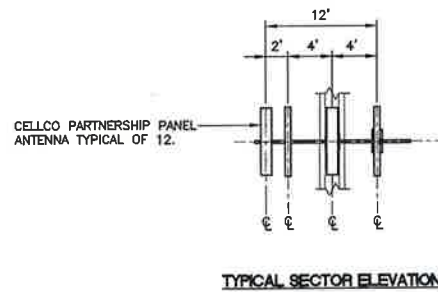
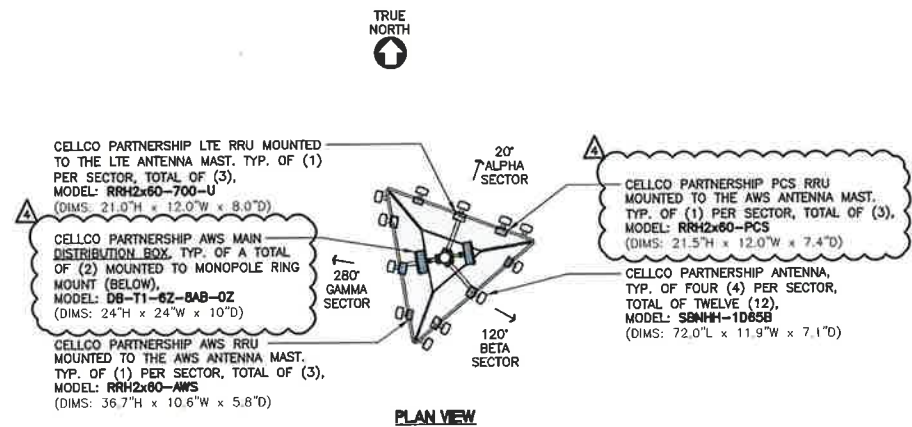


1 PARTIAL SITE PLAN
SCALE: 1"=40'
GRAPHIC SCALE
(IN FEET)
1 inch = 40 ft.

A. RAFAEL MARTINEZ LLS #18833 DATE

Cellco Partnership d/b/a Verizon Wireless	
CENEX Consulting Engineers	
(203) 469-0380 1530 North Main Road Southington, CT 06488 www.CenexEng.com	
Cellco Partnership d/b/a Verizon Wireless WIRELESS COMMUNICATIONS FACILITY SOUTHTONINGTON - EAST STREET 99 EAST STREET SOUTHTONINGTON, CT 06488	
DATE:	05/18/15
SCALE:	AS NOTED
JOB NO.	14035.000
PARTIAL SITE PLAN	
<h1>C-1</h1>	
Sheet No. 2	of 9

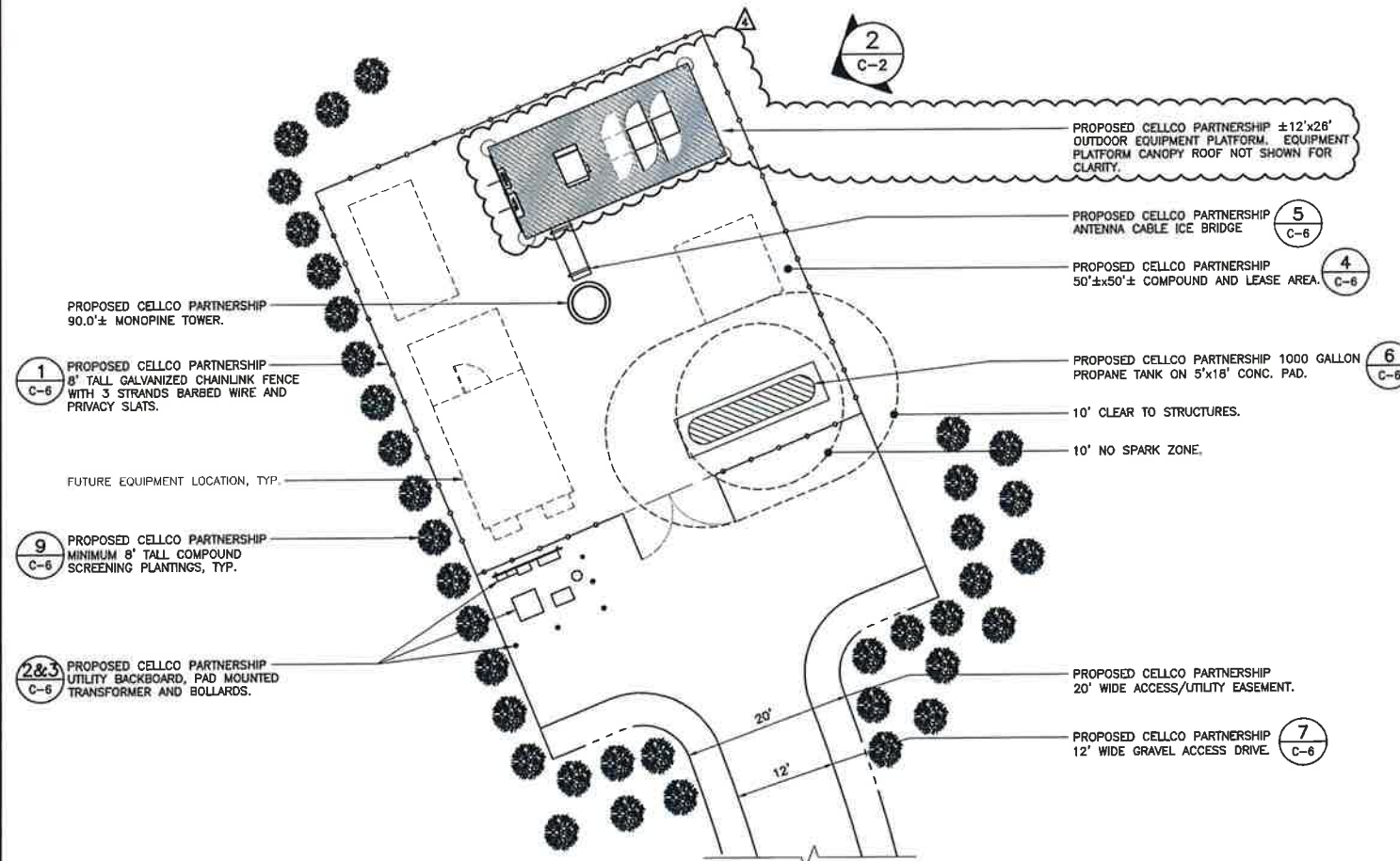
REV.	DATE	BY	DESCRIPTION
3	06/06/15	HMR	REVISION DAM PLANS - SILT FENCE EXTENSION FOR TURTLE PROTECTION
2	06/22/15	HMR	REVISION DAM PLANS - ACCESS DRIVE ADJUSTMENT PER TOWN COMMENTS
1	05/29/15	HMR	DAM PLANS
0	05/18/15	HMR	DAM PLANS - ISSUED FOR CLIENT REVIEW



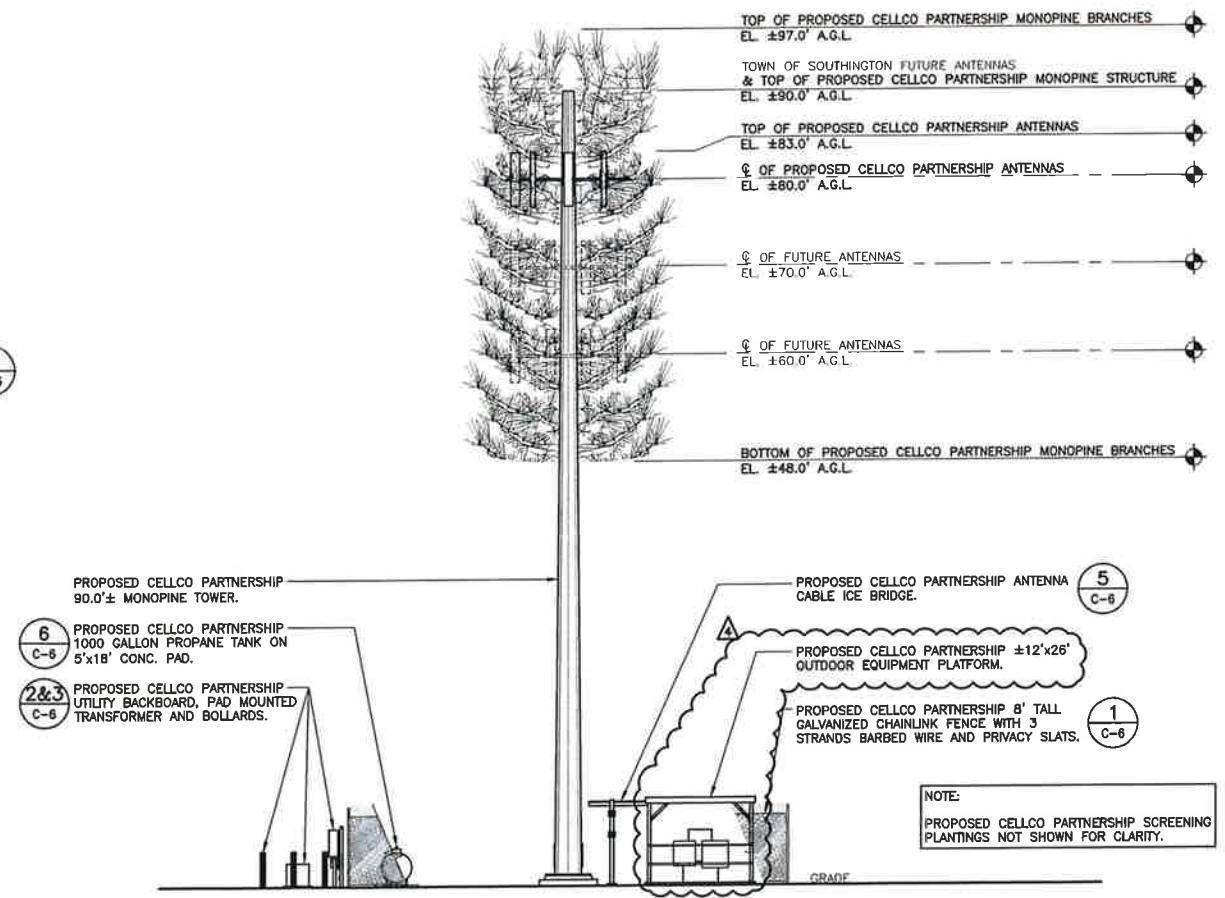
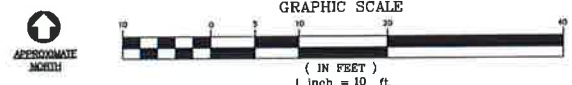
3 ANTENNA MOUNTING CONFIGURATION
C-2 NOT TO SCALE

TOWER AND GEOTECH NOTES:

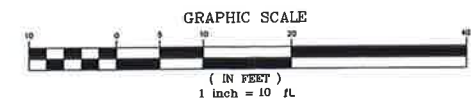
- 90' TALL MONOPOLE TOWER STRUCTURE DESIGNED AND MANUFACTURED BY ENGINEERED ENDEAVORS, INC.
- REFER TO STRUCTURAL DESIGN ANALYSIS OF TOWER AND TOWER FOUNDATION AS PREPARED BY ENGINEERED ENDEAVORS, INC. DATED 02/11/15 (REV. 1) PROJECT NUMBER: 17382.
- REFER TO GEOTECHNICAL EVALUATION AS PREPARED BY DESIGN EARTH TECHNOLOGY (DET), DATED DECEMBER 13, 2014. DET JOB NO. 2014.21.



1 COMPOUND PLAN
C-2 SCALE: 1" = 10'



2 EAST ELEVATION
C-2 SCALE: 1" = 10'



REV.	DATE	DRAWN BY	CHK'D BY	DESCRIPTION
4	04/29/15	JTD		REVISED DAM PLANS - OUTDOOR EQUIPMENT IN LIEU OF EQUIP. SHELTER
3	08/06/15	HMR		REVISED DAM PLANS - SILT FENCE EXTENSION FOR TURTLE PROTECTION
2	09/22/15	HMR		REVISED DAM PLANS - ACCESS DRIVE ADJUSTMENT PER TOWN COMMENTS
1	05/29/15	HMR		DAM PLANS
0	05/19/15	HMR		DAM PLANS - ISSUED FOR CLIENT REVIEW

PROFESSIONAL ENGINEER SEAL

Cellco Partnership
d.b.a. Verizon Wireless

CEN TEK engineering
Centered on Solutions™
203) 488-0390
203) 488-6397 Fax
43-2 North Branford Road
Branford, CT 06405
www.censtek.com

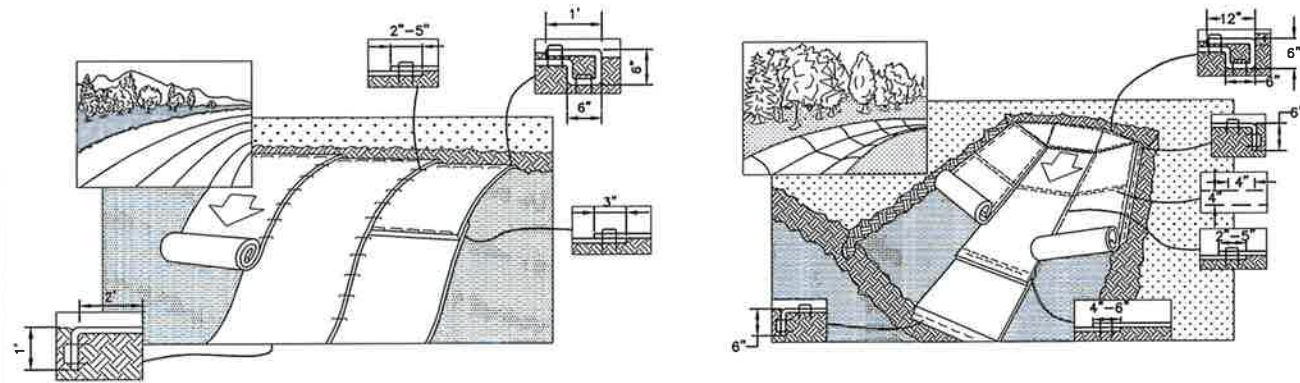
Cellco Partnership d/b/a Verizon Wireless
WIRELESS COMMUNICATIONS FACILITY
SOUTHWINGTON - EAST STREET
89 EAST STREET
SOUTHWINGTON, CT 06489

DATE: 05/18/15
SCALE: AS NOTED
JOB NO. 14035.000

COMPOUND PLAN, ELEVATION AND ANTENNA MOUNTING CONFIG.

C-2
Sheet No. 4 of 9

EROSION CONTROL BLANKET STABILIZATION



1 TYPICAL EROSION MAT INSTALLATION ON SLOPE
C-3 NOT TO SCALE

2 TYPICAL EROSION MAT INSTALLATION IN CHANNEL
C-3 NOT TO SCALE

STABILIZATION CRITERIA

- CONTRACTOR SHALL IMPLEMENT EROSION CONTROL BLANKET SLOPE STABILIZATION & SWALE CONSTRUCTION WHEN STABLE EARTH CUTS ARE PREVALENT (IN LOCATIONS WITHOUT LEDGE OR LARGE AMOUNTS OF SUBGRADE ROCK)

STABILIZATION PRODUCT SPECIFICATION

NORTH AMERICAN GREEN, PRODUCT NUMBER S150BN, 12 MONTH BIODEGRADABLE.

EROSION MAT ON SLOPES

- PREPARE SOIL BEFORE INSTALLING BLANKETS, INCLUDING ANY NECESSARY APPLICATION OF LIME, FERTILIZER, AND SEED.
NOTE: WHEN USING CELL-O-SEED DO NOT SEED PREPARED AREA. CELL-O-SEED MUST BE INSTALLED WITH PAPER SIDE DOWN.
- BEGIN AT THE TOP OF THE SLOPE BY ANCHORING THE BLANKET IN A 6" DEEP BY 6" WIDE TRENCH WITH APPROXIMATELY 12" OF BLANKET EXTENDED BEYOND THE UP-SLOPE PORTION OF THE TRENCH. ANCHOR THE BLANKET WITH A ROW OF STAPLES/STAKES APPROXIMATELY 12" APART IN THE BOTTOM OF THE TRENCH. BACKFILL AND COMPACT THE TRENCH AFTER STAPLING. APPLY SEED TO COMPACTED SOIL AND FOLD REMAINING 12" PORTION OF BLANKET BACK OVER SEED AND COMPACTED SOIL. SECURE BLANKET OVER COMPACTED SOIL WITH A ROW OF STAPLE/STAKES SPACED APPROXIMATELY 12" APART ACROSS THE WIDTH OF THE BLANKET.
- ROLL THE BLANKET DOWN OR HORIZONTALLY ACROSS THE SLOPE. BLANKET WILL UNROLL WITH APPROPRIATE SIDE AGAINST THE SOIL SURFACE. ALL ROLLED EROSION CONTROL BLANKETS MUST BE SECURELY FASTENED TO SOIL SURFACE BY PLACING STAPLES/STAKES IN APPROPRIATE LOCATIONS AS SHOWN IN THE STAPLE PATTERN GUIDE. WHEN USING THE DOT SYSTEM[™], STAPLES/STAKES SHOULD BE PLACED THROUGH EACH OF THE COLORED DOTS CORRESPONDING TO THE APPROPRIATE STAPLE PATTERN.
- THE EDGES OF PARALLEL BLANKETS MUST BE STAPLED WITH APPROXIMATELY A 2"-5" OVERLAP DEPENDING ON BLANKET TYPE.
- CONSECUTIVE ROLLED EROSION CONTROL BLANKET SPICED DOWN THE SLOPE MUST BE PLACED END OVER END (SINGLE STYLE) WITH AN APPROXIMATE 3" OVERLAP. STAPLE THROUGH OVERLAPPED AREA, APPROXIMATELY 12" APART ACROSS ENTIRE BLANKET WIDTH.
* IN LOOSE SOIL CONDITIONS, THE USE OF STAPLE OR STAKE LENGTHS GREATER THAN 6" MAY BE NECESSARY TO PROPERLY SECURE THE BLANKET.
- THE EDGE OF THE BLANKET IS TO EXTEND A MINIMUM 24 INCHES BEYOND THE TOE OF THE SLOPE AND ANCHORED BY PLACING THE STAPLES/STAKES IN A 12 INCH DEEP x 6 INCH WIDE ANCHOR TRENCH. ANCHOR THE BLANKET WITH A ROW OF STAPLES/STAKES SPACED APPROXIMATELY 12 INCH APART IN THE TRENCH. BACKFILL AND COMPACT THE TRENCH AFTER STAPLING (STONE OR SOIL MAY BE USED AS BACKFILL).
- REFER TO MANUFACTURERS STAPLE GUIDE FOR CORRECT STAPLE PATTERN. MINIMUM 4 SPIKES PER ONE SQ. FT.

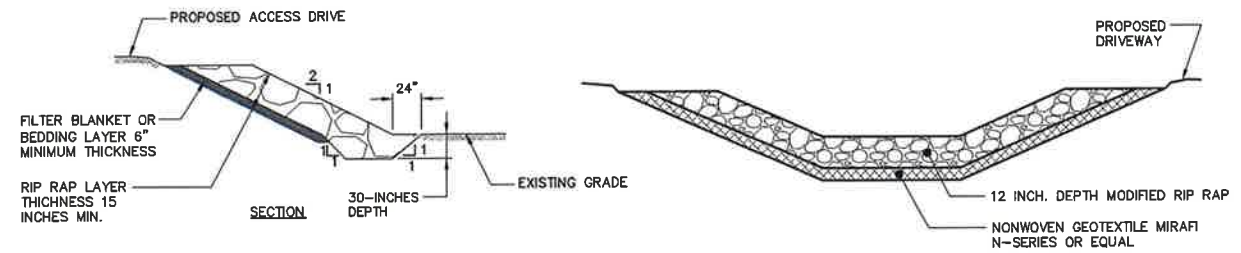
EROSION MAT IN CHANNEL

- PREPARE SOIL BEFORE INSTALLING BLANKETS, INCLUDING ANY NECESSARY APPLICATION OF LIME, FERTILIZER, AND SEED.
- BEGIN AT THE TOP OF THE CHANNEL BY ANCHORING THE BLANKET IN A 6" DEEP BY 6" WIDE TRENCH WITH APPROXIMATELY 12" OF BLANKET EXTENDED BEYOND THE UP-SLOPE PORTION OF THE TRENCH. ANCHOR THE BLANKET WITH A ROW OF STAPLES/STAKES APPROXIMATELY 12" APART IN THE BOTTOM OF THE TRENCH. BACKFILL AND COMPACT THE TRENCH AFTER STAPLING. APPLY SEED TO COMPACTED SOIL AND FOLD REMAINING 12" PORTION OF BLANKET BACK OVER SEED AND COMPACTED SOIL. SECURE BLANKET OVER COMPACTED SOIL WITH A ROW OF STAPLE/STAKES SPACED APPROXIMATELY 12" APART ACROSS THE WIDTH OF THE BLANKET.
- ROLL CENTER BLANKET IN DIRECTION OF WATER FLOW IN BOTTOM OF CHANNEL. BLANKETS WILL UNROLL WITH APPROPRIATE SIDE AGAINST THE SOIL SURFACE. ALL BLANKETS MUST BE SECURELY FASTENED TO SOIL SURFACE BY PLACING STAPLES/STAKES IN APPROPRIATE LOCATIONS AS SHOWN IN THE STAPLE PATTERN GUIDE. WHEN USING THE DOT SYSTEM[™], STAPLES/STAKES SHOULD BE PLACED THROUGH EACH OF THE COLORED DOTS CORRESPONDING TO THE APPROPRIATE STAPLE PATTERN.
- PLACE CONSECUTIVE BLANKETS END OVER END (SHINGLE STYLE) WITH A 4"-6" OVERLAP. USE A DOUBLE ROW OF STAPLES STAGGERED 4" APART AND 4" ON CENTER TO SECURE BLANKETS.
- FULL LENGTH EDGE OF BLANKETS AT TOP OF SIDE SLOPES MUST BE ANCHORED WITH A ROW OF STAPLES/STAKES APPROXIMATELY 12" APART IN A 6" DEEP BY 6" WIDE TRENCH. BACKFILL AND COMPACT THE TRENCH AFTER STAPLING.
- ADJACENT BLANKETS MUST BE OVERLAPPED APPROXIMATELY 2"- 5" AND STAPLED TO ENSURE PROPER SEAM ALIGNMENT. PLACE THE EDGE OF THE OVERLAPPING BLANKET (BLANKET BEING INSTALLED ON TOP) EVEN WITH THE COLORED SEAM STITCH[™] ON THE BLANKET BEING OVERLAPPED.
- THE TERMINAL END OF THE BLANKETS MUST BE ANCHORED WITH A ROW OF STAPLES/STAKES APPROXIMATELY 12" APART IN A 6" DEEP BY 6" WIDE TRENCH. BACKFILL AND COMPACT THE TRENCH AFTER STAPLING.
- REFER TO MANUFACTURERS STAPLE GUIDE FOR CORRECT STAPLE PATTERN. MINIMUM 4 SPIKES PER ONE SQ. FT. THE CONTRACTOR SHALL MAINTAIN THE BLANKET UNTIL ALL WORK ON THE CONTRACT HAS BEEN COMPLETED AND ACCEPTED. MAINTENANCE SHALL CONSIST OF THE REPAIR OF AREAS WHERE DAMAGED BY ANY CAUSE. ALL DAMAGED AREAS SHALL BE REPAIRED TO REESTABLISH THE CONDITIONS AND GRADE OF THE SOIL PRIOR TO APPLICATION OF THE COVERING AND SHALL BE REFERTILIZED, RESEED, AND REMULCHED AS DIRECTED.

MAINTENANCE

THE CONTRACTOR SHALL MAINTAIN THE BLANKET UNTIL ALL WORK ON THE CONTRACT HAS BEEN COMPLETED AND ACCEPTED. MAINTENANCE SHALL CONSIST OF THE REPAIR OF AREAS WHERE DAMAGED BY ANY CAUSE. ALL DAMAGED AREAS SHALL BE REPAIRED TO RE-ESTABLISH THE CONDITIONS AND GRADE OF THE SOIL PRIOR TO APPLICATION OF THE COVERING AND SHALL BE REFERTILIZED, RESEED, AND REMULCHED AS DIRECTED.

RIP RAP STABILIZATION



3 RIP RAP SLOPE STABILIZATION
C-3 NOT TO SCALE

4 RIP RAP DRAINAGE SWALE STABILIZATION
C-3 NOT TO SCALE (TYPICAL)

STABILIZATION CRITERIA

- CONTRACTOR SHALL IMPLEMENT RIP RAP SLOPE STABILIZATION & SWALE CONSTRUCTION IN LOCATIONS WHERE LEDGE OR UNSTABLE SUBGRADES WITH LARGE AMOUNTS OF ROCK ARE PREVALENT OR AS SPECIFICALLY INDICATED ON THE PLANS.

RIP RAP ON SLOPES AND CHANNELS

- PREPARE THE SUBGRADE FOR RIP RAP, BEDDING, FILTER OR GEOTEXTILE TO THE REQUIRED LINES AND GRADES. COMPACT ANY FILL REQUIRED IN THE SUBGRADE IN 12-INCHES LIFTS TO 95% OF STANDARD PROCTOR DENSITY. REMOVE BRUSH, TREES, STUMPS, AND OTHER OBJECTIONABLE MATERIAL.
- IMMEDIATELY AFTER SLOPE OR CHANNEL PREPARATION, INSTALL THE FILTER OR BEDDING MATERIALS. SPREAD THE FILTER OR BEDDING MATERIALS IN A UNIFORM LAYER TO THE SPECIFIED DEPTH.
- IMMEDIATELY AFTER PLACEMENT OF THE FILTER BLANKET, BEDDING, PLACE THE RIP RAP TO ITS FULL COURSE THICKNESS IN ONE OPERATION SO THAT IT PRODUCES A DENSE WELL GRADED MASS OF STONE WITH A MINIMUM OF VOIDS. THE DESIRED DISTRIBUTION OF STONES THROUGHOUT THE MASS MAY BE OBTAINED BY SELECTIVE LOADING AT THE QUARRY, CONTROLLED DUMPING OF SUCCESSIVE LOADS DURING THE FINAL PLACING, OR BY A COMBINATION OF THESE METHODS. DO NOT PLACE RIP RAP IN LAYERS OR USE CHUTES OR SIMILAR METHODS TO DUMP THE RIP RAP WHICH ARE LIKELY TO CAUSE SEGREGATION OF THE VARIOUS STONES.
- TAKE CARE NOT TO DISLodge THE UNDERLYING MATERIAL WHEN PLACING THE STONES. WHEN PLACING RIP RAP ON A FILTER FABRIC TAKE CARE NOT TO DAMAGE THE FABRIC. IF DAMAGE OCCURS, REMOVE AND REPLACE THE DAMAGED SHEET. FOR LARGE STONE, 12 INCHES OR GREATER, USE A 6 INCH LAYER OF FILTER OR BEDDING MATERIAL TO PREVENT DAMAGE TO THE MATERIAL FROM PUNCTURE.
- ENSURE THE FINISHED SLOPE OR CHANNEL IS FREE OF POCKETS OF SMALL STONES OR CLUSTERS OF LARGE STONES. HAND PLACING MAY BE NECESSARY TO ACHIEVE THE REQUIRED GRADES AND A GOOD DISTRIBUTION OF STONE SIZES. ENSURE THE FINAL THICKNESS OF THE RIP RAP BLANKET IS WITHIN PLUS OR MINUS 0.25 OF THE SPECIFIED THICKNESS.

MAINTENANCE

VERIZON WIRELESS SHALL PERIODICALLY INSPECT RIP RAP STABILIZED SLOPES & CHANNELS DETERMINE IF HIGH FLOWS HAVE CAUSED SCOUR BENEATH THE RIP RAP OR FILTER BLANKET MATERIALS. REMOVE TREES THAT DEVELOP IN THE PROTECTED SLOPES.

MODIFIED RIP RAP SIZE CHART

STONE SIZE	% OF MASS
10" AND OVER	0
8" TO 10"	30-50
4" TO 8"	30-50
2" TO 4"	20-30
1" TO 2"	10-20
LESS THAN 1"	0-10

Professional Engineer Seal: COMMUNICATIONS FACILITY, SOUTHINGTON, CT 06489

Calico Partnership d/b/a Verizon Wireless

DATE: 05/18/15
SCALE: AS NOTED
JOB NO. 14035.000

S&E CONTROL NOTES & DETAILS

C-3
Sheet No. 3 of 9

ENVIRONMENTAL NOTES: SPOTTED TURTLE AND AQUIFER PROTECTION PROGRAM

SPOTTED TURTLE, A STATE SPECIAL CONCERN SPECIES, IS KNOWN TO OCCUR ON OR WITHIN THE VICINITY OF THE SITE. THE FOLLOWING PROTECTIVE MEASURES SATISFY REQUIREMENTS FROM THE CONNECTICUT DEPARTMENT OF ENERGY & ENVIRONMENTAL PROTECTION (CTDEEP) WILDLIFE DIVISION AND FOLLOW PROTOCOLS DEVELOPED FROM PREVIOUS RARE TURTLE SPECIES CONSULTATIONS AND STATE-APPROVED PROTECTION PLANS. THIS PROTECTION PLAN IS VALID UNTIL DECEMBER 18, 2015. AT WHICH POINT IF CONSTRUCTION HAS NOT BEEN INITIATED, A NEW NATURAL DIVERSITY DATA BASE REVIEW REQUEST FROM CTDEEP IS REQUIRED.

THE PROJECT IS ALSO LOCATED WITHIN THE SOUTHWINGTON WATER DEPARTMENT'S (PWSID #CT1310011) AQUIFER PROTECTION AREA (APA) FOR WELLS #7 AND #8 AS IDENTIFIED BY THE CONNECTICUT DEPARTMENT OF PUBLIC HEALTH'S (DPH). THE SOUTHWINGTON WATER DEPARTMENT AND CONNECTICUT SITING COUNCIL WILL BE NOTICED AT LEAST 48 HOURS IN ADVANCE OF A PRE-CONSTRUCTION MEETING WITH AN INVITATION TO ATTEND. DURING THE PROJECT'S PRE-CONSTRUCTION MEETING, THE CONTRACTOR WILL BE MADE AWARE OF THE SPECIAL PROTECTIVE PRECAUTIONS NOTED ABOVE THAT ARE REQUIRED DUE TO THE PROJECT'S LOCATION IN THE APA. THE FOLLOWING PRECAUTIONS, PROTECTIVE MEASURES, MONITORING AND NOTIFICATIONS TO PROTECT THIS IMPORTANT RESOURCE ARE REQUIRED TO BE ADHERED TO BY THE CONTRACTOR. SOUTHWINGTON WATER DEPARTMENT PERSONNEL WILL BE ALLOWED ACCESS TO THE PROJECT DURING CONSTRUCTION FOR PERIODIC FIELD INSPECTIONS SHOULD THEY DESIRE.

IT IS OF THE UTMOST IMPORTANCE THAT THE CONTRACTOR COMPLIES WITH THE REQUIREMENT FOR THE INSTALLATION OF PROTECTIVE MEASURES AND THE EDUCATION OF ITS EMPLOYEES AND SUBCONTRACTORS PERFORMING WORK ON THE PROJECT SITE DUE TO ITS LOCATION IN AN APA AND IF WORK WILL OCCUR DURING THE SPOTTED TURTLE'S ACTIVE PERIOD (MARCH 1 TO NOVEMBER 15). ALL-POINTS TECHNOLOGY CORPORATION, P.C. (APT) WILL SERVE AS THE ENVIRONMENTAL MONITOR FOR THIS PROJECT TO ENSURE THAT SPOTTED TURTLE AND AQUIFER PROTECTION MEASURES ARE IMPLEMENTED PROPERLY AND WILL PROVIDE AN EDUCATION SESSION ON SPOTTED TURTLE AND SENSITIVE NATURE OF THE UNDERLYING PUBLIC WATER SUPPLY AQUIFER PRIOR TO THE START OF CONSTRUCTION ACTIVITIES. THE CONTRACTOR SHALL CONTACT DEAN GUSTAFSON, SENIOR ENVIRONMENTAL SCIENTIST AT APT, AT LEAST 5 BUSINESS DAYS PRIOR TO THE PRE-CONSTRUCTION MEETING. MR. GUSTAFSON CAN BE REACHED BY PHONE AT (860) 863-1697 EXT. 201 OR VIA EMAIL AT DGUSTAFSON@ALLPOINTSTECH.COM.

THE PROPOSED PROTECTION PROGRAM CONSISTS OF SEVERAL COMPONENTS: ISOLATION OF THE PROJECT PERIMETER; PERIODIC INSPECTION AND MAINTENANCE OF ISOLATION STRUCTURES; EDUCATION OF ALL CONTRACTORS AND SUB-CONTRACTORS PRIOR TO INITIATION OF WORK ON THE SITE; PETROLEUM STORAGE AND SPILL PREVENTION MEASURES; TURTLE PROTECTIVE MEASURES; AND, REPORTING.

1. ISOLATION MEASURES & EROSION AND SEDIMENTATION CONTROLS

- a. PLASTIC NETTING USED IN A VARIETY OF EROSION CONTROL PRODUCTS (I.E., EROSION CONTROL BLANKETS, FIBER ROLLS (WATTLES), REINFORCED SILT FENCE) HAS BEEN FOUND TO ENTANGLE WILDLIFE, INCLUDING REPTILES, AMPHIBIANS, BIRDS AND SMALL MAMMALS. NO PERMANENT EROSION CONTROL PRODUCTS OR REINFORCED SILT FENCE WILL BE USED ON THE VERIZON WIRELESS PROJECT. TEMPORARY EROSION CONTROL PRODUCTS WILL USE EITHER EROSION CONTROL BLANKETS AND FIBER ROLLS COMPOSED OF PROCESSED FIBERS MECHANICALLY BOUND TOGETHER TO FORM A CONTINUOUS MATRIX (NET LESS) OR NETTING COMPOSED OF PLANAR WOVEN NATURAL BIODEGRADABLE FIBER TO AVOID/WHILE ENTANGLEMENT.
- b. INSTALLATION OF EROSION AND SEDIMENTATION CONTROLS (I.E., SILT FENCING), REQUIRED FOR EROSION CONTROL COMPLIANCE AND CREATION OF A BARRIER TO POSSIBLE MIGRATING/DISPERSING HERPETOFAUNA, SHALL BE PERFORMED BY THE CONTRACTOR FOLLOWING CLEARING ACTIVITIES AND PRIOR TO ANY EARTHWORK. THE ENVIRONMENTAL MONITOR WILL INSPECT THE WORK ZONE AREA PRIOR TO AND FOLLOWING EROSION CONTROL BARRIER INSTALLATION TO ENSURE THE AREA IS FREE OF TO ENSURE THE AREA IS FREE OF SPOTTED TURTLES AND SATISFACTORILY INSTALLED. THE INTENT OF THE BARRIER IS TO SEGREGATE THE MAJORITY OF THE WORK ZONE FROM FORAGING/MIGRATING/DISPERSING TURTLES. OFTEN TIMES COMPLETE ISOLATION OF A WORK ZONE IS NOT FEASIBLE DUE TO ACCESSIBILITY NEEDS AND LOCATIONS OF STAGING/MATERIAL STORAGE AREAS, ETC. IN THOSE CIRCUMSTANCES, THE BARRIERS WILL BE POSITIONED TO DEFLECT MIGRATING/DISPERSAL ROUTES AWAY FROM THE WORK ZONE TO MINIMIZE POTENTIAL ENCOUNTERS WITH TURTLES.
- c. THE FENCING WILL CONSIST OF NON-REINFORCED CONVENTIONAL EROSION CONTROL WOVEN FABRIC, INSTALLED APPROXIMATELY SIX INCHES BELOW SURFACE GRADE AND STAKED AT SEVEN TO TEN-FOOT INTERVALS USING FOUR-FOOT OAK STAKES OR APPROVED EQUIVALENT. IN ADDITION TO REQUIRED DAILY INSPECTION BY THE CONTRACTOR, THE FENCING WILL BE INSPECTED FOR TEARS OR BREECHES IN THE FABRIC FOLLOWING INSTALLATION AND AT EITHER ON A WEEKLY OR BIWEEKLY INSPECTION FREQUENCY BY APT. IF INSPECTIONS ARE PERFORMED ON A BIWEEKLY BASIS, SUCH INSPECTIONS WILL ALSO INCLUDE INSPECTIONS FOLLOWING STORM EVENTS OF 0.25 INCH OR GREATER. INSPECTIONS WILL BE CONDUCTED BY APT THROUGHOUT THE COURSE OF THE CONSTRUCTION PROJECT.
- d. THE EXTENT OF THE BARRIER FENCING WILL BE AS SHOWN ON THE SITE PLANS. THE CONTRACTOR SHALL HAVE ADDITIONAL BARRIER FENCING SHOULD FIELD CONDITIONS WARRANT EXTENDING THE FENCING AS DIRECTED BY APT.
- e. NO EQUIPMENT, VEHICLES OR CONSTRUCTION MATERIALS SHALL BE STORED OUTSIDE OF BARRIER FENCING.
- f. ALL SILT FENCING SHALL BE REMOVED WITHIN 30 DAYS OF COMPLETION OF WORK AND PERMANENT STABILIZATION OF SITE SOILS SO THAT REPTILE AND AMPHIBIAN MOVEMENT BETWEEN UPLANDS AND WETLANDS IS NOT RESTRICTED.
- g. EROSION AND SEDIMENTATION CONTROL ITEMS SUBJECT TO INSPECTION INCLUDE, BUT ARE NOT LIMITED TO THE FOLLOWING:
 - CONSTRUCTION ENTRANCE PAD
 - SEDIMENT TRAPS
 - SEDIMENT/ DETENTION BASINS
 - TEMPORARY SOIL STOCKPILE AREAS
 - SILT FENCING/HAY BALES
 - SEEDING & MULCHING
 - DRAINAGE SWALES
 - DRAINAGE SWALE CHECK DAMS
 - OTHER SITE-SPECIFIC EROSION CONTROL DEVICES

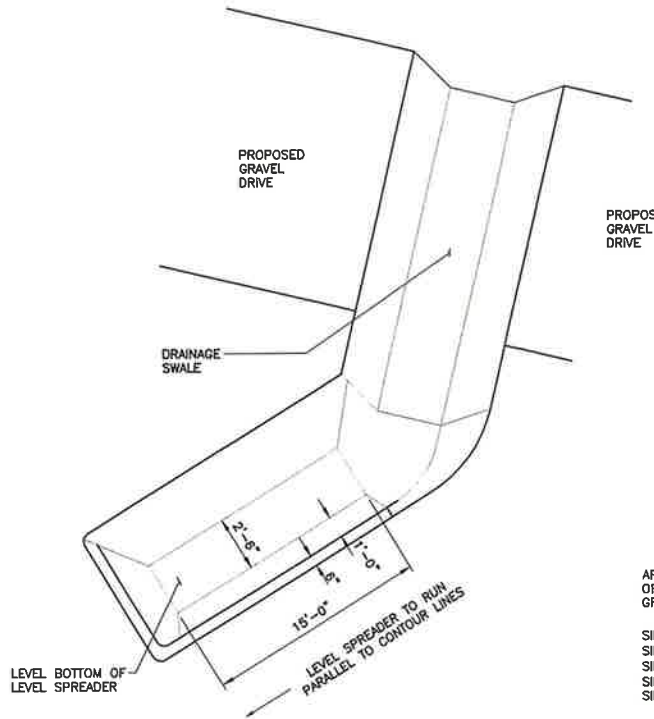
2. CONTRACTOR EDUCATION

- a. PRIOR TO WORK ON SITE, THE CONTRACTOR SHALL ATTEND AN EDUCATIONAL SESSION AT THE PRE-CONSTRUCTION MEETING WITH APT. THIS ORIENTATION AND EDUCATIONAL SESSION WILL CONSIST OF AN INTRODUCTORY MEETING WITH APT PROVIDING PHOTOS OF SPOTTED TURTLES AND EMPHASIZING THE NON-AGGRESSIVE NATURE OF THESE TURTLES. THE ABSENCE OF NEED TO DESTROY ANIMALS THAT MIGHT BE ENCOUNTERED AND THE NEED TO FOLLOW PROTECTIVE MEASURES AS DESCRIBED IN SECTION 4 BELOW. WORKERS WILL ALSO BE PROVIDED INFORMATION REGARDING THE IDENTIFICATION OF OTHER TURTLE SPECIES THAT COULD BE ENCOUNTERED.
- b. THE EDUCATION SESSION WILL ALSO FOCUS ON MEANS TO DISCRIMINATE BETWEEN THE SPECIES OF CONCERN AND OTHER NATIVE SPECIES TO AVOID UNNECESSARY "FALSE ALARMS". ENCOUNTERS WITH ANY SPECIES OF TURTLES WILL BE DOCUMENTED.
- c. THE CONTRACTOR WILL BE PROVIDED WITH CELL, PHONE AND EMAIL CONTACTS FOR APT PERSONNEL TO IMMEDIATELY REPORT ANY ENCOUNTERS WITH SPOTTED TURTLE OR OTHER TURTLE SPECIES. EDUCATIONAL POSTER MATERIALS WILL BE PROVIDED BY APT AND DISPLAYED ON THE JOB SITE TO MAINTAIN WORKER AWARENESS AS THE PROJECT PROGRESSES.

3. PETROLEUM MATERIALS STORAGE AND SPILL PREVENTION

- a. CERTAIN PRECAUTIONS ARE NECESSARY TO STORE PETROLEUM MATERIALS, REFUEL AND CONTAIN AND PROPERLY CLEAN UP ANY INADVERTENT FUEL OR PETROLEUM (I.E., OIL, HYDRAULIC FLUID, ETC.) SPILL DUE TO THE PROJECT'S LOCATION IN AN APA AND PROXIMITY TO SENSITIVE WETLANDS.
- b. A SPILL CONTAINMENT KIT CONSISTING OF A SUFFICIENT SUPPLY OF ABSORBENT PADS AND ABSORBENT MATERIAL WILL BE MAINTAINED BY THE CONTRACTOR AT THE CONSTRUCTION SITE THROUGHOUT THE DURATION OF THE PROJECT. IN ADDITION, A WASTE DRUM WILL BE KEPT ON SITE TO CONTAIN ANY USED ABSORBENT PADS/MATERIAL FOR PROPER AND TIMELY DISPOSAL OFF SITE IN ACCORDANCE WITH APPLICABLE LOCAL, STATE AND FEDERAL LAWS.
- c. THE FOLLOWING PETROLEUM AND HAZARDOUS MATERIALS STORAGE AND REFUELING RESTRICTIONS AND SPILL RESPONSE PROCEDURES WILL BE ADHERED TO BY THE CONTRACTOR.
 - c.a. PETROLEUM AND HAZARDOUS MATERIALS STORAGE AND REFUELING
 - c.a.a. SERVICING OF MACHINERY SHALL BE COMPLETED OUTSIDE OF THE APA. MACHINERY REPAIRS THAT CANNOT BE PERFORMED OFF SITE SHALL TAKE PLACE ON AN IMPERVIOUS PAD WITH SECONDARY CONTAINMENT DESIGNED TO CONTAIN FLUIDS.
 - c.a.b. REFUELING OF VEHICLES OR MACHINERY SHALL OCCUR A MINIMUM OF 100 FEET FROM WETLANDS OR WATERCOURSES AND SHALL TAKE PLACE ON AN IMPERVIOUS PAD WITH SECONDARY CONTAINMENT DESIGNED TO CONTAIN FUELS.
 - c.a.c. ANY FUEL OR HAZARDOUS MATERIALS THAT MUST BE KEPT WITHIN THE APA DURING WORKING HOURS SHALL BE STORED ON AN IMPERVIOUS SURFACE UTILIZING SECONDARY CONTAINMENT A MINIMUM OF 100 FEET FROM WETLANDS OR WATERCOURSES.
 - c.b. INITIAL SPILL RESPONSE PROCEDURES
 - c.b.a. STOP OPERATIONS AND SHUT OFF EQUIPMENT.
 - c.b.b. REMOVE ANY SOURCES OF SPARK OR FLAME.
 - c.b.c. CONTAIN THE SOURCE OF THE SPILL.
 - c.b.d. DETERMINE THE APPROXIMATE VOLUME OF THE SPILL.
 - c.b.e. IDENTIFY THE LOCATION OF NATURAL FLOW PATHS TO PREVENT THE RELEASE OF THE SPILL TO SENSITIVE NEARBY WATERWAYS OR WETLANDS.
 - c.b.f. ENSURE THAT FOLLOW WORKERS ARE NOTIFIED OF THE SPILL.
 - c.c. SPILL CLEAN UP AND CONTAINMENT
 - c.c.a. OBTAIN SPILL RESPONSE MATERIALS FROM THE ON-SITE SPILL RESPONSE KIT. PLACE ABSORBENT MATERIALS DIRECTLY ON THE RELEASE AREA.
 - c.c.b. LIMIT THE SPREAD OF THE SPILL BY PLACING ABSORBENT MATERIALS AROUND THE PERIMETER OF THE SPILL.
 - c.c.c. ISOLATE AND ELIMINATE THE SPILL SOURCE.
 - c.c.d. CONTACT THE SOUTHWINGTON WATER DEPARTMENT, IMMEDIATELY AT (860) 628-5593, ALONG WITH OTHER APPROPRIATE LOCAL, STATE AND/OR FEDERAL AGENCIES, AS NECESSARY.
 - c.c.e. CONTACT A DISPOSAL COMPANY TO PROPERLY DISPOSE OF CONTAMINATED MATERIALS.
- d. REPORTING
 - d.a. COMPLETE AN INCIDENT REPORT.
 - d.b. SUBMIT A COMPLETED INCIDENT REPORT TO THE SOUTHWINGTON WATER DEPARTMENT AND CONNECTICUT SITING COUNCIL.

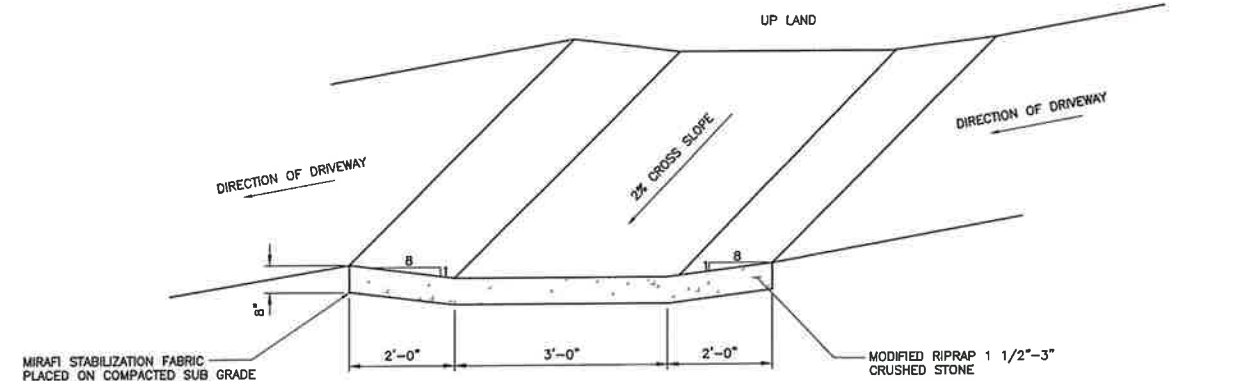
- 4. TURTLE PROTECTIVE MEASURES
 - a. PRIOR TO THE START OF CONSTRUCTION EACH DAY, THE CONTRACTOR SHALL SEARCH THE ENTIRE WORK AREA FOR TURTLES.
 - b. IF A TURTLE IS FOUND, IT SHALL BE IMMEDIATELY MOVED, UNHARMED, BY CAREFULLY GRASPED IN BOTH HANDS, ONE ON EACH SIDE OF THE SHELL, BETWEEN THE TURTLE'S FORELIMBS AND THE HIND LIMBS, AND PLACED JUST OUTSIDE OF THE ISOLATION BARRIER IN THE APPROXIMATE DIRECTION IT WAS WALKING.
 - c. SPECIAL CARE SHALL BE TAKEN BY THE CONTRACTOR DURING EARLY MORNING AND EVENING HOURS SO THAT POSSIBLE BASKING OR FORAGING TURTLES ARE NOT HARMED BY CONSTRUCTION ACTIVITIES.
- 5. HERBICIDE AND PESTICIDE RESTRICTIONS
 - a. THE USE OF HERBICIDES AND PESTICIDES AT THE PROPOSED WIRELESS TELECOMMUNICATIONS FACILITY AND ALONG THE PROPOSED ACCESS DRIVE ARE STRICTLY PROHIBITED.
- 6. REPORTING
 - a. MONTHLY INSPECTION REPORTS (BRIEF NARRATIVE AND APPLICABLE PHOTOS) WILL BE SUBMITTED TO THE CONNECTICUT SITING COUNCIL FOR COMPLIANCE VERIFICATION. ANY OBSERVATIONS OF TURTLES WILL BE INCLUDED IN THE REPORTS.
 - b. FOLLOWING COMPLETION OF THE CONSTRUCTION PROJECT, APT WILL PROVIDE A SUMMARY REPORT TO CTDEEP DOCUMENTING THE MONITORING AND MAINTENANCE OF THE BARRIER FENCE AND EROSION CONTROL MEASURES.
 - c. ANY OBSERVATIONS OF SPOTTED TURTLE WILL BE REPORTED TO CTDEEP BY APT, WITH PHOTO-DOCUMENTATION (IF POSSIBLE) AND WITH SPECIFIC INFORMATION ON THE LOCATION AND DISPOSITION OF THE ANIMAL.



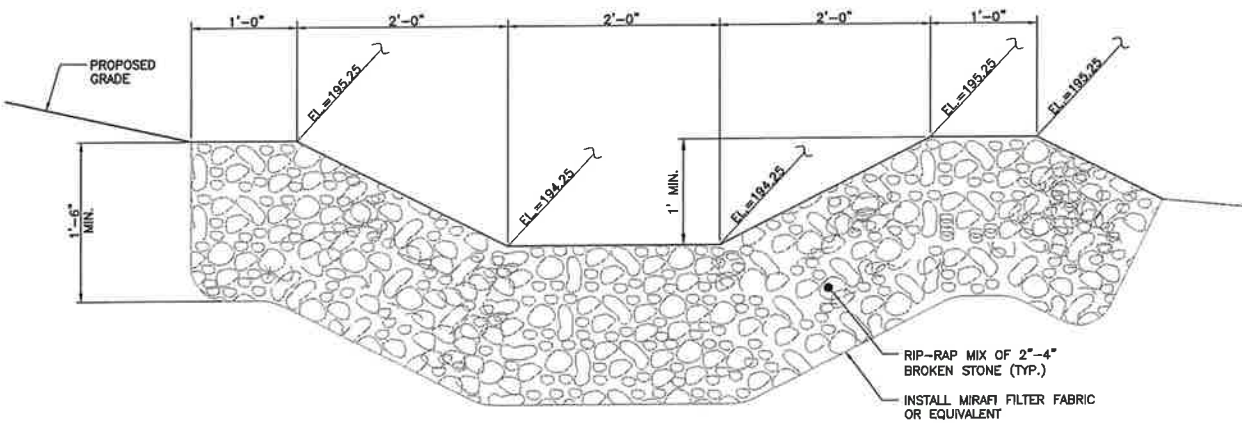
ARMORED STONE SURFACE SHALL BE FREE OF ORGANICS AND CONSIST SOLELY OF CRUSHED GRAVEL WITH THE FOLLOWING GRADATION:

SIEVE: 3 1/2"	% PASSING: 100
SIEVE: 2"	% PASSING: 35-70
SIEVE: 1 1/2"	% PASSING: 0-15
SIEVE: 1/2"	% PASSING: 0-5
SIEVE: NO. 4	% PASSING: 0

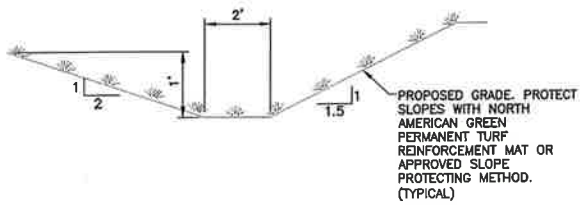
3 LEVEL SPREADER W/ CROSS DRAINAGE SWALE
C-5 NOT TO SCALE



2 CROSS DRAINAGE SWALE
C-5 NOT TO SCALE



1 LEVEL SPREADER SECTION
C-5 NOT TO SCALE



4 TYPICAL SWALE SECTION
C-5 NOT TO SCALE

REVISION	DATE	BY	DESCRIPTION
1	05/18/15	HMR	REVISED DAM PLANS - SILT FENCE EXTENSION FOR TURTLE PROTECTION
2	06/22/15	HMR	REVISED DAM PLANS - ACCESS DRIVE ADJUSTMENT PER TOWN COMMENTS
3	05/28/15	HMR	DAM PLANS - ISSUED FOR CLIENT REVIEW
4	05/18/15	HMR	DAM PLANS - ISSUED FOR CLIENT REVIEW

PROFESSIONAL ENGINEER SEAL

Cellco Partnership
d/b/a Verizon Wireless

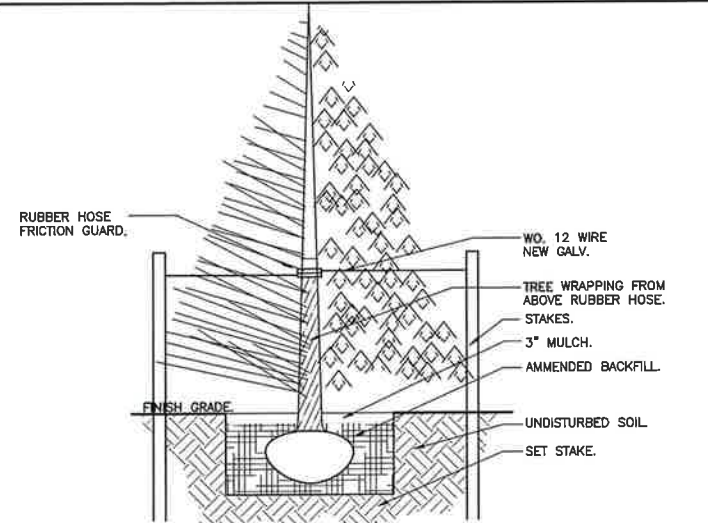
CENTEK engineering
Center on Suburbia
203 489-0580
203 489-8587 Fax
1000 Corporate Road
Bristol, CT 06040
www.CentekEng.com

Cellco Partnership d/b/a Verizon Wireless
WIRELESS COMMUNICATIONS FACILITY
SOUTHWINGTON - EAST STREET
99 EAST STREET
SOUTHWINGTON, CT 06489

DATE: 05/18/15
SCALE: AS NOTED
JOB NO. 14035.000

DRAINAGE CONTROL DETAILS AND ENVIRONMENTAL NOTES

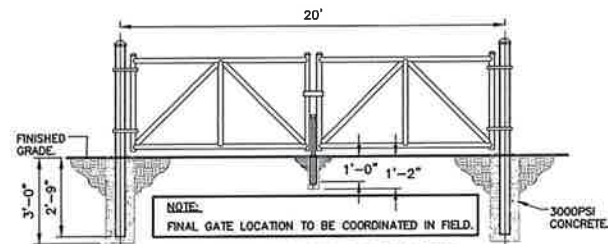
C-5
Sheet No. 7 of 9



TREE & SHRUB PLANTING SPECIFICATIONS:

1. GUY WIRES (W.D. 12 NEW GALV.) SHALL BE REQUIRED FOR ALL TREES 3 GAL AND LARGER.
2. SOIL MIX SHALL CONSIST OF: 3 PARTS TOP SOIL, 3 PART PEAT MOSS, 10 ONE PART COMPOSTED COW MANURE, AND 1 OZ. SOIL MOIST PER EVERY 12 IN. OF LINEAR DIM. OF ROOT BALL. COVER WITH LANDSCAPE FABRIC, AND A MINIMUM OF 3\"/>

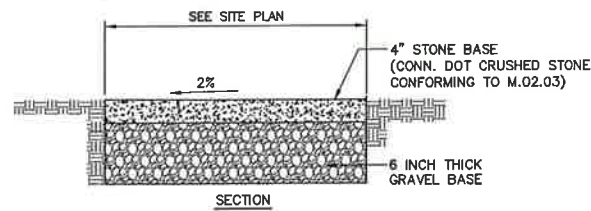
9 TYPICAL TREE PLANTING DETAIL
C-6 NOT TO SCALE



BARRIER GATE CONSTRUCTION NOTES

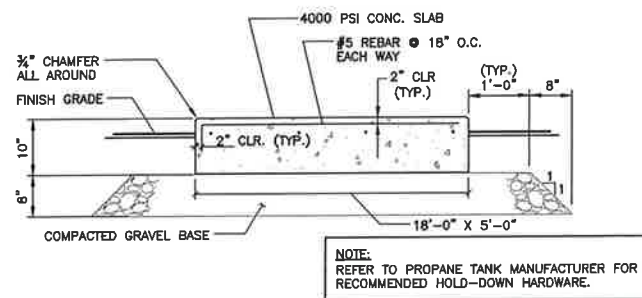
1. GATE POST 3\"/>

8 BARRIER GATE DETAIL
C-6 NOT TO SCALE

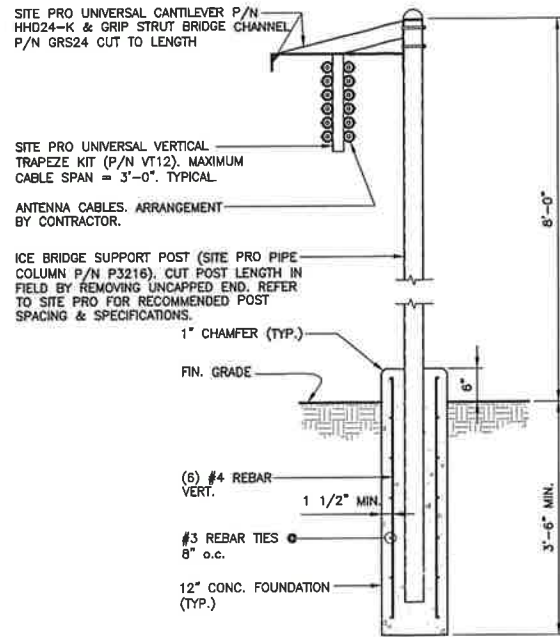


GRAVEL SURFACE PARKING AREA AND ACCESS DRIVE

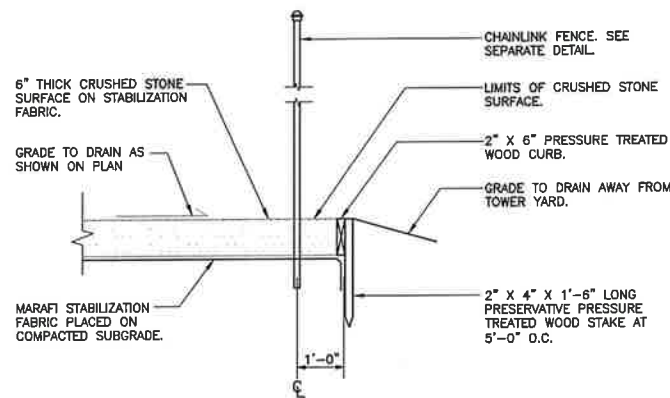
C-6 NOT TO SCALE



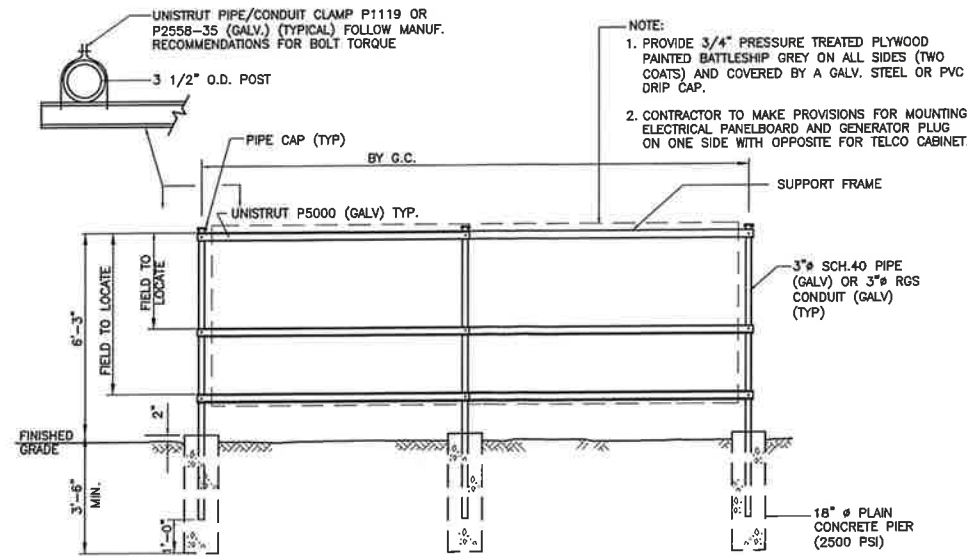
6 PROPANE TANK PAD DETAIL
C-6 NOT TO SCALE



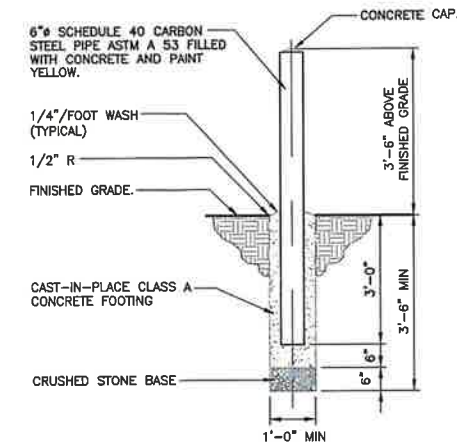
5 ICE BRIDGE DETAIL
C-6 NOT TO SCALE



4 COMPOUND SURFACING DETAIL
C-6 NOT TO SCALE



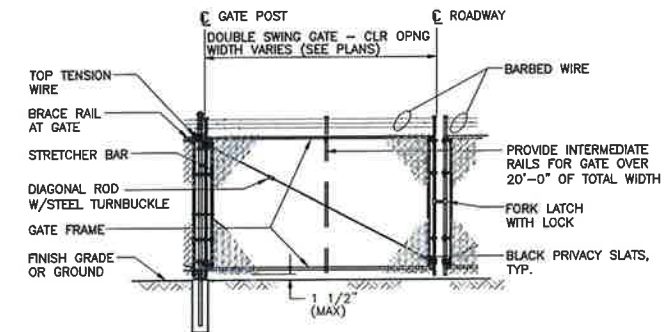
3 UTILITY SUPPORT FRAME (TYP)
C-6 NOT TO SCALE



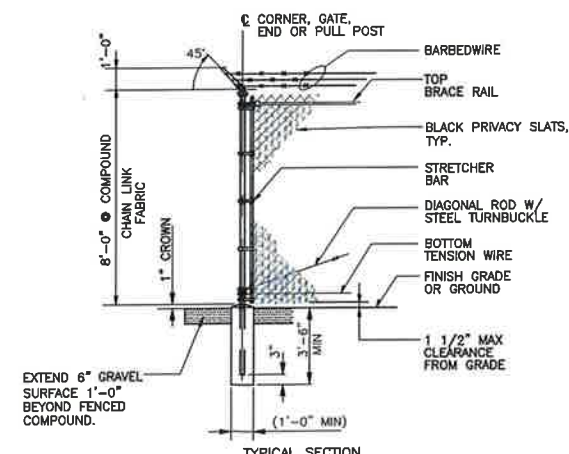
2 BOLLARD DETAIL
C-6 NOT TO SCALE

WOVEN WIRE FENCE NOTES

1. GATE POST, CORNER, TERMINAL OR PULL POST 2 1/2\"/>



1A WOVEN WIRE SWING GATE-DOUBLE
C-6 NOT TO SCALE



1 WOVEN WIRE FENCE DETAIL
C-6 NOT TO SCALE

REVISED DAM PLANS - SILT FENCE EXTENSION FOR TURTLE PROTECTION	CFC	05/06/15	HMR	3	05/06/15	HMR	3
REVISED DAM PLANS - ACCESS DRIVE ADJUSTMENT PER TOWN COMMENTS	CFC	05/22/15	HMR	2	05/22/15	HMR	2
DAM PLANS	CFC	05/29/15	HMR	1	05/29/15	HMR	1
DAM PLANS	CFC	05/15/15	HMR	0	05/15/15	HMR	0
DAM PLANS	CFC	05/15/15	HMR	0	05/15/15	HMR	0
DESCRIPTION	CHK'D BY	DATE	REV.	DATE	REV.	DATE	REV.

PROFESSIONAL ENGINEER SEAL

Callico Partnership
d.b.a. Verizon Wireless

CENTEK engineering
Consulting Solutions

203) 484-0390
1000 North Main Road
Branford, CT 06405
www.CentekEng.com

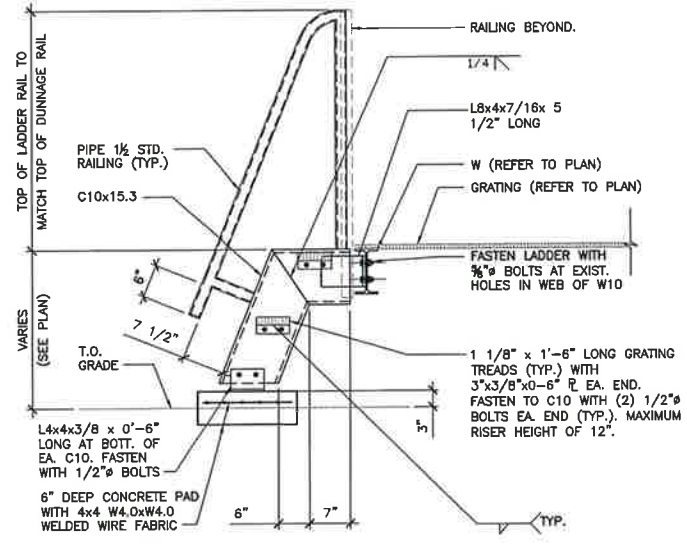
Cellco Partnership d/b/a Verizon Wireless
WIRELESS COMMUNICATIONS FACILITY

SOUTHINGTON - EAST STREET
99 EAST STREET
SOUTHINGTON, CT 06489

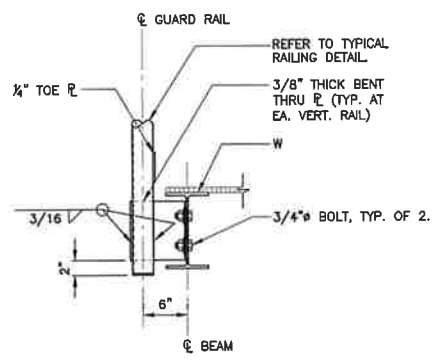
DATE: 05/18/15
SCALE: AS NOTED
JOB NO. 14035.000

SITE DETAILS

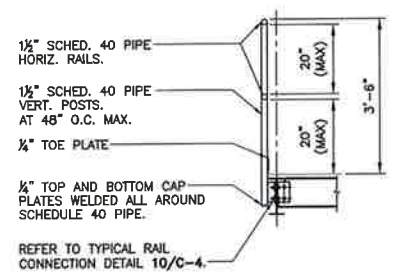
C-6
Sheet No. 8 of 9



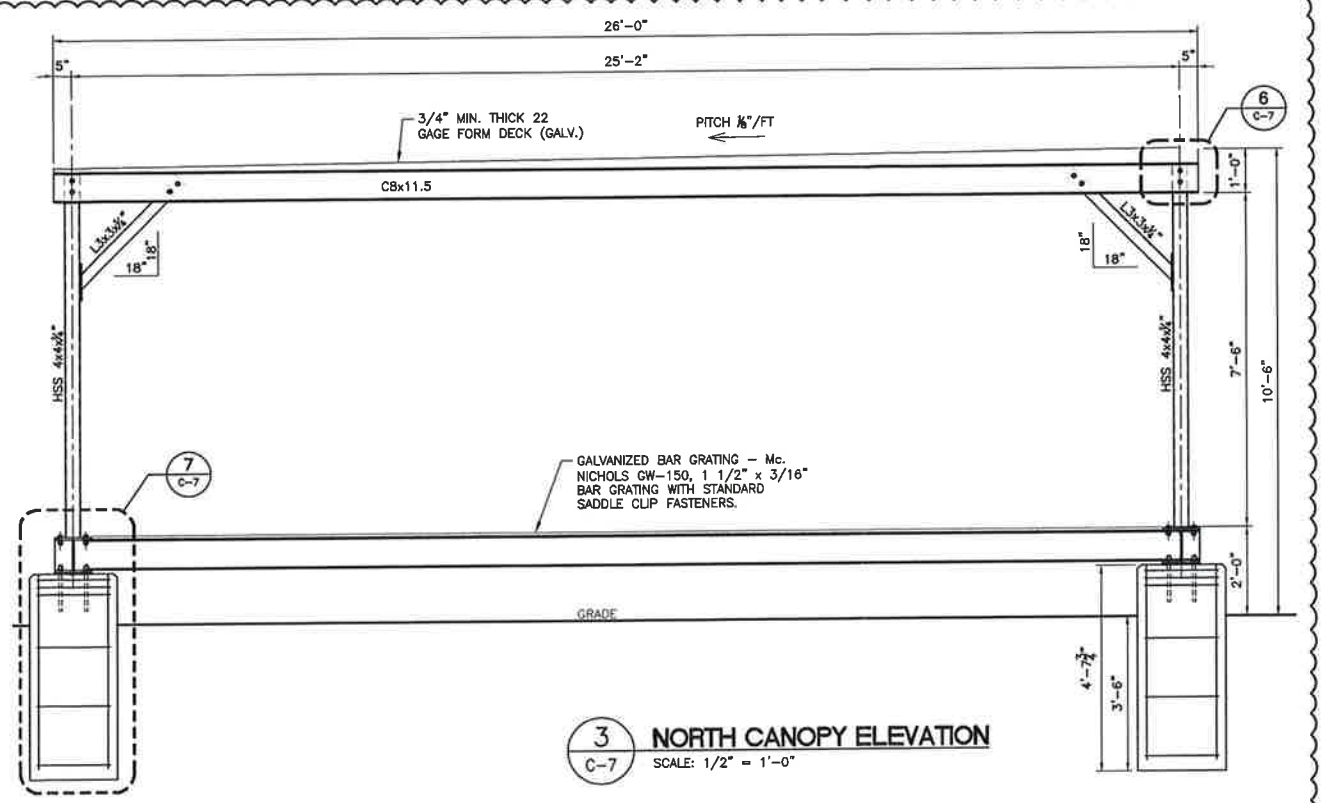
8 DETAIL
C-7 SCALE: 3/4" = 1'-0"



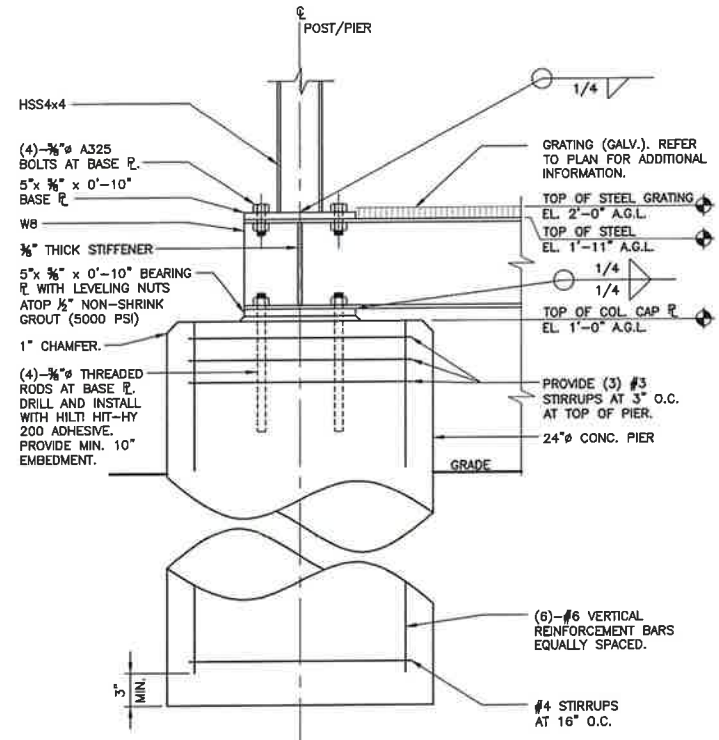
10 DETAIL
C-7 SCALE: 1" = 1'-0"



9 TYPICAL RAILING DETAIL
C-7 SCALE: 1/2" = 1'-0"



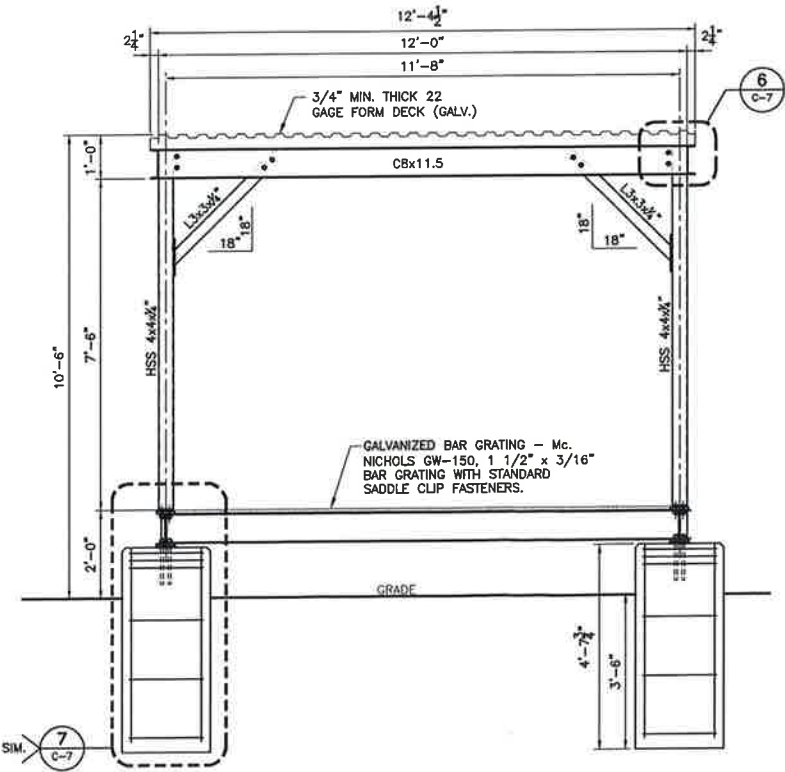
3 NORTH CANOPY ELEVATION
C-7 SCALE: 1/2" = 1'-0"



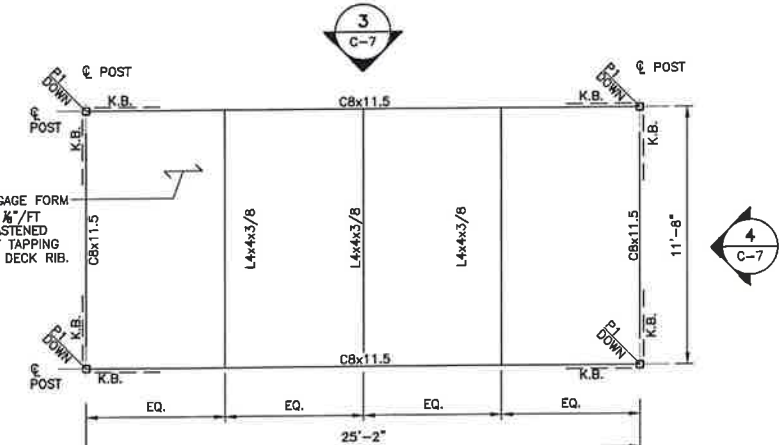
7 DETAIL
C-7 1 1/2" = 1'-0"

PLAN NOTES AND LEGEND

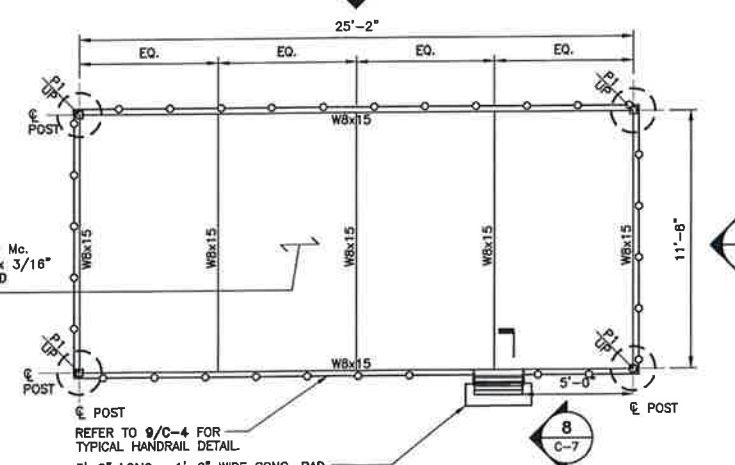
1. VERIFY ALL DIMENSIONS, ELEVATIONS, EXISTING FRAMING MEMBER SIZES AND GENERAL CONDITIONS PRIOR TO COMMENCEMENT OF WORK. NOTIFY ENGINEER OF RECORD OF ANY DISCREPANCIES BETWEEN THESE DRAWINGS AND EXISTING CONDITIONS.
- INDICATES HSS4x4x1/4 ASTM A500 GR. B (F_y = 46ksi) STEEL POST.
- INDICATES SPAN DIRECTION.
- K.B. INDICATES L3x3x1/4 ASTM A36 (F_y=36 KSI) STEEL ANGLE



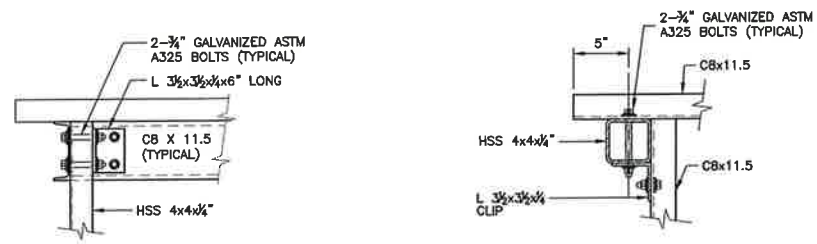
4 EAST CANOPY ELEVATION
C-7 1/2" = 1'-0"



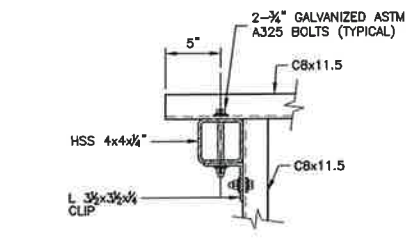
2 PLAN - ROOF FRAMING
C-7 SCALE: 1/4" = 1'-0"



1 PLAN - EQUIPMENT PLATFORM
C-7 1/4" = 1'-0"



6 CANOPY FRAME CONNECTION
C-7 SCALE: 1" = 1'-0"



5 CANOPY FRAME CONNECTION
C-7 SCALE: 1-1/2" = 1'-0"

PROFESSIONAL ENGINEER SEAL

CONSTRUCTION PROFESSIONAL SEAL

Calico Partnership
d.b.a. Verizon Wireless

CEN TEK engineering
Centek on Solutions®
2031 488-0590
2031 488-8387 fax
352 North Bromford Road
Branford, CT 06495
www.cenitekeng.com

Calico Partnership d/b/a Verizon Wireless
WIRELESS COMMUNICATIONS FACILITY
SOUTHINGTON - EAST STREET
99 EAST STREET
SOUTHINGTON, CT 06489

DATE: 05/18/15
SCALE: AS NOTED
JOB NO. 14035.000

EQUIPMENT PLATFORM AND CANOPY ROOF DETAILS

C-7
Sheet No. 9 of 9

REV.	DATE	DESCRIPTION
0	05/19/15	HMR CFC DAM PLANS - ISSUED FOR CLIENT REVIEW
1	05/29/15	HMR CFC DAM PLANS
2	06/22/15	HMR CFC REVISED DAM PLANS - ACCESS DRIVE ADJUSTMENT PER TOWN COMMENTS
3	06/26/15	HMR CFC REVISED DAM PLANS - SILT FENCE EXTENSION FOR TURTLE PROTECTION
4	04/29/16	JTD DMD REVISED DAM PLANS - OUTDOOR EQUIPMENT IN LIBY OF EQUIP. SHELTER