



STATE OF CONNECTICUT  
CONNECTICUT SITING COUNCIL

Ten Franklin Square, New Britain, CT 06051

Phone: (860) 827-2935 Fax: (860) 827-2950

E-Mail: [siting.council@ct.gov](mailto:siting.council@ct.gov)  
[www.ct.gov/csc](http://www.ct.gov/csc)

November 24, 2014

TO: Council Members

FROM: Melanie Bachman, Acting Executive Director *MB*

RE: **DOCKET NO. 452** - Homeland Towers, LLC and New Cingular Wireless PCS, LLC application for a Certificate of Environmental Compatibility and Public Need for the construction, maintenance, and operation of a telecommunications facility located at Salisbury Tax Assessor Map 16 Lot 5, 250 Canaan Road, Salisbury, Connecticut.

---

The Connecticut Siting Council has scheduled a field review for this docket for Thursday, December 4, 2014, beginning at 2:00 p.m. at 250 Canaan Road, Salisbury, Connecticut. Council members and all interested participants will first meet at the maintenance garage area of the Salisbury School before proceeding to the proposed site.

A public hearing is scheduled for Thursday, December 4, 2014, beginning at 3:00 p.m. at the Salisbury Town Hall, Upstairs Meeting Room, 27 Main Street, Salisbury, Connecticut.

A map and directions are enclosed.

MB/MP/cm

Enclosure

c: Secretary of the State (via e-mail service)  
Parties and Intervenors (via e-mail service)  
United Reporters (via e-mail service)  
Tech Theatrical Services, LLC (via e-mail service)

## **DIRECTIONS - DOCKET 452 – SALISBURY**

**TO: Proposed Tower Site – 250 Canaan Road, Salisbury**

### **From Enfield Area**

Take Interstate 91 South to Route 20 West (towards Bradley Airport).  
Follow Route 20 West until it ends in Winchester.  
Turn left onto Route 8 South. Proceed on Route 8 South for about 1.8 miles.  
Take right onto Route 44 West.  
Proceed on Route 44 West for about 20 miles to the Salisbury Town Line.  
Continue on Route 44 for about 1.9 miles.  
At the Applicant's sign, turn right onto the Maintenance/Boathouse entrance to Salisbury School.  
Proceed about 0.3 miles until the paved driveway ends.  
Turn right and park by the maintenance area opposite the football field.

### **From Farmington Area**

Take Route 4 West to Route 8 North in Torrington.  
Proceed on Route 8 North until the divided highway ends.  
Turn right onto Route 44 West.  
Proceed on Route 44 West for about 20 miles to the Salisbury Town Line.  
Continue on Route 44 for about 1.9 miles.  
At the Applicant's sign, turn right onto the Maintenance/Boathouse entrance to Salisbury School.  
Proceed about 0.3 miles until the paved driveway ends.  
Turn right and park by the maintenance area opposite the football field.

### **From Hartford Area**

Take I-84 West to Route 4 West.  
Take Route 4 West to Route 8 North in Torrington.  
Proceed on Route 8 North until the divided highway ends.  
Turn right onto Route 44 West.  
Proceed on Route 44 West for about 20 miles to the Salisbury Town Line.  
Continue on Route 44 for about 1.9 miles.  
At the Applicant's sign, turn right onto the Maintenance/Boathouse entrance to Salisbury School.  
Proceed about 0.3 miles until the paved driveway ends.  
Turn right and park by the maintenance area opposite the football field.

### **From Meriden Area**

Take I-691 West to I-84 West.

Take I-84 West to Route 8 North.

Take Route 8 North until the divided highway ends.

Turn right onto Route 44 West.

Proceed on Route 44 West for about 20 miles to the Salisbury Town Line.

Continue on Route 44 for about 1.9 miles.

At the Applicant's sign, turn right onto the Maintenance/Boathouse entrance to the Salisbury School.

Proceed about 0.3 miles until the paved driveway ends.

Turn right and park by the maintenance area opposite the football field.

### **From Milford Area**

Take I-95 South or Route 15 South to Route 8 North.

Proceed on Route 8 North until the divided highway ends.

Turn right onto Route 44 West.

Proceed on Route 44 West for about 20 miles to the Salisbury Town Line.

Continue on Route 44 for about 1.9 miles.

At the Applicant's sign, turn right onto the Maintenance/Boathouse entrance to the Salisbury School.

Proceed about 0.3 miles until the paved driveway ends.

Turn right and park by the maintenance area opposite the football field.

### **From New Britain Area**

Take Route 72 West to Route 177 North.

Proceed on Route 177 North until it ends.

Turn left onto Route 44 West.

Proceed on Route 44 West for about 20 miles to the Salisbury Town Line.

Continue on Route 44 for about 1.9 miles.

At the Applicant's sign, turn right onto the Maintenance/Boathouse entrance to the Salisbury School.

Proceed about 0.3 miles until the paved driveway ends.

Turn right and park by the maintenance area opposite the football field.

### **From Stamford Area**

Take I-95 North to Route 7 North.

Follow Route 7 North to Route 44 West in Salisbury.

Turn left onto Route 44 West.

Proceed on Route 44 West for about 4.6 miles.

At the Applicant's sign, turn right onto the Maintenance/Boathouse entrance to the Salisbury School.

Proceed about 0.3 miles until the paved driveway ends.

Turn right and park by the maintenance area opposite the football field.

### **From Stonington Area**

Take I-95 South to Route 9 North.

Take Route 9 North to Route 72 West in New Britain.

Take Route 72 West to Route 177 North.

Proceed on Route 177 North until it ends.

Turn left onto Route 44 West.

Proceed on Route 44 West for about 20 miles to the Salisbury Town Line.

Continue on Route 44 for about 1.9 miles.

At the Applicant's sign, turn right onto the Maintenance/Boathouse entrance to the Salisbury School.

Proceed about 0.3 miles until the paved driveway ends.

Turn right and park by the maintenance area opposite the football field.

### **From Westbrook Area**

Take I-95 South to Bridgeport area.

Take Route 8 North until the divided highway ends.

Turn onto Route 44 West.

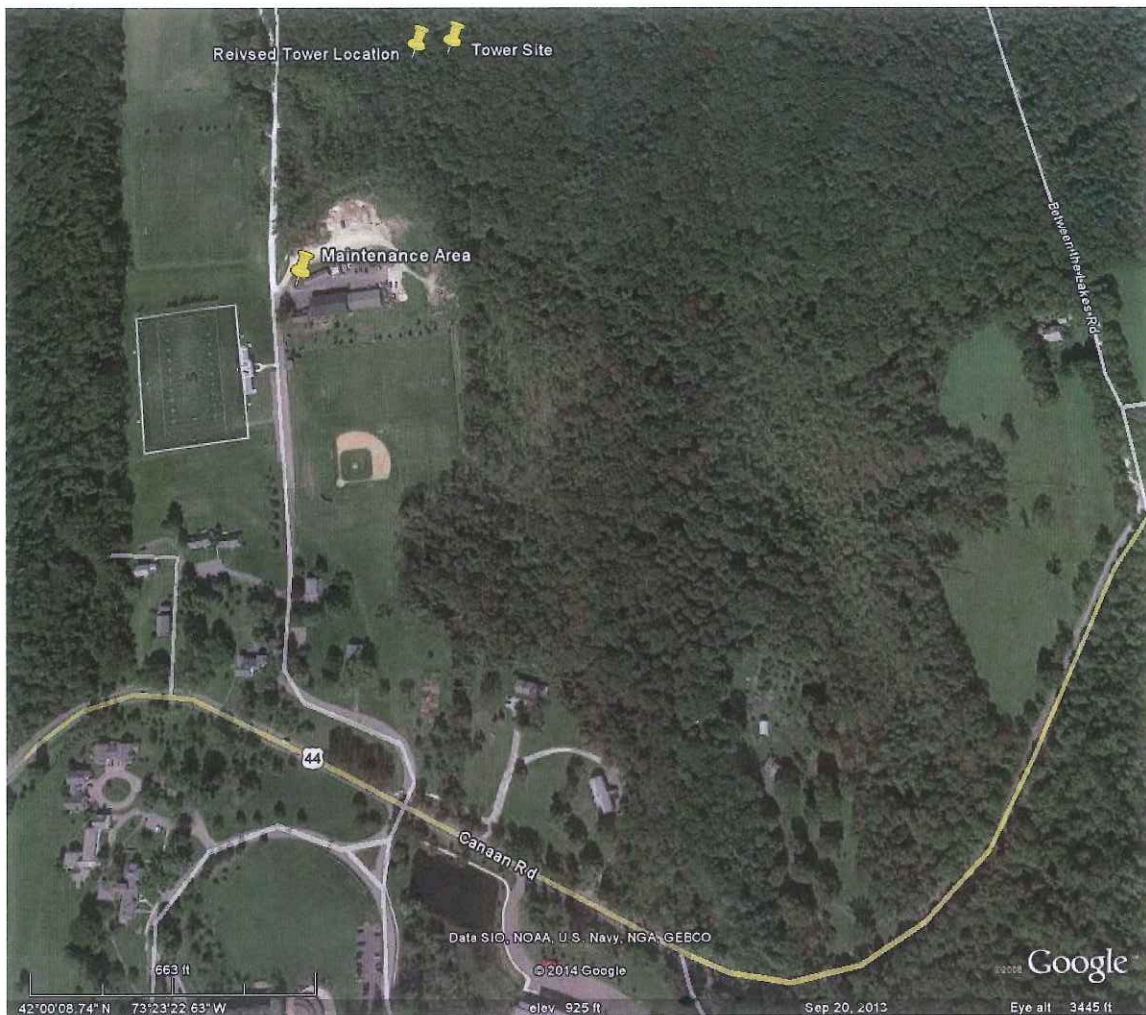
Proceed on Route 44 West for about 20 miles to the Salisbury Town Line.

Continue on Route 44 for about 1.9 miles.

At the Applicant's sign, turn right onto the Maintenance/Boathouse entrance to the Salisbury School.

Proceed about 0.3 miles until the paved driveway ends.

Turn right and park by the maintenance area opposite the football field.



**TO: Salisbury Town Hall, Upstairs Meeting Room, 27 Main Street, Salisbury**

**From the Site (250 Canaan Road, Salisbury)**

Turn right onto Route 44.

Proceed on Route 44 for about 2.3 miles.

The Salisbury Town Hall is located on the right at 27 Main Street.

Turn right onto Factory-Washinee Road to park at the Salisbury Town Hall.

**From Enfield Area**

Take I-91 South to Route 20 West.

Follow Route 20 West until it ends.

Turn left onto Route 8 South.

Take Route 8 South to Route 44 West.

Turn right onto Route 44 West.

Proceed on Route 44 West for about 20 miles to the Salisbury Town Line.

Continue on Route 44 for about 4.2 miles.

The Salisbury Town Hall is located on the right at 27 Main Street.

Turn right onto Factory-Washinee Road to park at the Salisbury Town Hall.

### **From Farmington Area**

Take Route 4 West to Route 8 North in Torrington.  
Follow Route 8 North until the divided highway ends.  
Turn right onto Route 44 West.  
Proceed on Route 44 West for about 20 miles to the Salisbury Town Line.  
Continue on Route 44 for about 4.2 miles.  
The Salisbury Town Hall is located on the right at 27 Main Street.  
Turn right onto Factory-Washinee Road to park at the Salisbury Town Hall.

### **From Hartford Area**

Take I-84 West to Route 4 West.  
Take Route 4 West to Route 8 North in Torrington.  
Follow Route 8 North until the divided highway ends.  
Turn right onto Route 44 West.  
Proceed on Route 44 West for about 20 miles to the Salisbury Town Line.  
Continue on Route 44 for about 4.2 miles.  
The Salisbury Town Hall is located on the right at 27 Main Street.  
Turn right onto Factory Washinee Road to park at the Salisbury Town Hall.

### **From Meriden Area**

Take I-691 West to I-84 West.  
Take I-84 West to Route 8 North.  
Follow Route 8 North until the divided highway ends.  
Turn right onto Route 44 West.  
Proceed on Route 44 West for about 20 miles to the Salisbury Town Line.  
Take Route 8 North until the divided highway runs out in Winsted (Winchester).  
Take Route 44 West to the Salisbury Town Line.  
Continue on Route 44 for about 4.2 miles.  
The Salisbury Town Hall is located on the right at 27 Main Street.  
Turn right onto Factory-Washinee Road to park at the Salisbury Town Hall.

### **From Milford Area**

Take I-95 South or Route 15 South to Route 8 North.  
Take Route 8 North until the divided highway ends.  
Turn right onto Route 44 West.  
Proceed on Route 44 West for about 20 miles to the Salisbury Town Line.  
Continue on Route 44 for about 4.2 miles.  
The Salisbury Town Hall is located on the right at 27 Main Street.  
Turn right onto Factory Washinee Road to park at the Salisbury Town Hall.

### **From New Britain Area**

Take Route 72 West to Route 177 North.

Take Route 177 North to Route 4 West.

Take Route 4 West to Route 8 North.

Follow Route 8 North until the divided highway ends.

Turn right onto Route 44 West.

Proceed on Route 44 West for about 20 miles to the Salisbury Town Line.

Continue on Route 44 for about 4.2 miles.

The Salisbury Town Hall is located on the right at 27 Main Street.

Turn right onto Factory Washinee Road to park at the Salisbury Town Hall.

### **From Stamford Area**

Take I-95 North to Route 7 North.

Directions from Route 7 North are listed below.

Turn onto Route 44 West.

Proceed on Route 44 West for about 7 miles.

The Salisbury Town Hall is located on the right at 27 Main Street.

Turn right onto Factory Washinee Road to park at the Salisbury Town Hall.

### **From Stonington Area**

Take I-95 South to Route 9 North.

Take Route 9 North to Route 72 West in New Britain.

Take Route 72 West to Route 177 North.

Proceed on Route 177 North until it ends.

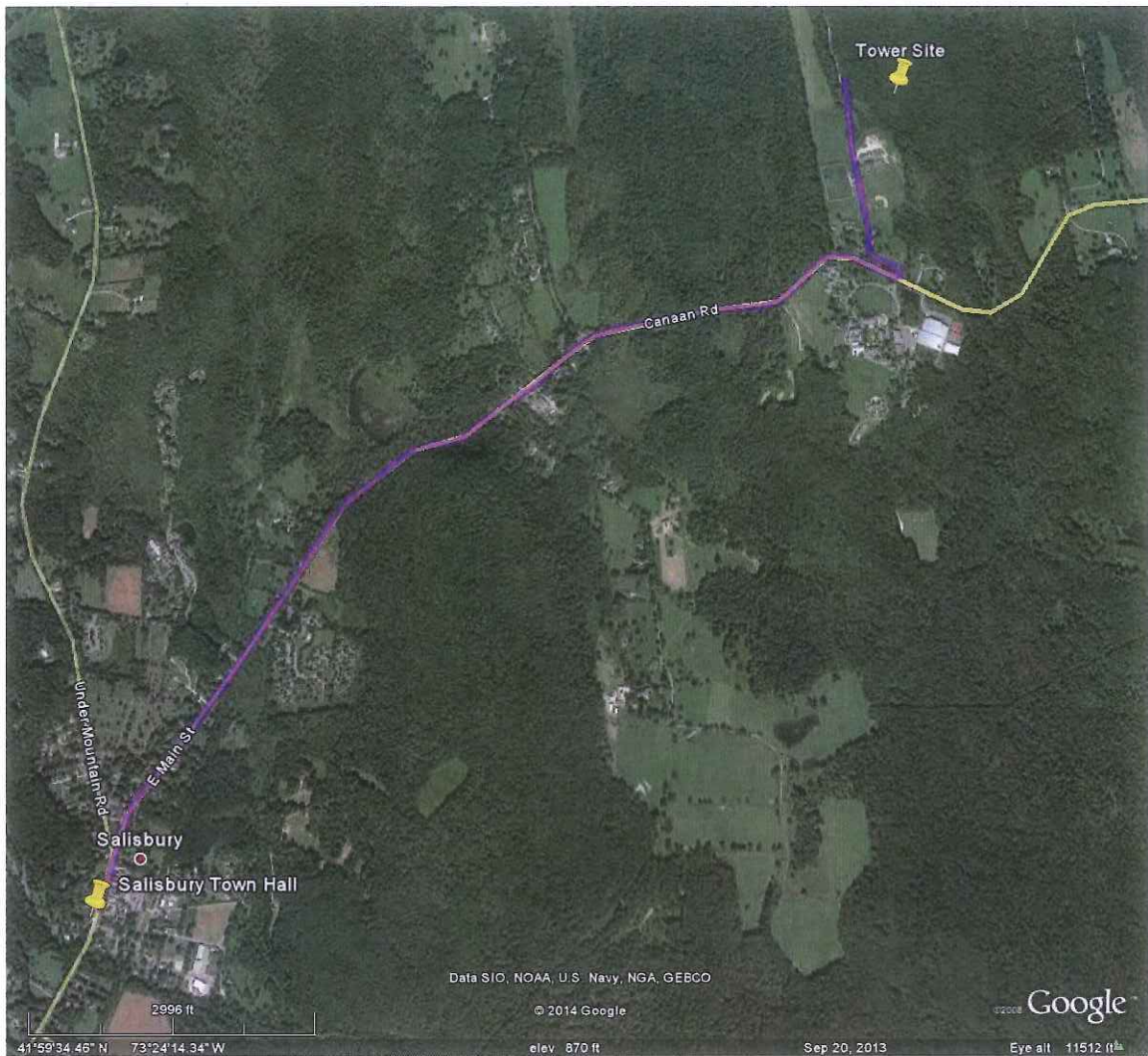
Turn left onto Route 44 West.

Proceed on Route 44 West for about 20 miles to the Salisbury Town Line.

Continue on Route 44 for about 4.2 miles.

The Salisbury Town Hall is located on the right at 27 Main Street.

Turn right onto Factory Washinee Road to park at the Salisbury Town Hall.



**TO RESTAURANT:**

**The Black Rabbit Bar and Grille, 2 Ethan Allen Street, Lakeville (Salisbury)**

**FROM HEARING LOCATION:**

**Salisbury Town Hall, 27 Main Street, Salisbury**

Turn right onto Main Street (Route 44).

Proceed on Main Street for about (Route 44) for about 1.6 miles.

Turn left onto Sharon Road (Route 41).

Proceed on Sharon Road for less than 0.1 miles.

Turn right onto Ethan Allen Street.

The Black Rabbit Bar and Grille is located at 2 Ethan Allen Street.



