

STATE OF CONNECTICUT
CONNECTICUT SITING COUNCIL

IN RE: :
 :
 APPLICATION OF MESSAGE CENTER : DOCKET NO. 449
 MANAGEMENT AND NEW CINGULAR :
 WIRELESS, PCS LLC FOR A CERTIFICATE OF :
 ENVIRONMENTAL COMPATIBILITY AND :
 PUBLIC NEED FOR THE CONSTRUCTION, :
 MAINTENANCE AND OPERATION OF A :
 WIRELESS TELECOMMUNICATIONS :
 FACILITY IN REDDING, CONNECTICUT : SEPTEMBER 2, 2014

RESPONSES OF CELLCO PARTNERSHIP d/b/a VERIZON WIRELESS
TO CONNECTICUT SITING COUNCIL PRE-HEARING QUESTIONS, SET THREE

On August 15, 2014, the Connecticut Siting Council (“Council”) issued Pre-Hearing Questions, Set Three to Cellco Partnership d/b/a Verizon Wireless (“Cellco”), relating to the above-captioned docket. Below are Cellco’s responses. Cellco identifies this facility as its “Redding NE” cell site.

Question No. 43

Provide propagation maps showing existing plus proposed coverage at antenna centerline heights of 120 feet and 110 feet for 700 MHz, 850 MHz, 1900 MHz, and 2100 MHz or as applicable.

Response

Plots depicting existing and proposed coverage from Cellco’s antennas at a height of 120’ above ground level (“AGL”) are included in Attachment 1. Plots depicting coverage from Cellco’s antennas at a height of 110’ AGL are included in Attachment 2.

Question No. 44

Provide propagation maps showing existing plus proposed coverage at antenna centerline heights of 140 feet and 110 feet depicting coverage to Putnam Memorial State Park and Huntington State Park for 700 MHz, 850 MHz, 1900 MHz, and 2100 MHz or as applicable.

Response

Plots showing existing and proposed coverage with Cellco antennas at 140 feet AGL are included in Attachment 3. Plots showing existing and proposed coverage with Cellco antennas at 110 feet AGL have been provided in Attachment 2. The locations of the Putnam Memorial State Park and Huntington State Park have been highlighted on all coverage plots.

Question No. 45

Provide the lengths of the coverage that Cellco Partnership d/b/a Verizon Wireless (Cellco) would provide along primary roads from the proposed site for 700 MHz, 850 MHz, 1900 MHz, and 2100 MHz or as applicable, assuming antenna centerline heights of 120 feet and 110 feet.

Response

<u>Length of Coverage on Primary Roads (Miles) with Antennas at 120' AGL</u>				
<u>Primary Roads</u>	<u>700 MHz</u>	<u>850 MHz</u>	<u>1900 MHz</u>	<u>2100 MHz</u>
Route 58	2.21	2.00	1.77	1.69
Cross Highway	0.42	0.35	0.30	0.30

<u>Length of Coverage on Primary Roads (Miles) with antennas at 110' AGL</u>				
<u>Primary Roads</u>	<u>700 MHz</u>	<u>850 MHz</u>	<u>1900 MHz</u>	<u>2100 MHz</u>
Route 58	2.10	1.92	1.69	1.61
Cross Highway	0.42	0.35	0.30	0.30

Question No. 46

Provide the lengths of the coverage that Cellco would provide along secondary roads from the proposed site for 700 MHz, 850 MHz, 1900 MHz, and 2100 MHz or as applicable, assuming antenna centerline heights of 120 feet and 110 feet.

Response

<u>Length of Coverage on Secondary Roads (Miles) with Antennas at 120' AGL</u>				
<u>Sec. Roads</u>	<u>700 MHz</u>	<u>850 MHz</u>	<u>1900 MHz</u>	<u>2100 MHz</u>
Silversmith Lane	0.2	0.2	0.2	0.2
Meeker Hill Road	0.9	0.9	0.6	0.6
Turney Road	0.8	0.8	0.6	0.6
South Lane	0.2	0.2	0.2	0.2
Iris Lane	0.2	0.2	0.2	0.2
Beech Lane	0.2	0.2	0.2	0.2
Sullivan Drive	0.2	0.2	0.2	0.2
Hopewell Woods	2.6	1.8	1.2	1.0

<u>Length of Coverage on Secondary Roads (Miles) with Antennas at 120' AGL</u>				
<u>Sec. Roads</u>	<u>700 MHz</u>	<u>850 MHz</u>	<u>1900 MHz</u>	<u>2100 MHz</u>
Sunset Hill	1.6	0.9	0.8	0.7

<u>Length of Coverage on Secondary Roads (Miles) with Antennas at 110' AGL</u>				
<u>Sec. Roads</u>	<u>700 MHz</u>	<u>850 MHz</u>	<u>1900 MHz</u>	<u>2100 MHz</u>
Silversmith Lane	0.2	0.2	0.2	0.2
Meeker Hill Road	0.8	0.8	0.5	0.5
Turney Road	0.7	0.7	0.5	0.5
South Lane	0.2	0.2	0.2	0.2
Iris Lane	0.2	0.2	0.2	0.2
Beech Lane	0.2	0.2	0.2	0.2
Sullivan Drive	0.2	0.2	0.2	0.2
Hopewell Woods	2.2	1.1	1.0	0.8
Sunset Hill	1.3	0.9	0.5	0.5

Question No. 47

Provide the predicted coverage areas from the proposed site (in square miles) for Cellco assuming antenna centerline heights of 120 feet and 110 feet for 700 MHz, 850 MHz, 1900 MHz, and 2100 MHz or as applicable.

Response

<u>Coverage Footprint (Sq. Miles)</u>				
<u>Antenna Height</u>	<u>700 MHz</u>	<u>850 MHz</u>	<u>1900 MHz</u>	<u>2100 MHz</u>
120 feet	31.07	15.36	9.40	7.31
110 feet	29.59	14.35	9.02	7.01

CERTIFICATE OF SERVICE

I hereby certify that on the 2nd day of September, 2014, a copy of the foregoing was sent,
via electronic mail, to:

Daniel M. Laub, Esq.
Christopher B. Fisher, Esq.
Cuddy & Feder LLP
445 Hamilton Avenue, 14th Floor
White Plains, NY 10601
CFisher@cuddyfeder.com
DLaub@cuddyfeder.com

Michele Briggs
AT&T
500 Enterprise Drive
Rocky Hill, CT 06067-3900
Michele.g.briggs@cingular.com

Virginia King
Message Center Management
40 Woodland Street
Hartford, CT 06105
vking@mcmgmt.com

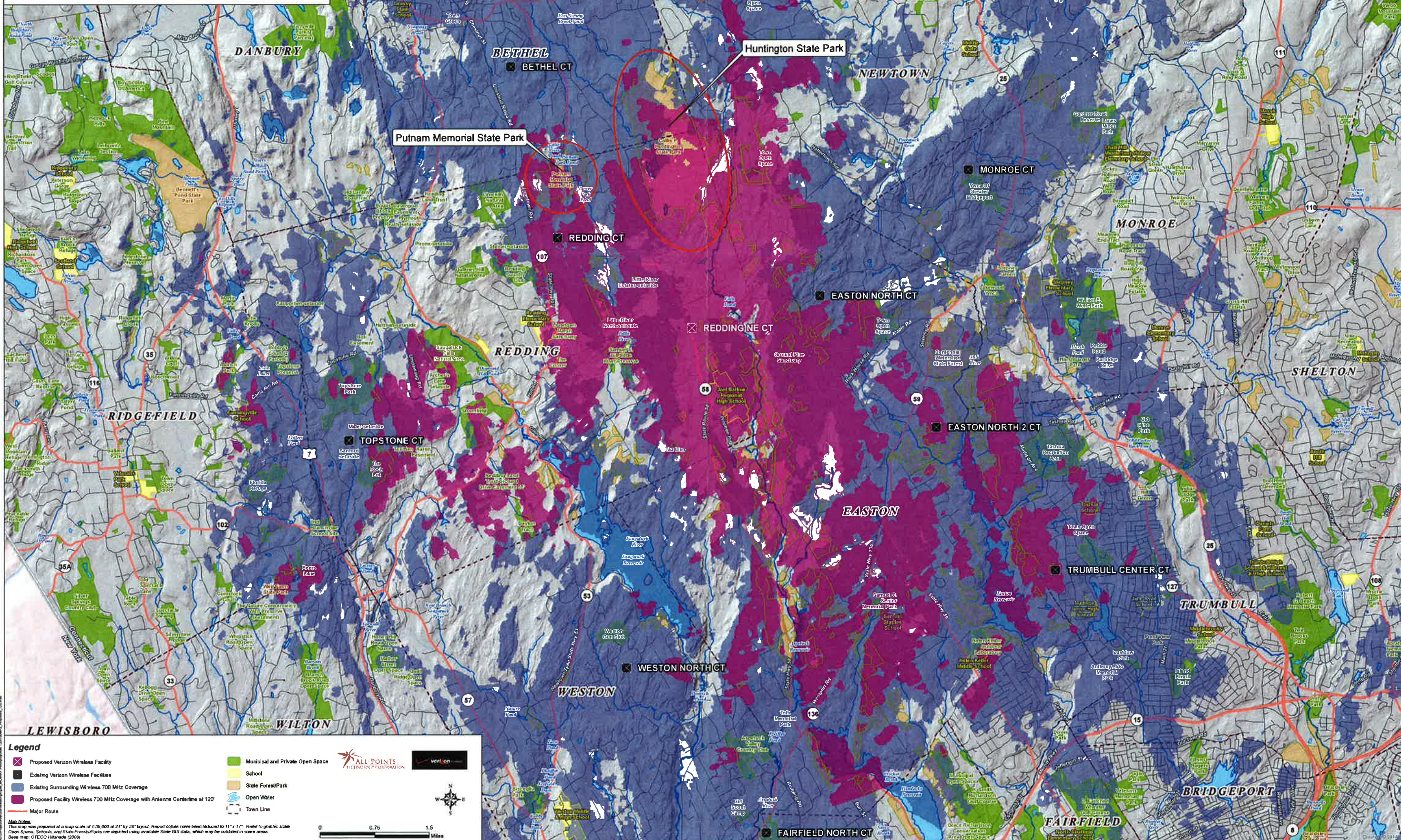


Kenneth C. Baldwin

ATTACHMENT 1

**Proposed Verizon Wireless 700 MHz Coverage
with Antenna Centerline Height at 120' AGL
Redding, Connecticut and Surrounding Area
(*Map Scale is 1:35,000)**

Coverage is depicted at a signal threshold of 120 dB Operational Path Loss



Legend

- Proposed Verizon Wireless Facility
- Existing Verizon Wireless Facilities
- Existing Surrounding Wireless 700 MHz Coverage
- Proposed Facility Wireless 700 MHz Coverage with Antenna Centerline at 120'
- Major Route
- Municipal and Private Open Space
- School
- State Forest/Park
- Open Water
- Town Line

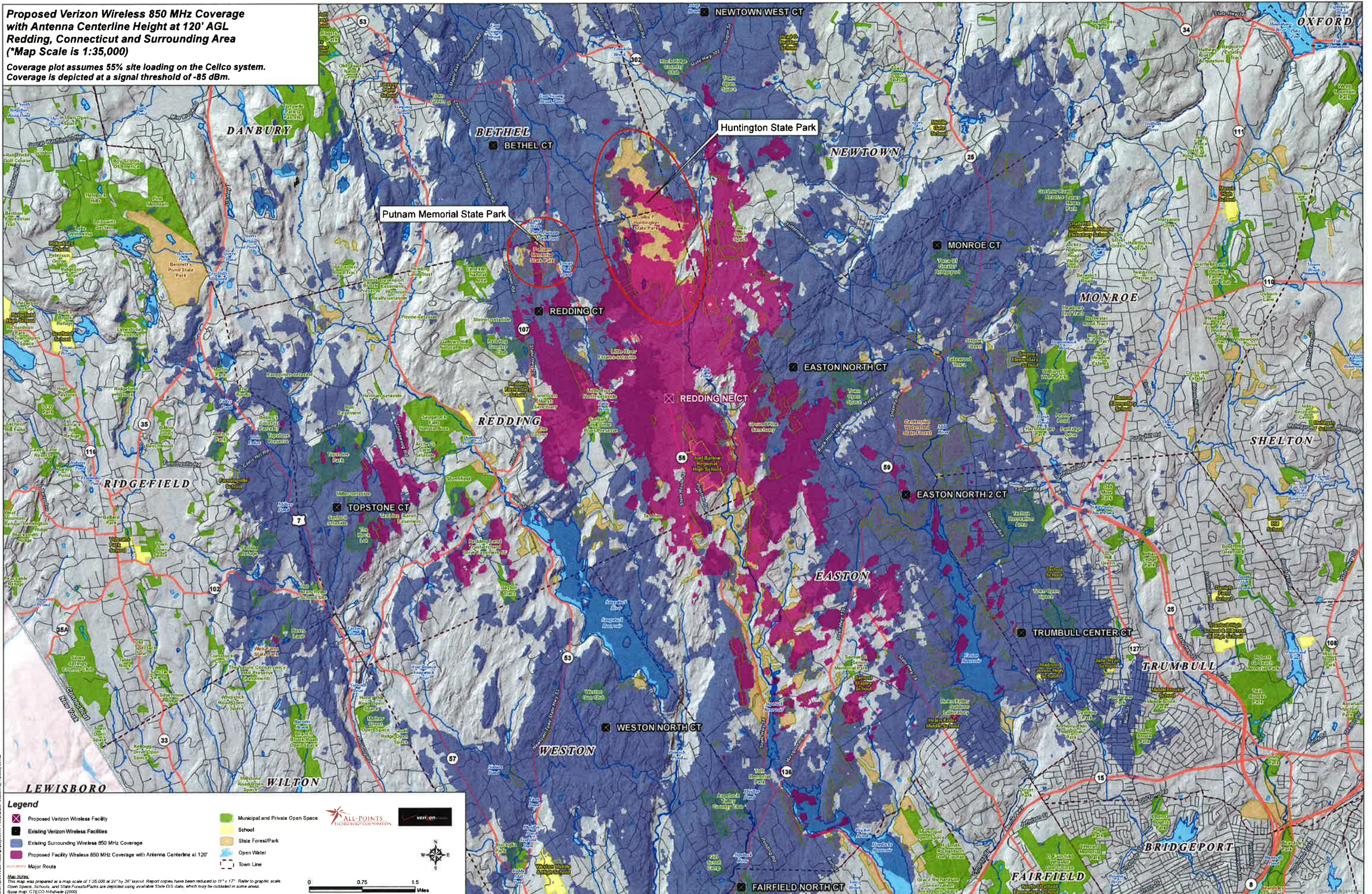
Map Notes:
This map was prepared at a map scale of 1:35,000 at 24" by 36" layout. Report copies have been reduced to 11" x 17" raster to graphic scale. Open Space, Schools, and State Forests/Parks are depicted using available State GIS data, which may be outdated in some areas. Base map: CTECO Hatahade (2009)

Scale: 0 0.75 1.5 Miles

Logos: ALL POINTS TECHNOLOGY CORPORATION, verizon

**Proposed Verizon Wireless 850 MHz Coverage
with Antenna Centerline Height at 120' AGL
Redding, Connecticut and Surrounding Area
(*Map Scale is 1:35,000)**

Coverage plot assumes 55% site loading on the Cellco system.
Coverage is depicted at a signal threshold of -85 dBm.



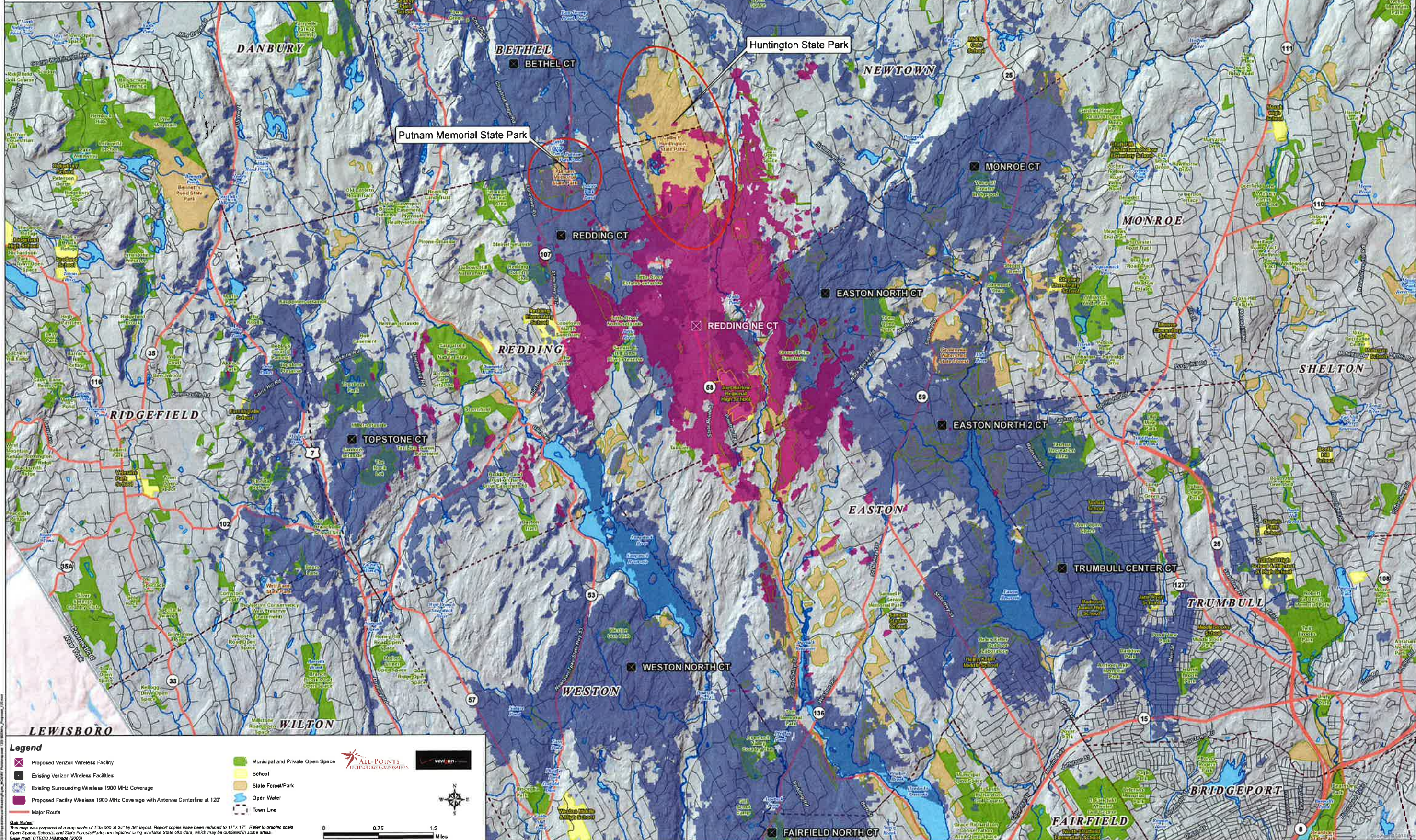
- Legend**
- Proposed Verizon Wireless Facility
 - Existing Verizon Wireless Facilities
 - Existing Surrounding Wireless 850 MHz Coverage
 - Proposed Facility Wireless 850 MHz Coverage with Antenna Centerline at 120'
 - Major Route
 - Municipal and Private Open Space
 - School
 - State Forest/Park
 - Open Water
 - Town Line

Notes:
This map was prepared at a map scale of 1:35,000 at 24" by 36" layout. Report copies have been reduced to 11" x 17". Refer to graphic scale.
Open Spaces, Schools, and State Forests/Parks are depicted using available State GIS data, which may be outdated in some areas.
Base map: CTECO Hillshade (2009)



**Proposed Verizon Wireless 1900 MHz Coverage
with Antenna Centerline Height at 120' AGL
Redding, Connecticut and Surrounding Area
(*Map Scale is 1:35,000)**

Coverage plot assumes 55% site loading on the Cellco system.
Coverage is depicted at a signal threshold of -85 dBm.



Legend

- Proposed Verizon Wireless Facility
- Existing Verizon Wireless Facilities
- Existing Surrounding Wireless 1900 MHz Coverage
- Proposed Facility Wireless 1900 MHz Coverage with Antenna Centerline at 120'
- Major Route
- Municipal and Private Open Space
- School
- State Forest/Park
- Open Water
- Town Line

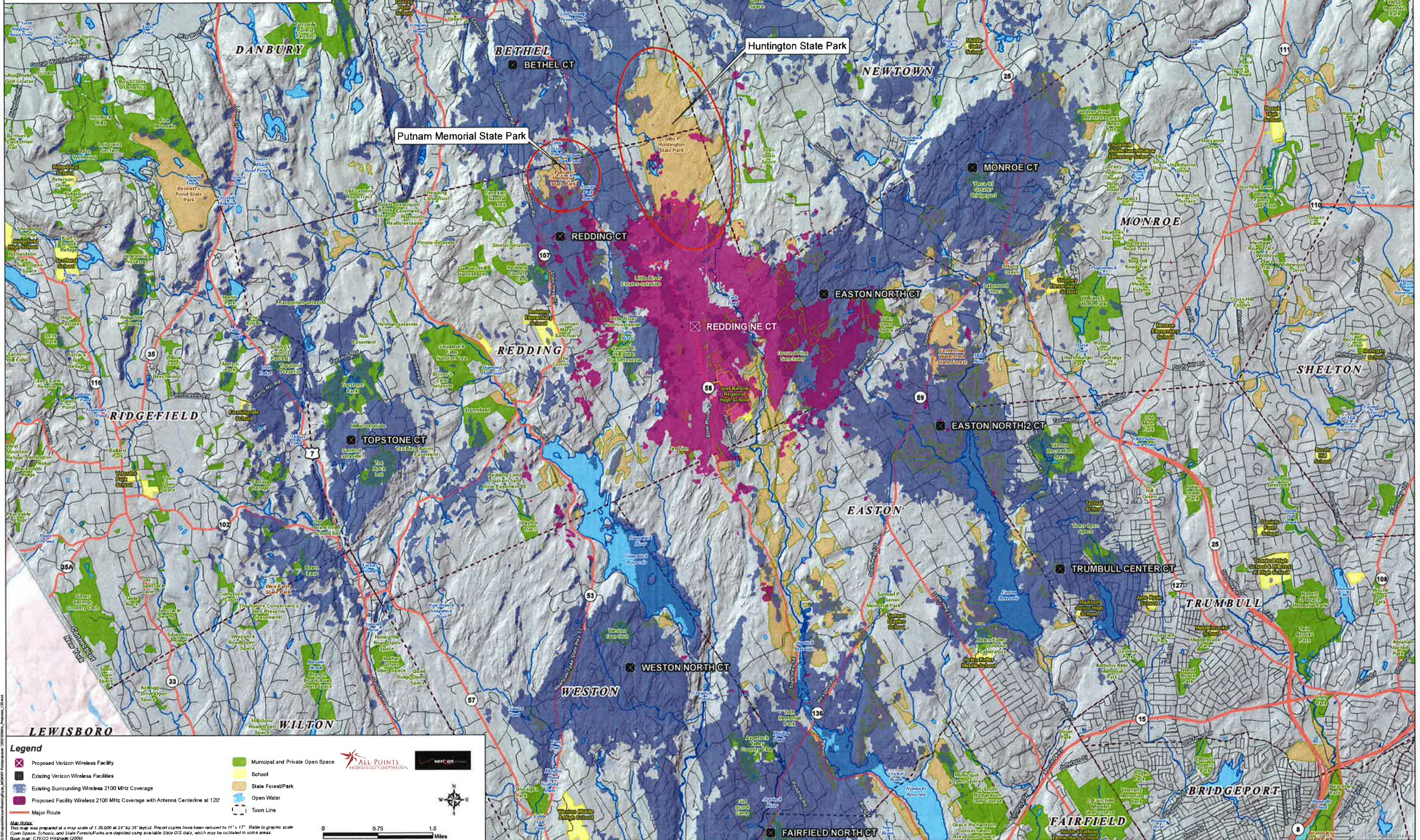
Map Notes:
This map was prepared at a map scale of 1:35,000 at 24" by 36" layout. Report copies have been reduced to 11" x 17". Refer to graphic scale.
Open Space, Schools, and State Forests/Parks are depicted using available State GIS data, which may be outdated in some areas.
Base map: CTECD Hillshade (2000)

Scale: 0 0.75 1.5 Miles

Logos: ALL-POINTS TECHNOLOGICAL CORPORATION, verizon

**Proposed Verizon Wireless 2100 MHz Coverage
with Antenna Centerline Height at 120' AGL
Redding, Connecticut and Surrounding Area
(*Map Scale is 1:35,000)**

Coverage is depicted at a signal threshold of 120 dB Operational Path Loss



Legend

- ✕ Proposed Verizon Wireless Facility
- ✕ Existing Verizon Wireless Facilities
- Existing Surrounding Wireless 2100 MHz Coverage
- Proposed Facility Wireless 2100 MHz Coverage with Antenna Centerline at 120'
- Major Route
- Municipal and Private Open Space
- School
- State Forest/Park
- Open Water
- Town Line

Map Notes:
This map was prepared at a map scale of 1:35,000 at 24" by 35" layout. Recut copies have been reduced to 11" x 17". Refer to graphic scale.
Open States, Schools, and State Forest/Parks are depicted using available State GIS data, which may be outdated in some areas.
Base map: CTECO Hixshade (2006)

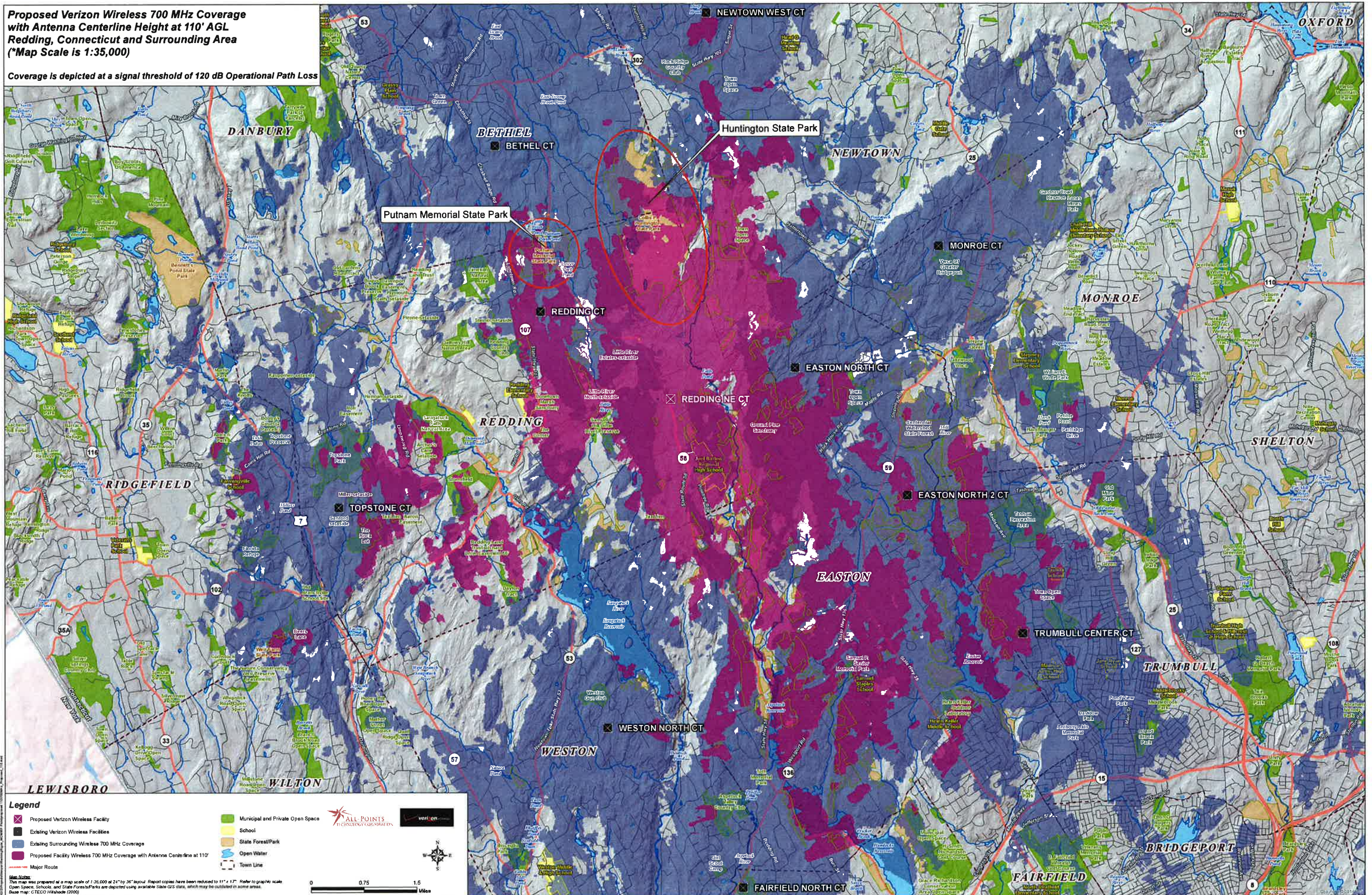
Scale: 0 0.75 1.5 Miles

Logos: ALL-POINTS TECHNOLOGIES CORPORATION, verizon

ATTACHMENT 2

**Proposed Verizon Wireless 700 MHz Coverage
with Antenna Centerline Height at 110' AGL
Redding, Connecticut and Surrounding Area
(*Map Scale is 1:35,000)**

Coverage is depicted at a signal threshold of 120 dB Operational Path Loss



Legend

- Proposed Verizon Wireless Facility
- Existing Verizon Wireless Facilities
- Existing Surrounding Wireless 700 MHz Coverage
- Proposed Facility Wireless 700 MHz Coverage with Antenna Centerline at 110'
- Major Route
- Municipal and Private Open Space
- School
- State Forest/Park
- Open Water
- Town Line

ALL POINTS TECHNOLOGY CORPORATION

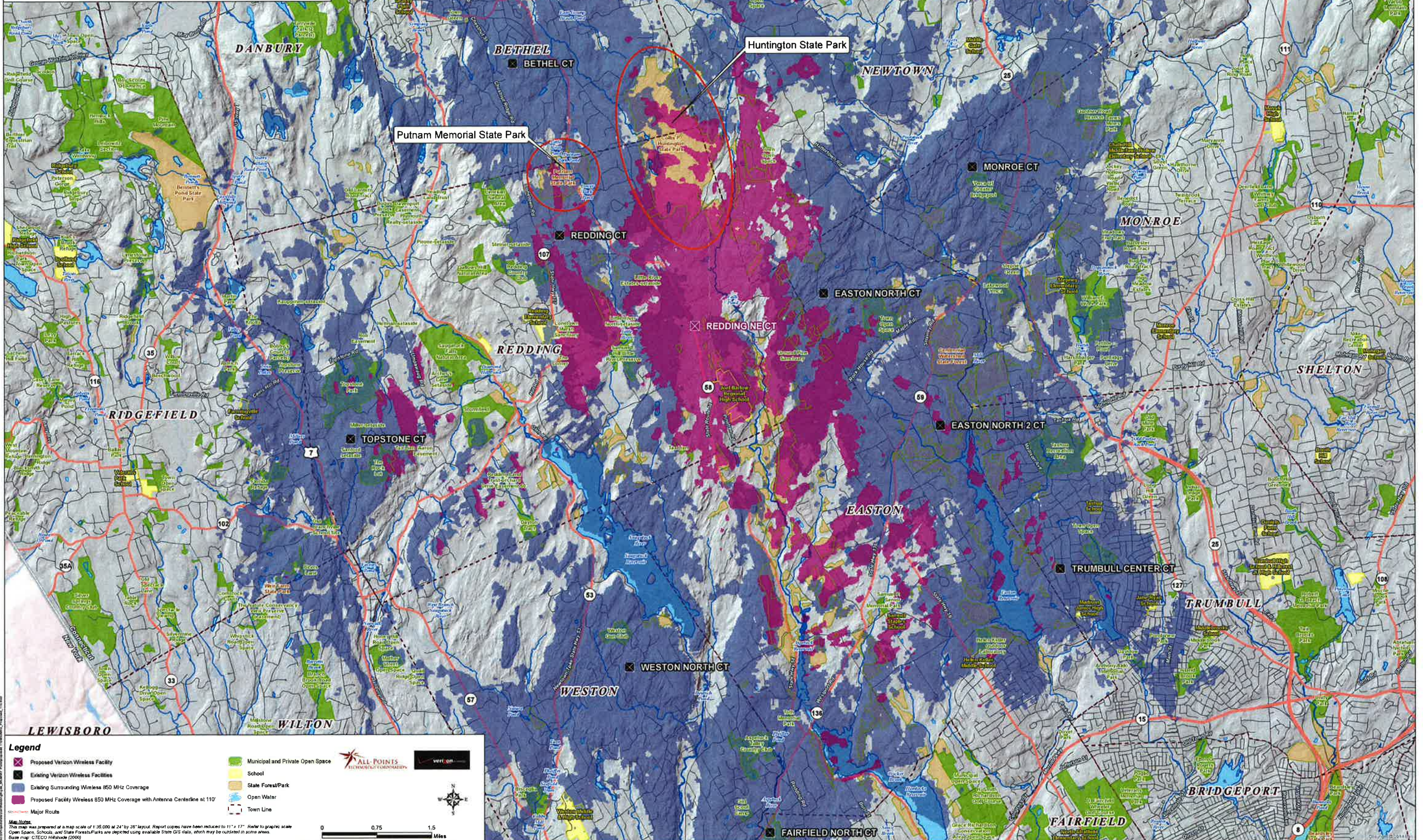
verizon

Map Notes:
This map was prepared at a map scale of 1:35,000 at 24" by 36" layout. Report copies have been reduced to 11" by 17". Refer to graphic scale. Open Space, Schools, and State Forests/Parks are depicted using available State GIS data, which may be outdated in some areas. Base map: CTECO Hexcode (2006)

0 0.75 1.5 Miles

**Proposed Verizon Wireless 850 MHz Coverage
with Antenna Centerline Height at 110' AGL
Redding, Connecticut and Surrounding Area
(*Map Scale is 1:35,000)**

Coverage plot assumes 55% site loading on the Cellco system.
Coverage is depicted at a signal threshold of -85 dBm.



Legend

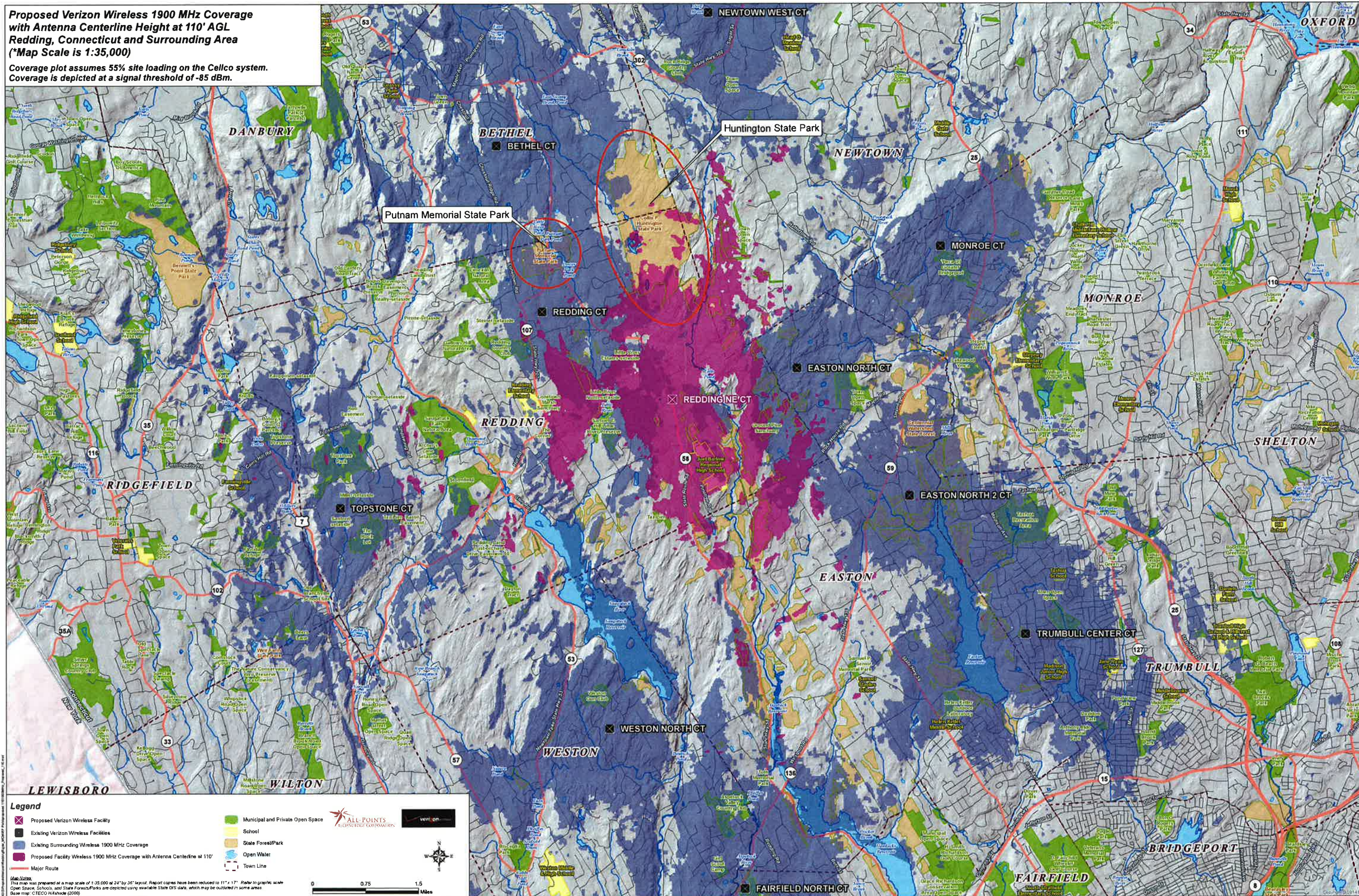
- Proposed Verizon Wireless Facility
- Existing Verizon Wireless Facilities
- Existing Surrounding Wireless 850 MHz Coverage
- Proposed Facility Wireless 850 MHz Coverage with Antenna Centerline at 110'
- Major Route
- Municipal and Private Open Space
- School
- State Forest/Park
- Open Water
- Town Line

Map Notes:
This map was prepared at a map scale of 1:35,000 at 24" by 36" layout. Report copies have been reduced to 11" x 17". Refer to graphic scale. Open Space, Schools, and State Forests/Parks are depicted using available State GIS data, which may be outdated in some areas. Base map: CTECO Hrs/Code (2006)

0 0.75 1.5 Miles

**Proposed Verizon Wireless 1900 MHz Coverage
with Antenna Centerline Height at 110' AGL
Redding, Connecticut and Surrounding Area
(*Map Scale is 1:35,000)**

Coverage plot assumes 55% site loading on the Cellco system.
Coverage is depicted at a signal threshold of -85 dBm.



Legend

- ✕ Proposed Verizon Wireless Facility
- Existing Verizon Wireless Facilities
- Existing Surrounding Wireless 1900 MHz Coverage
- Proposed Facility Wireless 1900 MHz Coverage with Antenna Centerline at 110'
- Major Route
- Municipal and Private Open Space
- School
- State Forest/Park
- Open Water
- Town Line

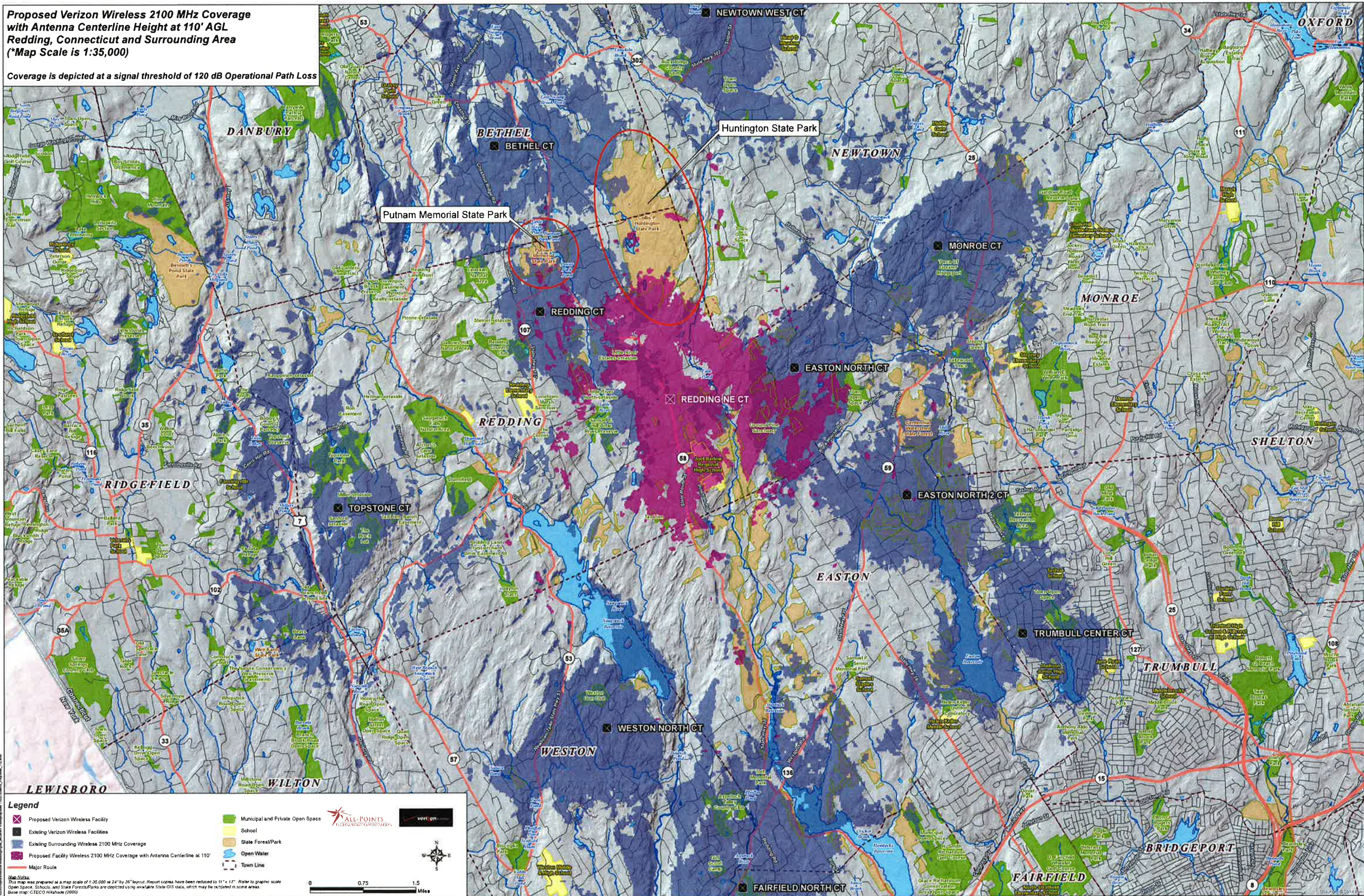
Scale:
This map was prepared at a map scale of 1:35,000 at 24" x 36" layout. Report copies have been reduced to 11" x 17". Refer to graphic scale.
Open Space, Schools, and State Forests/Parks are depicted using available State GIS data, which may be outdated in some areas.
Base map: CTECO Hillshade (2009)

ALL POINTS TECHNOLOGY CORPORATION

0 0.75 1.5 Miles

**Proposed Verizon Wireless 2100 MHz Coverage
with Antenna Centerline Height at 110' AGL
Redding, Connecticut and Surrounding Area
(*Map Scale is 1:35,000)**

Coverage is depicted at a signal threshold of 120 dB Operational Path Loss



Legend

- ✕ Proposed Verizon Wireless Facility
- Existing Verizon Wireless Facilities
- Existing Surrounding Wireless 2100 MHz Coverage
- Proposed Facility Wireless 2100 MHz Coverage with Antenna Centerline at 110'
- Major Route
- Municipal and Private Open Space
- School
- State Forest/Park
- Open Water
- Town Line

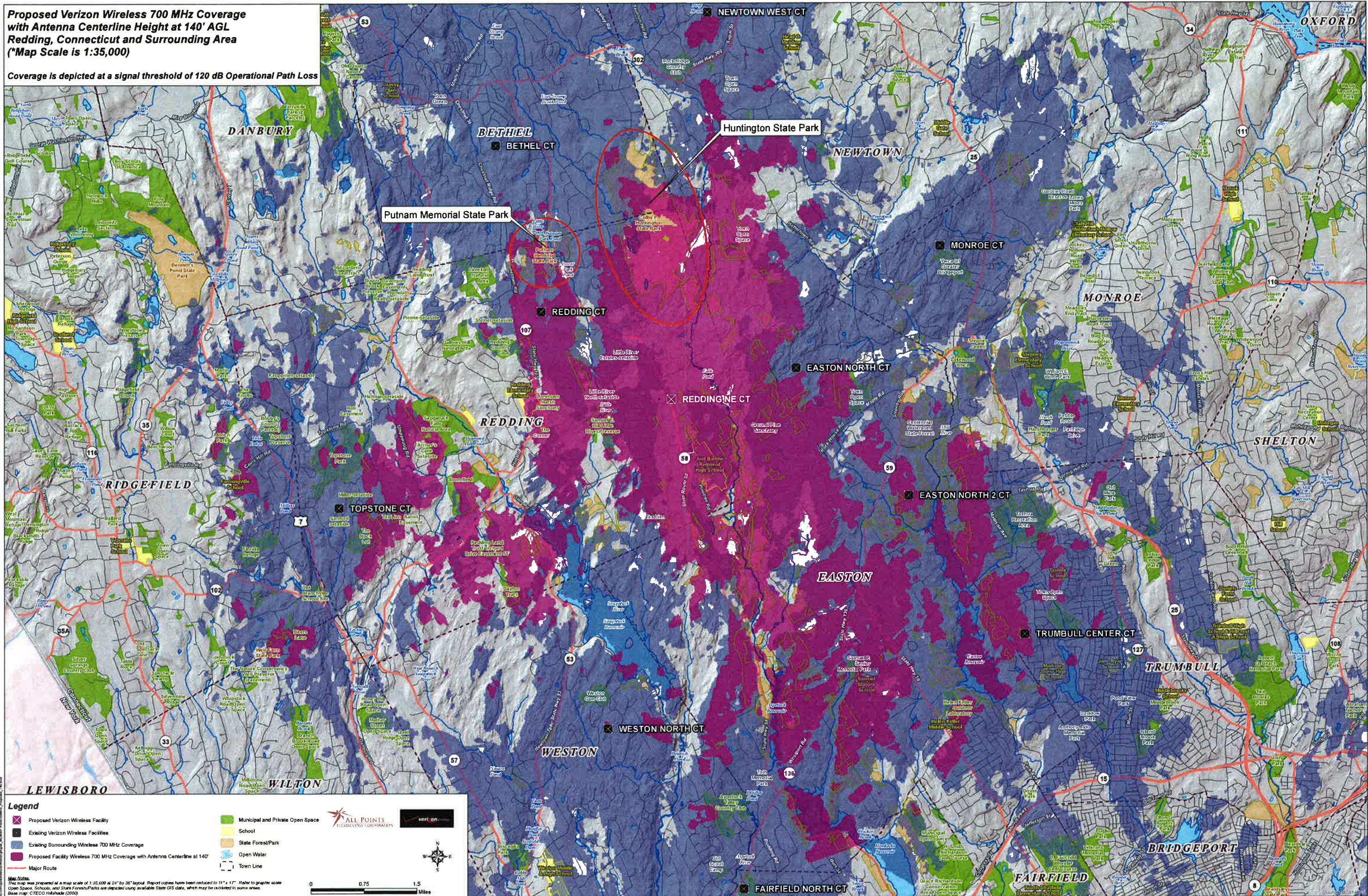
Map Notes:
This map was prepared at a map scale of 1:35,000 at 24" by 36" layout. Report copies have been reduced to 11" x 17" size to graphic scale. Open Space, Schools, and State Forests/Parks are depicted using available State GIS data, which may be outdated in some areas. Base map: CTECO Hixshade (2009)

0 0.75 1.5 Miles

ATTACHMENT 3

**Proposed Verizon Wireless 700 MHz Coverage
with Antenna Centerline Height at 140' AGL
Redding, Connecticut and Surrounding Area
(*Map Scale is 1:35,000)**

Coverage is depicted at a signal threshold of 120 dB Operational Path Loss



Legend

- Proposed Verizon Wireless Facility
- Existing Verizon Wireless Facilities
- Existing Surrounding Wireless 700 MHz Coverage
- Proposed Facility Wireless 700 MHz Coverage with Antenna Centerline at 140'
- Major Route
- Municipal and Private Open Space
- School
- State Forest/Park
- Open Water
- Town Line

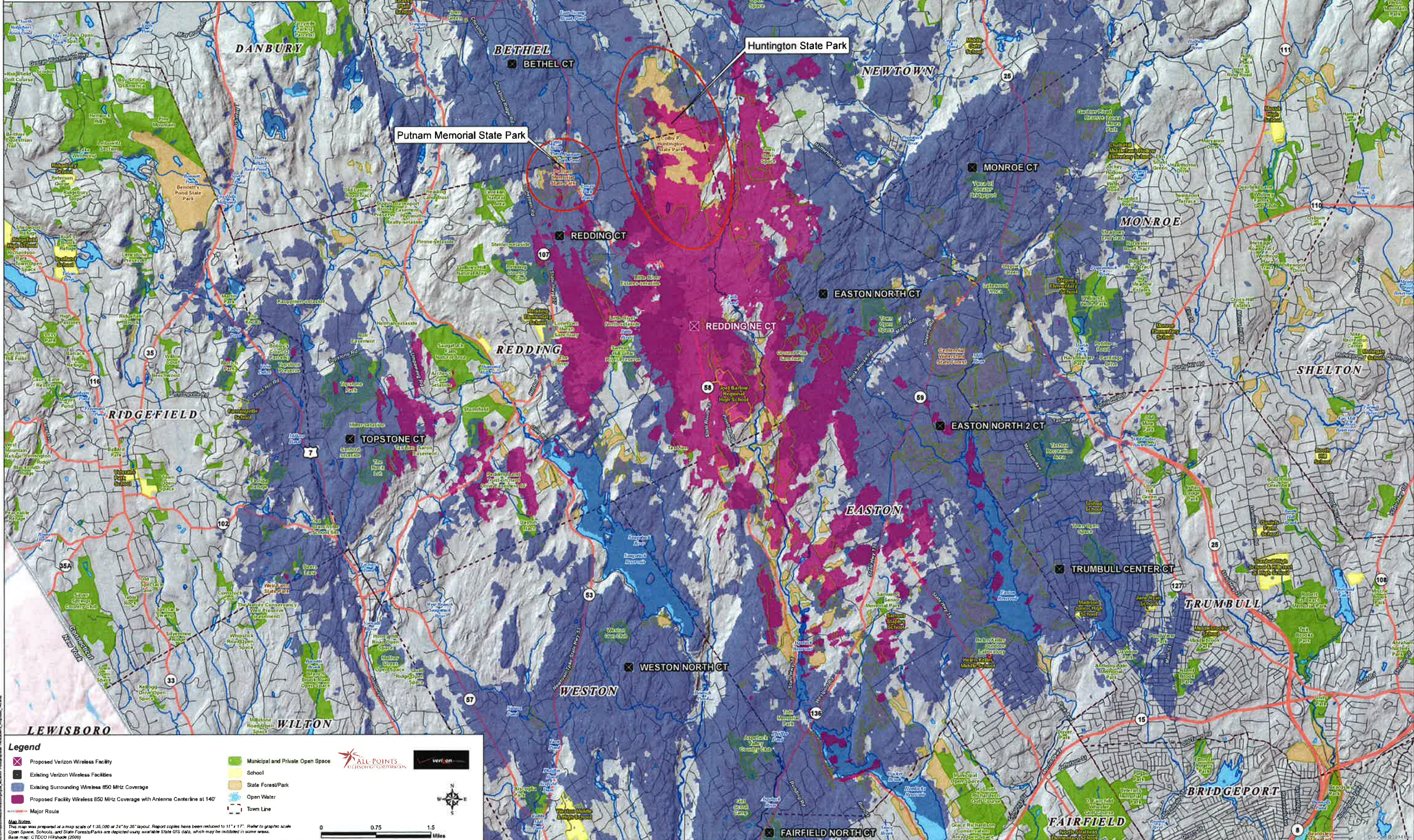
Map Notes:
This map was prepared at a map scale of 1:35,000 at 24" by 36" layout. Report copies have been reduced to 11" x 17". Refer to graphic scale. Open Space, Schools, and State Forest/Parks are depicted using available State GIS data, which may be outdated in some areas. Base map: CTECO Hatched (2009)

Scale: 0 0.75 1.5 Miles

Logos: ALL POINTS TECHNOLOGY CORPORATION, verizon

**Proposed Verizon Wireless 850 MHz Coverage
with Antenna Centerline Height at 140' AGL
Redding, Connecticut and Surrounding Area
(*Map Scale is 1:35,000)**

Coverage plot assumes 55% site loading on the Cellco system.
Coverage is depicted at a signal threshold of -85 dBm.



Legend

- Proposed Verizon Wireless Facility
- Existing Verizon Wireless Facilities
- Existing Surrounding Wireless 850 MHz Coverage
- Proposed Facility Wireless 850 MHz Coverage with Antenna Centerline at 140'
- Major Route
- Municipal and Private Open Space
- School
- State Forest/Park
- Open Water
- Town Line

ALL-POINTS
THE INSURANCE CORPORATION

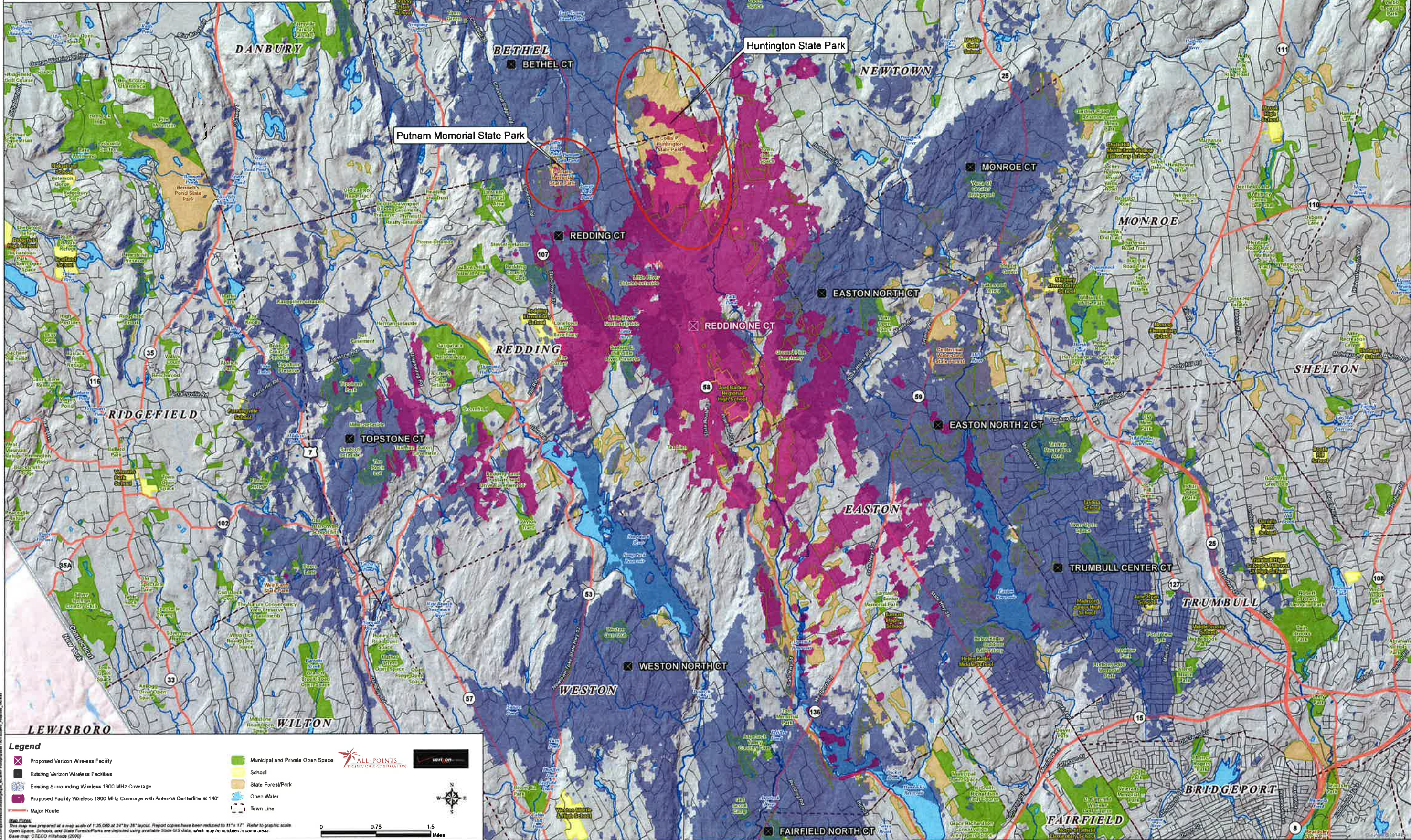
verizon

Map Notes:
This map was prepared at a map scale of 1:35,000 at 24" by 36" layout. Report copies have been reduced to 11" by 17". Refer to graphic scale.
Open Space, Schools, and State Forests/Parks are depicted using available State GIS data, which may be outdated in some areas.
Base map: CTECO Hillshade (2009)

0 0.75 1.5 Miles

**Proposed Verizon Wireless 1900 MHz Coverage
with Antenna Centerline Height at 140' AGL
Redding, Connecticut and Surrounding Area
(*Map Scale is 1:35,000)**

Coverage plot assumes 55% site loading on the Cellco system.
Coverage is depicted at a signal threshold of -85 dBm.



Legend

- Proposed Verizon Wireless Facility
- Existing Verizon Wireless Facilities
- Existing Surrounding Wireless 1900 MHz Coverage
- Proposed Facility Wireless 1900 MHz Coverage with Antenna Centerline at 140'
- Major Route
- Municipal and Private Open Space
- School
- State Forest/Park
- Open Water
- Town Line

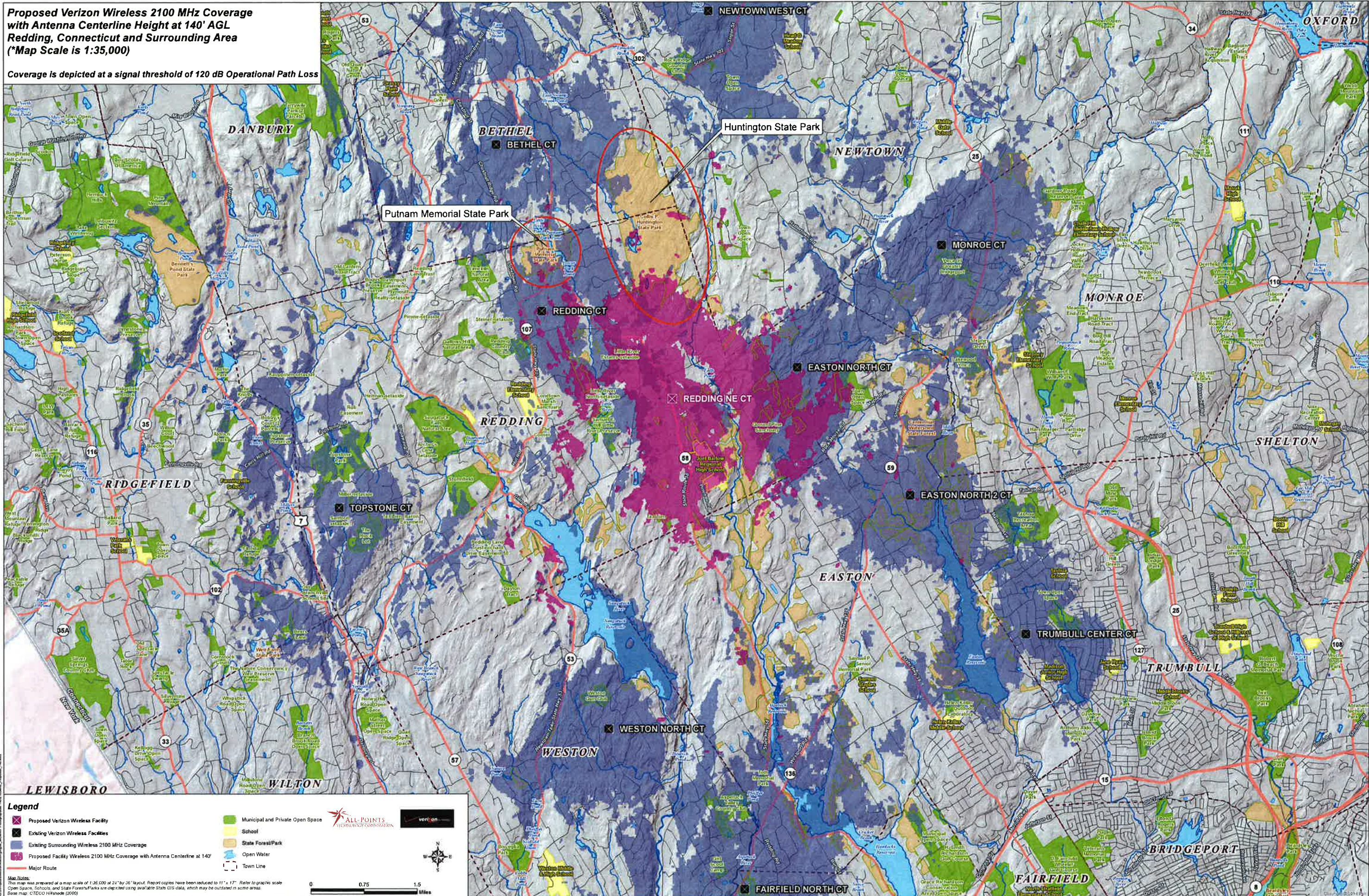
Map Notes:
This map was prepared at a map scale of 1:35,000 at 24" by 36" layout. Report copies have been reduced to 11" x 17". Refer to graphic scale.
Open Space, Schools, and State Forest/Parks are depicted using available State GIS data, which may be outdated in some areas.
Base map: CTECO Hillshade (2000)

0 0.75 1.5
Miles

© 2010 Verizon Wireless. All rights reserved. This map is a service mark of Verizon Wireless. All other marks are the property of their respective owners.

**Proposed Verizon Wireless 2100 MHz Coverage
with Antenna Centerline Height at 140' AGL
Redding, Connecticut and Surrounding Area
(*Map Scale is 1:35,000)**

Coverage is depicted at a signal threshold of 120 dB Operational Path Loss



Legend

- ✖ Proposed Verizon Wireless Facility
- ✖ Existing Verizon Wireless Facilities
- Existing Surrounding Wireless 2100 MHz Coverage
- Proposed Facility Wireless 2100 MHz Coverage with Antenna Centerline at 140'
- Major Route
- Municipal and Private Open Space
- School
- State Forest/Park
- Open Water
- Town Line

Map Notes:
This map was prepared at a map scale of 1:35,000 at 24" by 36" layout. Report copies have been reduced to 11" x 17". Refer to graphic scale. Open Spaces, Schools, and State Forests/Parks are depicted using available State GIS data, which may be outdated in some areas. Base map: CTECO HixNode (2009)

0 0.75 1.5 Miles

