

280 Trumbull Street
Hartford, CT 06103-3597
Main (860) 275-8200
Fax (860) 275-8299
kbaldwin@rc.com
Direct (860) 275-8345

Also admitted in Massachusetts

October 30, 2013

Via Federal Express

Timothy M. Herbst
First Selectman
Town of Trumbull
5866 Main Street
Trumbull, CT 06611

Re: **Submission of Technical Information Concerning Proposal to Construct a
Wireless Telecommunications Facility at 60 Commerce Drive in the Town of
Trumbull, Connecticut**

Dear Mr. Herbst:

This firm represents Cellco Partnership d/b/a Verizon Wireless (“Cellco”), in its proposal to construct a new wireless telecommunications facility on an approximately 12 acre parcel at 60 Commerce Drive in Trumbull. For the purposes of this filing, the proposed telecommunications facility is known as Cellco’s “Trumbull SE 4 Facility”. This technical report is submitted pursuant to Connecticut General Statutes (“Conn. Gen. Stat.”) § 16-50^l(e), which establishes local input requirements for the siting of a wireless telecommunications facility under the jurisdiction of the Connecticut Siting Council (the “Council”).



Law Offices

BOSTON

PROVIDENCE

HARTFORD

NEW LONDON

STAMFORD

WHITE PLAINS

NEW YORK CITY

ALBANY

SARASOTA

www.rc.com

Correspondence and/or communications regarding the information contained in this report should be addressed to:

Sandy M. Carter, Regulatory Manager
Verizon Wireless
99 East River Drive
East Hartford, CT 06108

A copy of all such correspondence or communications should also be sent to Cellco’s attorneys:

ROBINSON & COLE LLP

Timothy M. Herbst
October 30, 2013
Page 2

Kenneth C. Baldwin, Esq.
Robinson & Cole LLP
280 Trumbull Street
Hartford, CT 06103-3597

Cellco intends to submit an application to the Council for a Certificate of Environmental Compatibility and Public Need (“Certificate”) for the construction, maintenance and operation of a wireless telecommunications facility in the Town of Trumbull (the “Town” or “Trumbull”). The Trumbull SE 4 facility would interact with Cellco’s existing Trumbull 2, Trumbull East and Stratford North cell sites.

The Trumbull SE 4 cell site would provide enhanced coverage and, more importantly, provide significant capacity relief to its network in southeast portions of Trumbull, particularly along portions of Route 8, in the Trumbull Corporate Park and in the surrounding residential neighborhoods. The Trumbull 2, Stratford North and, to a lesser extent, Trumbull East cell sites are currently operating at their respective capacity limits. Coverage plots for Cellco’s existing cell sites in the area, alone and together with the proposed Trumbull SE 4 Facility are included in Attachment 1. The significant areas of overlapping service shown on these plots help illustrate the significant capacity benefits of the Trumbull SE 4 Facility.

Cell Site Information

The proposed Trumbull SE 4 Facility would be located in the northerly portion of an approximately 12 acre parcel at 60 Commerce Drive in Trumbull (the “Property”). The Property is owned by Pilot Corporation of America and is located in the Trumbull Corporate Park (Industrial I-L3 zone district). The Property is currently occupied by two office buildings and related parking areas.

Cellco proposes to construct a wireless telecommunications facility on the northerly side of the existing three-story office building on site. The facility will consist of an 80-foot monopole tower and a 12’ x 30’ shelter located within a 24’ x 77’ fenced compound. Cellco will install up to fifteen (15) panel-type antennas at the centerline height of 80-feet above ground level (“AGL”). Cellco’s antennas would extend to an overall height of approximately 84 feet AGL. Equipment associated with the Cellco’s antennas and a diesel-fueled backup generator would be located inside its 12’ x 30’ shelter. Access to the Trumbull SE 4 Facility would extend from Commerce Drive over an existing paved driveway and parking areas on the Property. A short gravel driveway extension will connect the parking area to the cell site.



Timothy M. Herbst
October 30, 2013
Page 3

Project plans for the Trumbull SE 4 Facility are included in Attachment 2.

Connecticut Siting Council Jurisdiction

Municipal jurisdiction over the siting of the proposed telecommunications facility described in this report is pre-empted by provisions of the Public Utilities Environmental Standards Act (“PUESA”), Conn. Gen. Stat. § 16-50g *et seq.* The PUESA gives exclusive jurisdiction over the location, type and modification of telecommunications towers, to the Council (Conn. Gen. Stat. § 16-50x(a); 16-50i(a)(6)). Accordingly, the telecommunications facility described in this report is exempt from the Town’s land use regulations.

Upon receipt of an application, the Council will assign a docket number and, following a completeness review, set a hearing date. At that time, the Town may choose to become an intervenor or party in the proceeding. Other procedures followed by the Council include serving the applicant and other participants with interrogatories, holding a pre-hearing conference, and conducting a public hearing. The public hearing would be held at a location in the Town. Following the public hearing, the Council will issue findings of fact, an opinion and a decision and order. Prior to construction, the Council will also require the Applicant to submit a development and management plan (“D&M Plan”) which is, in essence, a final site development plan showing the details of the facility including any conditions imposed by the Council. These procedures are also outside the scope of the Town’s jurisdiction and are governed by the Connecticut General Statutes, the Regulations of Connecticut State Agencies, and the Council’s Rules of Practice. If the Council approves the cell site described in this report, Cellco will submit to the Town’s Building Official an application for approval of a local building permit. Under Section 16-50x of the General Statutes, which provides for the exclusive jurisdiction of the Council, the building official must honor the Council’s decision.

Municipal Consultation Process

Pursuant to Section 16-50j of the General Statutes, Town officials are entitled to receive technical information regarding the proposed telecommunications facility at least ninety (90) days prior to the filing of an application with the Council. This technical report is provided to the Town in accordance with these provisions and includes information on the need for wireless service in the area; the location of existing wireless facilities in and around Trumbull; details of the proposed facility; the location of alternative sites considered and rejected; the location of schools and commercial day care facilities in the area and the aesthetic impacts of the facility on those schools and day care facilities, if any, a description of the site selection process,



Timothy M. Herbst
October 30, 2013
Page 4

and a discussion of potential environmental effects associated with the proposed facility.

Not later than sixty (60) days after the initial consultation meeting, the municipality may, in cooperation with the prospective applicant, hold a public information hearing on the facility proposal. If such a hearing is held, the applicant must notify all abutting landowners and publish notice in a newspaper of general circulation in the municipality at least fifteen (15) days prior to the hearing.

Not later than thirty (30) days after the initial consultation meeting, the municipality may present the prospective applicant with alternative sites, including municipal parcels, for its consideration. If not previously considered, these alternatives will be evaluated and discussed in its application to the Council.

Pursuant to Section 16-50^l(e) of the General Statutes, Cellco must provide a summary of the Town's comments and recommendations, if any, to the Council within fifteen (15) days of the filing of an application.

Public Need

The primary purpose for the Trumbull SE 4 Facility described above is to provide enhanced wireless services and increased network capacity in the southeast portion of Trumbull, particularly along Route 8 in the Trumbull Corporate Park and the surrounding residential neighborhoods. Cellco's existing Trumbull 2, Stratford North and, to a lesser extent, Trumbull East cell sites are currently operating at their respective capacity limits. The Trumbull SE 4 Facility, described in this report, would improve significantly, Cellco's ability to provide reliable wireless services in southeast Trumbull.

Environmental Effects

In our experience, the primary impact of a wireless facility such as the proposed Trumbull SE 4 Facility is visual. The visual impact of the proposed facility will vary from place to place around the site location, depending upon factors such as vegetation, topography, distance from the towers, and the location of buildings in the sight-line of the cell site. The Trumbull SE 4 Facility will be located in the northerly portion of the Merritt Industrial Park, a large industrial and office park development along the east side of Route 8 and north of Route 15.

To more fully assess the visual impact of the Trumbull SE 4 Facility, Cellco's consultant, All-Points Technology Corporation ("APT") has prepared a Preliminary



Timothy M. Herbst
October 30, 2013
Page 5

Visibility Analysis. This analysis indicates that a majority of the year-round visibility of the tower would be limited to the area immediately surrounding the proposed facility location and along select portions of nearby local roads within and outside the Trumbull Corporate Park. (See Attachment 3). A more detailed visual report is being prepared and will be included in Cellco's application to the Council.

Pursuant to the provisions of Conn. Gen. Stat. § 16-50p(a)(3)(G), new telecommunications facilities must be located at least 250 feet from schools (defined in C.G.S. §10-154a) and commercial day care facilities (defined in C.G.S. §19a-77(a)(1)) unless the location selected is acceptable to the Town's chief elected official or the Council finds that the facility will not have a substantial adverse effect on the aesthetics or scenic quality of the neighborhood where the school or commercial day care use is located. The proposed Trumbull SE 4 tower is not located within 250 feet of any building containing a school or commercial day care facility.

Based on field surveys, Cellco has determined that the construction of the Trumbull SE 4 Facility will have no impacts on inland wetlands or watercourses, within or near the tower compound. Cellco anticipates that all other physical environmental effects associated with the proposed facility would be minimal.

Power Density

The Federal Communications Commission ("FCC") has adopted a standard (the "Standard") for exposure of radio frequency ("RF") emissions from telecommunications facilities like the Trumbull SE 4 Facility. To ensure compliance with the Standard, Cellco has performed a worst-case power density calculation for the proposed facility according to the methodology described in FCC Office of Science and Technology Bulletin No. 65 ("OST Bulletin 65"). This calculation is a conservative, worst-case approximation of RF emissions at the closest accessible point to the antenna (i.e., the base of the tower), and with all antennas transmitting simultaneously on all channels at full power. The worst-case calculated RF emissions level for Cellco's antennas at the 80-foot level on the tower would be 98.35% of the FCC Standard. (See Attachment 4.) Actual RF emissions levels from this facility will be far less than these "worst-case" calculations.

Scenic Natural Historic or Recreational Impacts

To further assess the environmental impacts of the proposed facility, Cellco is working with its consultant team to prepare a National Environmental Policy Act ("NEPA") Environmental Screening Checklist (the "NEPA Checklist") and other related environmental reviews to determine if the facility will have any significant



Timothy M. Herbst
October 30, 2013
Page 6

adverse environmental effects. The NEPA Checklist will include information from the Environmental and Geographic Information Center of the Connecticut Department of Energy and Environmental Protection (“DEEP”), the U.S. Fish and Wildlife Service (“USFWS”) and the State Historic Preservation Officer (“SHPO”). Copies of the DEEP, USFWS and the SHPO determinations will also be submitted as a part of the Council Application.

Site Search Process

Cellco conducted a search for suitable cell site locations in southeast portions of Trumbull and identified the Property as a site that would satisfy its wireless service objectives in the area. In addition to the proposed location, Cellco identified and investigated six (6) alternative facility locations in southeast Trumbull all within or close to the Trumbull Corporate Park. With the exception of the Property, each of the alternative sites considered were rejected by the landowner who was unwilling to enter into a lease for a cell site or eliminated due to some concerns for significant environmental effects. A complete list of other potential cell sites investigated is included in Attachment 5.

Tower Sharing

As stated above, Cellco intends to build a tower that is capable of supporting its antennas and those of additional wireless telecommunications providers, including Town of Trumbull emergency service providers, if a need exists. The provision to share the tower is consistent with the intent of the General Assembly when it adopted Conn. Gen. Stat. § 16-50aa and with Council policy. The availability of space on the proposed tower may reduce, if not eliminate, the need for additional towers in southeast Trumbull for the foreseeable future.

Conclusion

This technical report is submitted in accordance with Conn. Gen. Stat. § 16-50~~l~~ which requires Cellco to supply the Town with information regarding its proposed Trumbull SE 4 Facility. This report includes information regarding the site selection process, public need, and the potential environmental impacts of the facility. Cellco submits that its proposed Trumbull SE 4 Facility would not have any significant adverse environmental effects. Moreover, Cellco submits that the public need for high quality wireless service, and a competitive framework for providing such service has been determined by the FCC to be in the public interest and that such public need far outweighs any perceived environmental effects of the proposed facility.

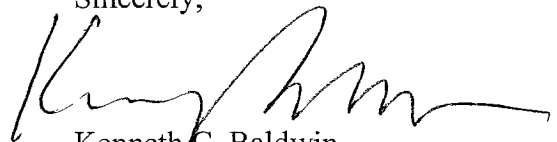


ROBINSON & COLE^{LLP}

Timothy M. Herbst
October 30, 2013
Page 7

Please contact me if you have any additional questions regarding the proposed facility.

Sincerely,



Kenneth C. Baldwin

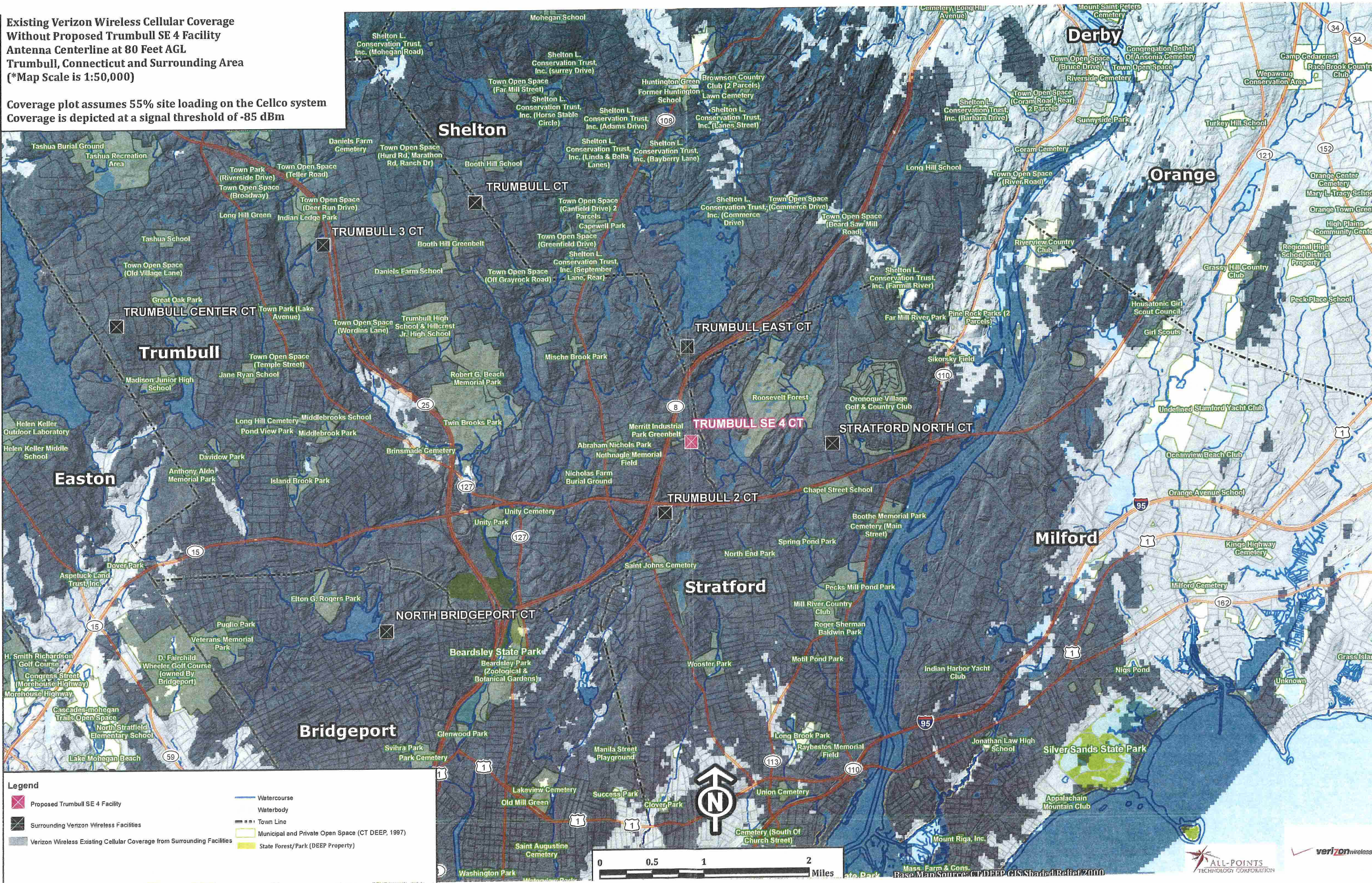
Enclosures
Copy to:
Sandy M. Carter



ATTACHMENT 1

**Existing Verizon Wireless Cellular Coverage
Without Proposed Trumbull SE 4 Facility
Antenna Centerline at 80 Feet AGL
Trumbull, Connecticut and Surrounding Area
(*Map Scale is 1:50,000)**

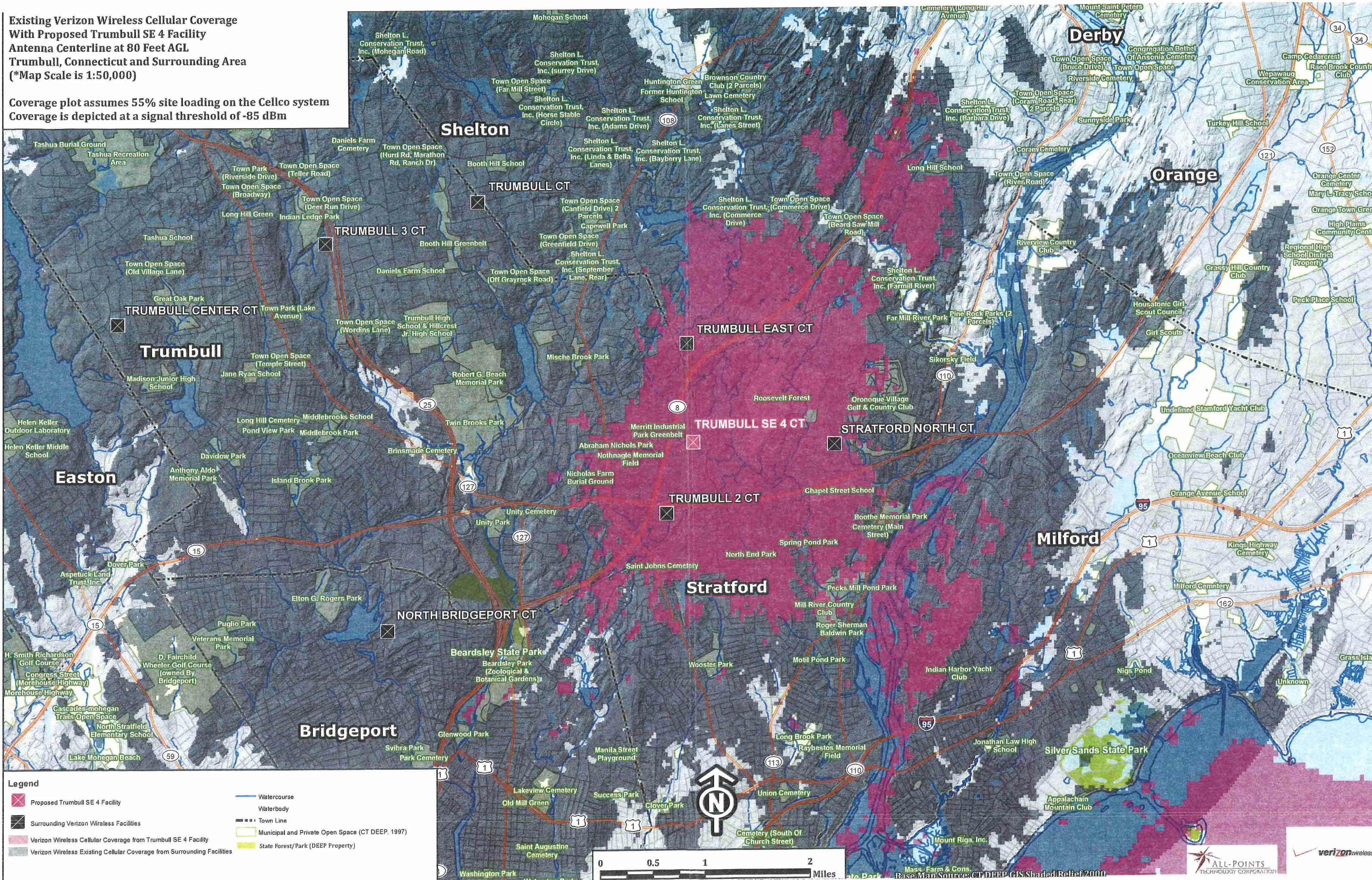
Coverage plot assumes 55% site loading on the Cellco system
Coverage is depicted at a signal threshold of -85 dBm



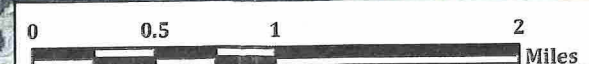
- Legend**
- Proposed Trumbull SE 4 Facility
 - Surrounding Verizon Wireless Facilities
 - Verizon Wireless Existing Cellular Coverage from Surrounding Facilities
 - Watercourse
 - Waterbody
 - Town Line
 - Municipal and Private Open Space (CT DEEP, 1997)
 - State Forest/Park (DEBP Property)

**Existing Verizon Wireless Cellular Coverage
With Proposed Trumbull SE 4 Facility
Antenna Centerline at 80 Feet AGL
Trumbull, Connecticut and Surrounding Area
(*Map Scale is 1:50,000)**

Coverage plot assumes 55% site loading on the Cellco system
Coverage is depicted at a signal threshold of -85 dBm

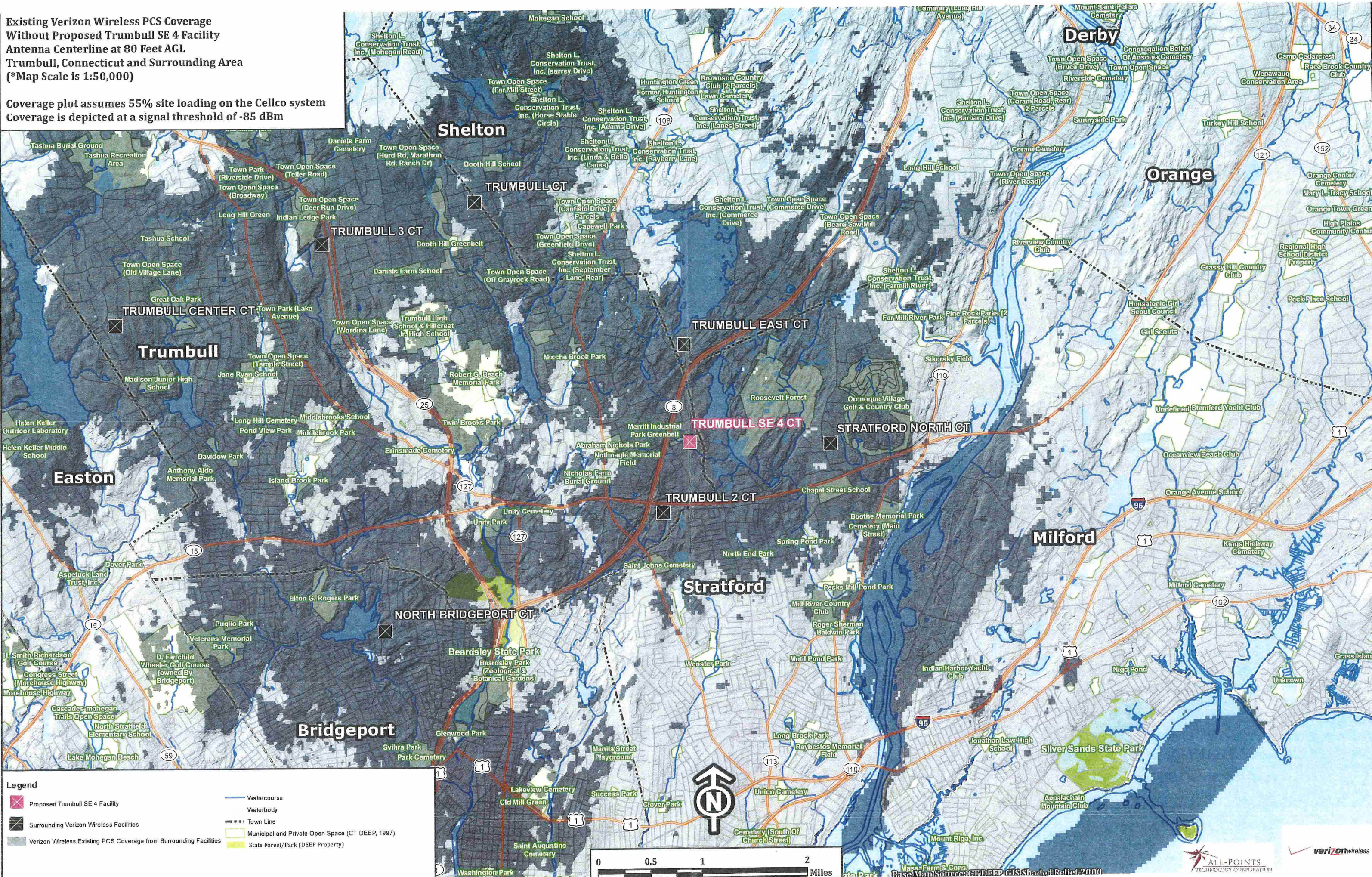


- Legend**
- Proposed Trumbull SE 4 Facility
 - Surrounding Verizon Wireless Facilities
 - Verizon Wireless Cellular Coverage from Trumbull SE 4 Facility
 - Verizon Wireless Existing Cellular Coverage from Surrounding Facilities
 - Watercourse
 - Waterbody
 - Town Line
 - Municipal and Private Open Space (CT DEEP, 1997)
 - State Forest/Park (DEEP Property)

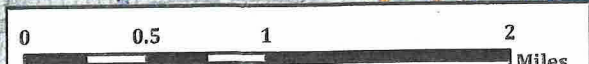


**Existing Verizon Wireless PCS Coverage
Without Proposed Trumbull SE 4 Facility
Antenna Centerline at 80 Feet AGL
Trumbull, Connecticut and Surrounding Area
(*Map Scale is 1:50,000)**

Coverage plot assumes 55% site loading on the Cellco system
Coverage is depicted at a signal threshold of -85 dBm



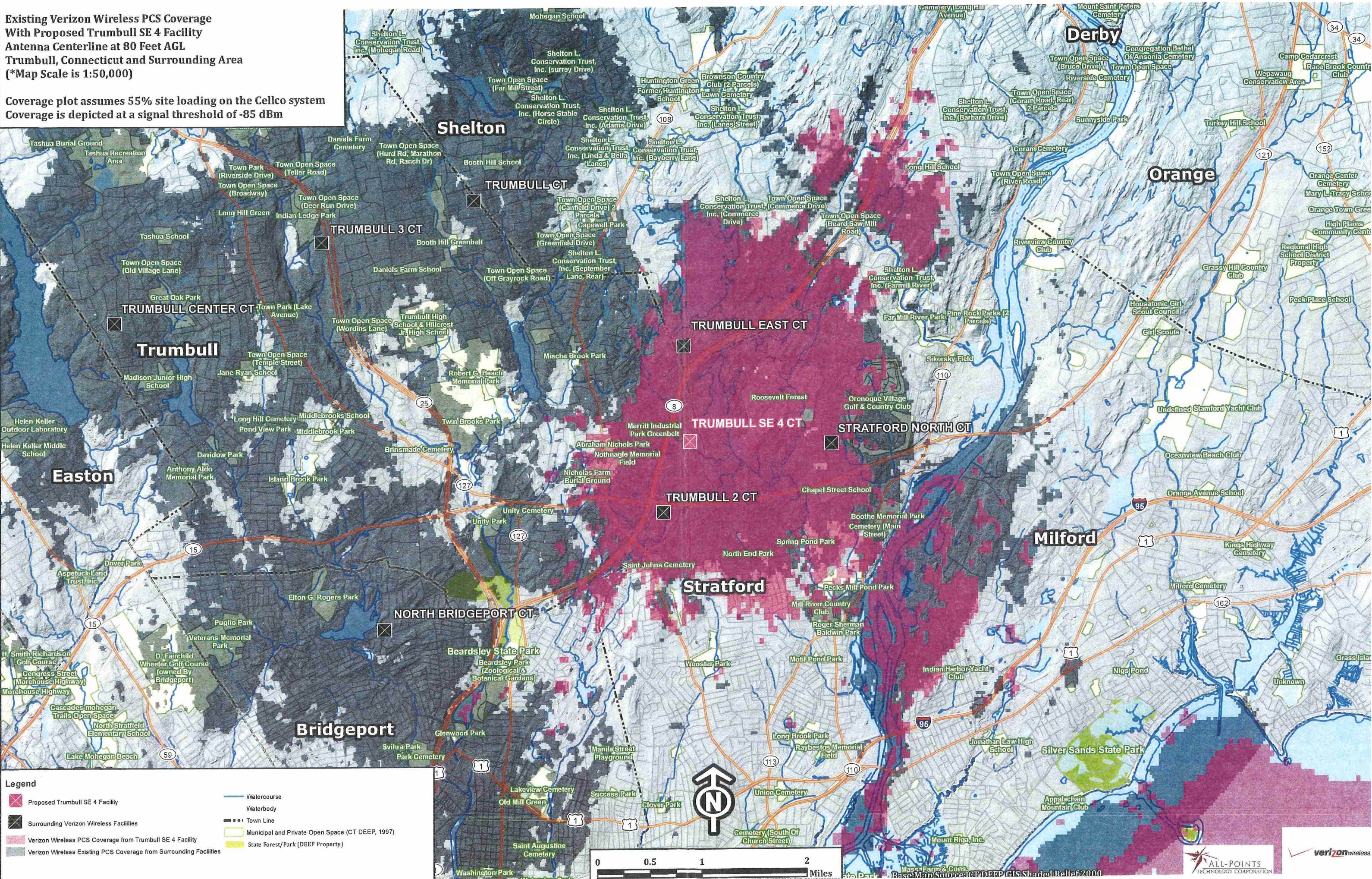
- Legend**
- Proposed Trumbull SE 4 Facility
 - Surrounding Verizon Wireless Facilities
 - Verizon Wireless Existing PCS Coverage from Surrounding Facilities
 - Watercourse
 - Waterbody
 - Town Line
 - Municipal and Private Open Space (CT DEEP, 1997)
 - State Forest/Park (DEEP Property)



Base Map Source: CT DEEP GIS Shaded Relief 2000

**Existing Verizon Wireless PCS Coverage
With Proposed Trumbull SE 4 Facility
Antenna Centerline at 80 Feet AGL
Trumbull, Connecticut and Surrounding Area
(*Map Scale is 1:50,000)**

Coverage plot assumes 55% site loading on the Cellco system
Coverage is depicted at a signal threshold of -85 dBm

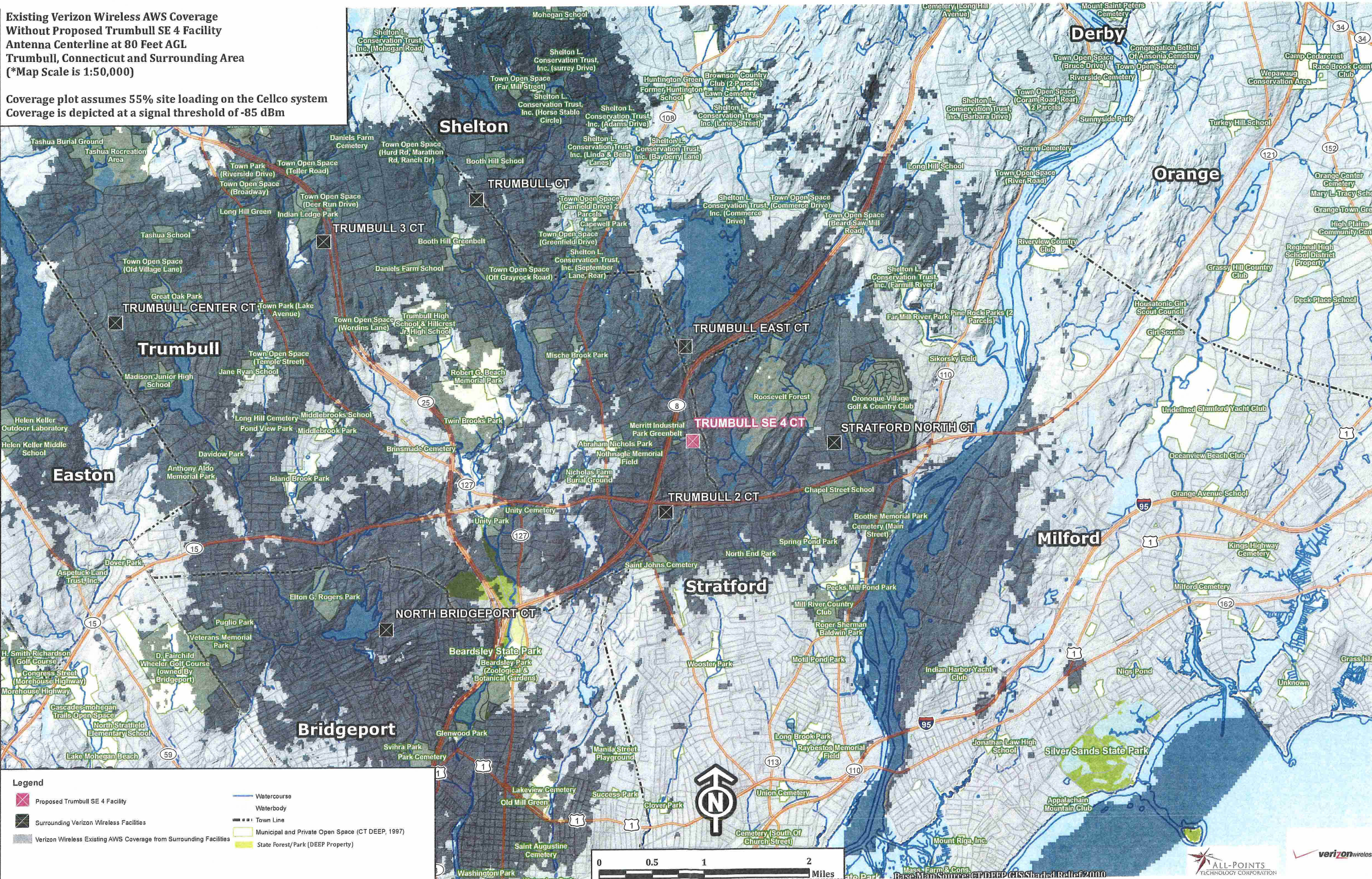


- Legend**
- Proposed Trumbull SE 4 Facility
 - Surrounding Verizon Wireless Facilities
 - Verizon Wireless PCS Coverage from Trumbull SE 4 Facility
 - Verizon Wireless Existing PCS Coverage from Surrounding Facilities
 - Watercourse
 - Waterbody
 - Town Line
 - Municipal and Private Open Space (CT DEEP, 1997)
 - State Forest/Park (DEEP Property)

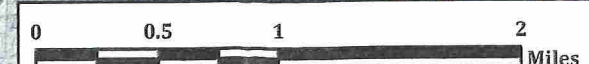


**Existing Verizon Wireless AWS Coverage
Without Proposed Trumbull SE 4 Facility
Antenna Centerline at 80 Feet AGL
Trumbull, Connecticut and Surrounding Area
(*Map Scale is 1:50,000)**

Coverage plot assumes 55% site loading on the Cellco system
Coverage is depicted at a signal threshold of -85 dBm

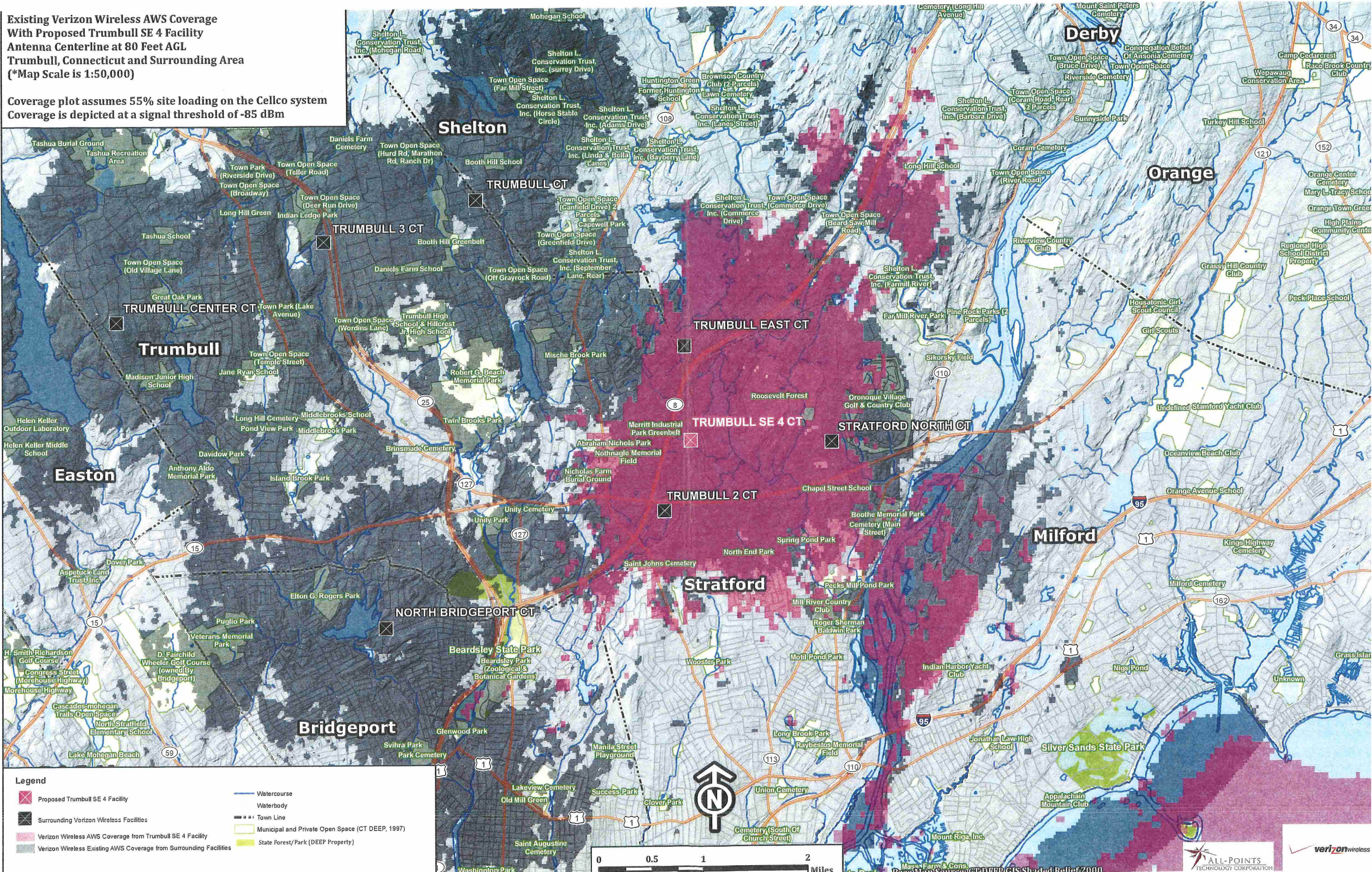


- Legend**
- Proposed Trumbull SE 4 Facility
 - Surrounding Verizon Wireless Facilities
 - Verizon Wireless Existing AWS Coverage from Surrounding Facilities
 - Watercourse
 - Waterbody
 - Town Line
 - Municipal and Private Open Space (CT DEEP, 1997)
 - State Forest/Park (DEEP Property)

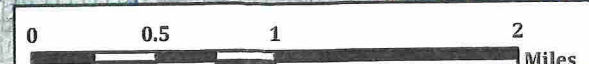


**Existing Verizon Wireless AWS Coverage
With Proposed Trumbull SE 4 Facility
Antenna Centerline at 80 Feet AGL
Trumbull, Connecticut and Surrounding Area
(*Map Scale is 1:50,000)**

Coverage plot assumes 55% site loading on the Cellco system
Coverage is depicted at a signal threshold of -85 dBm

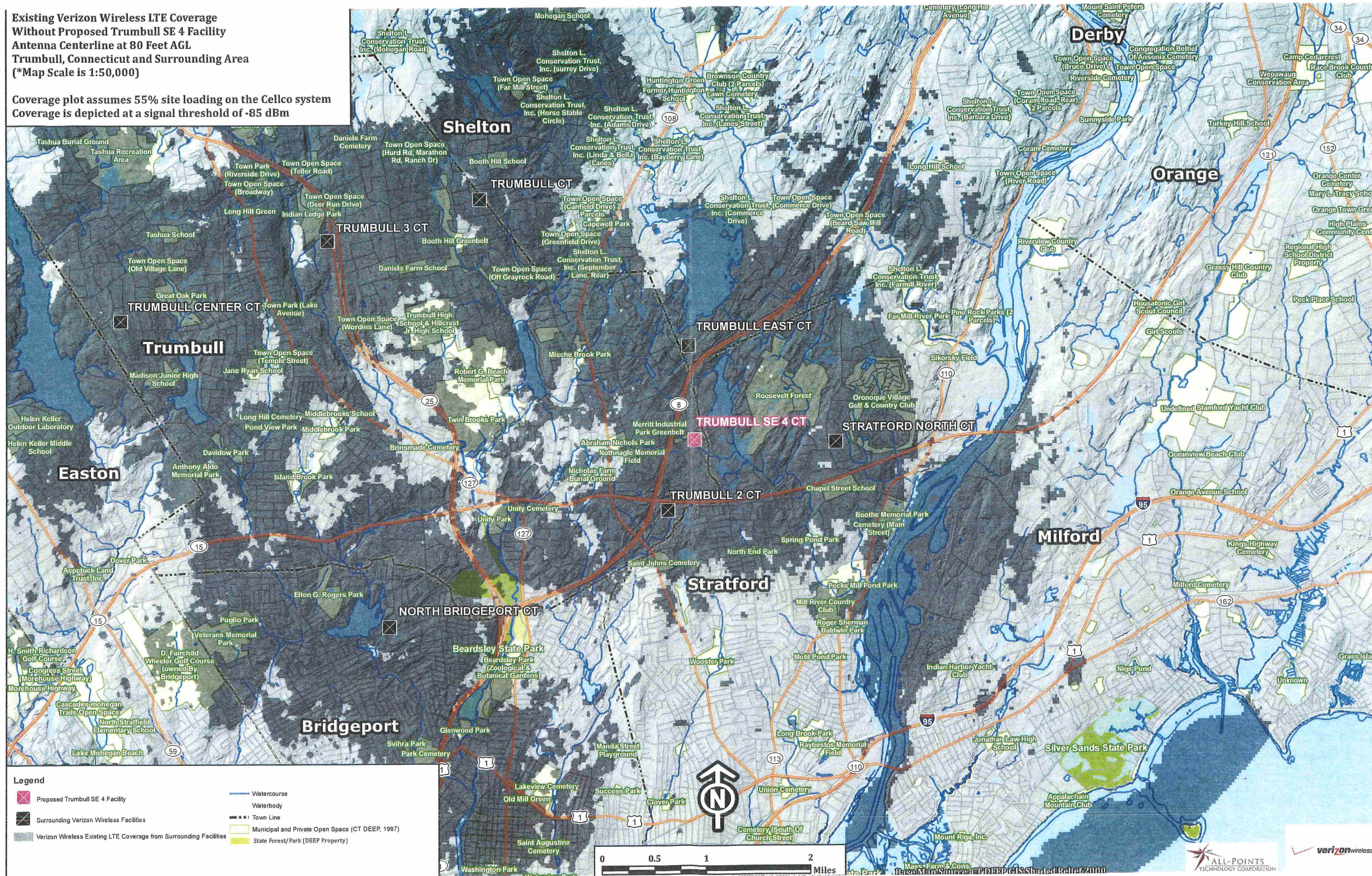


- Legend**
- Proposed Trumbull SE 4 Facility
 - Surrounding Verizon Wireless Facilities
 - Verizon Wireless AWS Coverage from Trumbull SE 4 Facility
 - Verizon Wireless Existing AWS Coverage from Surrounding Facilities
 - Watercourse
 - Waterbody
 - Town Line
 - Municipal and Private Open Space (CT DEEP, 1997)
 - State Forest/Park (DEEP Property)

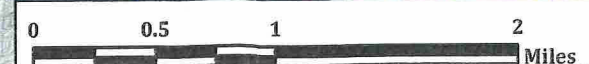


**Existing Verizon Wireless LTE Coverage
Without Proposed Trumbull SE 4 Facility
Antenna Centerline at 80 Feet AGL
Trumbull, Connecticut and Surrounding Area
(*Map Scale is 1:50,000)**

Coverage plot assumes 55% site loading on the Cellco system
Coverage is depicted at a signal threshold of -85 dBm

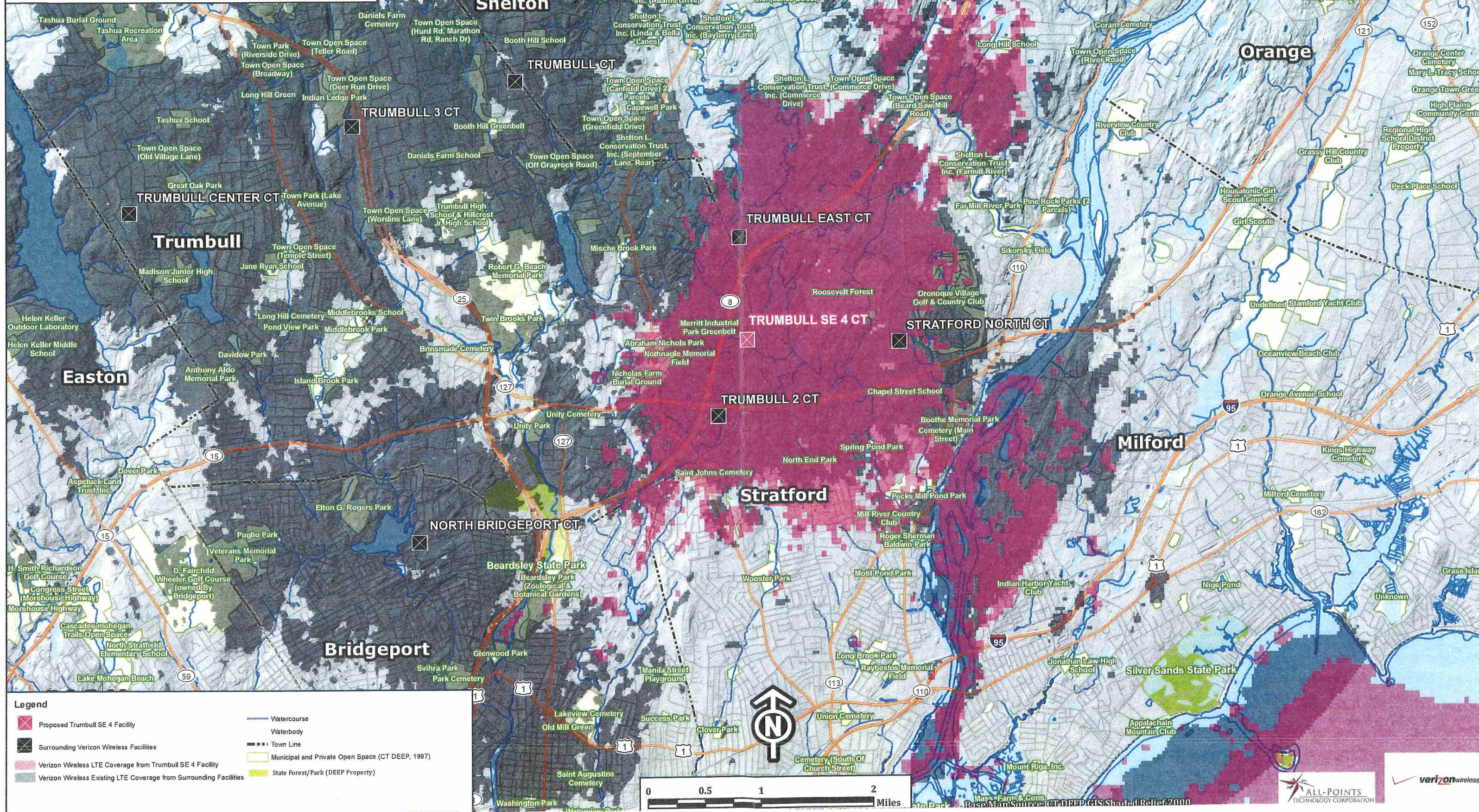


- Legend**
- Proposed Trumbull SE 4 Facility
 - Surrounding Verizon Wireless Facilities
 - Verizon Wireless Existing LTE Coverage from Surrounding Facilities
 - Watercourse
 - Waterbody
 - Town Line
 - Municipal and Private Open Space (CT DEEP, 1997)
 - State Forest/Park (DEEP Property)



**Existing Verizon Wireless LTE Coverage
With Proposed Trumbull SE 4 Facility
Antenna Centerline at 80 Feet AGL
Trumbull, Connecticut and Surrounding Area
(*Map Scale is 1:50,000)**

Coverage plot assumes 55% site loading on the Cellco system
Coverage is depicted at a signal threshold of -85 dBm



- Legend**
- Proposed Trumbull SE 4 Facility
 - Surrounding Verizon Wireless Facilities
 - Verizon Wireless LTE Coverage from Trumbull SE 4 Facility
 - Verizon Wireless Existing LTE Coverage from Surrounding Facilities
 - Watercourse
 - Waterbody
 - Town Line
 - Municipal and Private Open Space (CT DEEP, 1997)
 - State Forest/Park (DEEP Property)



ATTACHMENT 2

SITE LOCATION PLAN

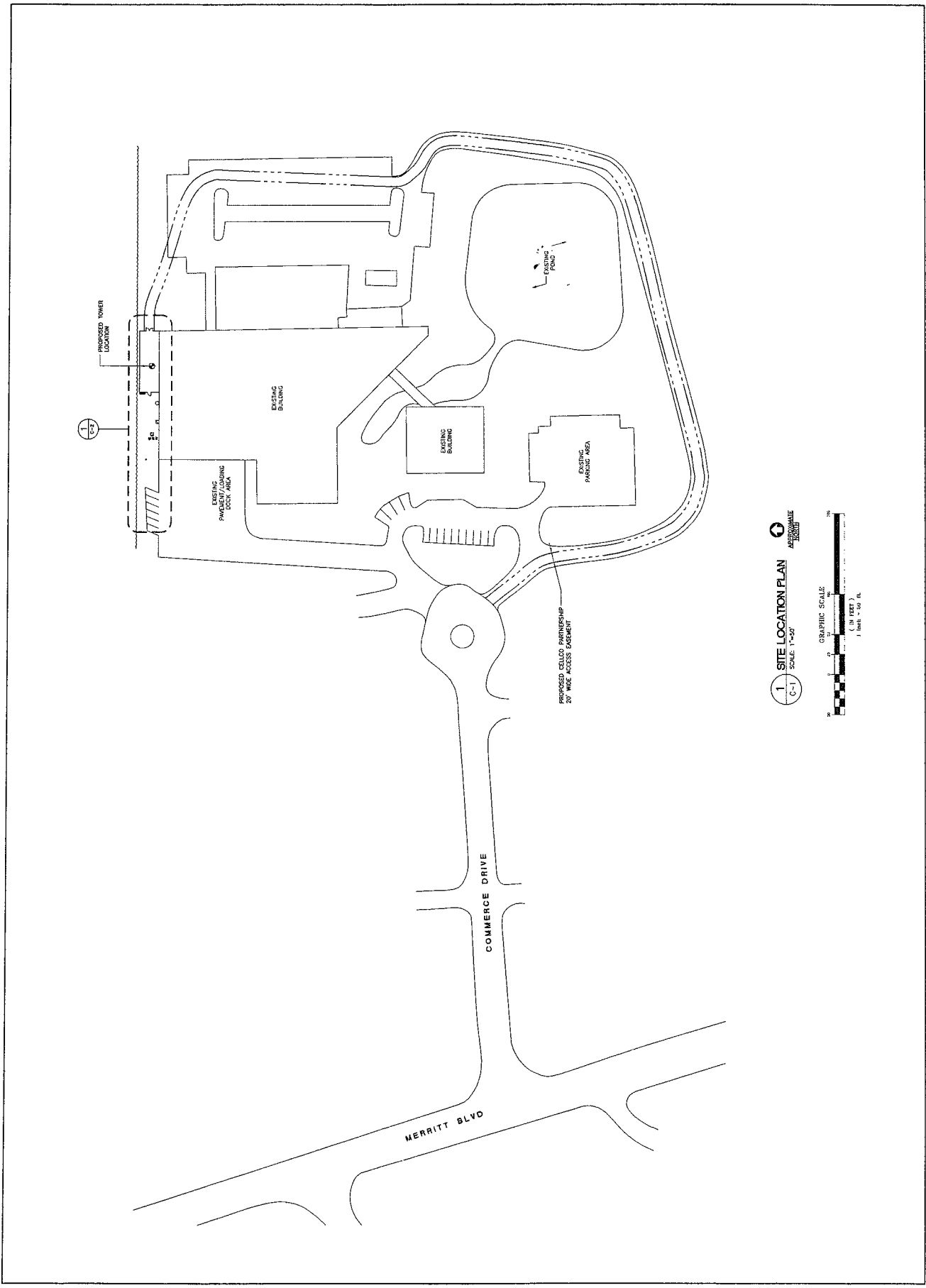
DATE: AS NOTED
 SCALE: AS NOTED
 JOB NO. 1338

Calco Partnership d/b/a Verizon Wireless
 WIRELESS COMMUNICATIONS FACILITY
TRUMBULL SE 4
 60 COMMERCE DRIVE
 TRUMBULL, CT 06611
 www.verizon.com

Calco Partnership
 d/b/a Verizon Wireless

PROJECT NO. 1338
 DATE: 10/26/13
 DRAWN BY: JSP
 CHECKED BY: JSP
 DESCRIPTION: PREPARED FOR THE TRUMBULL TOWER - CLIENT REVIEW

REV.	DATE	PROJECT BY	DESCRIPTION
1	10/26/13	JSP	PREPARED FOR THE TRUMBULL TOWER - CLIENT REVIEW
0	10/26/13	JSP	ISSUED FOR THE TRUMBULL TOWER - CLIENT REVIEW



1 SITE LOCATION PLAN
 C-1 SCALE: 1"=50'

GRAPHIC SCALE
 (IN FEET)
 1 Inch = 50 ft.



ATTACHMENT 3



MEMORANDUM

Date: October 11, 2013

To: Ms. Alexandria Carter
Verizon Wireless
99 East River Drive
East Hartford CT 06108

From: Michael Libertine

Re: Preliminary Visibility Analysis
Trumbull SE 4
60 Commerce Drive
Trumbull, Connecticut

To assist in meeting its coverage objectives in Trumbull, Verizon Wireless has identified an area that requires a new wireless telecommunications facility ("Facility"). A potential site candidate location has been identified at 60 Commerce Drive, north of an existing building. The proposed Facility would consist of an 80-foot tall monopole and associated ground equipment enclosed within a fenced, gravel-base compound.

At the request of Verizon Wireless, All-Points Technology Corporation, P.C. ("APT") prepared this Preliminary Visibility Analysis to evaluate potential views associated with the proposed Facility. To conduct this evaluation, a predictive computer model was developed specifically for this project. The predictive model provides an initial assessment of potential visibility throughout a pre-defined Study Area, in this case a two-mile radius surrounding the proposed Facility location. The model includes the site location, the Facility height and ground elevation, as well as the two primary features that would serve to obstruct direct lines of sight: surrounding topography and the tree canopy vegetation. For purposes of this evaluation, a conservative average tree canopy height of 55 feet was incorporated. With these data inputs, the model can predict where views of the Facility may be seen from locations within the Study Area. Those shaded areas of predicted visibility shown on the attached map locations from which the proposed Facility may be visible year-round (in yellow) or seasonally (in orange), when the leaves are off the deciduous trees. Note that the results of the model have not been field verified.

The results of the Preliminary Visibility Analysis are presented on the attached map. Year-round visibility associated with the proposed Facility appears to extend off the property generally to the south and east, within approximately 0.5 to 0.75 mile from the site.

We anticipate that views during “leaf-off” conditions will extend beyond those areas where year-round visibility is depicted on the accompanying map, likely offering somewhat obstructed views of the Facility through the trees from locations potentially up to a mile away. Land to the west of the site is heavily wooded with primarily deciduous trees, so partial views of the Facility may be achieved from within some of this area.

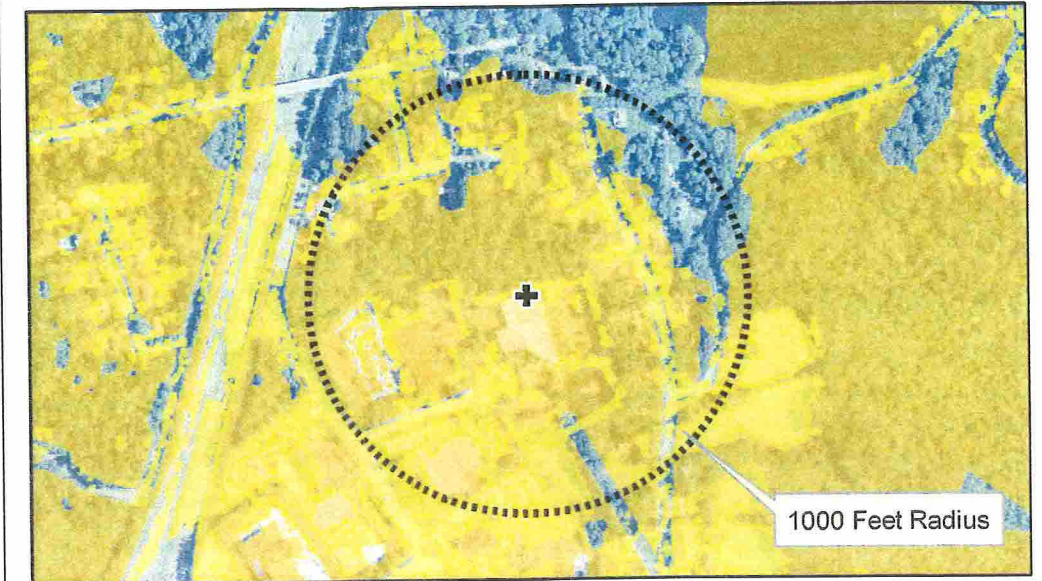
Again, the attached view shed map is preliminary in nature, and is based solely on computer modeling, as the results have not been field-verified to date. The model is designed to answer a very simple yes-no question: can the top of the tower be seen from points within the Study Area, given the existing topography, infrastructure and vegetation? Although it provides the basis for understanding at least from a preliminary quantitative standpoint the extent of visibility that may occur, it does not qualitatively address any of those potential views. Near-range unobstructed views will certainly allow a viewer to see a majority of the pole from ground level to the top. Distance and intervening objects significantly alter the specific characteristics of the views.

These preliminary results will be field-verified in the near future and documented in a full visibility analysis report, which will include revised mapping, photographs of existing conditions and simulations of the proposed Facility from several vantage points within the two-mile Study Area, and accompanying narratives. The final visibility analysis report will be included in a future application filing to the Connecticut Siting Council for a Certificate of Environmental Compatibility and Public Need.

Attachment



Source:NRCS 2012



PRELIMINARY VISIBILITY ANALYSIS
 Proposed Wireless Telecommunications Facility
 60 Commerce Drive
 Trumbull, CT

Proposed facility height is 80 feet AGL
 Existing tree canopy height estimated as 55 feet
 Study area includes 8,042 acres of land

Map compiled 10/10/2013

This preliminary Visibility Analysis map relies solely on computer modeling and interpretation of aerial photographs and topographic maps. The information presented herein has not been field verified. Only those resources located within the Study Area are depicted. For a complete list of data sources consulted for this analysis, please refer to the Documentation Page.

Legend

- Proposed Tower
- Predicted Year-Round Visibility
- Predicted Seasonal Visibility
- Scenic Highways
- Towns
- 2-Mile Study Area



Location



ALL-POINTS
 TECHNOLOGY CORPORATION
 3 Saddlebrook Drive Killingworth, CT 06419
 www.allpointstech.com

DOCUMENTATION

SOURCES CONSULTED FOR PRELIMINARY VISIBILITY ANALYSIS MAP

Trumbull SE4, CT
60 Commerce Drive
Trumbull, Connecticut

Physical Geography / Background Data

Center for Land Use Education and Research, University of Connecticut (<http://clear.uconn.edu>)

- *Land Use / Land Cover (2006)
- *Coniferous and Deciduous Forest (2006)
- *LiDAR data – topography (2000)

United States Geological Survey

- *USGS topographic quadrangle map – Long Hill, Ansonia, Milford, Bridgeport (1984)

National Resource Conservation Service

- *NAIP aerial photography (2012)

Heritage Consultants

- ^State Scenic Highways (based on Department of Transportation data, updated monthly)
- ^Municipal Scenic Roads (by website, phone and/or email/fax - current)

Cultural Resources

Heritage Consultants

- ^National Register
- ^ Local Survey Data

Dedicated Open Space & Recreation Areas

Connecticut Department of Energy and Environmental Protection (DEEP)

- *DEEP Property (May 2007)
- *Federal Open Space (1997)
- *Municipal and Private Open Space (1997)
- *DEEP Boat Launches (1994)

Connecticut Forest & Parks Association

- ^Connecticut Walk Book West – The Guide to the Blue-Blazed Hiking Trails of Western Connecticut, 19th Edition, 2006.

Other

- ^ConnDOT Scenic Strips (based on Department of Transportation data)

*Available to the public in GIS-compatible format (some require fees).

^ Data not available to general public in GIS format. Reviewed independently and, where applicable, GIS data later prepared specifically for this Study Area.

LIMITATIONS

The visibility analysis map presented in this report depict areas where the proposed Facility may potentially be visible to the human eye without the aid of magnification based on a viewer eye-height of 5 feet above the ground and intervening topography and a tree canopy height of 55 feet. This analysis may not necessarily account for all clearings, as it is based on a review of 2012 aerial photographs. This analysis does not claim to depict the only areas, or all locations, where visibility may occur; it is intended to provide a representation of those areas where the Facility is estimated to be seen. The map has not been field verified.

ATTACHMENT 4

General Power Density

Site Name: TRUMBULL SE 4, CT
 Cumulative Power Density

Operator	Operating Frequency (MHz)	Number of Trans.	ERP Per Trans. (watts)	Total ERP (watts)	Distance to Target (feet)	Calculated Power Density (mW/cm ²)	Maximum Permissible Exposure* (mW/cm ²)	Fraction of MPE (%)
VZW PCS	1970	15	481	7215	80	0.4054	1.0	40.54%
VZW Cellular	869	9	428	3852	80	0.2164	0.5793333333	37.36%
VZW AWS	2145	1	1750	1750	80	0.0983	1.0	9.83%
VZW 700	698	1	879	879	80	0.0494	0.4653333333	10.61%
Total Percentage of Maximum Permissible Exposure								98.35%

*Guidelines adopted by the FCC on August 1, 1996, 47 CFR Part 1 based on NCRP Report 86, 1986 and generally on ANSI/IEEE C95.1-1992

MHz = Megahertz

mW/cm² = milliwatts per square centimeter

ERP = Effective Radiated Power

Absolute worst case maximum values used.

ATTACHMENT 5

Cellco Partnership d/b/a Verizon Wireless
Trumbull SE 4 Facility
Trumbull, Connecticut

Site Search Summary

Section 16-50j-74(j) of the Regulations of Connecticut State Agencies requires the submission of a statement that describes “the narrowing process by which other possible sites were considered and eliminated.” In accordance with this requirement, descriptions of the general site search process, the identification of the applicable search area and the alternative locations considered for development of the proposed telecommunications facility in southeast Trumbull are provided below.

Site Search Process

To initiate its site selection process in an area where wireless service problems have been identified, Cellco first establishes a “site search ring” or “site search area”. In any search ring or search area, Cellco seeks to avoid the unnecessary proliferation of towers and to reduce the potential adverse environmental effects of the cell site, while at the same time maximizing the quality of service provided from a particular facility. These objectives are achieved by initially locating existing towers and other sufficiently tall structures within and near the site search area. If any are found, they are evaluated to determine whether they are capable of supporting Cellco’s telecommunications antennas and related equipment at a location and elevation that satisfies its technical requirements.

The list of available locations may be further reduced if, after preliminary negotiations, the property owners withdraw a site from further consideration. From among the remaining locations, the proposed sites are selected by eliminating those that have greater potential for adverse environmental effects and fewer benefits to the public (*i.e.*, those requiring taller towers, possibly with lights; those with substantial adverse environmental impacts, or in densely populated residential areas; and those with limited ability to share space with other public or private telecommunications service providers). It should be noted that in any given site search, the weight afforded to factors considered in the selection process will vary depending upon the availability and nature of sites within the search area.

Need

Within approximately one and a half miles of the proposed Trumbull SE 4 cell site, Cellco maintains three (3) existing telecommunications facilities, identified as its Stratford North, Trumbull East and Trumbull 2 cell sites. Cellco’s Stratford North facility consists of antennas at the 98-foot level on an existing 110-foot tower at 630 James Farm Road in Stratford. Cellco’s Trumbull East facility consists of antennas at the 84-foot level on an existing water tank at 605 Huntington Street in Shelton. Cellco’s Trumbull 2 facility consists of antennas on the roof of the Trumbull Marriott building at 180 Hawley Lane in Trumbull. These existing facilities currently provide wireless coverage in the area around the Trumbull Corporate Park. Cellco’s Trumbull 2, Stratford North and, to a lesser extent, Trumbull East facilities are,

however, operating at or near their current capacity limits, resulting in a significant reduction in reliable wireless service in the area. Unfortunately, there are no other existing towers or other sufficiently tall structures available in this area. Construction of a new tower, therefore, is required to resolve Cellco's service problems. Because the proposed tower site provides "capacity" relief to its network, Cellco can keep the overall height of the structure lower than that which might be needed for a pure "coverage site".

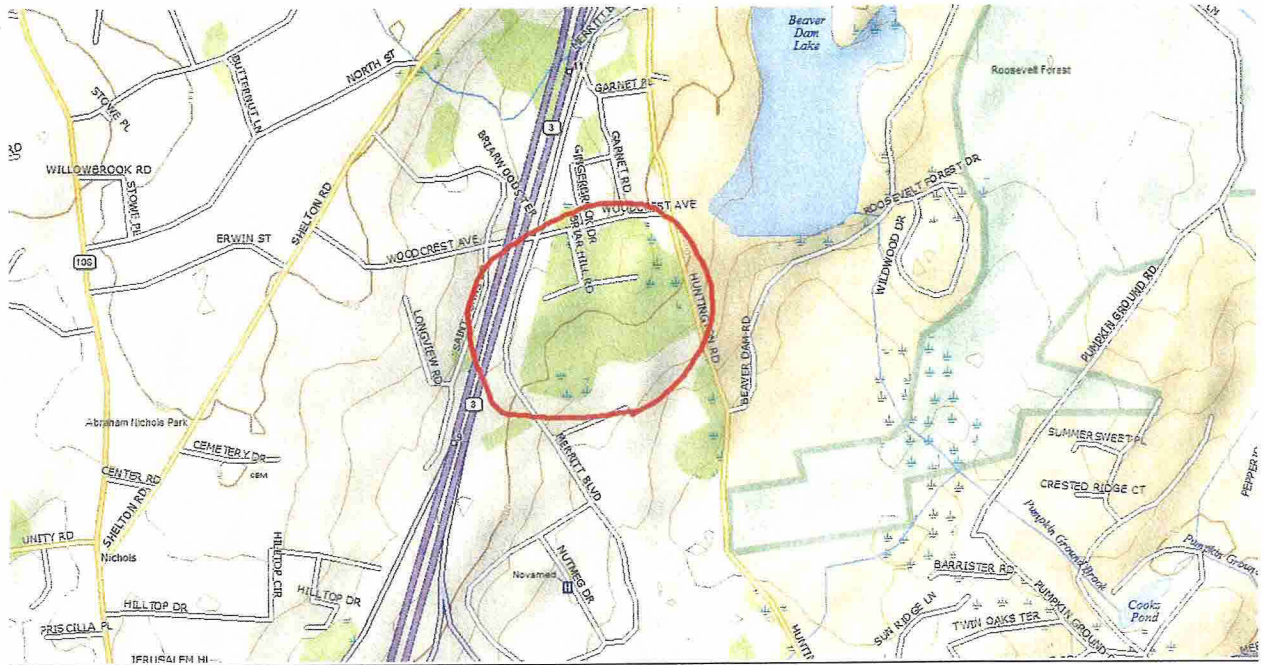
Identification of the Trumbull SE 4 Search Area

The purpose of the proposed Trumbull SE 4 Facility is to provide additional network capacity along portions of Route 8 in the Trumbull Corporate Park, and to the surrounding residential neighborhoods in southeast Trumbull. (See attached Search Area Map). Because the primary purpose of the Trumbull SE 4 facility is to relieve existing capacity problems at the two closest sites, the search ring issued is small and located approximately the same distance from the two existing sites.

Sites Investigated

Cellco identified and investigated a total of seven (7) sites in the Trumbull Corporate Park. A listing of the sites investigated is provided below.

1. **Pilot Corporation of America – 60 Commerce Drive, Trumbull, CT** – This is the site selected as the Trumbull SE 4 cell site.
2. **Consumer Products LLC – 25 Commerce Drive, Trumbull, CT** – The landowner was not interested in leasing space to Cellco for the development of a cell site.
3. **Consumer Products LLC – 45 Commerce Drive, Trumbull, CT** – The landowner was not interested in leasing space to Cellco for the development of a cell site.
4. **Consumer Products LLC – 50 Commerce Drive, Trumbull, CT** – The landowner was not interested in leasing space to Cellco for the development of a cell site.
5. **Conopco Inc. – 20 Merritt Boulevard, Trumbull, CT** – The landowner was not interested in leasing space to Cellco for the development of a cell site.
6. **Conopco Inc. – 40 Merritt Boulevard, Trumbull, CT** – The landowner was not interested in leasing space to Cellco for the development of a cell site.
7. **Belman Corporation – 55 Merritt Boulevard, Trumbull, CT** – The landowner was not interested in leasing space to Cellco for the development of a cell site.



Guidelines for the SAR are shown in the above map to emphasize areas where existing structures may exist.

Source: DeLorme Maps