



STATE OF CONNECTICUT
CONNECTICUT SITING COUNCIL

Ten Franklin Square, New Britain, CT 06051

Phone: (860) 827-2935 Fax: (860) 827-2950

E-Mail: siting.council@ct.gov

www.ct.gov/csc

April 9, 2014

TO: Council Members

FROM: Melanie Bachman, Acting Executive Director *WAB*

RE: **DOCKET NO. 445** - Homeland Towers, LLC and New Cingular Wireless PCS, LLC application for a Certificate of Environmental Compatibility and Public Need for the construction, maintenance, and operation of a telecommunications facility located at Ridgefield Town Assessor Map Parcel #D08-124, southwest of the intersection of Old Stagecoach Road and Aspen Ledges Road, Ridgefield, Connecticut.

The Connecticut Siting Council has scheduled a field review for this docket for Thursday, April 24, 2014 at 2:00 p.m. Council members will meet at the intersection of Old Stagecoach Road and Aspen Ledges Road in Ridgefield, Connecticut.

A public hearing is scheduled for Thursday, April 24, 2014, beginning at 3:00 p.m. in the conference room of the Ridgefield Town Hall at 400 Main Street in Ridgefield, Connecticut.

Maps and directions are enclosed.

MB/cdm

Enclosure

c: Secretary of the State (via e-mail service)
Parties and Intervenors
Lisa Fontaine, CSC
Tech Theatrical Services, LLC

Directions to intersection of Old Stagecoach Road and Aspen Ledges Road, Ridgefield, Connecticut.

From Hartford, New Britain, Enfield, Salisbury, and Meriden:

- Take I-84 westbound to Exit 3 in Danbury to follow Route 7 southbound (from Salisbury – take Route 7 southbound to I-84 westbound in Danbury).
- From Route 7 southbound take Exit 7 - Danbury Airport.
- At traffic light at end of exit ramp, turn left and then immediate right at next traffic light onto Miry Brook Road.
- Follow Miry Brook Road – it will become George Washington Highway – to stop sign at Ridgebury Road (No street sign for Ridgebury Road – white Congregational Church is across street and opposite street is a dead end). Distance is approximately 2.9 miles.
- Turn left onto Ridgebury Road.
- From Ridgebury Road, turn left onto Old Stagecoach Road (look for split rail fence ahead on left side of road). Distance on Ridgebury Road is approximately .9 mile.
- Follow Old Stagecoach Road to top of hill where CSC hearing sign is posted. Distance on Old Stagecoach Road is approximately 1.4 miles.

From Milford, Westbrook, and Stonington

- Take I-95 southbound to Exit 15 to follow Route 7 northbound – Norwalk/Danbury.
- Follow Route 7 northbound to Danbury town line; turn left at traffic light (shortly after BMW dealership on right) onto Bennetts Farm Road (there will be a cell tower just ahead on right). Distance on Route 7 northbound is approximately 17.6 miles.
- At first stop sign on Bennetts Farm Road, turn right to stay on Bennetts Farm Road (toward Ridgebury School).
- At second stop sign on Bennetts Farm Road, turn left onto Old Stagecoach Road (fire house will be on left).
- Follow Old Stagecoach Road to top of hill where CSC hearing sign is posted.

From Stamford

- Take I-95 northbound to Exit 15 to follow Route 7 northbound – Norwalk/Danbury.
- Follow Route 7 northbound to Danbury town line; turn left at traffic light (shortly after BMW dealership on right) onto Bennetts Farm Road (there will be a cell tower just ahead on right). Distance on Route 7 northbound is approximately 17.6 miles.
- At first stop sign on Bennetts Farm Road, turn right to stay on Bennetts Farm Road (toward Ridgebury School).
- At second stop sign on Bennetts Farm Road, turn left onto Old Stagecoach Road (fire house will be on left).
- Follow Old Stagecoach Road to top of hill where CSC hearing sign is posted

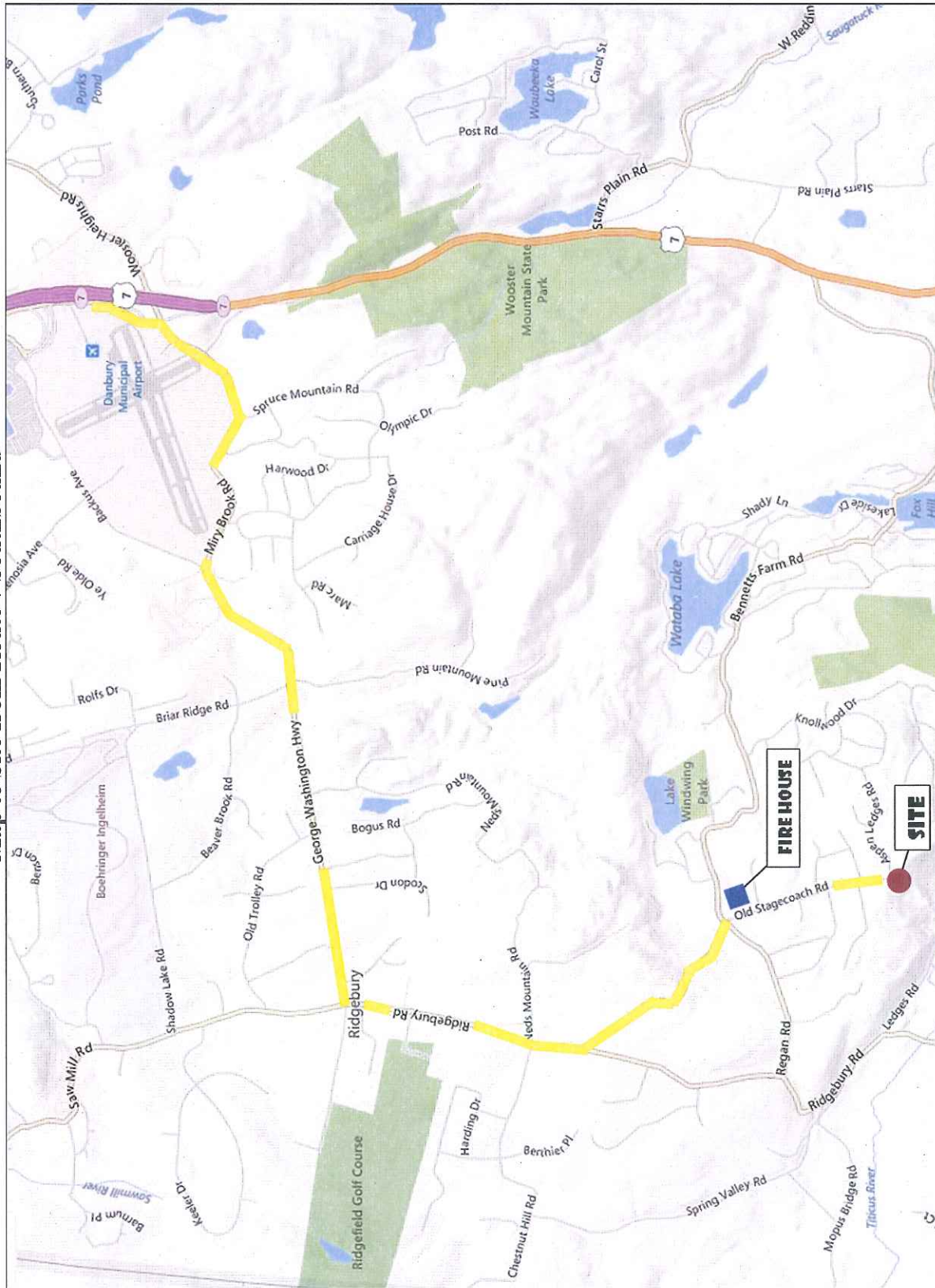
To Hearing/Town Hall from Site

- From site, return down Old Stagecoach Road.
- Just before stop sign—and opposite fire house—turn left onto Regan Road.
- Follow Regan Road to Ridgebury Road, turn left onto Ridgebury Road.
- From Ridgebury Road, turn left on Salem Road (Route 116) just after Ridgefield High School.
- Follow Salem Road/Route 116 into center of Ridgefield (Main Street).
- Town Hall is at 400 Main Street, corner of Bailey Avenue.
- Turn left onto Bailey Avenue – municipal parking is two short blocks on left.

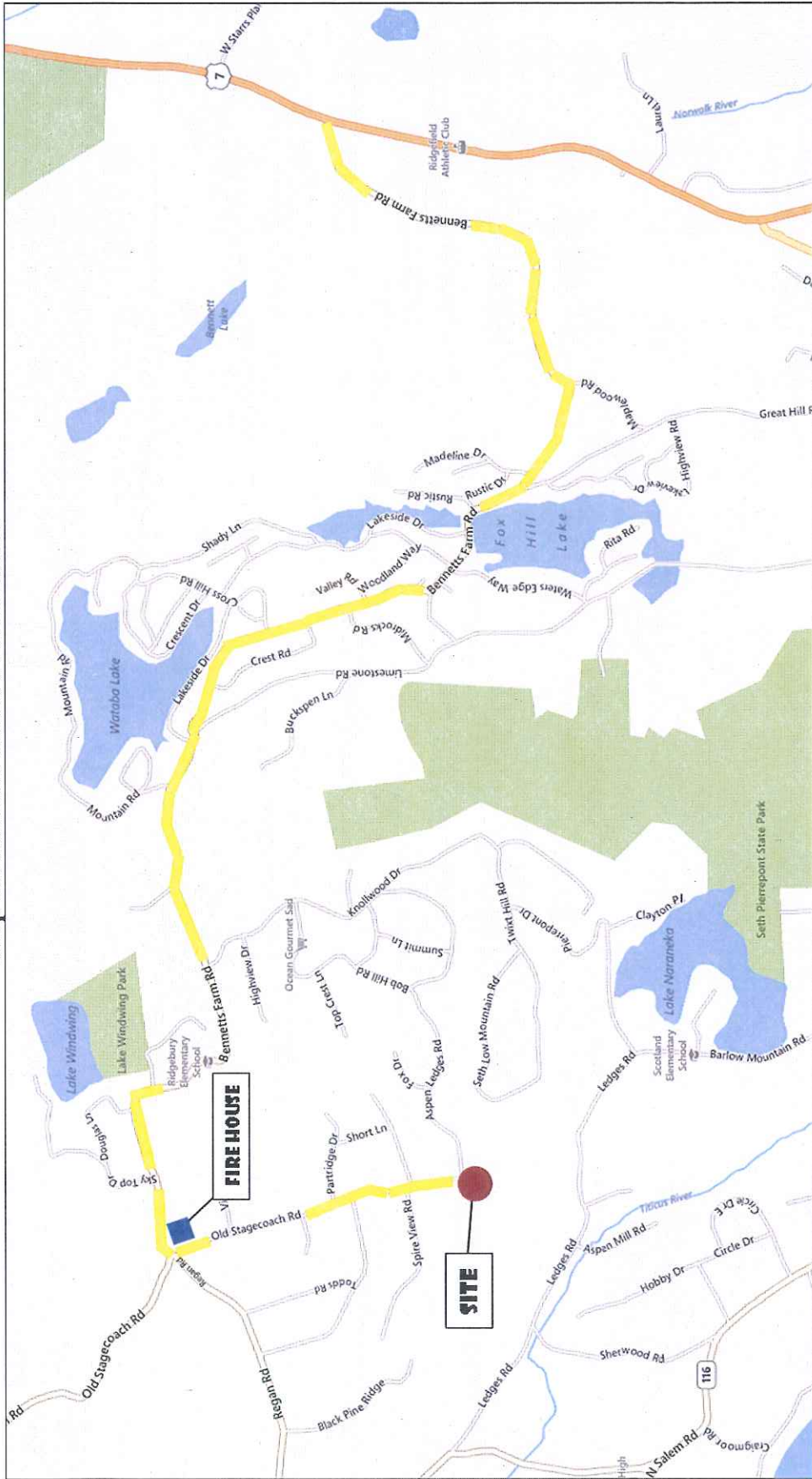
To Restaurant

Dinner will be at the Bissell House Restaurant, 378 Main Street in Ridgefield, 203-431-4440. Restaurant is a few doors from the Town Hall on Main Street.

Map to Site from Route 7 Southbound



Map to Site from Route 7 Northbound



Central Ridgefield

