



SIMULATION

PHOTO

11

LOCATION

TOWN LINE ROAD

ORIENTATION

SOUTHEAST

DISTANCE TO SITE

+/- 1.89 MILES

VISIBILITY

YEAR ROUND





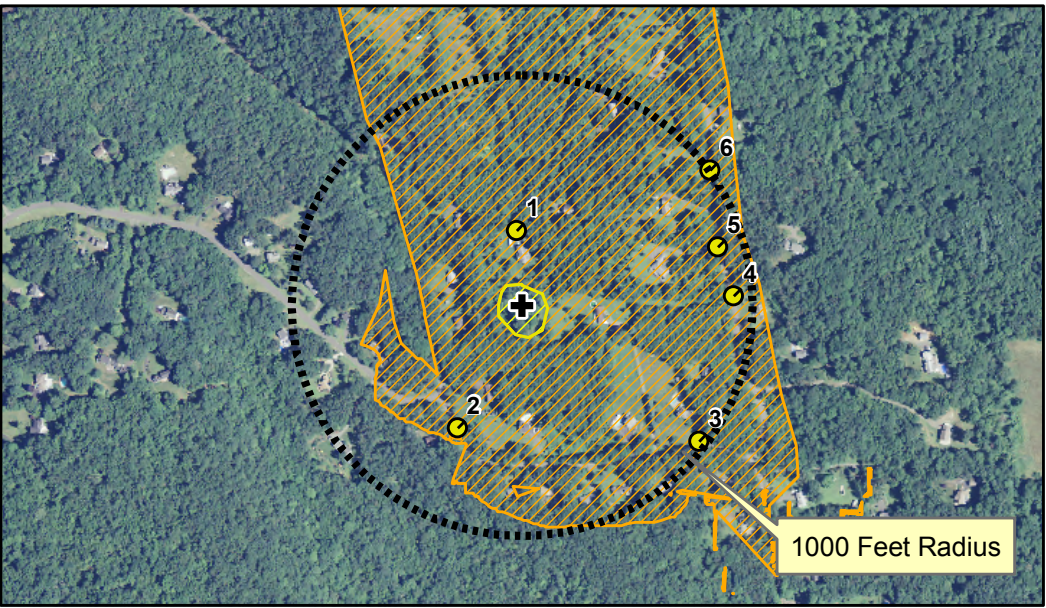
DOCUMENTATION

PHOTO	LOCATION	ORIENTATION	DISTANCE TO SITE	VISIBILITY
12	TOWN LINE ROAD	SOUTHEAST	+/- 2.00 MILES	YEAR ROUND



SIMULATION

PHOTO	LOCATION	ORIENTATION	DISTANCE TO SITE	VISIBILITY
12	TOWN LINE ROAD	SOUTHEAST	+/- 2.00 MILES	YEAR ROUND



VISIBILITY ANALYSIS- Aerial Base
 Proposed Wireless Telecommunications Facility
 257 Perkins Road
 Southbury, CT

Proposed facility height is 170 feet AGL
 Existing tree canopy height estimated as 65 feet
 Study area includes 8,042 acres of land

Map compiled 7/7/2013

Map information field verified by APT on 6/24/13

Only those resources located within the Study Area are depicted. For a complete list of data sources consulted for this analysis, please refer to the Documentation Page.

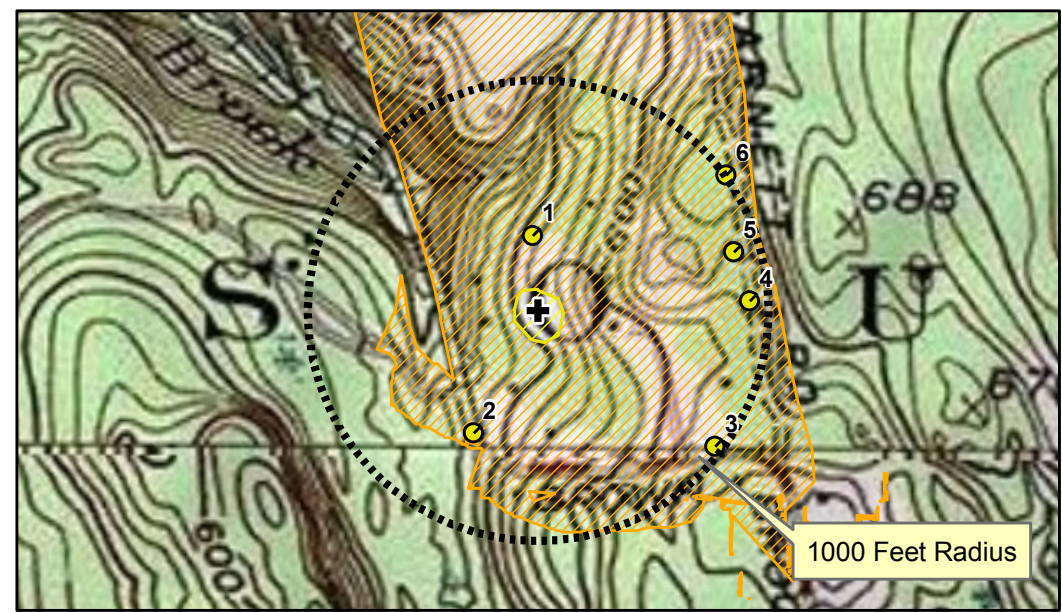
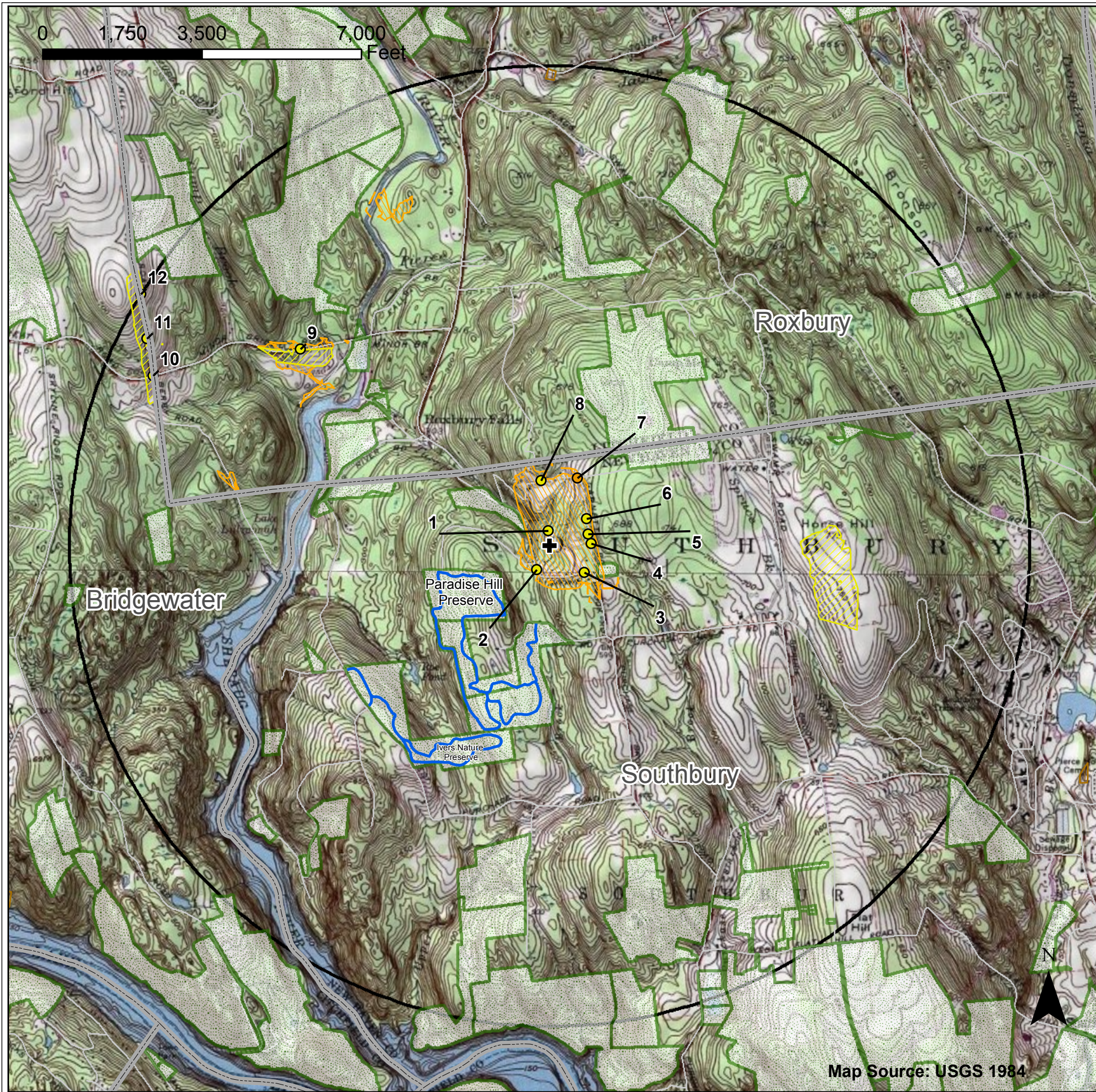
Legend

- Towns
- Proposed Tower
- Photo Locations**
- Seasonal Visibility
- Year-round Visibility
- Trails
- Predicted Year-Round Visibility
- Predicted Seasonal Visibility
- Municipal Private Open Space
- Protected Open Space
- 2-Mile Study Area



ALL-POINTS
 TECHNOLOGY CORPORATION
 3 Saddlebrook Drive Killingworth, CT 06419
 www.allpointstech.com

Aerial Source: NRCS 2012



VISIBILITY ANALYSIS- Topo Base
 Proposed Wireless Telecommunications Facility
 257 Perkins Road
 Southbury, CT

Proposed facility height is 170 feet AGL
 Existing tree canopy height estimated as 65 feet
 Study area includes 8,042 acres of land

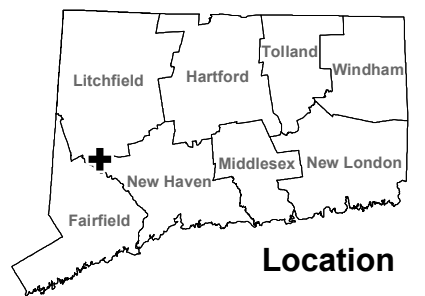
Map compiled 7/7/2013

Map information field verified by APT on 6/24/13

Only those resources located within the Study Area are depicted. For a complete list of data sources consulted for this analysis, please refer to the Documentation Page.

Legend

- Towns
- Proposed Tower
- Photo Locations**
- Seasonal Visibility
- Year-round Visibility
- Trails
- Predicted Year-Round Visibility
- Predicted Seasonal Visibility
- Municipal Private Open Space
- Protected Open Space
- 2-Mile Study Area



ALL-POINTS
 TECHNOLOGY CORPORATION
 3 Saddlebrook Drive Killingworth, CT 06419
 www.allpointstech.com

Map Source: USGS 1984

DOCUMENTATION

SOURCES CONSULTED FOR VISIBILITY ANALYSIS 257 Perkins Road Southbury, CT

Physical Geography / Background Data

Center for Land Use Education and Research, University of Connecticut (<http://clear.uconn.edu>)

- *Land Use / Land Cover (2006)
- *Coniferous and Deciduous Forest (2006)
- *LiDAR data – topography (2000)

United States Geological Survey

- *USGS topographic quadrangle maps – Southbury (1984)

National Resource Conservation Service

- *NAIP aerial photography (2006, 2008, 2010, 2012)

Heritage Consultants

- ^State Scenic Highways (based on Department of Transportation data, updated monthly)
- ^Municipal Scenic Roads (by website, phone and/or email/fax - current)

Cultural Resources

Heritage Consultants

- ^National Register
- ^ Local Survey Data

Dedicated Open Space & Recreation Areas

Connecticut Department of Energy and Environmental Protection (DEEP)

- *DEEP Property (May 2007)
- *Federal Open Space (1997)
- *Municipal and Private Open Space (1997)
- *DEEP Boat Launches (1994)

Connecticut Forest & Parks Association

- ^Connecticut Walk Books West – The Guide to the Blue-Blazed Hiking Trails of Western Connecticut, 19th Edition, 2006.

Other

- ^ConnDOT Scenic Strips (based on Department of Transportation data)

*Available to the public in GIS-compatible format (some require fees).

^ Data not available to general public in GIS format. Reviewed independently and, where applicable, GIS data later prepared specifically for this Study Area.

LIMITATIONS

The visibility analysis map(s) presented in this report depict areas where the proposed Facility may potentially be visible to the human eye without the aid of magnification based on a viewer eye-height of 5 feet above the ground and intervening topography and an assumed tree canopy height of 65 feet. This analysis may not necessarily account for all clearings, as it is based on a combination of 2012 aerial photographs and in-field observations from publicly-accessible locations. This analysis does not claim to depict the only areas, or all locations, where visibility may occur; it is intended to provide a representation of those areas where the Facility is likely to be seen. No access to private properties beyond the host Property was provided to APT personnel.

The photo-simulations in this report are provided for visual representation only. Actual visibility depends on various environmental conditions, including (but not necessarily limited to) weather, season, time of day, and viewer location.