



STATE OF CONNECTICUT  
*CONNECTICUT SITING COUNCIL*

Ten Franklin Square, New Britain, CT 06051  
Phone: (860) 827-2935 Fax: (860) 827-2950  
E-Mail: [siting.council@ct.gov](mailto:siting.council@ct.gov)  
Web Site: [portal.ct.gov/csc](http://portal.ct.gov/csc)

**VIA ELECTRONIC MAIL**

February 2, 2023

Kenneth C. Baldwin, Esq.  
Robinson & Cole LLP  
280 Trumbull Street  
Hartford, CT 06103-3597  
[kbaldwin@rc.com](mailto:kbaldwin@rc.com)

RE: **DOCKET NO. 442** – New Cingular Wireless, PCS Certificate of Environmental Compatibility and Public Need for the construction, maintenance, and operation of a telecommunications facility located at 284 New Canaan Avenue, Norwalk, Connecticut.  
**Development and Management Plan Part II – East Unipole.**

Dear Attorney Baldwin:

At a public meeting of the Connecticut Siting Council (Council) held on February 2, 2023, the Council considered and approved the Development and Management (D&M) Plan, Part II – East Unipole submitted for this facility on December 9, 2022.

This approval applies only to the D&M Plan submitted on December 9, 2022, and supplemental information dated January 11, 2023. Requests for any changes to the D&M Plan shall be approved by Council staff in accordance with Regulations of Connecticut State Agencies Section (RCSA) §16-50j-77(b).

Furthermore, the Certificate Holder is responsible for compliance with the reporting requirements under RCSA §16-50j-77, including:

1. Contact information for the personnel of the contractor assigned to the project;
2. Notification of commencement of construction;
3. Quarterly construction progress reports;
4. Notification of completion of construction and commencement of operation; and
5. Final report.

Please be advised that deviations from the approved D&M Plan and non-compliance with the D&M Plan reporting requirements are enforceable under Connecticut General Statutes §16-50u.

Enclosed is a copy of the staff report for this D&M Plan, dated February 2, 2023.

Thank you for your attention and cooperation.

Sincerely,

A handwritten signature in dark ink, appearing to read "Melanie A. Bachman". The signature is fluid and cursive, with a long horizontal stroke at the end.

Melanie A. Bachman  
Executive Director

MAB/RDM/laf

Enclosure: Staff Report, dated February 2, 2023

c: Service List, dated November 14, 2013



STATE OF CONNECTICUT  
*CONNECTICUT SITING COUNCIL*

Ten Franklin Square, New Britain, CT 06051  
Phone: (860) 827-2935 Fax: (860) 827-2950  
E-Mail: [siting.council@ct.gov](mailto:siting.council@ct.gov)  
Web Site: [portal.ct.gov/csc](http://portal.ct.gov/csc)

**Docket No. 442**  
**284 New Canaan Avenue, Norwalk**  
**Development and Management Plan- Part II- East Unipole**

**Staff Report**  
**February 2, 2023**

On May 29, 2014, the Connecticut Siting Council (Council) issued a Certificate of Environmental Compatibility and Public Need to New Cingular Wireless PCS, LLC (AT&T) for the construction, maintenance, and operation of a wireless telecommunications facility located at 284 New Canaan Avenue in Norwalk, Connecticut. The approved facility consists of two 140-foot monopoles, with each monopole to include flush-mounted antennas concealed within a radio-frequency (RF) transparent casing, similar to a flagpole design without a flag (unipole).

As required in the Council's Decision and Order (D&O), AT&T submitted a Development and Management (D&M) Plan Part I to the Council on November 25, 2014 for construction of the west unipole to accommodate AT&T's antennas at the 137-foot and 127-foot levels and an associated 50-foot by 80-foot fenced compound designed to accommodate both unipoles and associated equipment. D&M Plan Part I stated construction details for the east unipole to host antennas for Cellco Partnership d/b/a Verizon Wireless (Cellco), an intervenor to the proceeding, would be provided at a later date (D&M Plan Part II).

The Council approved D&M Plan Part I on January 23, 2015 with the condition that Cellco submit detail of the final design of the east unipole (D&M Plan I approval). The west unipole, supporting AT&T, assumed operation in late November 2018. On January 19, 2023, the Council approved a tower share request from DISH Wireless LLC to locate at the 117-foot level of the west unipole.

As required in the Council's D&O and D&M Plan Part I approval, Cellco submitted D&M Plan Part II to the Council on December 9, 2022 for construction of the east unipole to accommodate Cellco's antennas at the 137-foot and 127-foot levels and associated equipment within the existing compound. Pursuant to Regulations of Connecticut State Agencies (RCSA) §16-50j-75(e), copies of D&M Plan Part II were also submitted to the service list for comment. The Council has not received any comments regarding D&M Plan Part II to date.

On December 28, 2022, the Council issued interrogatories to Cellco. On January 11, 2023, Cellco submitted responses to the Council's interrogatories.

The existing facility is located on a 11.5-acre parcel on the north side of New Canaan Avenue and west of the Merritt Parkway. The property is partially developed with several buildings and associated parking areas, with the remainder of the property consisting of woodland and wetlands.

Condition No. 1 of the D&O requires the following:

"...each tower comprising the facility shall not exceed a height of 140 feet above ground level. All panel antennas shall be mounted in a flush-mount configuration, concealed behind a radio-frequency transparent casing of uniform appearance. The outer diameter of the monopoles and related transparent casing shall be no greater than necessary to accommodate the antennas and related equipment of ... Verizon Wireless, but shall not exceed 56 inches..."

In compliance with Condition No. 1 of the D&O, the east unipole is 140 feet in height. Cellco would install three flush-mount antennas at the 136.7-foot level of the unipole and three antennas and three remote radio heads at the 127-foot level of the unipole, concealed within a 40-inch diameter, 50-foot long RF transparent casing.

Condition No. 2 of the D&O requires the following relevant information to be included in the D&M Plan:

- a) **a final site plan(s) of site development to include specifications for the facility, facility foundation, antennas, equipment compound, radio equipment, compound access, utility line, emergency backup generator and landscaping.**

Cellco will construct a 140-foot unipole designed in accordance with the EIA/TIA Structural Standards for Steel Antenna Towers and Antenna Supporting Structures-Revision H and the Connecticut State Building Code, effective October 1, 2022. The tower would be 47 inches wide at the base, tapering to 40 inches (casing diameter) at the 90-foot level.

The unipole would be designed to support five levels of flush-mounted antennas. Cellco would locate at the 137 and 127-foot levels of the tower, leaving the 117, 107 and 97-foot levels available for co-location by other carriers.

Due to the presence of fill and sandy soils at the tower site, the unipole will be supported by a mat foundation. Cellco will retain an engineering firm to oversee the foundation installation.

The tower will be located on the east side of the existing 50-foot by 80-foot fenced gravel compound, approximately 60 feet east of the existing west unipole.

Cellco will install a radio cabinet, battery cabinet, and a 30-kW emergency backup propane generator on a 12.5-foot by 12.5-foot concrete equipment pad north of the unipole. The concrete pad would be covered with an open sided ice canopy.

An equipment frame would be installed along the edge of the equipment pad to support six RRHs and fiber cabinets. An underground telco line would be routed along the north and west fence lines to an existing meter board adjacent to the compound fence.

A 500-gallon propane tank, sufficient for 5-7 days of run time, would be installed on a 4-foot by 10-foot concrete pad along the north fence line. Tank protection includes a 10-foot no spark zone and bollards.

The east unipole will be painted brown to match the color of the west unipole.

- b) **construction plans for site clearing, grading, landscaping, water drainage, and erosion and sedimentation controls consistent with the 2002 Connecticut Guidelines for Soil Erosion and Sediment Control, as amended.**

Construction of the unipole will occur within the existing compound. Erosion and sedimentation controls will comply with the *2002 Connecticut Guidelines for Soil Erosion and Sedimentation (E&S) Control*. Silt socks will be used to isolate the construction area from undisturbed areas outside of the compound.

Construction hours will be from 7:00 a.m. to 7:00 p.m., Monday through Saturday. Construction of the east unipole is anticipated to take 4 to 6 months.

Condition No. 3 of the D&O requires the following:

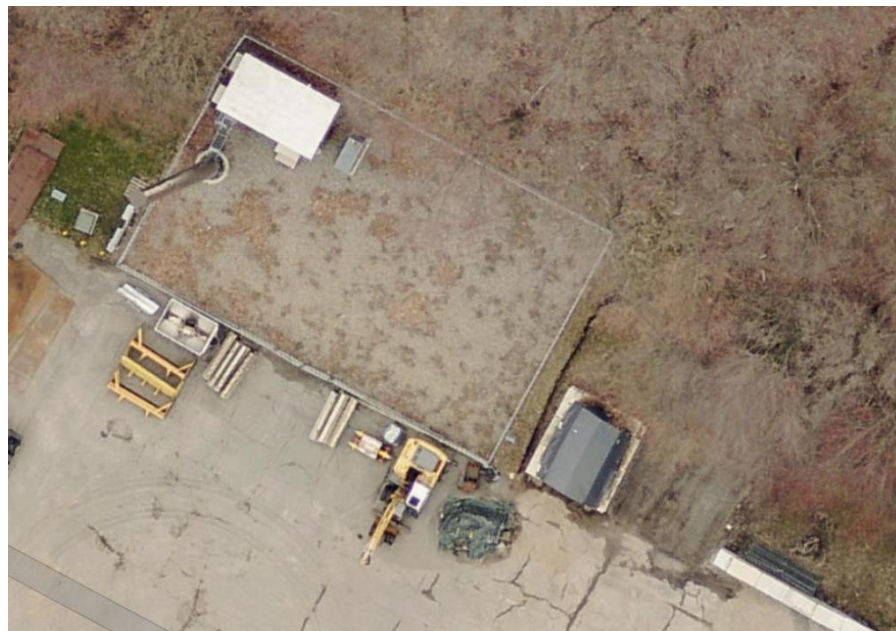
“Prior to the commencement of operation, the Certificate Holder shall provide the Council worst-case modeling of the electromagnetic radio frequency power density of all proposed entities’ antennas at the closest point of uncontrolled access to the tower base, consistent with Federal Communications Commission, Office of Engineering and Technology, Bulletin No. 65, August 1997...”

In response to the Council’s D&M Plan Part II interrogatories, Cellco submitted a cumulative far-field RF analysis for the facility that includes Cellco’s, AT&T’s and DISH’s antennas. The calculated cumulative worst-case far-field power density would be 8.5% of the applicable limit at ground level.

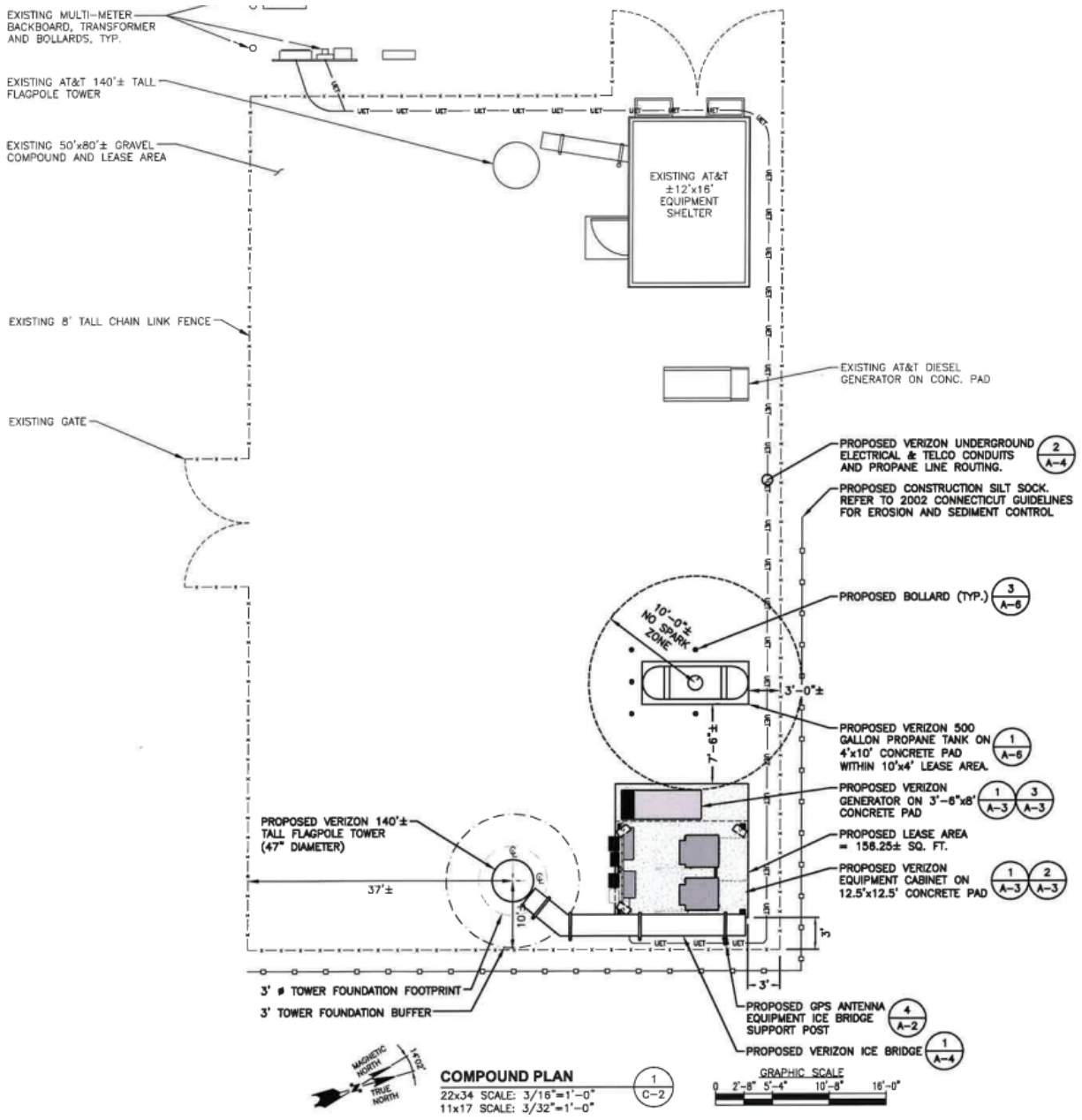
### **Conclusion**

D&M Plan Part II is consistent with the Council’s D&O for Docket No. 442.

**Existing Facility Location**



### Site Plan





### East Unipole Profile

