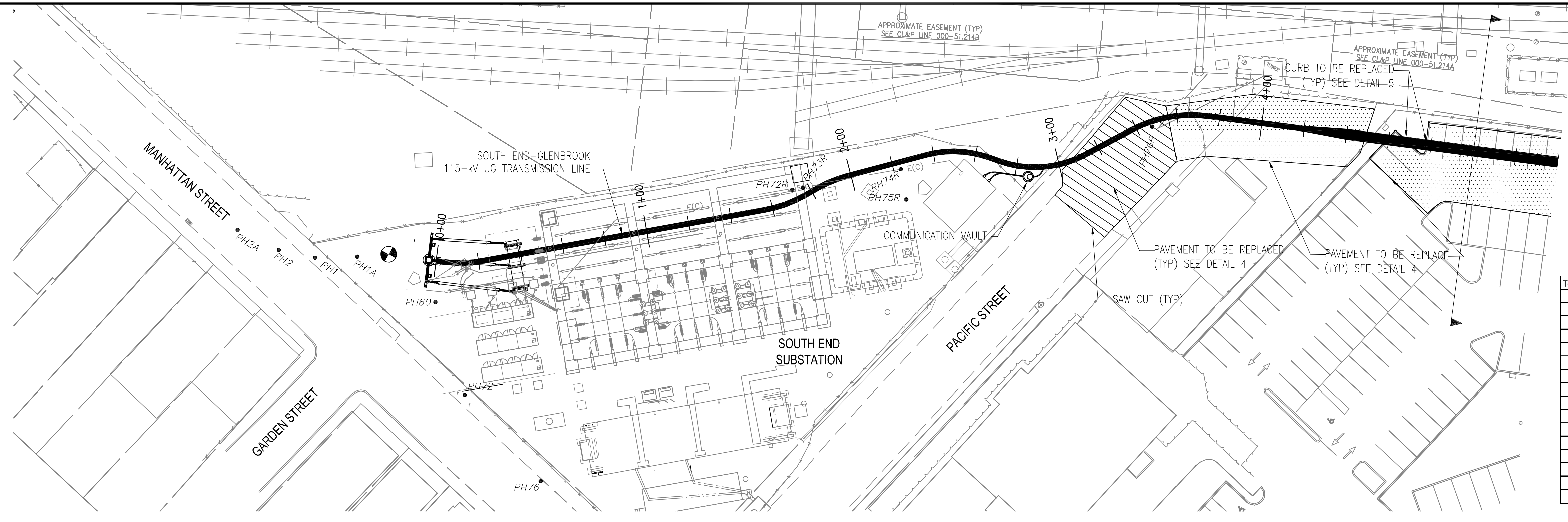
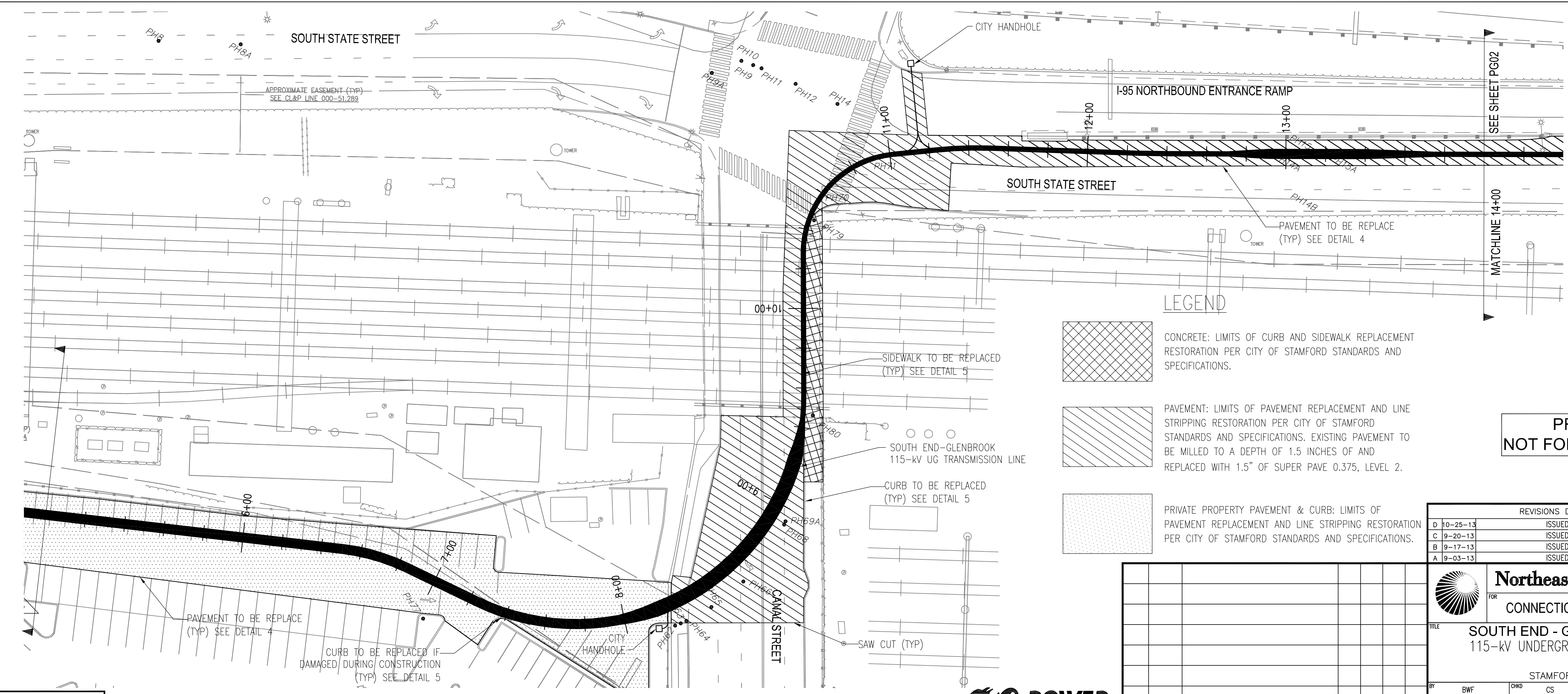


Exhibit 5: Pavement Restoration Plan

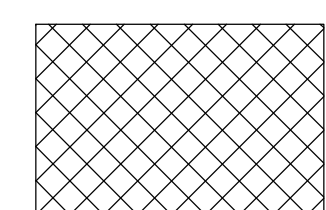
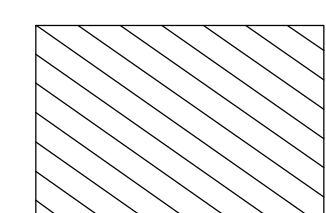
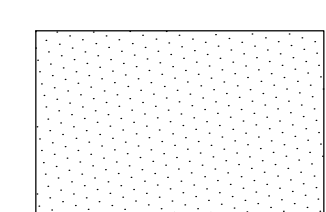


EXISTING PAVEMENT DEPTHS FROM TEST PITS

Test Pit #	Utility	Asphalt	Concrete
PH2	8" Gas	8 in	-
PH2	16" Gas (LP)	10 in	-
PH2A	8" Sewer	6 in	8 in
PH10	12" Gas (LP)	6 in	10 in
PH11	16" Gas (HP)	10 in	-
PH14	Telephone	2 in	10 in
PH15	Concrete Box	6 in	6 in
PH15A	10" Drain	6 in	6 in
PH62	8" Gas Main	-	4 in
PH63	12" Gas Main	-	4 in
PH64	16" Gas Main	-	4 in
PH65	Electrical	12 in	-
PH68	16" Water Main	12 in	-
PH69A	Metro-North Electrical/South edge of duct	12 in	-
PH70	Drain	2 in	8 in
PH76R	16" Gas Main	4 in	-



LEGEND

-  CONCRETE: LIMITS OF CURB AND SIDEWALK REPLACEMENT RESTORATION PER CITY OF STAMFORD STANDARDS AND SPECIFICATIONS.
-  PAVEMENT: LIMITS OF PAVEMENT REPLACEMENT AND LINE STRIPPING RESTORATION PER CITY OF STAMFORD STANDARDS AND SPECIFICATIONS. EXISTING PAVEMENT TO BE MILLED TO A DEPTH OF 1.5 INCHES OF AND REPLACED WITH 1.5" OF SUPER PAVE 0.375, LEVEL 2.
-  PRIVATE PROPERTY PAVEMENT & CURB: LIMITS OF PAVEMENT REPLACEMENT AND LINE STRIPPING RESTORATION PER CITY OF STAMFORD STANDARDS AND SPECIFICATIONS.

PRELIMINARY
NOT FOR CONSTRUCTION

REVISIONS DURING CONSTRUCTION

NO.	DATE	ISSUED FOR REVIEW	BWF	CS	LH
D	10-25-13	ISSUED FOR REVIEW	BWF	CS	LH
C	9-20-13	ISSUED FOR REVIEW	BWF	CS	LH
B	9-17-13	ISSUED FOR REVIEW	BWF	CS	LH
A	9-03-13	ISSUED FOR REVIEW	BWF	CS	LH

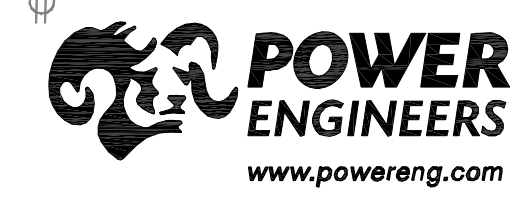
Northeast Utilities Service Co.
FOR
CONNECTICUT LIGHT & POWER COMPANY

TITLE
**SOUTH END - GLENBROOK 1151 LINE
115-kV UNDERGROUND TRANSMISSION LINE**

STAMFORD, CONNECTICUT

BY	CHKD	APP	DATE
BWF	CS	LH	09-03-2013
BWF	CS	LH	09-03-2013
BWF	CS	LH	09-03-2013

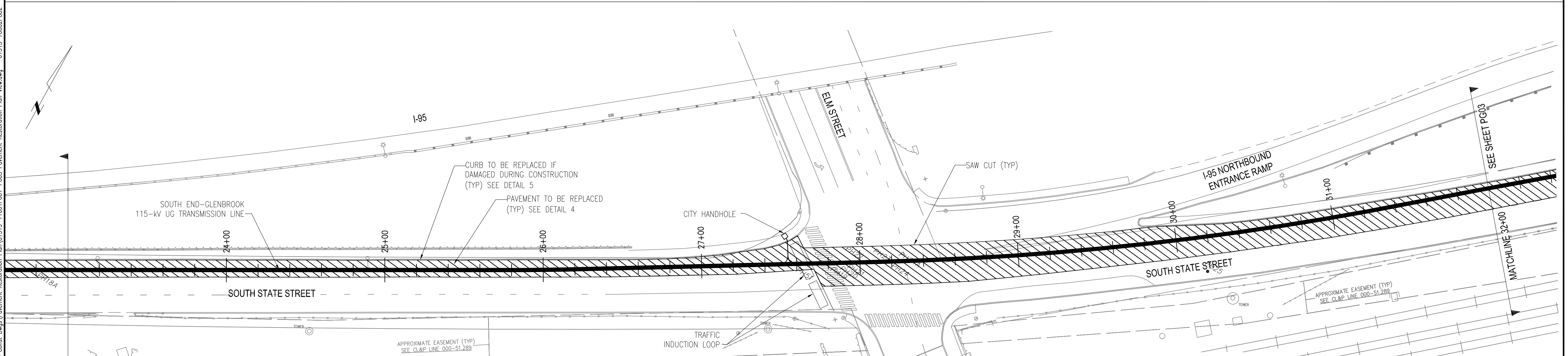
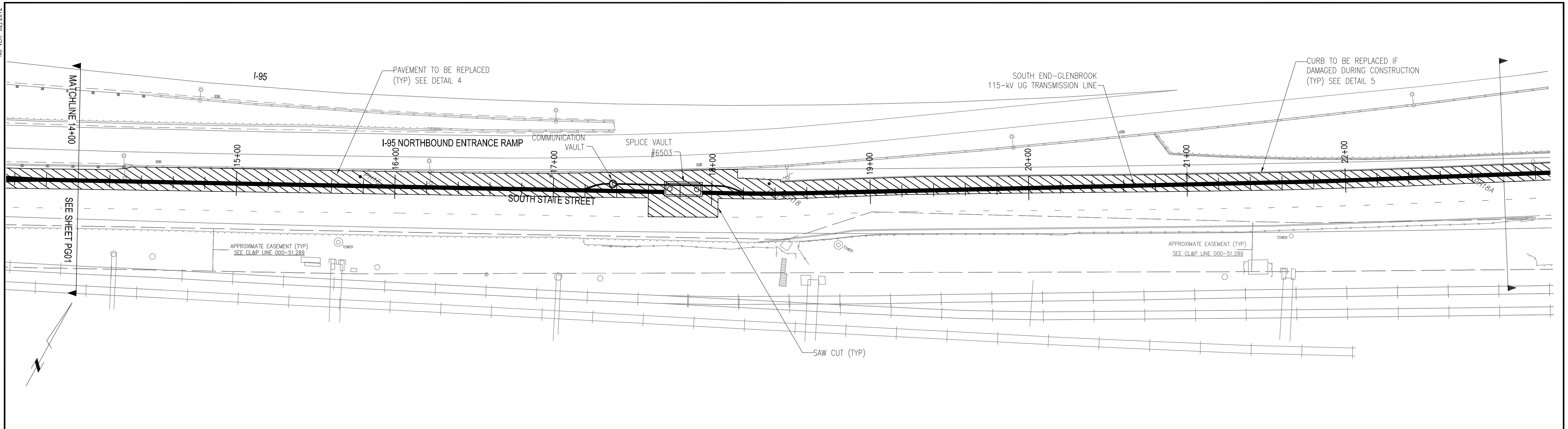
H-SCALE: 1" = 30'
V-SCALE: Z-1-2
R.E. DWG: 23370P1
R.E. PROJ. NUMBER: 000-51.326
NUSCO: 01515-70002PG01



"FOR CURRENT NUSCO PROPERTY RIGHTS REFER TO PROPERTY RECORD MAPPING - LOCATED IN TRANSMISSION SURVEY ENGINEERING/ROW DEPARTMENT"

NO.	DATE	AS BUILT REVISIONS	BY	CHK	APP	APP
-	-	-	-	-	-	-

10/28/2013 9:46 AM - hferming - R:\SIP\Projects\1272A\DD\DWG\08 Const DWG\Restoration Plan\1515-11001PG01-PC05 Pavement Restoration Plan View.dwg - 01515-7002PG02



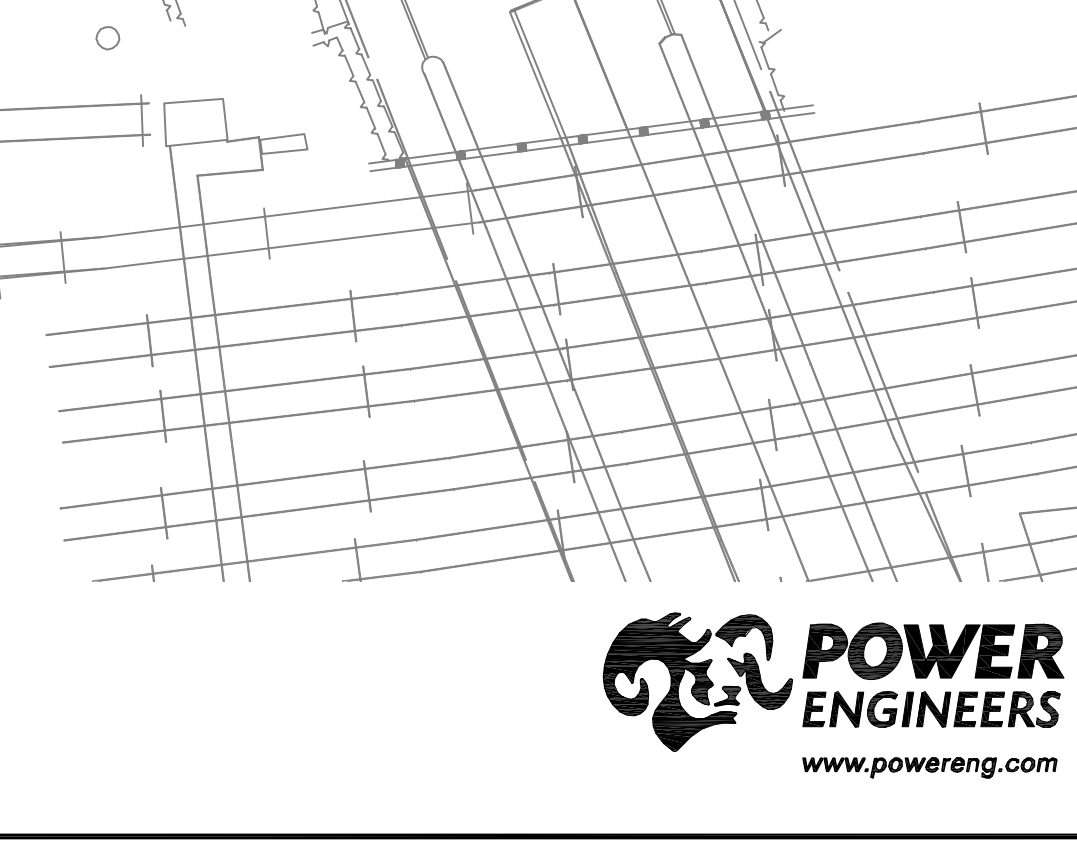
EXISTING PAVEMENT DEPTHS FROM TEST PITS

Test Pit #	Utility	Asphalt	Concrete
PH19	CATV	10 in	-
PH20	Electrical	10 in	-
PH21	Telephone	6 in	6 in
PH22	6" Gas (LP)	4 in	13 in
PH23	Fiber Optic	10 in	-
PH24A	Electrical	10 in	-

NOTE: A CONDOT BORING LOCATED NEAR ELM STREET AND S. STATE STREET INDICATES APPROXIMATELY 18 INCHES OF CONCRETE STARTING AT A DEPTH OF APPROXIMATELY 3.5 FEET.

LEGEND

PAVEMENT: LIMITS OF PAVEMENT REPLACEMENT AND LINE STRIPPING RESTORATION PER CITY OF STAMFORD STANDARDS AND SPECIFICATIONS. EXISTING PAVEMENT TO BE MILLED TO A DEPTH OF 1.5 INCHES OF AND REPLACED WITH 1.5" OF SUPER PAVE 0.375, LEVEL 2.



**PRELIMINARY
NOT FOR CONSTRUCTION**

REVISIONS DURING CONSTRUCTION

NO.	DATE	DESCRIPTION	BY	CHK	APP
D	10-25-13	ISSUED FOR REVIEW	BWF	CS	LH
C	9-20-13	ISSUED FOR REVIEW	BWF	CS	LH
B	9-17-13	ISSUED FOR REVIEW	BWF	CS	LH
A	9-03-13	ISSUED FOR REVIEW	BWF	CS	LH

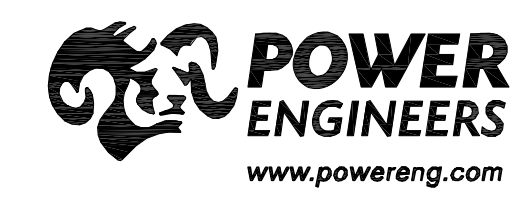
Northeast Utilities Service Co.
FOR CONNECTICUT LIGHT & POWER COMPANY

TITLE: **SOUTH END - GLENBROOK 1151 LINE
115-kV UNDERGROUND TRANSMISSION LINE**

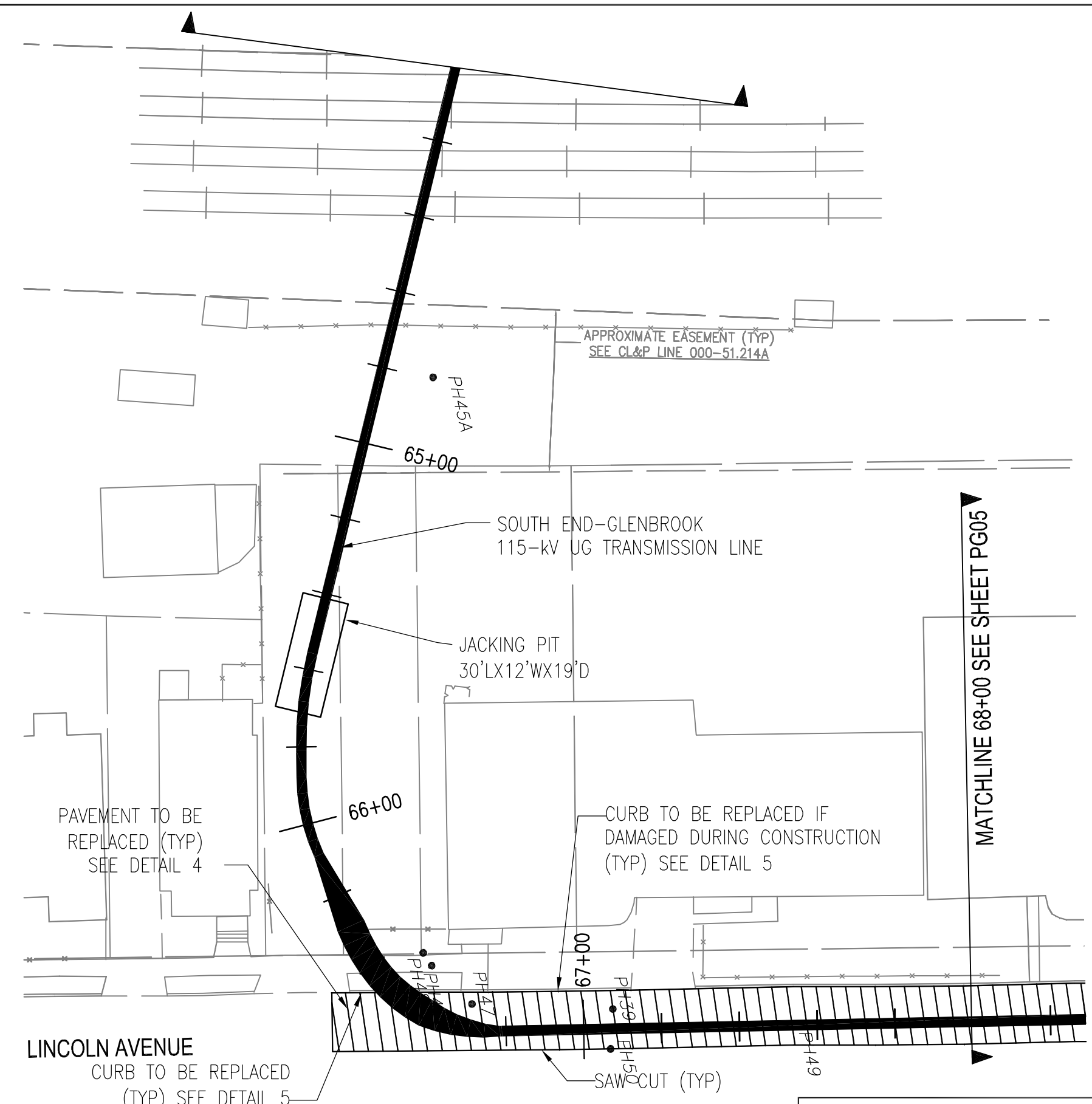
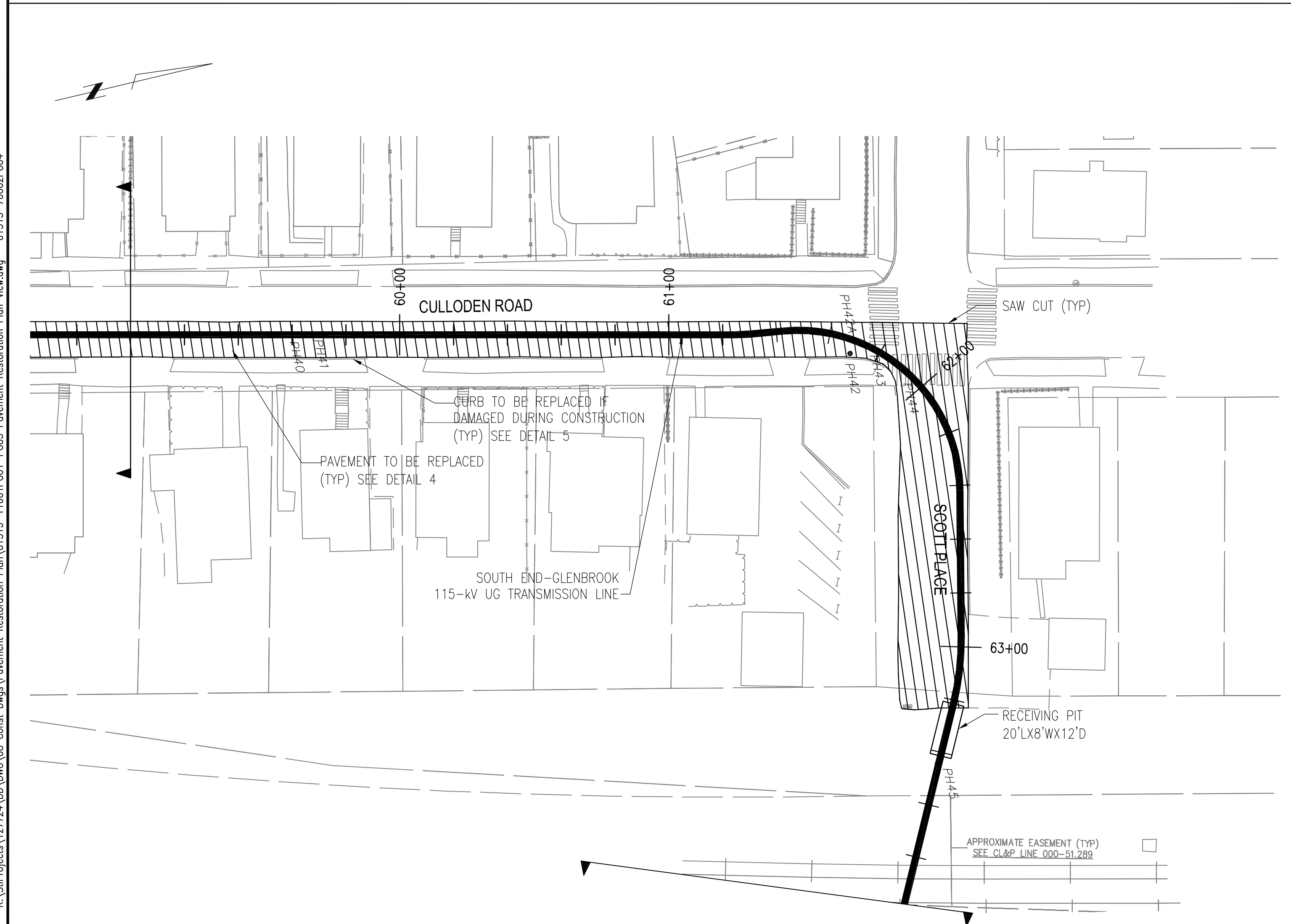
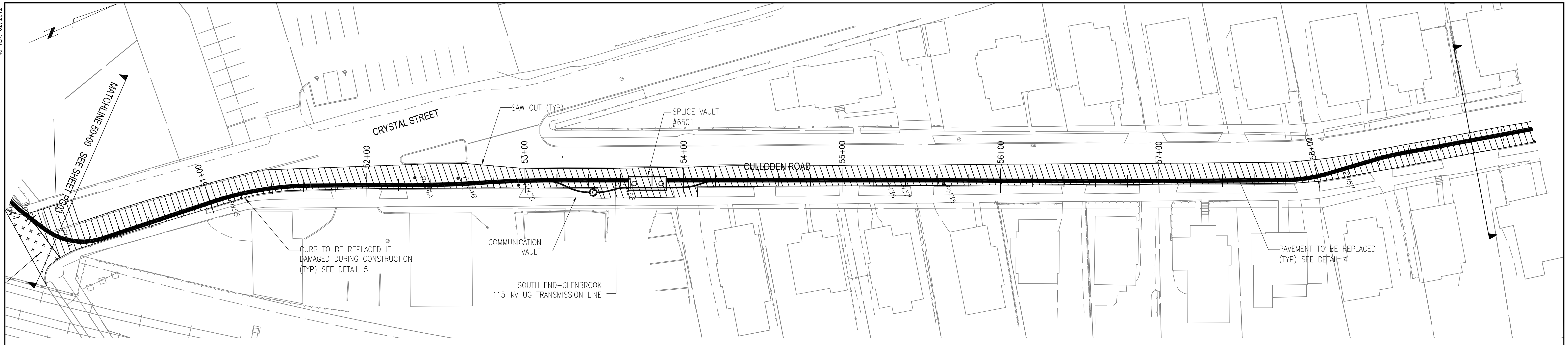
STAMFORD, CONNECTICUT

DATE	BY	CHK	APP	DATE	BY	CHK	APP
09-03-2013	BWF	CS	LH	09-03-2013	BWF	CS	LH

H-SCALE: 1" = 30'
V-SCALE: Z-1-2
R.E. DWG: 23370P1
R.E. PROJ. NUMBER: 000-51.326
NUSCO: 01515-7002PG02



"FOR CURRENT NUSCO PROPERTY RIGHTS REFER TO PROPERTY RECORD MAPPING - LOCATED IN TRANSMISSION SURVEY ENGINEERING/ROW DEPARTMENT"



LEGEND

CONCRETE: LIMITS OF CURB AND SIDEWALK REPLACEMENT RESTORATION PER CITY OF STAMFORD STANDARDS AND SPECIFICATIONS.

PAVEMENT: LIMITS OF PAVEMENT REPLACEMENT AND LINE STRIPPING RESTORATION PER CITY OF STAMFORD STANDARDS AND SPECIFICATIONS. EXISTING PAVEMENT TO BE MILLED TO A DEPTH OF 1.5 INCHES OF AND REPLACED WITH 1.5" OF SUPER PAVE 0.375, LEVEL 2.

EXISTING PAVEMENT DEPTHS FROM TEST PITS

Test Pit #	Utility	Asphalt	Concrete
PH44	Fiber Optic	5 in	-
PH56	Sewer lateral	7 in	-
PH57	Water lateral	7 in	-

**PRELIMINARY
NOT FOR CONSTRUCTION**

REVISIONS DURING CONSTRUCTION

NO.	DATE	DESCRIPTION	BY	CHK	APP	APP
E	10-25-13	ISSUED FOR REVIEW	BWF	CS	LH	
D	10-09-13	ISSUED FOR REVIEW	BWF	CS	LH	
C	9-20-13	ISSUED FOR REVIEW	BWF	CS	LH	
B	9-17-13	ISSUED FOR REVIEW	BWF	CS	LH	

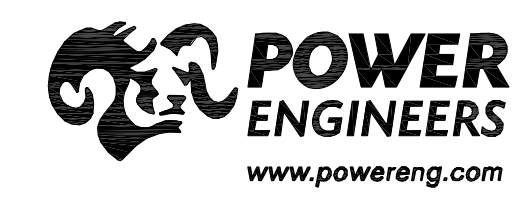
Northeast Utilities Service Co.
FOR CONNECTICUT LIGHT & POWER COMPANY

**SOUTH END - GLENBROOK 1151 LINE
115-kV UNDERGROUND TRANSMISSION LINE**

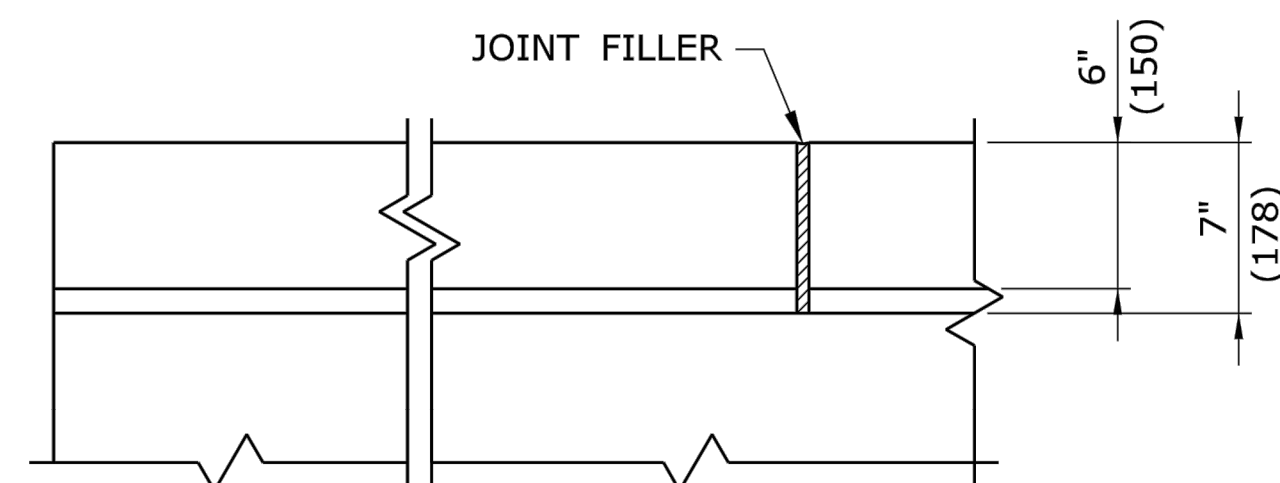
STAMFORD, CONNECTICUT

BY	BWF	CHKD	CS	APP	LH	APP
DATE	09-03-2013	DATE	09-03-2013	DATE	09-03-2013	DATE
H-SCALE	1" = 30'	SIZE	D	SURVEY JOB #	S20355	
V-SCALE		V.S.	Z-1-2	R.E. DWG	23370P1	
R.E. PROJ. NUMBER	000-51.326	NUSCO	01515-70002PG04			

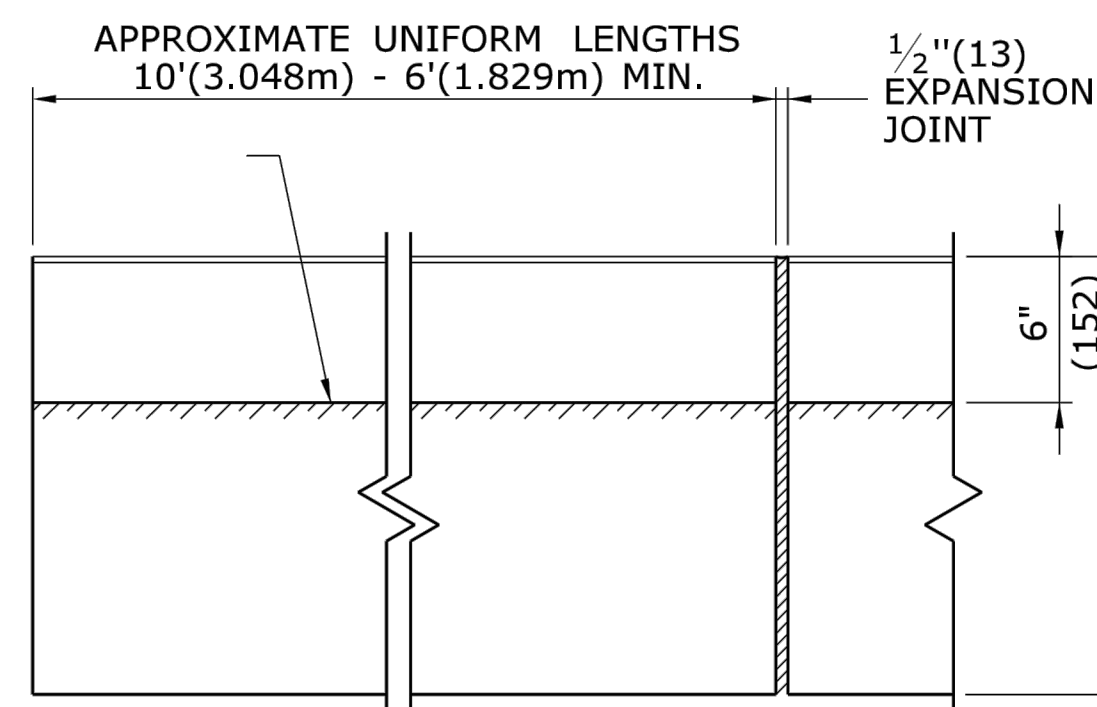
"FOR CURRENT NUSCO PROPERTY RIGHTS REFER TO PROPERTY RECORD MAPPING - LOCATED IN TRANSMISSION SURVEY ENGINEERING/ROW DEPARTMENT"



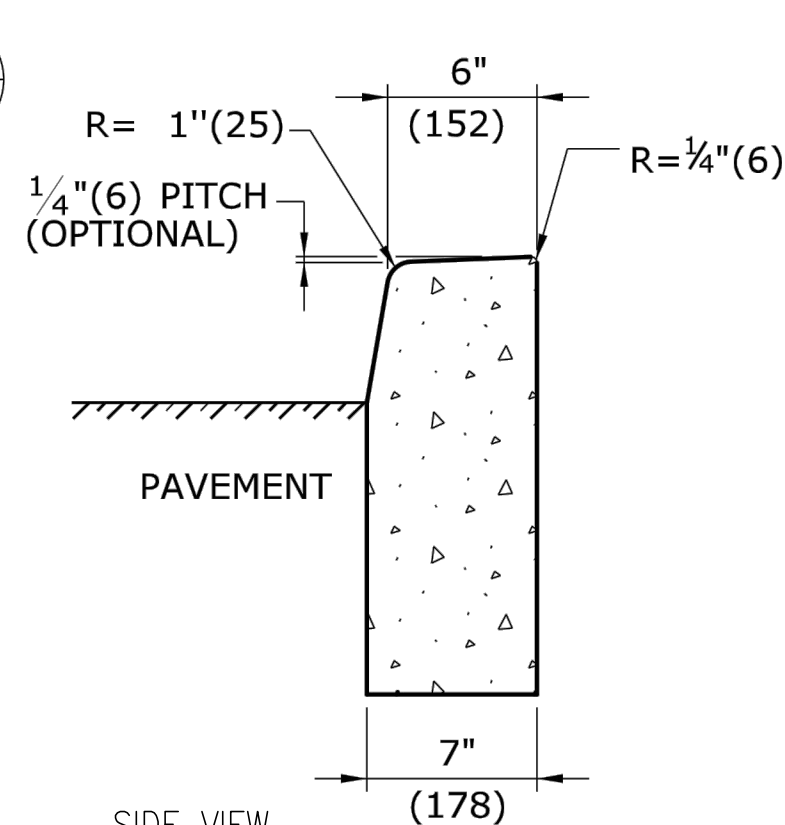
NO.	DATE	AS BUILT REVISIONS	BY	CHK	APP	APP



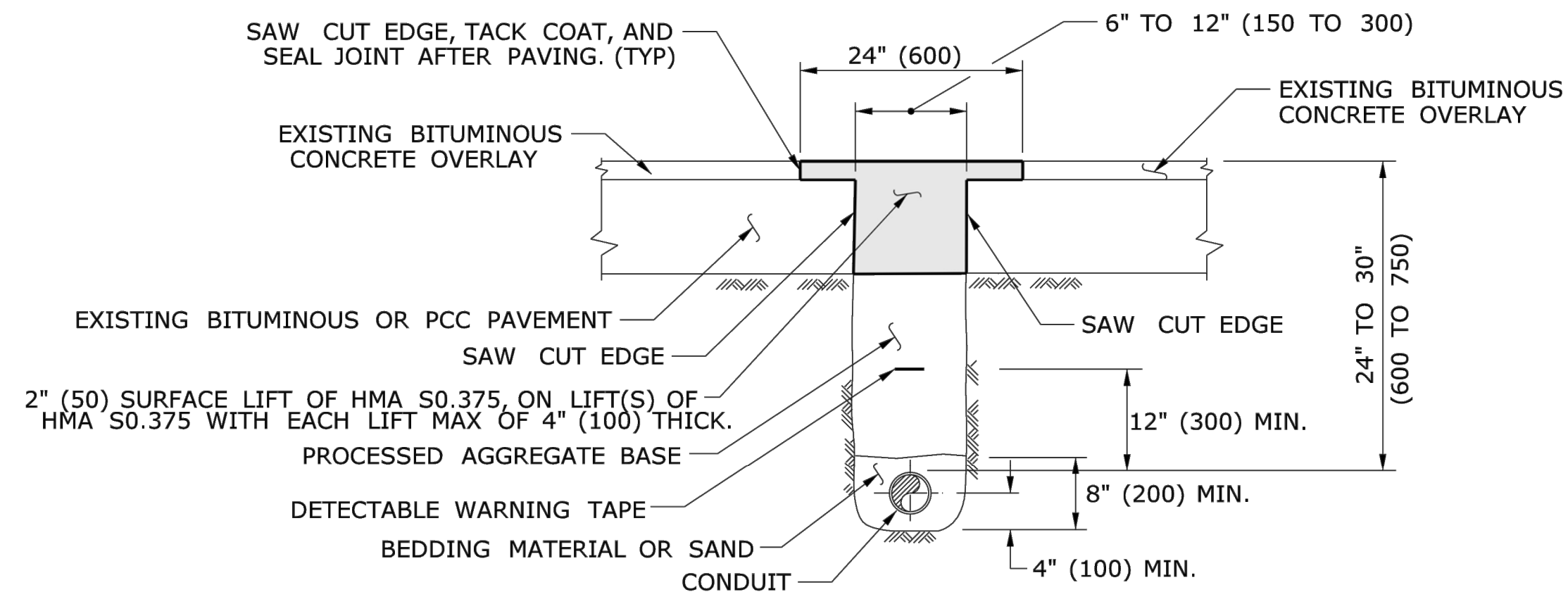
PLAN



CTDOT TYP 6" (150) CONCRETE CURBING DETAIL
DETAIL
SCALE N.T.S.



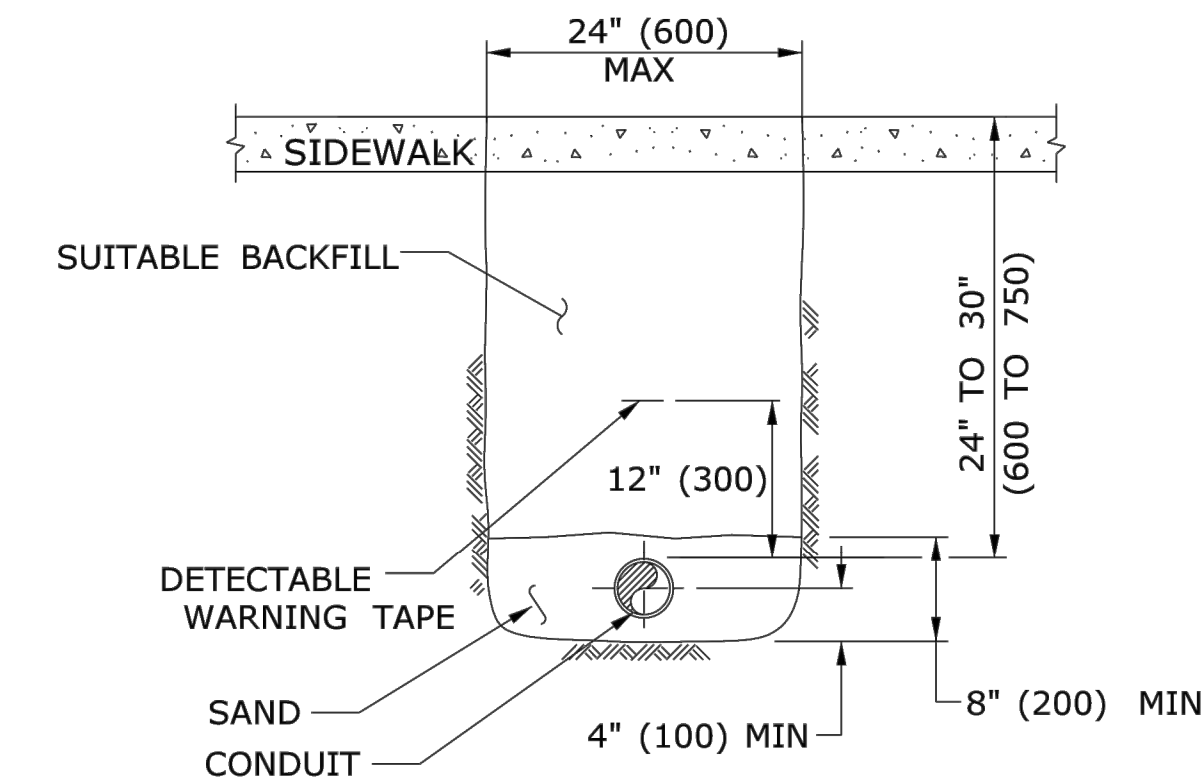
SIDE VIEW SECTION
SCALE N.T.S.



PAVEMENT - BITUMINOUS CONCRETE OR OVERLAYED PORTLAND CEMENT CONCRETE

- NOTES:
STANDARD SPECIFICATIONS, ARTICLE: 3.04 & 4.06.03
- TOTAL HOT MIX ASPHALT (HMA) THICKNESS TO MATCH EXISTING BITUMINOUS CONCRETE AND PORTLAND CEMENT CONCRETE (PCC) THICKNESS.
 - WHEN ALLOWED BY ENGINEER, USE CONTROLLED LOW STRENGTH MATERIAL (CLSM) AS BEDDING MATERIAL. TOP OF CLSM AT LEAST 20" (500) BELOW SURFACE.

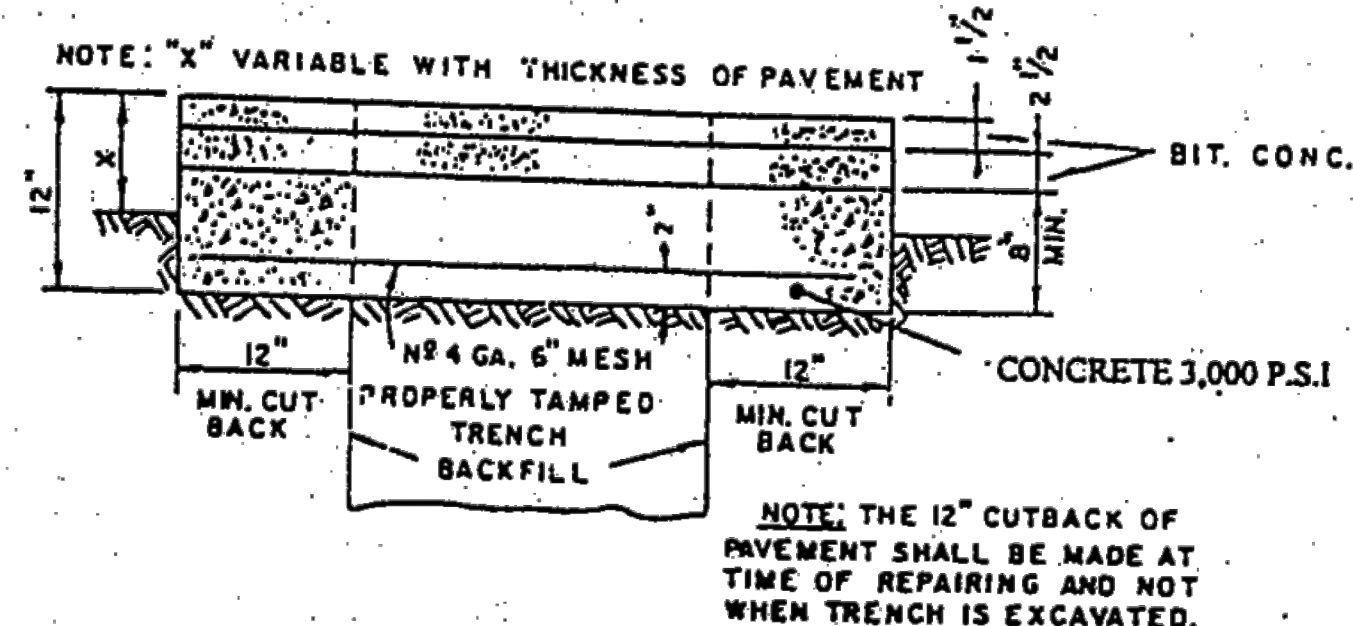
CTDOT PAVEMENT DETAIL
DETAIL
SCALE N.T.S.



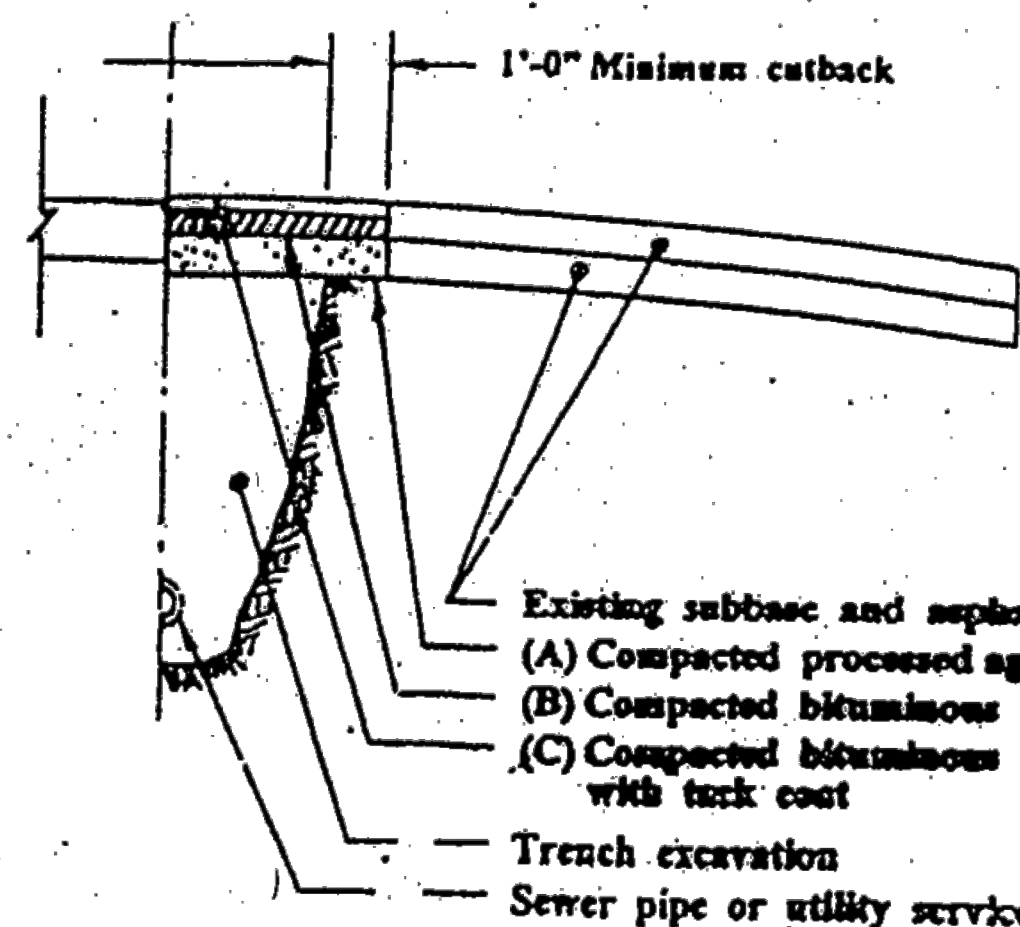
SIDEWALK

- NOTES:
STANDARD SPECIFICATIONS, ARTICLE: 9.21 & 9.22
- WHERE CONCRETE SIDEWALK DAMAGED OR CUT, REPLACE THE ENTIRE SECTION BETWEEN JOINTS. REPLACEMENT SIDEWALK IS PAID FOR AT THE CONTRACT UNIT PRICE FOR "CONCRETE SIDEWALK".

CTDOT SIDEWALK DETAIL
DETAIL
SCALE N.T.S.

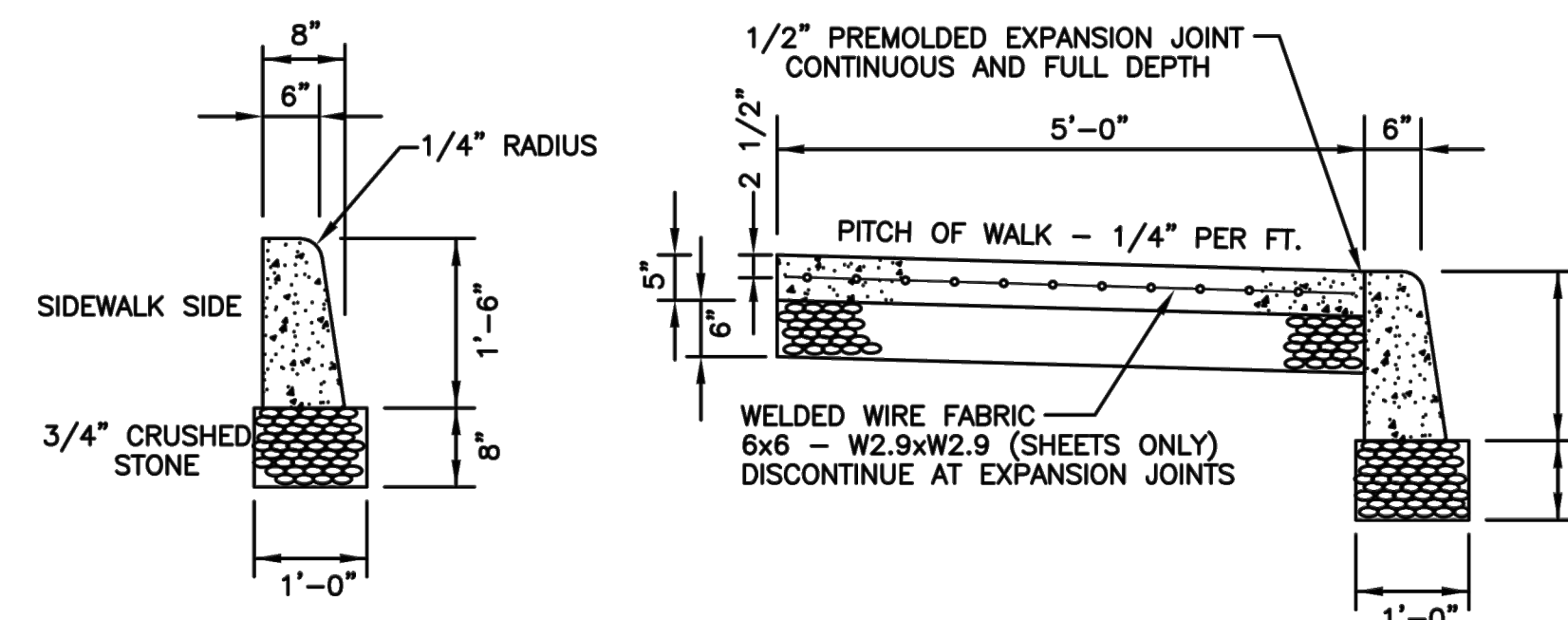


PAVEMENT OVER CONCRETE BASE



CITY OF STAMFORD PERMANENT TRENCH REPAIR
DETAIL
SCALE N.T.S.

- Arterial Roads
- (A) 8"
 - (B) 4-1/2" Class 1
 - (C) 1-1/2" Class 2
 - (D) Tack coat RC-O
- Collector Streets
- (A) 8"
 - (B) 2-1/2" Class 1
 - (C) 1-1/2" Class 2
 - (D) Tack coat RC-1



- NOTES:
- ALL CURBING TO BE CAST-IN-PLACE.
 - A 1/8" STEEL DIVISION PLATE SHALL BE PLACED AT EVERY 10 FEET OF CURBING & REMOVED AFTER CONCRETE HAS SET. A 1/2" APPROVED BITUMINOUS JOINT SHALL BE PLACED AT A MAX. OF EVERY 20 FEET COINCIDING WITH EXPANSION JOINT IN SIDEWALK.
 - CONTRACTOR TO CONSTRUCT 2" BATTER ON CONCRETE CURBING (STREET SIDE ONLY)

CITY OF STAMFORD STANDARD CURB & SIDEWALK DETAIL
DETAIL
SCALE N.T.S.

PRELIMINARY
NOT FOR CONSTRUCTION

REVISIONS DURING CONSTRUCTION			
C	10-25-13	ISSUED FOR REVIEW	BWF CS LH
B	9-20-13	ISSUED FOR REVIEW	BWF CS LH
A	9-17-13	ISSUED FOR REVIEW	BWF CS LH

Northeast Utilities Service Co.
FOR
CONNECTICUT LIGHT & POWER COMPANY

TITLE
SOUTH END - GLENBROOK 1151 LINE
115-KV UNDERGROUND TRANSMISSION LINE

STAMFORD, CONNECTICUT			
BY	BWF	CHK	CS
DATE	09-17-2013	DATE	09-17-2013
H-SCALE	N.T.S.	SIZE	ID
V-SCALE		V.S.	Z-1-2
R.E. PROJ. NUMBER	000-51.326	NUSCO	23370P1



"FOR CURRENT NUSCO PROPERTY RIGHTS REFER TO PROPERTY RECORD MAPPING - LOCATED IN TRANSMISSION SURVEY ENGINEERING/ROW DEPARTMENT"

NO.	DATE	AS BUILT REVISIONS	BY	CHK	APP	APP