

**Appendix B**  
**Agency Correspondence**

---

## **Appendix B.1**

**Connecticut State Historic Preservation Office**

---



**State Historic  
Preservation Office**



July 5, 2012

Ms. Amanda Mayhew  
Northeast Utilities Service Company  
107 Selden Street  
Berlin, CT 06037

Subject: Preliminary Archaeological Assessment of the Proposed Stamford Cable Reliability Project,  
Stamford, Connecticut

Dear Ms. Mayhew:

The State Historic Preservation Office has reviewed the preliminary archaeological assessment for the referenced project prepared by Heritage Consultants, LLC and the supplemental information provided to our office addressing alternative alignments for the proposed underground electrical transmission cables. Heritage conducted background research, including a review of environmental characteristics and historical mapping of the proposed routes for the new electrical utilities to assess the potential for the project to affect significant archaeological resources. No field investigations were conducted during this assessment. Based on the extensive alterations to the landscapes within the Area of Potential Effects, it is Heritage's professional opinion that intact soil deposits are unlikely to be present. This assessment is based on the continuing redevelopment of the area surrounding the Interstate Route 95 corridor and the intensity of construction within the project limits. Heritage recommends no additional archaeological investigations based on the remote potential for intact soils to be present. SHPO notes that the new underground cable will be installed beneath existing roadways that have already been affected by the installation of gas, electrical, fiber optic, sewer, and water utilities, as well as road construction and realignments. We concur with Heritage that there is a low potential for intact and significant archaeological resources to be extant within the Area of Potential Effects, including the new alternatives now being considered by Northeast Utilities. Based on the information provided to our office, SHPO believes that no additional archaeological investigations of this project are warranted.

The State Historic Preservation Office appreciates the opportunity to review and comment upon this project. For further information, please me at (860) 256-2761 or [daniel.forrest@ct.gov](mailto:daniel.forrest@ct.gov).

Sincerely,

A handwritten signature in blue ink that reads 'Daniel T. Forrest'.

Daniel T. Forrest  
Deputy State Historic Preservation Officer



## *INTEGRATED HISTORIC PRESERVATION PLANNING*

June 29, 2012

Ms. Amanda Mayhew  
Northeast Utilities Service Company  
107 Selden Street  
Berlin, CT 06037

**RE: Addendum to a Preliminary Archeological Assessment of the proposed Stamford Cable Reliability Project in Stamford, Connecticut**

Ms. Mayhew:

Heritage Consultants, LLC, is pleased to have this opportunity to provide Northeast Utilities with the following addendum to the previously submitted preliminary archeological assessment of the proposed Stamford Cable Reliability Project in Stamford, Connecticut (Figure 1). The original review of this project was submitted to Northeast Utilities on May 2, 2012. Since that time, project plans have changed such that portions of the previously proposed corridor have been abandoned and new alternate routes are being considered (Figure 2). Specifically, an alternate route is proposed along the northern side of I-95 and continuing along Lafayette Street and Clovelly Roads. Heritage Consultants, LLC has reviewed the currently proposed corridors based upon the previously completed historic, cartographic, and previous investigation efforts. These images reveal that the previous interpretations of the proposed project area still hold true, namely, that given the substantial amount of development within the proposed corridors, it is unlikely that intact soil deposits remain. A review of environmental characteristics, historic maps, and previously recorded cultural resources was used to assess the potential for the proposed project corridor to contain intact subsurface deposits. A review of existing utility corridors also was completed and showed that existing gas, fiber optic, telephone, water, sewer, electric, and drainage underground facilities already exist within the proposed corridors. Therefore, it is the professional opinion of Heritage Consultants, LLC that further archeological investigations of the currently proposed Stamford Cable Reliability Project in Stamford, Connecticut are not warranted.

If you have any questions regarding this Technical Memorandum, or if we may be of additional assistance with this or any other projects you may have, please do not hesitate to call us at 860-667-3001 or email us [info@heritage-consultants.com](mailto:info@heritage-consultants.com). We are at your service.

Sincerely,

Catherine M. Labadia, M.A.  
President & Principal Investigator

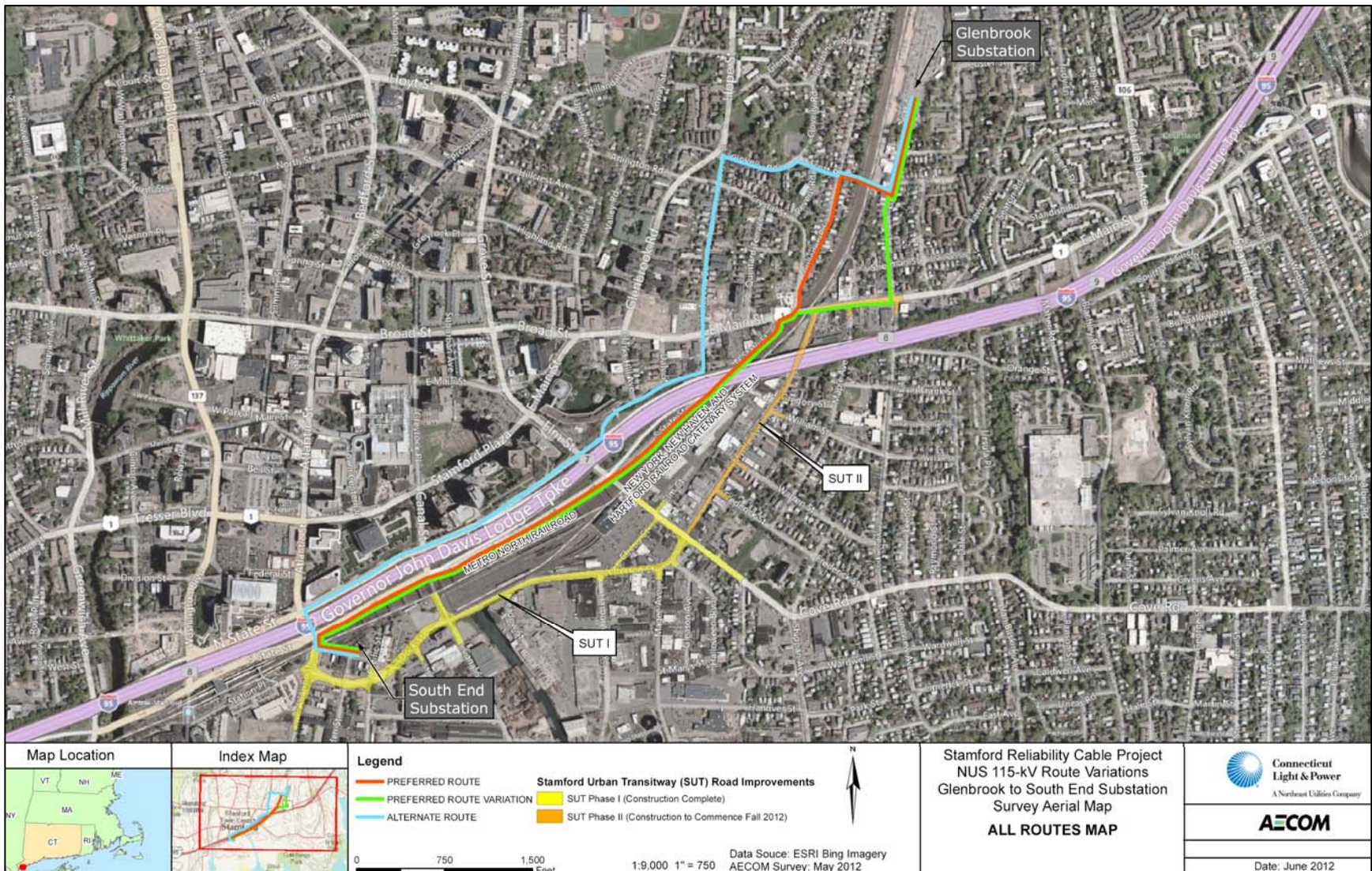


Figure 1. Currently proposed construction plans depicting the preferred and alternate routes associated with the proposed Stamford Cable Reliability Project in Stamford, Connecticut.

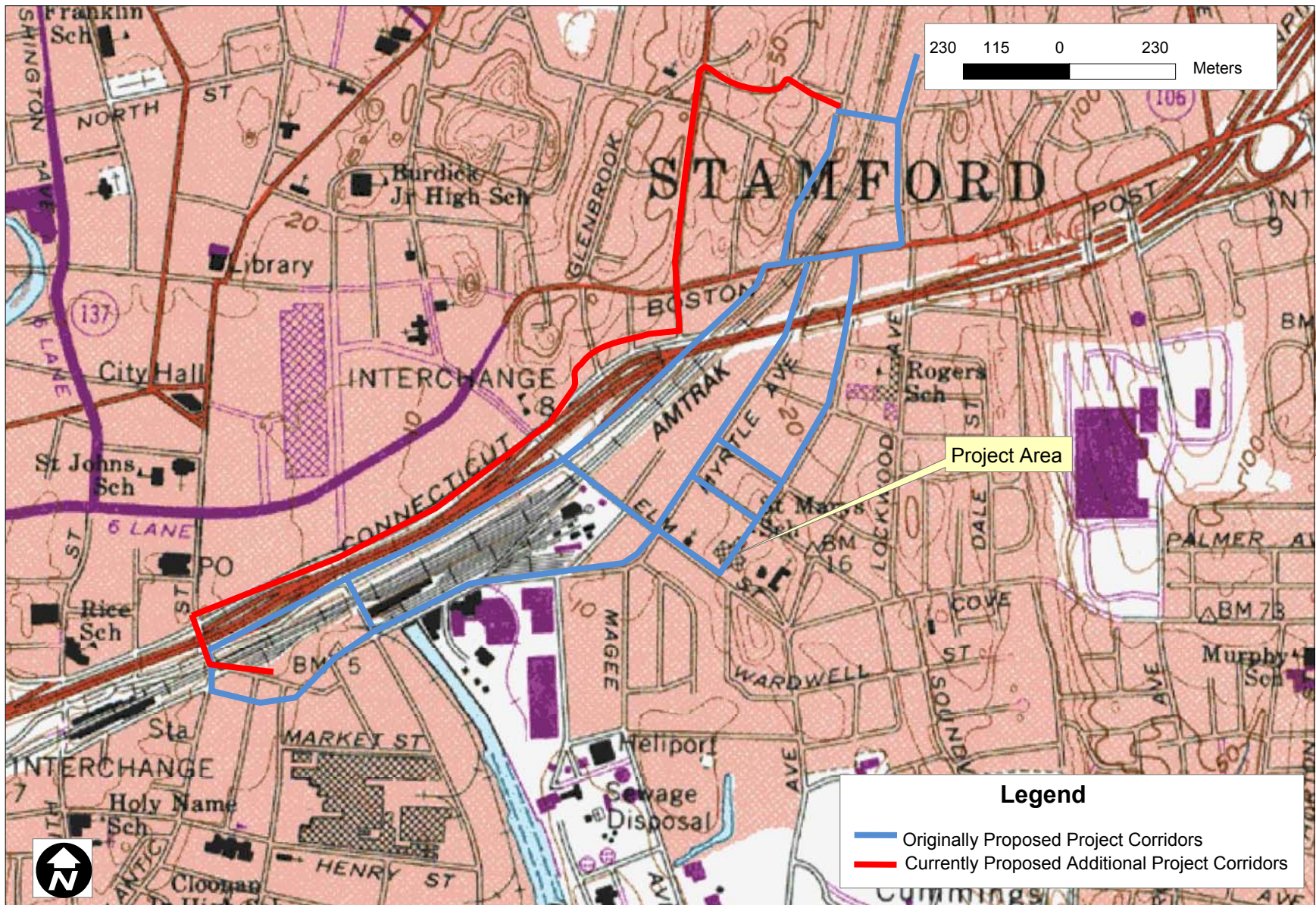


Figure 2. Excerpt from a recent USGS 7.5' series topographic map depicting the approximate location of previously proposed and additional currently proposed project corridors in Stamford, Connecticut.



**Northeast  
Utilities**

107 Selden Street, Berlin, CT 06037  
Northeast Utilities Service Company  
P.O. Box 270  
Hartford, CT 06141-0270  
(860) 665-2036

May 31, 2012

Daniel Forrest, Staff Archaeologist  
Environmental Review Coordinator  
Connecticut Commission on Culture & Tourism  
One Constitution Plaza, 2<sup>nd</sup> Floor  
Hartford, CT 06103

**Re: Preliminary Archeological Assessment of the proposed Stamford Cable Reliability  
Project in Stamford, Connecticut**

Dear Mr. Forrest:

The Connecticut Light and Power Company (CL&P) is proposing to install and operate an underground 115-kilovolt ("kV") transmission line in Stamford, Connecticut. The proposed 1.5 mile transmission line will be placed within streets between CL&P's existing South End Substation located on Manhattan Street and the existing Glenbrook Substation located on Lincoln Street. The purpose of the project is to meet the Stamford's growing energy use and to improve reliability in the area. CL&P will be filing an Application of Public Need and Environmental Compatibility with the Connecticut Siting Council and consultation with your office will be used in the Application.

Heritage Consultants, LLC completed a Preliminary Archeological Assessment of the proposed route and possible alternative routes. The Assessment includes a review of the existing cultural resource data as well as a review of historic maps.

We respectfully request a written opinion from your office regarding the potential effect or no effect of the proposed project on cultural resources. Therefore, two copies of the Preliminary Archeological Assessment completed by Heritage Consultants, LLC are being submitted for your review and comment. At your earliest convenience, please forward the correspondence to my attention.

Thank you in advance for your prompt consideration of this request. If you have any questions or require additional information, please contact Amanda Mayhew at (860) 665-6953 or via email at [Amanda.Mayhew@nu.com](mailto:Amanda.Mayhew@nu.com).

Sincerely,

John R. Morissette

Attachments



## *INTEGRATED HISTORIC PRESERVATION PLANNING*

May 2, 2012

Ms. Amanda Mayhew  
Northeast Utilities Service Company  
107 Selden Street  
Berlin, CT 06037

**RE: Preliminary Archeological Assessment of the proposed Stamford Cable Reliability Project in Stamford, Connecticut**

Ms. Mayhew:

Heritage Consultants, LLC, is pleased to have this opportunity to provide Northeast Utilities, with the following preliminary archeological assessment of the proposed Stamford Cable Reliability Project in Stamford, Connecticut (Figures 1 and 2). The current project entailed completion of an existing conditions cultural resources summary based on the examination of GIS data obtained from the Connecticut State Historic Preservation Office, as well as historic maps, aerial photographs, and topographic quadrangles maintained by Heritage Consultants, LLC. This investigation did not consider the effects of the proposed construction upon built resources, and it is based upon project location information provided to Heritage Consultants, LLC by Northeast Utilities. The objectives of this study were: 1) to gather and present data regarding previously identified cultural resources situated within the vicinity of the Areas of Potential Effect; 2) to investigate the proposed project corridors in terms of its natural and historical characteristics; and 3) to evaluate the need for completing additional cultural resources investigations. At this time, no field investigation of the corridor has been conducted.

A review of previously recorded cultural resources on file with the Connecticut State Historic Preservation Office revealed that no previously recorded archeological sites are situated within 402 m (0.25 mi) of the project corridor. However, numerous inventoried historic structures and several properties listed on the National Register of Historic Places are situated immediately adjacent to the proposed project corridors (Figures 3 and 4).

The city of Stamford was well-established port city by the end of the eighteenth century and was already a New York City suburb by the late nineteenth century. Even by this early date, New York City workers were not only building vacation homes in Stamford, but also establishing permanent residences from which they would commute to work. Historic maps of the project region depict a well-established transportation network and numerous buildings. However, the immediate vicinity of the proposed project area mostly contained swamp and the beginning of expanding residential development and associated civic buildings (Figures 5 through 8). A series of aerial photographs from the early twentieth century until recently demonstrates the dynamic nature of the city (Figures 9 through 13). Figure 9, an aerial photograph from 1934 depicts the urban residential and industrial nature of the project area. At this time, the landscape was already densely populated with buildings and infrastructure. However, by the mid-nineteenth century many of the residential blocks of buildings were being replaced by larger industrial or residential high-rise structures. This trend continued into the twenty-first century, and is particularly



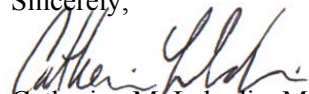
evident along the northern edge of the project corridor. Finally, a graphic depicting the building footprints for historic and modern structures is presented in Figure 14 to further demonstrate the evolving nature of this part of Stamford.

Environmental characteristics frequently are used to predict the location of archeological sites. Typically distance to water, slope, and soil types are included as part of these predictive models. Favorable conditions are characterized by gently sloping, well-drained soils in close proximity to fresh water. While much of the extant corridor is comprised of these favorable conditions, large portions of it have also been substantially impacted by modern development. The project corridors are situated within soil series designated as either Udorthents or Urban Land. While Udorthents are characterized by soils that have been substantially disturbed through cutting and filling activities, Urban Land is described as a land surface where at least 85% of it is covered by streets, parking lots, buildings and other impervious surfaces. Generally, the original soils within these series have been so significantly altered through excavating or filling that no other soil designation is possible.

A review of environmental characteristics, historic maps, and previously recorded cultural resources was used to assess the potential for the proposed project corridor to contain intact subsurface deposits. A review of existing utility corridors also was completed and showed that existing gas, fiber optic, telephone, water, sewer, electric, and drainage underground facilities already exist within the proposed corridors (Figure 15). Given the substantial amount of development within the proposed corridors, it is unlikely that intact soil deposits remain. Therefore, it is the professional opinion of Heritage Consultants, LLC that further archeological investigations of the proposed Stamford Cable Reliability Project in Stamford, Connecticut is not warranted.

If you have any questions regarding this Technical Memorandum, or if we may be of additional assistance with this or any other projects you may have, please do not hesitate to call us at 860-667-3001 or email us [info@heritage-consultants.com](mailto:info@heritage-consultants.com). We are at your service.

Sincerely,



Catherine M. Labadia, M.A.

President & Principal Investigator

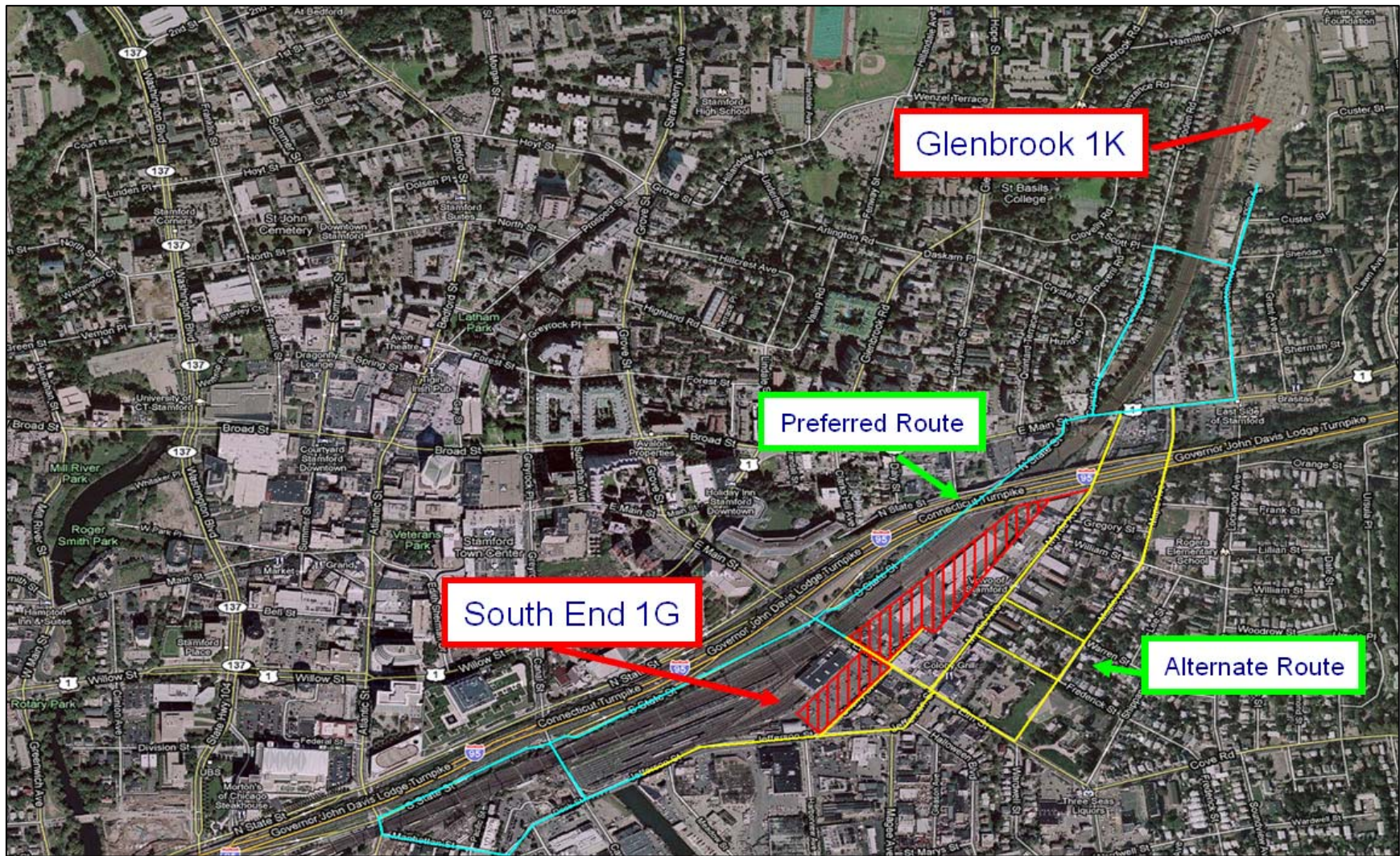


Figure 1. Excerpt from a recent aerial photograph depicting the preferred and alternate routes associated with the proposed Stamford Cable Reliability Project in Stamford, Connecticut.

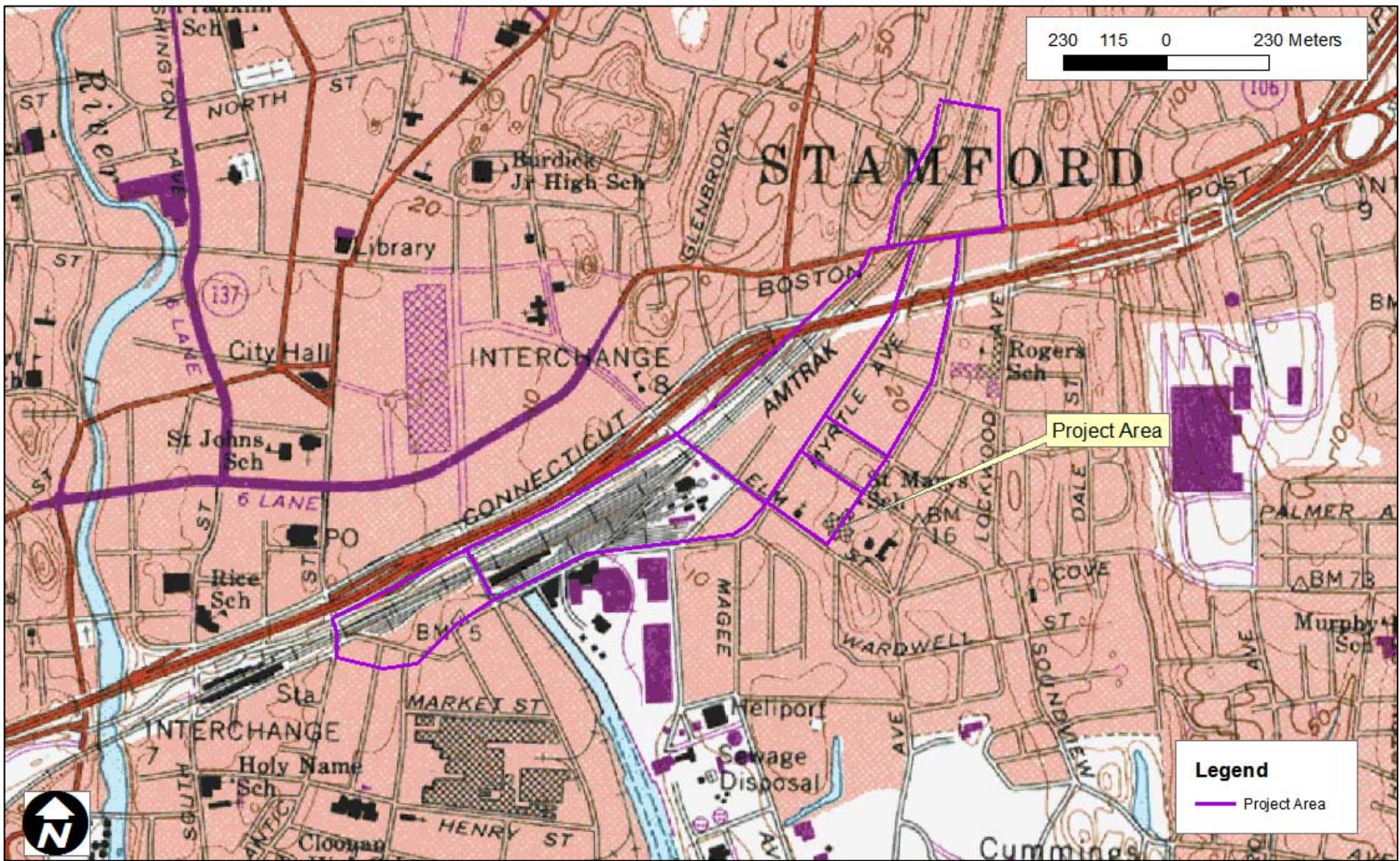


Figure 2. Excerpt from a recent USGS 7.5' series topographic map depicting the approximate location of proposed underground utility corridors in Stamford, Connecticut.

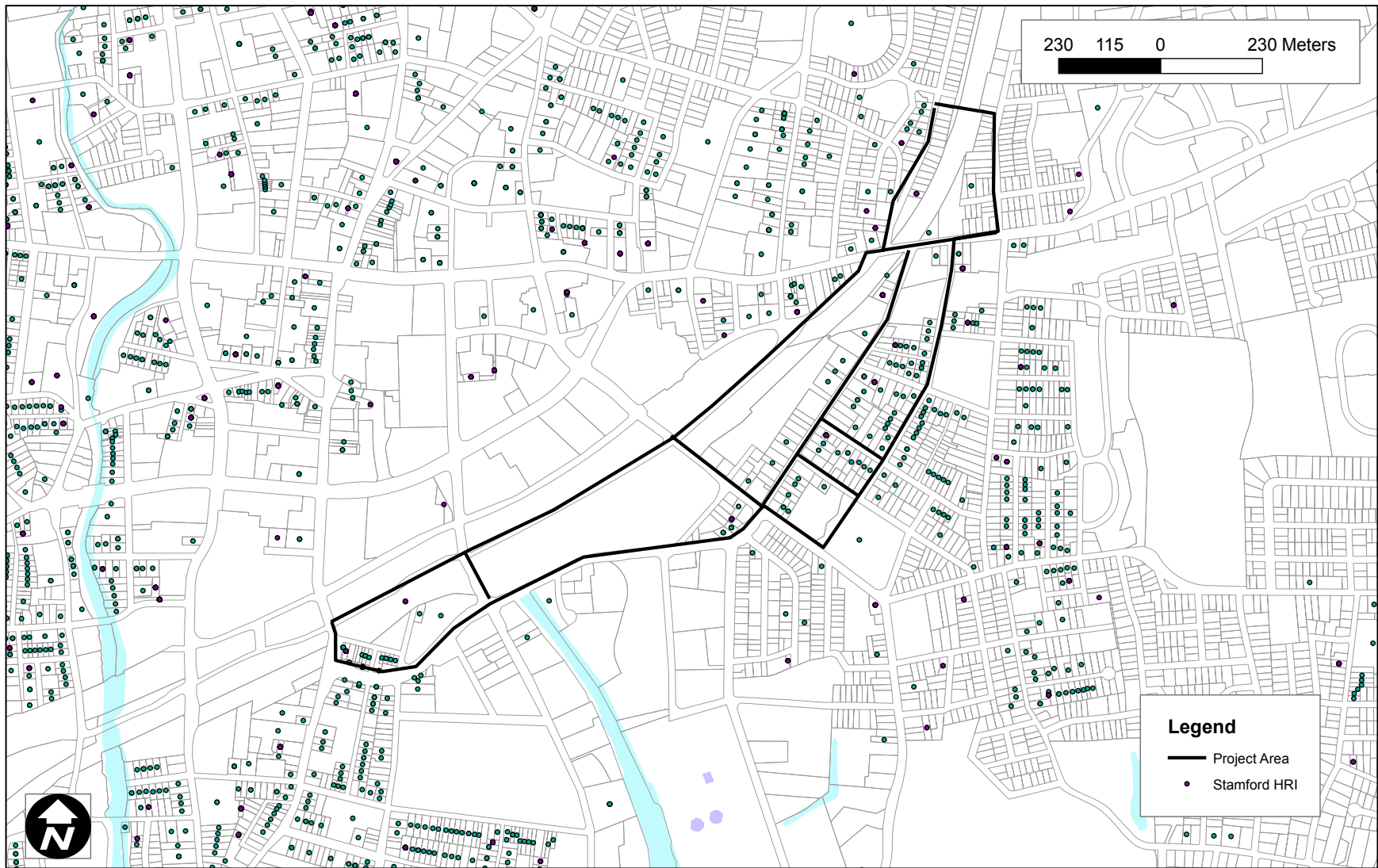


Figure 3. Map of structures previously recorded in the Stamford Historic Resources Inventory (HRI) situated in the vicinity of the proposed Stamford Cable Reliability Project in Stamford, Connecticut.

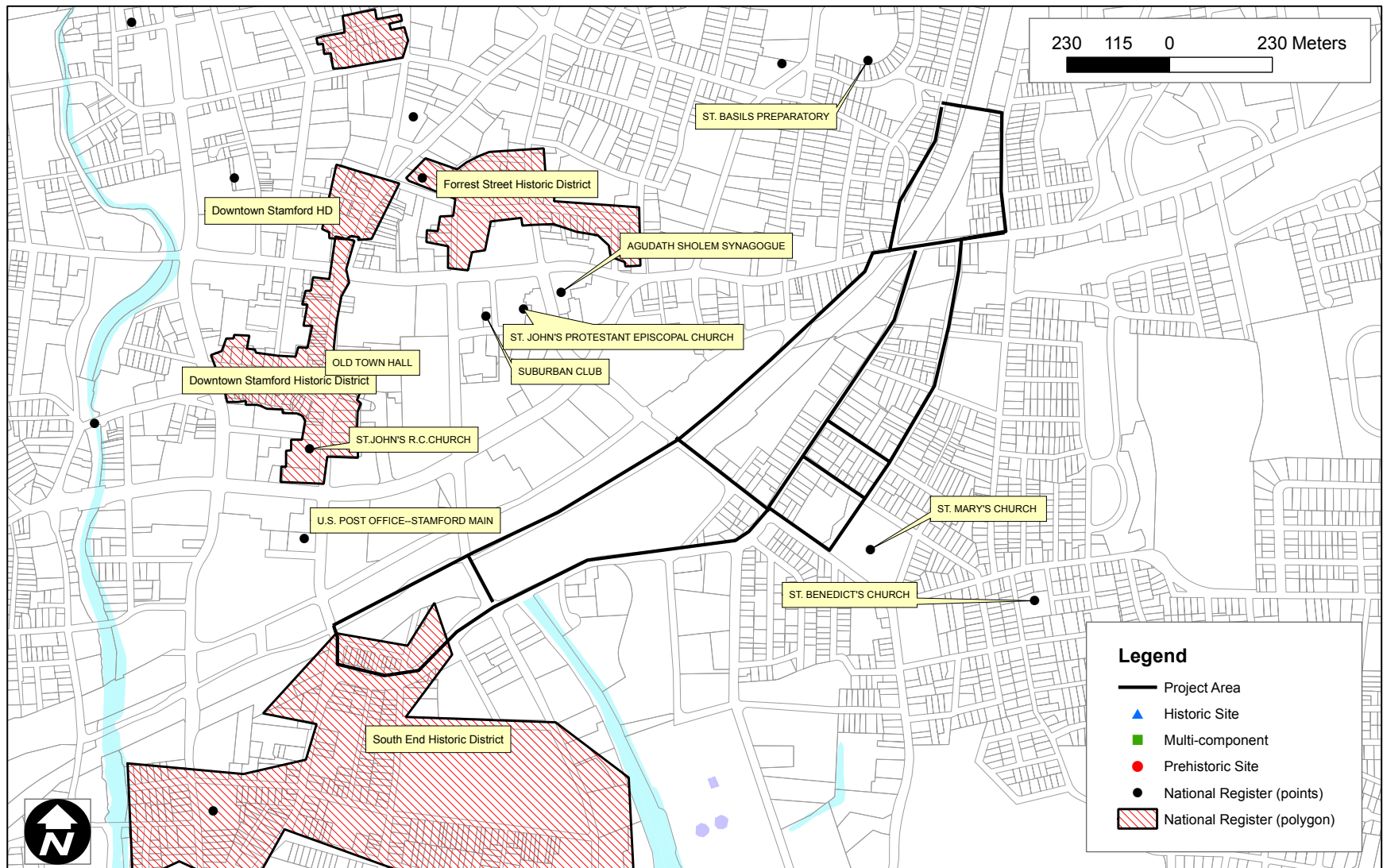


Figure 4. Map of properties listed on the National Register of Historic Places situated in the vicinity of the proposed Stamford Cable Reliability Project in Stamford, Connecticut.

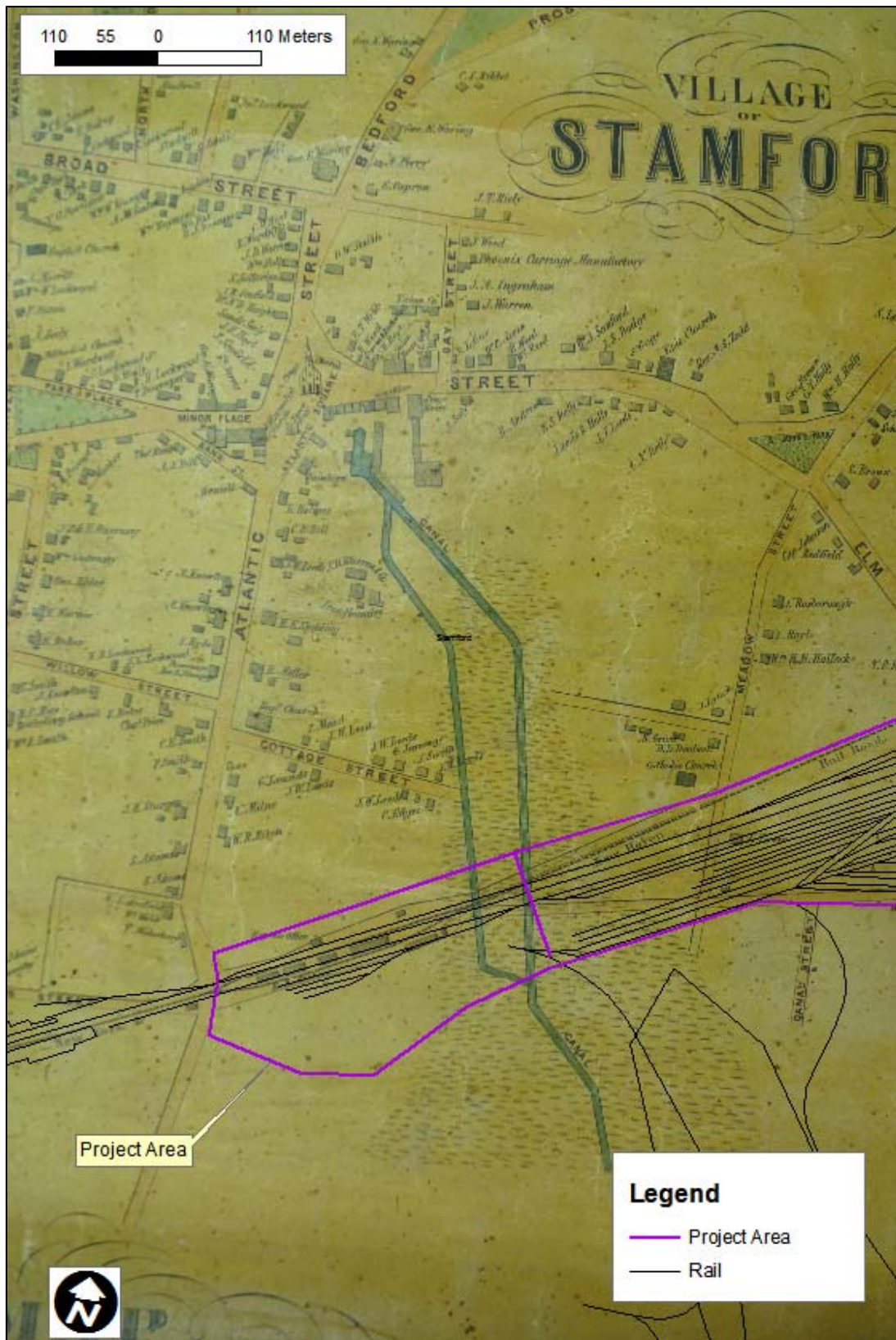


Figure 5. Excerpt from an historic 1851 map depicting a portion of the proposed Stamford Cable Reliability Project in Stamford, Connecticut.

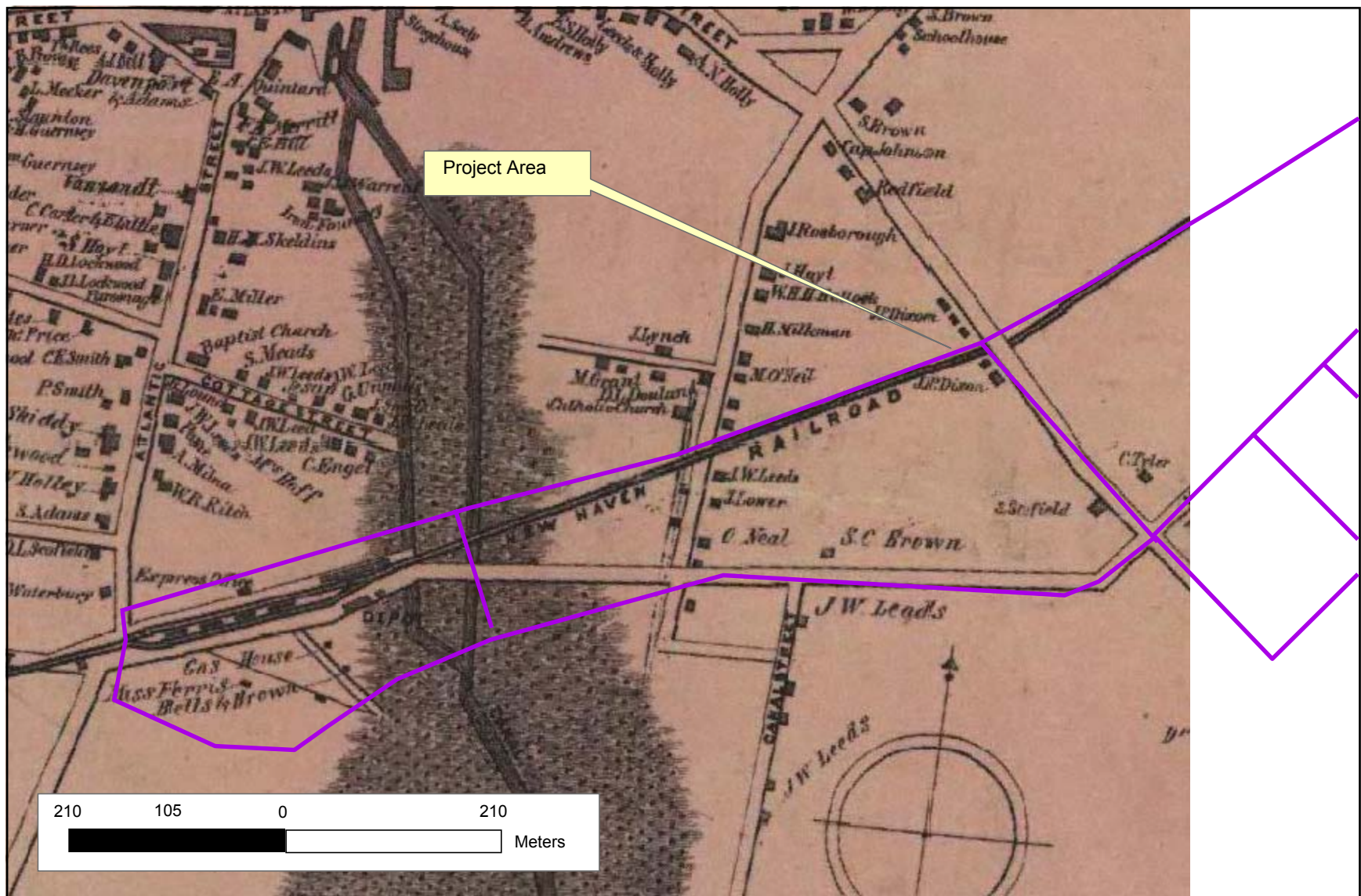


Figure 6. Excerpt from an historic 1856 map depicting a portion of the proposed Stamford Cable Reliability Project in Stamford, Connecticut.

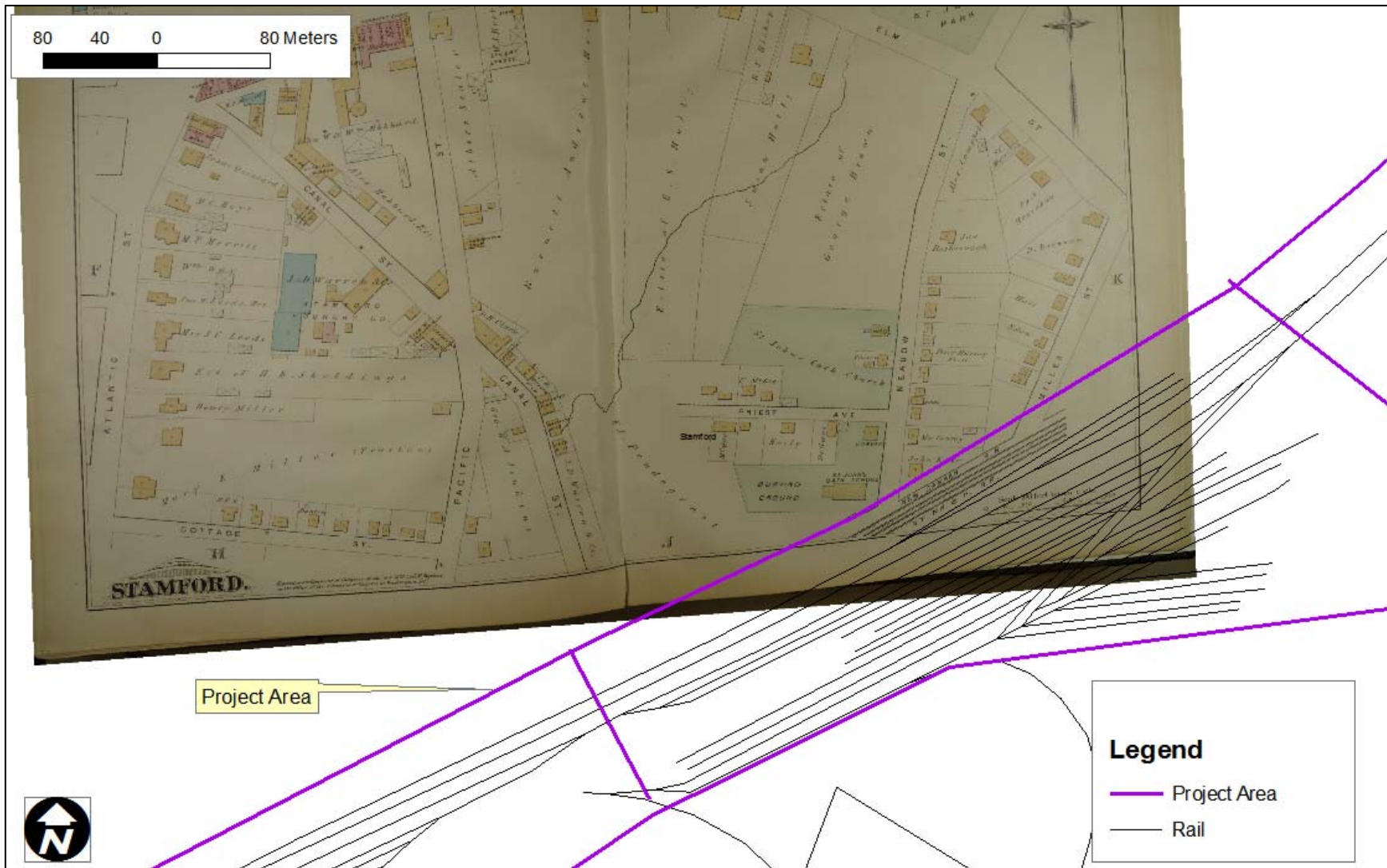


Figure 7. Excerpt from an 1879 Sanborn map depicting the approximate location of a portion of the proposed Stamford Cable Reliability Project in Stamford, Connecticut.



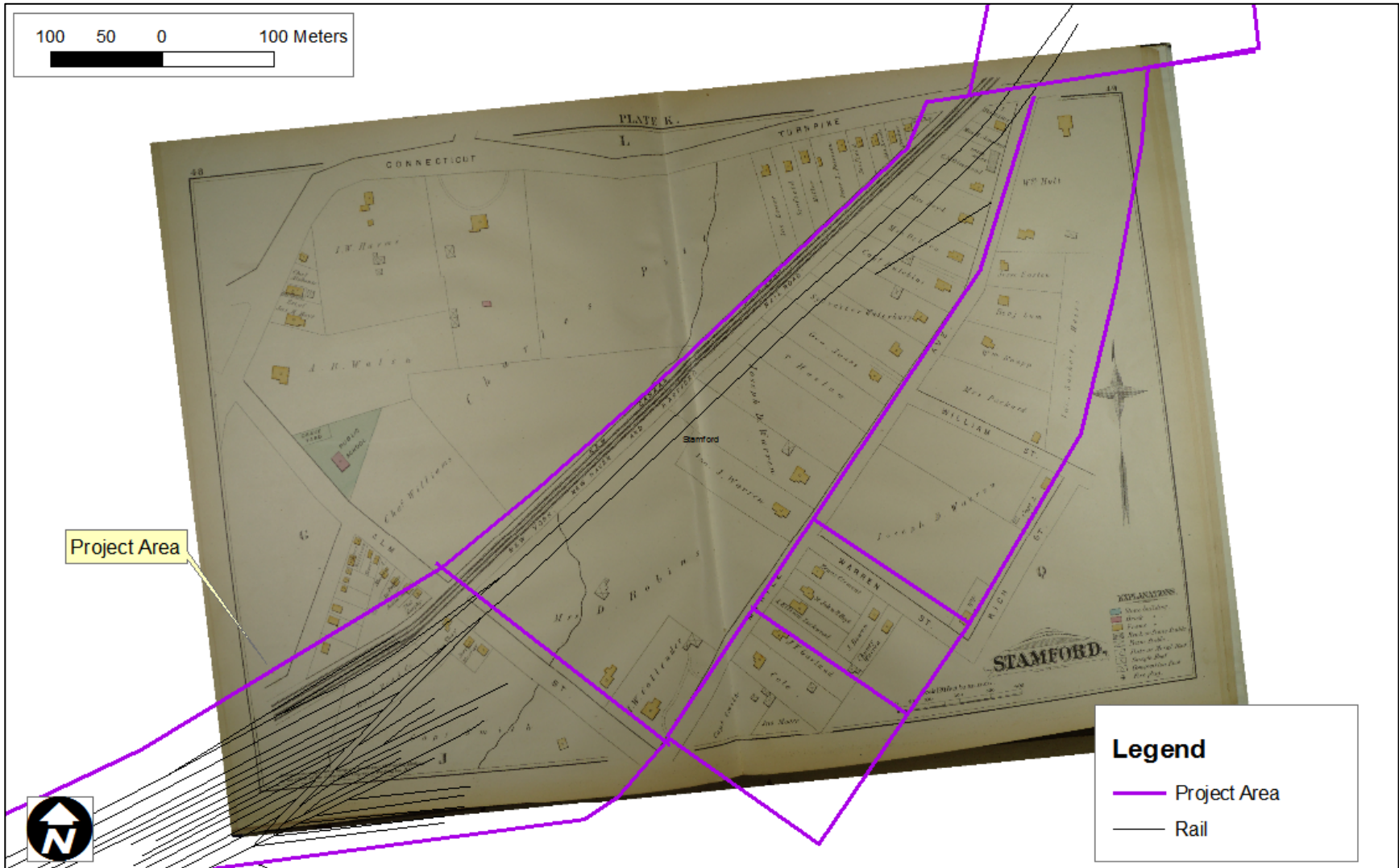


Figure 8. Excerpt from an 1879 Sanborn map depicting the approximate location of a portion of the proposed Stamford Cable Reliability Project in Stamford, Connecticut.

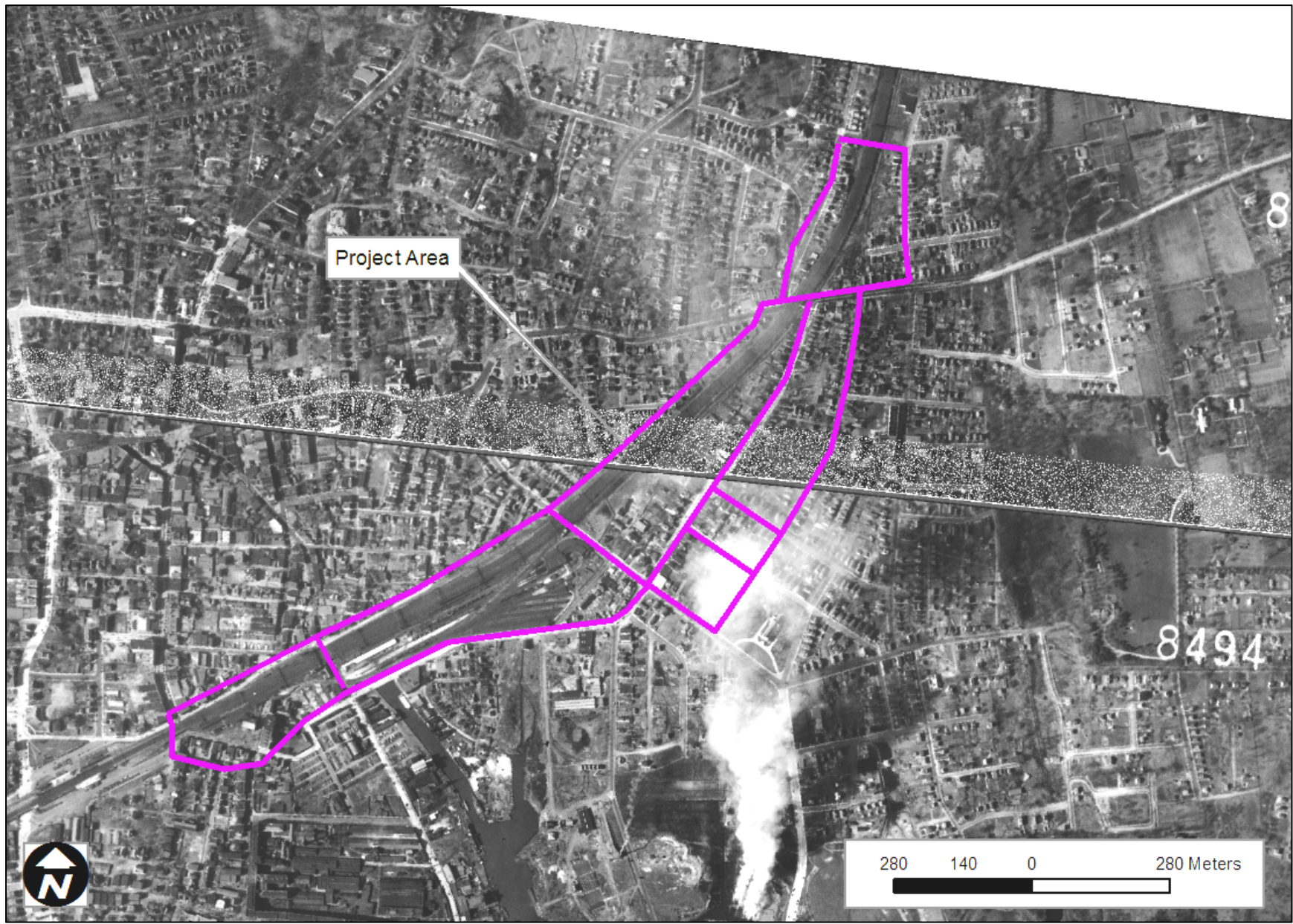


Figure 9. Excerpt from a 1934 aerial photograph depicting the approximate location of the proposed Stamford Cable Reliability Project in Stamford, Connecticut.

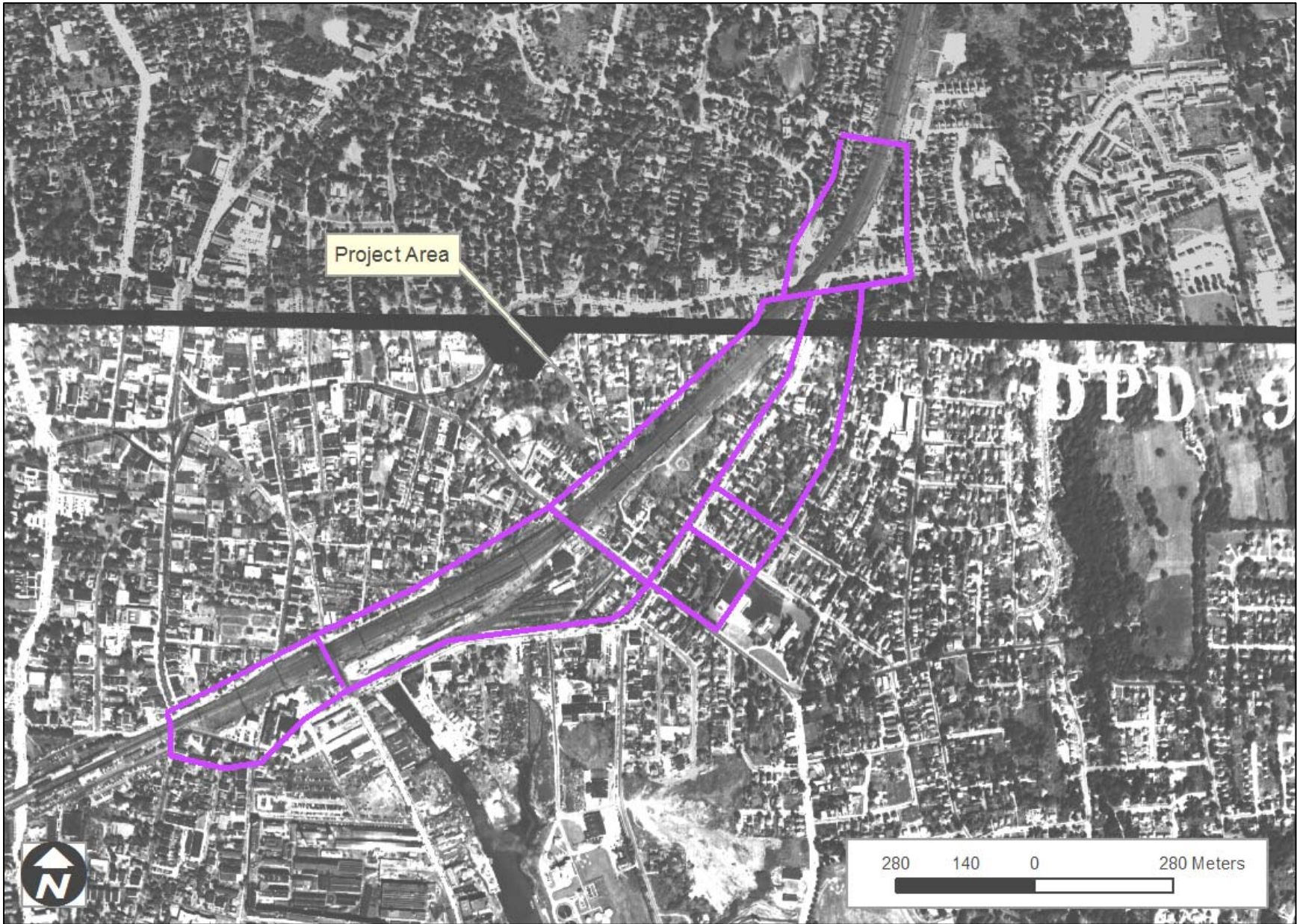


Figure 10. Excerpt from a 1951 aerial photograph depicting the approximate location of the proposed Stamford Cable Reliability Project in Stamford, Connecticut.



Figure 11. Excerpt from a 1965 aerial photograph depicting the approximate location of the proposed Stamford Cable Reliability Project in Stamford, Connecticut.

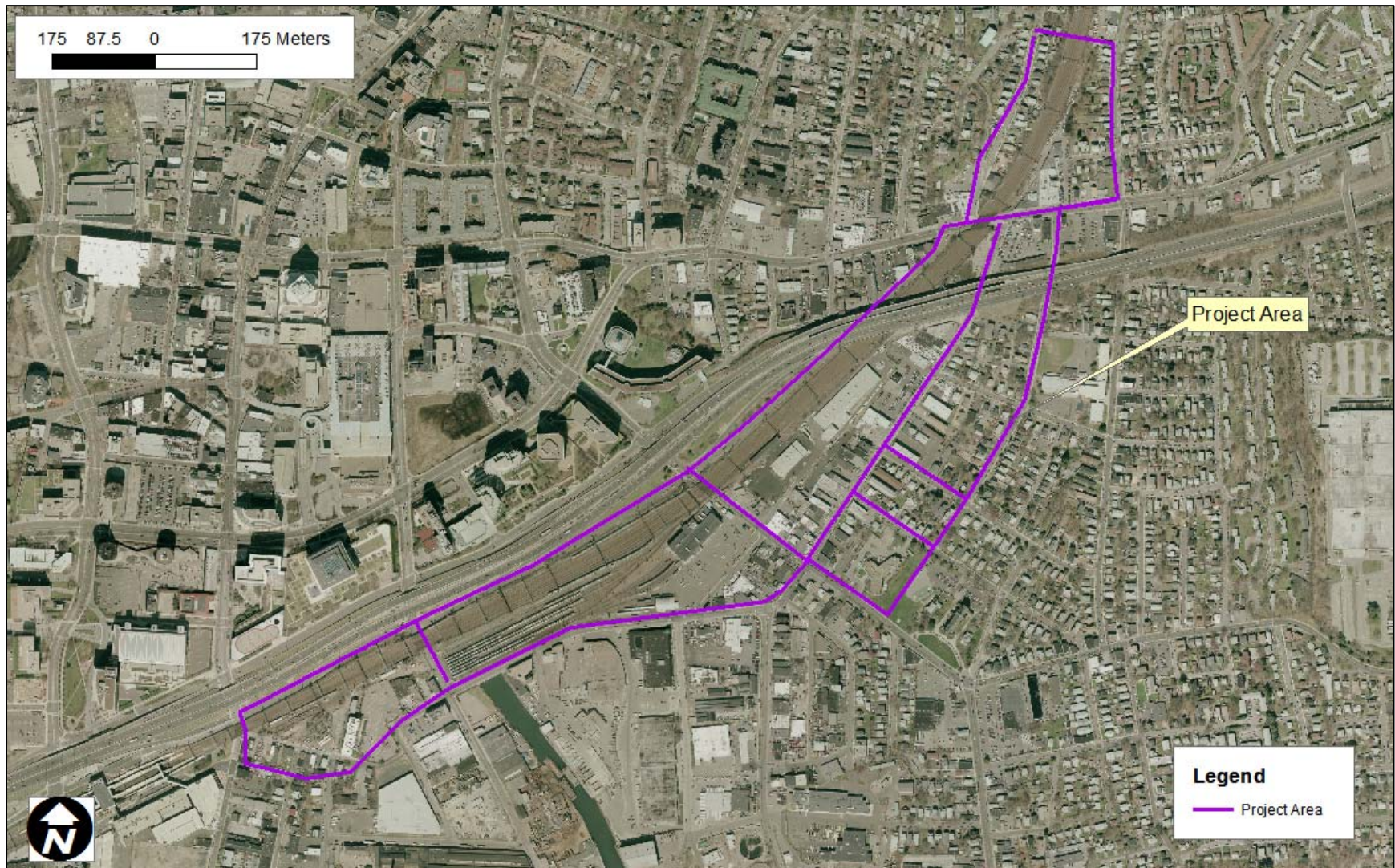


Figure 12. Excerpt from a 2005 aerial photograph depicting the approximate location of the proposed Stamford Cable Reliability Project in Stamford, Connecticut.

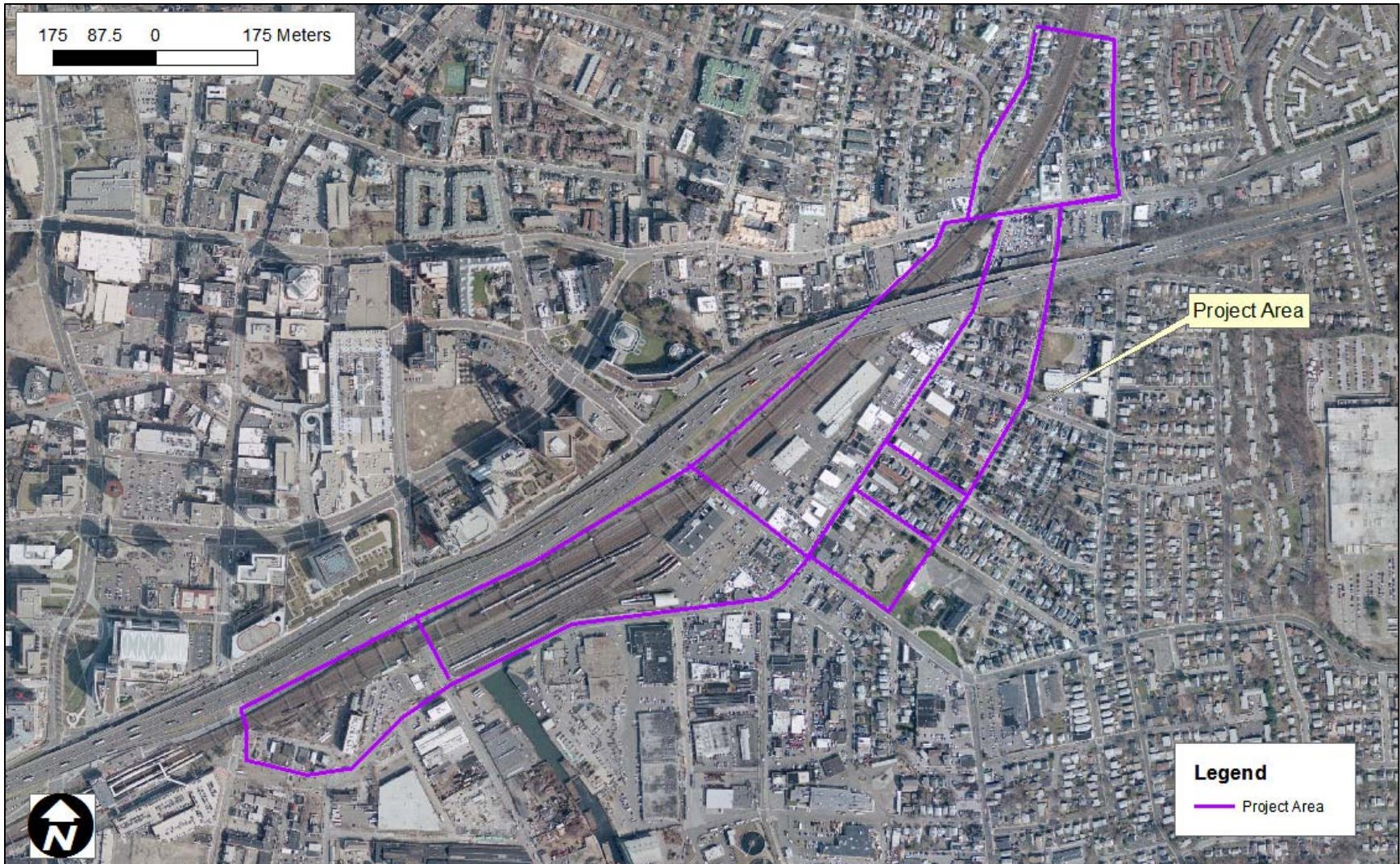


Figure 13. Excerpt from a 2008 aerial photograph depicting the approximate location of the proposed Stamford Cable Reliability Project in Stamford, Connecticut.

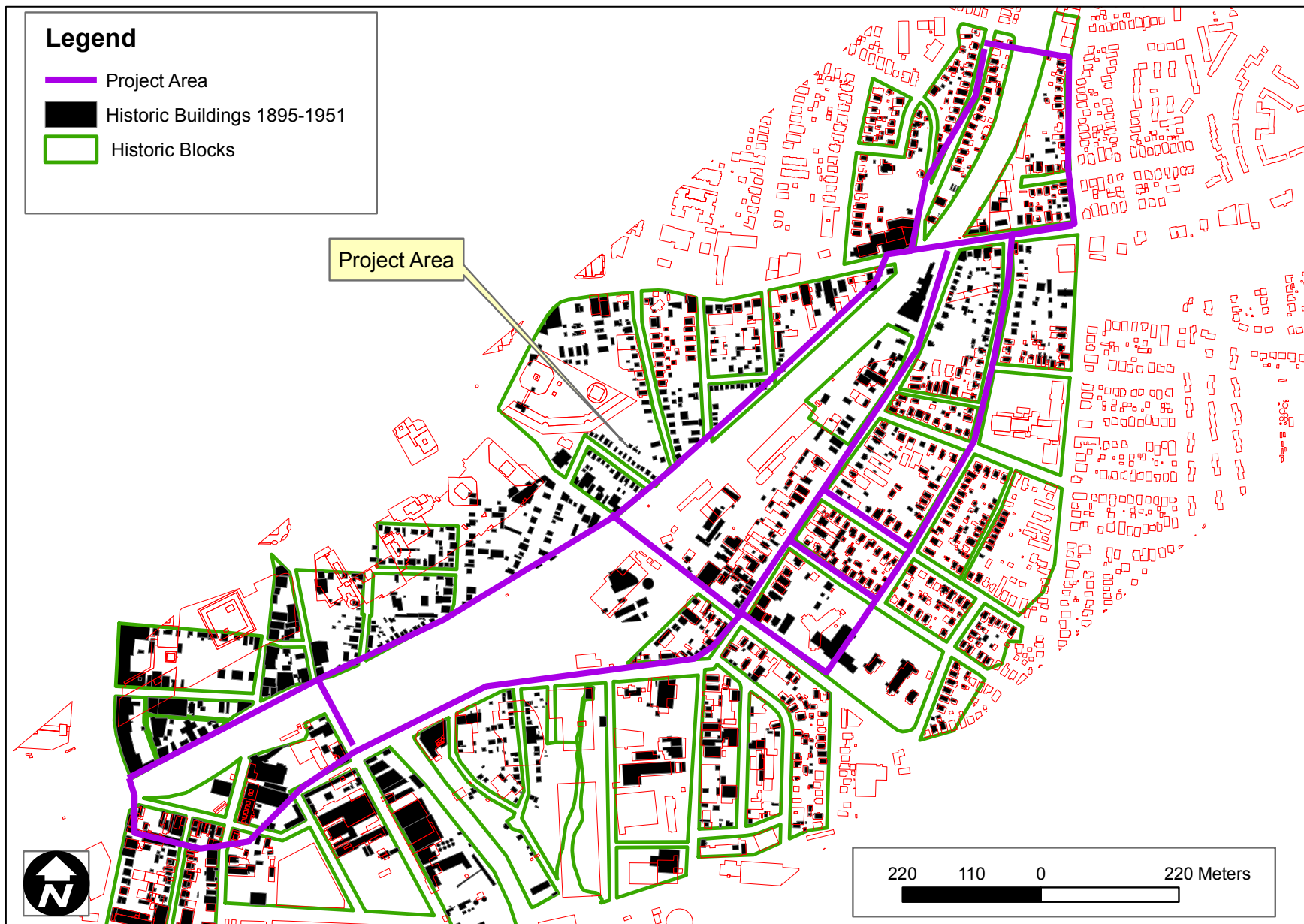


Figure 14. Composite map depicting the building footprints of historic buildings in black and modern buildings in red within the vicinity of the proposed Stamford Cable Reliability Project in Stamford, Connecticut.

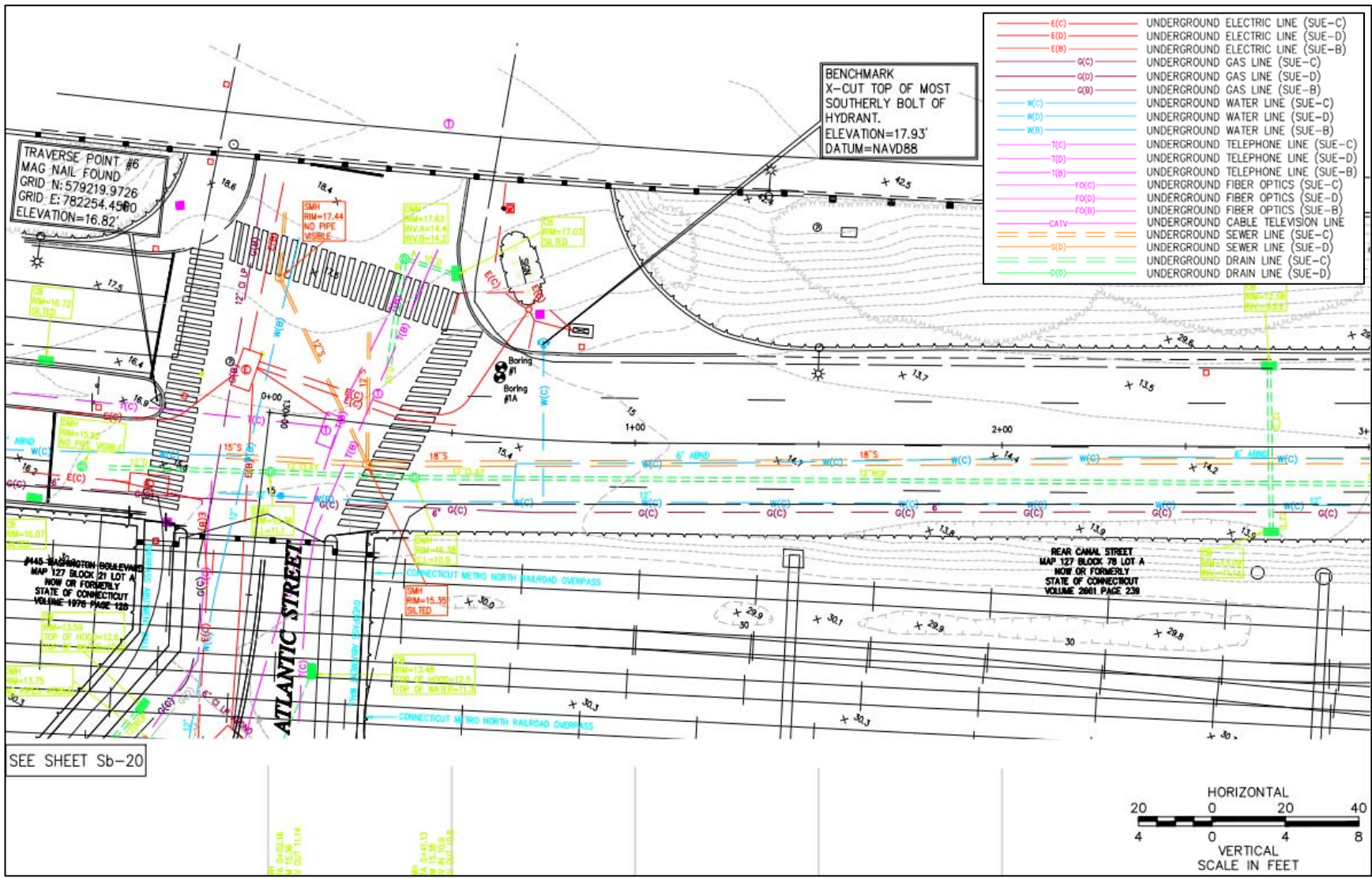


Figure 15. Sample of mapped existing mapped utilities situated within the project corridor associated with the proposed Stamford Cable Reliability Project in Stamford, Connecticut.



## **Appendix B.2**

### **Connecticut Department of Energy and Environmental Protection**

---



Connecticut Department of

**ENERGY &  
ENVIRONMENTAL  
PROTECTION**

March 19, 2012

Amanda Mayhew  
The Connecticut Light And Power Company  
107 Selden St  
Berlin, CT 06037  
amanda.mayhew@nu.com

Project: Stamford Underground Reliability Project, New underground transmission line from South End Substation to Glenbrook Substation, Stamford  
Request No.: 201201589

Dear Amanda Mayhew,

I have reviewed Natural Diversity Data Base maps and files regarding the area delineated on the map you provided for the proposed Stamford Underground Reliability Project, Stamford, Connecticut. I have determined that the proposed activities will not impact any extant populations of Federal or State Endangered, Threatened or Special Concern Species that occur in the vicinity of this property.

Natural Diversity Data Base information includes all information regarding critical biological resources available to us at the time of the request. This information is a compilation of data collected over the years by the Department of Energy and Environmental Protection's Natural History Survey and cooperating units of DEEP, private conservation groups and the scientific community. This information is not necessarily the result of comprehensive or site-specific field investigations. Consultations with the Data Base should not be substitutes for on-site surveys required for environmental assessments. Current research projects and new contributors continue to identify additional populations of species and locations of habitats of concern, as well as, enhance existing data. Such new information is incorporated into the Data Base as it becomes available.

Please contact me if you have further questions at (860) 424-3592, or [dawn.mckay@ct.gov](mailto:dawn.mckay@ct.gov). Thank you for consulting the Natural Diversity Data Base. Also be advised that this is a preliminary review and not a final determination. A more detailed review may be conducted as part of any subsequent environmental permit applications submitted to DEEP for the proposed site.

Sincerely,

A handwritten signature in cursive script that reads "Dawn M. McKay".

Dawn M. McKay  
Environmental Analyst 3



**Northeast  
Utilities System**

107 Selden Street, Berlin, CT 06037

Northeast Utilities Service Company  
P.O. Box 270  
Hartford, CT 06141-0270  
(860) 665-5000

Amanda Mayhew  
Transmission Siting and Permitting  
Tel: (860) 665-6953 - Fax: (860) 665-6933  
Amanda.Mayhew@nu.com

March 7, 2012

Natural Diversity Data Base/Data Request  
Central Permit Processing Unit  
Connecticut Department of Energy and Environmental Protection  
79 Elm Street  
Hartford, CT 06106-5127

**Re: Proposed Underground 115-kV Transmission Line from South End Substation to  
Glenbrook Substation in Stamford, CT**

The Connecticut Light and Power Company (CL&P) is proposing to install a 115-kilovolt ("kV") underground transmission line in the streets of Stamford, Connecticut. The work will involve placement of underground transmission cables under existing streets. The total length is approximately 1.5 miles using the proposed route (see attached map).

CL&P has reviewed the Natural Diversity Data Base's (NDDB) December 2011 GIS layer of "State and Federal Listed Species and Natural Communities on CL&P Right-of-Ways" and found one mapped area within a quarter-mile of the proposed project. The attached maps show the Project area and the most recent NDDB layer on 7.5 minute series USGS quadrangles and an annotated aerial map. Additionally, I have attached a completed NDDB Review Request Form.

On behalf of CL&P, I am requesting a CT Department of Energy and Environmental Protection review of the above referenced CL&P property for the presence of any state or federally listed Endangered, Threatened, or Special Concern species. Should you have any questions, I may be reached at (860) 665-6953 or via e-mail at amanda.mayhew@nu.com. Thank you for your attention to this matter.

Sincerely,

Amanda Mayhew  
Environmental Scientist

Attachments



Connecticut Department of  
 Energy & Environmental Protection  
 Bureau of Natural Resources  
 Wildlife Division

CPPU USE ONLY

App #: \_\_\_\_\_

Doc #: \_\_\_\_\_

Check #: **No fee required**

Program: Natural Diversity Database  
 Endangered Species

Hardcopy \_\_\_\_\_ Electronic \_\_\_\_\_

## Request for Natural Diversity Data Base (NDDDB) State Listed Species Review

Please complete this form in accordance with the instructions (DEP-INST-007) to ensure proper handling of your request.  
**There are no fees associated with NDDDB Reviews.**

### Part I: Preliminary Screening

Before submitting this request, you must review the Natural Diversity Data Base "State and Federal Listed Species and Significant Natural Communities Maps" found on the [DEEP website](#). Follow the instructions on the map or in this form's instruction document. These maps are updated twice a year, usually in June and December.

Does your site, including all affected areas, meet the screening criteria according to the instructions:

Yes     No

Enter the date of the map reviewed for pre-screening: **December 2011**

### Part II: Requester Information

*\*If the requester is a corporation, limited liability company, limited partnership, limited liability partnership, or a statutory trust, it must be registered with the Secretary of State. If applicable, the company name shall be stated **exactly** as it is registered with the Secretary of State. This information can be accessed at [CONCORD](#).*

*If the requester is an individual, provide the legal name (include suffix) in the following format: First Name; Middle Initial; Last Name; Suffix (Jr, Sr., II, III, etc.).*

1. Requester Company Name\*: **The Connecticut Light and Power Company**

Name: **Amanda Mayhew**

Address: **107 Selden St**

City/Town: **Berlin**

State: **CT**

Zip Code: **06037**

Business Phone: **860.665.6953**

ext.

Fax: **860.655.6933**

E-mail: **amanda.mayhew@nu.com**

By providing this email address you are agreeing to receive official correspondence from the department, at this electronic address, concerning this request. Please remember to check your security settings to be sure you can receive emails from "ct.gov" addresses. Also, please notify the department if your e-mail address changes.

Requester can best be described as:

Business Entity     Federal Agency     Municipal govt.     State agency     Individual  
 Tribe     Other (specify):

Acting as (Affiliation), pick one:

Property owner     Consultant     Engineer     Facility owner     Applicant  
 Biologist     Pesticide Applicator     Other representative:

## Part II. Requester Information (continued)

### 2. List Primary Contact to receive Natural Diversity Data Base correspondence and inquiries, if different from requester.

Company:

Contact Person:

Title:

Mailing Address:

City/Town:

State:

Zip Code:

Business Phone:

ext.

Fax:

E-mail:

By providing this email address you are agreeing to receive official correspondence from the department, at this electronic address, concerning this request. Please remember to check your security settings to be sure you can receive emails from "ct.gov" addresses. Also, please notify the department if your e-mail address changes.

## Part III: Site Information

This request can only be completed for one site. A separate request must be filed for each additional site.

### 1. SITE NAME AND LOCATION

Site Name or Project Name: **Stamford Underground Reliability Project**

Town(s): **Stamford**

Street Address or Location Description:

New underground transmission line from South End Substation located on Manhattan St to Glenbrook Substation on Lincoln Ave.

Size in acres, or site dimensions: **Approximately 1.5 miles<sup>2</sup>**

Latitude and longitude of the center of the site in decimal degrees (e.g., 41.23456 -71.68574):

Latitude: **41.05024**

Longitude: **-73.53563**

Method of coordinate determination (check one):

GPS     Photo interpolation using [CTECO map viewer](#)     Other (specify):

#### 2a. Describe the current land use and land cover of the site.

The proposed project will be placed entirely under currently paved roads and end at two existing substations.

#### b. Check all that apply and enter the size in acres or % of area in the space after each checked category.

- |   |   |   |
|---|---|---|
| <input type="checkbox"/> Industrial/Commercial _____                        | <input type="checkbox"/> Residential _____          | <input type="checkbox"/> Forest _____       |
| <input type="checkbox"/> Wetland _____                                      | <input type="checkbox"/> Field/grassland _____      | <input type="checkbox"/> Agricultural _____ |
| <input type="checkbox"/> Water _____  | <input type="checkbox"/> Utility Right-of-way _____ |   |
| <input checked="" type="checkbox"/> Transportation Right-of-way <u>100%</u> | <input type="checkbox"/> Other (specify): _____     |   |

## Part IV: Project Information

### 1. PROJECT TYPE:

Choose Project Type: Utility construction/modification , If other describe: \_\_\_\_\_

2. Is the subject activity limited to the maintenance, repair, or improvement of an existing structure within the existing footprint?     Yes     No    If yes, explain.

3. Give a detailed description of the activity which is the subject of this request and describe the methods and equipment that will be used.

CL&P is proposing to install a new 115-kV transmission circuit underground in existing road way through the city of Stamford. The installation of the circuit may require that a portion of existing road way be closed to excavate a trench to install the conduit and associated circuits.

4. Provide a contact for questions about the project details if different from Part II primary contact.

Name:

Phone:

E-mail:

## Part V: Request Type and Associated Application Type

Check *one* box from either Group 1 or Group 2, indicating the appropriate category for this request.

**Group 1.** If you check one of these boxes, fill out Parts I – VII of this form and submit the required attachments A and B.

- Preliminary screening was negative but an NDDB review is still requested
- Request regards a municipally regulated or unregulated activity (no state permit/certificate needed)
- Request regards a preliminary site assessment or project feasibility study
- Request relates to land acquisition or protection
- Request is associated with a *renewal* of an existing permit, with no modifications

**Group 2.** If you check one of these boxes, fill out Parts I – VII of this form and submit required attachments A, B, and C.

- Request is associated with a *new* state or federal permit application
- Request is associated with modification of an existing permit
- Request is associated with a permit enforcement action
- Request regards site management or planning, requiring detailed species recommendations
- Request regards a state funded project, state agency activity, or CEPA request

If you are filing this request as part of a state or federal permit application enter the application information below.

Permitting Agency and Application Name:

**The Connecticut Siting Council- Application for Public Need and Environmental Compatibility**

State DEEP Application Number, if known: \_\_\_\_\_

State DEEP Enforcement Action Number, if known: \_\_\_\_\_

State DEEP Permit Analyst/Engineer, if known: \_\_\_\_\_

Is this request related to a previously submitted NDDB request?  Yes  No

Enter the previous NDDB Request Number(s), if known: \_\_\_\_\_

# Attachment C: Supplemental Information, Group 2 requirement

## Section i: Supplemental Site Information

### 1. Existing Conditions

Describe all natural and man-made features including wetlands, watercourses, fish and wildlife habitat, floodplains and any existing structures potentially affected by the subject activity. Such features should be depicted and labeled on the site plan that must be submitted. Photographs of current site conditions may be helpful to reviewers.

The project will be placed underground in existing transportation rights-of-way.

- Site Photographs (optional) attached
- Site Plan/sketch of existing conditions attached

### 2. Biological Surveys

Has a biologist visited the site and conducted a biological survey to determine the presence of any endangered, threatened or special concern species  Yes  No

If yes, complete the following questions and submit any reports of biological surveys, documentation of the biologist's qualifications, and any NDDB survey forms.

Biologist(s) name:

Habitat and/or species targeted by survey:

Dates when surveys were conducted:

- Reports of biological surveys attached
- Documentation of biologist's qualifications attached
- [NDDB Survey forms](#) for any listed species observations attached

## Section ii: Supplemental Project Information

1. Provide a schedule for all phases of the project including the year, the month and/or season that the proposed activity will be initiated and the duration of the activity.

The proposed schedule for this project is to start construction in the fourth quarter of 2013 and be completed in 2014.

2. Describe and quantify the proposed changes to existing conditions and describe any on-site or off-site impacts. In addition, provide an annotated site plan detailing the areas of impact and proposed changes to existing conditions.

See attached map for proposed and alternative locations.

- Annotated Site Plan attached



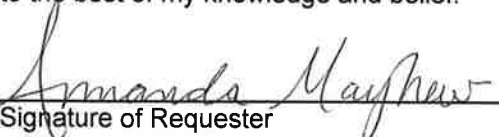
## Part VI: Supporting Documents

Check each attachment submitted as verification that *all* applicable attachments have been supplied with this request form. Label each attachment as indicated in this part (e.g., Attachment A, etc.) and be sure to include the requester's name, site name and the date. **Please note that Attachments A and B are required for all requesters.** Attachment C (DEP-APP-007C) is supplied at the end of this form.

<input checked="" type="checkbox"/> Attachment A:	<b>Overview Map:</b> an 8 1/2" X 11" print/copy of the relevant portion of a USGS Topographic Quadrangle Map clearly indicating the exact location of the site.
<input checked="" type="checkbox"/> Attachment B:	<b>Detailed Site Map:</b> fine scaled map showing site boundary details on aerial imagery with relevant landmarks labeled. (Site boundaries in GIS [ESRI ArcView shapefile, in NAD83, State Plane, feet] format can be substituted for detailed maps, see instruction document)
<input checked="" type="checkbox"/> Attachment C:	<b>Supplemental Information, Group 2 requirement (attached, DEP-APP-007C)</b> <input checked="" type="checkbox"/> Section i: Supplemental Site Information and supporting documents <input checked="" type="checkbox"/> Section ii: Supplemental Project Information and supporting documents

## Part VII: Requester Certification

The requester *and* the individual(s) responsible for actually preparing the request must sign this part. A request will be considered incomplete unless all required signatures are provided.

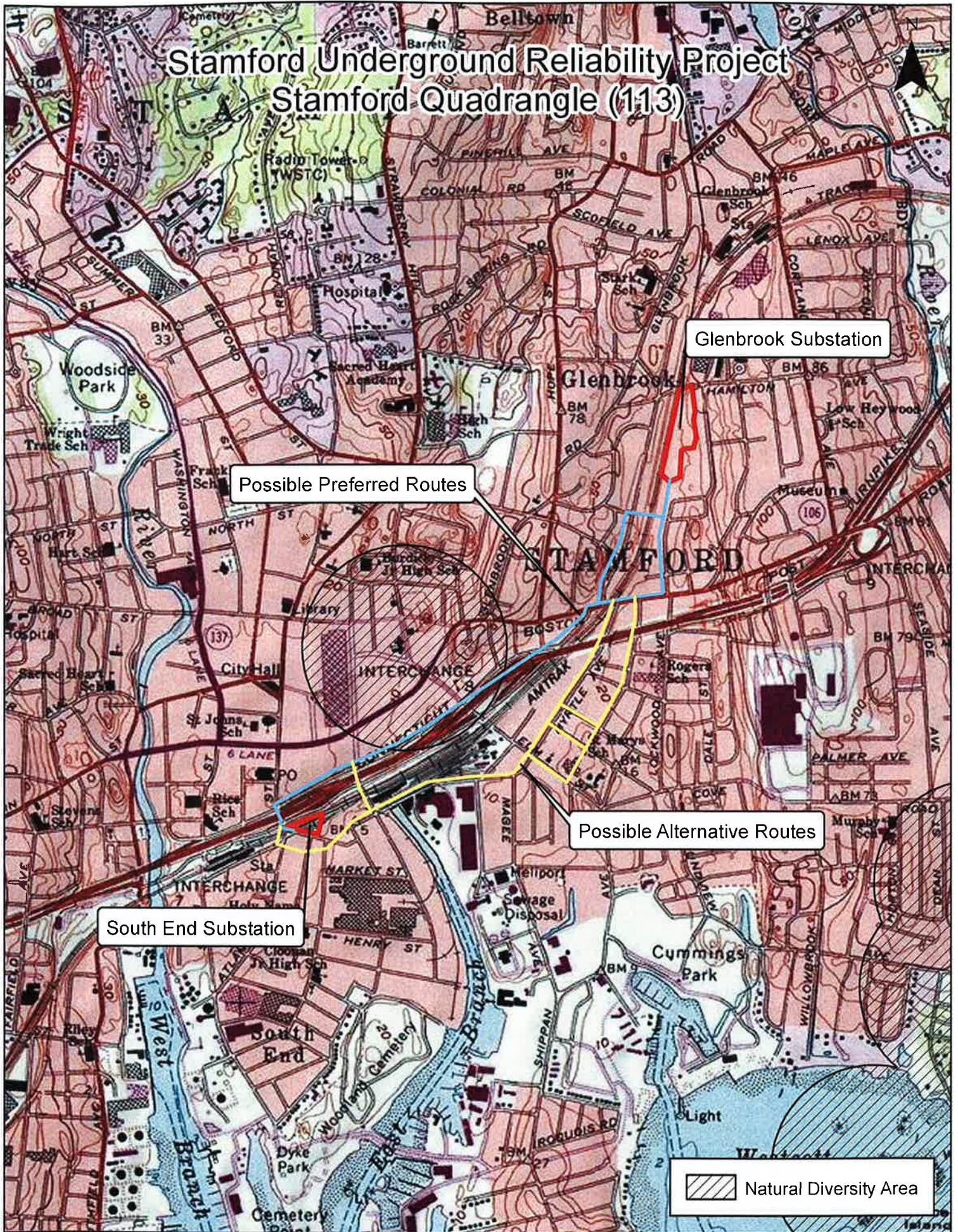
<p>"I have personally examined and am familiar with the information submitted in this document and all attachments thereto, and I certify that based on reasonable investigation, including my inquiry of the individuals responsible for obtaining the information, the submitted information is true, accurate and complete to the best of my knowledge and belief."</p>	
 Signature of Requester	3/7/12 Date
Amanda Mayhew Name of Requester (print or type)	Environmental Scientist Title (if applicable)
Signature of Preparer (if different than above)	Date
Name of Preparer (print or type)	Title (if applicable)

Note: Please submit the completed Request Form and all Supporting Documents to:

CENTRAL PERMIT PROCESSING UNIT  
 DEPARTMENT OF ENERGY & ENVIRONMENTAL PROTECTION  
 79 ELM STREET  
 HARTFORD, CT 06106-5127

Or email request to: [dep.nddbrequest@ct.gov](mailto:dep.nddbrequest@ct.gov)

# Stamford Underground Reliability Project Stamford Quadrangle (113)




Glenbrook Substation

Possible Preferred Routes

Possible Alternative Routes

South End Substation

 Natural Diversity Area


# Stamford Underground Reliability Project

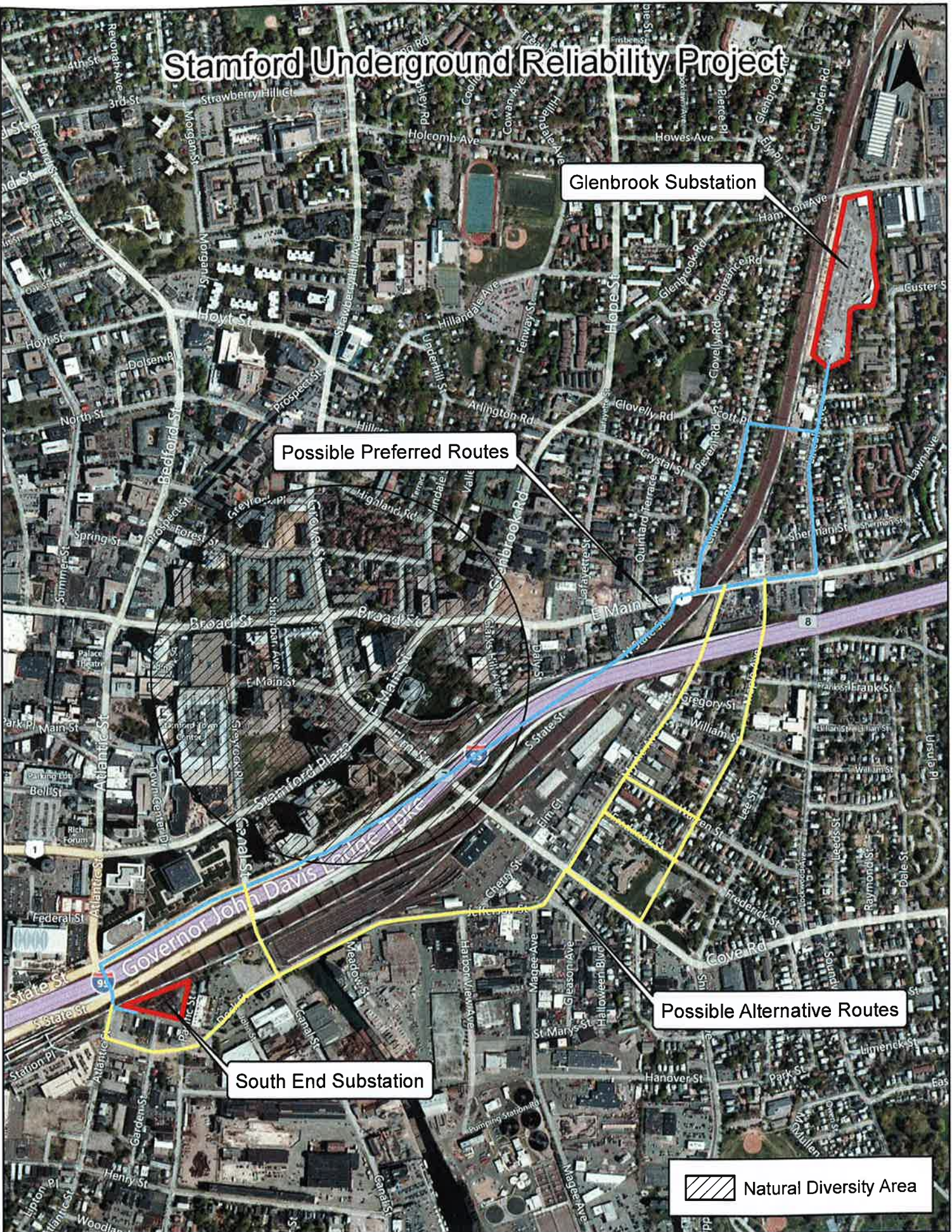
Glenbrook Substation

Possible Preferred Routes

Possible Alternative Routes

South End Substation

 Natural Diversity Area



## **Appendix B.3**

**United States Fish and Wildlife Service**

---



# United States Department of the Interior



## FISH AND WILDLIFE SERVICE

New England Field Office  
70 Commercial Street, Suite 300  
Concord, NH 03301-5087  
<http://www.fws.gov/newengland>

January 17, 2012

To Whom It May Concern:

This project was reviewed for the presence of federally listed or proposed, threatened or endangered species or critical habitat per instructions provided on the U.S. Fish and Wildlife Service's New England Field Office website:

<http://www.fws.gov/newengland/EndangeredSpec-Consultation.htm>

Based on information currently available to us, no federally listed or proposed, threatened or endangered species or critical habitat under the jurisdiction of the U.S. Fish and Wildlife Service are known to occur in the project area(s). Preparation of a Biological Assessment or further consultation with us under section 7 of the Endangered Species Act is not required. No further Endangered Species Act coordination is necessary for a period of one year from the date of this letter, unless additional information on listed or proposed species becomes available.

Thank you for your cooperation. Please contact Mr. Anthony Tur of this office at 603-223-2541 if we can be of further assistance.

Sincerely yours,

Thomas R. Chapman  
Supervisor  
New England Field Office

**FEDERALLY LISTED ENDANGERED AND THREATENED SPECIES  
IN CONNECTICUT**

COUNTY	SPECIES	FEDERAL STATUS	GENERAL LOCATION/HABITAT	TOWNS
Fairfield	Piping Plover	Threatened	Coastal Beaches	Westport, Bridgeport and Stratford
	Roseate Tern	Endangered	Coastal beaches, Islands and the Atlantic Ocean	Westport and Stratford
	Bog Turtle	Threatened	Wetlands	Ridgefield and Danbury.
Hartford	Dwarf wedgemussel	Endangered	Farmington and Podunk Rivers	South Windsor, East Granby, Simsbury, Avon and Bloomfield.
Litchfield	Small whorled Pogonia	Threatened	Forests with somewhat poorly drained soils and/or a seasonally high water table	Sharon.
	Bog Turtle	Threatened	Wetlands	Sharon and Salisbury.
Middlesex	Roseate Tern	Endangered	Coastal beaches, islands and the Atlantic Ocean	Westbrook
	Piping Plover	Threatened	Coastal Beaches	Clinton, Westbrook, Old Saybrook.
	Puritan Tiger Beetle	Threatened	Sandy beaches along the Connecticut River	Cromwell, Portland
New Haven	Bog Turtle	Threatened	Wetlands	Southbury
	Piping Plover	Threatened	Coastal Beaches	Milford, Madison and West Haven
	Roseate Tern	Endangered	Coastal beaches, Islands and the Atlantic Ocean	Branford, Guilford and Madison
	Indiana Bat	Endangered	Mines, Caves	
New London	Piping Plover	Threatened	Coastal Beaches	Old Lyme, Waterford, Groton and Stonington.
	Roseate Tern	Endangered	Coastal beaches, Islands and the Atlantic Ocean	East Lyme, New London and Waterford.
	Small whorled Pogonia	Threatened	Forests with somewhat poorly drained soils and/or a seasonally high water table	Waterford
Tolland	None			

- Eastern cougar, gray wolf, Indiana bat, Seabeach amaranth and American burying beetle are considered extirpated in Connecticut.
- There is no federally-designated Critical Habitat in Connecticut.

7/31/2008