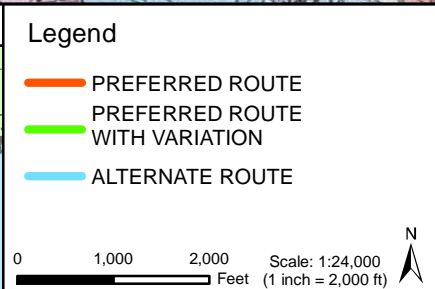
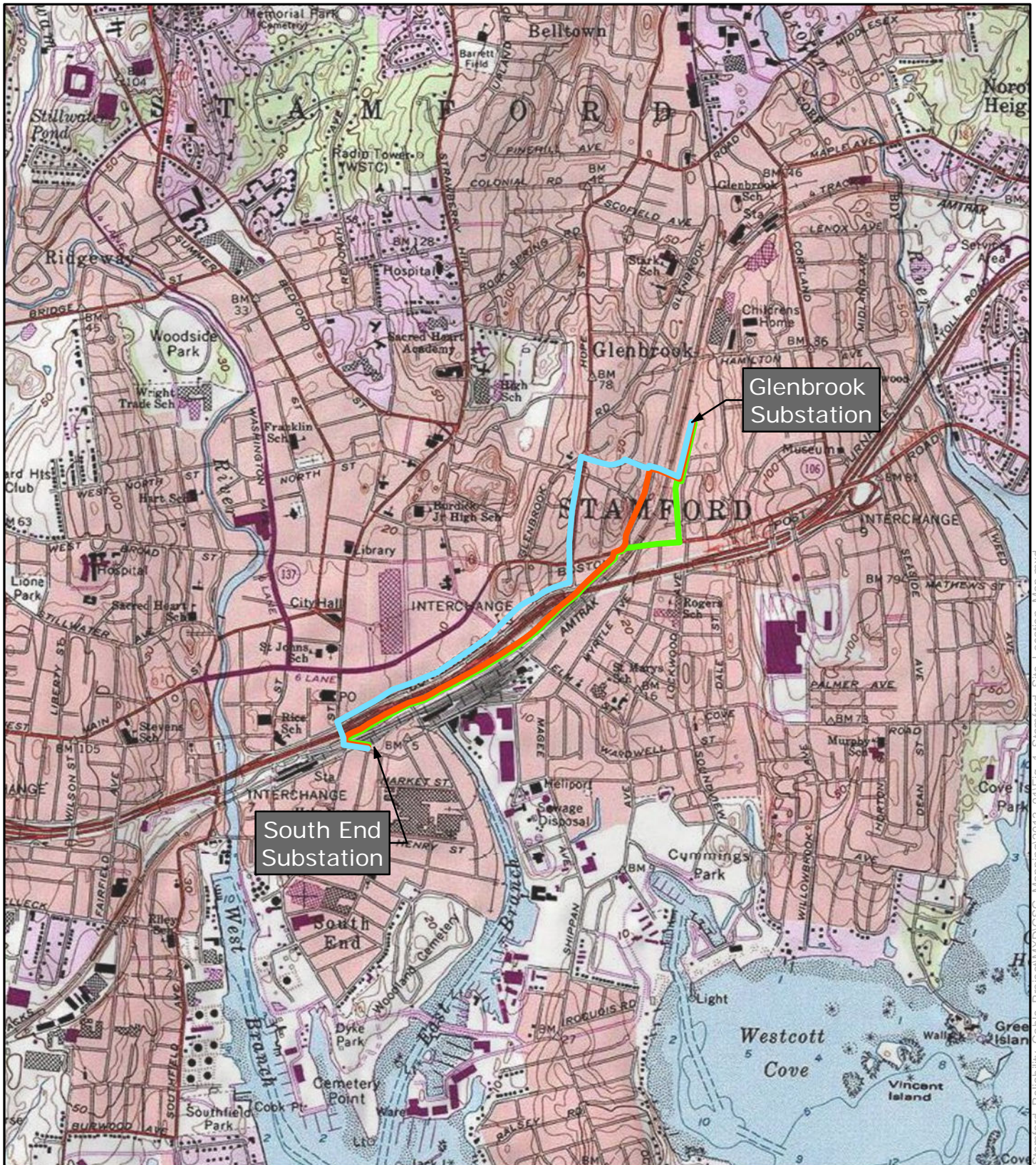


**Appendix A**  
**Project Mapping**

---



**Stamford Reliability Cable Project**  
**Stamford, CT**

Site Location

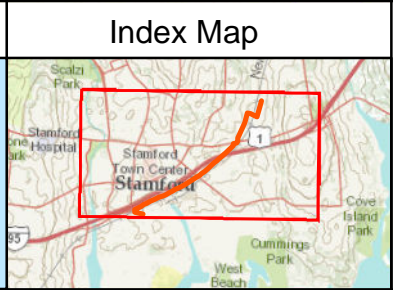
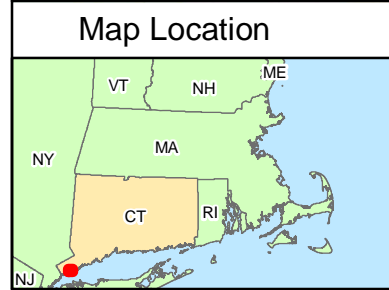
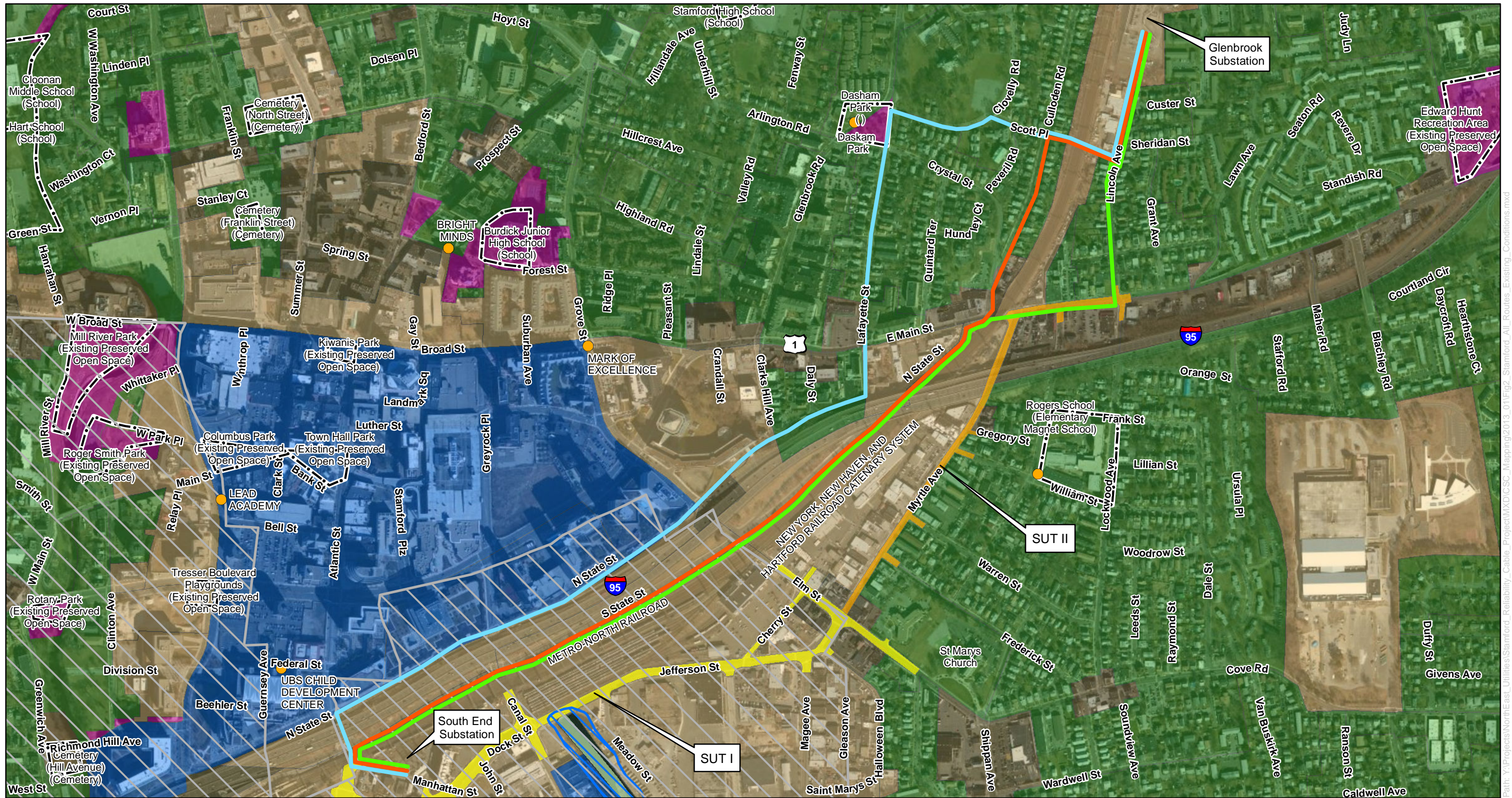
**Connecticut Light & Power**  
 A Northeast Utilities Company

**Figure 1**

January 10 2013

Map Projection: State Plane CT, NAD83, US Feet.  
 Image Source: ESRI ArcGIS Online Imagery Server.

Path: Y:\Projects\NorthEast\_Uilities\Stamford\_Reliability\_Cable\_Project\MXD\CSC\_Mapping\2013\_01\Fig\_1\_Stamford\_Site\_Location\_Map.mxd



**Legend**

- PREFERRED ROUTE
- PREFERRED ROUTE WITH VARIATION
- ALTERNATE ROUTE
- Daycare Facility

**Stamford Urban Transitway (SUT) Road Improvements**

- SUT Phase I (Construction Complete)
- SUT Phase II (Construction to Commence Fall 2012)
- Municipal/Private Park or Open Space

**Zoning Type**

- Business
- Industrial
- Park
- Redevelopment Area
- Residential

**Other Features:**

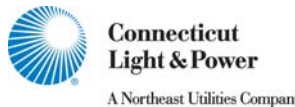
- Coastal Boundary
- 100-Year Floodzone
- Area Subject to Jurisdiction of the CT Tidal Wetlands Act

Scale: 0 600 1,200 Feet  
 1:7,200 1" = 600'

Data Source: ESRI Bing Imagery  
 AECOM Survey: May 2012

**Stamford Reliability Cable Project**  
**115-kV Route Options**  
**Glenbrook to South End Substation**  
**Survey Aerial Map**

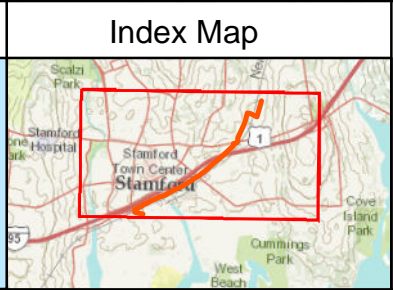
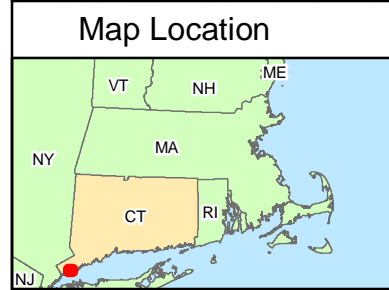
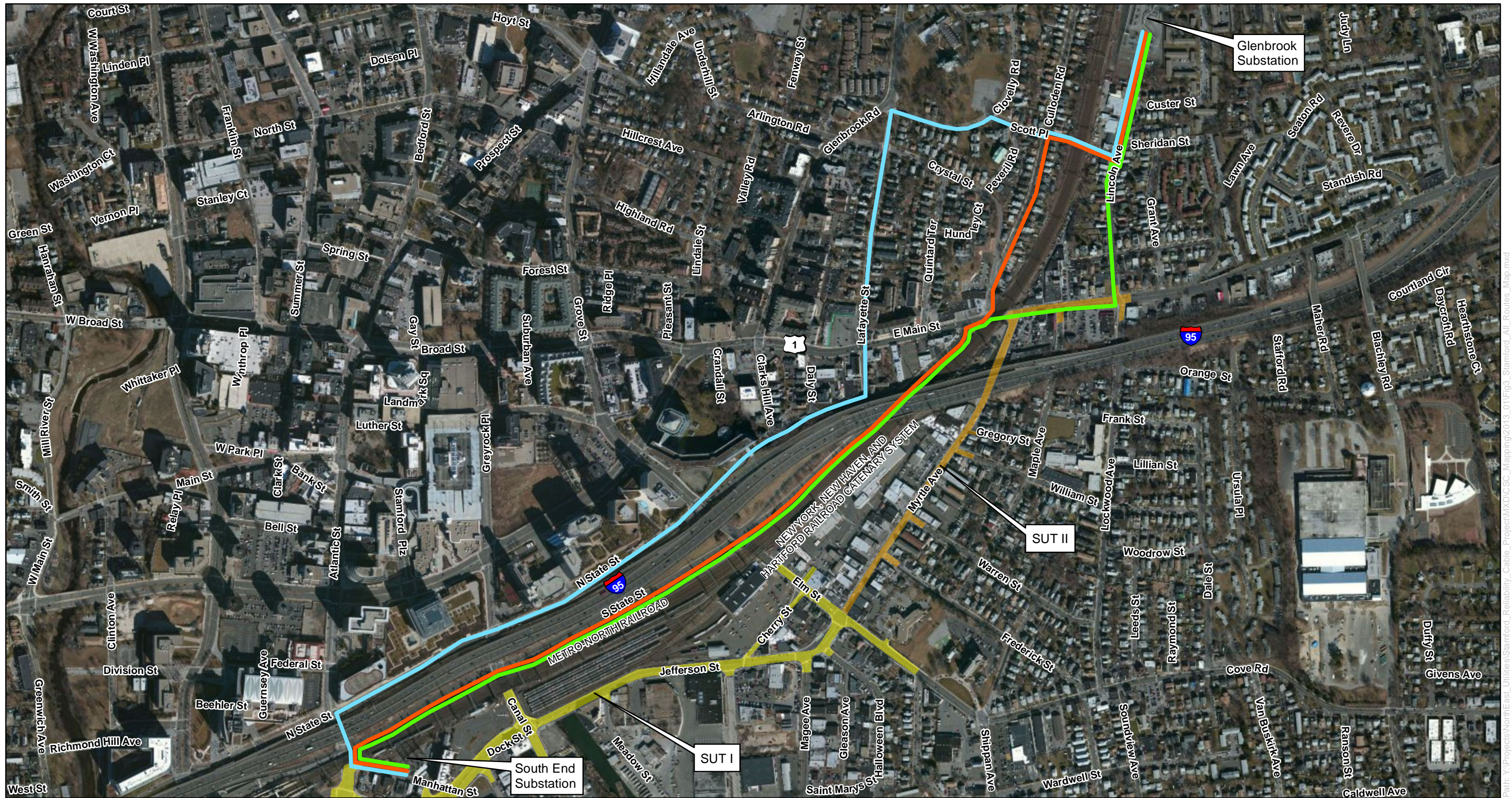
**ALL ROUTES MAP**  
**EXISTING CONDITIONS**



**AECOM**

Figure 2  
 Date: January 10 2013

Path: Y:\Projects\NorthEast\Utilities\Stamford\_Reliability\_Cable\Project\Map\CS\_C\_Mapping\2013\_01\Fig2\_Stamford\_All\_Routes\_Existing\_Conditions.mxd



**Legend**

- PREFERRED ROUTE (Orange line)
- PREFERRED ROUTE WITH VARIATION (Green line)
- ALTERNATE ROUTE (Blue line)

**Stamford Urban Transitway (SUT) Road Improvements**

- SUT Phase I (Construction Complete) (Yellow background)
- SUT Phase II (Construction to Commence Q1 2013) (Orange background)

0 600 1,200 Feet

1:7,200 1" = 600'

Data Source: ESRI Bing Imagery  
AECOM Survey: May 2012

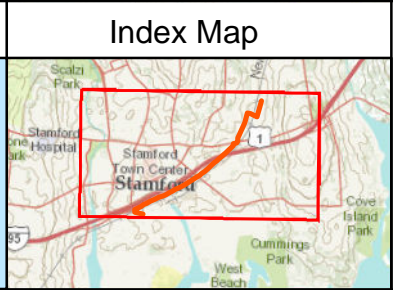
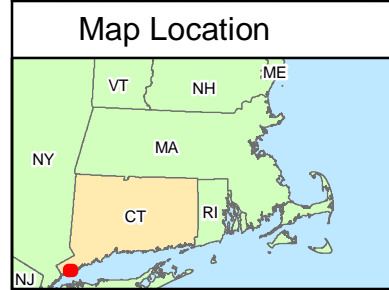
Stamford Reliability Cable Project  
115-kV Route Options  
Glenbrook to South End Substation  
Survey Aerial Map  
**ALL ROUTES MAP**

Connecticut Light & Power  
A Northeast Utilities Company

**AECOM**

Figure 3  
Date: January 10 2013

Path: Y:\Projects\NorthEast\Utilities\Stamford\_Reliability\_Cable\Project\Map\CS\_C\Maping\2013\_01\Figs\_Stamford\_All\_Routes\_Map.mxd



**Legend**

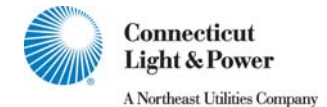
- PREFERRED ROUTE
- 1 SEGMENT NO.
- SUT Phase I (Construction Complete)
- SUT Phase II (Construction to Commence Q1 2013)

0 600 1,200 Feet


1:7,200 1" = 600'

Data Source: ESRI Bing Imagery  
AECOM Survey: May 2012

Stamford Reliability Cable Project  
115-kV Route Options  
Glenbrook to South End Substation  
Survey Aerial Map  
**PREFERRED ROUTE**



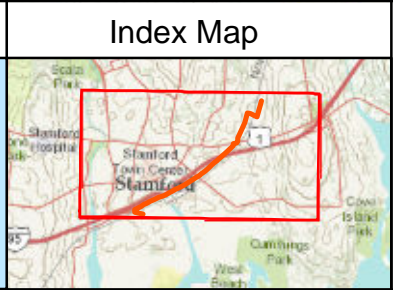
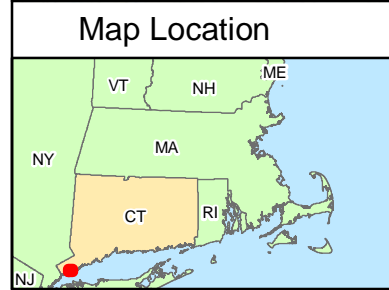
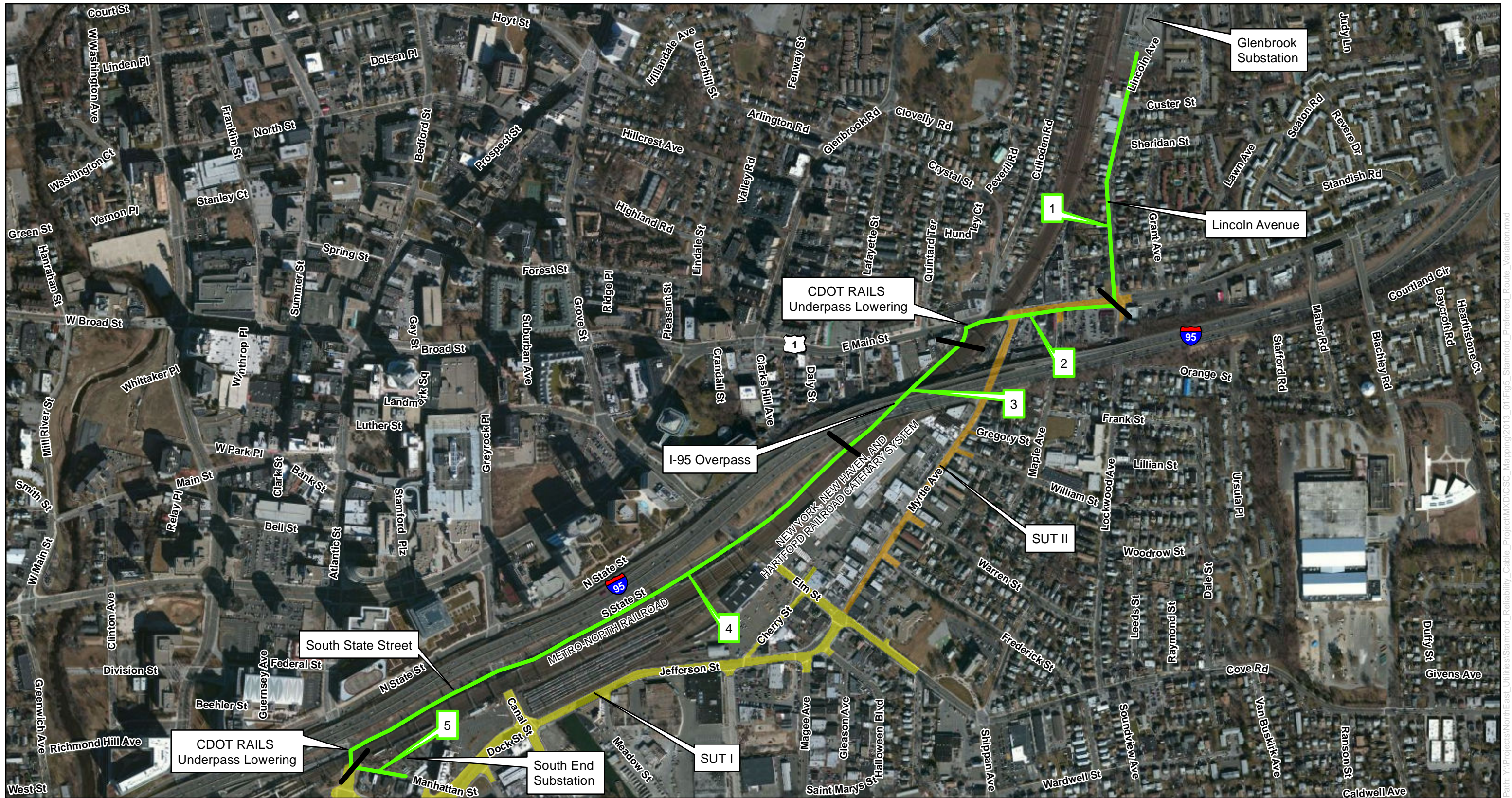
Connecticut Light & Power  
A Northeast Utilities Company



**AECOM**

Figure 4  
Date: January 10 2013

Path: Y:\Projects\NorthEast\Utilities\Stamford\_Reliability\_Cable\Project\MD\CSC\_Mapping\2013\_01\Fig4\_Stamford\_PREFERRED\_Route.mxd



**Legend**

- PREFERRED ROUTE WITH VARIATION
- 1 SEGMENT NO.

**Stamford Urban Transitway (SUT) Road Improvements**

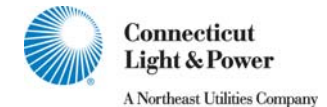
- SUT Phase I (Construction Complete)
- SUT Phase II (Construction to Commence Q1 2013)

0 600 1,200 Feet


1:7,200 1" = 600'

Data Source: ESRI Bing Imagery  
AECOM Survey: May 2012

Stamford Reliability Cable Project  
115-kV Route Options  
Glenbrook to South End Substation  
Survey Aerial Map  
**PREFERRED ROUTE WITH VARIATION**



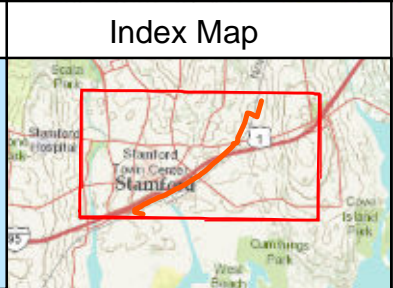
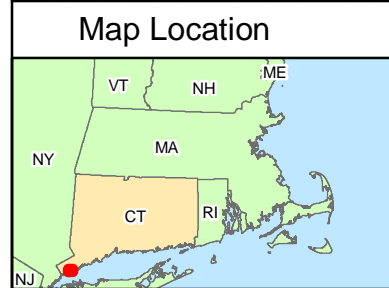
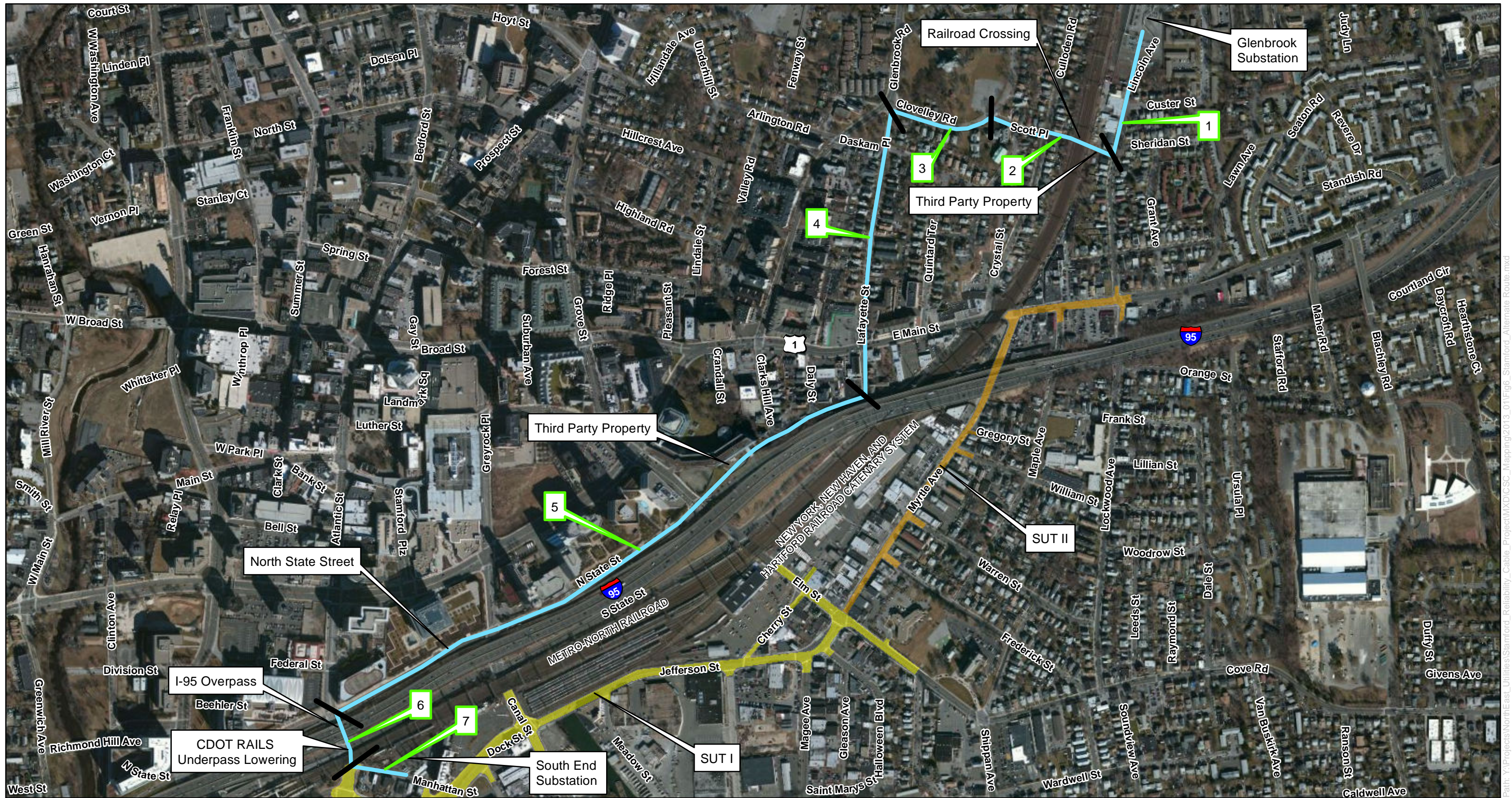
Connecticut Light & Power  
A Northeast Utilities Company



**AECOM**

Figure 5  
Date: January 16 2013

Path: Y:\Projects\NorthEast\Utilities\Stamford\_Reliability\_Cable\Project\KID\CSC\_Mapping\2013\_01\Figs\_Stamford\_Prefered\_Route\_Variation.mxd



**Legend**

ALTERNATE ROUTE

SEGMENT NO.

**Stamford Urban Transitway (SUT) Road Improvements**

- SUT Phase I (Construction Complete)
- SUT Phase II (Construction to Commence Q1 2013)

0 600 1,200 Feet

1:7,200 1" = 600'

Data Source: ESRI Bing Imagery  
AECOM Survey: May 2012

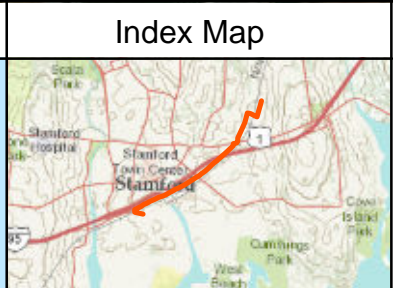
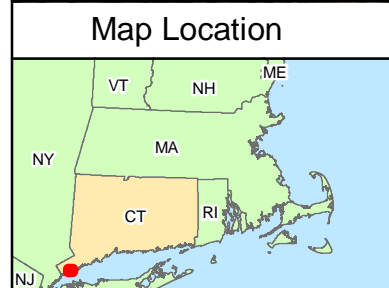
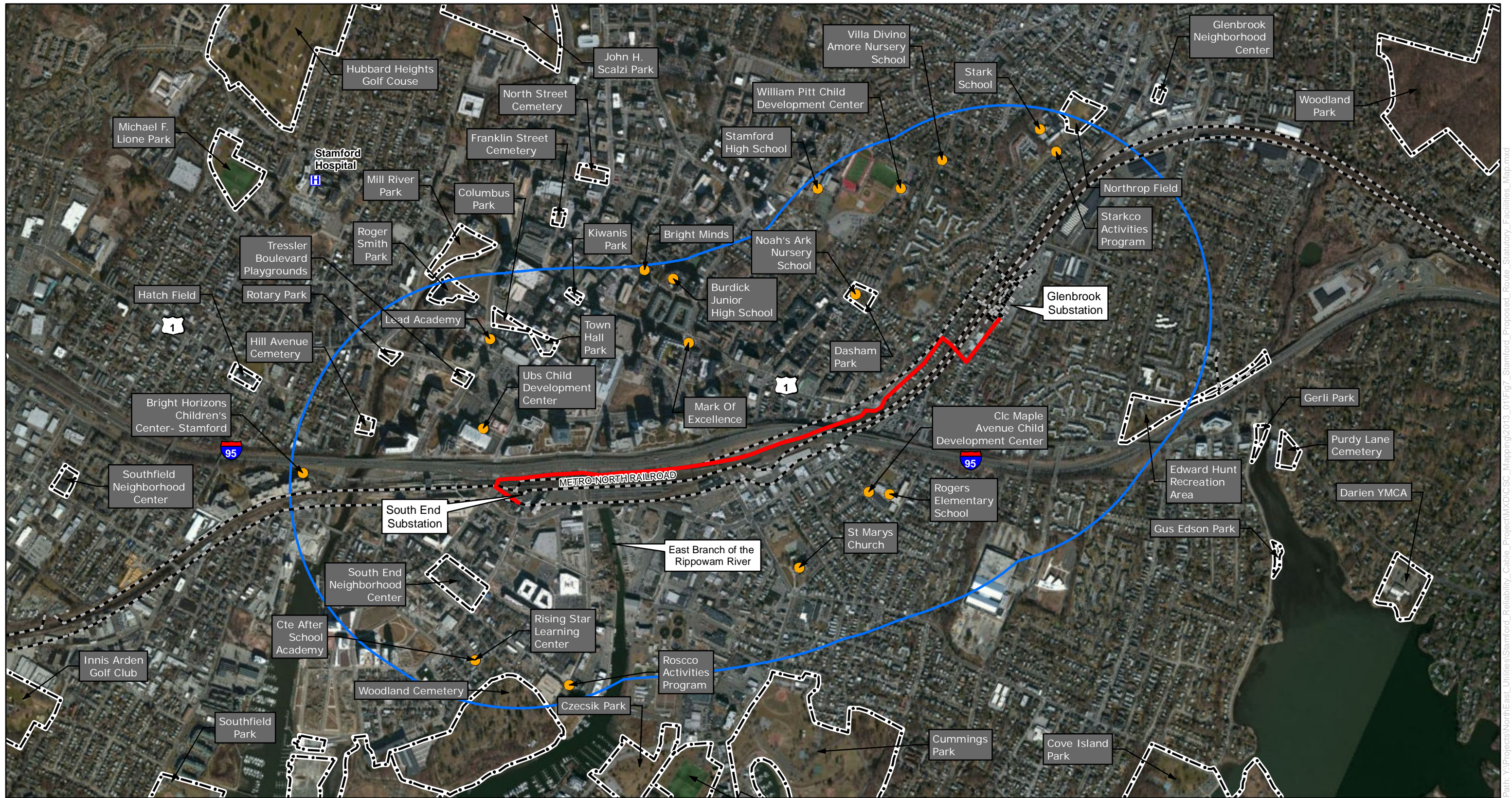
Stamford Reliability Cable Project  
115-kV Route Options  
Glenbrook to South End Substation  
Survey Aerial Map  
**ALTERNATE ROUTE**

Connecticut Light & Power  
A Northeast Utilities Company

**AECOM**

Figure 6  
Date: January 16 2013

Path: Y:\Projects\NorthEast\Utilities\Stamford\_Reliability\_Cable\_Project\Map\CS\_C\_Sc\_Mapping\2013\_01\Fig6\_Stamford\_Alternate\_Route.mxd



**Legend**

- Preferred Route
- Half-Mile Buffer
- Existing Overhead Transmission Line
- Sensitive Receptor
- H Hospital
- Municipal/Private Park or Open Space

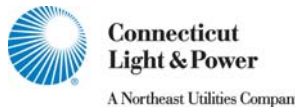
0 1,200 2,400 Feet

1:14,400 1" = 1200'

Data Source: ESRI Bing Imagery  
AECOM Survey: May 2012

Stamford Reliability Cable Project  
115-kV Route Options  
Glenbrook to South End Substation

**Project Area  
Statutory Facilities**

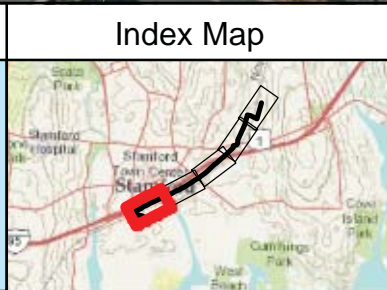
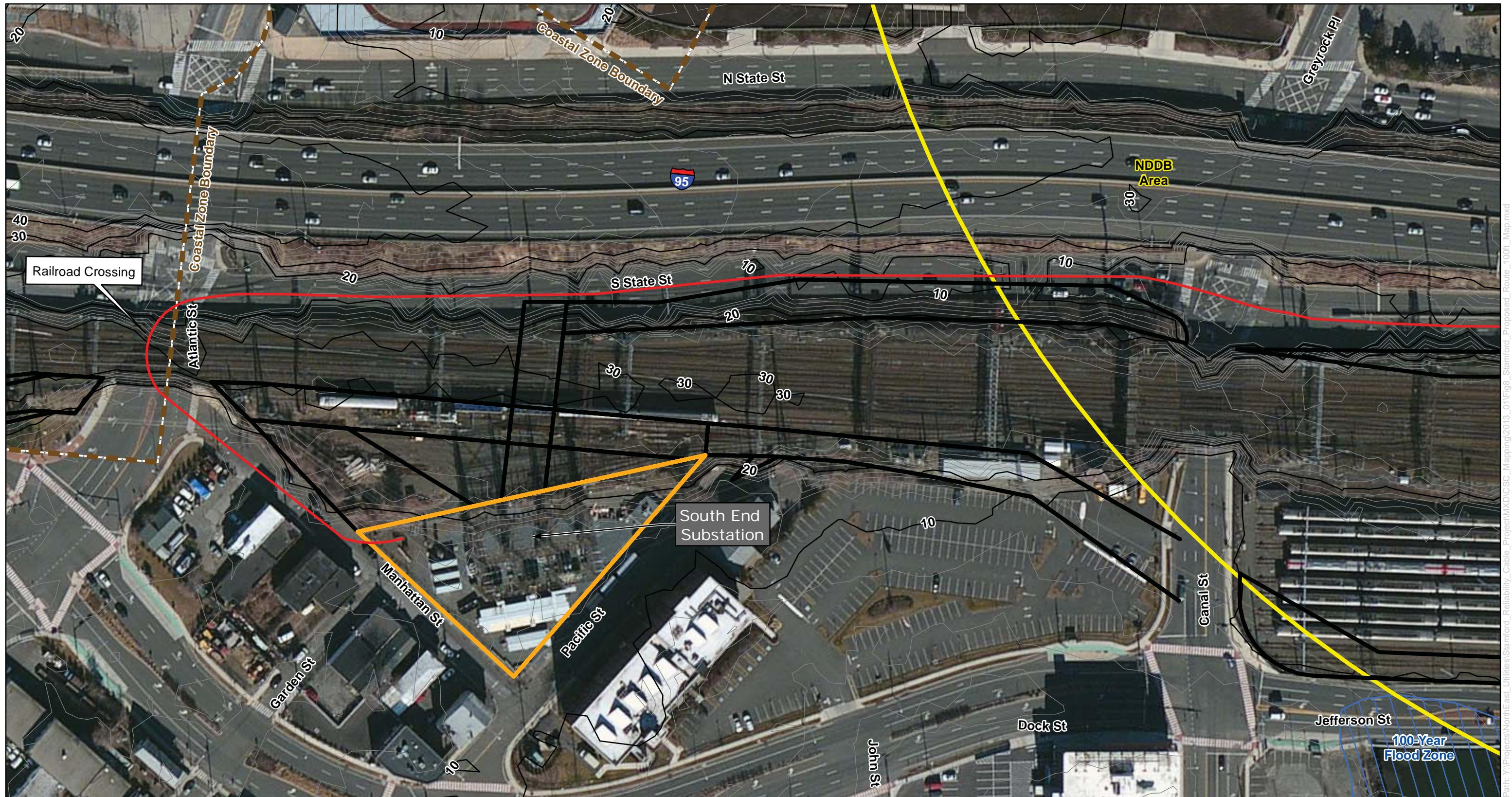


**AECOM**

Figure 7  
Date: January 16 2013

Path: Y:\Projects\NorthEast\Utilities\Stamford\_Reliability\Cable\_Project\Map\CS-Map\2013\_01\Fig7\_Stamford\_Proposed\_Route\_Statutory\_Facilities\_Map.mxd






**Legend**


- Preferred Route
- Existing Right-of-Way
- NU Property Line
- Coastal Boundary
- 100-Year Flood Zone
- Major Contour
- Minor Contour

0 100 200 Feet

1:2400 1" = 200'


  
 Data Source: ESRI Bing Imagery;  
 CT DEP 2012; FEMA 2010; NU 2011-12;  
 AECOM Survey: May 2012

**Stamford Reliability Cable Project**  
**NUS 115-kV Proposed Route**  
**Glenbrook to South End Substation**  
**100' Scale Preferred Route**  
**Existing Conditions Map**  
**Mapsheet 1 of 5**



**Connecticut Light & Power**  
A Northeast Utilities Company

---



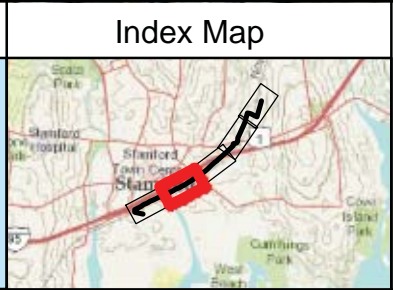
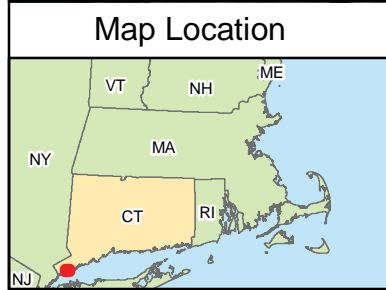
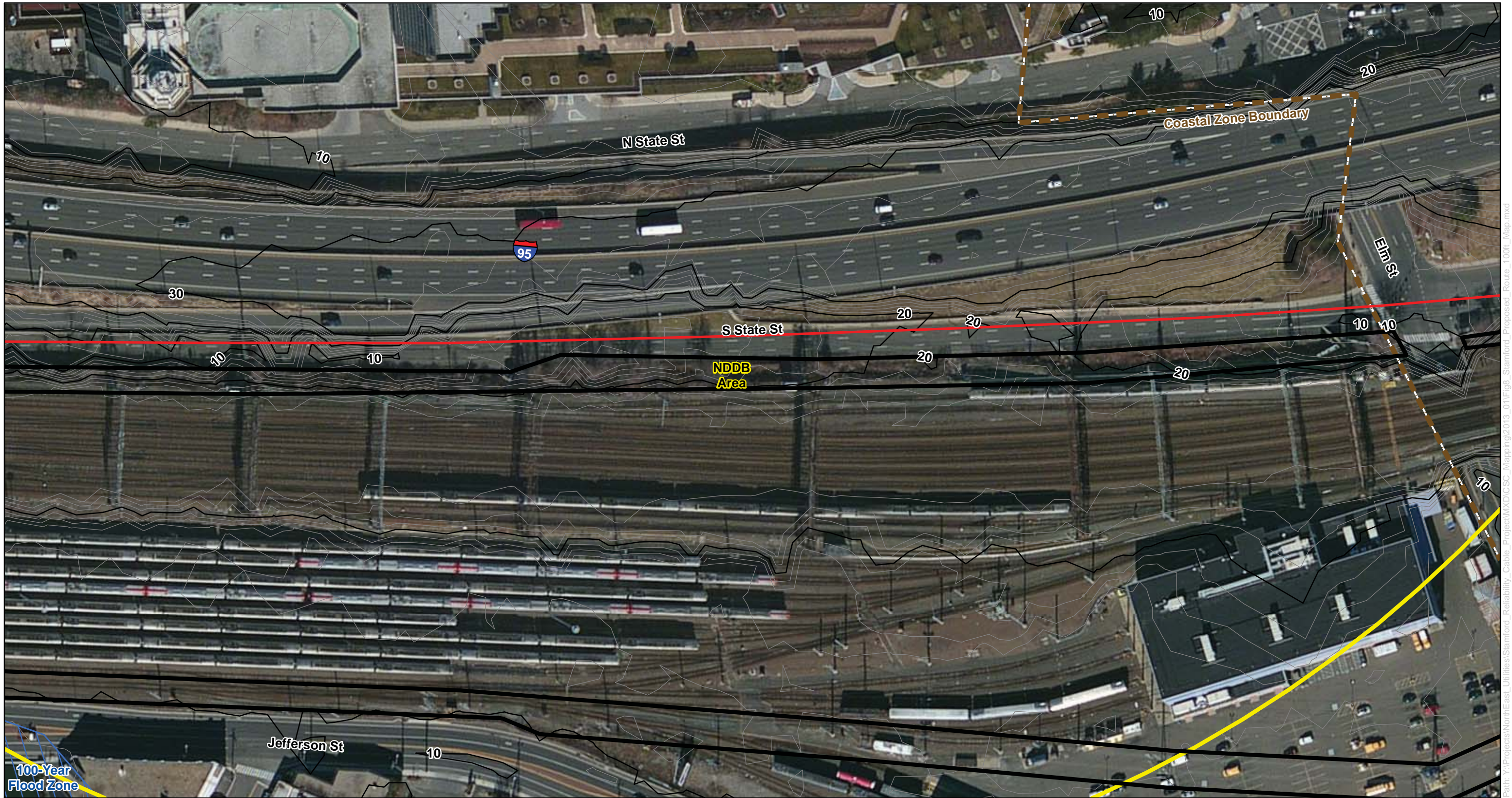
**AECOM**

---

Figure 8

Date: January 16 2013

Path: Y:\Projects\NorthEast\Utilities\Stamford\_Reliability\_Cable\_Project\XDC\SCS\_Mapping\2013\_01\Figs\_Stamford\_Proposed\_Route\_100ft\_Map.mxd



**Legend**

- Preferred Route
- Existing Right-of-Way
- Natural Diversity Area
- Coastal Boundary
- NU Property Line
- 100-Year Flood Zone
- Major Contour
- Minor Contour

0 100 200 Feet

1:2400 1" = 200'

Data Source: ESRI Bing Imagery;  
 CT DEP 2012; FEMA 2010; NU 2011-12;  
 AECOM Survey: May 2012



Stamford Reliability Cable Project  
 NUS 115-kV Proposed Route  
 Glenbrook to South End Substation  
 100' Scale Preferred Route  
 Existing Conditions Map  
 Mapsheet 2 of 5



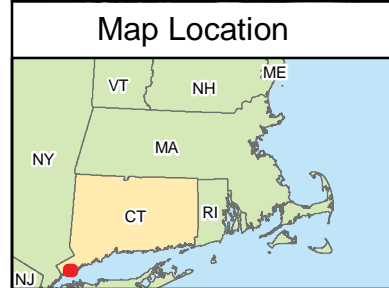
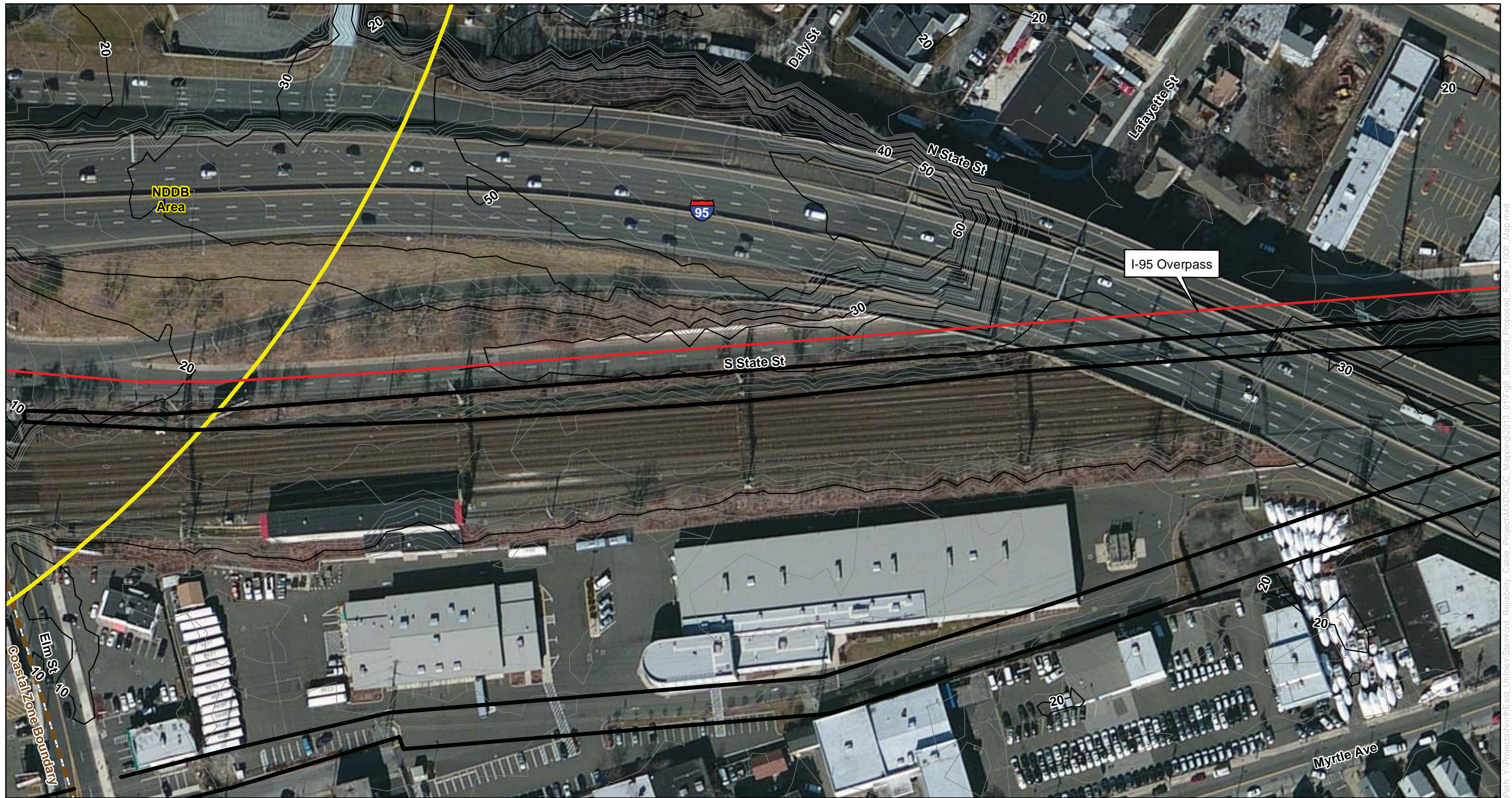
**Connecticut Light & Power**  
 A Northeast Utilities Company



**AECOM**

Figure 8  
 Date: January 16 2013

Path: \\Projects\NorthEast\Utilities\Stamford\_Reliability\_Cable\Project\Map\CS\_C\_Mapping\2013\_01\Figs\_Stamford\_Proposed\_Route\_100ft\_Map.mxd



**Legend**

- Preferred Route
- Existing Right-of-Way
- NU Property Line
- Natural Diversity Area
- Coastal Boundary
- 100-Year Flood Zone
- Major Contour
- Minor Contour

0 100 200 Feet

1:2400 1" = 200

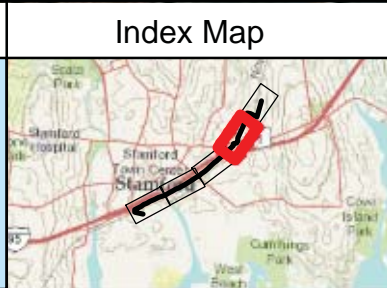
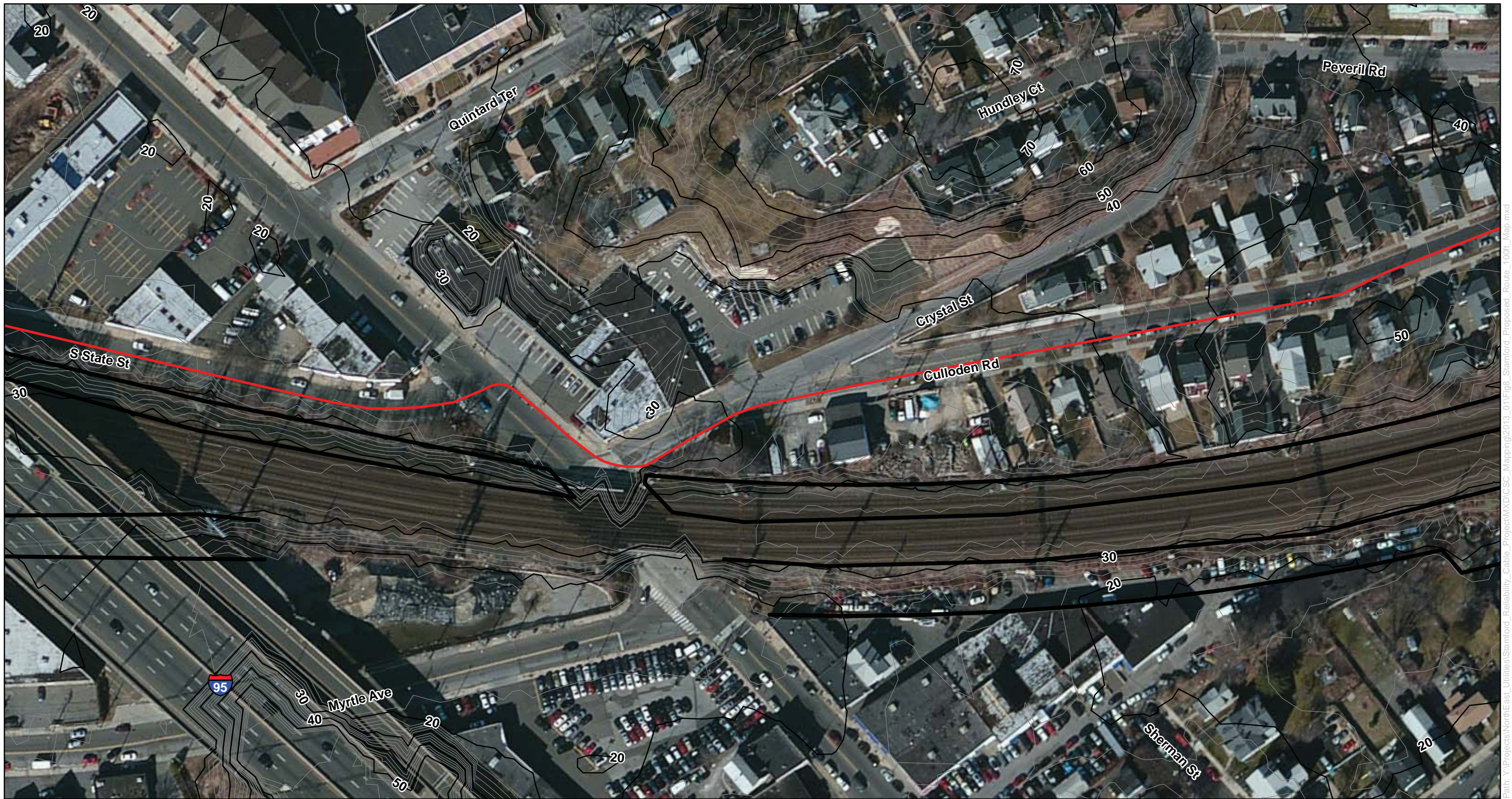
Stamford Reliability Cable Project  
 NUS 115-kV Proposed Route  
 Glenbrook to South End Substation  
 100' Scale Preferred Route  
 Existing Conditions Map  
 Mapsheet 3 of 5

Connecticut Light & Power  
 A Northeast Utilities Company

**AECOM**

Figure 8  
 Date: January 16 2013

Path: Y:\Projects\NorthEast\Utilities\Stamford\_Reliability\_Cable\Project\Map\Maping\2013\_01\Fig8\_Stamford\_Proposed\_Route\_100f\_Map.mxd



**Legend**

- Preferred Route
- Existing Right-of-Way
- NU Property Line
- Natural Diversity Area
- Coastal Boundary
- 100-Year Flood Zone
- Major Contour
- Minor Contour

0 100 200 Feet

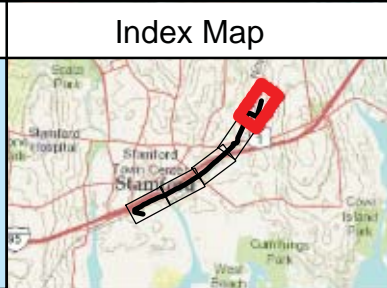
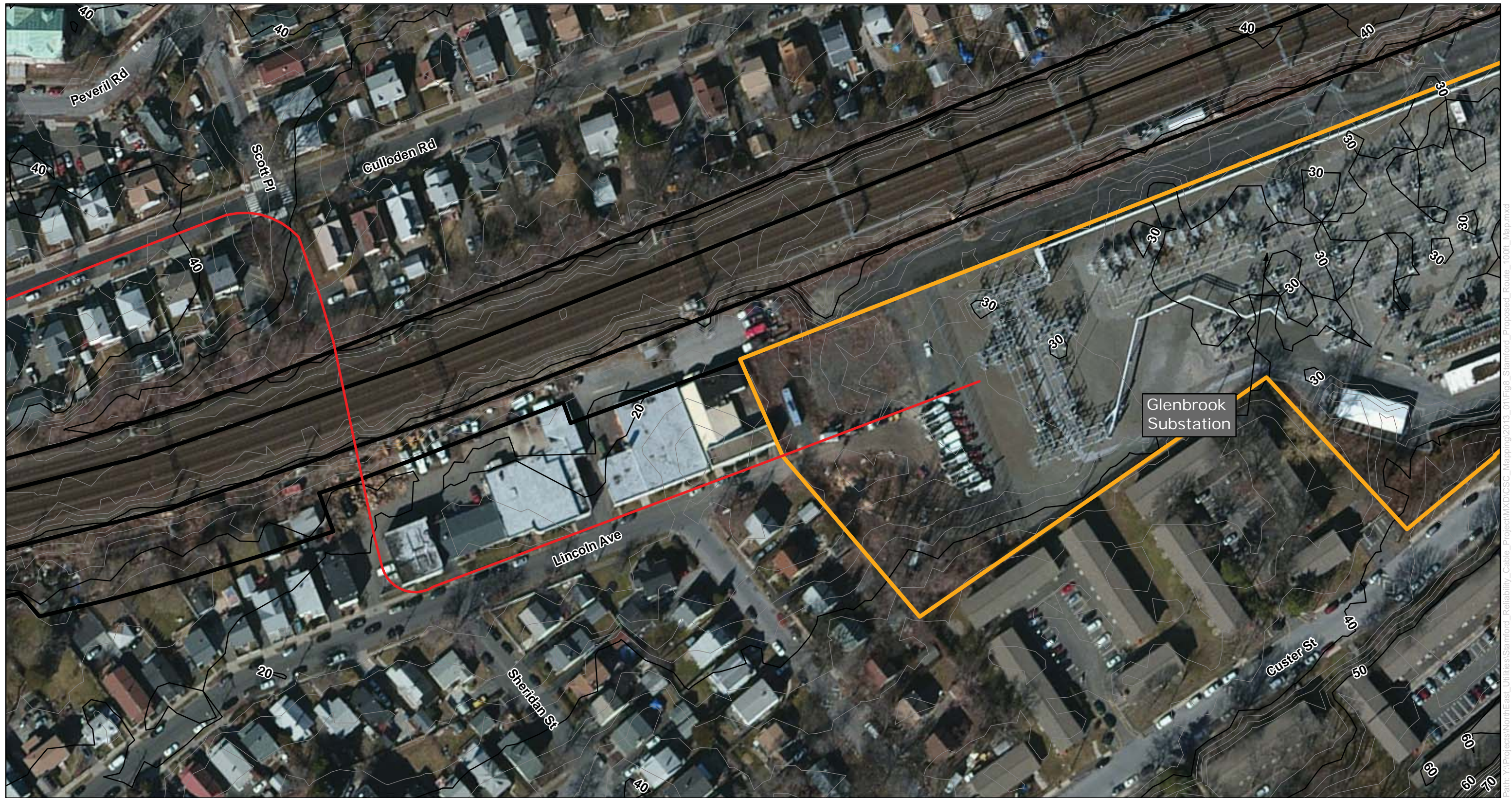
1:2400 1" = 200

Stamford Reliability Cable Project  
 NUS 115-kV Proposed Route  
 Glenbrook to South End Substation  
 100' Scale Preferred Route  
 Existing Conditions Map  
 Mapsheet 4 of 5

**AECOM**

Figure 8  
 Date: January 16 2013

Path: Y:\Projects\NorthEast\Utilities\Stamford\_Reliability\Cable\Project\Map\100' Scale\100' Scale Preferred Route - 100' Map.mxd



**Legend**

- Preferred Route
- Existing Right-of-Way
- NU Property Line
- Natural Diversity Area
- Coastal Boundary
- 100-Year Flood Zone
- Major Contour
- Minor Contour

0 100 200 Feet

1:2400 1" = 200


Data Source: ESRI Bing Imagery; CT DEP 2012; FEMA 2010; NU 2011-12; AECOM Survey: May 2012

Stamford Reliability Cable Project  
 NUS 115-kV Proposed Route  
 Glenbrook to South End Substation  
 100' Scale Preferred Route  
 Existing Conditions Map  
 Mapsheet 5 of 5



**Connecticut Light & Power**  
A Northeast Utilities Company

---



**AECOM**

---

Figure 8

Date: January 16 2013

Path: Y:\Projects\NorthEast\Utilities\Stamford\_Reliability\_Cable\Project\DXD\CSC\_Mapping\2013\_01\Fig8\_Stamford\_Proposed\_Route\_100t\_Map.mxd