



56 Prospect Street
P.O. Box 270
Hartford, CT 06141-0270

John Morissette
Project Manager – Transmission Siting
Tel: 860-728-4532

January 6, 2016

Mr. Robert Stein, Chairman
Connecticut Siting Council
Ten Franklin Square
New Britain, CT 06051

RE: Docket No. 424: Interstate Reliability Project
Monthly Construction Progress Report

Dear Chairman Stein:

Pursuant to RCSA Section 16-50j-62(b)(3) and as described in Volumes 1, Section 7, of the *Development and Management ("D&M") Plan for the Interstate Reliability Project ("Interstate"): Modifications to Card Street Substation, Lake Road Switching Station, and Killingly Substation* and the *Interstate D&M Plan for the Construction of New 345-kV Transmission Lines and Related Minor Modifications to Adjacent Lines*, The Connecticut Light and Power Company doing business as Eversource Energy (Eversource) hereby provides to the Connecticut Siting Council ("Council") this Construction Progress Report for the month of December 2015.

As you are aware, the new 341 Line (Lake Road Switching Station to the interconnection with National Grid at the Rhode Island border) was put into service as scheduled on December 18, 2015. Thus, both of the Project's new 345-kV lines are now energized.

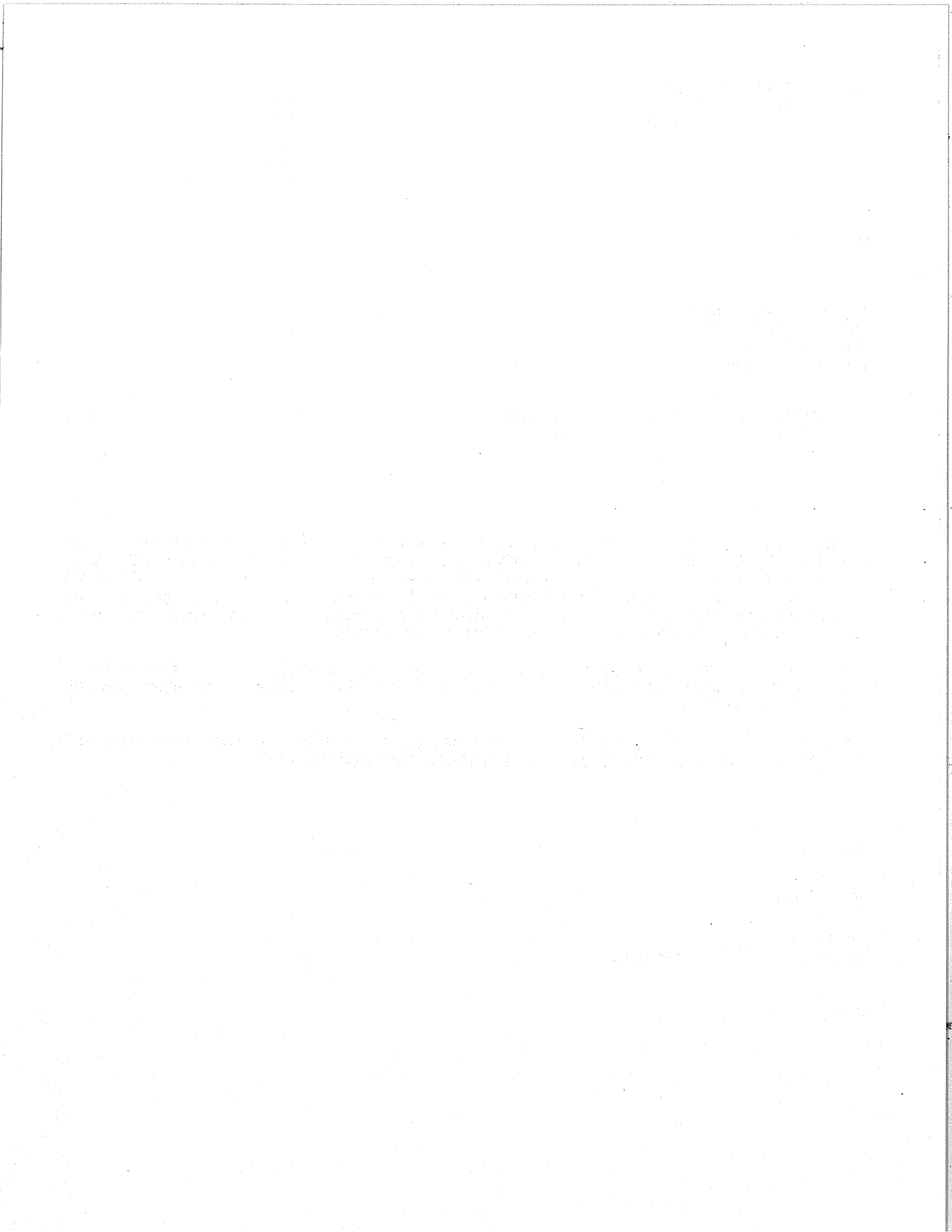
Should you or other Council members have any questions regarding this submission, please do not hesitate to contact me via e-mail at john.morissette@eversource.com or telephone at (860) 728-4532.

Sincerely,

A handwritten signature in black ink, appearing to read "John Morissette".

John Morissette
Project Manager, Transmission Siting

Enclosure



**INTERSTATE RELIABILITY PROJECT
MONTHLY CONSTRUCTION PROGRESS REPORT
DECEMBER 2015**

1. MODIFICATIONS TO SUBSTATIONS AND SWITCHING STATIONS

On December 18, 2015, the new 341 Line between Lake Road Switching Station and the interconnection with National Grid at the Rhode Island border was energized. Thus, the entire Project (3271 and 341 Lines) are now in service.

The only remaining work at stations is very minor and involves removing special protection system (SPS) equipment at Lake Road Switching Station. This work is scheduled for January 2016.

Table 1 (attached) summarizes the status of work at Card Street Substation, Lake Road Switching Station, and Killingly Substation as of December 31, 2015.

2. NEW 345-kV TRANSMISSION LINES AND RELATED MINOR MODIFICATIONS TO ADJACENT LINES

All transmission line construction work, including site rehabilitation, was completed in mid-October. During December, a Project Environmental Inspector (EI) continued to monitor the status of revegetation and stabilization along the restored right-of-way (ROW). An EI will continue to perform these ROW monitoring activities until final stabilization, pursuant to permit requirements, is achieved.

Because the ROW restoration (stabilization) monitoring does not entail construction activities, construction progress on the transmission line portion of the Project was reported as 100% complete as of October 31, 2015. Therefore, no table of construction progress is included as part of this report.

Table 1
Interstate Reliability Project - Connecticut
Substation / Switching Station Construction Progress Report
(As of December 31, 2015)

Station	Activity			
	Construction Start Date	Site Preparation	Equipment Installation	Testing
Card Street	4/7/2014	100%	100%	100%
Lake Road	4/7/2014	100%	100%	100%*
Killingly	4/7/2014	100%	100%	N/A
Summary: All Stations	4/7/2014	100%	100%	100%

*All lines in service; all station work complete except for very minor activities involved in the removal of SPS equipment at Lake Road Switching Station. This equipment is scheduled to be removed in January 2016.