

ATTACHMENT 8

*Comparative Viewshed Analysis
Proposed North Atlantic Towers Wireless
Telecommunications Facility
Woodstock (CT1182)
Route 198
Woodstock, Connecticut*

NOTE:

- Viewshed analysis conducted using ESRI's Spatial Analyst.
- Heights analyzed are 110 feet AGL and 150 feet AGL.
- Existing tree canopy height estimated at 65 feet.
- Study Area is comprised of a two-mile radius surrounding the proposed facility and includes 8,042 acres of land.
- Results not field verified by VHB.

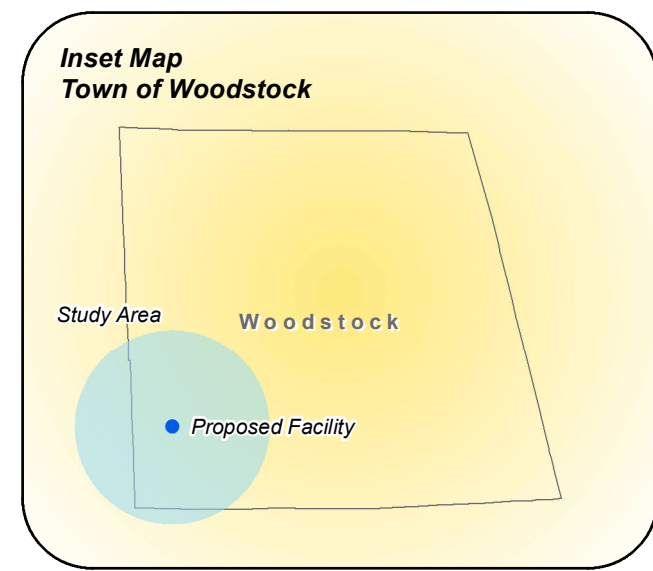
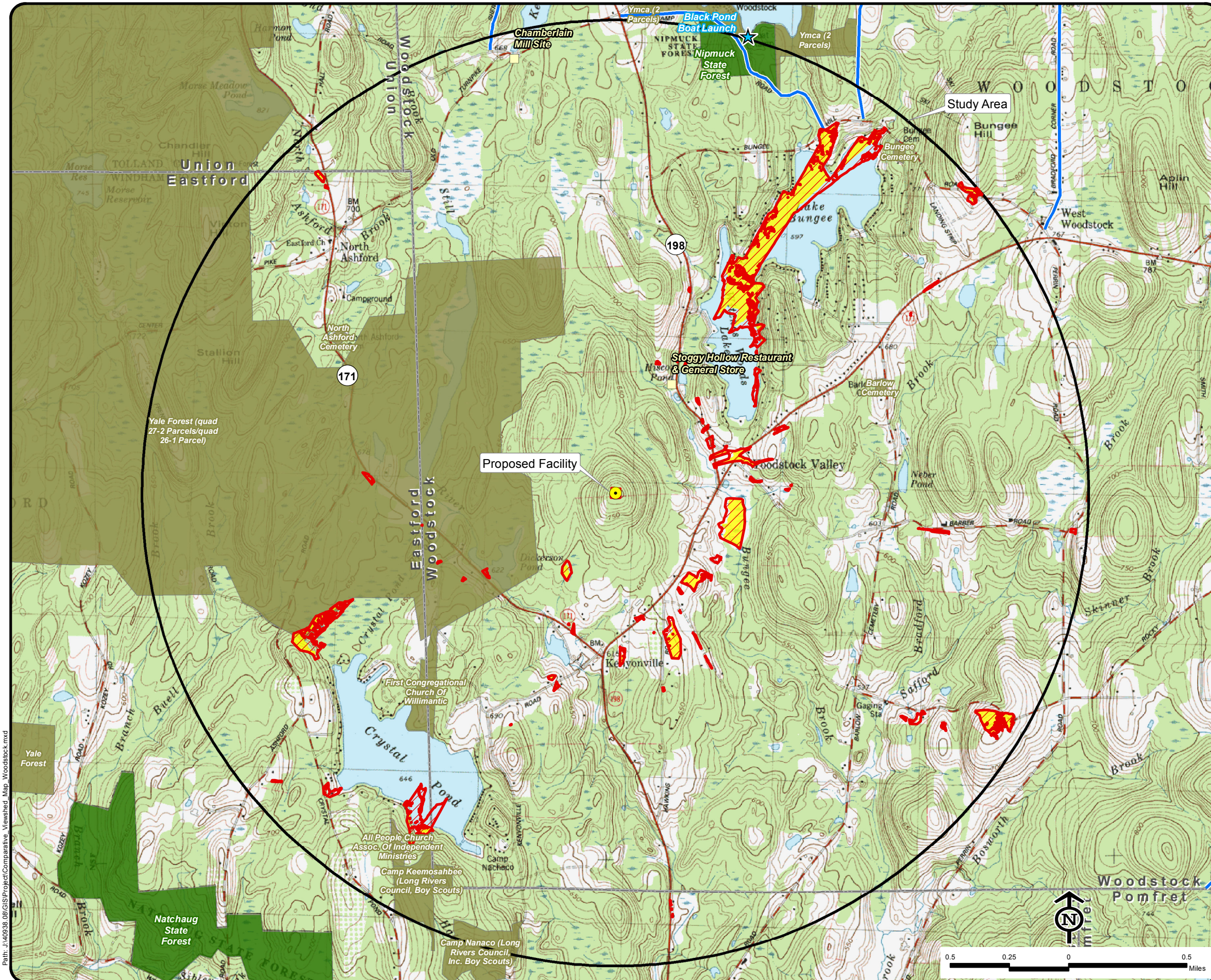
DATA SOURCES:

- Digital elevation model (DEM) derived from Connecticut LiDAR-based Digital Elevation Data (collected in 2000) with a 10-foot spatial resolution produced by the University of Connecticut and the Center for Land Use Education and Research (CLEAR); 2007
- Forest areas derived from 2010 digital orthophotos with 0.50-meter pixel resolution; digitized by VHB, 2010
- Base map comprised of Eastford and Westford (1983) USGS Quadrangle Maps
- Municipal and Private Open Space data layer provided by CT DEP, 1997
- Federal Open Space data layer provided by CT DEP, 2004
- CT DEP Property data layer provided by CT DEP, December 2010
- CT DEP boat launches data layer provided by CT DEP, Dec 2008
- Scenic Roads layer derived from available State and Local listings

Map Date: 2/14/2012

Legend

- | | | | |
|--|---|--|---|
| | Proposed Tower Location | | CT DEP Property (CT DEP, December 2010) |
| | Approximate Year-Round Visibility At 110 Feet AGL (+/- 92 acres) | | State Forest |
| | Approximate Year-Round Visibility At 150 Feet AGL (+/- 134 acres) | | State Park |
| | Protected Municipal and Private Open Space (CT DEP, 1997) | | DEP Owned Waterbody |
| | Cemetery | | State Park Scenic Reserve |
| | Preservation | | Historic Preserve |
| | Conservation | | Natural Area Preserve |
| | Existing Preserved Open Space | | Fish Hatchery |
| | Recreation | | Flood Control |
| | General Recreation | | Other |
| | School | | State Park Trail |
| | Uncategorized | | Water Access |
| | Boat Launches (CT DEP, Dec 2009) | | Wildlife Area |
| | Scenic Road (State and Local) | | Wildlife Sanctuary |
| | Town Line | | |
| | | | Federal Open Space (CT DEP, 2004) |



Path: J:\0938_08\GIS\Project\Comparative_Viewshed_Map_Woodstock.mxd

