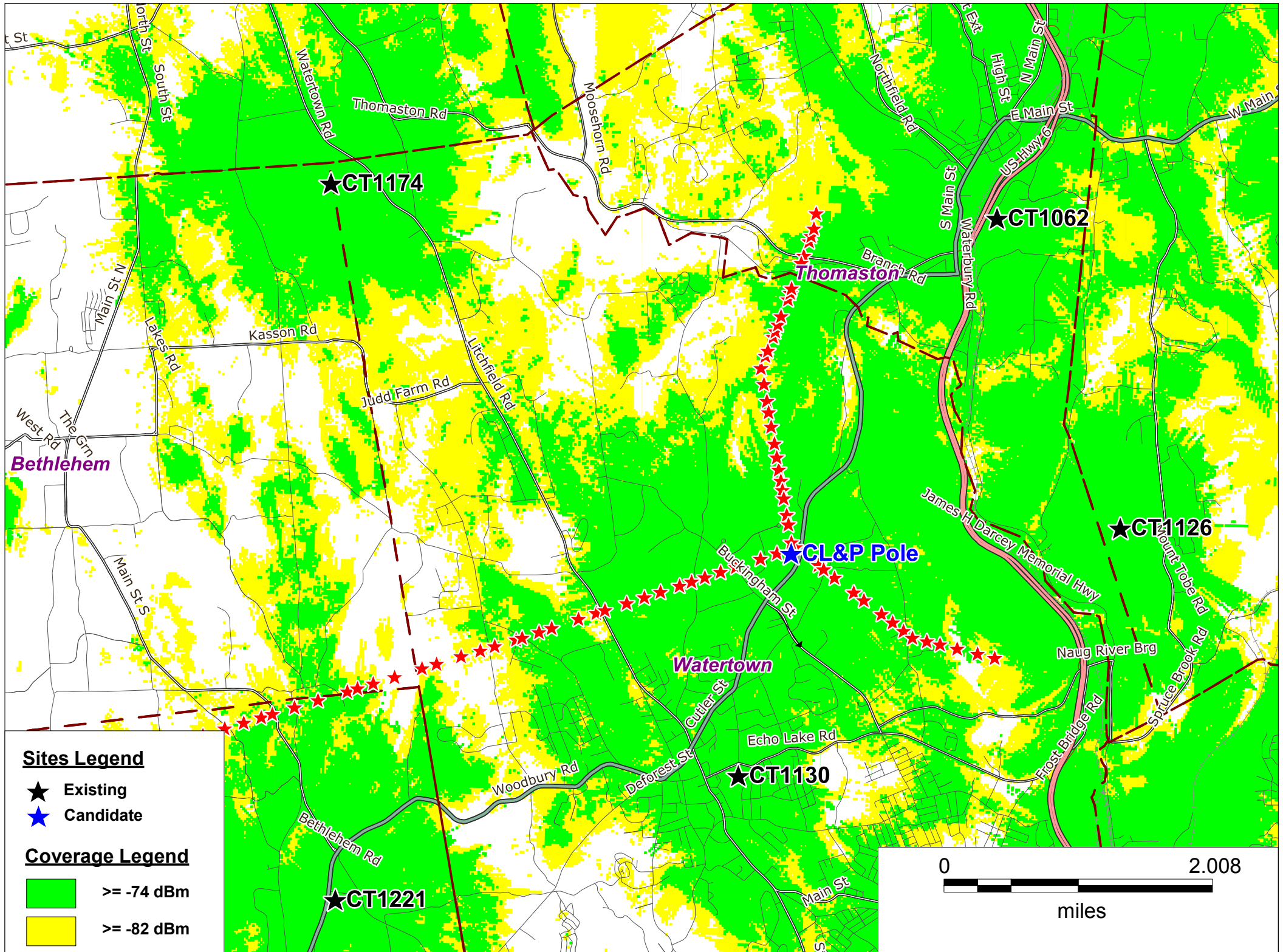


# ATTACHMENT 1

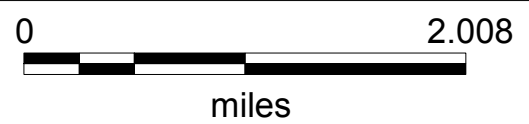


**Sites Legend**

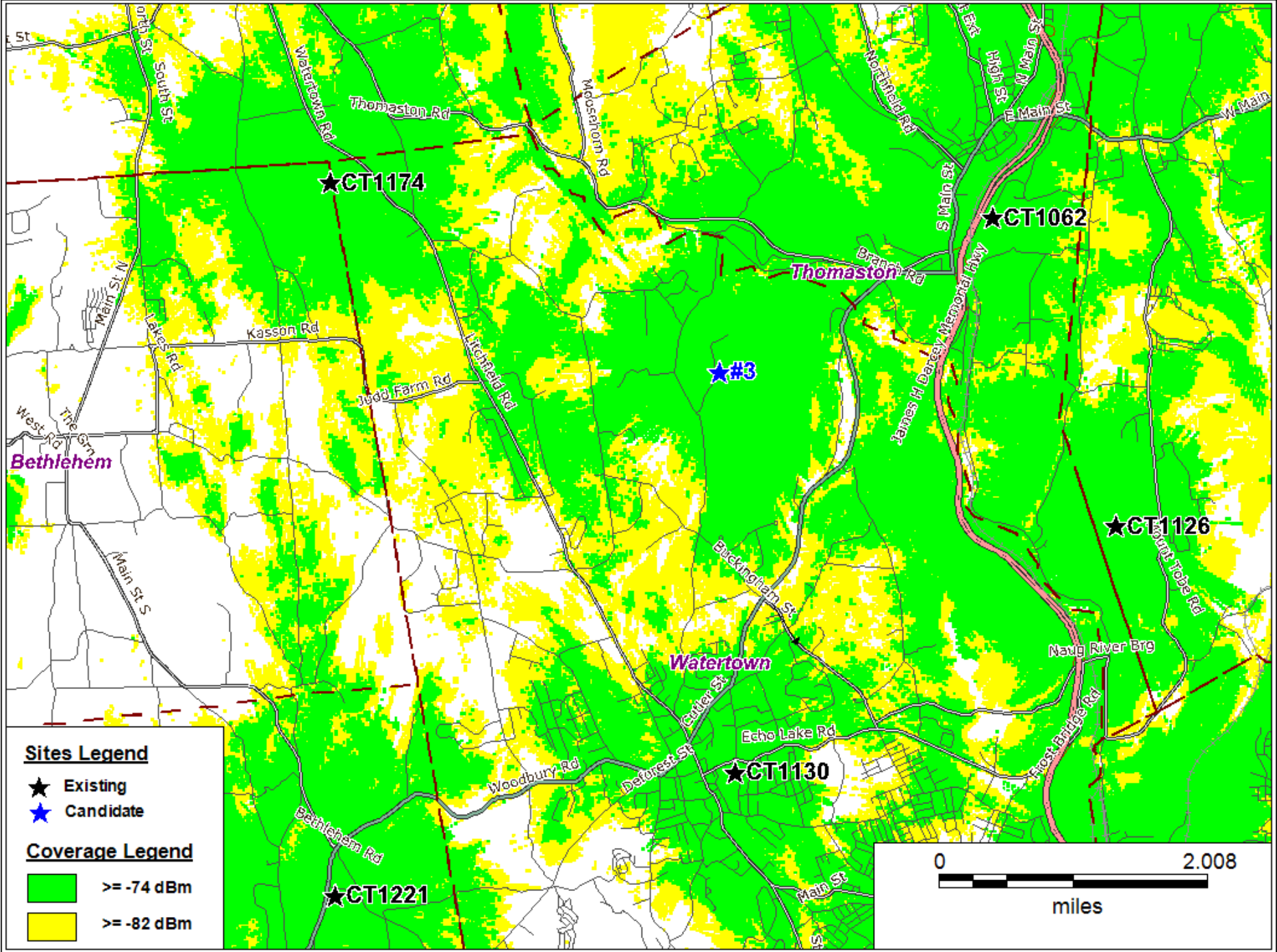
- ★ Existing
- ★ Candidate

**Coverage Legend**

- $\geq -74$  dBm
- $\geq -82$  dBm



**CL&P Pole at 41.627292N/73.104044W @190ft AGL**



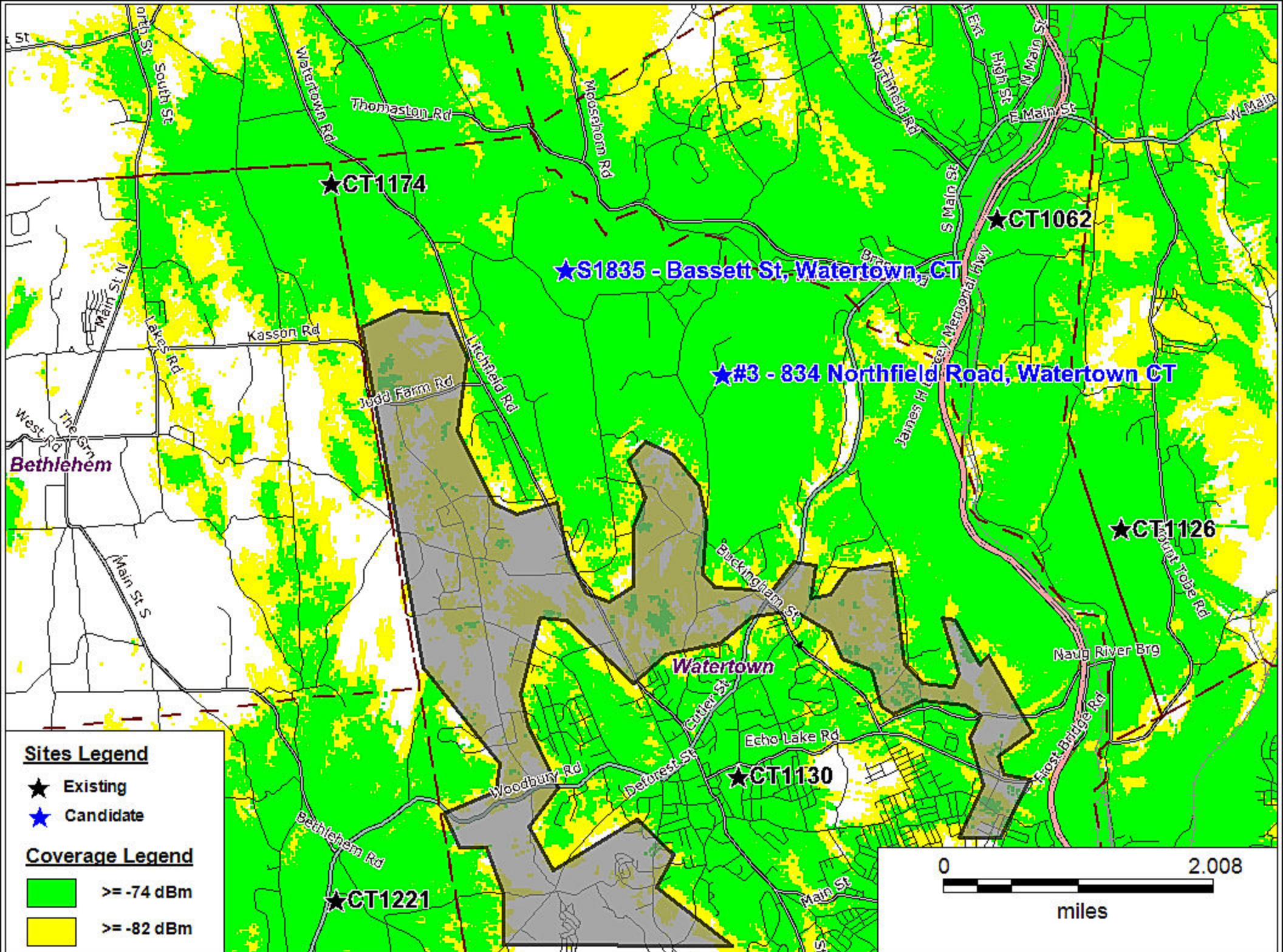
**Sites Legend**

- ★ Existing
- ★ Candidate

**Coverage Legend**

- >= -74 dBm
- >= -82 dBm

**Composite Coverage: #3 - 834 Northfield Rd., Watertown CT - (Map 47/Block 86/Lot 11A) @ 160ft AGL**

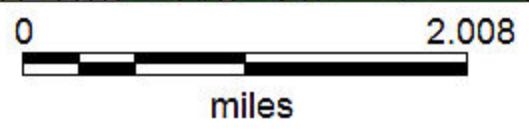


**Sites Legend**

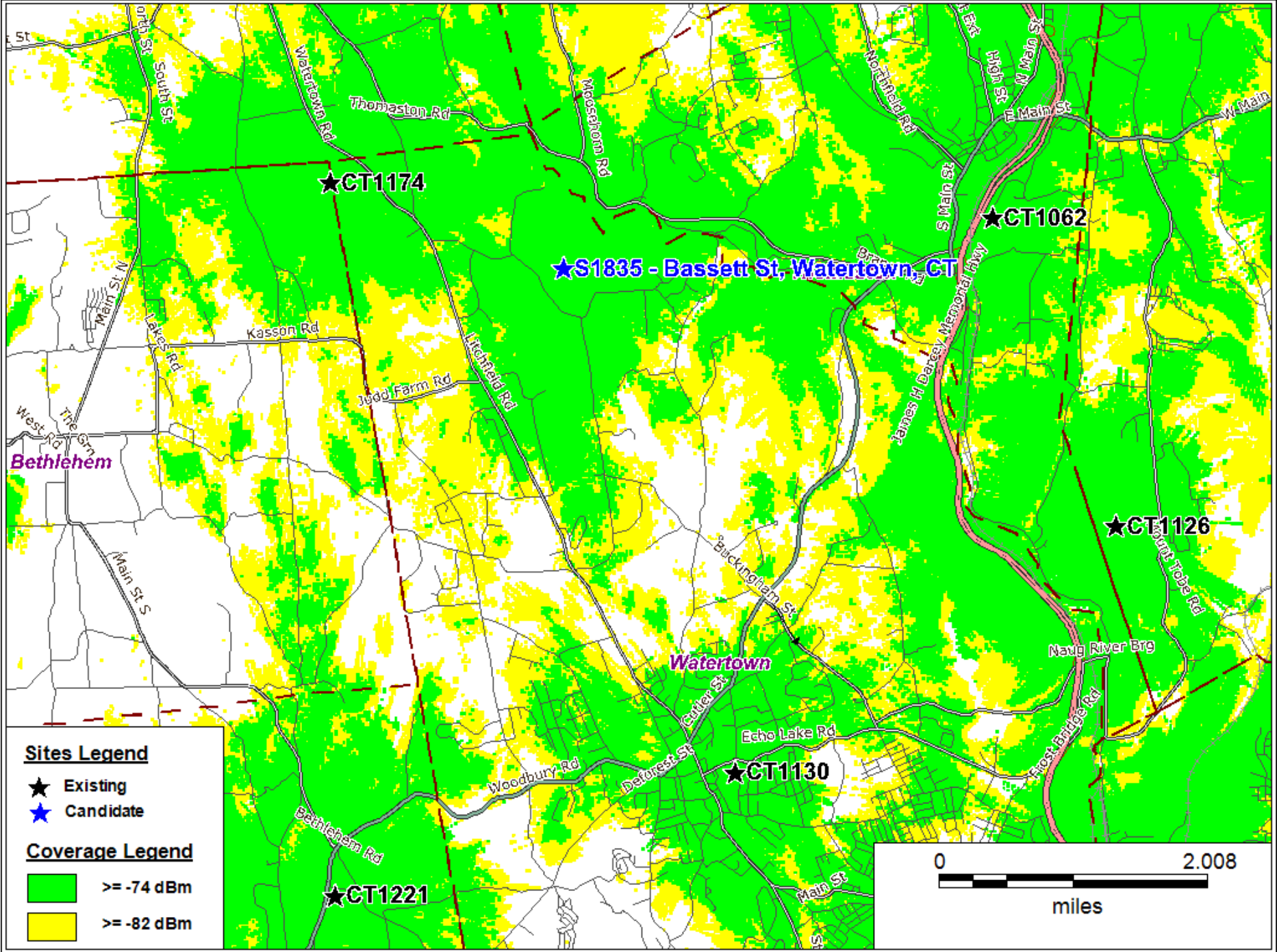
- ★ Existing
- ★ Candidate

**Coverage Legend**

- >= -74 dBm
- >= -82 dBm



**AT&T Composite Coverage in Watertown, CT (Bassett Rd 1 @127ft and Candidate #3 @160ft)**

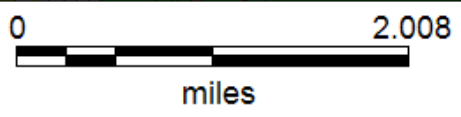


**Sites Legend**

- ★ Existing
- ★ Candidate

**Coverage Legend**

- >= -74 dBm
- >= -82 dBm



**AT&T Composite Coverage in Watertown, CT (Bassett Rd 1 @127ft)**