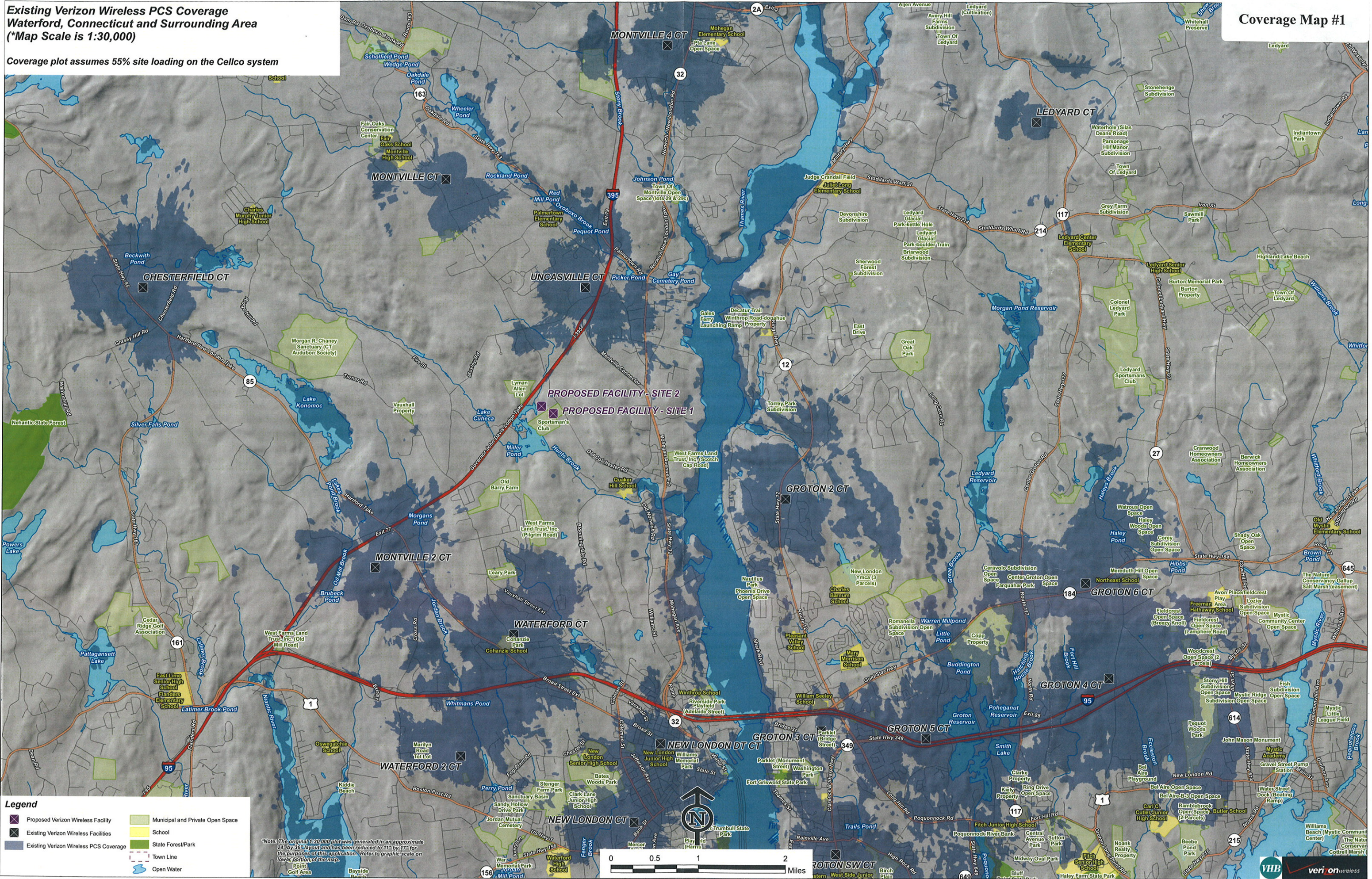


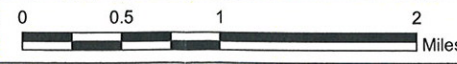
**Existing Verizon Wireless PCS Coverage
Waterford, Connecticut and Surrounding Area
(*Map Scale is 1:30,000)**

Coverage plot assumes 55% site loading on the Cellco system



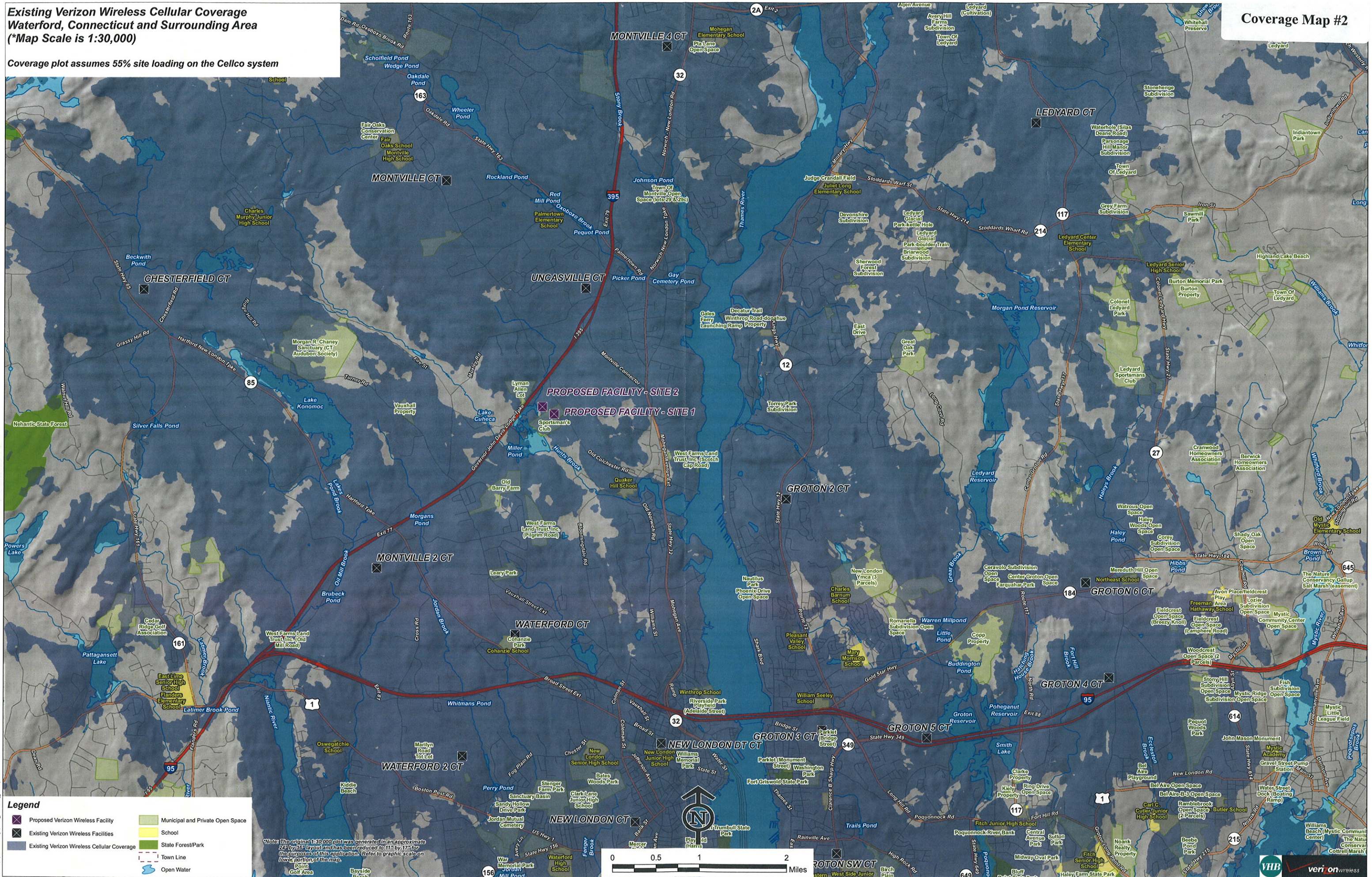
- Legend**
- X Proposed Verizon Wireless Facility
 - X Existing Verizon Wireless Facilities
 - Existing Verizon Wireless PCS Coverage
 - Municipal and Private Open Space
 - School
 - State Forest/Park
 - Town Line
 - Open Water

Note: The original 1:30,000 plot was generated in an approximate 24" by 36" layout and has been reduced to 11" by 17" for the purposes of this application. Refer to graphic scale on lower portion of the map.



**Existing Verizon Wireless Cellular Coverage
Waterford, Connecticut and Surrounding Area
(*Map Scale is 1:30,000)**

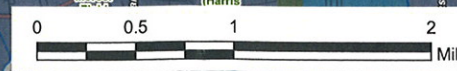
Coverage plot assumes 55% site loading on the Cellco system



Legend

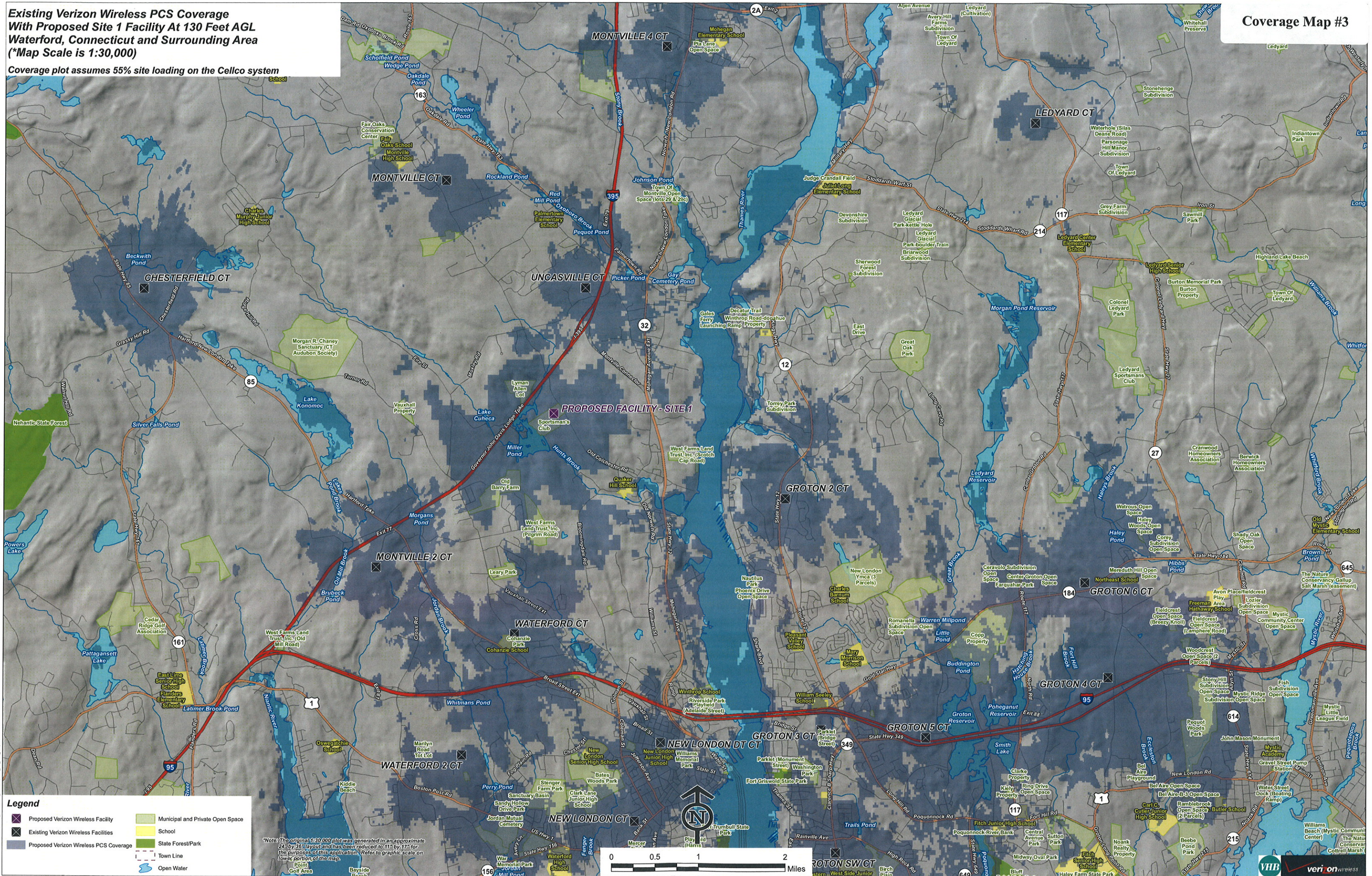
- Proposed Verizon Wireless Facility
- Municipal and Private Open Space
- School
- Existing Verizon Wireless Facilities
- State Forest/Park
- Existing Verizon Wireless Cellular Coverage
- Town Line
- Open Water

Notes: The original 1:30,000 plot was generated in an approximate 24" by 36" layout and has been reduced to 11" by 17" for the purposes of this application. Refer to graphic scale on lower portion of this map.



**Existing Verizon Wireless PCS Coverage
With Proposed Site 1 Facility At 130 Feet AGL
Waterford, Connecticut and Surrounding Area
(*Map Scale is 1:30,000)**

Coverage plot assumes 55% site loading on the Cellco system



Legend

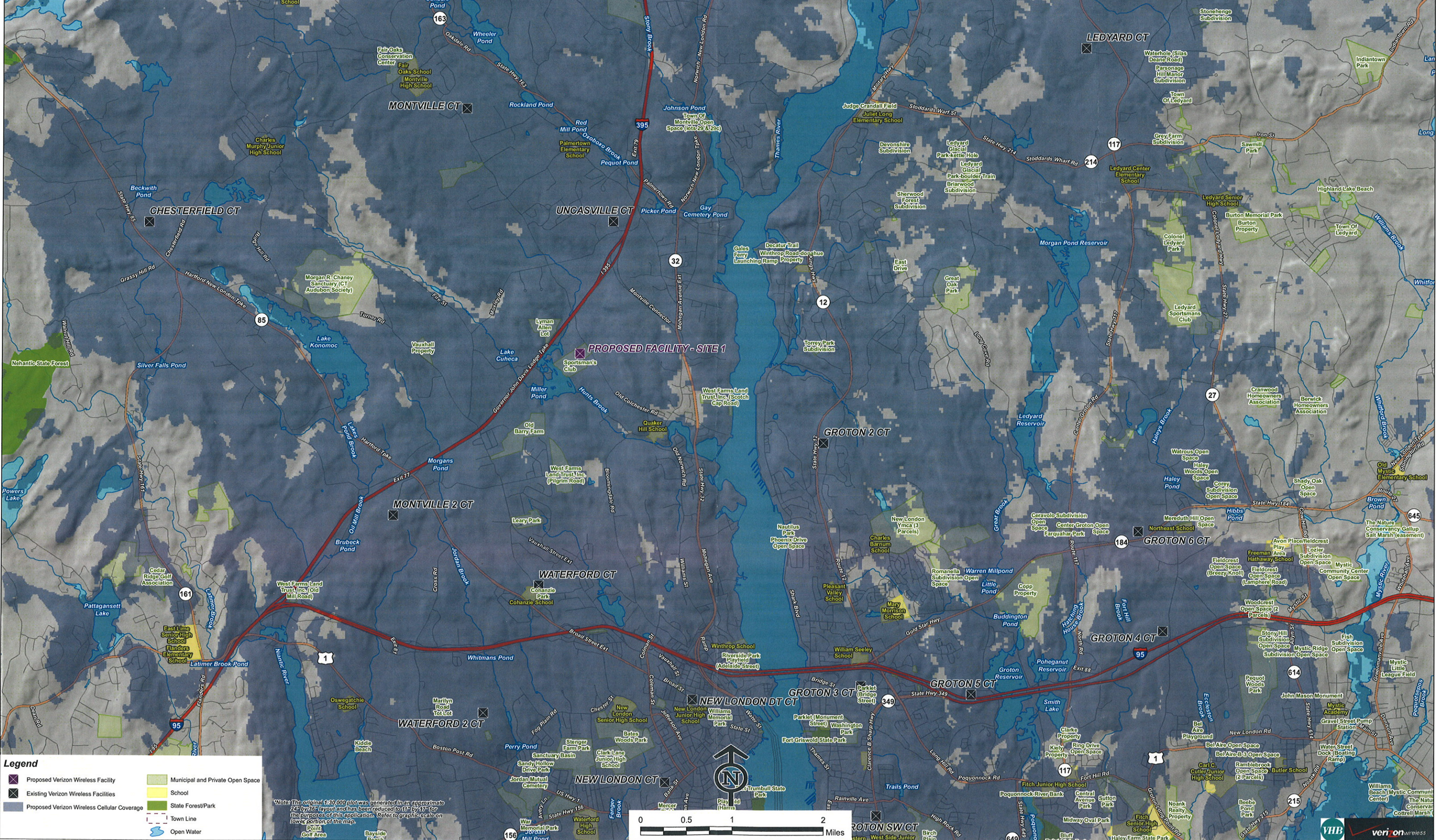
- Proposed Verizon Wireless Facility
- Existing Verizon Wireless Facilities
- Proposed Verizon Wireless PCS Coverage
- Municipal and Private Open Space
- School
- State Forest/Park
- Town Line
- Open Water

*Note: The original 1:30,000 plot was generated in an approximate 24" by 36" layout and has been reduced to 11" by 17" for the purposes of this application. Refer to graphic scale on lower portion of the map.



**Existing Verizon Wireless Cellular Coverage
With Proposed Site 1 Facility At 130 Feet AGL
Waterford, Connecticut and Surrounding Area
(*Map Scale is 1:30,000)**

Coverage plot assumes 55% site loading on the Cellco system



Legend

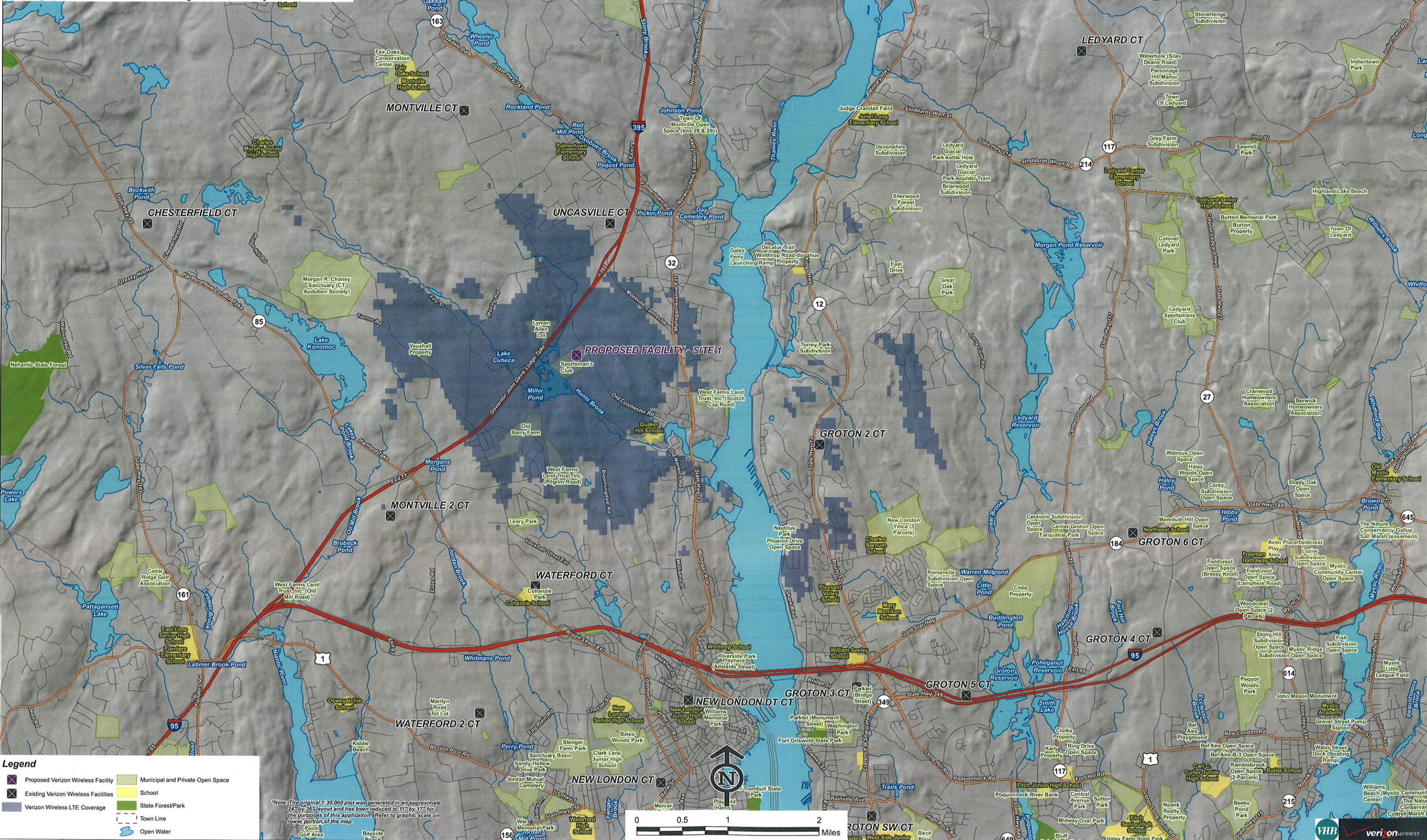
- Proposed Verizon Wireless Facility
- Existing Verizon Wireless Facilities
- Proposed Verizon Wireless Cellular Coverage
- Municipal and Private Open Space
- School
- State Forest/Park
- Town Line
- Open Water

Note: The original 1:30,000 plot was generated in an approximate 24" by 36" layout and has been reduced to 11" by 17" for the purposes of this application. Refer to graphical scale on lower portion of the map.



**Verizon Wireless LTE (700 MHz) Coverage
With Proposed Site 1 Facility At 130 Feet AGL
Waterford, Connecticut and Surrounding Area
(*Map Scale is 1:30,000)**

Coverage plot assumes 55% site loading on the Cellco system



Legend

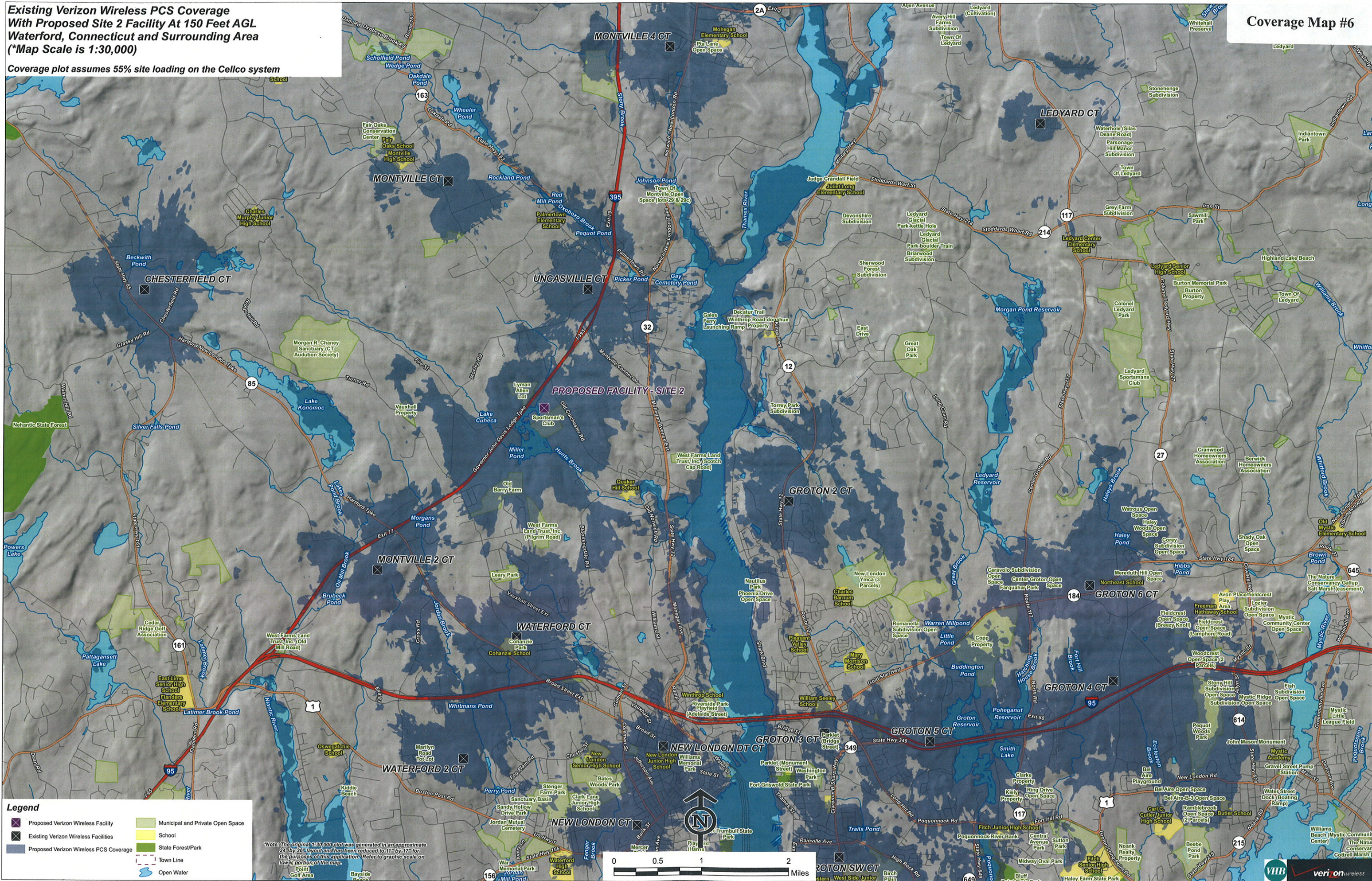
- Proposed Verizon Wireless Facility
- Existing Verizon Wireless Facilities
- Verizon Wireless LTE Coverage
- Municipal and Private Open Space
- School
- State Forest/Park
- Town Line
- Open Water

**Note: The original 1:30,000 plot was generated in an approximate 24" by 36" layout and has been reduced to 11" by 17" for the purposes of this application. Refer to graphic scale on lower portion of the map.*



**Existing Verizon Wireless PCS Coverage
With Proposed Site 2 Facility At 150 Feet AGL
Waterford, Connecticut and Surrounding Area
(*Map Scale is 1:30,000)**

Coverage plot assumes 55% site loading on the Cellco system



Legend

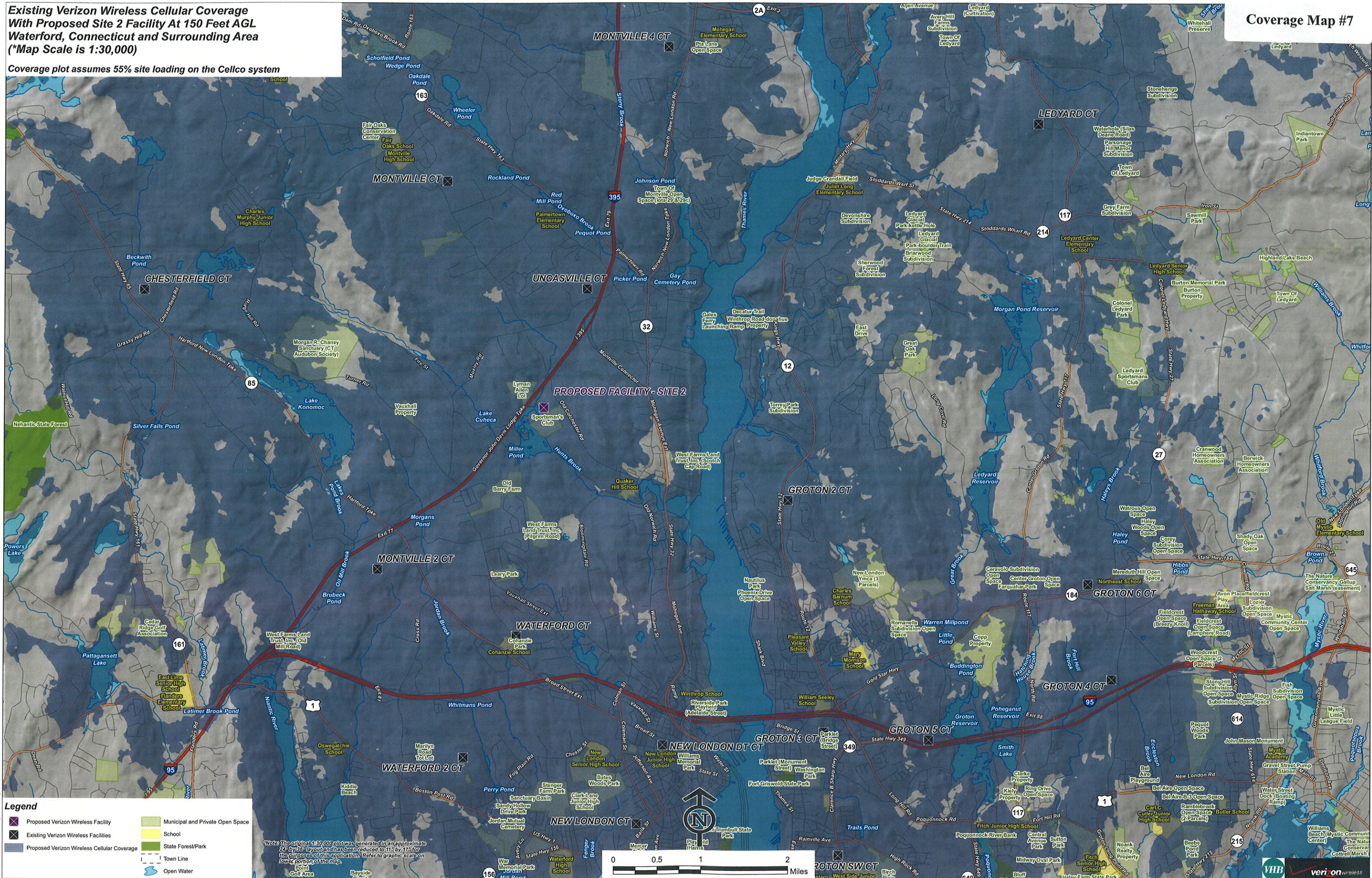
- Proposed Verizon Wireless Facility
- Existing Verizon Wireless Facilities
- Proposed Verizon Wireless PCS Coverage
- Municipal and Private Open Space
- School
- State Forest/Park
- Town Line
- Open Water

*Note: The original 1:30,000 plot was generated in an approximate 24" by 36" layout and has been reduced to 11" by 17" for the purposes of this application. Refer to graphic scale on lower portion of the map.



**Existing Verizon Wireless Cellular Coverage
With Proposed Site 2 Facility At 150 Feet AGL
Waterford, Connecticut and Surrounding Area
(*Map Scale is 1:30,000)**

Coverage plot assumes 55% site loading on the Cellco system



Legend

- Proposed Verizon Wireless Facility
- Existing Verizon Wireless Facilities
- Proposed Verizon Wireless Cellular Coverage
- Municipal and Private Open Space
- School
- State Forest/Park
- Town Line
- Open Water

Notes: The original 1:30,000 plot was generated in an approximate 24" by 36" layout and has been reduced to 11" by 17" for the purposes of this application. Refer to graphic scale on lower portion of the map.



**Verizon Wireless LTE (700 MHz) Coverage
With Proposed Site 2 Facility At 150 Feet AGL
Waterford, Connecticut and Surrounding Area
(*Map Scale is 1:30,000)**

Coverage plot assumes 55% site loading on the Cellco system



Legend

- Proposed Verizon Wireless Facility
- Existing Verizon Wireless Facilities
- Verizon Wireless LTE Coverage
- Municipal and Private Open Space
- School
- State Forest/Park
- Town Line
- Open Water

*Note: The original 1:30,000 plot was generated in an approximate 24" by 36" layout and has been reduced to 11" by 17" for the purposes of this application. Refer to graphic scale on lower portion of the map.

