



# ZONING MAP

## Town of Guilford

### State of Connecticut

Effective Date : July 16, 2010

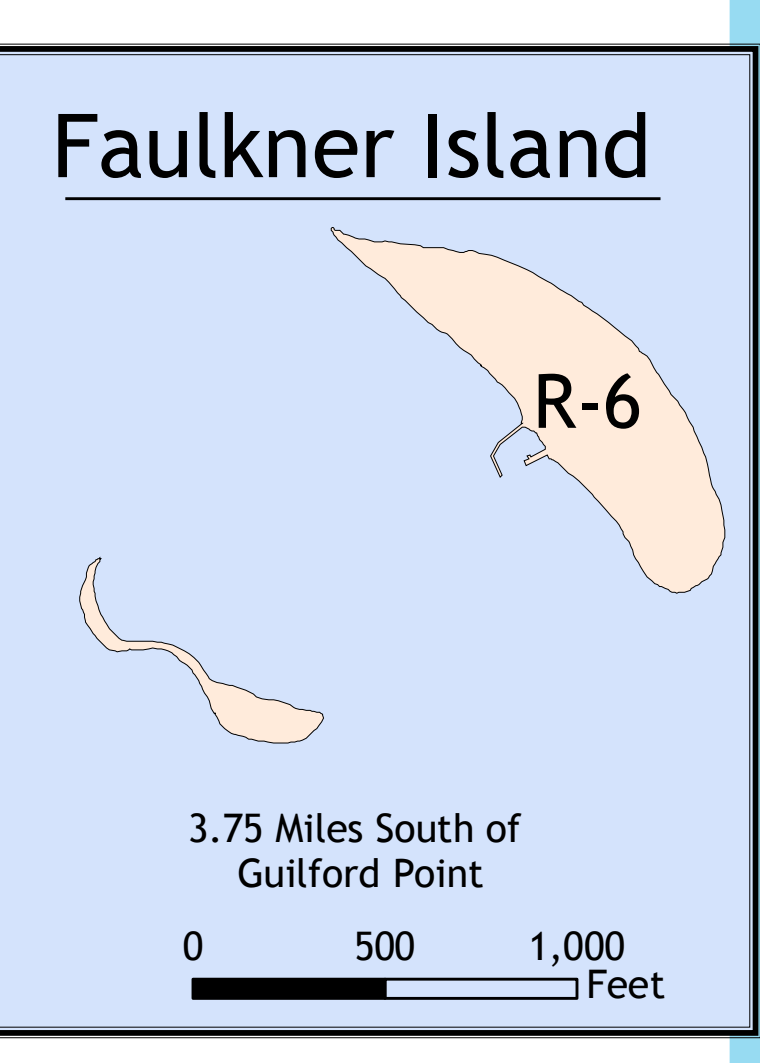
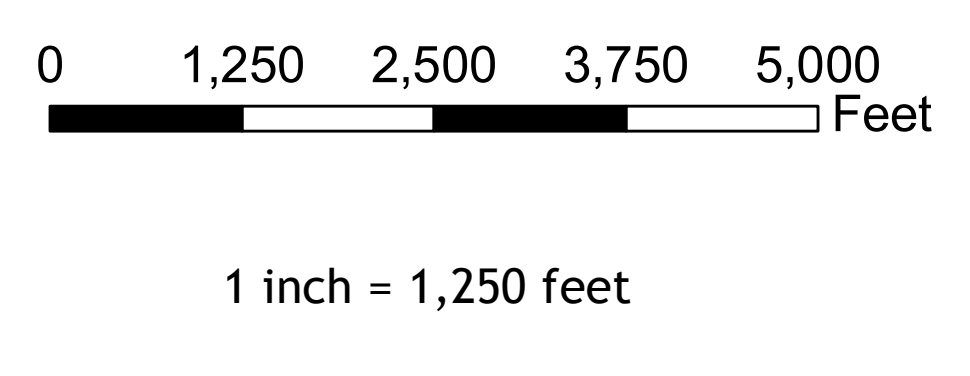
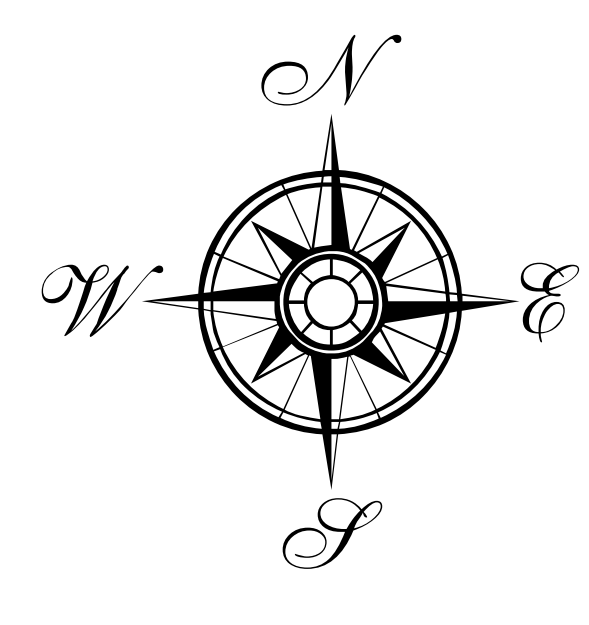
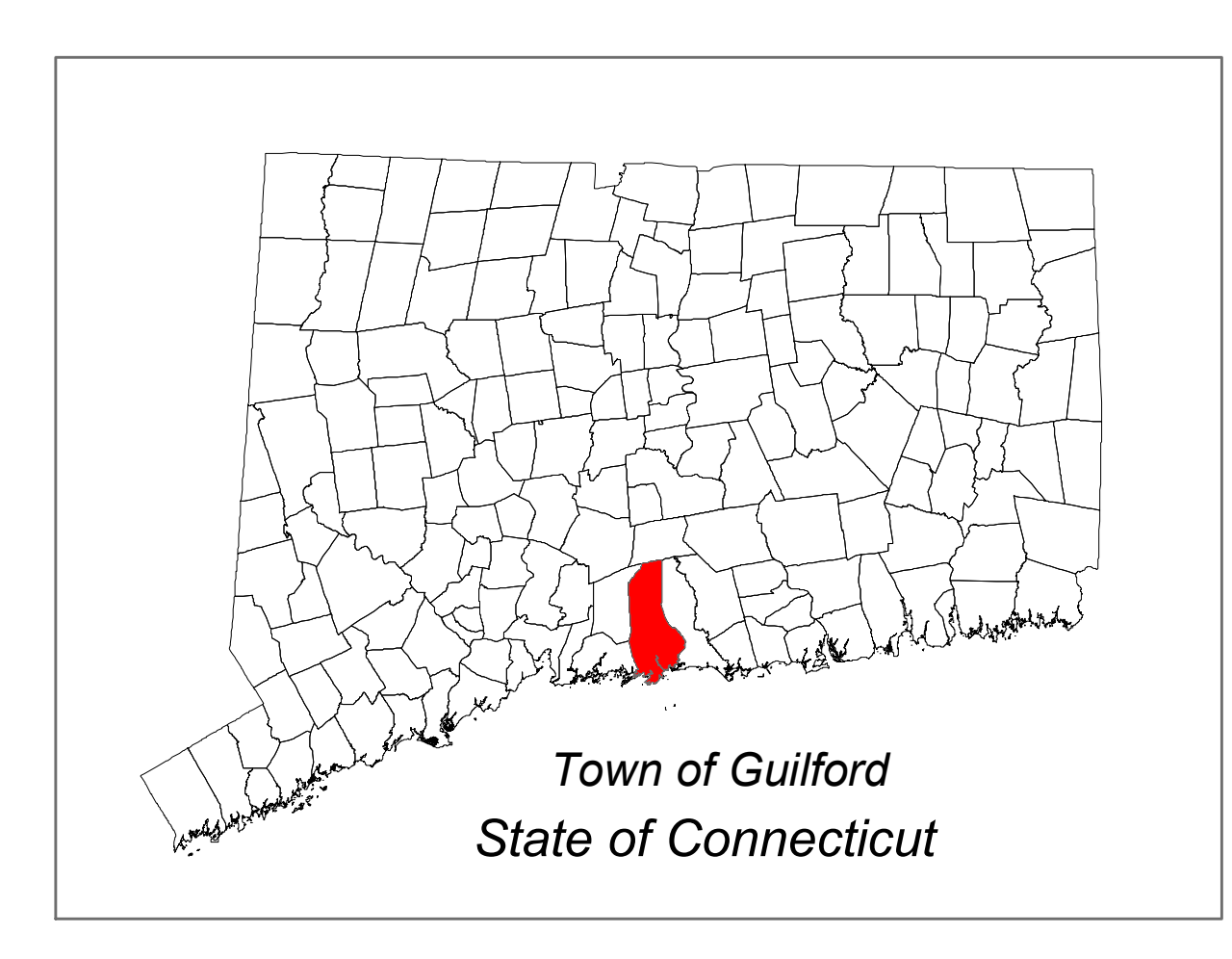
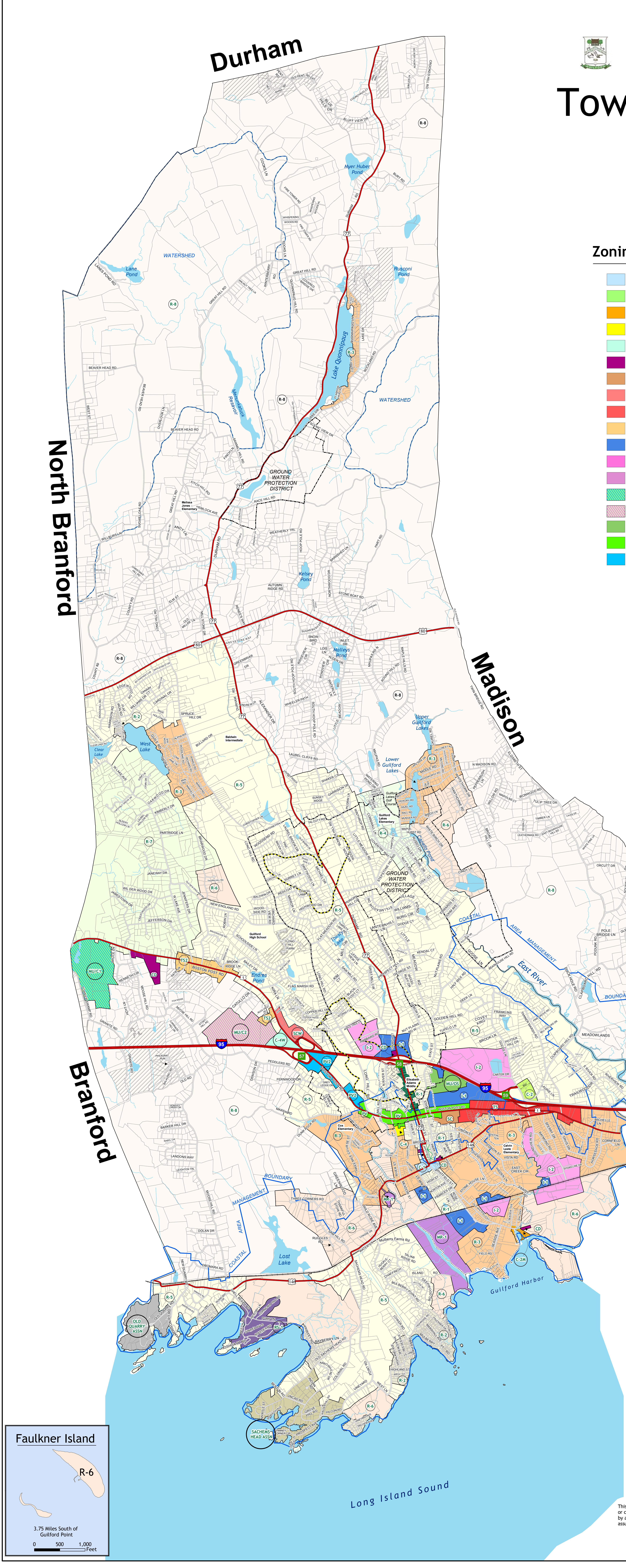
Approved By : \_\_\_\_\_

#### Zoning Legend and Classifications

	C-1	Commercial		R-1	Residential
	C-2			R-2	
	C-2M			R-3	
	C-4			R-4	
	C-4W			R-5	
	CD			R-6	
	SC			R-7	
	SCW			R-8	
	TS			RS-1	
	TS2			SACHEMS HEAD ASSN	
	I-1		OLD QUARRY ASSN		
	I-2				
	MR-1				
	MU/C1	Shopping Center			
	MU/C2	Service Center West			
	MU/OS	Transitional and Service District			
	PV	Industrial			
	PV2	Marine Recreational			
		Mixed Use/Conservation			
		Mixed Use/Open Space			
		Post Road Village Districts			

#### Legend

- Coastal Area Management Boundary
- Watershed
- Ground Water Protection District
- Approved Level "A" Aquifer Protection Area
- Parcels
- Guilford Town Center
- Railroad
- Water Features
- Church Street Village District
- PRD District
- Town Green
- Exit Numbers



This map is for planning purposes only. It is not for legal description or conveyances. All information is subject to verification by any user. The Town of Guilford and its mapping contractors assume no legal responsibility for the information contained herein.

Date: March 2010

NEW ENGLAND  
GEOSYSTEMS  
1200 Boston Post Rd  
Suite 208  
Guilford, CT 06437  
203-404-7729  
www.ne-gis.com