



Vanasse Hangen Brustlin, Inc.

54 Tuttle Place
Middletown, Connecticut 06457
Telephone 860 632-1500
FAX 860 632-7879
www.vhb.com

Memorandum

To: Lucia Chiochio, Esq.
CUDDY &
FEDER LLP
ATTORNEYS AT LAW
445 Hamilton Avenue, 14th Floor
White Plains, New York 10601

Date: December 17, 2010

Project No.: 41502.06

From: Michael A. Koperwhats

Re: Proposed New Cingular
Wireless PCS, LLC
Wireless Telecommunications Facility
"Leaf-Off" Balloon Float
Falls Village
8 Barnes Road
Canaan, Connecticut

New Cingular Wireless PCS, LLC ("AT&T"), currently seeks approval from the Connecticut Siting Council for a Certificate of Environmental Compatibility and Public Need for the construction of a wireless telecommunications facility ("Facility") to be located on property at 8 Barnes Road in the Town of Canaan, Connecticut. The proposed Facility would include the installation of a 150-foot tall monopole with associated ground equipment to be located within a fence-enclosed compound at the base of the tower structure.

Vanasse Hangen Brustlin (VHB), Inc. conducted an evaluation of the potential viewshed associated with the proposed Facility in August of 2010 which was subsequently submitted to the Connecticut Siting Council as part of AT&T's application documentation (Docket No. 409). In order to further assess potential visibility during "leaf-off" conditions, AT&T requested that VHB conduct an additional evaluation once the leaves had fallen of the deciduous vegetation contained within the study area ("Study Area"), defined herein as a two-mile radius surrounding the proposed Facility. VHB conducted a publically-noticed balloon float on November 12, 2010. The balloon float consisted of raising and maintaining an approximate four-foot diameter, helium-filled weather balloon at the proposed project area at a height of 150 above ground level (AGL). Weather conditions during the balloon float, included sunny skies, calm winds and a temperature of approximately 55 degrees Fahrenheit. Once the balloon was secured, VHB staff conducted a drive-by reconnaissance along the roads within the Study Area with an emphasis on publically-accessible locations previously identified as areas of potential seasonal visibility in VHB's *Visual Resource Evaluation Report* (August 2010). During the November 2010 float, the balloon was photographed from representative vantage points to document the actual view towards the proposed Facility. The locations of the photos are described in the table below:

View	Location	Orientation	Dist. To Site	Visibility
1	Barnes Road North of Route 7	Southeast	± 0.53-Mile	"Leaf-Off"
2	Barnes Road North of Route 7	Southeast	± 0.53-Mile	"Leaf-Off"
3	Northwest Corner of South Canaan Meeting House Property (rear yard area along Barnes Road)	Southeast	± 0.51-Mile	Year-Round
4	Southwest Corner of South Canaan Meeting House Building (rear yard area)	Southeast	± 0.49-Mile	Non-Visible
5	South Canaan Meeting House adjacent to storage shed	Southeast	± 0.50-Mile	Year-Round
6	South Canaan Meeting House Property near southern property line	Southeast	± 0.49-Mile	Non-Visible
7	Barnes Road At Route 63 (in front of South Canaan Meeting House)	Southeast	± 0.48-Mile	Non-Visible
8	Route 63 at Driveway to South Canaan Meeting House	Southeast	± 0.47-Mile	Non-Visible
9	Route 63 South of Barnes Road	Southeast	± 0.39-Mile	Year-Round
10	Kellogg Road south of Route 7	Northeast	± 1.18-Miles	"Leaf-Off"
11	Route 126	Northeast	± 0.92-Mile	"Leaf-Off"
12	Route 126	Northwest	± 0.63-Mile	"Leaf-Off"
13	Kellogg Road at Holabird House	Northeast	± 1.09-Miles	Non-Visible

Photographic simulations were generated for the representative locations where the balloon was visible during the in-field activities. The photographic simulations portray a scaled rendering of the proposed Facility from these locations, with three wireless service providers represented. Using field data, site plan information and 3-dimension (3D) modeling software, a spatially referenced model of the site area was generated. Geographic coordinates (latitude and longitude) were collected in the field for all of the photograph locations via GPS and later used to generate virtual camera positions within the spatial 3D model. Photo simulations were then created using a combination of renderings generated in the 3D model and photo rendering software programs. The balloon was included in the photographs to provide a visual marker and to cross-reference the height and proportions of the proposed Facility. A map depicting the thirteen photographic locations and the corresponding photographic simulations are attached to this memo. A detailed map depicting the location of Views 1 through 8 is also included given the close proximity of these photographic points to one another.

Overall, potential year-round and seasonal (i.e. "leaf-off") visibility associated with the proposed Facility was consistent with observations made during VHB's August 2010 evaluation. The November 2010 balloon float provided VHB with the opportunity to generate "leaf-off" photographic simulations from several locations where foliage effectively obstructs such views during the spring/summer months, including the Barnes Road/Route 7/Route 63 intersection adjacent to the South Canaan Meeting House and select portions of the Route 126 traffic corridor in particular. Additional areas of year-round and seasonal visibility were also identified during the November 2010 balloon float. These areas include an approximate 0.95-mile segment of Route 126, mainly between Johnson Road and Music Mountain Road, where limited, intermittent seasonal views of the proposed Facility may be achieved (Views 11 and 12); a limited portion of Barnes Road just north of Route 7 where mostly obstructed seasonal views are anticipated (Views 1 and 2); and a limited portion of Kellogg Road south of Route 7 located approximately 1.18-miles to the southwest of the proposed Facility (View 10). VHB staff also evaluated potential visibility from the South Canaan Meeting House located approximately

0.50-mile from the proposed Facility and identified a small area of limited year-round visibility located in the rear portion of the parcel, adjacent to the western property boundary (approximately 100 feet to the west of the South Canaan Meeting House building) (Views 3 and 4). Potential views of the proposed Facility from other portions of the property are obstructed by topography and/or existing evergreen vegetation. These areas of year-round and "leaf-off" visibility have been incorporated into a revised viewshed map which is also attached hereto. VHB's initial viewshed modeling, presented in our August 2010 *Visual Resource Evaluation Report*, indicated that areas of year-round visibility associated with the proposed Facility would comprise approximately 513 acres within the Study Area. The newly incorporated areas of anticipated year-round visibility comprise less than 0.20-acre which would not increase the 513-acre total. Seasonal or "leaf-off" visibility increases from roughly 150 acres to approximately 165 acres as a result of observations made during the "leaf-off" balloon float. This increase is mainly attributable to an extension of potential seasonal views along portions of Route 126. As indicated above, such views would be intermittent as it may be possible to view the proposed Facility from within portions of the shaded areas that indicate potential seasonal visibility, but not necessarily from all locations within those shaded areas. It is important to note that the existing Connecticut Light and Power overhead electrical utility infrastructure would also be intermittently visible from this segment of Route 126.

Photographic Documentation and Simulations

Proposed Wireless Telecommunications Facility

Falls Village
8 Barnes Road
Canaan, CT

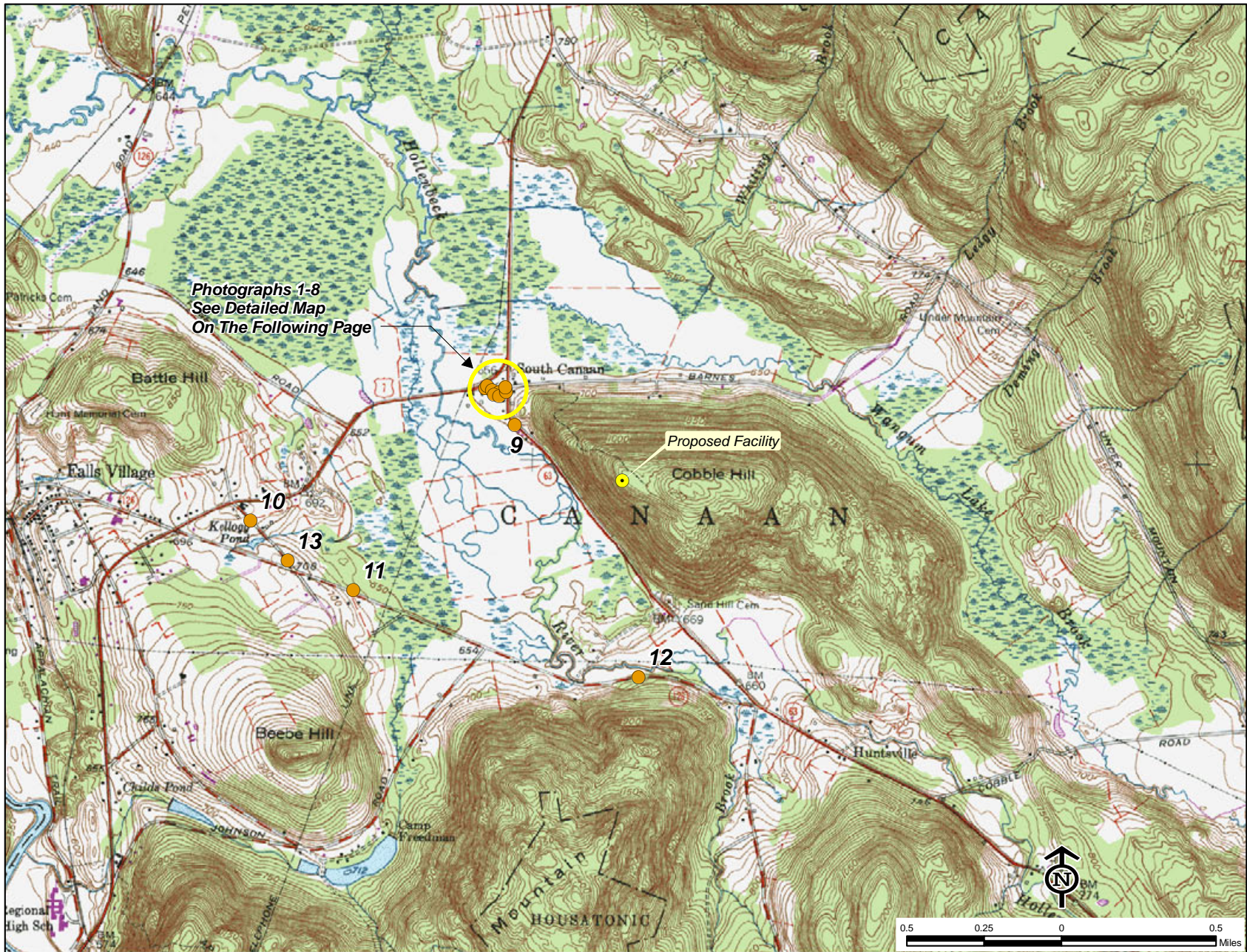
SUBMITTED TO:



SUBMITTED BY:



PHOTOLOG MAP



ct:\mddat\41502.06\graphics\FIGURES\41502.06_PHOTO_SIM_12-10.mxd



DETAILED AREA PHOTOLOG MAP



ct:\mddat\41502.06\graphics\FIGURES\41502.06_PHOTOSIM_12-10.mxd



PHOTOGRAPHIC DOCUMENTATION



ct:\mdda\41502.06\graphics\FIGURES\41502.06_PHOTOSIM_12-10.indd

VIEW	LOCATION	ORIENTATION	DISTANCE TO SITE	VISIBILITY
1	BARNES ROAD NORTH OF ROUTE 7	SOUTHEAST	0.53 MILE +/-	LEAF-OFF



ct:\mtdat\41502.06\graphics\FIGURES\41502.06_PHOTO\SIM_12-10.indd

VIEW	LOCATION	ORIENTATION	DISTANCE TO SITE	VISIBILITY
1	BARNES ROAD NORTH OF ROUTE 7	SOUTHEAST	0.53 MILE +/-	LEAF-OFF

PHOTOGRAPHIC DOCUMENTATION



VIEW	LOCATION	ORIENTATION	DISTANCE TO SITE	VISIBILITY
2	BARNES ROAD NORTH OF ROUTE 7	SOUTHEAST	0.53 MILE +/-	LEAF-OFF

ctm\dda\41502.06\graphics\FIGURES\41502.06_PHOTOSIM_12-10.indd



c:\mrt\data\41502_06\graphics\FIGURES\41502_06_PHOTO\SIM_12-10.indd

VIEW	LOCATION	ORIENTATION	DISTANCE TO SITE	VISIBILITY
2	BARNES ROAD NORTH OF ROUTE 7	SOUTHEAST	0.53 MILE +/-	LEAF-OFF

PHOTOGRAPHIC DOCUMENTATION



ct:\mdda\41502.06\graphics\FIGURES\41502.06_PHOTOSIM_12-10.indd

VIEW	LOCATION	ORIENTATION	DISTANCE TO SITE	VISIBILITY
3	NORTHWEST CORNER OF SOUTH CANAAN MEETING HOUSE PROPERTY	SOUTHEAST	0.51 MILE +/-	YEAR-ROUND



ctm\tdat\41502.06\graphics\FIGURES\41502.06_PHOTO\SIM_12-10.indd

VIEW	LOCATION	ORIENTATION	DISTANCE TO SITE	VISIBILITY
3	NORTHWEST CORNER OF SOUTH CANAAN MEETING HOUSE PROPERTY	SOUTHEAST	0.51 MILE +/-	YEAR-ROUND

PHOTOGRAPHIC DOCUMENTATION



VIEW	LOCATION	ORIENTATION	DISTANCE TO SITE	VISIBILITY
4	SOUTHWEST CORNER OF SOUTH CANAAN MEETING HOUSE BUILDING (REAR YARD AREA)	SOUTHEAST	0.49 MILE +/-	NON-VISIBLE

ct:\mdda\41502.06\graphics\FIGURES\41502.06_PHOTOSIM_12-10.indd

PHOTOGRAPHIC DOCUMENTATION



ct:\mdda\41502.06\graphics\FIGURES\41502.06_PHOTOSIM_12-10.indd

VIEW	LOCATION	ORIENTATION	DISTANCE TO SITE	VISIBILITY
5	SOUTH CANAAN MEETING HOUSE ADJACENT TO STORAGE SHED	SOUTHEAST	0.50 MILE +/-	YEAR-ROUND



ct:\mtdat\41502.06\graphics\FIGURES\41502.06_PHOTO\SIM_L_12-10.indd

VIEW	LOCATION	ORIENTATION	DISTANCE TO SITE	VISIBILITY
5	SOUTH CANAAN MEETING HOUSE ADJACENT TO STORAGE SHED	SOUTHEAST	0.50 MILE +/-	YEAR-ROUND

PHOTOGRAPHIC DOCUMENTATION



VIEW	LOCATION	ORIENTATION	DISTANCE TO SITE	VISIBILITY
6	SOUTH CANAAN MEETING HOUSE PROPERTY NEAR SOUTHERN PROPERTY LINE	SOUTHEAST	0.49 MILE +/-	NON-VISIBLE

PHOTOGRAPHIC DOCUMENTATION



ctm\mdda\41502.06\graphics\FIGURES\41502.06_PHOTO\SIM_12-10.indd

VIEW	LOCATION	ORIENTATION	DISTANCE TO SITE	VISIBILITY
7	BARNES ROAD AT ROUTE 63 (IN FRONT OF SOUTH CANAAN MEETING HOUSE)	SOUTHEAST	0.48 MILE +/-	NON-VISIBLE

PHOTOGRAPHIC DOCUMENTATION



ct:\mdda\41502.06\graphics\FIGURES\41502.06_PHOTO\SIM_12-10.indd

VIEW	LOCATION	ORIENTATION	DISTANCE TO SITE	VISIBILITY
8	ROUTE 63 AT DRIVEWAY TO SOUTH CANAAN MEETING HOUSE	SOUTHEAST	0.47 MILE +/-	NON-VISIBLE

PHOTOGRAPHIC DOCUMENTATION



VIEW	LOCATION	ORIENTATION	DISTANCE TO SITE	VISIBILITY
9	ROUTE 63 SOUTH OF BARNES ROAD	SOUTHEAST	0.39 MILE +/-	YEAR-ROUND

ct:\mdda\41502.06\graphics\FIGURES\41502.06_PHOTO\SIM_12-10.indd



ct:\mtdat\41502.06\graphics\FIGURES\41502.06_PHOTOSIM_L_12-10.indd

VIEW	LOCATION	ORIENTATION	DISTANCE TO SITE	VISIBILITY
9	ROUTE 63 SOUTH OF BARNES ROAD	SOUTHEAST	0.39 MILE +/-	YEAR-ROUND

PHOTOGRAPHIC DOCUMENTATION



VIEW	LOCATION	ORIENTATION	DISTANCE TO SITE	VISIBILITY
10	KELLOGG ROAD SOUTH OF ROUTE 7	NORTHEAST	1.18 MILES +/-	LEAF-OFF

ct:\mdda\41502.06\graphics\FIGURES\41502.06_PHOTO\SIM_12-10.indd



c:\mtdat\41502.06\graphics\FIGURES\41502.06_PHOTOSIM_12-10.indd

VIEW	LOCATION	ORIENTATION	DISTANCE TO SITE	VISIBILITY
10	KELLOGG ROAD SOUTH OF ROUTE 7	NORTHEAST	1.18 MILES +/-	LEAF-OFF

PHOTOGRAPHIC DOCUMENTATION



VIEW	LOCATION	ORIENTATION	DISTANCE TO SITE	VISIBILITY
11	ROUTE 126	NORTHEAST	0.92 MILE +/-	LEAF-OFF

PHOTOGRAPHIC SIMULATION



ctm10dta\41502.06\graphics\FIGURES\41502.06_PHOTO_SIM_12-10.indd

VIEW	LOCATION	ORIENTATION	DISTANCE TO SITE	VISIBILITY
11	ROUTE 126	NORTHEAST	0.92 MILE +/-	LEAF-OFF

PHOTOGRAPHIC DOCUMENTATION



VIEW	LOCATION	ORIENTATION	DISTANCE TO SITE	VISIBILITY
12	ROUTE 126	NORTHWEST	0.63 MILE +/-	SEASONAL

PHOTOGRAPHIC SIMULATION



ctm10dta\41502_06\graphics\FIGURES\41502_06_PHOTO SIM_L_12-10.indd

VIEW	LOCATION	ORIENTATION	DISTANCE TO SITE	VISIBILITY
12	ROUTE 126	NORTHWEST	0.63 MILE +/-	SEASONAL

PHOTOGRAPHIC DOCUMENTATION



ct:\mdda\41502.06\graphics\FIGURES\41502.06_PHOTO\SIM_12-10.indd

VIEW	LOCATION	ORIENTATION	DISTANCE TO SITE	VISIBILITY
13	KELLOGG ROAD AT HOLABIRD HOUSE	NORTHEAST	1.09 MILES +/-	NON-VISIBLE