

# | Photographic Documentation



J:\41479\_45\graphics\FIGURES\41479\_45\_Photos.mxd

VIEW	LOCATION	ORIENTATION	DISTANCE TO SITE	VISIBILITY
7	PACHAUG TRAIL	NORTHWEST	0.21 MILE +/-	NON-VISIBLE



# | Photographic Documentation

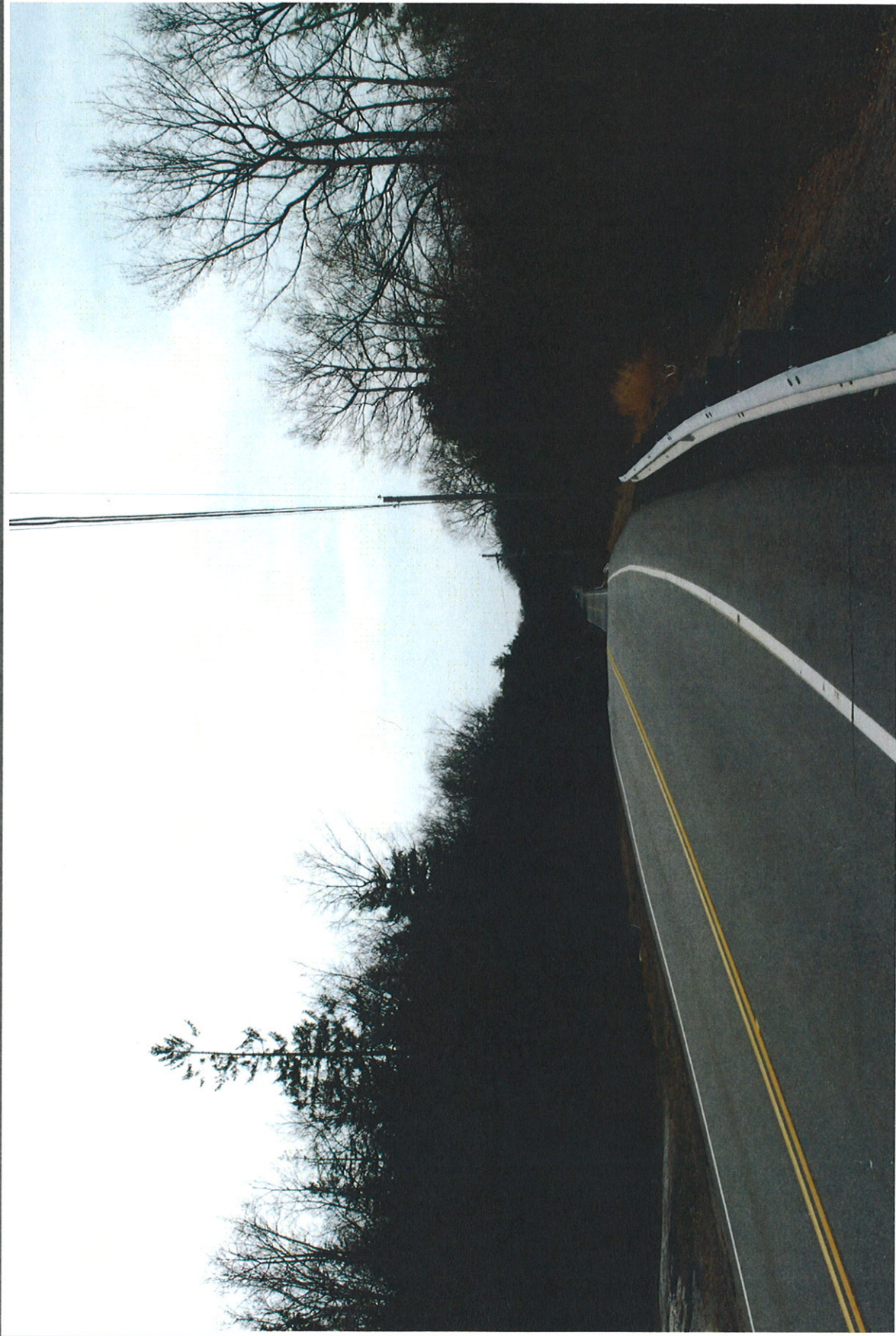


J:\1479\_45\graphics\FIGURES\1479\_45\_Photos.m

VIEW	LOCATION	ORIENTATION	DISTANCE TO SITE	VISIBILITY
8	ADJACENT TO #173 JAMES ROAD	SOUTHEAST	0.68 MILE +/-	NON-VISIBLE



# | Photographic Documentation



J:\1479\_45\graphics\FIGURES\1479\_45\_Photos.m

VIEW	LOCATION	ORIENTATION	DISTANCE TO SITE	VISIBILITY
9	ROUTE 138	SOUTHWEST	0.41 MILE +/-	NON-VISIBLE



# | Photographic Documentation



J:\1479\_45\graphics\FIGURES\1479\_45\_Photos.m

VIEW	LOCATION	ORIENTATION	DISTANCE TO SITE	VISIBILITY
10	BEACH POND	SOUTHWEST	1.83 MILES +/-	NON-VISIBLE



---

# Attachment B

## Viewshed Map



Viewshed Analysis  
Proposed Verizon Wireless  
Telecommunications Facility  
Voluntown  
422 Rockville Road  
Voluntown, Connecticut

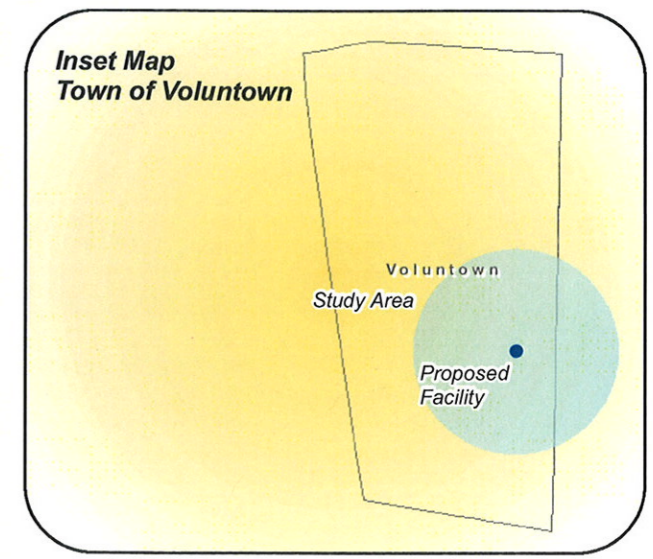
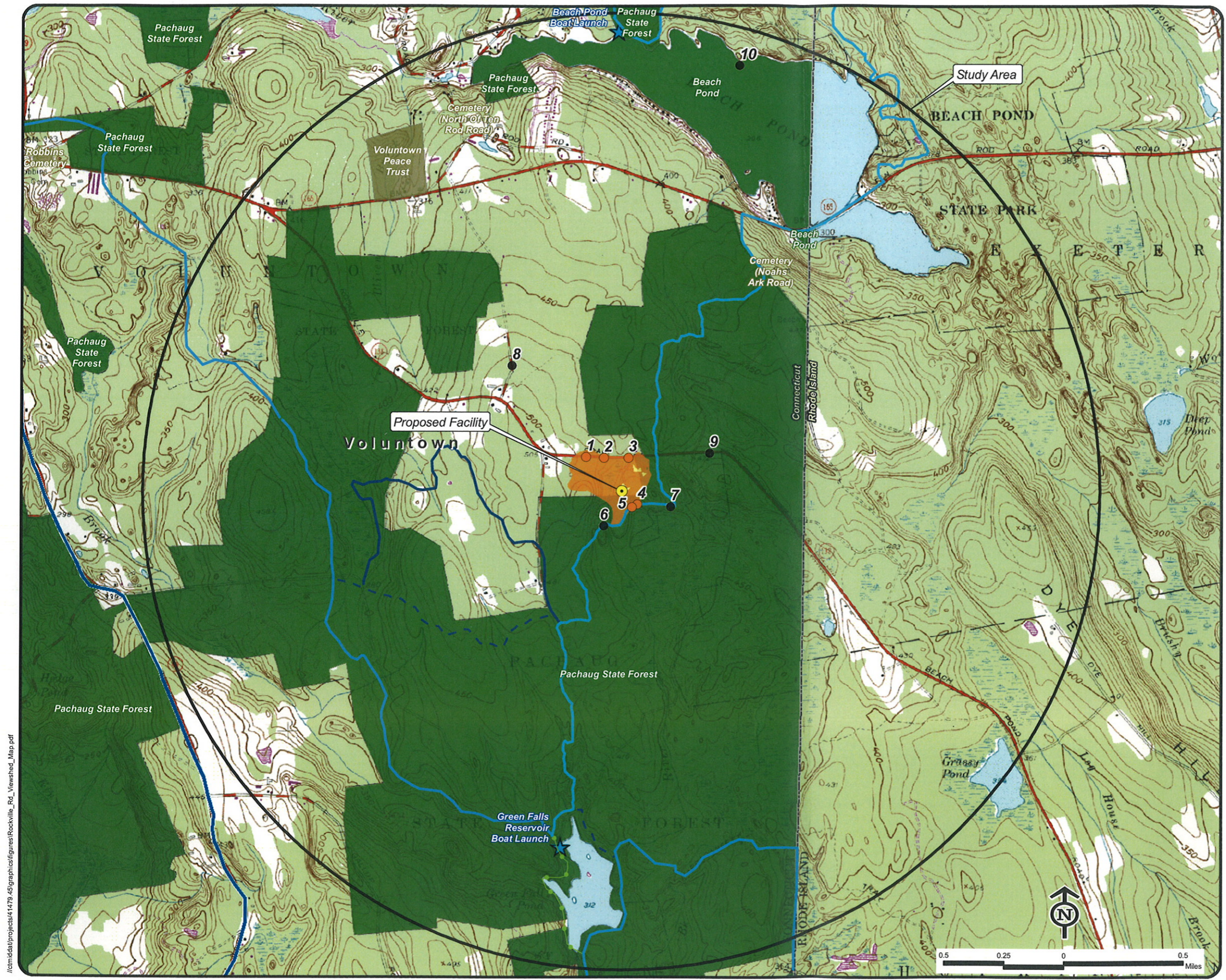
NOTE:  
 - Viewshed analysis conducted using ESRI's Spatial Analyst.  
 - Proposed Facility height is 160 feet.  
 - Existing tree canopy height estimated at 65 feet.  
 - Study Area is comprised of a two-mile radius surrounding the proposed facility and includes 8,042 acres of land.

DATA SOURCES:  
 - Digital elevation model (DEM) derived from USGS National Elevation Dataset (NED) with a resolution of approximately 30 meters produced by the USGS, 1925-1999  
 - Forest areas derived from 2006 digital orthophotos with 1-foot pixel resolution; digitized by VHB, 2009  
 - Base map comprised of Voluntown (1975) USGS Quadrangle Map  
 - Protected municipal and private open space properties and federal protected properties and data layers provided by CT DEP, 1997  
 - Protected CT DEP properties data layer provided by CTDEP, May 2007  
 - CT DEP boat launches data layer provided by CT DEP, 1994  
 - Scenic Roads layer derived from available State and Local listings.

Map Compiled August, 2010

**Legend**

- |  |                                     |
|--|-------------------------------------|
| Proposed Site Location                                       | CT DEP Protected Properties (2007)  |
| Photographs - April 6, 2010 and August 17, 2010              | State Forest                        |
| Balloon is not visible                                       | State Park                          |
| Balloon visible through trees                                | DEP Owned Waterbody                 |
| Seasonal Visibility (Approximately 38 acres)                 | State Park Scenic Reserve           |
| Year-Round Visibility (Approximately 2 acres)                | Historic Preserve                   |
| Protected Municipal and Private Open Space Properties (1997) | Natural Area Preserve               |
| Cemetery   | Fish Hatchery                       |
| Preservation   | Flood Control                       |
| Conservation   | Other                               |
| Existing Preserved Open Space                                | State Park Trail                    |
| Recreation   | Water Access                        |
| General Recreation   | Wildlife Area                       |
| School   | Wildlife Sanctuary                  |
| Uncategorized  | Federal Protected Properties (1997) |
|  | State Line                          |
|  | CT DEP Boat Launches (1994)         |
|  | Scenic Road (State and Local)       |
|  | Pachaug Trail (CT Blue Blaze)       |
|  | Nehantic Trail (CT Blue Blaze)      |
|  | Narragansett Trail (CT Blue Blaze)  |
|  | Laurel Loop Trail                   |
|  | Nehantic Pachaug Crossover Trail    |
|  | Green Fall Pond Trail               |



/c:/mtdat/projects/41479\_45/graphics/figures/Rockville\_Rd\_Viewshed\_Map.pdf