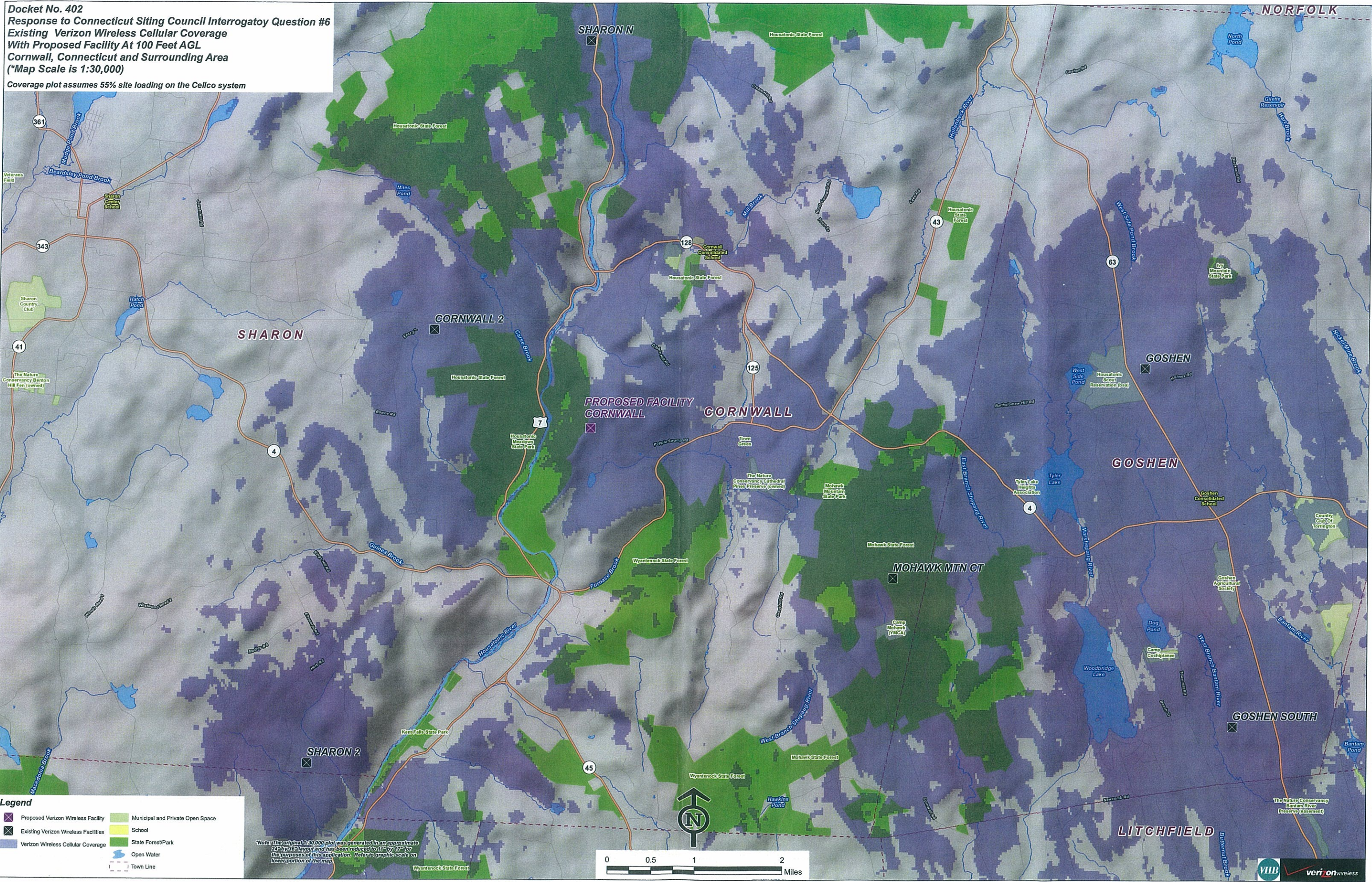


Docket No. 402
Response to Connecticut Siting Council Interrogatory Question #6
Existing Verizon Wireless Cellular Coverage
With Proposed Facility At 100 Feet AGL
Cornwall, Connecticut and Surrounding Area
(*Map Scale is 1:30,000)

Coverage plot assumes 55% site loading on the Cellco system



Legend

- ✖ Proposed Verizon Wireless Facility
- ✖ Existing Verizon Wireless Facilities
- Verizon Wireless Cellular Coverage
- Municipal and Private Open Space
- School
- State Forest/Park
- Open Water
- Town Line

Note: The original 1:30,000 plot was generated in an approximate 24" by 36" layout and has been reduced to 11" by 17" for the purposes of this application. Refer to graphic scale on lower portion of the map.

