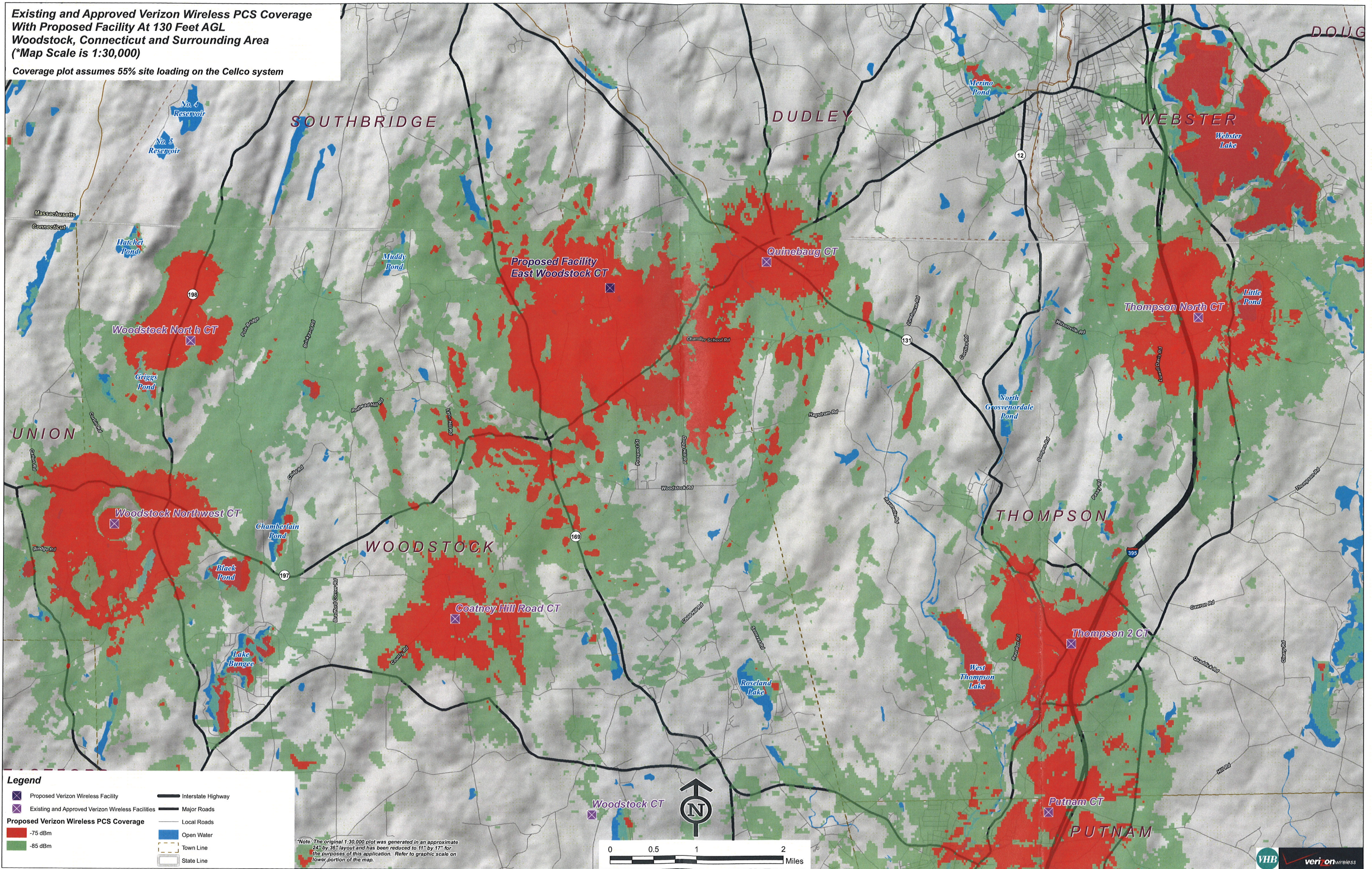


**Existing and Approved Verizon Wireless PCS Coverage
With Proposed Facility At 130 Feet AGL
Woodstock, Connecticut and Surrounding Area
(*Map Scale is 1:30,000)**

Coverage plot assumes 55% site loading on the Cellco system



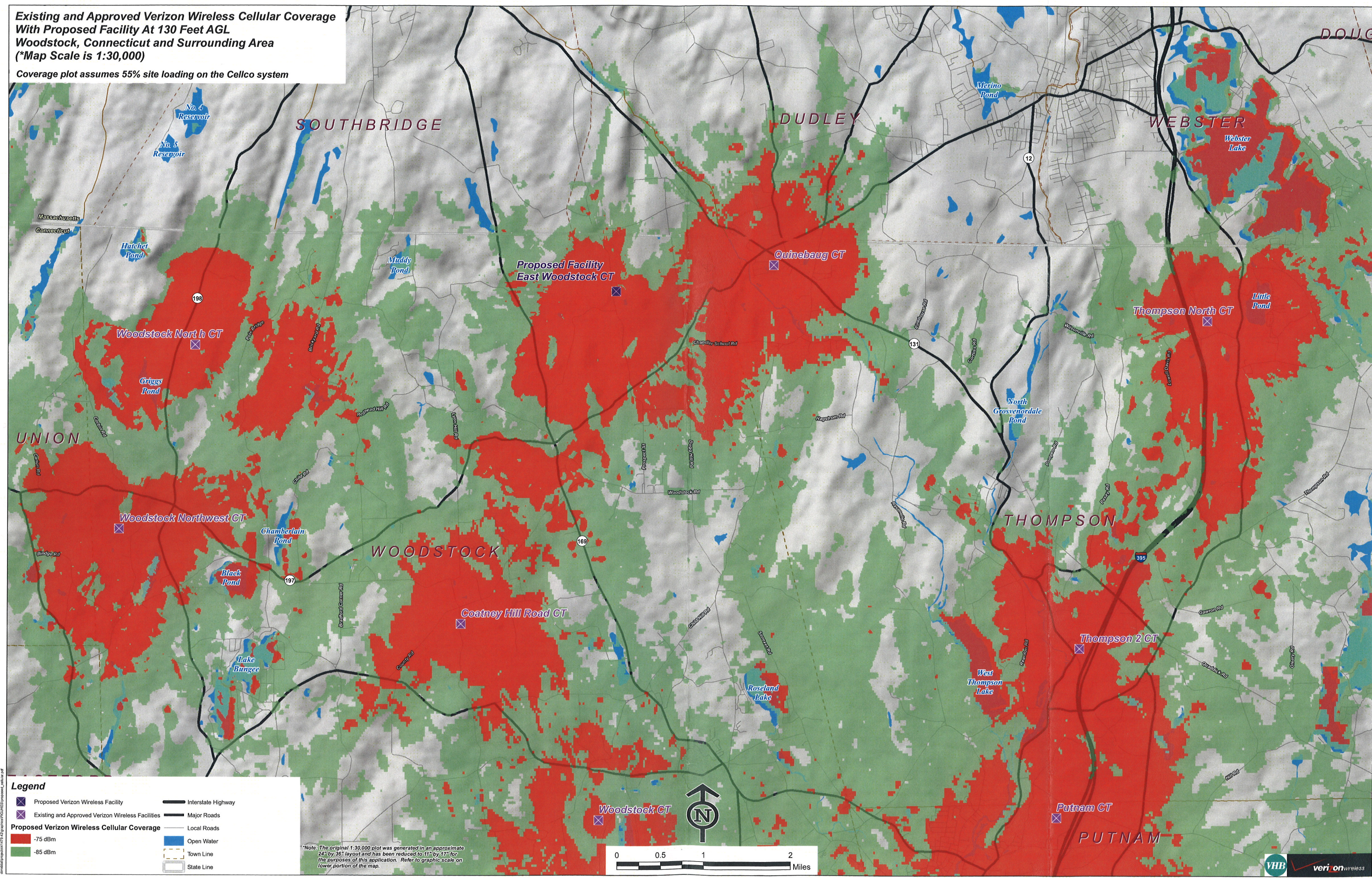
Legend

- Proposed Verizon Wireless Facility
- Existing and Approved Verizon Wireless Facilities
- Proposed Verizon Wireless PCS Coverage
- 75 dBm
- 85 dBm
- Interstate Highway
- Major Roads
- Local Roads
- Open Water
- Town Line
- State Line

*Note: The original 1:30,000 plot was generated in an approximate 24" by 36" layout and has been reduced to 11" by 17" for the purposes of this application. Refer to graphic scale on lower portion of the map.

**Existing and Approved Verizon Wireless Cellular Coverage
With Proposed Facility At 130 Feet AGL
Woodstock, Connecticut and Surrounding Area
(*Map Scale is 1:30,000)**

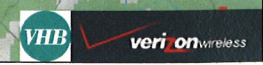
Coverage plot assumes 55% site loading on the Cellco system



Legend

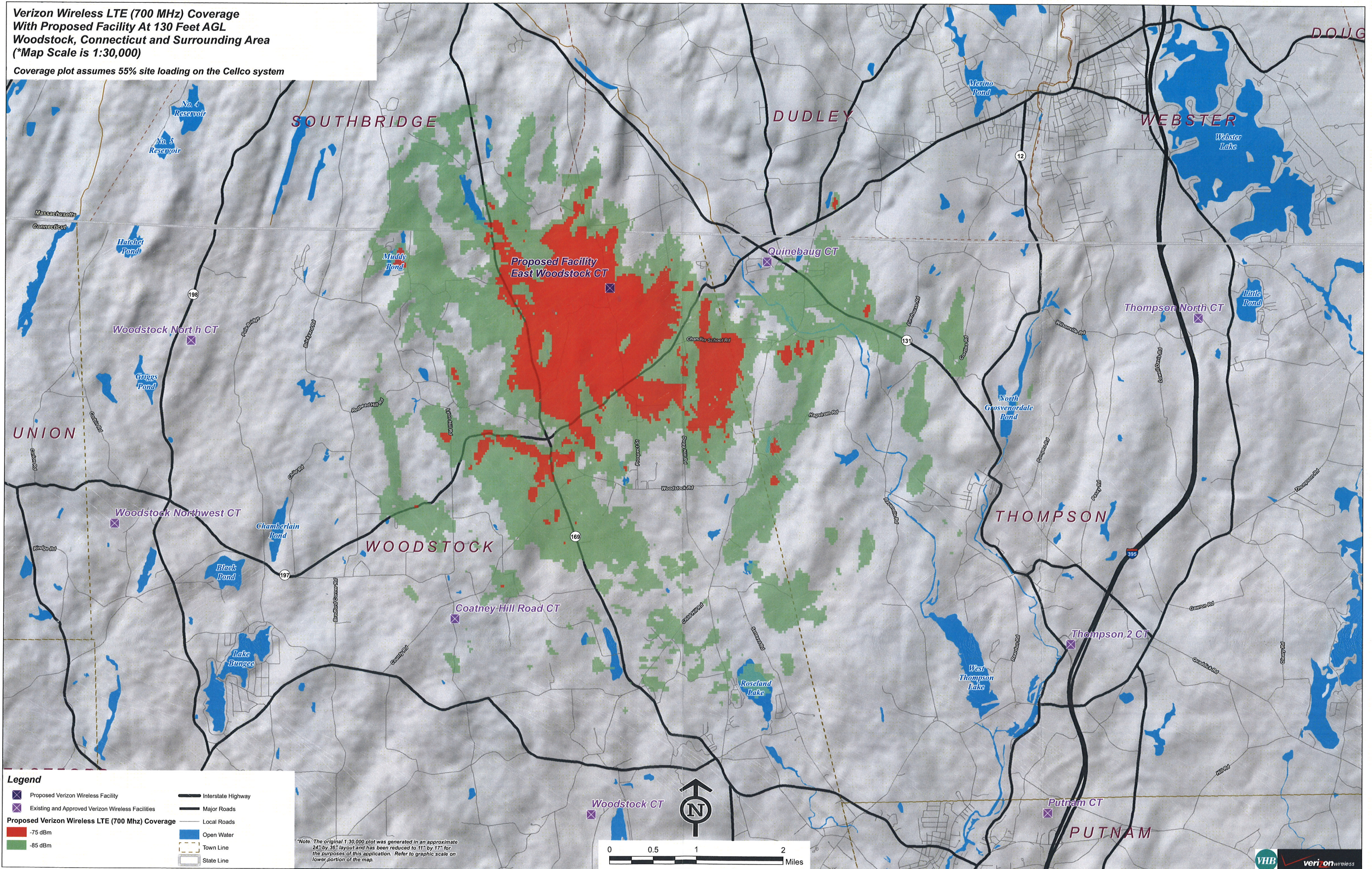
- X Proposed Verizon Wireless Facility
- X Existing and Approved Verizon Wireless Facilities
- █ Proposed Verizon Wireless Cellular Coverage -75 dBm
- █ -85 dBm
- Interstate Highway
- Major Roads
- Local Roads
- Open Water
- Town Line
- State Line

*Note: The original 1:30,000 plot was generated in an approximate 24" by 36" layout and has been reduced to 11" by 17" for the purposes of this application. Refer to graphic scale on lower portion of the map.



**Verizon Wireless LTE (700 MHz) Coverage
With Proposed Facility At 130 Feet AGL
Woodstock, Connecticut and Surrounding Area
(*Map Scale is 1:30,000)**

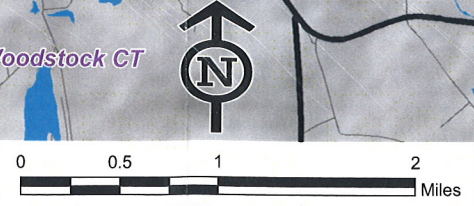
Coverage plot assumes 55% site loading on the Cellco system



Legend

- ✕ Proposed Verizon Wireless Facility
- ✕ Existing and Approved Verizon Wireless Facilities
- Proposed Verizon Wireless LTE (700 Mhz) Coverage -75 dBm
- Proposed Verizon Wireless LTE (700 Mhz) Coverage -85 dBm
- Interstate Highway
- Major Roads
- Local Roads
- Town Line
- State Line
- Open Water

*Note: The original 1:30,000 plot was generated in an approximate 24" by 36" layout and has been reduced to 11" by 17" for the purposes of this application. Refer to graphic scale on lower portion of the map.



Vertically Polarized, Log Periodic 63° / 16 dBd

LPA-80063/8CF

When ordering replace "___" with connector type.

Mechanical specifications

Length	2400 mm	94.5 in
Width	386 mm	15.2 in
Depth	335 mm	13.2 in
Depth with z-bracket	375 mm	14.8 in
4) Weight	17.2 kg	38.0 lbs
Wind Area		
Fore/Aft	0.93 m ²	10.0 ft ²
Side	0.80 m ²	8.7 ft ²
Rated Wind Velocity (Safety factor 2.0)		
	>276 km/hr	>172 mph
Wind Load @ 100 mph (161 km/hr)		
Fore/Aft	1357 N	305 lbs
Side	1197 N	269 lbs

Antenna consisting of aluminum alloy with brass feedlines covered by a UV safe fiberglass radome.

Mounting and Downtilting

Mounting brackets attach to a pipe diameter of Ø50-102 mm (2.0-4.0 in). If the lock-down brace is used, the maximum diameter is Ø88.9 mm (3.5 in)

Mounting Bracket & Downtilt Bracket Kit
#21699999

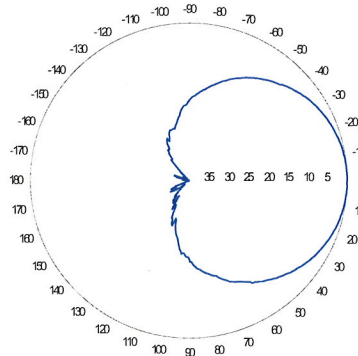
Electrical specifications

Frequency Range	806-960 MHz
Impedance	50Ω
3) Connector(s)	NE or E-DIN 1 port / center
1) VSWR	≤ 1.4:1
Polarization	Vertical
1) Gain	16 dBd
2) Power Rating	500 W
1) Half Power Angle	
H-Plane	63°
E-Plane	7°
1) Electrical Downtilt	0°
1) Null Fill	10%
Lightning Protection	Direct Ground

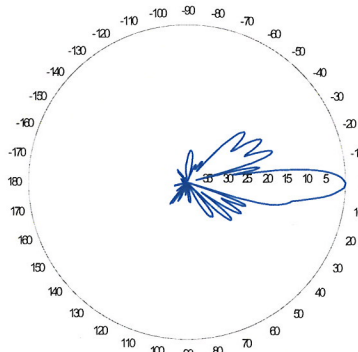
- 1) Typical values.
- 2) Power rating limited by connector only.
- 3) NE indicates an elongated N connector.
E-DIN indicates an elongated DIN connector.
- 4) The antenna weight listed above does not include the bracket weight.

Improvements to mechanical and/or electrical performance of the antenna may be made without notice.

Radiation pattern¹⁾



Horizontal



Vertical

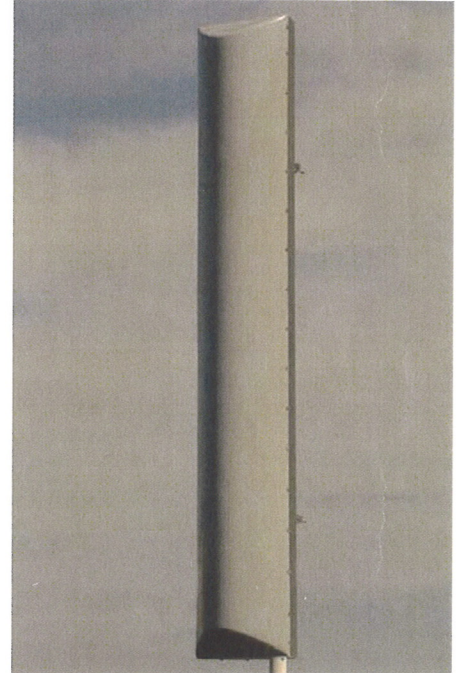
Featuring upper side lobe suppression.

Radiation patterns for all antennas are measured with the antenna mounted on a fiberglass pole.

Mounting on a metal pole will typically improve the Front-to-Back ratio.

CF Denotes a Center-Fed Connector.

806-960 MHz



Amphenol Antel's Exclusive 3T (True Transmission Line Technology) Antenna Design:

- True log-periodic design allows for superior front-to-side characteristics to minimize sector overlap.
- Unique feedline design eliminates the need for conventional solder joints in the signal path.
- A non-collinear system with access to every radiating element for broad bandwidth and superior performance.
- Air as insulation for virtually no internal signal loss.

This Amphenol Antel antenna is under a five-year limited warranty for repair or replacement.

Antenna available with center-fed connector only.



Revision Date: 7/5/07

Mechanical specifications

Length	2400 mm	94.5 in
Width	545 mm	21.3 in
Depth	350 mm	13.7 in
Depth with z-bracket	390 mm	15.4 in
Weight ⁴⁾	18.6 kg	41.0 lbs
Wind Area Fore/Aft ⁶⁾	0.75 m ²	8.1 ft ²
Wind Area Side ⁶⁾	0.96 m ²	10.3 ft ²
Max Wind Survivability ⁶⁾	>201 km/hr	>125 mph
Wind Load @ 100 mph (161 km/hr) ⁶⁾		
Fore/Aft	1245 N	280 lbf
Side	1250 N	281 lbf

Antenna consisting of aluminum alloy with brass feedlines covered by a gray, UV safe fiberglass radome. Aluminum reflector. RoHS compliant.

Mounting & Downtilting

Mounting hardware attaches to pipe diameter Ø50-102 mm; Ø2.0-4.0 in. If the lock-down brace is used, the maximum diameter is Ø88.9 mm (3.5 in).

Mounting & Downtilt Bracket Kit 21700000

Electrical specifications

Frequency Range	806-941 MHz
Impedance	50Ω
Connector ³⁾	NE or E-DIN Female 1 port / Center
VSWR ¹⁾	≤ 1.35:1
Polarization	Vertical
Gain ¹⁾	19 dBd
Power Rating ²⁾	500 W
Half Power Angle ¹⁾	
Horizontal Beamwidth	40°
Vertical Beamwidth	7°
Electrical downtilt ⁵⁾	1.25°
Null fill ¹⁾	5%
Lightning protection	Direct ground

1) Typical values.

2) Power rating limited by connector only.

3) NE indicates an elongated N connector.
E-DIN indicates an elongated DIN connector.

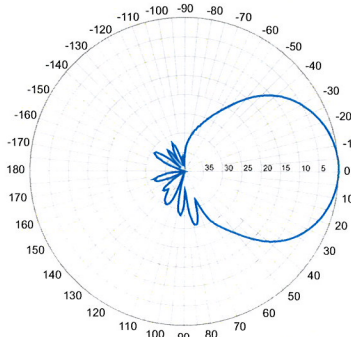
4) Antenna weight does not include brackets.

5) Add'l downtilts may be available. Check website for details.

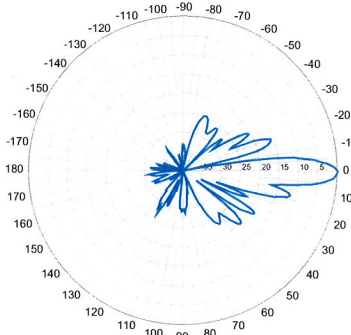
6) Values reflect installation with all three brackets utilized.

Improvements to mechanical and/or electrical performance of the antenna may be made without notice.

Radiation-pattern¹⁾



Horizontal



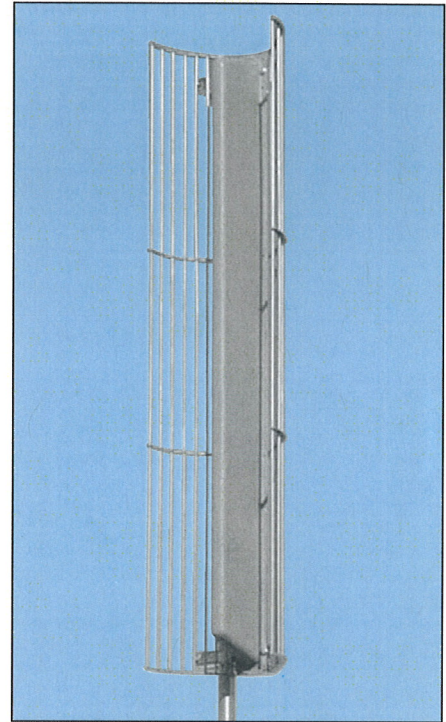
Vertical

Radiation patterns for all antennas are measured with the antenna mounted on a fiberglass pole.

Mounting on a metal pole will typically improve the front-to-back ratio.

LPA-4019

When ordering replace "___" with connector type.



Featuring our Exclusive
3T Technology™
Antenna Design:

- True log-periodic design allows for superior front-to-side characteristics to minimize sector overlap.
- Unique feedline design eliminates the need for conventional solder joints in the signal path.
- A non-collinear system with access to every radiating element for broad bandwidth and superior performance.
- Air as insulation for virtually no internal signal loss.

Warranty:

This antenna is under a five-year limited warranty for repair or replacement.

Revision Date: 08/18/08

806-941 MHz

Vertically Polarized, Log Periodic 63° / 18.5 dBi

LPA-185063/12CF __ 2°

When ordering replace " __ " with connector type.

Mechanical specifications

Length	1806 mm	71.1 in
Width	167 mm	6.6 in
Depth	148 mm	5.8 in
Depth with t-bracket	176 mm	6.9 in
4) Weight	6.1 kg	13.5 lbs
Wind Area		
Fore/Aft	0.30 m ²	3.3 ft ²
Side	0.27 m ²	2.9 ft ²
Rated Wind Velocity (Safety factor 2.0)	>224 km/hr	>139 mph
Wind Load @ 100 mph (161 km/hr)		
Fore/Aft	479 N	107.6 lbs
Side	434 N	97.6 lbs

Antenna consisting of aluminum alloy with brass feedlines covered by a UV safe fiberglass radome.

Mounting and Downtilting

Mounting brackets attach to a pipe diameter of Ø50-102 mm (2.0-4.0 in).

Mounting bracket kit #26799997
Downtilt bracket kit #26799999

The downtilt bracket kit includes the mounting bracket kit.

Electrical specifications

Frequency Range	1850-1990 MHz
Impedance	50Ω
3) Connector(s)	NE or E-DIN 1 port / center
1) VSWR	≤ 1.4:1
Polarization	Vertical
1) Gain	18.5 dBi
2) Power Rating	250 W
1) Half Power Angle	
H-Plane	63°
E-Plane	5°
1) Electrical Downtilt	2°
1) Null Fill	10%
Lightning Protection	Direct Ground

1) Typical values.

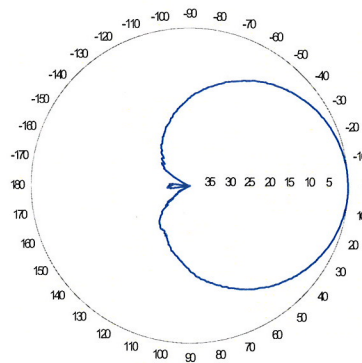
2) Power rating limited by connector only.

3) NE indicates an elongated N connector.
E-DIN indicates an elongated DIN connector.

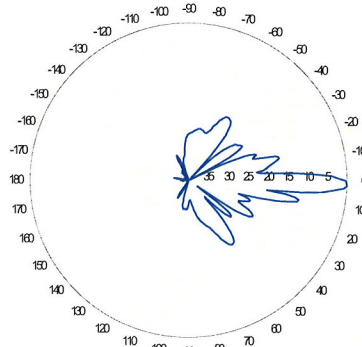
4) The antenna weight listed above does not include the bracket weight.

Improvements to mechanical and/or electrical performance of the antenna may be made without notice.

Radiation pattern¹⁾



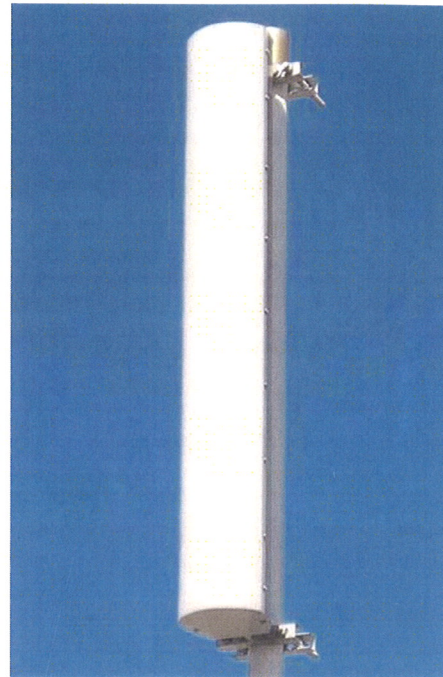
Horizontal



Vertical

Radiation patterns for all antennas are measured with the antenna mounted on a fiberglass pole.

Mounting on a metal pole will typically improve the Front-to-Back ratio.



**Amphenol Antel's
Exclusive 3T (True
Transmission Line
Technology)
Antenna Design:**

- True log-periodic design allows for superior front-to-side characteristics to minimize sector overlap.
- Unique feedline design eliminates the need for conventional solder joints in the signal path.
- A non-collinear system with access to every radiating element for broad bandwidth and superior performance.
- Air as insulation for virtually no internal signal loss.

This Amphenol Antel antenna is under a five-year limited warranty for repair or replacement.

Antenna available with center-fed connector only.

CF Denotes a Center-Fed Connector.

1850-1990 MHz



Revision Date: 7/12/07

Slant $\pm 45^\circ$ Dual Polarized FET Panel 63° / 14.5 dBd 696-900 MHz

Mechanical specifications

Length	1804 mm	71.0 in
Width	285 mm	11.2 in
Depth	114 mm	4.5 in
Depth with z-bracket	154 mm	6.1 in
Weight ⁴⁾	7.9 kg	17.0 lbs
Wind Area Fore/Aft	0.51 m ²	5.5 ft ²
Wind Area Side	0.21 m ²	2.2 ft ²
Max Wind Survivability	>201 km/hr	>125 mph
Wind Load @ 100 mph (161 km/hr)		
Fore/Aft	753 N	169 lbf
Side	351 N	79 lbf

Antenna consisting of aluminum alloy with brass feedlines covered by a UV safe fiber-glass radome.

Mounting & Downtilting

Mounting hardware attaches to pipe diameter $\varnothing 50$ -160 mm; $\varnothing 2.0$ -6.3 in

Mounting Bracket Kit	36210002
Downtilt Bracket Kit	36114003

Electrical specifications

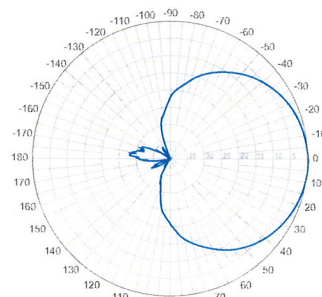
Frequency Range	696-900 MHz
Impedance	50 Ω
Connector ³⁾	NE or E-DIN Female 2 ports / Center
VSWR ¹⁾	$\leq 1.35:1$
Polarization	Slant $\pm 45^\circ$
Isolation Between Ports ¹⁾	< -25 dB
Gain ¹⁾	14.5 dBd 16.5 dBi
Power Rating ²⁾	500 W
Half Power Angle ¹⁾	
Horizontal Beamwidth	63 $^\circ$
Vertical Beamwidth	11 $^\circ$
Electrical downtilt ⁵⁾	0 $^\circ$
Null fill ¹⁾	5%
Lightning protection	Direct ground

Patented Dipole Design: U.S. Patent No. 6,608,600 B2

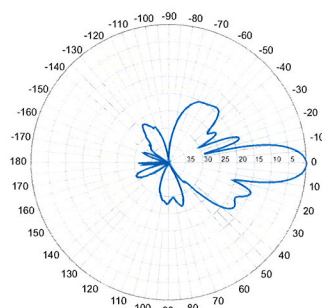
- 1) Typical values.
- 2) Power rating limited by connector only.
- 3) NE indicates an elongated N connector.
E-DIN indicates an elongated DIN connector.
- 4) Antenna weight does not include brackets.
- 5) Add'l downtilts may be available. Check website for details.

Improvements to mechanical and/or electrical performance of the antenna may be made without notice.

Radiation-pattern¹⁾
750 MHz

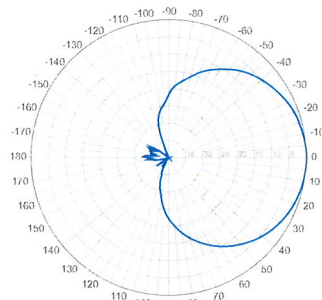


Horizontal

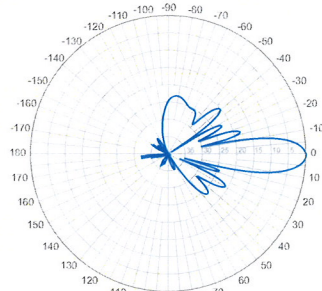


Vertical

850 MHz



Horizontal

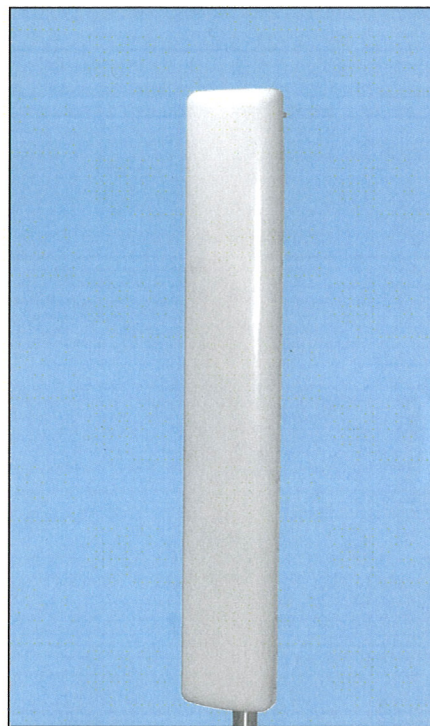


Vertical

696-900 MHz

BXA-70063/6CF

When ordering replace "___" with connector type.



Featuring our Exclusive
3T Technology™
Antenna Design:

- Watercut brass feedline assembly for consistent performance.
- Unique feedline design eliminates the need for conventional solder joints in the signal path.
- A non-collinear system with access to every radiating element for broad bandwidth and superior performance.
- Air as insulation for virtually no internal signal loss.

Warranty:

This antenna is under a five-year limited warranty for repair or replacement.

Revision Date: 01/08/09