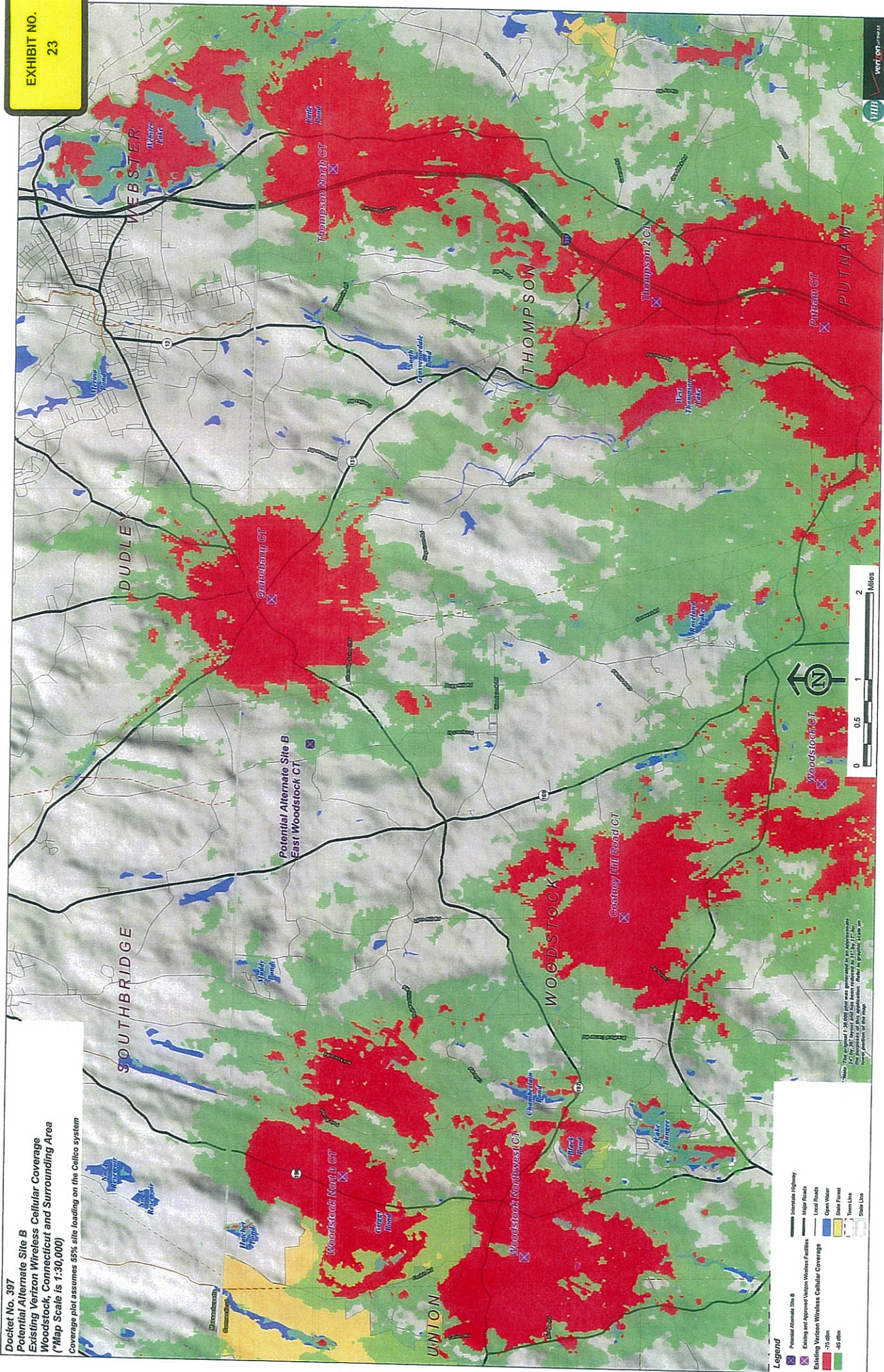


Docket No. 397
 Potential Alternate Site B
 Existing Verizon Wireless Cellular Coverage
 Woodstock, Connecticut and Surrounding Area
 (*Map Scale is 1:30,000)
 Coverage plot assumes 55% site loading on the Celco system



Legend

- Potential Alternate Site B
- Existing and Approved Verizon Wireless Facilities
- Existing Verizon Wireless Cellular Coverage
- 25 dBm
- 45 dBm
- Interstate Highway
- Major Roads
- Local Roads
- Open Water
- Shallow Inland
- Tidal Inland
- Shallow Lake

Note: This coverage plot was generated for an approximate 55% site loading on the Celco system. The amount of the approximation (55%) is subject to the hourly variation of the map.

