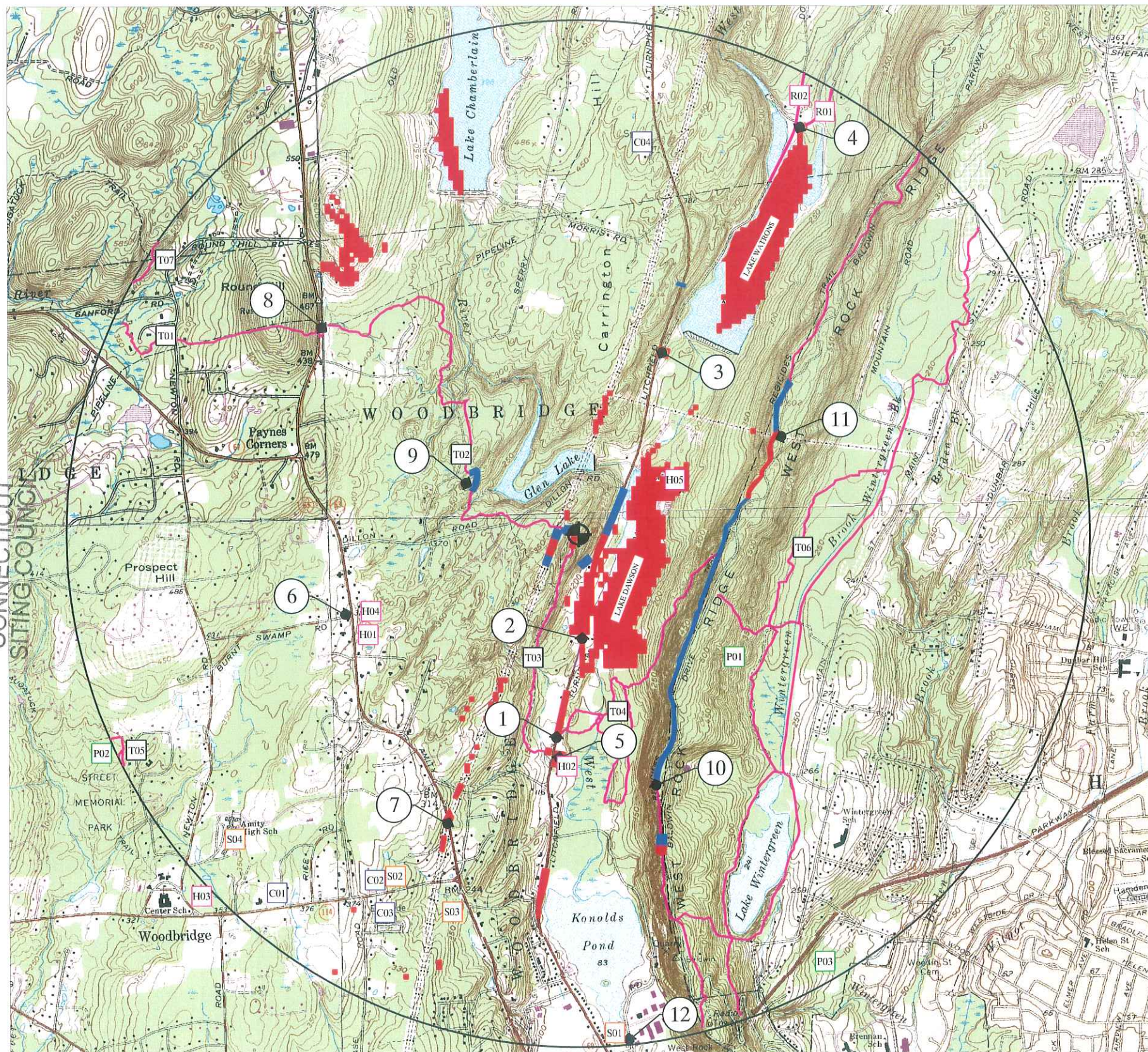


RECEIVED
JAN 12 2010

CONNECTICUT
SITING COUNCIL



NOTES:

1. Only visible areas are shown on the map utilizing the process described in note 2. The remainder of the map has been estimated to be nonvisible utilizing the process described in note 3.
2. Seasonal and year round areas of visibility were estimated from a field visual analysis within public R.O.W. and public properties. Areas shown on private property were interpolated from the field visual analysis.
3. Nonvisible areas were estimated from a computer generated topography & vegetation analysis and field verification of vegetation & building screening within public R.O.W and public properties. Vegetation limits were determined from 2004 aerial photos and is assumed to be 65' high. Verification of vegetation height, coverage, and type within private areas not visible from public R.O.W or public properties was not field verified.
4. Historical areas were determined from national and state historical registers.
5. Parks, schools, cemeteries, and churches were determined from street maps and field observations.
6. Scenic roads, if any, were determined from the CTDOT list of designated scenic roads and field observations.

Legend

	APPROXIMATE LOCATION OF PROPOSED MONOPOLE		COMPUTER SIMULATION PHOTOGRAPH LOCATION
	APPROXIMATE LIMIT OF SEASONAL TOWER VISIBILITY		APPROXIMATE LIMIT OF YEAR ROUND TOWER VISIBILITY
	CHURCH/CEMETERY		PARK
	HISTORICAL SITE		SCHOOL
TRAIL OR SCENIC ROAD			

Visibility by Acreage

ITEM	APPROXIMATE ACRES	% OF TOTAL AREA
2 MILE RADIUS AREA	8,053	100%
NOT VISIBLE DUE TO TOPOGRAPHY	4,188	52.0%
NOT VISIBLE DUE TO VEGETATION	3,614	44.9%
VISIBLE YEAR ROUND	227	2.8%
POTENTIAL SEASONAL VISIBILITY	24	0.3%

Distances from Photo Locations to Tower

PHOTO	DIST. (FT)	PHOTO	DIST. (FT)	PHOTO	DIST. (FT)	PHOTO	DIST. (FT)
01	4,225	04	9,540	07	6,560	10	6,690
02	2,170	05	4,630	08	6,790	11	4,650
03	4,140	06	5,090	09	2,550	12	10,460

2 MILE VIEWSHED ANALYSIS MAP
WOODBIDGE FARM #1
VISUAL IMPACT ASSESSMENT

Historic Sites:

- CASTLE DR. ANDREW HOUSE
- DARLING HOUSE
- WOODBIDGE GREEN HISTORIC DISTRICT
- WHEELER-BECHER HOUSE
- NEW ENGLAND CEMENT COMPANY KILN AND QUARRY

Parks:

- WEST ROCK RIDGE STATE PARK
- ALICE NEWTON STREET MEMORIAL PARK
- WEST ROCK PARK

Trails:

- BALDENS BROOK TRAIL
- REGIONAL WATER AUTHORITY TRAILS
- BISHOP WEST TRAILS
- BISHOP ESTATE/DARLING HOUSE TRAILS

Schools:

- CHILDREN'S GARDEN DAYCARE
- TRINITY COMMUNITY PRE-SCHOOL
- YELADIM CHILDCARE @ JEWISH COMMUNITY CENTER
- AMITY REGIONAL SENIOR HIGH SCHOOL

Church/Cemetery:

- ASSUMPTION CHURCH
- TRINITY EVANGELICAL FREE CHURCH
- MT. SINAI MEMORIAL CEMETERY
- SPERRY CEMETERY

Scenic Roads:

- BROOKS ROAD
- DOWNS ROAD

Visibility by Residence

STREET	RESIDENCES
LITCHFIELD TPKE	6 (Y), 1 (S)

(S) = SEASONAL VIEW
(Y) = YEAR ROUND VIEW

PREPARED FOR:



PREPARED BY:



MARCH 2009

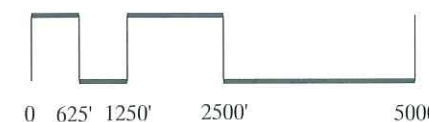


FIGURE VS-1