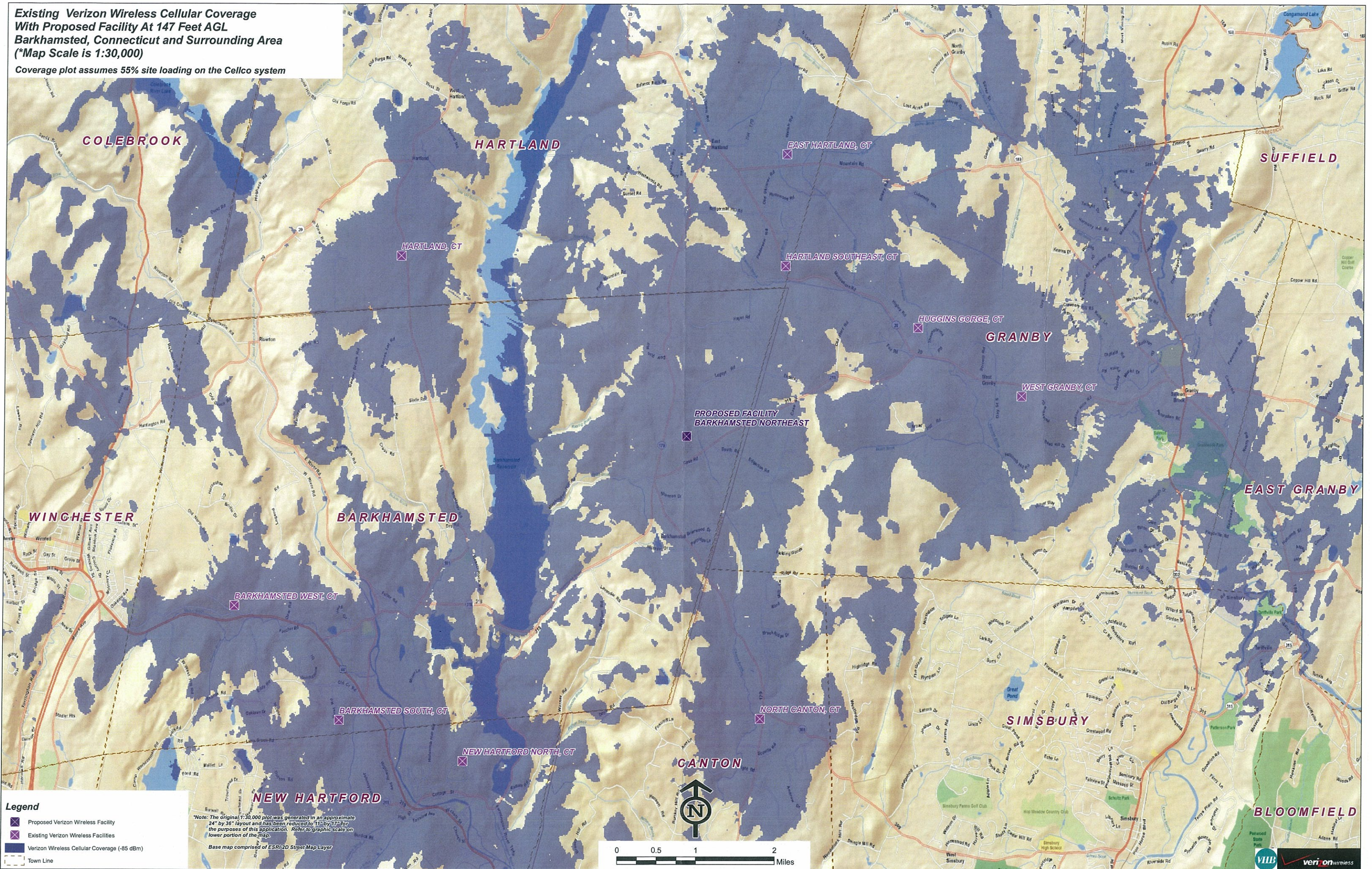


**Existing Verizon Wireless Cellular Coverage
With Proposed Facility At 147 Feet AGL
Barkhamsted, Connecticut and Surrounding Area
(*Map Scale is 1:30,000)**

Coverage plot assumes 55% site loading on the Cellco system



Legend

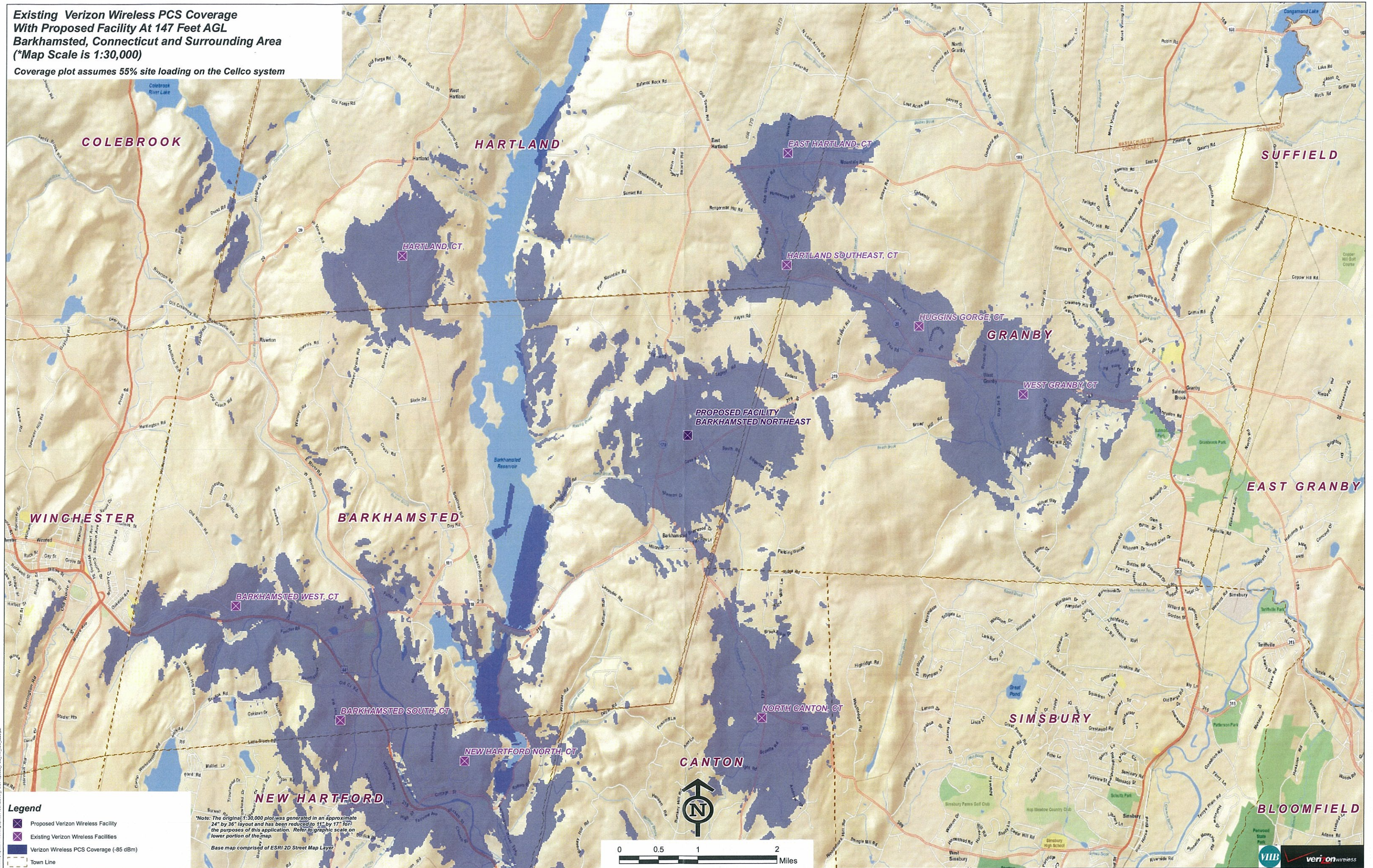
- X Proposed Verizon Wireless Facility
- X Existing Verizon Wireless Facilities
- Verizon Wireless Cellular Coverage (-85 dBm)
- Town Line

*Note: The original 1:30,000 plot was generated in an approximate 24" by 36" layout and has been reduced to 11" by 17" for the purposes of this application. Refer to graphic scale on lower portion of the map.
Base map comprised of ESRI 2D Street Map Layer



**Existing Verizon Wireless PCS Coverage
With Proposed Facility At 147 Feet AGL
Barkhamsted, Connecticut and Surrounding Area
(*Map Scale is 1:30,000)**

Coverage plot assumes 55% site loading on the Cellco system



- Legend**
- X Proposed Verizon Wireless Facility
 - X Existing Verizon Wireless Facilities
 - Verizon Wireless PCS Coverage (-85 dBm)
 - - - Town Line

**Note: The original 1:30,000 plot was generated in an approximate 24" by 36" layout and has been reduced to 11" by 17" for the purposes of this application. Refer to graphic scale on lower portion of the map.*

Base map comprised of ESRI 2D Street Map Layer

