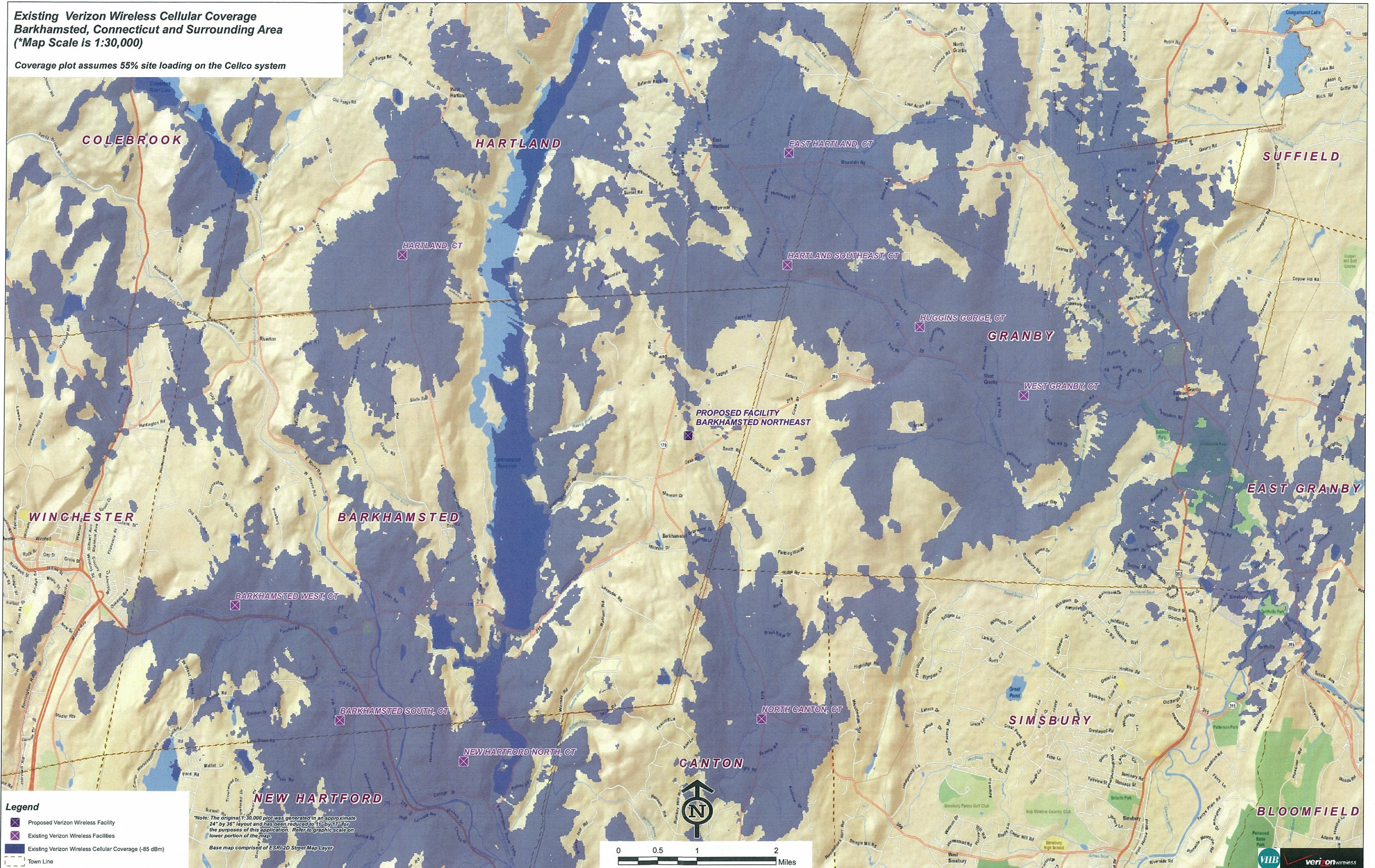


**Existing Verizon Wireless Cellular Coverage  
Barkhamsted, Connecticut and Surrounding Area  
(\*Map Scale is 1:30,000)**

Coverage plot assumes 55% site loading on the Cellco system

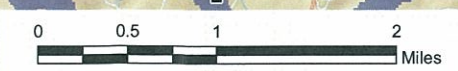


**Legend**

- X Proposed Verizon Wireless Facility
- X Existing Verizon Wireless Facilities
- Existing Verizon Wireless Cellular Coverage (-85 dBm)
- Town Line

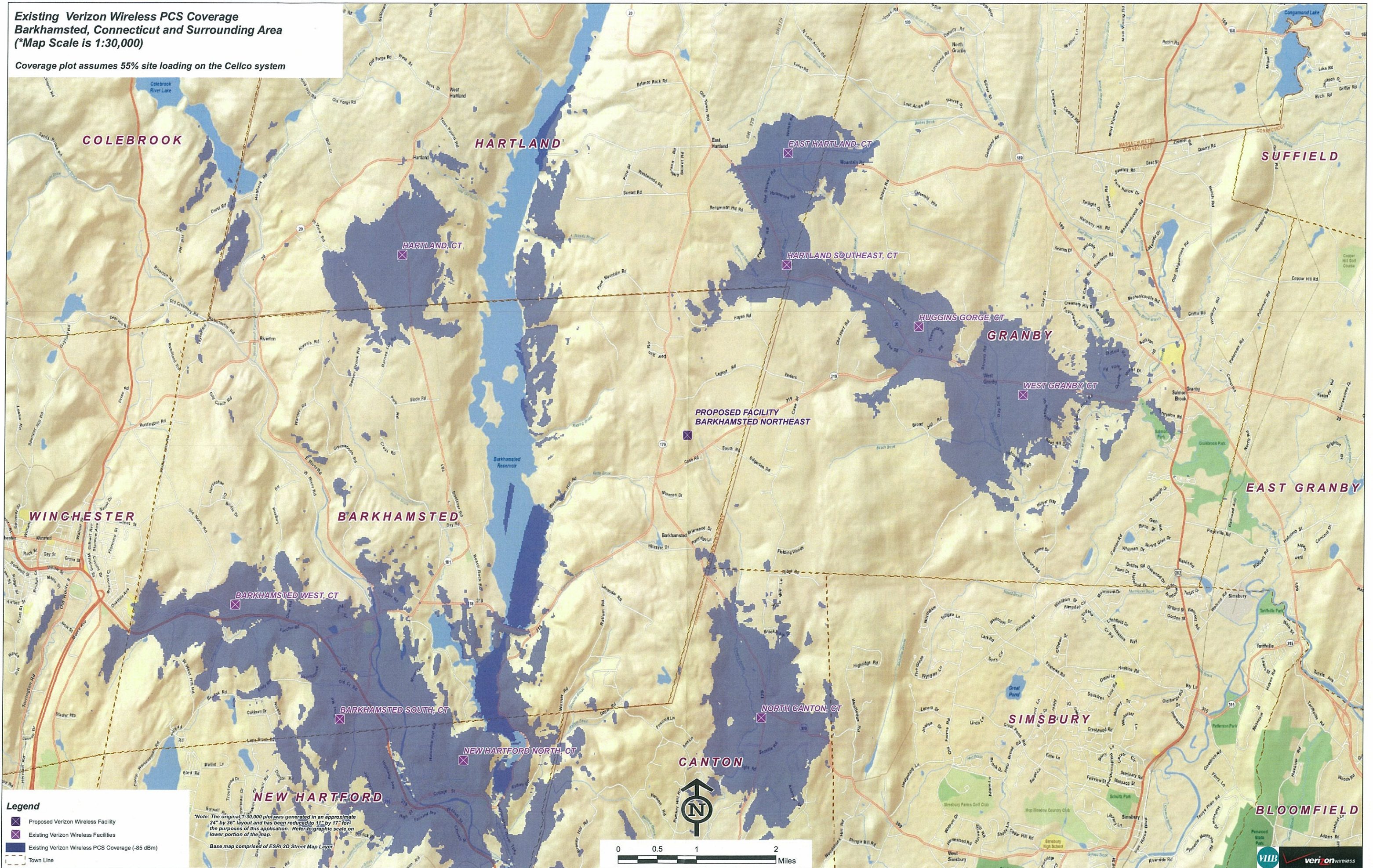
\*Note: The original 1:30,000 plot was generated in an approximate 24" by 36" layout and has been reduced to 11" by 17" for the purposes of this application. Refer to graphic scale on lower portion of the map.

Base map comprised of ESRI 2D Street Map Layer



**Existing Verizon Wireless PCS Coverage  
Barkhamsted, Connecticut and Surrounding Area  
(\*Map Scale is 1:30,000)**

Coverage plot assumes 55% site loading on the Cellco system



**Legend**

- Proposed Verizon Wireless Facility
- Existing Verizon Wireless Facilities
- Existing Verizon Wireless PCS Coverage (-85 dBm)
- Town Line

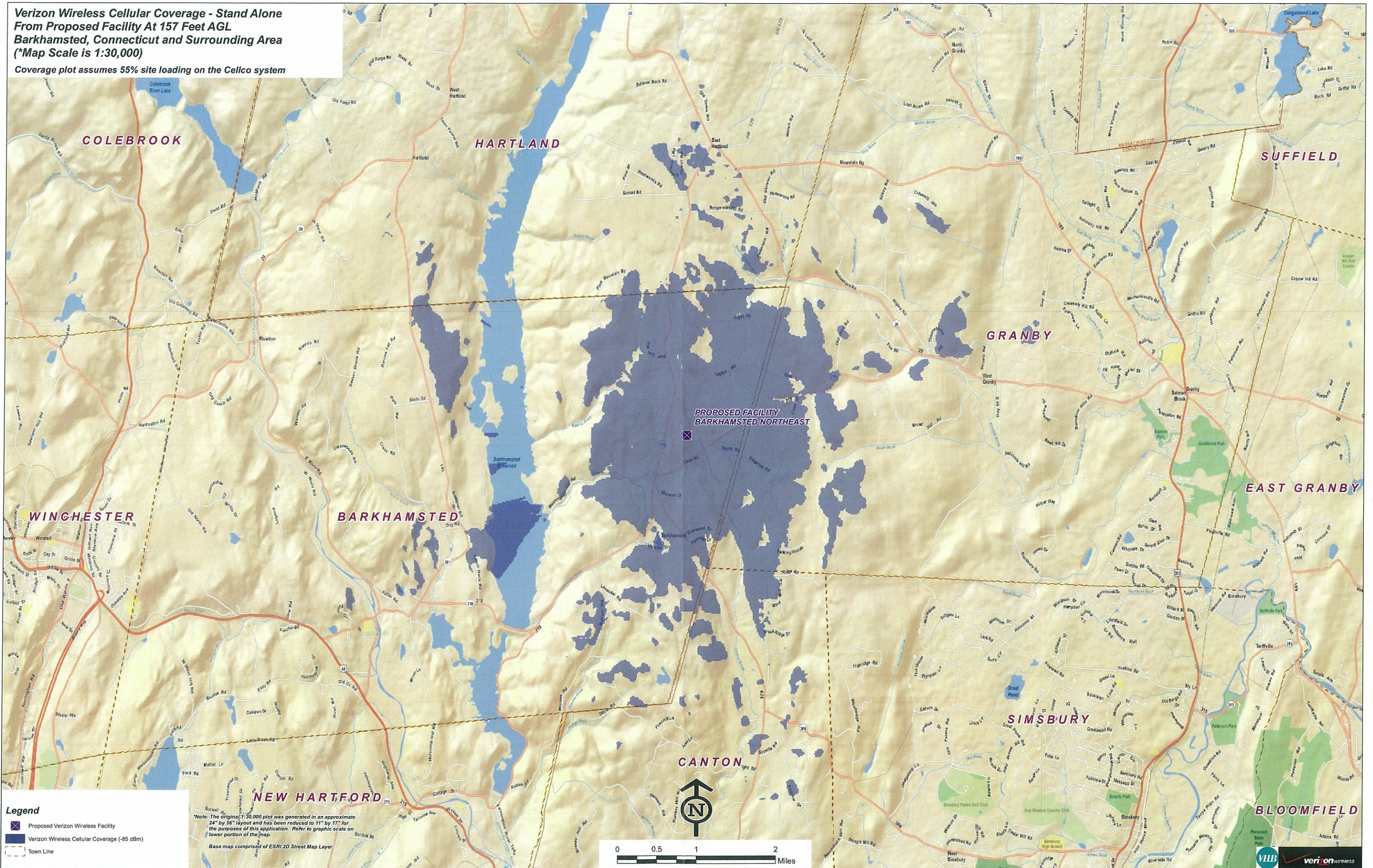
*Note: The original 1:30,000 plot was generated in an approximate 24" by 36" layout and has been reduced to 11" by 17" for the purposes of this application. Refer to graphic scale on lower portion of the map.*

Base map comprised of ESRI 2D Street Map Layer



**Verizon Wireless Cellular Coverage - Stand Alone  
From Proposed Facility At 157 Feet AGL  
Barkhamsted, Connecticut and Surrounding Area  
(\*Map Scale is 1:30,000)**

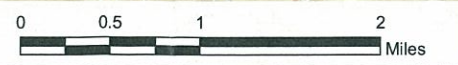
Coverage plot assumes 55% site loading on the Cellco system



- Legend**
- Proposed Verizon Wireless Facility
  - Verizon Wireless Cellular Coverage (-85 dBm)
  - Town Line

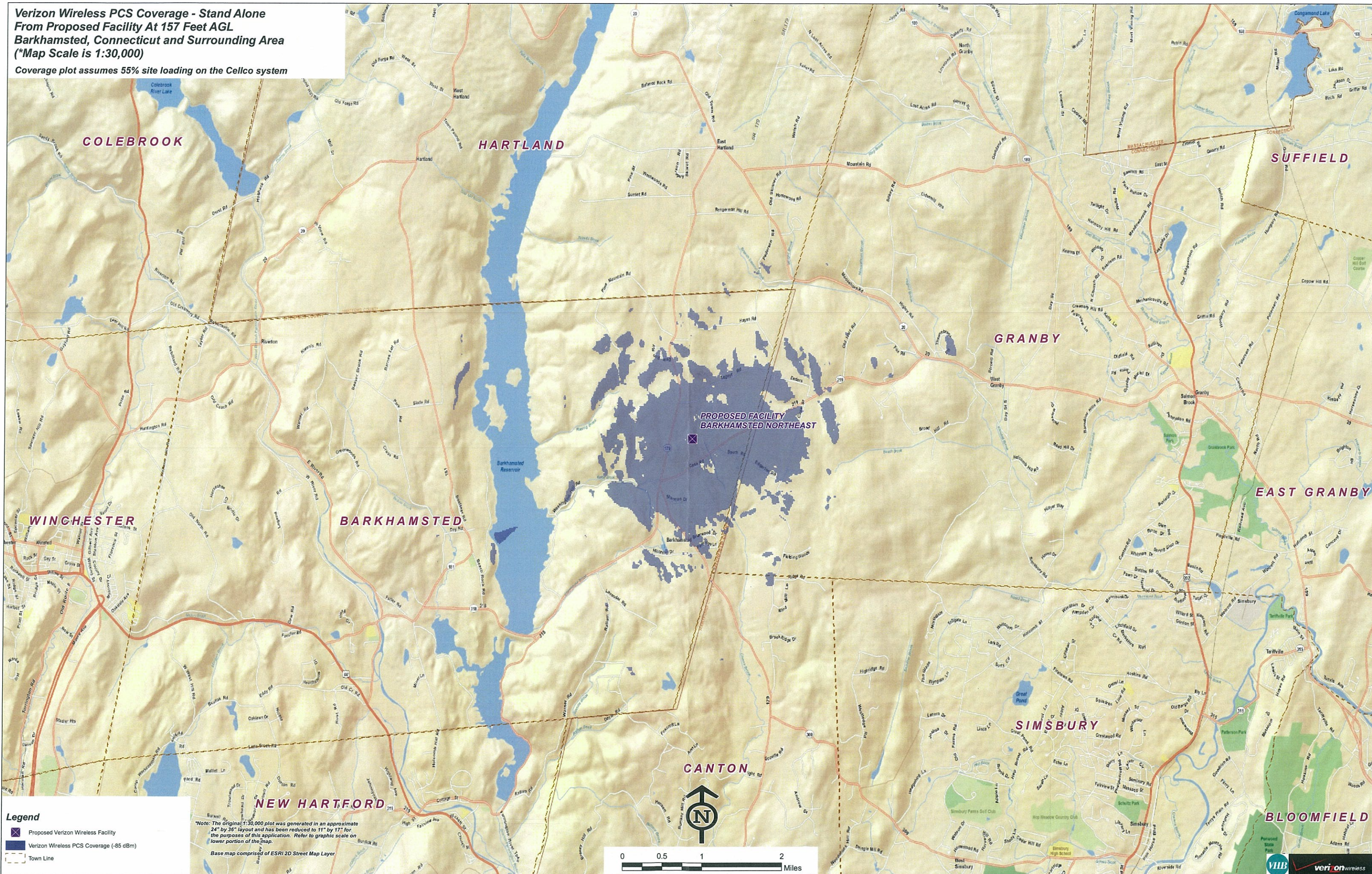
*Note: The original 1:30,000 plot was generated in an approximate 24" by 36" layout and has been reduced to 11" by 17" for the purposes of this application. Refer to graphic scale on lower portion of the map.*

Base map comprised of ESRI 2D Street Map Layer



**Verizon Wireless PCS Coverage - Stand Alone  
From Proposed Facility At 157 Feet AGL  
Barkhamsted, Connecticut and Surrounding Area  
(\*Map Scale is 1:30,000)**

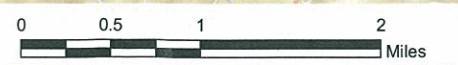
Coverage plot assumes 55% site loading on the Cellco system



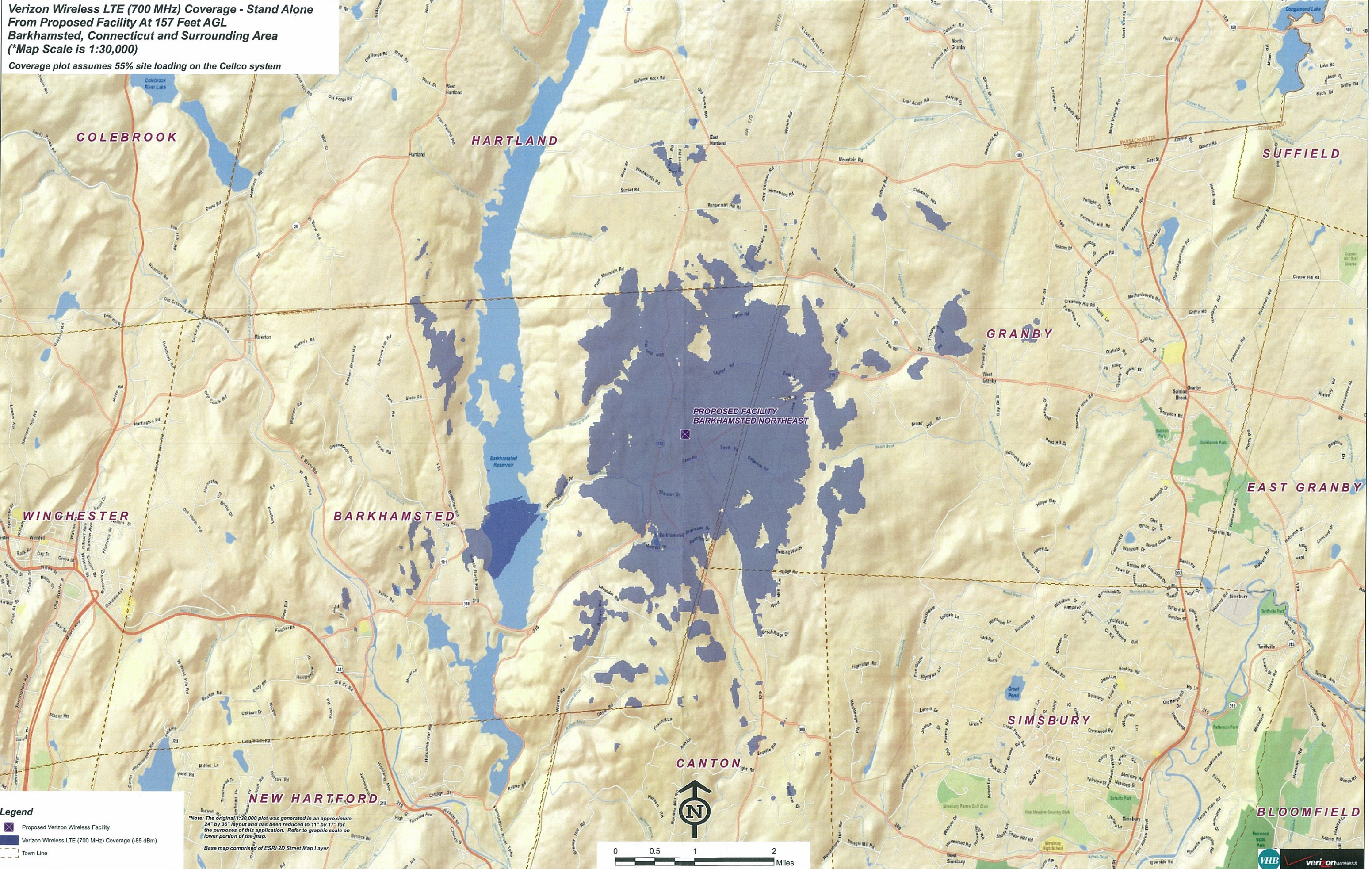
- Legend**
- Proposed Verizon Wireless Facility
  - Verizon Wireless PCS Coverage (-85 dBm)
  - Town Line

*Note: The original 1:30,000 plot was generated in an approximate 24" by 36" layout and has been reduced to 11" by 17" for the purposes of this application. Refer to graphic scale on lower portion of the map.*

Base map comprised of ESRI 2D Street Map Layer

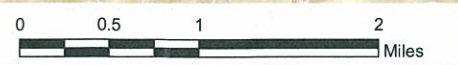


**Verizon Wireless LTE (700 MHz) Coverage - Stand Alone  
From Proposed Facility At 157 Feet AGL  
Barkhamsted, Connecticut and Surrounding Area  
(\*Map Scale is 1:30,000)**  
Coverage plot assumes 55% site loading on the Cellco system



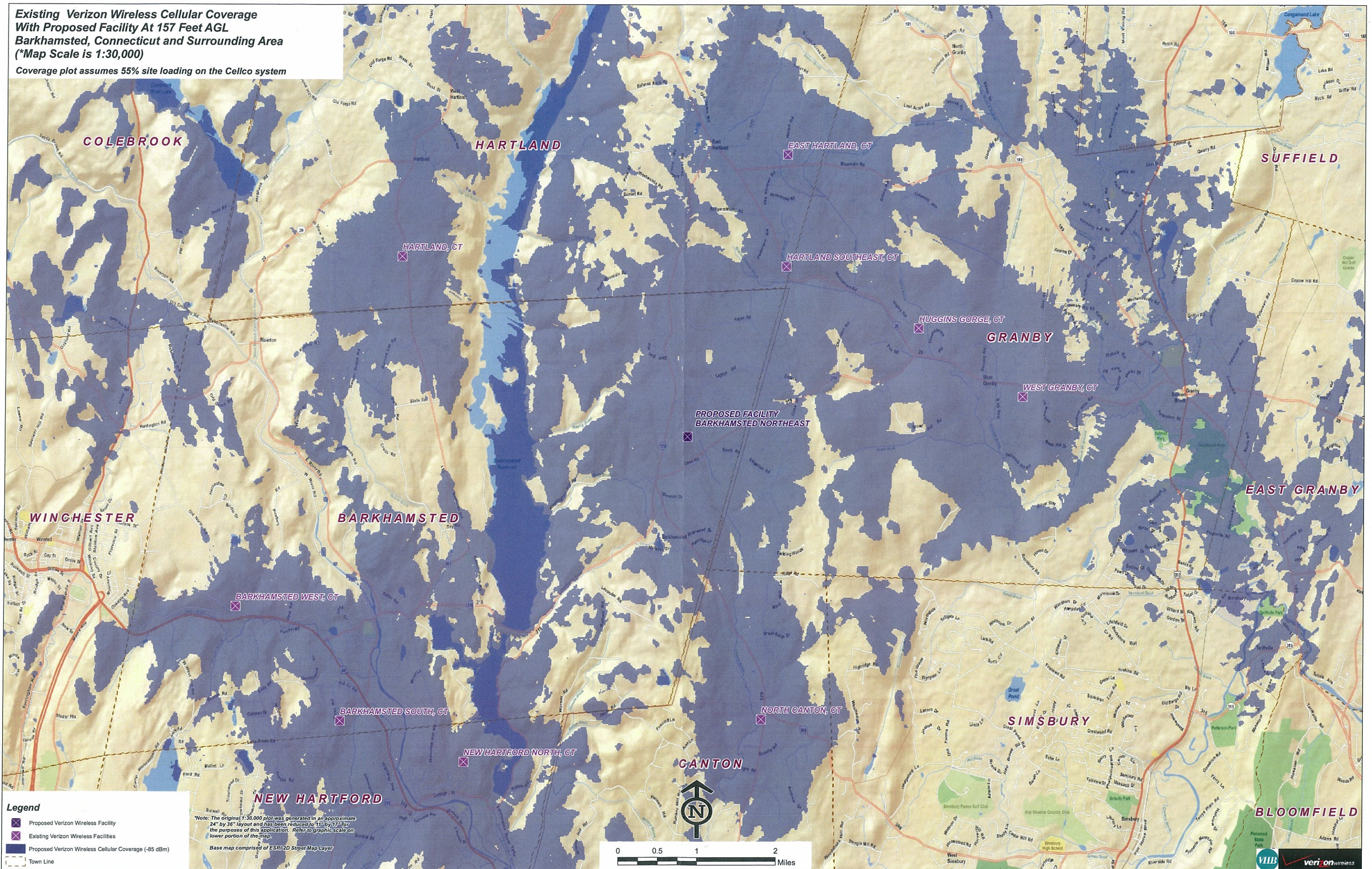
**Legend**  
 Proposed Verizon Wireless Facility  
 Verizon Wireless LTE (700 MHz) Coverage (-85 dBm)  
 Town Line

\*Note: The original 1:30,000 plot was generated in an approximate 24" by 36" layout and has been reduced to 11" by 17" for the purposes of this application. Refer to graphic scale on lower portion of the map.  
 Base map comprised of ESRI 2D Street Map Layer



**Existing Verizon Wireless Cellular Coverage  
With Proposed Facility At 157 Feet AGL  
Barkhamsted, Connecticut and Surrounding Area  
(\*Map Scale is 1:30,000)**

Coverage plot assumes 55% site loading on the Cellco system



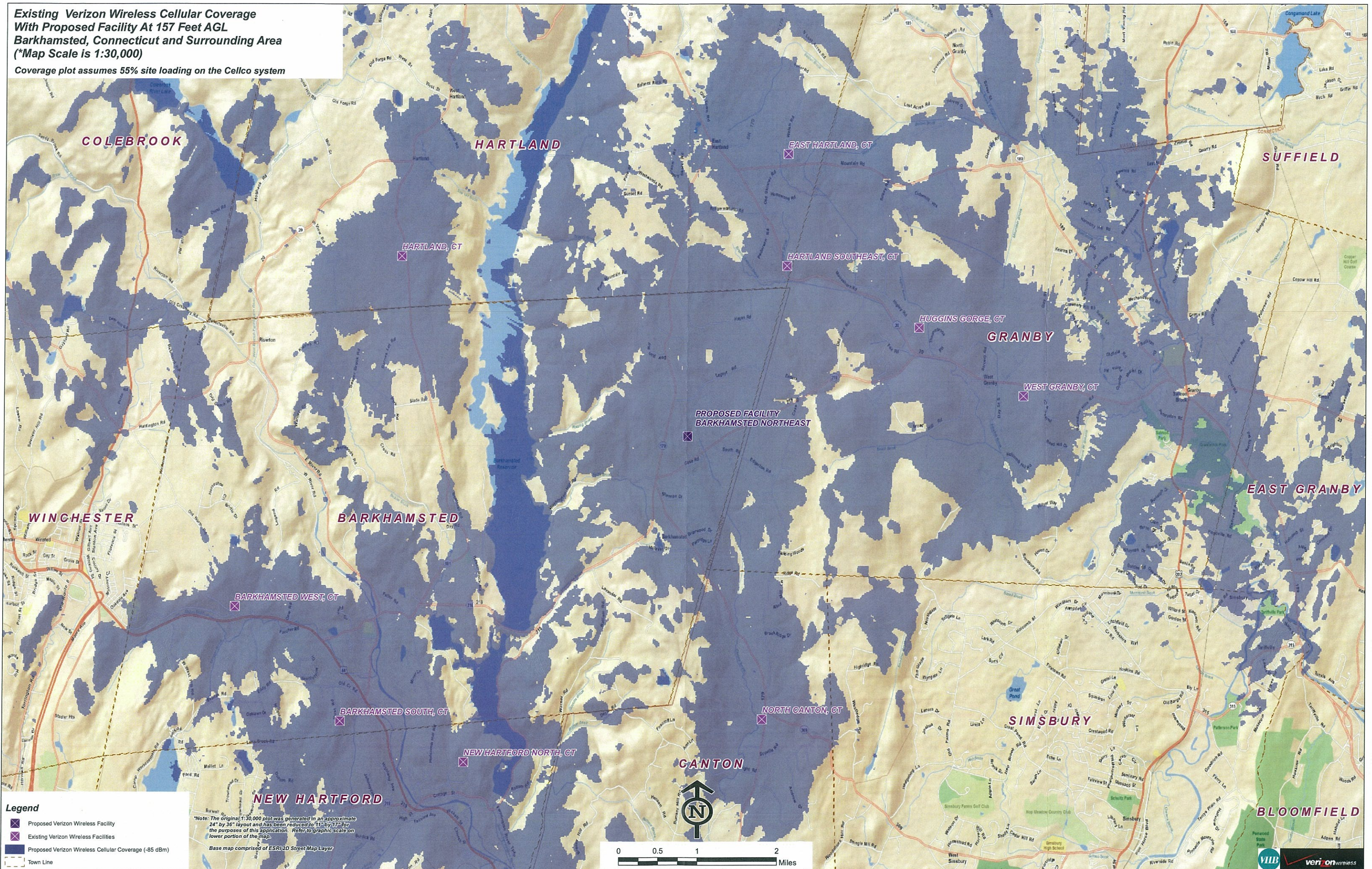
- Legend**
- X Proposed Verizon Wireless Facility
  - X Existing Verizon Wireless Facilities
  - Proposed Verizon Wireless Cellular Coverage (-85 dBm)
  - Town Line

\*Note: The original 1:30,000 plot was generated in an approximate 24" by 36" layout and has been reduced to 11" by 17" for the purposes of this application. Refer to graphic scale on lower portion of the map.

Base map comprised of ESRI 2D Street Map Layer



**Existing Verizon Wireless Cellular Coverage  
With Proposed Facility At 157 Feet AGL  
Barkhamsted, Connecticut and Surrounding Area  
(\*Map Scale is 1:30,000)**  
Coverage plot assumes 55% site loading on the Cellco system



**Legend**

- Proposed Verizon Wireless Facility
- Existing Verizon Wireless Facilities
- Proposed Verizon Wireless Cellular Coverage (-85 dBm)
- Town Line

\*Note: The original 1:30,000 plot was generated in an approximate 24" by 36" layout and has been reduced to 11" by 17" for the purposes of this application. Refer to graphic scale on lower portion of the map.

Base map comprised of ESRI 2D Street Map Layer

