

280 Trumbull Street
Hartford, CT 06103-3597
Main (860) 275-8200
Fax (860) 275-8299
jmiranda@rc.com
Direct (860) 275-8227

Also admitted in District of
Columbia and Massachusetts

Via Electronic Mail & First Class Mail

March 27, 2009

S. Derek Phelps
Executive Director
Connecticut Siting Council
Ten Franklin Square
New Britain, CT 06051

Re: **Docket No. 374 - Application of Cellco Partnership d/b/a Verizon Wireless for a Certificate of Environmental Compatibility and Public Need for the Construction, Maintenance and Operation of a Wireless Telecommunications Facility at 199 Town Farm Road, Farmington, Connecticut**

Dear Mr. Phelps:

Enclosed are an original and twenty (20) copies of Supplemental Information submitted by Cellco Partnership d/b/a Verizon Wireless' ("Cellco") in connection with the above-referenced application. Cellco intends to offer the Supplemental Information as an exhibit in this matter.

Please feel free to contact me if you have any questions or require additional information. Thank you.

Sincerely,



Joey Lee Miranda

Enclosures

Copy to: Sandy Carter



Law Offices

BOSTON

HARTFORD

NEW LONDON

STAMFORD

WHITE PLAINS

NEW YORK CITY

SARASOTA

www.rc.com

HART1-1537188-1

STATE OF CONNECTICUT

CONNECTICUT SITING COUNCIL

IN RE: :
: :
APPLICATION OF CELLCO PARTNERSHIP : DOCKET NO. 374
D/B/A VERIZON WIRELESS FOR A :
CERTIFICATE OF ENVIRONMENTAL :
COMPATIBILITY AND PUBLIC NEED FOR :
THE CONSTRUCTION, MAINTENANCE :
AND OPERATION OF A WIRELESS :
TELECOMMUNICATIONS FACILITY AT :
199 TOWN FARM ROAD, FARMINGTON, :
CONNECTICUT : MARCH 27, 2009

SUPPLEMENTAL INFORMATION

On January 23, 2009, Cellco Partnership d/b/a Verizon Wireless (“Cellco”) filed the above-captioned application (“Application”) with the Connecticut Siting Council (“Council”). In the Application, Cellco noted that it had made several attempts to contact the Avon Old Farms School (“School”) as part of its site search process. *See* Application at Tab 9, p. 3.

After filing the Application, a representative of the Avon Old Farms School (“School”) contacted Cellco representatives inquiring about the feasibility of placing a facility at the School. In response, Cellco representatives visited the School on March 18, 2009 to determine if there was a suitable site on the School property that would allow Cellco to meet its Farmington N2 coverage objectives.

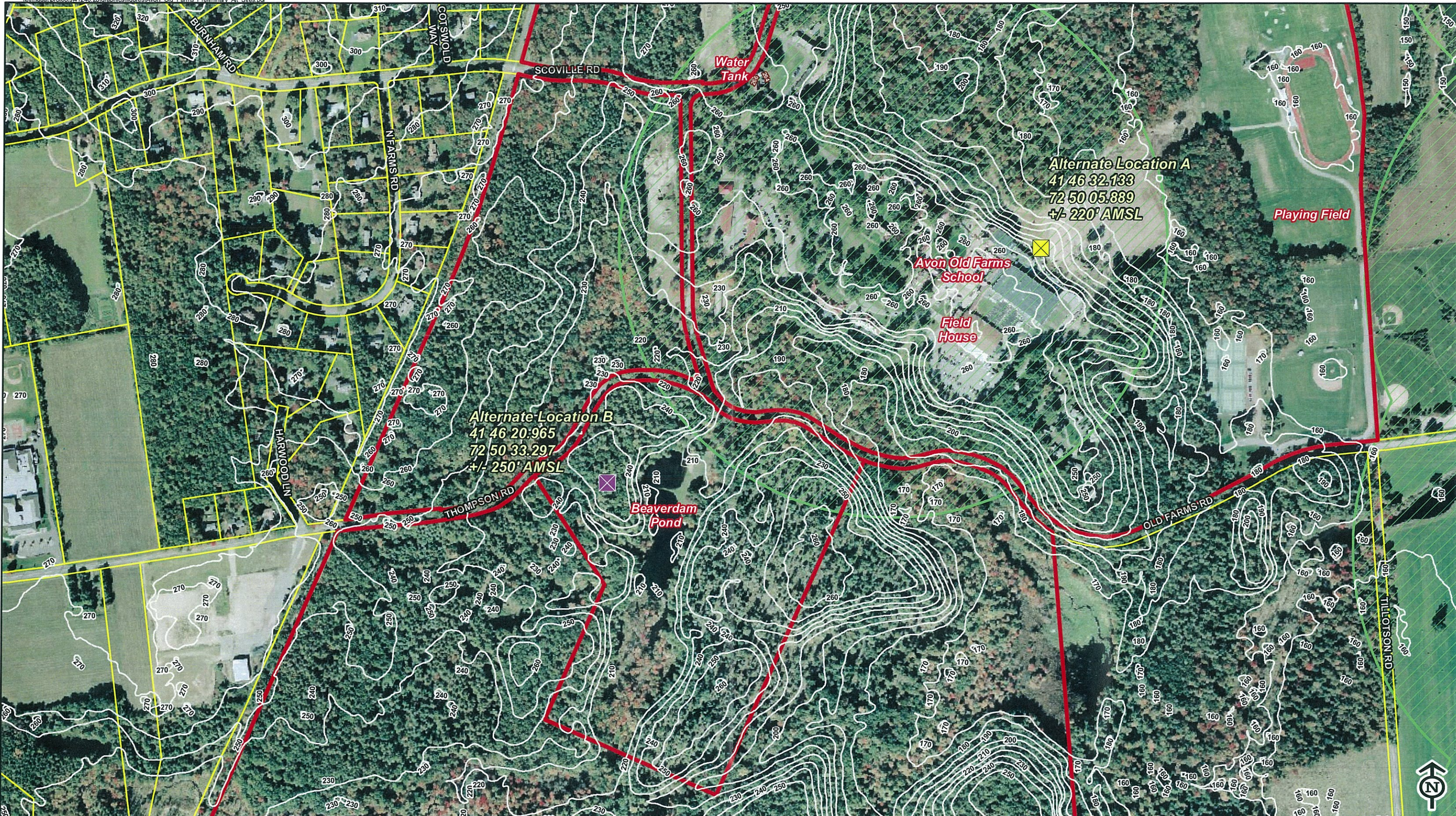
Based on its location to the north of the Simmons Family Farm site, Cellco determined that it would need a location on the School property with a significant ground elevation. During the site visit, the Assistant Director of Facilities for the School took Cellco representatives to the two locations on the property with the highest ground elevation – the field house (Alternative

Location A) and the cabin site near Beaver Dam Pond (Alternative Location B). *See* attached location map.

Alternative Location A has a ground elevation of approximately 220 feet above mean sea level (“AMSL”), and Alternative Location B has a ground elevation of approximately 250 feet AMSL. Despite the ground elevation at these locations, Cellco is unable to satisfy its Farmington N2 coverage objectives with a facility at the School. In fact, even with a facility height of greater than 200 feet, there are still significant coverage gaps along Route 10, which is Cellco’s primary coverage objective for the Farmington N2 Facility. Accordingly, the School does not provide a suitable alternative location for the proposed Farmington N2 Facility.

Respectfully submitted,
CELLCO PARTNERSHIP d/b/a VERIZON
WIRELESS

By: 
Joey Lee Miranda, Esq.
Robinson & Cole LLP
280 Trumbull Street
Hartford, Connecticut 06103-3597
Phone: (860) 275-8200
Fax: (860) 275-8299
E-mail: jmiranda@rc.com



Alternate Location A
 41 46 32.133
 72 50 05.889
 +/- 220' AMSL

Alternate Location B
 41 46 20.965
 72 50 33.297
 +/- 250' AMSL

Vanasse Hangen Brustlin, Inc.

Potential Alternate Site Locations
Avon Old Farms School
Avon, Connecticut

- Legend**
- Alternate Tower Location A
 - Alternate Tower Location B
 - Approximate School Boundary
 - 10-Foot Contours
 - Parcels
 - NDDB Areas (buffered; last updated 12/08)



Base Map Source: 2006 color aerial photograph with 1-foot resolution.

